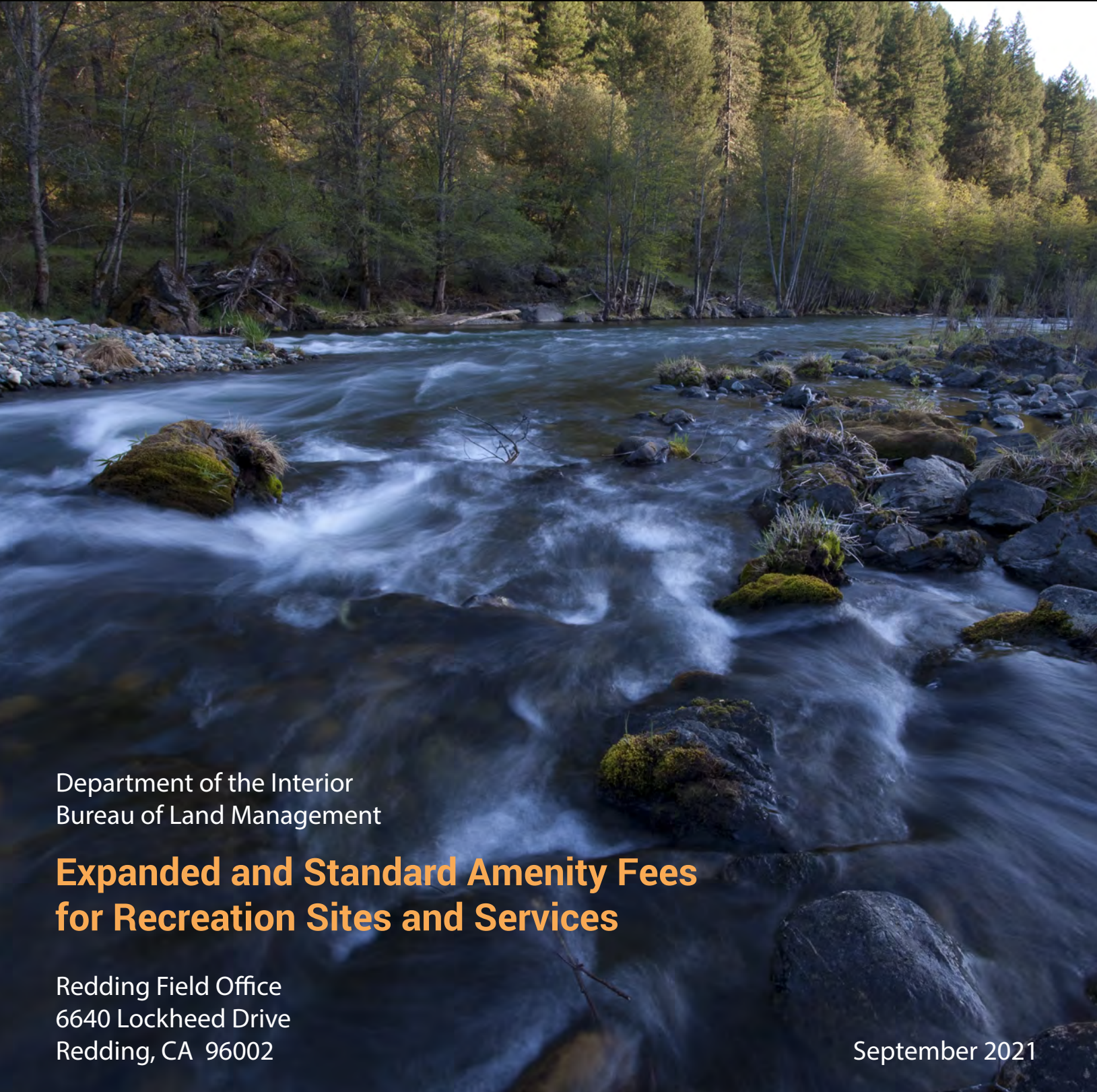




U.S. Department of the Interior
Bureau of Land Management

Business Plan

Redding Field Office, California



Department of the Interior
Bureau of Land Management

Expanded and Standard Amenity Fees for Recreation Sites and Services

Redding Field Office
6640 Lockheed Drive
Redding, CA 96002

September 2021

Table of Contents

BLM Signatory Page	4
1. Executive Summary	5
2. Introduction	
2.1. Fee and Business Plan Requirement.....	9
2.2. Regulatory Background.....	10
3. Background	
3.1. Area Description.....	11
3.2. Visitor Demographics.....	12
3.3. Recreational Visitation.....	13
3.4. Season of Use.....	15
3.5. Operating Costs.....	15
3.5.1. Annual Operating Costs.....	15
3.5.2. Recreation Use & Fee Revenues.....	17
3.5.3. Identification of Cost Recovery Need.....	17
4. Fee Proposal	
4.1. Summary.....	18
4.2. Existing and Proposed Fee Types.....	19
4.2.1. Expanded Amenity – Fee Updates.....	20
4.2.2. Expanded Amenity – New Fees.....	31
4.2.3. Standard Amenity – New Fees.....	35
4.3. Fee Calculation.....	37
4.4. Financial Projections.....	41
4.5. Use of Fees.....	42
4.6. Impact of Fee Changes.....	43
5. Outreach	
5.1. Public and Stakeholder Participation.....	44
6. Appendices	
6.1. Description of Expanded Amenities per Recreation Site.....	46
6.2. 7-Year Visitation and Revenue table for Breakdown by Year..	47

Tables:

Table 1: Proposed Expanded Amenity Fees.....	6
Table 2: Proposed Standard Amenity Fees.....	7
Table 3: Annual Operating Costs.....	16
Table 4: 7 Year Average for Nightly Campground Visits.....	17
Table 5: Determination of Recreation Site Eligibility for Fee Collection.....	18
Table 6: Fair Market Analysis- Expanded Amenities for Trinity River Vicinity..	38
Table 7: Fair Market Analysis- Standard Amenities for Trinity River Vicinity...	38
Table 8: Fair Market Analysis- Expanded Amenities for Shasta Campground....	39
Table 9: Fair Market Analysis- Expanded Amenities for Group Campgrounds...	40
Table 10: Financial Projection.....	42
Table 11: Proposed Updated Expanded Amenity Fees.....	46
Table 12: Proposed New Expanded Amenity Fees.....	46
Table 13: Proposed New Standard Amenity Fees.....	46
Table 14: 7-year Visitation and Revenue table for Breakdown by Year.....	47

Maps:

Map 1: Redding Field Office, with the locations of campgrounds.....	8
Map 2: Trinity River Recreation Area.....	11
Map 3: Chappie-Shasta Off-Highway Vehicle Area.....	26
Map 4: Reading Island Group Campground.....	29

BLM Signatory Page

Business Plan Developed By:

Redding Field Office – Recreation

6640 Lockheed Drive

Redding, California 96002

Signatures for Approving Business Plan

Recommended By:

Field Manager

Date

Reviewed By:

District Manager

Date

Approved By:

State Director

Date

1. Executive Summary

This business plan was prepared pursuant to the “Federal Lands Recreation Enhancement Act (FLREA), 2004” (P.L. 108-447) and BLM recreation fee program policy. It establishes future management goals and priorities for the Redding Field Office’s recreation fee program. This business plan outlines proposed fee changes for campgrounds, presents historical visitation and revenue, provides a fair market value analysis, and shows the need to increase fee revenue to pay for operating costs. Consistent with FLREA, the intent of this business plan is not to maximize fee revenue but to help protect natural resources, provide for public health and safety, and facilitate access to public lands and related waters. Fees are a way of ensuring that those who actively use recreation opportunities make a greater, but reasonable, contribution toward protecting and enhancing those opportunities than those who do not utilize recreational opportunities.

The Redding Field Office Recreation Program includes active management of expanded and standard amenity recreation sites including Steel Bridge, Steiner Flat, Junction City, Douglas City and Shasta campgrounds and the Ohl Olsen and Reading Island group campgrounds. The campgrounds meet the expanded amenity parameters as defined in FLREA because the recreation areas provide five or more amenities, including: tent or trailer spaces, refuse containers, toilet facilities, reasonable visitor protection, and simple devices for containing a campfire. The amenity of drinking water is provided at Shasta, Douglas City and Junction City campgrounds. Standard amenity fees for day-use within Steel Bridge and Douglas City campground are proposed as it has been deemed appropriate for these users to share in some of the cost of the amenities used. Day-users at these sites benefit from increased parking security (particularly when shuttling for boating or hiking), toilets, tables, interpretive kiosks, and trash services, all within a well-defined recreation site. The proposed fee changes and additions are as follows (Table 1):

Table 1: Proposed for Expanded Amenity Fees

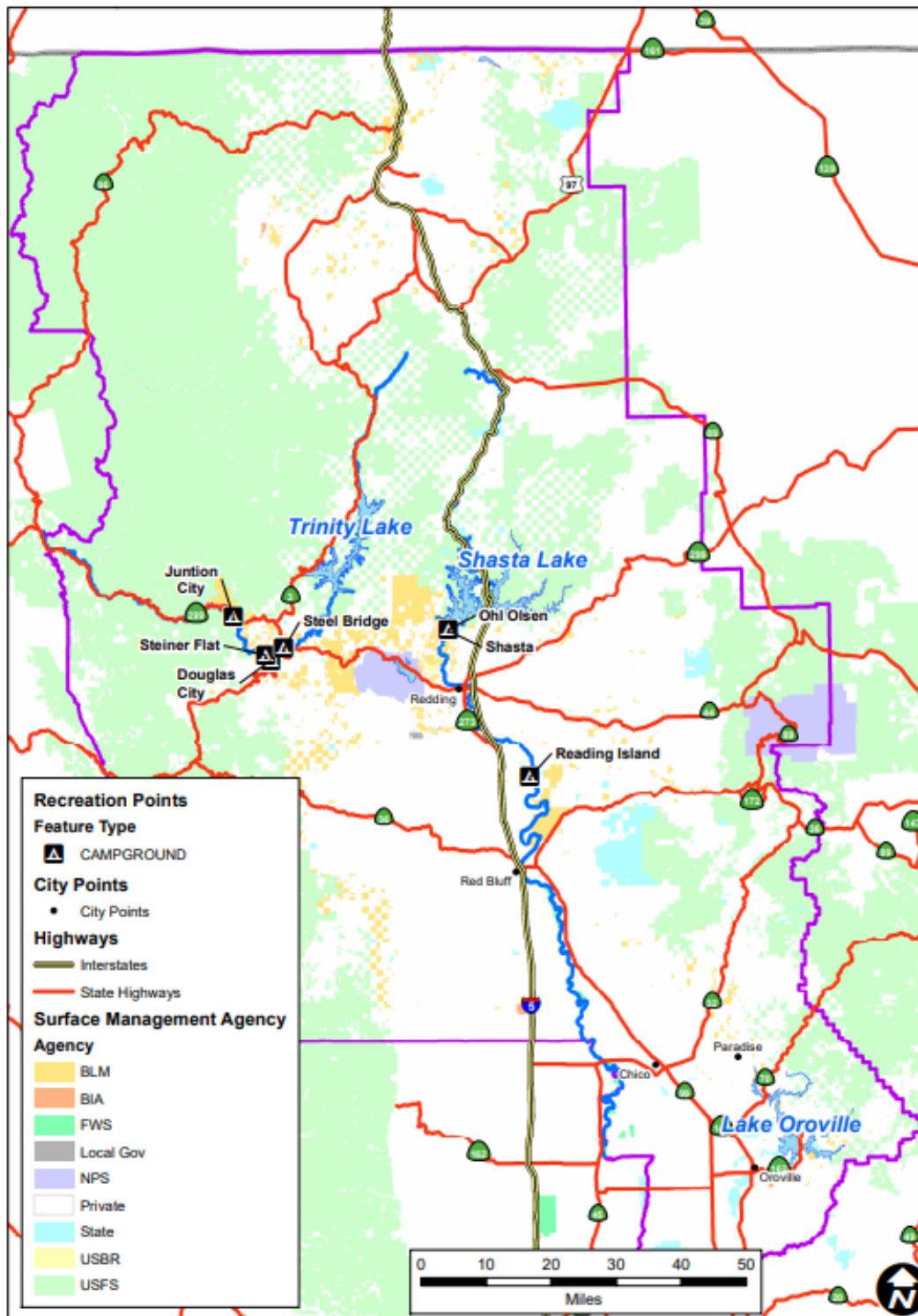
Campground	Current Fee Structure	Proposed Fee Structure
Douglas City Campground	\$10 per night to include parking for 2 vehicles. \$5 per additional vehicle.	\$20 per night to include parking for 2 vehicles. \$6 per additional vehicle as space allows to a maximum of 4 vehicles per site. The parking spurs at this site offer more parking than what is common.
Junction City Campground	\$10 per night to include parking for 2 vehicles. \$5 per additional vehicle.	\$15 per night to include parking for 2 vehicles. \$6 per additional vehicle as space allows to a maximum of 4 vehicles per site.
Steel Bridge Campground	\$5 per night to include parking for 2 vehicles. \$5 per additional vehicle.	\$15 per night to include parking for 2 vehicles. \$6 per additional vehicle as space allows to a maximum of 4 vehicles per site.
Steiner Flat Primitive Campground	No Fee	\$15 per night to include parking for 2 vehicles. \$6 per additional vehicle as space allows to a maximum of 4 vehicles per site.
Shasta Campground	\$10 per night to include parking for 2 vehicles. \$5 per additional vehicle.	\$20 per night to include parking for 2 vehicles. \$6 per additional vehicle as space allows to a maximum of 4 vehicles per site.
Ohl Olson Group Campground	No Fee	\$60 (maximum 30 people) for the lower site; \$80 (max 50 people) for the upper site
Reading Island	\$90 per night (max 20 people)	\$90 per night for 20 people. Additional cost per person of \$6, up to 30 people

Table 2: Proposed for Standard Amenity Fees

Campground	Current Fee Structure	Proposed Fee Structure
Douglas City Day-Use	Not currently offered	\$6 per day, to include overnight parking if shuttling for river or hiking trip
Douglas City Shower Fee	Not currently offered	\$2.00 per shower
Steel Bridge Day-Use	Not currently offered	\$6 per day, to include overnight parking if shuttling for river or hiking trip

All proposed fees are based on a fair market analysis of fees charged by other public agencies and private providers for similar services within the respective geographic area of each recreation site. Fee increases are necessary to better meet the expenses of the recreation program, including maintenance and operations to prevent resource damage and provide better visitor services.

Redding Field Office Campgrounds



Map 1: Redding Field Office area is depicted along with the locations of campgrounds with proposed fee changes in this business plan.

2. Introduction

2.1. Fee and Business Plan Requirement

This business plan outlines direction for the operation and maintenance of the Bureau of Land Management, Redding Field Office campgrounds and the associated Recreation Use Permit (RUP) program. The plan conforms to state and national direction for recreation management and is built on partnerships with local communities. This plan was prepared pursuant to Federal Lands Recreation Enhancement Act (REA) of December 2004 (P.L. 108-447, as amended), Bureau of Land Management (BLM) recreation fee program policy and manual (Manual 2930-Recreation Permits and Fees) and handbook (H-2930-1 Recreation Permit and Fee Administration Handbook).

REA provides the BLM current authority to establish, modify, charge, and collect recreation fees at Federal recreational lands and waters. REA authorizes the BLM to retain locally collected recreation fees and outlines how revenues may be used for such things as facility repair, maintenance, facility enhancement directly related to public use and operating, or capital costs associated with the Recreation and Visitor Services program. Under REA, a Standard Amenity fee and an Expanded Amenity fee may be charged for the use of certain facilities or services, which include developed day-use sites and campgrounds. The developed recreational sites must meet the criteria that are defined below. These fees are usually implemented through the issuance of a recreation use permit (RUP), or through a specific annual pass. BLM policy requires that revenue from RUPs be deposited into a separate account (pg. 2-3 (8) of H-2930-1). Doing so allows the BLM to more readily track and report collections and ensures that RUP revenue is spent at or near the site of collection.

Definitions of Standard and Expanded Amenities taken the REA and BLM recreation fee program policy and manuals for the area covered under this business plan:

Standard Amenity Recreation Fees cover outdoor recreation areas that provide significant opportunities for outdoor recreation; have substantial Federal investments; provide areas where fees can be effectively collected and have all the following amenities: (1) designated developed parking, (2) a permanent toilet facility, (3) a permanent trash receptacle, (4) interpretive sign, exhibit, or kiosk, (5) picnic tables, (6) and security services (Sec. 803. (f)(4)(D) of REA).

Expanded Amenity Recreation Fees cover specialised outdoor recreation sites and services including but not limited to developed campgrounds with at least a majority of the following amenities: (1) tent or trailer spaces, (2) picnic tables, (3) drinking water, (4) access roads, (5) fee collection by an employee or agent of the BLM, (6) reasonable visitor protection, (7) refuse containers, (8) toilet facilities, (9) simple devices for containing a campfire (Sec. 803.(g)(2)(A) of REA).

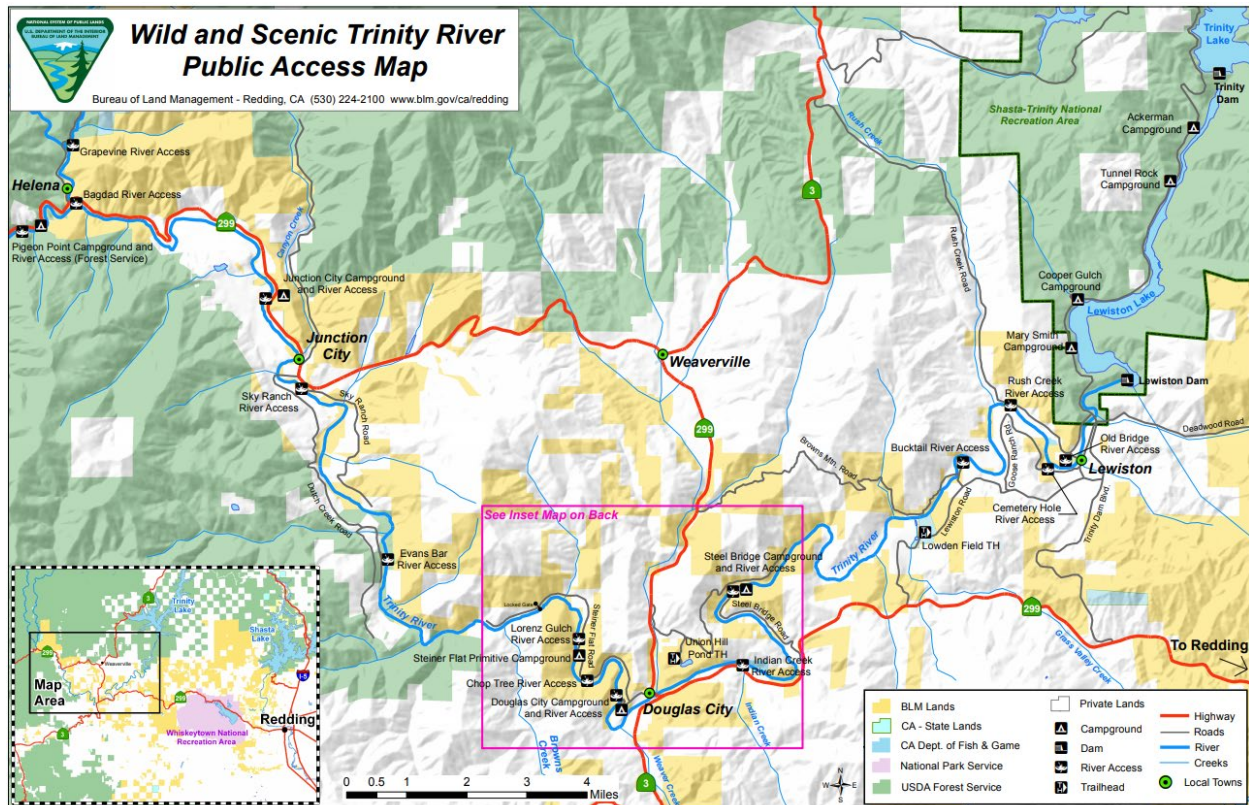
2.2. Regulatory Background

The BLM Handbook H-2930-1, Recreation Permits and Fee Administration (Rel. 2- 300, dated Nov. 17, 2014), requires that each recreation fee program have an approved business plan which thoroughly discusses fees and explains how fees are consistent with the criteria set forth in REA. Business plans are to assist management in determining the appropriateness and level of fees, the cost of administering a fee program and the expected benefits for the public. The primary purpose of the plan is to serve as public notification of the objectives for use of recreation fee revenues and to provide the public an opportunity to comment on these objectives. The finalized business plan guides the expenditure of collected REA funds and ensures public accountability. The business plan will specifically cover a description of the fee site, proposed changes in fees to these sites, associated operating costs, planned expenditures of fee revenue, a financial analysis utilizing a regional comparative market study of fees charged for other similar recreation facilities, and the impacts of proposed fee changes. The data used to analyze and prepare this business plan was obtained through internal BLM tracking and accounting mechanisms such as the Federal Business Management System (FBMS), Recreation Management Information System (RMIS), Collections and Billing Systems (CBS), and other locally generated recreation and visitor use tracking spreadsheets.

Prohibitions on Charging REA Fees Section 803(d) of the REA provides that standard or expanded amenity recreation fees shall not be charged for (shortened list): parking only, undesignated parking, or picnicking along roads or along trails, general access, low investment sites or areas, persons moving through without using the facilities or services, for camping at undeveloped sites that do not provide a minimum number of facilities or services as described above (expanded amenity recreation fee), use of overlooks or scenic pullouts, any person engaged in the conduct of official Federal, State, Tribal or local government business, special attention or extra services necessary to meet the needs of the disabled, any person under 16 years of age, outings conducted for non-commercial educational purposes by schools or bona fide academic institutions, and others.

The Federal Land Policy and Management Act (Public Law 94-579) has the BLM's general land use management authority over public lands and establishes outdoor recreation as a key use of those lands. Section 302(b) authorizes the Secretary of the Interior to regulate public lands uses through permits or other instruments.

This business plan has been prepared pursuant to all applicable BLM recreation fee program policies and guidance outlined in the BLM Recreation Permit and Fee Administration Handbook (H-2930-1).



Map 2. Trinity River Recreation Area

3. Background

3.1. Area Description

Wild and Scenic Trinity River

The Wild and Scenic Trinity River from Lewiston to Pigeon Point is a class I and II river segment that flows out of the Trinity and Lewiston Lakes in Trinity County. Steel Bridge, Douglas City and Steiner Flat Campgrounds are adjacent to the Trinity River and Junction City campground is a short walk across Highway 299 to the river. All four campgrounds offer the opportunity for walking along the river or fishing from its cobblestone banks. Fly-fishing at wade-in points and by drift boat is popular, as well as pleasure boating and paddling.

Chappie-Shasta OHV Area

Just 10 miles northwest of Redding in Shasta County, the Chappie-Shasta Off-Highway Vehicle (OHV) area offers over 200 miles of roads and trails on approximately 52,000 acres for off-road enthusiasts. Elevation within this area ranges from 600 to 5000 feet with a wide variety of topography, soil, and vegetation types. The southeastern portions offer rocky and challenging terrain, while the more remote northwestern portions offer scenic views of Mt. Shasta, Lake Shasta, and the Trinity Alps. The OHV Area contains many private land parcels, and several

roads and trails cross these parcels. The Chappie-Shasta OHV Area contains the Shasta campground and the Ohl Olsen group campground. There is a free day use parking area and OHV staging area adjacent to the Shasta campground. The paved, non-motorized Sacramento River Rail Trail can be easily accessed from the parking areas or campground. No developed boat ramps are available, but there is river access from the Shasta campground or day use area via a short natural surface trail. Information kiosks are available at both the campground and the OHV staging area.

Reading Island Group Campground, adjacent to the Sacramento River Bend Outstanding Natural Area

The Sacramento River Bend Outstanding Natural Area (ONA) is a valuable cultural and natural resource that presents many recreational and educational opportunities in Shasta and Tehama counties. From the lush riparian areas surrounding the Sacramento River and its tributaries to the expanse of the rolling hills of blue oak savannah, the Sacramento River Bend ONA offers diverse habitat for bald eagles, osprey, migratory and songbirds, deer, and salmon. The area also offers numerous opportunities for recreation such as hunting, camping, hiking, biking, boating, picnicking, and wildlife viewing. Reading Island Campground is located in the most northwest reach of the Sacramento Bend area. Campers at Reading Island group campground may access the Sacramento Bend trail system within 15-minute drive or take a scenic float through the Sacramento Bend via the boat access area at the group campground.

3.2. Visitor Demographics

The Redding Field Office does not collect or maintain comprehensive visitor demographic information for recreational users across the public lands that it administers. The most reliable information on local visitor demographics comes from census data for Trinity, Shasta and Tehama counties. Visitation data for 2018 is provided by our neighbors at Shasta-Trinity National Forest (STFS) and is considered applicable to Trinity County.

Trinity County. According to the United States Census Bureau the population of Trinity County in 2019 was 12,285 with a median household income (in 2019 dollars) of \$40,846. The BLM Redding campgrounds in Trinity County are Steel Bridge, Steiner Flat, Junction City and Douglas City campgrounds. Observed trends in visitation are described below and recreation staff identify most visitation to BLM campgrounds as local to Trinity County and northern California.

BLM Trinity County recreation areas frequently border Shasta-Trinity National Forest along the Trinity River. For this reason, STFS data collected through on-site survey is considered in this area. Of note, 38.3% of people reported travelling 0-25 miles to recreate on STFS, with approximately 19% travelling 26-100 miles. 13.5% of people travel 101-200 miles, and 21.4 percent travel 201-500 miles. From the data it is evident that the BLM Redding likely serves a higher volume of local visitation, which supports what BLM recreation staff see in the field.

Otherwise, STFS visitation data reveals that 10.6% of people make under \$25,000, and 13.5% make between \$25,000 to \$49,000. About 23.3% of STFS visiting traffic report income of \$75,000 to \$99,999 and 29.4% report an income of \$100,000 to \$149,000. Again, a wide disparity of income levels is noted within the Trinity recreation area for the BLM Redding.

Shasta County. For Shasta County, the Census Bureau identifies a population of 180,080 (2019) with a median household income of \$54,667 (2019). BLM recreation staff generally note that visitation at Shasta campground and Ohl Olsen group campground primarily local, with permitted events drawing people from the bay area and beyond due to the high demand for the Chappie-Shasta OHV area.

Tehama County. Reading Island group campground is in Tehama County. Tehama County had a population of 65,084 (2019), and a median income of \$44,514 (2019). Reading Island visitation is observed to be primarily comprised of visitors from Tehama and Shasta County, due to proximity to Red Bluff, and the city of Redding (about 30 miles).

3.3. Recreational Visitation

Douglas City Campground. Visitation at Douglas City campground primarily includes fishermen, boaters, beach goers, and people seeking the leisure and relaxation offered by a riverfront campground. Campers use Douglas City campground the entire season that the area is open, with concentrated use around the different holidays: Memorial Day, Fourth of July, and Labor Day weekends. Although most of the campers are from the Northern California area, we see visitation from all over the country. Most campers stay for one to three nights; however, there are several guests that stay for one to two weeks. Visitation is largely from the local and often underserved community.

Additionally, many local community members have historically used Douglas City Campground for day-use, as there is an overlook with picnic tables, grills, a separate parking area, and an excellent unpaved boat access point nested into the campground. BLM staff frequently hear from day-users that they have been visiting the campground for decades and enjoy having recreational opportunities so close to home. One goal of the proposed day-use fee is to provide continued access to the area and amenities, while also addressing capacity within the campground.

Lastly, in May of 2012 a two-stall shower house with a two-stall flush toilet was installed in the campground. During camping season visitors of all types, including other campground guests in the area, day-use visitors, people dispersed camping nearby, recreational boaters, hunters, fishermen and vacationers passing through the area, have all been known to stop by in hopes of a shower.

Steiner Flat Campground. This campground is located approximately one mile down river of Douglas City Campground. The visitation patterns are similar; however, Steiner Flat Campground is currently maintained with minimal infrastructure and no fee. In this management

situation, Steiner Flat Campground incurs environmental impacts due to the nature of prolonged use (14 days and beyond is common and frequent) without day-to-day infrastructure to meet campers' needs. Laundry soap, dish soap, food waste, human waste and refuse are frequently disposed of within the river corridor (buried or left out) or in the river. All campers are exposed to health and safety hazards due to toxic waste such as raw human waste, insufficient food storage options and improperly disposed of materials. This is also an impact to the local wildlife. Implementation of a minimal fee will assist BLM to develop and maintain Steiner Flat Campground for the health and safety and enjoyment of all visitors.

Junction City Campground. Typical visitors at Junction City Campground tend to be overnight users who are driving through between Redding and the Pacific Coast. While most users stay only one night, there are occasional multi-night users. The campground's peak use occurs during hunting and fishing season, roughly August-October. Just across from the campground and Highway 299 there is a large gravel bar with vehicle access that is popular with fly fishermen and some recreational boaters. The gravel bar provides recreational opportunities for campers at Junction City Campground.

Steel Bridge Campground. The Steel Bridge campground tends to attract users who prefer a longer stay and want a quieter atmosphere. The campground is the most remote of the Trinity River campgrounds and is located approximately two miles off Highway 299. A narrow two-lane, paved road leads into Steel Bridge. The road narrows further to a paved, one-lane road when it passes through a small river front community for roughly the last mile. Steel Bridge Campground is a favorite spot for locals seeking a nearby retreat and for fishermen who want to spend several days fishing the Trinity River. At the end of the campground, where it dead ends at the forest, there is a half-mile fisherman's trail, and a popular small primitive ramp that users enjoy as a beach area. Locals have visited this area for decades for day-use purposes such as boating, fishing, and beach front relaxation.

Chappie-Shasta Campground. Most users at Chappie-Shasta Campground are OHV users recreating in the Chappie-Shasta OHV area. Visitation is typically high spring and late fall when the temperatures are more mild. Most of the OHV users are local users from the surrounding area; however, it is common to see recreationists from southern Oregon, Sacramento, San Francisco, and the Reno/Tahoe areas camping and riding OHVs throughout the prime riding season.

Ohl Olsen Group Campground. Most users at Ohl Olsen are regional and are similar to those visiting Chappie-Shasta due to proximity to the Chappie-Shasta OHV area. The group sites are favored by folks visiting the area for family celebrations and by people gathering for holidays who enjoy OHV recreation. Increased visitation from outside of the immediate area has also been an observed trend by BLM staff in recent years.

Reading Island Group Campground. Most users of this group campground are regional, traveling within a few hours of Redding. The campground is popular as an overnight stop for boaters on extended trips on the Sacramento River. The scenic and remote destination on the river makes it a highly desirable camping option by raft or by vehicle access.

3.4. Season of Use

Most visitation at the Trinity campgrounds occurs between late May and early October. Visitation is largely dependent on seasonal factors such as weather and campground host availability for exact opening and closing dates. Shasta, Ohl Olsen and Reading Island are open year-round, and have lower visitation in the peak of summer (July- September) when temperatures frequently exceed 100 degrees. Campground occupancy rates differ per site, season, and day of week, but are observed to generally range between 40 and 65 percent. During seasonal mild weather in Spring and Fall, campgrounds fill on the weekends. All campgrounds fill on the popular three-day weekends, such as Memorial Day and 4th of July.

3.5. Operating Costs

The Redding Field Office expends substantial resources in managing visitor use at developed recreation sites. All sites require and benefit from staff presence and visitor contacts, signage, interpretive opportunities, cleaning, trash pick-up, and maintenance. Direct costs for these services include BLM employees and campground hosts. Costs also include services such as restroom pumping, garbage collection, hazard tree mitigation, potable water testing, vehicles, law enforcement, signage, maintenance supplies, brochures, and other interpretive materials.

3.5.1 Annual Operating Costs of Recreation Sites

The greatest operating expense is related to staff labor for visitor services and related maintenance actions. BLM recreation employees, campground hosts, and contractors ensure the cleanliness and safety of the facilities. These staff are responsible for responding to visitor inquiries, resolving disputes, fee collection, cleaning campsites, infrastructure maintenance, construction of campground amenities, and landscaping. The campgrounds are also patrolled by BLM Law Enforcement Rangers to assist with fee compliance, protect resources and facilities, and help maintain the safety of campers. Toilet cleaning, pumping and effluent disposal services are performed by staff and/or specialized contractors certified to address hazardous wastes. The cost of cleaning and maintaining the campgrounds also includes buying toilet paper, garbage bags and cleaning supplies. Maintenance and testing of the drinking water systems is provided by BLM staff. The program also supports the cost for government vehicles and equipment used to support patrols, maintenance work, resource and visitor use monitoring. Large projects involving campground design, construction, and road maintenance are supported by engineering staff. Other annual operating costs include monitoring of visitor use, contract

procurement and administration, public affairs, GIS mapping, and support functions such as providing information services to the public from the front desk of the Field Office.

Table 3: Annual Operating Costs

Expanded Amenity Fee Site Operating Costs per Worker Based on Allocated Time	Approximate Annual Operating Costs
Maintenance Worker	\$23,000.00
Seasonal Maintenance	\$10,500.00
Park Ranger	\$18,500.00
Outdoor Rec Planner (Shasta)	\$24,000.00
Outdoor Rec Planner (Trinity and Tehama)	\$15,000.00
Engineer and Heavy Equipment	\$20,000.00
Administrative Rec Staff	\$6,000.00
Assistant Field Manager	\$4,000.00
Law Enforcement	\$14,000.00
Fire Management	\$10,000.00
Volunteers and Camp Hosts	\$24,000.00
Utilities & Services	
Electricity	\$4,000.00
Garbage Service	\$19,150.00
Water	\$5,500
Toilet Pumping	\$6,000.00
Materials and Supplies	
Toilet Paper, Cleaning and Maintenance Supplies	\$10,000.00
Incidental Maintenance	\$7,000.00
Vehicles	\$35,000.00
Total	\$255,650.00

An average of about \$23,000 in fees is collected annually from campgrounds. Of note, the proposed new Standard Amenity fees are for day-use recreation areas nested within the Expanded Amenity fee areas of Douglas City Campground and Steel Bridge Campground. Therefore, the cost breakdown for expanded amenity fee areas reflects costs associated with historical day-use within these areas. The fee proposed for day-users for the use of showers, flush and vault toilets, more secure parking, tables, and trash services, and the defined and limited recreational environment is considered equitable and appropriate.

Maintenance costs at recreation sites vary year to year, and the “incidental maintenance” noted in the table applies to needs such as basic plumbing repair, electrical services, basic landscaping and weed control, painting, broken bear box locks, and sign installation.

3.5.2 Recreation Use & Fee Revenues

The table below shows the visitor days as self-reported on recreation use permits and annual revenue for the past 7 years (FY 2014 through FY 2020). It does not include group campgrounds. Fees collected show fluctuation in visitation, with an annual average revenue collected from campgrounds of \$23,145.71. Fee compliance is considered to fluctuate largely based on camp host availability.

The Carr fire impacted the area in 2018 and should be considered when reviewing visitation and revenue. Additionally, the COVID-19 pandemic impacted recreational visitation in 2020. Steel Bridge, Junction City and Douglas City campgrounds delayed opening for 3 months. Group sites Ohl Olsen and Reading Island were closed in 2020.

Table 4: Seven Year Average for Nightly Campground Visits

Seven Year Average for Nightly Campground Visits FY 2014 to FY 2020*		
FY Year	RUP Visitor Days	Annual Revenue
2014	1554	\$20,614.21
2015	2029	\$27,368.05
2016	1002	\$14,747.40
2017	1161	\$16,761.40
2018	1700	\$22,500.77
2019	2284	\$31,295.33
2020	1945	\$28,733.27
2014-2020	Total: 11,675	Total Average: \$23, 145.71

*Please see Appendix 6.3 for 7-year visitation and revenue table for breakdown by year.

3.5.3. Identification of Cost Recovery Goals

The BLM Redding Field Office has identified the need for visitor use recreation fees to contribute more equitably to the cost of providing campgrounds and day-use areas to the recreating public. In review of the average operating costs for fee sites, it is seen that recreational users currently contribute about 9% toward the operating costs. With an increase in

efforts for fee compliance in addition to the implementation of proposed fees, and the proposed future use of recreation.gov for online reservations and secure payments, we seek to bring recreational fees to covering, at minimum, 50-75% of operating cost. It is projected that increased visitation through improved opportunities, increased fee and fee compliance efforts, and the implementation of online reservation systems (recreation.gov) that this level of cost recovery will be feasible.

4. Fee Proposal

4.1. Summary of Expanded Amenity Fee Updates and New Fees

Four campgrounds (Steel Bridge, Junction City, Douglas City, and Shasta Campground) and two group campgrounds (Ohl Olsen and Reading Island) are proposed for a fee increase. One campground, Steiner Flat, is proposed for a new fee. Douglas City Campground and Steel Bridge Campground have popular day-use areas nested within them, and they are proposed for a new day-use fee. Douglas City Campground's showers are proposed for a new fee.

To comply with Section 3(g)(2)(A) of FLREA, BLM must determine that recreation sites offer at least 5 of 9 specific amenities at those sites to charge an expanded amenity fee for the use of a developed campground. The following is that determination:

Table 5: Determination of Recreation Site Eligibility for Fee Collection

Required Amenities (Minimum of 5 of the following)	Douglas City Campground	Junction City Campground	Steel Bridge Campground	Steiner Flat Primitive Campground
Tent or Trailer Spaces	Yes	Yes	Yes	Yes
Picnic Tables	Yes	Yes	Yes	Yes
Drinking Water	Yes	Yes	No	No
Access Roads	Yes	Yes	Yes	Yes
Fee Collection by Employee or Agent	No, Proposed	No, Proposed	No, Proposed	No, Proposed
Reasonable Visitor Protection	Yes	Yes	Yes	Yes
Refuse Containers and Collection	Yes	Yes	Yes	No, Proposed
Toilet Facilities	Yes	Yes	Yes	Yes
Simple Devices for Containing Campfires	Yes	Yes	Yes	Yes

Required Amenities (Minimum of 5 of the following)	Shasta Campground	Ohl Olson Group Campground 1 &2	Reading Island Group Campground
Tent or Trailer Spaces	Yes	Yes	Yes
Picnic Tables	Yes	Yes	Yes
Drinking Water	Yes	Yes	No
Access Roads	Yes	Yes	Yes
Fee Collection by Employee or Agent	No, Proposed	Yes	Yes
Reasonable Visitor Protection	Yes	Yes	Yes
Refuse Containers and Collection	Yes	Yes	No
Toilet Facilities	Yes	Yes	Yes
Simple Devices for Containing Campfires	Yes	Yes	Yes

Based on the above information, it is determined that Douglas City, Junction City, Steel Bridge, Steiner Flat, Ohl Olson Group, Reading Island Group Campground, and Shasta campgrounds qualify as sites that can require an expanded amenity fee for use of the campground.

The required amenities of secure parking, tables, toilet, and defined recreation area for Standard Amenity fees are addressed in the table above, as day-users will be benefiting from the campground amenities at Douglas City and Steel Bridge campgrounds. However, day-users will not have the opportunity for overnight camping or the luxury of individual, exclusive use of camp site space.

4.2.Existing and Proposed Fee Types

All visitors utilizing recreation fee site amenities are required to obtain a recreation use permit (RUP). These permits can be obtained at self-service fee stations located near campground entrances. Now, it is proposed that these permits also be available on recreation.gov, the federal government's one-stop center for reservations and trip-planning information. The shift to the reservation system will be implemented first at the Ohl Olsen and Reading Island group campgrounds and at select campgrounds and sites at Trinity County. The transition to recreation.gov will be evaluated for public demand and satisfaction with the service and adjusted accordingly. To note, customers are charged additional fees for the use of recreation.gov and these charges pay for the recreation.gov service costs. Recreation staff, law enforcement and volunteer campground hosts all play a role in recreation fee site compliance. BLM staff directly

interface with visitors to ensure they clearly understand payment requirements and procedures. First come, first serve permit receipts must be displayed either on the campsite post or within view from the vehicle's front window. Recreation.gov users will have campsite markings provided and additional options may be explored for confirming payment and site occupancy. There is a consistent presence at recreation fee sites by BLM personnel. Compliance issues are addressed through the campground hosts, recreation staff, or law enforcement rangers as appropriate. The following sections identify the proposed fee structures that would be implemented. These proposed fees are also available as one comprehensive table in Appendix 6.2.

4.2.1. Expanded Amenity – Campground Fee Updates

1. Douglas City Campground

Douglas City Campground (elevation 1500') is located 7 miles south of Weaverville on Highway 299W, on the banks of the Trinity River, a half-mile from Douglas City off Steiner Flat Road. Access to the campground is via a paved loop. The recreation site is wooded, shady and includes a swimming area with a sandy beach and fishing opportunities. There are 24 tent/trailer camping sites, and one site is typically in use by the camp host. Sites include fire rings with campfire grills, bear boxes, tent pads and picnic tables. Potable water, flush toilets, showers (as of May 2012), universal access and a telephone are all available at the campground. There is a day-use area with a shower located directly within it to be discussed in standard amenity fees. River access for rafts and drift boats is also available from the campground. The campground is open mid-May through October 30, weather dependent.



Douglas City Campground	
Open:	Mid-May through November, weather permitting.
Reservations:	Currently first come, first served. Proposed for recreation.gov reservation system with implementation of new fee.
Current Fees:	\$10 fee charge per vehicle per night including parking for two vehicles, and \$5 per additional vehicle at each site. Senior and Access passes are the only accepted passes for fee discounts at expanded amenity fee sites per FLREA.
Proposed Fees:	An increase to \$20 per night including parking for 2 vehicles. \$6 per additional vehicle as space allows to a maximum of 4 vehicles per site. Senior and Access passes are the only accepted passes for fee discounts at expanded amenity fee sites per FLREA.
Number of Sites:	24 RV/tent sites with one site typically occupied by the camp host. Parking spurs are typically between 40- 70'
Group Picnic area	Yes
Usage:	Moderate
Restrictions:	Dogs must always be under the owner's control. This is bear country so food must be secured overnight and when not attended. Always keep a clean camp and do not feed animals.
Closest Town:	Douglas City, CA
Water:	Yes, there is a city water connection from Douglas City.
Restrooms:	Flush and Vault Toilets
Showers:	Yes, included with camping fee
Dump Station:	No
Host:	Yes. Recruiting a host for Douglas City Campground is regularly successful.
Other Amenities:	Boat Ramp access, proposed riverside trail access

2. Junction City Campground



Junction City Campground (elevation 1400') is located alongside Highway 299W and across the highway from the Trinity River, 1 1/2 miles north of Junction City and 9 1/2 miles from Weaverville. There are 22 tent/trailer campsites with one site sometimes in use by the camp host. Sites include fire rings with campfire grills, bear boxes, tent pads and picnic tables. Max trailer length for parking spurs is 40 feet. The campground also has potable water, vault toilets, universal access sites, a paved loop, and excellent fishing nearby in the Trinity River.

Junction City Campground	
Open:	Mid-May through November, weather permitting.
Reservations:	Currently first come, first served. Proposed for recreation.gov reservation system with implementation of new fee.
Current Fees:	\$10 fee charge including up to two vehicles, and \$5 per additional vehicle at each site. Senior and Access passes are the only accepted passes for fee discounts at expanded amenity fee sites per FLREA.
Proposed Fees:	\$15 per night to include parking for 2 vehicles. \$6 per additional vehicle as space allows to a maximum of 4 vehicles per site. Senior and Access passes are the only accepted passes for fee discounts at expanded amenity fee sites per FLREA.
Number of Sites:	22 RV/tent sites. Max trailer length is 40 feet.

Group Picnic area	No
Usage:	Moderate
Restrictions:	Dogs must always be under the owner's control. This is bear country so food must be secured overnight and when not attended. Always keep a clean camp and do not feed animals.
Closest Town:	Junction City, CA
Water:	Yes
Restrooms:	Vault Toilets
Dump Station:	No
Campground Host:	Yes. Recruiting a host is typically successful at Junction City Campground.
Other Amenities:	Directly adjacent to Highway 299. Primitive river access across highway.

3. Steel Bridge Campground

Steel Bridge Campground (elevation 1600') is located on Steel Bridge Road off Highway 299W, in the Douglas City area and is on the Trinity River. There are 12 camping sites with one site typically in use by the camp host. Sites include fire rings with campfire grills, bear boxes, tent pads and picnic tables. This area also includes vault toilets, a day-use parking area, and a nearby river access for rafts and drift boats. The campground has no potable water. The campground, the most remote of the Trinity River opportunities, is located approximately two miles off Highway 299 on a small rural road. Steel Bridge is open mid-May through December, or when winter weather forces closure, whichever occurs first. Max trailer length is 20 feet.



Steel Bridge City Campground	
Open:	Mid-May through November, weather permitting.
Reservations:	Currently first come, first served. Proposed for recreation.gov reservation system with implementation of new fee.
Current Fees:	\$5 fee charge per vehicle per night to include parking for up to two vehicles, and \$5 per additional vehicle at each site. Senior and Access passes are the only accepted passes for fee discounts at expanded amenity fee sites per FLREA.
Proposed Fees:	\$15 per night to include parking for 2 vehicles. \$6 per additional vehicle as space allows to a maximum of 4 vehicles per site. Senior and Access passes are the only accepted passes for fee discounts at expanded amenity fee sites per FLREA.
Number of Sites:	12 camping sites. Max trailer length is 20 feet.
Group Picnic area	No
Usage:	Moderate

Restrictions:	Dogs must always be under the owner's control. This is bear country so food must be secured overnight and when not attended. Always keep a clean camp and do not feed animals.
Closest Town:	Douglas City, CA
Water:	No
Restrooms:	Vault Toilets
Dump Station:	No
Campground Host:	Camp hosts are recruited every year, with historically less success at Steel Bridge. When no host is available, the host at nearby Douglas City Campground provides some coverage by checking in on Steel Bridge Campground bi-weekly at minimum. BLM recreation staff provide presence also at least bi-weekly to check in with campers.
Other Amenities:	Adjacent to Trinity River with easy fishing access.



Map 3: Chappie-Shasta Off-Highway Vehicle Area

4. Shasta Campground

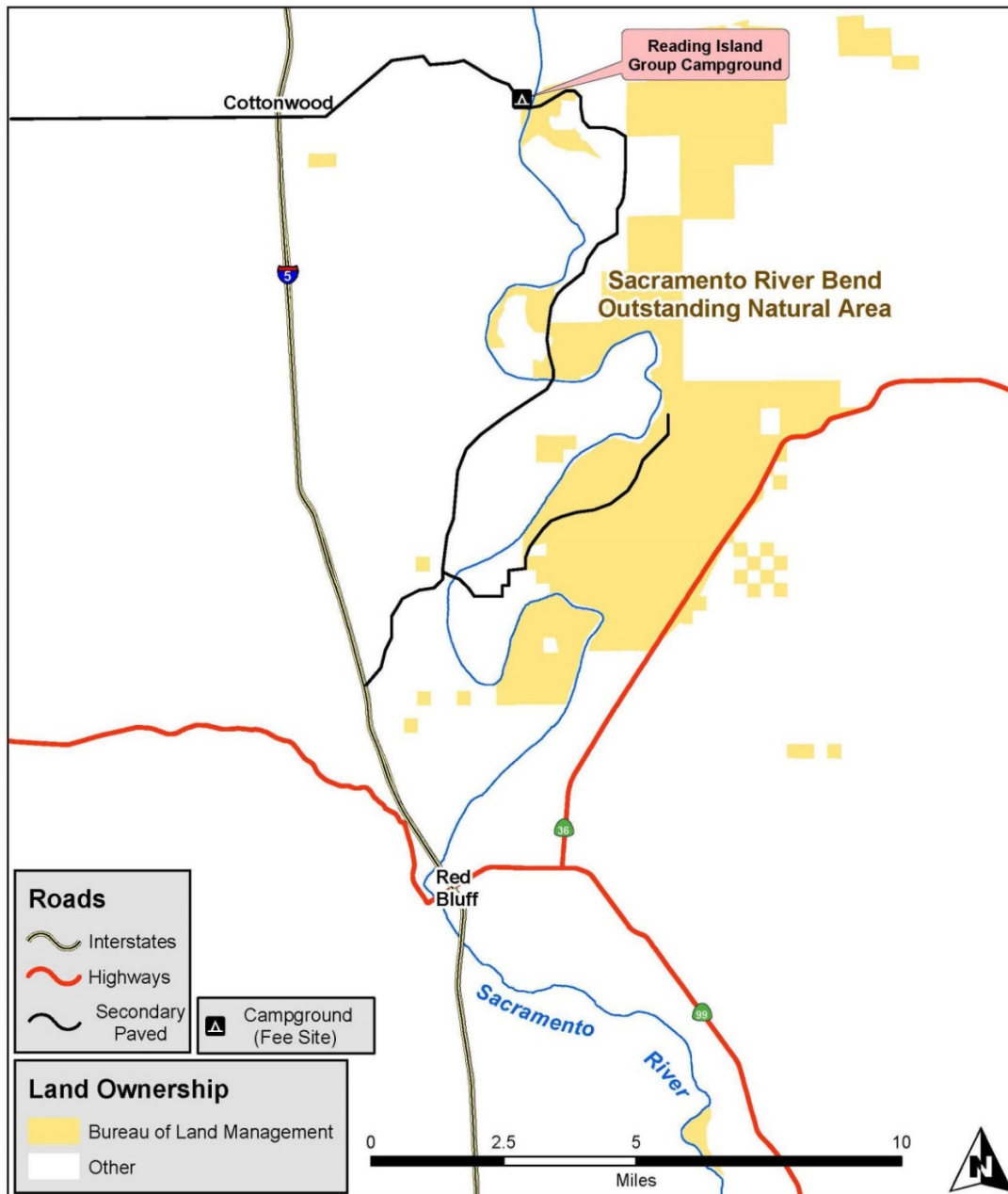
Shasta Campground (elevation 600') is located at the staging area for the Chappie-Shasta OHV Park on Coram Road below Shasta Dam, and along Keswick Reservoir. To cross the dam, a valid driver's license and vehicle registration are required, and vehicles and trailers may be subject to inspection. The campground includes 30 tent/trailer campsites with picnic tables and fire rings with grill. There is one dedicated camp host spot that is not opened for visitor use. The paved loop accesses all campsites and there are vault toilets, potable water is available, and there is additional parking for day/OHV use without concern for capacity. Shasta Campground is open year-round.



Shasta Campground	
Open:	Open All Year
Reservations:	First come, first served. Proposed for recreation.gov reservation system with implementation of new fee.
Current Fees:	\$10 fee charge per vehicle per night, to include parking for up to two vehicles. Senior and Access passes are the only accepted passes for fee discounts at expanded amenity fee sites per FLREA.
Proposed Fees:	\$20 per night to include parking for 2 vehicles. \$6 per additional vehicle as space allows to a maximum of 4 vehicles per site. Senior and Access passes are the only accepted passes for fee discounts at expanded amenity fee sites per FLREA.
Number of Sites:	30 tent/trailer camping sites.
Group Picnic area	No
Usage:	Moderate
Restrictions:	Dogs must always be under the owner's control. Always keep a clean camp and do not feed animals.

Closest Town:	Shasta lake, CA
Water:	Yes
Restrooms:	Vault Toilets
Dump Station:	No
Campground Host:	Yes
Other Amenities:	Adjacent to Sacramento River, Sacramento River Rail Trail and Chappie-Shasta OHV Area.

Reading Island Group Campground



Map 4: Reading Island Group Campground

5. Reading Island Group Campground



Reading Island Group Campground (elevation 600') is located approximately 5 miles east of Cottonwood, CA along the Sacramento River. The campground is popular with scout groups and boaters. The campground is typically used as an overnight stop for boaters on extended canoe, raft, or kayak trips on the Sacramento River. The group site provides two picnic tables, vault toilet, information kiosk, and a large fire ring with grill.

Reading Island Group Campground	
Open:	Open All Year
Reservations:	By reservation only through the Field Office front desk using a Recreation Use Permit. Proposed for recreation.gov reservation system with proposed fee update.
Current Fee:	\$90 per night, limited to 20 people.
Proposed Fee:	\$90 per night up to 20 people, \$6 per additional person up to 30 people total
Number of Sites:	One group site
Group Picnic area	Yes
Usage:	Low

Restrictions:	Campfires in fire ring only
Closest Town:	Cottonwood, CA
Water:	No
Restrooms:	Vault Toilet
Dump Station:	No
Campground Host:	No; however, resident caretakers of the Sacramento Bend are available for contact and provide some monitoring of the area.
Other Amenities:	Adjacent to Sacramento River and the Sacramento Bend Outstanding Natural Area

4.2.2. Expanded Amenity- New Fee

1. Steiner Flat Campground



Steiner Flat Campground (elevation 1500') is located 2 miles down the Trinity River from Douglas City Campground on Steiner Flat Road. There are currently 8 campsites suitable for small trailer or tent camping, each with a picnic table, campfire ring and grill. Proposed campground development would add up to 12 new sites and upgrade all to have a durable spur parking pad, tent pad, bear box, picnic table, and fire ring with grill. An additional vault toilet would be installed. There is no potable water. Significant development of informational and interpretive kiosks is proposed within the campground. The campground provides two riverside trail spurs with additional access to the river. The campsite amenities would be in place before the new fee is implemented.

Steiner Flat Primitive Campground	
Open:	Mid-May through November, weather permitting.
Reservations:	First come, first served. Proposed for recreation.gov reservation system with implementation of new fee.
Current Fees:	No fee.
Proposed Fees:	\$15 per night to include parking for 2 vehicles. \$6 per additional vehicle as space allows to a maximum of 4 vehicles per site. Senior and Access passes are the only accepted passes for fee discounts at expanded amenity fee sites per FLREA.
Number of Sites:	8 camping sites. Max trailer length is 20 feet. Campground development is proposed to expand the number of sites up to 15-20, and provide greater amenities (bear boxes, tent pads, paved parking spurs, additional vault toilet, riverside trail).
Group Picnic area	No
Usage:	Moderate
Restrictions:	Dogs must always be under the owner's control. This is bear country so food must be secured overnight and when not attended. Always keep a clean camp and do not feed animals.
Closest Town:	Douglas City, CA
Water:	No
Restrooms:	Vault Toilet
Dump Station:	No

Campground Host:	No; with proposed fee a host would be provided to help provide sense of security and to maintain the campground for positive experience.
Other Amenities:	Adjacent to Trinity River with easy fishing access; proposed riverside trail from CG

2. Ohl Olson Group Campground

The campground is located near the main staging area for the Chappie-Shasta OHV Area on Coram Road below Shasta Dam (elevation 600'). To access the group campground, visitors must cross Shasta Dam (dam hours are 6AM to 10PM), which requires a valid driver's license, vehicle registration, and vehicles and trailers may be subject to inspection. The campground includes picnic tables, fire rings with grills, a vault toilet, garbage cans, and a shade structure.



Ohl Olson Group Campground	
Open:	Open All Year (by reservation only)
Reservations:	Yes, through Field Office front desk. Proposed for recreation.gov reservation system with fee change.
Current Fees:	No recreational use permit (RUP) fee established.
Proposed Fees:	\$60 (max 30 people) for the lower site; \$80 (max 50 people) for the larger upper site.

Number of Sites:	2 group sites
Group Picnic area	Yes
Usage:	Low
Restrictions:	Dogs must always be under the owner's control. Always keep a clean camp and do not feed animals.
Closest Town:	Shasta Lake, CA
Water:	No
Restrooms:	Vault Toilet
Dump Station:	No
Campground Host:	No.
Other Amenities:	Adjacent to Chappie-Shasta OHV Area.

4.2.3 Standard Amenity Fee – New Fees



1. Douglas City Day-Use area within Douglas City Campground

Douglas City Campground was built approximately 25 years ago with a day-use style area nested within its design. Currently, the day-use area provides a scenic river overlook with 5 picnic tables, 3 grills, a paved parking area for up to approximately 10 cars, and a primitive river access ramp.

As visitation increased, parking spread outside of established parking, and day-use began to compete with campers use in a limited beach area and for use of amenities such as flush toilets. The day-use fee will also ensure that day-users are contributing to services, such as trash removal and maintenance costs.



2. Douglas City Showers within Douglas City Campground

Douglas City Campground is the only campground within the BLM Redding Office that offers showers. Offering showers for \$2.00 to folks not camping in Douglas City campground, but likely recreating on BLM nearby is proposed in this business plan. By offering the shower for a fee, we seek to increase opportunities for dispersed campers and campers using our developed campgrounds in the immediate area.

3. Steel Bridge Day-Use area within Steel Bridge Campground



Steel Bridge Day-Use popularity is directly related to a primitive ramp (pictured) that people enjoy tubing and paddling from. In addition, this beach-like ramp is located a short distance down a popular fisherman's trail, with a highly fishable spot known as Lime Kiln in the area. Recreational boaters are also known to park in the last turn around at the end of the campground for more secure parking while they float.

4.3. Fee Calculation

4.3.1. Fair Market Value

BLM policy proposes the use of two methods to calculate proposed recreation fee rates: cost recovery and fair market value. With the cost recovery method, a fee rate is calculated to provide revenue to cover most of the projected annual operating and maintenance costs. With the fair market value method, a fee rate is calculated to be comparable with fees charged at similar or comparable federal, state, and local recreation sites. The analysis in this business plan uses the fair market value method. For each respective site, an analysis of comparable fees charged by similar state, federal, and local park facilities was completed. Of note, USFS is proposing a fee increase that is different than what is shown in the table.

To determine whether BLM campground permits are currently priced at a fair market rate, an assessment of fees at other area campgrounds was conducted. This survey revealed that all BLM campgrounds are currently priced below other area campgrounds with similar amenities.

Table 6: Fair Market Analysis- Expanded Amenities for Trinity River Vicinity

Trinity River Vicinity	Expanded Amenity Fees Current	Drinking Water	Toilets	Agency/ Private
Douglas City Campground	\$10/night, proposed \$20/night	Yes	Flush	BLM
Junction City Campground	\$10/night, proposed \$15/night	Yes	Vault	BLM
Steel Bridge Campground	\$5/night, proposed \$15/night	No	Vault	BLM
Steiner Flat Primitive CG	No Fee, proposed \$15/night	No	Vault	BLM
Big Flat Campground	\$12/night	Yes	Vault	USFS
Ackerman Campground	\$20 to \$35/night, \$6 per extra vehicle	Yes	Flush	USFS
Alpine View Campground	\$20 to \$35/night, \$6 per extra vehicle	Yes	Flush/ Vault	USFS
Bushytail Campground	\$20/night, single site/nonelectric	Yes	Flush	USFS
Horse Flat Campground	Free	No	Vault	USFS
Eagle Creek Campground	\$15/night, \$6 per additional vehicle			
Minersville Campground	\$15 per day single w/spur parking pad	Yes	Vault	USFS
Preacher Meadow CG	\$12/night, \$5 per additional vehicle	No	Vault	USFS
Rush Creek Campground	\$10/night, \$6 per additional vehicle	No	Vault	USFS
Trinity River Campground	\$10/night, \$6 per additional vehicle	No	Vault	USFS
Coffee Creek Campground	\$20/night tent, \$30/night RV site w electricity	Yes	Flush	Private
Old Lewiston Bridge RV Resort	\$22/night tent, \$34/night full hook-up site	Yes	Flush	Private

Table 7: Fair Market Analysis- Standard Amenities for Trinity River Vicinity

Trinity River Vicinity	Standard Amenity Fees	Drinking Water	Toilets	Agency/ Private
Douglas City Day-Use	No fee, proposed \$6	Yes	Yes	BLM
Douglas City Shower	No fee, proposed \$2	Yes	Yes	BLM
Steel Bridge Day-Use	No fee, proposed \$6	No	No	BLM
Old Lewiston Bridge RV Resort	\$5.00 Shower	Yes	Flush	Private

Cooper Gulch Day-Use	\$10.00 per day	Yes	Vault	USFS
Clark Springs Day Use Area and Beach	\$10.00 per day	Yes	Vault	USFS
Whiskeytown National Recreation Area	7-day pass: \$25.00/vehicle or \$15/pedestrian	Yes	Flush	NPS

Table 8: Fair Market Analysis- Expanded Amenities for Shasta Campground

Chappie Shasta Vicinity	Expanded Amenity Fees	Drinking Water	Toilets	Agency/Private
Shasta Campground	\$10/night, proposed \$20/night	Yes	Vault	BLM
Oak Bottom Campground	\$35 to \$20/night	Yes	Flush/Vault	NPS
Crystal Creek Campground	\$20/night	No	Vault	NPS
Antlers Campground	\$23/night for 1 vehicle and 8 people; \$46/night for 2 vehicles and 12 people. \$8 per additional vehicle where possible	Yes	Flush/Vault	USFS
Bailey Cove	\$23/night for 1 vehicle and 8 people; \$46/night for 2 vehicles and 12 people. \$8 per additional vehicle where possible	Yes	Flush	USFS
Ellery Creek Campground	\$23/night for 1 vehicle and 8 people; \$46/night for 2 vehicles and 12 people. \$8 per additional vehicle where possible	Yes	Vault	USFS
Lakeshore East Campground	\$23/night for 1 vehicle and 8 people; \$46/night for 2 vehicles and 12 people. \$8 per additional vehicle where possible	Yes	Flush	USFS
Lower Jones Valley CG	\$23/night for 1 vehicle and 8 people; \$46/night for 2 vehicles and 12 people. \$8 per additional vehicle where possible	Yes	Vault	USFS
Green Acres RV Park	\$43/RV full-hook ups per night	Yes	No Service	Private
Premier RV Park	\$50/night partial hook-ups electric and water only, \$60.50/night premier hook-ups with longer pull-throughs	Yes	Flush	Private

Table 9: Fair Market Analysis- Expanded Amenities for Group Campgrounds

Group Campgrounds in the Vicinity of Redding	Expanded Amenity Fees	Drinking Water	Toilets	Agency/ Private
Ohl Olson Group Campground	No fee, proposed \$60 for upper site, \$80 for lower site	No	Vault	BLM
Reading Island Group Campground	\$90 per night, proposed \$90 for 20 people and \$6 per additional person up to 30 people	No	Vault	BLM
Camp Discovery Group Campground	\$175 (max 100 people)	Yes	Vault	USFS
Dekkas Rock Group Campground	\$150 (max 60 people)	Yes	Vault	USFS
Mariners Point Group Campground	Consists of two loops, \$110 per loop per night	Yes	Vault	USFS
Stony Creek Group Campground	\$110 (max 80 people)	Yes	Flush	USFS
Moore Creek Group Campground	\$150 (max 90 people)	Yes	Vault	USFS
Pine Point Group Campground	\$150 (max 100 people)	Yes	Vault	USFS
East Weaver Group Campground	\$110	Yes	Vault	USFS
Dry Creek Group Campground (tent only)	\$80 (max 50 people)	Yes	Vault	NPS

The proposed updates to expanded amenity fees for campgrounds are comparable to providers in each respective market for location and access to recreational opportunity. The locations provided by private business typically include amenities such as wifi and electricity that are not comparable to the BLM Redding campgrounds. Shasta-Trinity National Forest (STFS) offers recreation sites in abundance in the vicinity of BLM areas, and the tables represent a proportionate sampling in the area. STFS campgrounds offer more comparable amenities, such as vault toilets and drinking water.

The proposed updates to Standard Amenity fees for day-use areas are comparable to STFS and Whiskeytown National Recreation Area and the BLM proposed fee is adjusted to reflect the much smaller recreational space available. The amenities offered by BLM are similar in nature with beach access, tables, and flush or vault toilets. The BLM shower at Douglas City Campground offers two large but basic shower stalls, with no additional amenities or service as

offered by the local private business. Therefore, the minimum charge to help cover maintenance of the water system and facility was applied.

4.3.2. Financial Projection

Financial projections require good-faith assumptions and professional estimates so that we may feel confident that we can catch a glimpse of the future with the proposed updates and new fees in place.

The history of campground visitation at Douglas City and Steel Bridge campgrounds are known by observation to be full on weekends, with weekdays varying from 30-75% full. Junction City campground is known to be less popular (3 months at 10% capacity) until closer to fall with fishing and hunting season (3 months at 90% weekends, 30-75% on weekdays). Since Steiner Flat Campground is within a mile of Douglas City campground, we will assume a similar visitation pattern with Steiner Flat amenities upgraded and the proposed fee in place. Day-Use visitation and fee compliance will be considered to trend in the same fashion as campground compliance (as the day-use areas are nested within the campgrounds). Trinity campgrounds close when winter weather sets in around October and open toward Memorial Day, providing a 6-month window for visitation with fees. In contrast, the Shasta Campground is in a more heavily used, year-round OHV area with more consistent use. Shasta Campground is observed to be 100% full on weekends and 30% full on weekdays in busy season, which pushes the shoulder seasons. Shasta Campground is observed to be 20% full and at 10% for the remaining approximate 6 months of the year in the hotter summer season. With the consistent full weekends and slow weekdays, and with additional slower time in hotter months, the combined average use at Chappie-Shasta campground is set as using 40% of year-round, available sites.

Reading Island and Ohl Olsen group campgrounds are available year-round, however, it is unknown what impact an online reservation system will have on low visitation. Currently, the sites are reservable through the front desk only and a gate must be opened for visitors to use them. Neither campground has exceeded 6 reservations a year. Due to the unknown impact of greater visibility and the ease of reserving them online, these sites will not be considered in the financial projection. Similarly, the proposed shower fee at Douglas City campground is not considered, as the amount of potential use is unknown. The frequency of requests for showers does indicate it may have popularity, but that is all.

All campgrounds within the Redding Field Office are considered to fluctuate in fee compliance depending on camp host and camp host availability. The “little yellow envelopes” or recreation use permits (RUPs) people use to pay campground fees are also the sole source of visitation data beyond observational data. Additionally, use patterns are frequently interrupted by fire season, and most recently, COVID-19 disrupted campgrounds opening schedule by a minimum of three months in 2020. It is also yet to be seen how much any improvements and/or additions to recreational infrastructure will increase visitation to these areas. By considering observational

data, RUPs visitation data, and the known fluctuations due to fire, a financial projection is considered possible only as a rough approximation. If the Redding Field Office obtained a solid average of full payment at 50% capacity annually, then we can see the proposed fee brings us to a more sustainable financial situation with operating costs covered just at 75%. Only this basic and rudimentary exploration of a financial projection at 50% capacity with new and updated fees is explored in the table below.

Table 10: Financial Projection at about half-full, 100% fee compliance

Recreation Area	Amenity Type	# of Sites	Occupancy/Compliance Average	Proposed Fee	Projected Revenue
Steiner Flat Campground	Expanded	20	At 50% for 6 months	\$15	\$27,000
Douglas City Campground	Expanded	23	At 50% for 6 months	\$20	\$41,400
Douglas City Day-Use	Standard	10	At 50% for 6 months	\$6	\$5,400
Steel Bridge Campground	Expanded	11	At 50% for 6 months	\$15	\$14,850
Steel Bridge Day-Use	Standard	5	At 50% for 6 months	\$6	\$2,700
Junction City Campground	Expanded	21	At 30% for 6 months	\$15	\$17,010
Shasta Campground	Expanded	30	40% Full year	\$20	\$87,600
				Total:	\$195,960

The financial projections under the current level of fluctuating visitation reveals cost recovery of \$195,960, which is 76% of projected operational costs, bringing the Redding Field Office to a more sustainable financial situation for providing quality recreational opportunities. Increase in visitation and/or increase in fee compliance would help meet costs specific to the recreating public and provide revenue for high quality recreational opportunities and their continuous maintenance needs. Improvements to the facilities, expanded recreational opportunities, and an online reservation system are anticipated to increase visitation and revenue, however, it is unknown by how much.

4.3.3. Use of Fees

The historical norm for funding recreational site operations and maintenance is to draw on base appropriated sources and for the field office to supplement that funding with fee revenues collected within the specific field office. The base funding dollars for recreation sites have been flat to decreasing over past years due to inflation and administration priorities. With the proposed

fees and development of recreational programming in the field, we seek to modernize BLM recreation sites for the enjoyment of the recreating public. Below are key ways the BLM Redding Field Office would put recreation fees to this purpose:

- Additional vault toilets within the area as needed. Priority areas include the extremely popular Grapevine Swimming Hole within a few miles of Junction City Campground and in Steiner Flat and Junction City Campground.
- Service contracts as needed for site opening procedures, restroom cleaning, garbage collection, septic pumping, and water testing.
- Coverage for cost of staff in the field for positive visitor contacts, providing information, and providing for the overall sense of health and safety in recreation sites.
- Tables, campfire rings, bear boxes and tent pad materials to develop 15-20 sites at Steiner Flat Campground, and 5-10 of each amenity for replacement at campgrounds and adjacent day-use areas.
- Landscaping for promotion of native species and sedimentation reduction in the riparian corridor.
- Development of greater beach and ramp access as day-use for sustainability at beaches within or near campgrounds.
- Construction of a riverside trail to incorporate pre-existing trail from Lorenz Swimming Hole and River access through Dump Hole River Access and to the proposed day-use area of Douglas City Campground. This 4–5-mile trail would serve three recreation sites with no proposed fee, and three of the fee areas proposed in this plan: Douglas City Campground and Day-use area and the Steiner Flat Campground.
- Maintain and improve existing environmental education and interpretive information services.
- Expand the multi-use trail system for greater connectivity between communities and recreation areas

4.3.4. Impact of Fee Changes

Underserved Communities. BLM campgrounds remain an affordable option within the Trinity, Shasta, and Tehama areas. In the fair market analysis and in cost recovery consideration, the BLM Redding has taken into consideration affordability, opting to find the lowest sustainable fee option as shown in the financial projection, with no high-cost superfluous amenities proposed. The improvement of campgrounds is expected to expand recreational opportunity for underserved communities through provision of greater maintenance and infrastructure such as tables and fire rings, sustainable swimming and boating access and non-motorized trails within the immediate area of recreation sites.

Impact on Local Business. Proposed fees are currently at or below market rate; no adverse impacts to local business owners or other campground operators are anticipated. Campground use is projected to remain at the same level or possibly increase over time as visitors learn of the new amenities being offered at BLM campgrounds. The potential for increased visitation may be beneficial for local businesses in multiple communities particularly in Lewiston, Weaverville, Douglas City, Junction City, and Redding.

5. Public Outreach

5.1. Public Communication and Marketing Plan

As part of the proposal to modify recreation site fees, the Redding Field Office has been and will continue to conduct the following outreach to notify the public of its opportunity to review and provide comments:

- Public notice of proposed fee changes will continue to be posted onsite until implemented.
- News releases will be provided to local news outlets, informing the public of the proposed fee changes, and requesting public comment.
- Both the public notice and news releases will contain contact information for public comments on the proposed fee changes.
- Website information will inform the public of the proposed fee changes.
- Fee signs and paper materials will reflect the proposed fee changes, including notice of the fee rate(s), the passes that are accepted, and where the fees are charged.
- The BLM Redding Field Office will present the campground fee increase proposal to the BLM California Recreation Resource Advisory Council (RAC). The FLREA mandates that the appropriate Recreation RAC reviews all BLM recreation fee proposals prior to approval. Comments from both the public at large and the BLM California RAC will be considered prior to approval of the Redding BLM business plan.
- A Notice of Intent to Collect Recreation Fees will be published in the Federal Register six months before initiating new fee collection for Steiner Flat Campground, Ohl Olsen Campground, for showers at Douglas City Campground, and for day-use opportunities at Douglas City and Steelbridge Campgrounds.
- The BLM monitors visitor uses to detect changes in site utilization, and documents written and oral communication from the public. Business plan review occurs on a biennial schedule from the date of the last signature. Future adjustments to approved fee schedules will reflect public comment and program implementation needs. Fee expenditure information is collected on an annual basis and presented in the Public Land Statistics available online at https://www.blm.gov/public_land_statistics/. More specifically, each recreation site will post fee expenditure information on site and online to inform the public

where and on what services, maintenance, and operations their fees are spent.

6. Appendices

6.1. Proposed Fees – Comprehensive Tables

Table 11: Proposed Updated Expanded Amenity Fees

Douglas City Campground	\$20 per night to include parking for 2 vehicles. \$6 per additional vehicle as space allows with a maximum of 4 vehicles per site.
Junction City Campground	\$15 per night to include parking for 2 vehicles. \$6 per additional vehicle as space allows with a maximum of 4 vehicles per site.
Steel Bridge Campground	\$15 per night to include parking for 2 vehicles. \$6 per additional vehicle as space allows with a maximum of 4 vehicles per site.
Shasta Campground	\$20 per night to include parking for 2 vehicles. \$6 per additional vehicle as space allows with a maximum of 4 vehicles per site.
Reading Island	\$90 per night to 20 people. Additional cost per person of \$6, up to 30 people

Table 12: Proposed New Expanded Amenity Fees

Steiner Flat Campground	\$15 per night to include parking for 2 vehicles. \$6 per additional vehicle as space allows with a maximum of 4 vehicles per site
Ohl Olson Group Campground	\$60 (max 30 people) for the lower site; \$80 (max 50 people) for the upper site

Table 13: Proposed New Standard Amenity Fees

Douglas City Day-Use	\$6 per day, includes one night parking for shuttling
Douglas City Showers	\$2 per shower
Steel Bridge Day-Use	\$6 per day, includes one night parking for shuttling

Table 14: 7-year Visitation and Revenue table for Breakdown by Year

	FY14		FY15		FY16		FY17		FY18*		FY19		FY20	
	RUPS	Revenue	RUPS	Revenue	RUPS	Revenue	RUPS	Revenue	RUPS	Revenue	RUPS	Revenue	RUPS	Revenue
Shasta CG	414	\$6,660.90	419	\$5,440.56	285	\$4,761.25	325	\$5,383.25	402	\$6,900.67	775	\$13,094.04	762	\$13,796.65
Ohl Olson Group CG *Issued as SRP								Developed New CG	3 SRP	\$450	6 SRP	\$660	6 SRP	\$660
Steel Bridge CG	339	\$2,565.91	410	\$3,355.24	164	\$1,349.25	184	\$1,488.25	259	\$1,727.06	331	\$2,457.00	255	\$1,921.01
Douglas City CG	521	\$8,228.90	824	\$14,187.25	357	\$6,404.35	424	\$7,254.35	701	\$10,391.20	680	\$10,482.49	513	\$8,117.70
Steiner CG (Free CG)														
Junction City CG	280	\$3,158.50	376	\$4,385.00	196	\$2,232.55	228	\$2,635.55	338	\$3,481.84	498	\$5,261.80	415	\$4,897.91
Reading Island Group CG – Currently Reserve/ RUP	3	\$360	6	\$630	6	\$540	3	\$360	4	\$360	4	\$540	NA COVID	NA COVID