

San Rafael Swell Recreation Area Advisory Council

Zoom Meeting Minutes

August 10 and 11, 2021

August 10th, 2021 Meeting –

Meeting attendees

- San Rafael Swell Recreation Area Advisory Council (RAAC) members: Kent Wilson, Leslie (Les) K. Wilberg, Rodney (Rod) Player, Sue Bellagamba, and Elven (Leon) McElprang.
(Wade Allinson was not in attendance)
- BLM employees: Lance Porter, Lisa Everett-Stringer, Chris Conrad, Amber Koski, Stephanie Howard, Dana Truman, Jaydon Mead, Myron Jeffs, Blake Baker, Molly Hocanson, and Dakota Ray
- Members of the public:
Fox 13 News, Jim Jennings, Kristopher Carambelas, Wendy Lessig, Judi Brawer, Leo Hardy, Reid Persing, Kelsey Cruickshank, and Ray Petersen.

Welcome and Introductions

- Amber Koski opened up the meeting and went over some Zoom meeting etiquette. She turned the time over to Lisa Everett-Stringer.
- Lisa Everett-Stringer, Associate District Manager started the meeting by welcoming everyone to the meeting and introducing herself. She is standing in for Lance Porter this morning because he had a prior commitment. Lisa turned the time over to the Chairperson Les Wilberg.
- Les Wilberg introduced himself as the chairperson of the RAAC. Les then welcomed the members of the public to the meeting and thanked them for their interest in the San Rafael Swell Recreation Area.

Presentation of Agenda Items (see Attachment C)

- Les Wilberg did an overview of the Agenda Items for the meetings.

Overview of Special Status Species (see Attachment D)

Presenter: Dakota Ray, Wildlife Biologist

- Dana Truman, Assistant Field Manager for Recreation and Heritage Resources gave an introduction on herself and the Biologists in the Price Field Office that deal with Special Status Species: Dakota Ray, Kegen Benson, and DaShell Burnham. They all contributed to the presentation.
- Special Status Species definition: collectively, federally listed or proposed and BLM sensitive species, which include both Federal candidate species and delisted species.
- Bureau Sensitive Species are those that require special management consideration to avoid potential future listing under the Endangered Species Act.
- There are a lot of special status species present in the Recreation Area.

- There are numerous Laws, Regulations and Policy that guide how the BLM addresses and manages Special Status Species and their habitat including: The Federal Land Policy and Management Act, Endangered Species Act, Migratory Bird Treaty Act, Special Status Species Management BLM Manual, Price Field Office RMP, and Secretarial Order 3362.
 - Endangered Species Act (ESA) of 1973 –
 - Protect and recover imperiled species and the ecosystems on which they depend. Administered by the U.S. Fish and Wildlife Service(USFWS) and the Commerce Department’s National Marine Fisheries Service.
 - Species are listed either as Endangered (in danger of extinction) or Threatened (likely to become endangered).
 - 9 Federally listed species within the Recreation Area: Last Chance townsendia, Wright fishhook cactus (very sensitive to soil disturbance), San Rafael cactus (on the Wedge Overlook and endemic to Emery County), Winkler cactus, Barneby reed-mustard, Jones cycladenia (also sensitive to soil disturbance), Mexican spotted owl (recreationists hike and ride through their habitat), Southwestern willow flycatcher, and Yellow-billed cuckoo (recreationists boat, float and hike in their habitat).
 - BLM Special Status Management Manual
 - The objectives of the BLM special status policies are: to conserve and/or recover listed species and their ecosystems so protection is no longer needed, and to initiate conservation measure that reduce or eliminate threats and the need for the species to be listed.
 - There are 23 BLM Special Status Species in the Recreation Area including: Mussentuchit gilia (subject to trampling and development), Maguire daisy, Burrowing owl, Golden eagle, Western bumble bee, kit fox (habitat is being degraded), Bluehead sucker, and Roundtail chub (sensitive to invasives and waterflow).
 - The goals of the Price Field Office Resource Management Plan are to:
 - Maintain, protect, and enhance habitats and actively promote recovery, maintenance, protection, and enhancement of populations and habitats to ensure that actions authorized do not contribute to the need for species to be listed under ESA.
 - Assist in managing, conserving, and recovering listed species within the Price planning area.
 - The objectives of the Price Field Office Resource Management Plan (RMP) are to:
 - Recognize and support the role of the USFWS in managing federally listed species.
 - In consultation with USFWS and Utah Division of Wildlife Resources (UDWR) apply species-specific protective stipulations on federal actions to avoid or minimize adverse effects on federally listed, proposed, or candidate species or suitable habitat for those species.
 - Maintain adequate information regarding the extent of special status species to make informed decisions and to evaluate

management decisions. This is completed in partnerships with other federal, state, county, and private partners.

- Dakota showed a map that represented the current recreation at the Wedge and Good Water Rim Trail area. There are a lot of recreation opportunities in this area and it is also suitable habitat for many Special Status species. Since the 2008 Price RMP there has been a 225% increase of routes within the San Rafael cactus occupied habitat. There have been stipulations put in place on Federal actions in this area for the cactus, bighorn and Mexican spotted owl.
 - San Rafael Cactus - Was listed as endangered in 1987, occurs exclusively in Emery County, out of 20 populations, 85% of those occur on BLM managed lands. Threats to this species include OHVs, development, recreation and grazing. Monitoring of the cactus is ongoing.
 - Mexican spotted owl – Listed as endangered in 1993, threats to this species are vehicle use or disturbance, loss of foraging and nesting habitat. They are sensitive to noise so the USFWS mandates a half mile buffer from routes. Inventories have been minimal of Price BLM Lands, several surveys have been completed on Moab managed lands. Currently in the process of contracting for completion of surveys in and around the Recreation Area.
 - There is a lot of potential habitat for Mexican spotted owl within the Recreation Area. The surveys are going to determine the suitability of all this habitat.
 - Desert bighorn sheep – This species can be seen throughout the Recreation Area. They inhabit slick rock, rocky slopes, and canyonlands. The UDWR Statewide Management Plan for bighorn sheep lists the following issues and concerns: development within lambing habitat, habitat fragmentation by roads and trails, disease transmitted from domestic stock, predation, and competition with livestock, feral animals and other ungulates.
 - The Price Field Office RMP discussed Desert bighorn sheep and the need to have a seasonal closure on lambing areas (April 15-June 15) for the recruitment period.
 - The BLM works with UDWR to help manage the habitat and put conservation measures into place to reduce impacts to the species.
 - Maguire daisy – This species is endemic to Wayne, Garfield, and Emery Counties. It is found on Navajo and Wingate sandstone. Populations are found in cracks and crevices of sandstone cliffs and domes, and also found in sandy wash bottoms. The wash bottoms are where many ATV trails are located which is a threat to this species.
 - BLM partnered with Emery County and local OHV groups to educate riders and users. They also worked on monitoring populations and trails for conformance.
 - With this effort the BLM was able to present their findings of population stability to the USFWS and the plant was delisted in 2011.
 - Roundtail chub – This species is found in the San Rafael River and is managed under a conservation agreement. Threats to the Chub include habitat loss, degradation and fragmentation.

- The Lower San Rafael River restoration project is outside of the Recreation Area. This work, however, will help reduce the impacts of an exotic species, tamarisk, and give native plants like cottonwood and willow and chance to reestablish. This will bring natural processes back into the river and will help with recovery of the species.

RAAC Member Discussion:

- By saying there has been a 225% increase in routes in the last 20 years that are threatening the San Rafael cactus makes it sound like there are a large amount of new trails out there. Is it because of a better inventory? Yes, the 225% is within the habitat for the cactus. This is recorded as part of more monitoring and inventorying. The increase at the Wedge area is from pushing occurring in dispersed campsites every year. The trails are user created not designated. The response is to perform mitigation to try to stop this pushing and to rehabilitate the sites.
- Drought should be included as an effect to plants, animals, etc. Mexican spotted owl prey are tied to vegetation. The UDWR have been publishing news articles and effects to big game. There are cactus and plants dying on the desert. There is need to document this to show how many are being lost to drought. There is substantial pinyon-juniper die off occurring due to drought.
- The Mexican spotted owl habitat in the San Rafael Swell has been modeled as potentially suitable, but not surveyed and none of the owls have been found? There is record of Mexican spotted owl but it was in Range Creek. BLM will be working with USFWS to develop a survey protocol and surveys will be initiated next year.
- Special status species have multiple threats. The RAAC should be aware of these and be diligent to abate the effects we can control to get these off of the species list.
- Does NEPA cover the Special Status Species? Yes, during the Interdisciplinary process special status species are brought forward as a concern and that is analyzed in the NEPA document.
- Is there a standard buffer for sensitive species impacts set in the Resource Management Plan? For instance, a standard buffer from a linear road or trail? The buffer is species specific and also influenced by the activity.

Recreation Update (see Attachment E)

Presenters: Jaydon Mead, Blake Baker and Myron Jeffs, Outdoor Recreation Planners, PFO BLM

- Campground Business Plan, Quick Review:
 - What was approved? \$15 a night for individual sites, \$75 a night for all group sites.
 - Fees have been raised at existing sites including the Swinging Bridge Campground.
 - 12 new campgrounds approved for future fee collection.
- Buckhorn Draw Improvements
 - Installed 2 new bathrooms, kiosks, concrete picnic tables and fire rings. There are 4 large group sites, 28 individual sites, and 8 day use only locations.
 - Still needed: Signs and fee tubes installed, and access roads improved.

- Swinging Bridge Improvements: Increased the size of the corrals at the Equestrian Campground, and replaced damaged fence with large rocks. Have purchased and plan to install shade structures. Plan to provide more recreation/trail information. Still need to build a cattle fence around the fee site.
- Temple Mountain Town Site and South Temple Wash Improvements: 22 picnic tables are being delivered August 13th. Still need: shade structures at South Temple Wash, improved site delineation, and to provide more recreation/trail information on nearby opportunities.
- Little Wild Horse Campground: Hoping to alleviate overflow camping issues. The Dingell Act Conveyance will expand Goblin Valley State Park. The NEPA is ongoing for this campground.
 - Partnership with Goblin Valley
 - Special Status plant surveys completed
 - Formal consultation with USFWS is now proceeding
 - Up to 65 total individual campsites
 - Up to 9 open air vault toilets
 - Amenities would include driveway, fire ring and picnic table
- Wedge Area Improvements: 3 trailhead developments, new bathroom facilities along Good Water Rim Trail, new signs, and boulders to keep people on established roads. Currently planning for campground development.
- Swinging Bridge Campground Visitor Use data presented. The numbers continue to rise. It is anticipated that developments in Buckhorn Draw may draw some people away from these fee sites. Numbers only represent those who actually paid fees at the site.
- Other Visitor Use Updates: Installed 20 new TRAFx counters. These will give BLM better visitor use trend data. Plans to work with Emery County Trails Committee to install and maintain more.
 - TRAFx Data was presented showing totals from 2018 to 2021 in the Little Wild Horse Canyon and Goblin Valley area. In 2021, almost 40,000 people went to Little Wild Horse Canyon.
 - TRAFx data was also presented for Buckhorn Draw, South Temple Wash, and the Wedge Overlook. These numbers can be assessed to show monthly and daily trends in visitor use.
- Tools to Manage Increased Visitor Use:
 - Example: Wedge Overlook: Experiences high visitation, over 277 documented campsites on the rim. In 2020 approximately 50 of these sites were reclaimed. BLM is trying to relocate camping from the rim of the overlook.
 - Advertising recreation opportunities in surrounding areas
 - Limiting camping to improved sites
 - Disperse use by developing trailheads
 - Promoting a responsible education campaign: Leave No Trace, Respect and Protect, etc.
- Virtual maps overview:
 - Price Field Office is working on more. These are georeferenced pdf maps that can be accessed without cell phone signal by enabling GPS on your phone.
 - Dingell Act maps are available
 - Avenza maps tutorial was given

- Trail Studies completed include Non-motorized and wilderness trails
- Grants Projects in Progress include:
 - State of Utah OHV Fiscal Incentive Grant (FIG):
 - Justensen Flat Trailhead- Parking area, fencing, toilet and signage.
 - Tables and benches for Buckhorn Wash, South Temple Wash and Temple Mountain Town Site
 - Seeking a grant to fund an interagency agreement for trails
- Opportunities include: FIG Grants, Land and Water Conservation (LWCF) Grants, State OHV Recreational Trails Program Grants, Utah Office of Outdoor Recreation Grants, Utah Office Outdoor Recreation Restoration Infrastructure Grants, and Swell Utah Trails Grant Program.
- Year to date, in 2021, volunteers have devoted 1033 hours for projects including kiosk installation, motorized route maintenance, wilderness barriers, sign repair and replacement, etc.
 - Groups that volunteered included: Wasatch Mountain Club, Back Country Horsemen, USU Eastern, Castle County OHV Club, Emery Telcom, SUWA, and others.
- NEPA updates included the following planned projects: The Wedge Camping Infrastructure, Justensen Flat Trailhead, SRP Issuance in Wilderness Areas, Sids Mountain Wilderness Barrier in Cane Wash, and Little Wild Horse Campground (conveyance area).
 - We encourage public participation in these planning processes

RAAC Member Discussion:

- Is Cow and Calf Canyon one of the day use only sites? Yes
- Discussing building a cattle fence around the fee site at the Swinging Bridge: The fence at the south end of the Buckhorn Draw? From North Sinbad to the North was taken all away from the cattleman and were told there would be no expansion. The RMP states that developed campsites should be fenced. It will be just the campground portion. Before the fence is completed PFO will check on the status of any agreement that was made with permittees concerning this area. This is the kind of input that BLM needs is to discuss the proposed action. Ranching and cattle is part of the puzzle and input is appreciated on placement of campgrounds, trails, and amenities. Price BLM is aware of some issues with current use in that area and will consider that in the design for the fence if it moves forward.
- At Temple Mountain Town Site 90% of the fence is a mess and has been used for firewood. What is the solution to this? BLM is considering this problem and would use post and cable or boulders instead of wood in the future.
- What are SRPs? These are Special Recreation Permits. They are required for when there is a financial gain from using Public Lands. Most of these fall under commercial enterprise. They do require a NEPA impacts analysis. Are applications increasing? There is a small increase every year.

Public Comment Period

Ray Petersen: I am encouraged, with respect to the issues discussed by the Advisory Council in the last meeting and their effort to put things in motion. Federal agencies can take forever to accomplish things. There are things happening on the ground. In a discussion with Commissioner Wilson right after the Dingell Act was enacted, we discussed how BLM could possibly get everything done. The work can only be accomplished through grants and volunteers. There have been some great conversations about fences and grazing. I look forward to more updates on the SITLA land exchanges and conveyances. Are there documents on the Land Use Plan Amendments yet? I encourage BLM to get those into the hands of the Council.

Judi Brawer: I am the new Wildland Attorney for SUWA in Moab. Can I get copies of the slide show presentations? I think BLM is getting the cart before the horse and dangling carrots by discussing recreation developments without Mexican spotted owl (MSO) surveys and without a Recreation Management Plan. You need to perform MSO surveys before any more development occurs in the critical habitat. The lack of a Tribal member on this Advisory Council is a concern. I am not sure that these meetings are legal. I think the planning efforts may be illegal. Keep in mind the purposes of the Recreation Area. To protect/enhance various resources. Easy to focus on recreation as the purpose of the area. Legislation lists protection of many resources. Recognize that there are many management issues and education is needed.

Wendy Lessig: I represent the Recreational Aviation Foundation and the Utah Back Country Pilots Association. Please consider recreational airstrips and back country pilots in your planning efforts. Temp Mountain Air Strip is not too far away from the campground. When considering OHV use please include aviation in your conversation. (Wendy provided names of many airstrips within the Recreation Area to the Council including Mexican Mountain, Hidden Splendor, Cliff Dweller Flat, Sagebrush Bench, Factory Butte, Nelson Wash and Blackburn Draw.)

Leo Hardy: The committee and the presenters were most informative. The diagrams, maps, and images were very helpful. Thank you.

Kris Caramabelas: I want to make an offer from PLPCO to possibly assist in getting more applicants for a Tribal representative.

Ray Petersen: In the 2008 RMP back country airstrips were addressed. BLM may need to review what current management is on this topic.

RAAC Member Discussion:

- The back country airstrips would be a good topic of conversation for the next RAAC meeting.
- BLM received a very comprehensive list from Back Country Pilots, some are in the Recreation Area, some are not in the Wilderness. They are being looked at as part of the San Rafael Swell Travel Management Plan.
- Can the Council get an update on Cane Wash, Justensen Flat, and Salt Wash at the next meeting? Also an update on the Land Exchanges and where the process is?
- Can we address the comment from on MSO surveys, piecemeal management, and the Tribal Council Member? There was one nomination for the Tribal member and they were not selected. This was decided at the Department of the Interior level and was not a decision made at this level. There was a second call for nominations and there were no applicants. As far as “piecemealing” we cannot stop working everything. With the

passage of Dingell Act there has been a dramatic increase in visitation. We still have to manage for this while waiting on the Plan Amendment.

- In response to Chris Karambelas comment about help with getting applicants, BLM would be okay if they could encourage people to apply.
- Other discussion items suggested were talking about the Wild Horse and Burros and the San Rafael Desert Travel Management Plan. The Advisory Council is for the San Rafael Swell Recreation Area and these meetings need to stay within the Recreation Area discussion.
- The Advisory Council would like to meet in person for the next meetings if possible. Department of the Interior guidelines limit travel, group size, and may not allow for public attendance.
- The RAAC discussion is appreciated but there needs to be a formal recommendation process. The Council's role is to present guidance and direction to BLM.
- Proposed motion discussion: There needs to be a boundary in Cane Wash to stop OHVs from going into the Wilderness. BLM needs to create a permanent structure to protect the Wilderness Area. The boundary of Cane Wash is difficult to put up a boundary or fence. A barrier in the Wilderness Area would work. BLM could put signs up to let people know that the road is closed ahead. There was interest to hear the challenges are to putting up a boundary to the Wilderness. BLM said it has been a challenge for a long time. There is a 180 degree turn out of the wash. That turn is where the route ends. BLM has made several efforts of putting up signs and barriers. The wash is very wide in the area and their efforts get washed away and signs disappear. Does the council want to make a motion on this? A council member thought they should wait until a formal comment period and deal with it at that time.

Meeting was adjourned at 4:42 pm.

Resume August 11th at 8:30 am

August 11th, 2021 Meeting –

Meeting attendees

- San Rafael Swell Recreation Area Advisory Council (RAAC) members: Kent Wilson, Leslie (Les) K. Wilberg, Rodney (Rod) Player, Sue Bellagamba, and Elven (Leon) McElprang.
(Wade Allinson was not in attendance)
BLM employees: Lance Porter, Lisa Everett-Stringer, Chris Conrad, Amber Koski, Stephanie Howard, Dana Truman, Jaydon Mead, Veronica Kratman, Brandi Perry, Molly Hocanson, and Kyle Beagley
- Members of the public:
Jim Jennings, Angela Hawkins, Wendy Lessig, Kristopher Carambelas, Judi Brawer, Ray Petersen, Kelsey Cruikshank, and Leo Hardy,

Welcome and Introductions

- Les Wilberg opened up the meeting by introducing himself and having the other RAAC members do the same.
- Lance Porter discussed the rules of having a quorum and a consensus for formal making recommendations.
- Les went over the agenda items for the day.
- Dana Truman was asked by Lance Porter to give some background into the Mexican spotted owl survey situation in the Recreation Area.
 - BLM has a lot of acreage to prioritize inventory and monitoring of species. There is critical habitat present in Desolation Canyon and surveys have been completed there. However, in the Recreation Area the habitat has been modeled but still needs to be evaluated by performing a habitat assessment. The next steps include the on-going habitat assessments and surveying the critical habitat which is a high priority. Surveys are planned to begin in 2022. It is important for the BLM to support healthy populations of MSO. There is habitat present in both the Moab and Richfield Field Offices and so we need to think about habitat connectivity. Emery County has potential habitat and may be the piece that joins the other habitat in the other two field offices.

Plan Amendment Scoping Overview (see Attachment F)

Presenter: Stephanie Howard, Branch Chief NEPA/GIS, BLM

- What to expect during the Plan Amendment Process and the Scoping Period
 - Review of Planning vs. Implementation
 - RMP sets the rules
 - Goals, objectives, allowable uses, management action
 - Implementation/Activity level plans conform to the rules (set by the RMP)
- Steps to the RMP amendment process include: RMP Review, ACEC Review, Analyze the Management Situation, Draft RMP Amendment, Proposed RMP Amendment, and Decision Record.
 - The Scoping Period is information gathering on resource issues, data to be used, gaps in data that need to be addressed, proposed action and alternatives, and consultation and coordination needs.
 - BLM is waiting for a publication date to be set for the Notice of Intent (NOI) in the Federal Register to hold the 30 Day Scoping period. The NOI announces formally the who, what, why of what BLM is doing. There are 6 plan amendments that are a part of this one NOI package.
 - There are documents that inform scoping which include:
 - The scoping document (maps, the scope, purpose and need, and possible alternatives)
 - Analysis of the Management Situation
 - Existing ACEC reviews (Some of these overlap the Recreation Area. Should they be retained for protections? Are they sufficient?)
 - Price Field Office RMP review
 - Planning Criteria
 - Relevant Studies (like Mexican spotted owl surveys)

- All six Plan Amendments will be released at the same time but schedules are expected to diverge after that.
- Public Scoping ends in a Scoping Report that summarizes the publicly provided information.
- No decisions will be made until the Decision Record is signed.

RAAC member discussion:

- Wilderness and other designations can hamper search and rescue efforts in regards to communications technology. Dingell Act specifies that human health and safety should be taken into account. The need for ROWs is one thing that would be fantastic to get out of the Scoping process. It is exactly what the Scoping process is for.
- How can the Advisory Council give their opinions on the Plan Amendments if the Scoping period does not coincide with meetings? The Advisory Council could send letters either from the whole Council or from separate members. The Council can attend public meetings and provide comments in real time. BLM will take accept the Advisory Council feedback even if Scoping has ended. They can give recommendations and feedback until a Decision is signed.
- There needs to be a discussion of ROWs in the Recreation Area including options and preference, and the land transfers that will occur. The ACEC to protect the viewshed is hindering search and rescue and emergency services.
- Discussion occurred between Council members regarding Wild Horse & Burro populations not being maintained can be harmful to livestock operators.
- Does the Rock Art ACEC include protection from wild animals, horses, and cattle? Not all rock art panels are part of the ACEC. If the public thinks it needs more protection this is something BLM would consider. There does not need to be an ACEC in place for those protections. The RMP can define management goals for the ACEC's but other areas are still protected and preserved. Stemming from discussion in the February RAAC meeting, law enforcement will be installing cameras on key rock art panels to protect them. There is support from a council member to install barrier fences around rock art panels as long as grazing permittees are not responsible for the maintenance of those.
- Possible recommendations from the Council were discussed which included:
 - Consider viewshed preservation
 - ROWs in recreation areas maintenance help from Emery County
 - ACECs in Wilderness –
 - Are they necessary?
 - Are there places outside of an ACEC that we want to nominate?
 - Provide necessary critical habitat for MSO with restrictions on camping near nesting sites
 - Transfer of ROWs – SITLA to Emery County
 - Keep rock art panels protected – permission to haul barrier materials

Land Conveyances and SITLA Parcel Land Exchange Process (see Attachment G)

Presenters: Brandi Perry, Realty Specialist and Veronica Kratman, Realty Specialist

- The Dingell Act Conveyances: Mandated the BLM to convey 5 parcels of land in Emery County
 - Emery City Recreation Area – convey to city of Emery 643 acres

- Huntington Airport – convey to Emery County 362 acres
- Buckhorn Information Center – convey to Emery County 2.5 acres
- Emery County Sheriff’s Office – convey to Emery County 5 acres
- Goblin Valley State Park Expansion – convey to Utah Division of Parks and Recreation 6,341 acres
- Conveyance Process Status:
 - Environmental site assessments: Field work completed, Utah State Office working on ESA (Endangered Species Act) document
 - Mineral potential reports – Completed
 - Cadastral survey final legal descriptions – Field work completed, expected to be finalized Fall 2021
 - Notice of Realty Action (NORA) – Solicitors determined not required because BLM does not have discretion on the conveyances
 - Notification of Tribes – Complete
 - ROW Holder Notifications – Complete
 - Grazing Permittee Notifications – Complete
 - NEPA - Solicitors determined not required because BLM does not have discretion on the conveyances
 - Class III Archeological Surveys – Completed
 - Patent Request Letter – Currently drafting letters to sent to Utah State Office
 - Signing of the Patent – Utah State Office will finalize the patent document
- Exchange of land between SITLA and BLM mandated by the Dingell Act
 - Value for lands identified for exchange must be equal (not acre for acre)
 - Like the conveyances, BLM must follow a process for these exchanges
 - Across Utah:
 - BLM to acquire 121,701.06 acres from SITLA (113,059.82 acres located in the Price Field Office)
 - SITLA to acquire 102,115.02 acres from BLM (24,389.54 acres located in the Price Field Office)
 - Process for Land Exchange:
 - Receive exchange proposal
 - Submit Land Status Record to Cadastral
 - Prepare a Feasibility Report. BLM Headquarters approval required.
 - Required for every land exchange to serve as a communication tool between staff at all levels
 - Documents the analysis of preliminary information and assess entire work effort
 - Not intended to replace resource evaluation and NEPA process
 - The Feasibility Report steps were outlined
 - Publish a Notice of Exchange Proposal in the newspaper, notify ROW holders, permittees, etc.
 - Certificate of Inspection and Possession (CIP)
 - Any land coming into BLM management must undergo CIP Process
 - PFO Realty Staff to review both authorized and unauthorized uses of the land

- PFO staff “all hands-on deck” to physically inspect each property by hiking, driving, and helicopter.
 - Appraise lands to determine value
 - NEPA and other ground surveys
 - Submit Notice of Decision for HQ approval
 - Publish Notice of Decision in the newspaper with a 45 day protest period
 - Respond to protests and simultaneous 60-day Governor notification
 - Equalization of value
 - Second CIP – Completed within 60 days prior to final transaction
 - Prepare final title evidence
 - Transfer title
 - Issue Final Title Opinion
 - Issue records notation

RAAC Member Discussion:

- For the lands that SITLA acquires, can the Advisory Council look at them & see if they are appropriate for SITLA to have? Emery County was given the opportunity to request certain properties. They had no input on the lands outside of Emery County. You could express thoughts or concerns with SITLA.

Public Comment Period

- Ray Petersen: I am very encouraged by the presentations and commend BLM on them. The Scoping process is very important. The Council needs to be prepared to bring up issues. Thank you.
- Judi Braver: I learned a lot throughout the whole meeting. The presentations were great and thorough. The explanation given for Mexican spotted owl was great. Thank you. Any clue when the Scoping process will begin for the Plan Amendments?
- Leo Hardy: In regards to communication, why not implement & distribute satellite phones? There would no need for more cell phone towers, just a thought. For the public maybe not, but possibly for Emergency Medical Services. Cell towers have construction and maintenance involved. Satellite phones are expensive but are better than towers.

Discussion/consideration of Public Comments

- In response to Judi Braver question on Scoping: It is difficult to say exactly when. The package for the Notice of Intent is at Headquarters now. It will likely be September or possibly October before that will be published.
- There was a discussion on the need to keep health and human safety in mind while reviewing the Plan amendments. There are protections in place for the viewshed but there is a need for communications facilities that may need to take precedence over that.
- In response to Leo Hardy comment: The satellite phone idea is very valid. The Sheriff’s Office did have some. They were costly and they were not sure how to distribute. This could be accomplished by grants possibly.

Advisory Council Recommendations

- Kent Wilson motioned for a conversation on back airstrips to be added to the agenda for the next meeting. Rod Player seconded the motion. All were in favor.
- Sue Bellagamba recommends that the BLM look at innovative grazing practices such as grassbanking in the management plan. Kent Wilson seconded. All council members were in favor.
- Kent Wilson recommends that the BLM makes maximum AML a priority when starting the planning process for getting money for horse and burro gathers. Leon McElprang seconded. All Council members were in favor.
- Sue Bellagamba recommends that BLM look at appropriate place for communications facilities and consider viewshed protection. This motion was seconded by Kent Wilson. (This motion is reiterated in the recommendation below.)
- Sue Bellagamba recommends that BLM Land Use Plan Scoping process consider visual classes, health and human safety and the beauty of recreation. Kent Wilson seconded. All of the council was in favor.

Advisory Council Discussion

- There was a discussion on the Agenda items for the next RAAC meeting. Proposed items:
 - Grassbanks, in times of emergency to help the agricultural industry
 - Dispersed camping: success – in heavy use or possibly change model, what is the result you want?
 - ACECs – Process (thorough or hurried, may not qualify, a possible re-inventory)
 - Back country airstrips (this was an official recommendation)
 - Land Use Planning process specifics
 - Scoping report for Plan Amendments
 - Right-of Ways in the Recreation Area
 - Update on recommended items
 - Viewshed (what is preferred method to accomplish)
- The possible dates for the next meeting were discussed. The dates of the 16th and 17th of February were tentatively chosen.
- Discussion of possible topics for next meeting:

Chairperson adjourned meeting at 11:59 am

Approved:

Leslie K. Wilberg

northeasterly 39.27 feet along said curve through a central angle of 90°00'00";

(13) North 89°18'00" East, a distance of 6.00 feet;

(14) North 00°42'00" West, a distance of 50.00 feet;

(15) South 89°18'00" West, a distance of 13.34 feet;

(16) along a tangent curve concave to the northeast, having a radius of 25.00 feet, northwesterly 38.46 feet along said curve through a central angle of 88°08'33";

(17) South 87°26'33" West, a distance of 6.00 feet;

(18) North 02°33'27" West, a distance of 51.58 feet;

(19) North 00°42'00" West, a distance of 563.84 feet;

(20) North 89°18'00" East, a distance of 6.00 feet;

(21) from a radial line which bears South 89°18'00" West, along a non-tangent curve concave to the east, having a radius of 25.00 feet, northerly 6.76 feet along said curve through a central angle of 15°30'00" to the northwest corner of said Lot A and a point on the common line between said Lot A and Lot G of said Map;

Thence leaving said northeasterly line, along said common line, the following four (4) arcs, courses and distances:

(1) North 89°12'25" East, a distance of 86.70 feet;

(2) along a tangent curve concave to the southwest, having a radius of 330.00 feet, southeasterly 314.08 feet along said curve through a central angle of 54°31'51";

(3) South 36°15'44" East, a distance of 86.17 feet;

(4) along a tangent curve concave to the north, having a radius of 25.00 feet, easterly 37.96 feet along said curve through a central angle of 87°00'21";

Thence leaving said common line, entering and passing through said Lot A, the following eight (8) arcs, courses and distances:

(1) South 32°02'06" East, a distance of 66.91 feet;

(2) from a radial line which bears North 33°08'11" West, along a non-tangent curve concave to the south, having a radius of 978.00 feet, easterly 417.51 feet along said curve through a central angle of 24°27'35";

(3) North 81°19'25" East, a distance of 19.83 feet;

(4) along a tangent curve concave to the south, having a radius of 879.00 feet, easterly 342.73 feet along said curve through a central angle of 22°20'25";

(5) South 76°20'11" East, a distance of 12.19 feet;

(6) along a tangent curve concave to the southwest, having a radius of 342.00

feet, southeasterly 157.69 feet along said curve through a central angle of 26°25'03";

(7) along a compound curve concave to the southwest, having a radius of 342.00 feet, southeasterly 71.04 feet along said curve through a central angle of 11°54'08";

(8) South 38°01'00" East, a distance of 346.19 feet to the point of beginning.

The Basis of Bearings for this description is the California State Plane Coordinate System, Zone 2, NAD 83, Epoch Date 1997.30 as measured between NGS Station "Eschinger", 1st Order and NGS Station "Keller", 1st Order. Said Bearing is North 20°56'36" West. Distances shown are ground based.

APN: 134-1010-001-0000 (Portion)

Authority: This notice is published in the exercise of authority delegated by the Secretary of the Interior to the Assistant Secretary—Indian Affairs by 209 Departmental Manual 8.1, and is published to comply with the requirements of 25 CFR 151.12(c)(2)(ii) that notice of the decision to acquire land in trust be promptly provided in the **Federal Register**.

Bryan Newland,

Principal Deputy Assistant Secretary—Indian Affairs.

[FR Doc. 2021-13199 Filed 6-22-21; 8:45 am]

BILLING CODE 4337-15-P

DEPARTMENT OF THE INTERIOR

Bureau of Land Management

[212 LLUTG02000 L12200000.PM0000]

Notice of Public Meeting, San Rafael Swell Recreation Area Advisory Council, Utah

AGENCY: Bureau of Land Management, Interior.

ACTION: Notice of public meeting.

SUMMARY: In accordance with the Federal Land Policy and Management Act, the Federal Advisory Committee Act, and the Federal Lands Recreation Enhancement Act, the U.S. Department of the Interior, Bureau of Land Management's (BLM) San Rafael Swell Recreation Area Advisory Council (Council) will meet as indicated below.

DATES: The Council is scheduled to meet on August 10, 2021, from 12:30 p.m. to 5 p.m. and on August 11, 2021, from 7:30 a.m. to 2 p.m. A virtual meeting platform and/or teleconference may substitute if public safety concerns remain to prevent the spread of COVID-19.

ADDRESSES: The meeting will be held at the Emery County Courthouse, 75 East

Main Street, Castle Dale, Utah 84513. Written comments to address the Council may be sent to Lance Porter, Green River District Manager, 170 South 500 West, Vernal, Utah 84078, or via email with the subject line "San Rafael Swell Advisory Council meeting" to utprmail@blm.gov.

FOR FURTHER INFORMATION CONTACT:

Lance Porter, Green River District Manager, 170 South 500 West, Vernal, Utah 84078; phone (435) 781-4400; or email l50porte@blm.gov. Persons who use a telecommunications device for the deaf may call the Federal Relay Service (FRS) at 1-800-877-8339 to leave a message or question for the above individual. The FRS is available 24 hours a day, seven days a week. Replies are provided during normal business hours.

SUPPLEMENTARY INFORMATION: The John D. Dingell, Jr. Conservation, Management, and Recreation Act (Pub. L. 116-9) established the Council to provide advice and information for the BLM in planning and managing the San Rafael Swell Recreation Area. The seven-member council represents a wide range of interests including local government, recreational users, grazing allotment permittees, conservation organizations, expertise in historical uses of the recreation area, and Tribes. More information can be found at: <https://www.blm.gov/get-involved/resource-advisory-council/near-you/utah/San-Rafael-Swell-RAC>. Agenda topics for August 10 include an overview of special status species, visitor use patterns, campground implementation, and virtual maps. Agenda topics for August 11 include a short field trip to visit two well-known recreation sites (if COVID-19 public safety concerns do not apply), and a land use planning update. The final agenda and meeting information will be posted on the Council's web page 30 days before the meeting.

The meeting is open to the public; however, transportation, lodging, and meals are the responsibility of the participating individuals. A public comment period will be offered each day of the scheduled meeting. Depending on the number of people wishing to comment and the time available, the time for individual comments may be limited. People wishing to speak will be asked to sign in before the scheduled oral comment time for planning and record keeping purposes. Written comments may also be sent to the Green River District Manager at the address listed in the **ADDRESSES** section of this notice. All

comments received will be provided to the Council.

Public Disclosure of Comments: Before including your address, phone number, email address, or other personal identifying information in your comment, you should be aware that your entire comment—including your personal identifying information—may be made publicly available at any time. While you can ask us in your comment to withhold your personal identifying information from public review, we cannot guarantee that we will be able to do so.

Detailed Council meeting minutes will be maintained in the Green River District Office and will be available for public inspection and reproduction during regular business hours within 90 days following each meeting. Minutes will also be posted to the Council web page.

Authority: 43 CFR 1784.4–2.

Gregory Sheehan,
State Director.

[FR Doc. 2021–13112 Filed 6–22–21; 8:45 am]

BILLING CODE 4310–DQ–P

JOINT BOARD FOR THE ENROLLMENT OF ACTUARIES

Meeting of the Advisory Committee; Meeting

AGENCY: Joint Board for the Enrollment of Actuaries.

ACTION: Notice of federal advisory committee meeting.

SUMMARY: The Joint Board for the Enrollment of Actuaries gives notice of a teleconference meeting of the Advisory Committee on Actuarial Examinations (a portion of which will be open to the public) on July 8 and 9, 2021.

DATES: Thursday, July 8, 2021, from 9:00 a.m. to 5:00 p.m. (EDT), and Friday, July 9, 2021, from 8:30 a.m. to 5:00 p.m. (EDT).

ADDRESSES: The meeting will be held by teleconference.

FOR FURTHER INFORMATION CONTACT: Ms. Elizabeth Van Osten, Designated Federal Officer, Advisory Committee on Actuarial Examinations, at (202) 317–3648 or *Elizabeth.j.vanosten@irs.gov*.

SUPPLEMENTARY INFORMATION: Notice is hereby given that the Advisory Committee on Actuarial Examinations will meet by teleconference on Thursday, July 8, 2021, from 9:00 a.m. to 5:00 p.m. (EDT), and Friday, July 9, 2021, from 8:30 a.m. to 5:00 p.m. (EDT).

The purpose of the meeting is to discuss topics and questions that may

be recommended for inclusion on future Joint Board examinations in actuarial mathematics and methodology referred to in 29 U.S.C. 1242(a)(1)(B) and to review the May 2021 Pension (EA–2L) and Basic (EA–1) Examinations in order to make recommendations relative thereto, including the minimum acceptable pass scores. Topics for inclusion on the syllabus for the Joint Board’s examination program for the November 2021 Pension (EA–2F) Examination will be discussed.

A determination has been made as required by section 10(d) of the Federal Advisory Committee Act, 5 U.S.C. App., that the portions of the meeting dealing with the discussion of questions that may appear on the Joint Board’s examinations and the review of the May 2021 EA–2L and EA–1 Examinations fall within the exceptions to the open meeting requirement set forth in 5 U.S.C. 552b(c)(9)(B), and that the public interest requires that such portions be closed to public participation.

The portion of the meeting dealing with the discussion of the other topics will commence at 1:00 p.m. (EDT) on July 8, 2021, and will continue for as long as necessary to complete the discussion, but not beyond 3:00 p.m. (EDT). Time permitting, after the close of this discussion by Committee members, interested persons may make statements germane to this subject. Persons wishing to make oral statements should contact the Designated Federal Officer at *NHQJBEA@IRS.GOV* and include the written text or outline of comments they propose to make orally. Such comments will be limited to 10 minutes in length. Persons who wish to attend the public session should contact the Designated Federal Officer at *NHQJBEA@IRS.GOV* to obtain teleconference access instructions. Notifications of intent to make an oral statement or to attend the meeting must be sent electronically to the Designated Federal Officer by no later than July 1, 2021. In addition, any interested person may file a written statement for consideration by the Joint Board and the Advisory Committee by sending it to *NQJBEA@IRS.GOV*.

Dated: June 17, 2021.

Thomas V. Curtin, Jr.,
Executive Director, Joint Board for the Enrollment of Actuaries.

[FR Doc. 2021–13174 Filed 6–22–21; 8:45 am]

BILLING CODE 4830–01–P

DEPARTMENT OF JUSTICE

Drug Enforcement Administration

[Docket No. DEA–856]

Bulk Manufacturer of Controlled Substances Application: Purisys, LLC.

AGENCY: Drug Enforcement Administration, Justice.

ACTION: Notice of application.

SUMMARY: Purisys, LLC. has applied to be registered as a bulk manufacturer of basic class(es) of controlled substance(s). Refer to Supplemental Information listed below for further drug information.

DATES: Registered bulk manufacturers of the affected basic class(es), and applicants therefore, may file written comments on or objections to the issuance of the proposed registration on or before August 23, 2021. Such persons may also file a written request for a hearing on the application on or before August 23, 2021.

ADDRESSES: Written comments should be sent to: Drug Enforcement Administration, Attention: DEA Federal Register Representative/DPW, 8701 Morrisette Drive, Springfield, Virginia 22152.

SUPPLEMENTARY INFORMATION: In accordance with 21 CFR 1301.33(a), this is notice that on March, 12, 2021, Purisys, LLC., 1550 Olympic Drive, Athens, Georgia 30601–1602, applied to be registered as a bulk manufacturer of the following basic class(es) of controlled substance(s):

Controlled substance	Drug code	Schedule
3,4-Methylenedioxyamphetamine.	7400	I
3,4-Methylenedioxymethamphetamine.	7404	I
3,4-Methylenedioxy-N-ethylamphetamine.	7405	I
Psilocybin	7437	I
Psilocyn	7438	I

The company plans to bulk manufacture the listed controlled substances for the internal use intermediates or for sale to its customers. The company plans to manufacture the above-listed controlled substances as clinical trial and starting materials to make compounds for distribution to its customers. No other

BLM UTAH CURRENT OPERATING STATUS

Click here to keep up to date on changes to facilities and services in Utah in response to Coronavirus (COVID-19).



U.S. DEPARTMENT OF THE INTERIOR
**BUREAU OF LAND
MANAGEMENT**

SAN RAFAEL SWELL RECREATION AREA ADVISORY COUNCIL TO HOLD ONLINE MEETING

PRICE, Utah – The Bureau of Land Management will hold an online meeting of the San Rafael Swell Recreation Area Advisory Council (Council) on Aug. 10-11, 2021. The meeting will take place from 12:30 p.m. to 5 p.m. on Aug. 10 and from 9 a.m. to 12 p.m. on August 11.

The John D. Dingell, Jr. Conservation, Management, and Recreation Act of 2019 (Public Law 116-9) established the Council to provide advice and information for the BLM to consider in planning for and managing the San Rafael Swell Recreation Area. The seven-member Council represents a wide range of interests including local government, recreational users, grazing allotment permittees, conservation organizations, expertise in historical uses of the recreation area, and Tribes. Advisory councils provide advice and recommendations to the Secretary of the Interior on public land resource and management issues.

“The BLM looks forward to continuing our coordination with the advisory council” **said Lance Porter, Green River District Manager.** “We have already learned a great deal about the recreation area by conducting resource inventories and speaking with our council members.”

Agenda topics will include an overview of special status species, visitor use patterns, campground implementation, virtual maps, land use plan amendments, land conveyances, and the Utah School and Institutional Trust Lands Administration parcel land exchange process. The agenda and meeting registration information are available on the Council webpage at <https://www.blm.gov/get-involved/resource-advisory-council/near-you/utah/San-Rafael-Swell-RAC>.

The public is welcome to attend the meeting and will be given an opportunity to address the Council each day. The scheduled times for the public to address the Council are Aug. 10 from 3:30 p.m. to 4 p.m., and Aug. 11 from 11 a.m. to 11:30 a.m. Depending on the number of people wishing to comment, the amount of time for an individual’s oral comments may be limited. Written statements to address the Council may be sent to the BLM Green River District, Attn: Lance Porter, 170 South 500 West, Vernal, Utah 84078 or via email with the subject line “San Rafael Swell Advisory Council meeting” to utprmail@blm.gov.

More information about the area can be found at <https://www.blm.gov/visit/search-details/2187/2>.

For additional information about the upcoming meeting, please contact Lance Porter at (435) 781-4400 or l50porte@blm.gov. Persons who use a telecommunications device for the deaf may call the Federal Relay Service (FRS) at 1-800-877-8339 to leave a message or question for the above individual. The FRS is available 24 hours a day, seven days a week. Replies are provided during normal business hours.

This year, we invite everyone to reimagine your public lands as we celebrate 75 years of the BLM’s stewardship and service to the American people. The BLM manages approximately 245 million acres of public land located primarily in 12 Western states, including Alaska. The BLM also administers 700 million acres of sub-surface mineral estate throughout the nation. The agency’s mission is to sustain the health, diversity, and productivity of America’s public lands for the use and enjoyment of present and future generations.

MORE PRESS RELEASES

RELEASE DATE

Friday, July 9, 2021

ORGANIZATION

Bureau of Land Management

OFFICE

Green River District

CONTACTS

Name: Amber KOSKI

Email: akoski@blm.gov

Phone: [\(435\) 219-4523](tel:(435)219-4523)

**San Rafael Swell Recreation Area Advisory Council
Online Meeting Agenda
August 10-11, 2021**

August 10, 2021

TIME	TOPIC	PRESENTER
Noon	Public sign in and member arrival	
12:30 p.m.	Welcome and introductions	Lance Porter, Green River District Manager and Les Wilberg, San Rafael Swell Recreation Area Advisor Council Chairperson
12:40 p.m.	Agenda review and meeting room logistics Purpose: Review agenda, adjust if necessary	Les Wilberg
12:45 p.m.	Overview of special status species found within the Recreation Area Purpose: Explanation of the current management situation	Kegen Benson, Price Field Office, Wildlife Biologist and Dana Truman, Price Field Office, Assistant Field Manager
1:30 p.m.	Break and reminder to public to sign in if they wish to address the Advisory Council	Les Wilberg
1:45 p.m.	Discussion about known visitor use patterns within the Recreation Area, campground implementation update and overview of virtual maps Purpose: To explain what is occurring on the ground, discuss what tools are available to the BLM to help manage visitor use and provide an update to the Advisory Council	Myron Jeffs, Price Field Office, Outdoor Recreation Planner, Jaydon Mead, Price Field Office, Outdoor Recreation Planner and Blake Baker, Price Field Office, Outdoor Recreation Planner
3:15 p.m.	Break to prepare for public comment period	Les Wilberg
3:30 p.m.	Public comment period	Members of the public, sign in will be required for oral comments
4:00 p.m.	Discuss public comments and make recommendations Purpose: To allow the Advisory Council to consider public input before making recommendations	Advisory Council
5 p.m.	Adjourn	Les Wilberg

August 11, 2021

9:00 a.m.	Brief overview of yesterday's activities and agenda for today Purpose: Opportunity to answer questions, offer observations on yesterday's meeting, and affirm agenda and goals for today	Lance Porter, Les Wilberg and Council members
9:30 a.m.	Update on land use plan amendments Purpose: To provide an overview of the scoping process and discuss next steps for the land use plan amendment	Stephanie Howard, Green River District, Branch Chief for Planning and GIS
10:00 a.m.	Informational overview & update on <ul style="list-style-type: none">• Land Conveyances• SITLA parcel Land Exchange Process Purpose: To provide an overview and update of these Realty actions	Brandi Massey, Vernal Field Office, Realty Specialist Veronica Kratman, Price Field Office, Realty Specialist
10:45 a.m.	Break	
11:00 a.m.	Public comment period	Members of the public, sign in will be required for oral comments
11:30 a.m.	Discuss public comments and determine recommendations Purpose: For the Advisory Council to take public comments under consideration, and formalize recommendations to the BLM	Advisory Council
11:45 a.m.	Review Dates & topics for future meeting	
12:00	Adjourn	

U.S. Department of the Interior
Bureau of Land Management

Special Status Species

San Rafael Swell Recreation Area August 10, 2021

Special status species: collectively, federally listed or proposed and Bureau sensitive species, which include both Federal candidate species and delisted species

Bureau sensitive species—species that require special management consideration to avoid potential future listing under the ESA

1

U.S. Department of the Interior
Bureau of Land Management

Special Status Species

SAN RAFAEL SWELL RECREATION AREA

Laws, Regulations, and Policy

The Federal Land Policy and Management Act	Special Status Species Management, BLM 6840 Manual
Endangered Species Act	Price Field Office Resource Management Plan
Migratory Bird Treaty Act	Secretarial Order 3362

2

U.S. Department of the Interior
Bureau of Land Management

Special Status Species

SAN RAFAEL SWELL RECREATION AREA

Endangered Species Act, 1973

- Protect and recover imperiled species and the ecosystems upon which they depend.
- Administered by the USFWS and the Commerce Department's National Marine Fisheries Service (NMFS).
- Species may be listed as either endangered or threatened.
 - Endangered – in danger of extinction throughout all or a significant portion of its range.
 - Threatened- is likely to become endangered within the foreseeable future.

3

U.S. Department of the Interior
Bureau of Land Management

Special Status Species

SAN RAFAEL SWELL RECREATION AREA

Federally Listed Species in the San Rafael Recreation Area

Plants	Animals
Last Chance townsendia	Mexican spotted owl
Wright fishhook cactus	Southwestern Willow Flycatcher
San Rafael cactus	Yellow-billed cuckoo
Winkler cactus	
Barneby reed-mustard	
Jones cycladenia	

4

U.S. Department of the Interior
Bureau of Land Management

Special Status Species

SAN RAFAEL SWELL RECREATION AREA

Photo credits: USEWS and BLM

5

U.S. Department of the Interior
Bureau of Land Management

Special Status Species

SAN RAFAEL SWELL RECREATION AREA

Special Status Species Management, Manual

The objectives of the BLM special status species policy are:

- To conserve and/or recover ESA-listed species and the ecosystems on which they depend so that ESA protections are no longer needed for these species.
- To initiate proactive conservation measures that reduce or eliminate threats to Bureau sensitive species to minimize the likelihood of and need for listing of these species under the ESA.

6

U.S. Department of the Interior
Bureau of Land Management

Special Status Species

SAN RAFAEL SWELL RECREATION AREA

BLM Special Status Species in the San Rafael Swell Recreation Area

Plants	Animals	Fish
Mussentuchit gilia	Burrowing Owl	Bluehead sucker
Bolander's camissonia	Ferruginous Hawk	Flannelmouth sucker
Maguire Daisy	Golden Eagle	Roundtail chub
Flat Top buckwheat	Great Plains toad	
Utah Spurge	Monarch butterfly	
Entrada rushpink	Western bumble bee	
Thompson's talinum	Fringed myotis	
Jones Indigo Bush	Townsend's Big-eared bat	
Psoralea Globemallow	Kit Fox	
Trotter's Oreoxis	White-tailed prairie dog	

7

U.S. Department of the Interior
Bureau of Land Management

Special Status Species

SAN RAFAEL SWELL RECREATION AREA

Photo credits: BLM, USES, USEWS, and LUDWIG

8

U.S. Department of the Interior
Bureau of Land Management

Special Status Species

SAN RAFAEL SWELL RECREATION AREA

GOALS (Price Resource Management Plan)

- Maintain, protect, and enhance habitats and actively promote recovery, maintenance, protection, and enhancement of populations and habitats of BLM, non-listed, special status plant and animal species to ensure that actions authorized, funded, or carried out do not contribute to the need for these species to be listed as T&E under the Endangered Species Act (ESA).
- Assist in managing, conserving, and recovering listed threatened and endangered plant and animal species found within the Price planning area, where appropriate.

9

U.S. Department of the Interior
Bureau of Land Management

Special Status Species

SAN RAFAEL SWELL RECREATION AREA

Objectives (Price Resource Management Plan)

- Recognize and support the role of the USFWS in managing federally listed T&E plant and animal species.
- In consultation with USFWS and UDWR, apply species-specific protective stipulations on federal actions to avoid or minimize adverse effects on federally listed, proposed, or candidate species or suitable habitat for the same species.
- Maintain adequate baseline information regarding the extent of special status species to make informed decisions, evaluate the effectiveness of management actions, and assess progress toward recovery. Implement species-specific conservation measures to avoid or mitigate adverse impacts on known populations and their habitats of BLM special status plant and animal species on BLM-administered lands.

10

U.S. Department of the Interior
Bureau of Land Management

THE WEDGE

11

U.S. Department of the Interior
Bureau of Land Management

Habitat of Federally Listed Species around the Wedge and the Goodwater Rim

12

U.S. Department of the Interior
Bureau of Land Management

Special Status Species

SAN RAFAEL SWELL RECREATION AREA

13

U.S. Department of the Interior
Bureau of Land Management

San Rafael Cactus

Pediocactus Despainii

- Listed as endangered in 1987
- Exclusively in Emery County
- 20 populations
- 85% of populations occur on BLM managed lands
- Threats – OHV, development, recreation, grazing
- Future – Continue to implement long-term monitoring
- Currently monitoring is focused on the Wedge.

14

U.S. Department of the Interior
Bureau of Land Management

San Rafael Cactus

Pediocactus Despainii

15

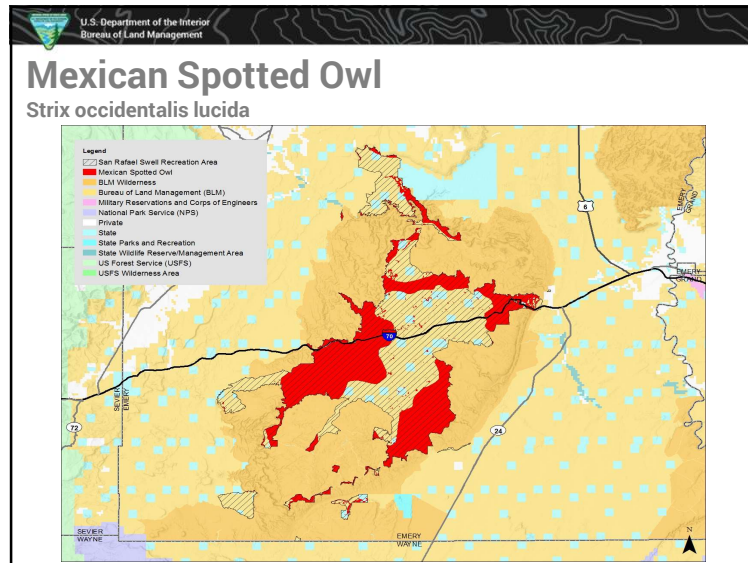
U.S. Department of the Interior
Bureau of Land Management

Mexican Spotted Owl

Strix occidentalis lucida

- Listed as endangered in 1993
- Threats – Recreation and vehicle use or disturbance, loss of foraging and nesting habitat.
- Inventory – Minimal surveys on the Price BLM lands, several surveys on Moab managed lands. Currently in contracting process for surveys.
- Future – Establish USFWS protocol surveys

16



17

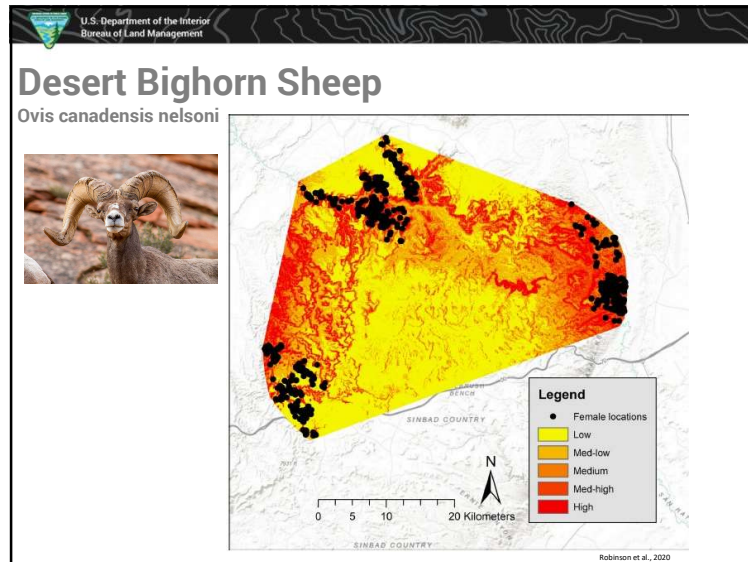
Desert Bighorn Sheep
Ovis canadensis nelsoni

Issues and Concerns:

- Development
- Habitat fragmentation, degradation, and loss
- Disease
- Predation
- Competition

- RMP Stipulation for bighorn sheep: Spring/lambing range would be closed seasonally, April 15 to June 15

18



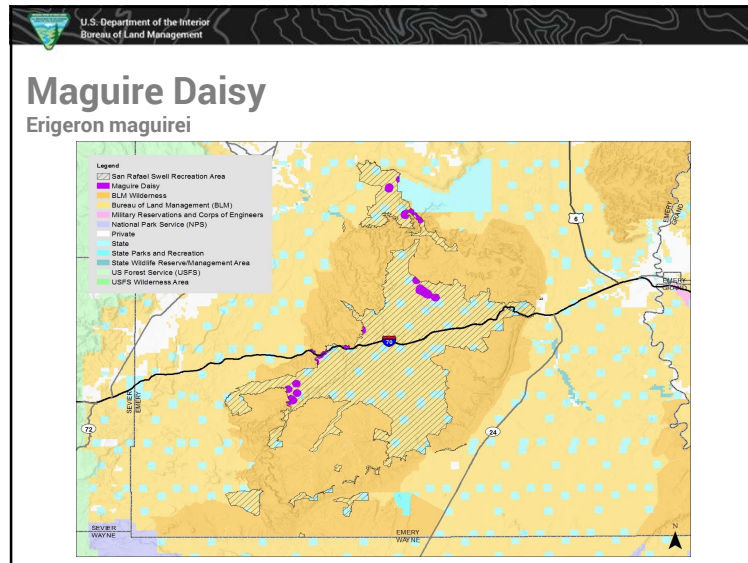
19

Special Status Species
SAN RAFAEL SWELL RECREATION AREA

Other species

- Maguire Daisy
- Roundtail Chub

20



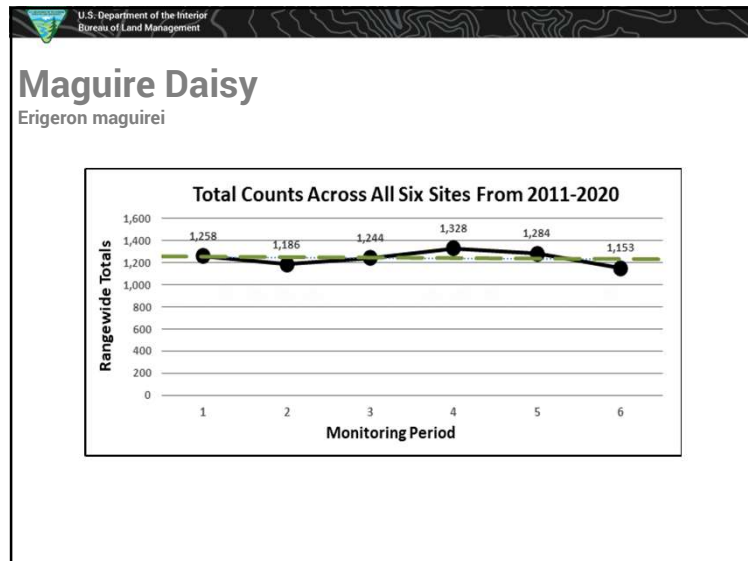
21

Maguire Daisy

Erigeron maguirei

- Threats: mineral exploration, development, off-road vehicles
- Delisted in 2011
- Over 163,000 plants in 10 different populations
- Post Delisting monitoring for 10 years

22




23

Roundtail Chub

Gila robusta

- The Roundtail Chub is a Special Status Species
- Managed under a conservation agreement
- Found in the San Rafael River
- Threats
 - Keeping Adequate flows
 - Maintaining water quality
 - Habitat loss, degradation, and fragmentation
- The Lower San Rafael River restoration project funded through the Watershed Restoration Initiative (WRI) was completed through a partnership with USU and UDWR.

24



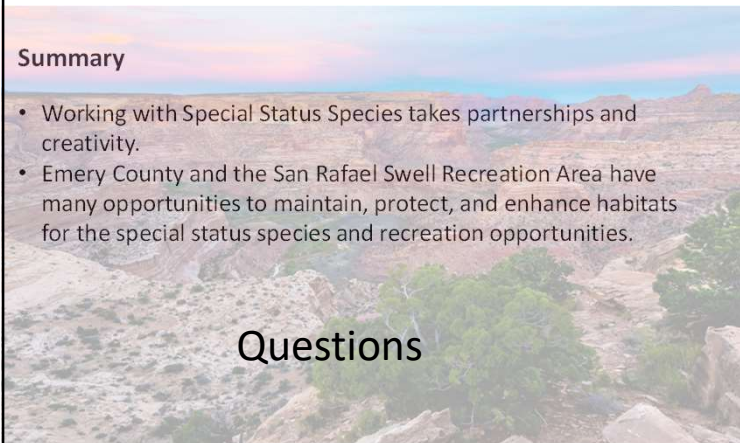
Special Status Species

SAN RAFAEL SWELL RECREATION AREA

Summary

- Working with Special Status Species takes partnerships and creativity.
- Emery County and the San Rafael Swell Recreation Area have many opportunities to maintain, protect, and enhance habitats for the special status species and recreation opportunities.

Questions



25

U.S. Department of the Interior
Bureau of Land Management

Recreation Update

San Rafael Swell Recreation Area



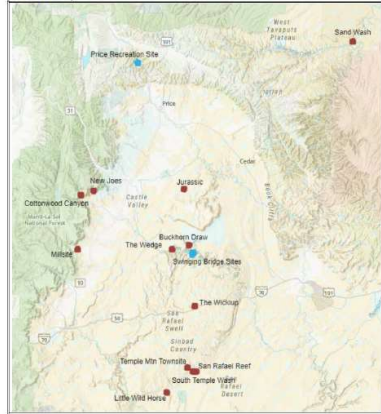
Presented By: Outdoor Recreation Planners
Jaydon Mead, Blake Baker, and Myron Jeffs
August 10, 2021

1

U.S. Department of the Interior
Bureau of Land Management

Campground Business Plan, Quick Review:

Appendix B: Map of Campground Locations
BLM Price Field Office
Site and Area Map



What was approved?

- \$15 a night for all individual sites.
- \$75 a night for all group sites.

Fees have been raised at existing fee sites including the Swinging Bridge Campgrounds.

12 new campgrounds have been approved for future fee collection; however the agency is still working on getting the Federal Register Notice published. We cannot collect new fees until 60 days after it is published.

Currently preparing several campgrounds.

2

U.S. Department of the Interior
Bureau of Land Management

Buckhorn Draw Improvements

Installed 2 new bathrooms in May 2021




3

U.S. Department of the Interior
Bureau of Land Management

Buckhorn Draw Improvements

35 concrete picnic tables delivered and installed in July 2021.

Nearly every campsite currently has a picnic table and fire ring.

4 Large Group Sites, 28 Individual Sites, 8 Day Use only locations.





4

U.S. Department of the Interior
Bureau of Land Management

Buckhorn Draw Improvements

Still Need:
Signs and fee tubes installed, and access roads improved.

5

U.S. Department of the Interior
Bureau of Land Management

Swinging Bridge Improvements

Increased the size of the corrals at the Equestrian Campground.
Replaced damaged fence with large rocks.

6

U.S. Department of the Interior
Bureau of Land Management

Swinging Bridge Improvements:

We have purchased, and plan to install shade structures in the Swinging Bridge South Campground.

Plan to provide more recreation/trail information about nearby opportunities

Still need to build a cattle fence around this fee site.

7

U.S. Department of the Interior
Bureau of Land Management

Temple Mountain Town Site and South Temple Wash Improvements:

22 Picnic tables are being delivered on August 13th!

Still Need:

- 16x16 Shade Structures Installed at South Temple Wash
- Improved site delineation
- Provide more recreation/trail information about nearby opportunities

8

U.S. Department of the Interior
Bureau of Land Management

Little Wild Horse Campground:

Partnership with Goblin Valley

- Contracted Special Status Plant surveys have been completed
- Formal Consultation with USFWS is now proceeding.
- Up to 65 total individual camp sites
- Up to 9 open air design vault toilets could be installed
- Amenities would include a driveway, fire ring, and picnic table

Legend

- Little Wild Horse Campground
- Congressionally Designated Wilderness
- BLM Wilderness Area
- Bureau of Land Management (BLM)
- Private
- State Parks and Recreation
- RMP-Approved County Maintained Roads
- RMP-Approved Limited Maintenance Roads

9

U.S. Department of the Interior
Bureau of Land Management

Wedge Area Improvements:

- We developed 3 trailheads, including bathroom facilities, along the Goodwater Rim Trail.
- Installed several new signs and have continued placing large boulders to keep people from driving off road.

Currently in a planning phase for campground development, while keeping ADA accessibility in mind.

10

U.S. Department of the Interior
Bureau of Land Management

Swinging Bridge Campground Visitor Use:

2018

Site	Total RUPs	Total Days	Total Users
San Rafael North CG	229	1355	673
San Rafael South CG	152	667	413

2021 data as of 6/27/2021

Site	Total RUPs	Total Days	Total Users
San Rafael North RUPs-226 Days-1432 Users-833			
San Rafael South RUPs-171 Days-833 Users-556			

Projection for end of 2021?
With a busy fall season expected, we believe numbers will be similar to 2020. Developments in Buckhorn may draw people away from these fee sites.

2019

Site	Total RUPs	Total Days	Total Users
San Rafael North CG	350	1863	918
San Rafael South CG	224	795	473

2020

Site	Total RUPs	Total User Days	Total Users
San Rafael North CG	360	2190	1358
San Rafael South CG	260	1259	759

These numbers only represent those that have paid at the sites.

11

U.S. Department of the Interior
Bureau of Land Management

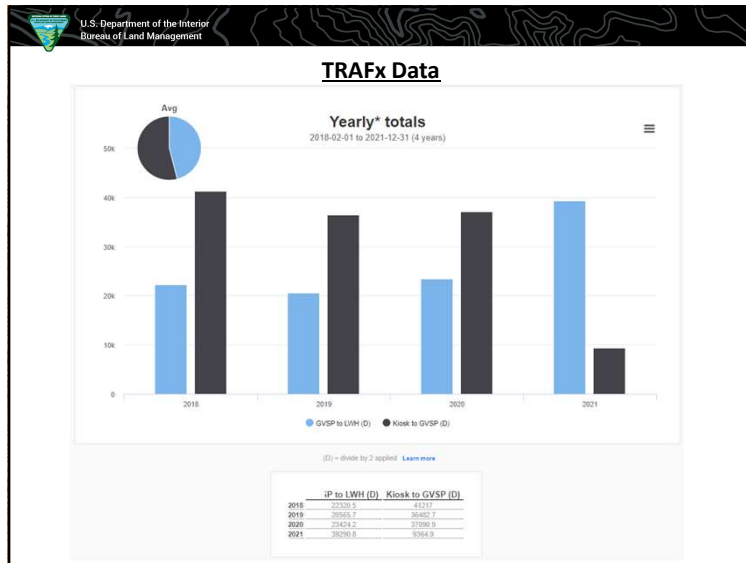
Other Visitor Use Updates:

Installed more than 20 new TRAFx counters in 2021

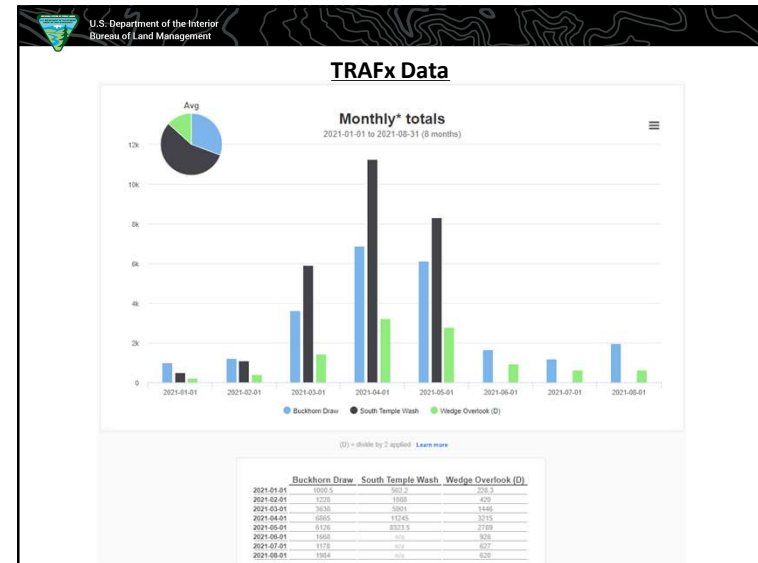
This will give us better visitor use trend data in the future, and more accurate numbers now.

Plans to work with Emery County Trails Committee to install and maintain more.

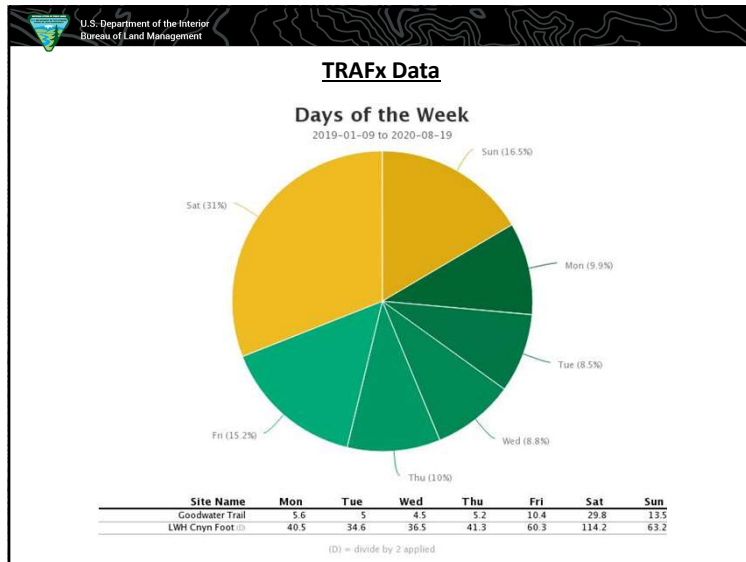
12



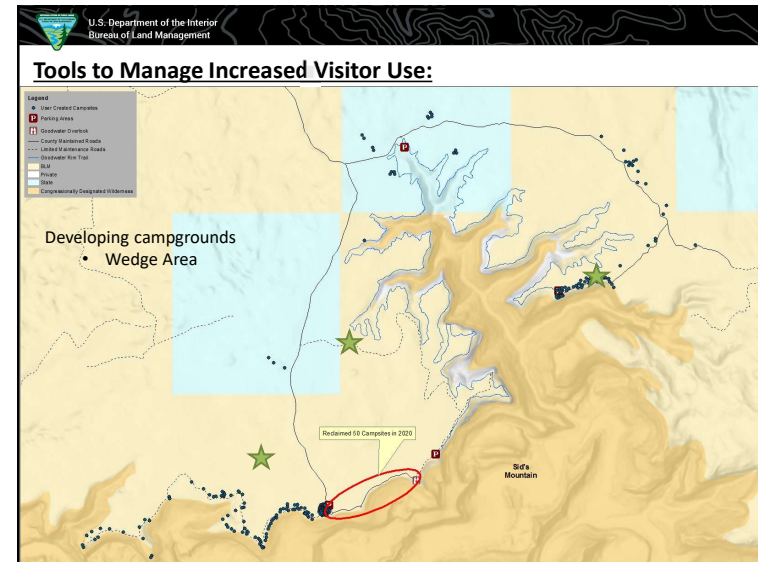
13



14



15




16

U.S. Department of the Interior
Bureau of Land Management

Tools to Manage Increased Visitor Use:

- Advertise recreation opportunities in surrounding areas
 - Buckhorn Wash
 - Temple Mountain
 - Jurassic National Monument
- Disperse use by developing trailheads
- Develop trailheads for opportunities identified in the Non-motorized Trail Inventory



17

U.S. Department of the Interior
Bureau of Land Management

- Promoting a responsible recreation education campaign



18

U.S. Department of the Interior
Bureau of Land Management

Virtual Maps - How to Access and How it Works

blm.gov/maps/georeferenced-maps

USE (COVID-19) RESPONSE

of the Interior's current COVID-19 policy incorporates CDC guidance. As CDC science-based guidance changes, our policy will adapt. Visitors have always been encouraged by DOI to review CDC guidance when planning outdoor recreation.

U.S. Department of the Interior
BUREAU OF LAND MANAGEMENT

Home - Visit - Maps - Georeferenced PDF Maps

FREQUENTLY REQUESTED MAPS

WEB APP GALLERY

Price

- Crack Canyon Wilderness Study Area
- Price Canyon Recreation Area
- Temple Mountain Recreation Area
- Wood Hill Trails

Heading out for a remote adventure? No cell coverage? No problem. The BLM has developed georeferenced maps compatible with any georeferenced map mobile application.

Find instructions and available downloadable maps by state, through the lists below.

Tweets by @BLMService

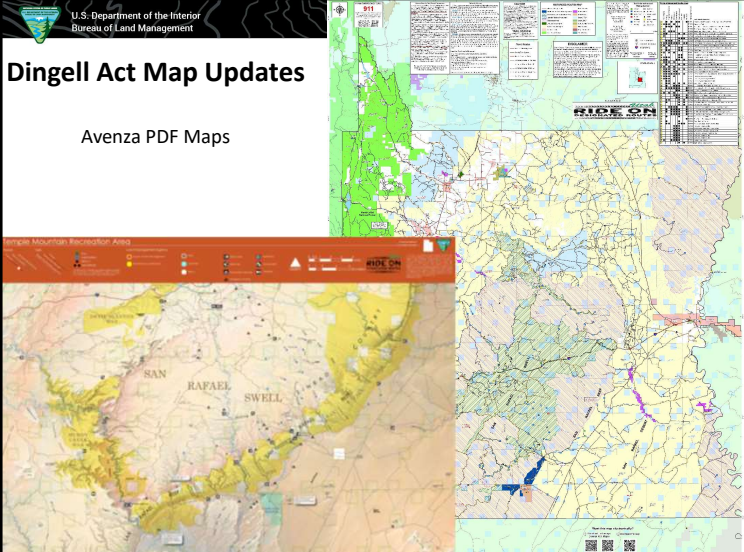
Bureau of Land Management - U.S. Department of the Interior

19

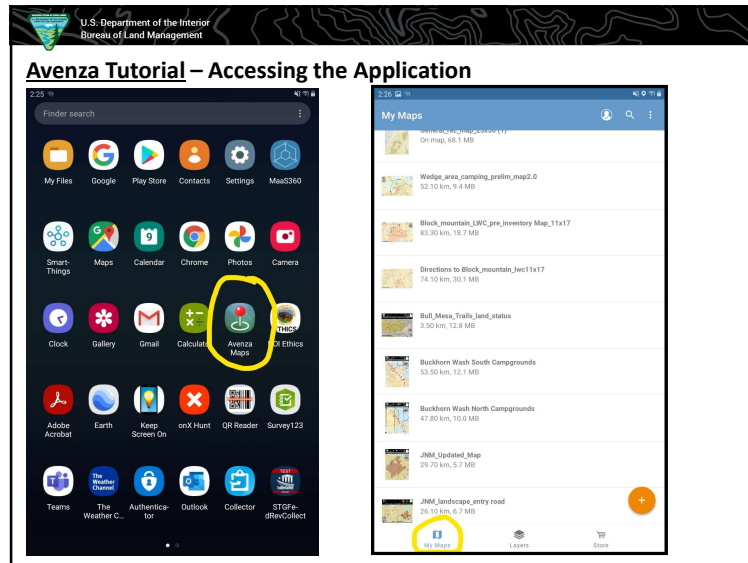
U.S. Department of the Interior
Bureau of Land Management

Dingell Act Map Updates

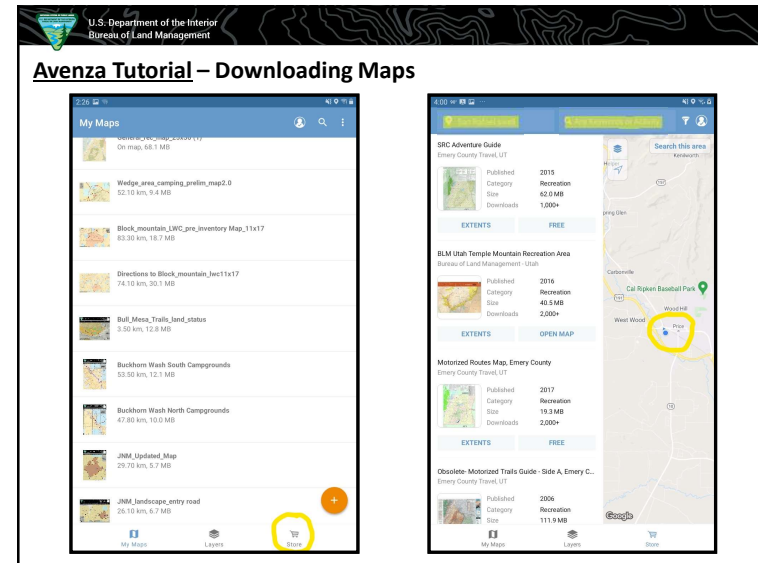
Avenza PDF Maps



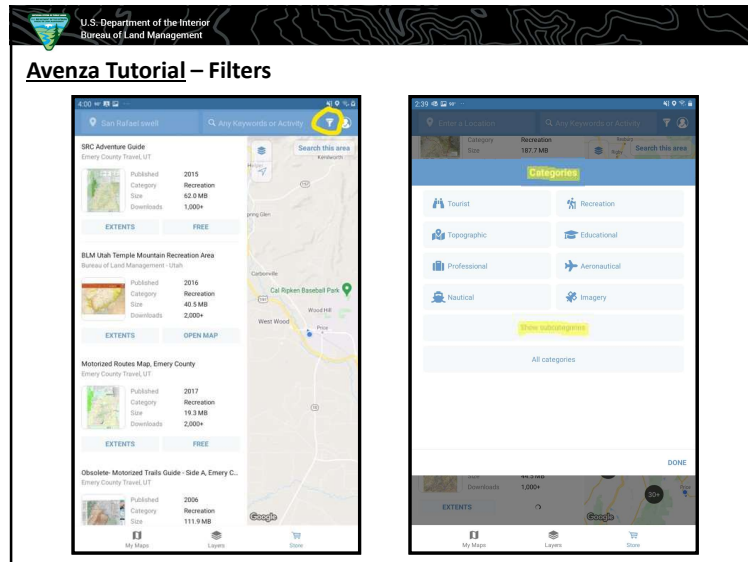
20



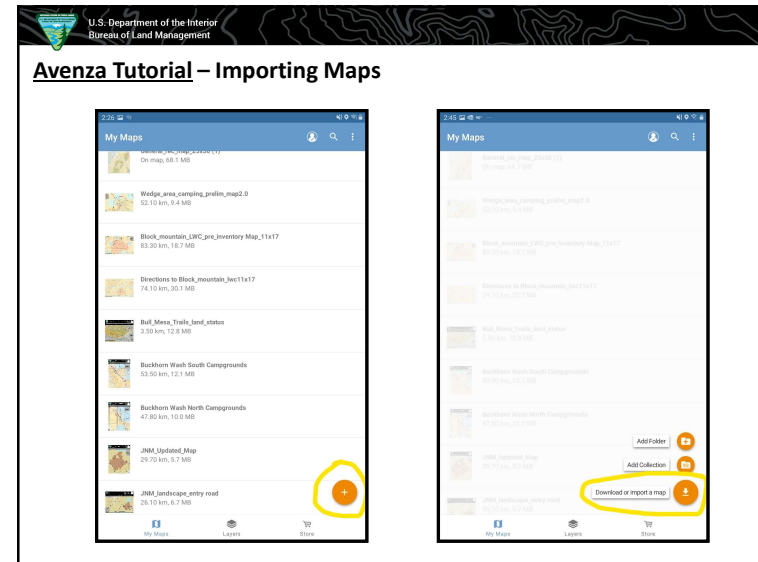
21



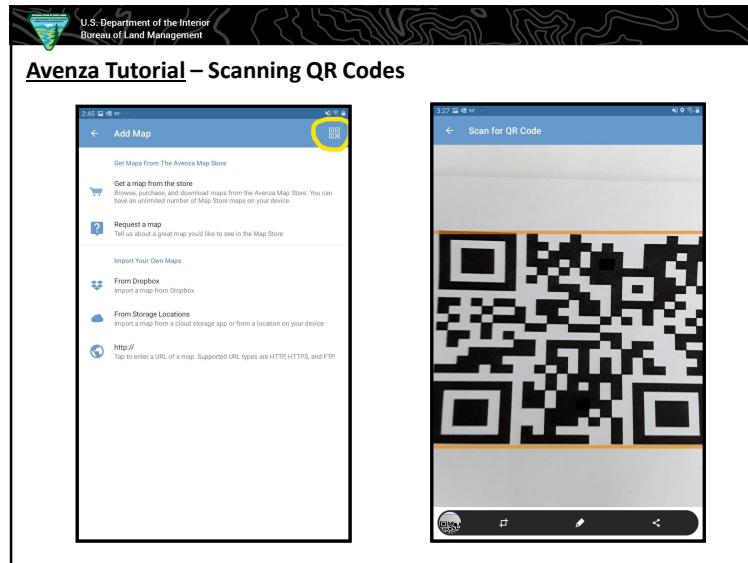
22



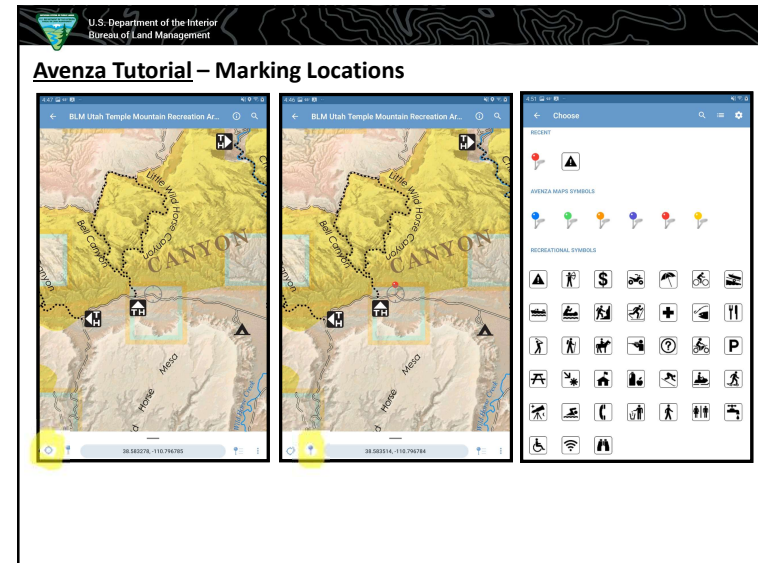
23



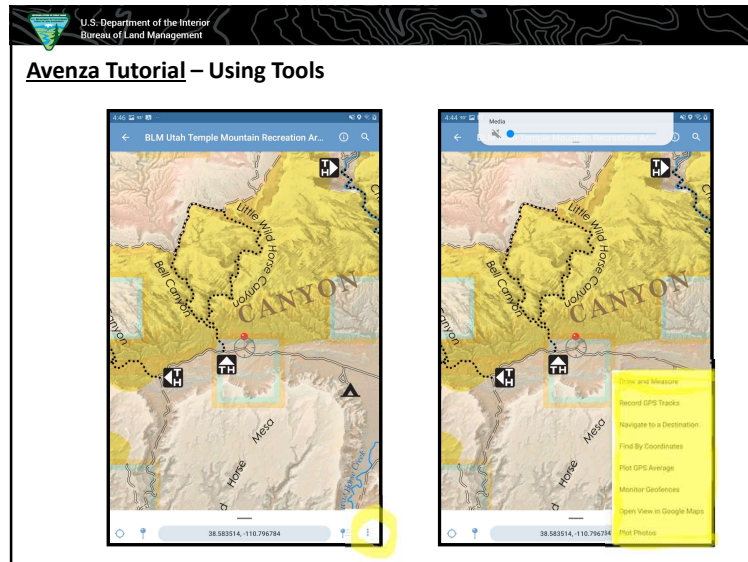
24



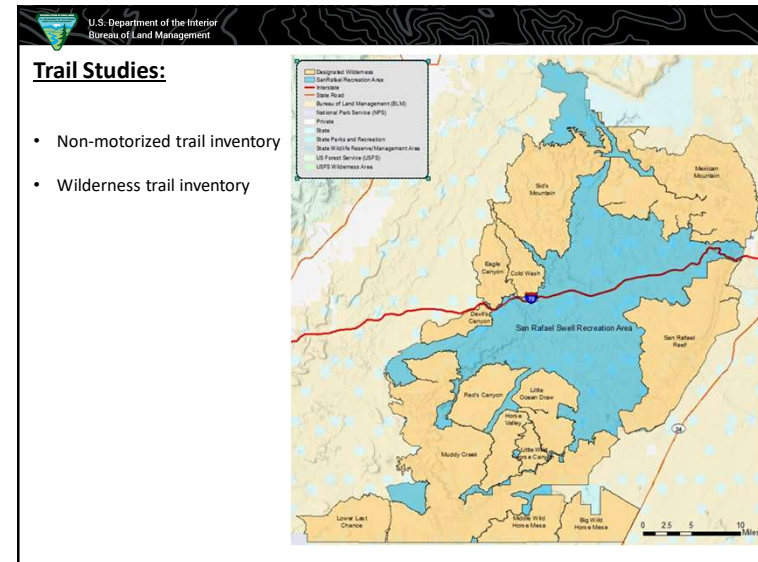
25



26



27



28

U.S. Department of the Interior
Bureau of Land Management

Grants Update:

- Grant Projects in Progress
- Grant Projects Opportunities

29

U.S. Department of the Interior
Bureau of Land Management

Grants Update:


- Grant Projects in Progress
 - ❖ Justensen Flat Trailhead

\$55k project
\$35k awarded

- Parking Area
- Fencing
- Toilet
- Signage

Timeline:
Spring 2022
Summer 2022

State of Utah OHV Fiscal Incentive Grant



30

U.S. Department of the Interior
Bureau of Land Management


Grants Update:

- Grant Projects in Progress
 - ❖ Tables and Benches

\$80k project
\$50k requested

- 35 picnic tables for Buckhorn Wash
- 25 picnic tables for South Temple Wash and Temple Townsite (multiple other locations outside the Recreation Area)

Timeline: Delivery is happening now



State of Utah OHV Fiscal Incentive Grant

31

U.S. Department of the Interior
Bureau of Land Management


Grants Update:

- Grant Projects in Progress (coming up)
 - ❖ Interagency Trail Maintenance

Seeking a FIG Grant to fund an interagency agreement

Agreement would utilize Forest Service seasonal equipment operators, to conduct trail maintenance on BLM OHV trails during the winter months.

Two-year trail period



UTAH OHV PROGRAM 50 YEARS

UTAH DIVISION OF PARKS AND RECREATION
OFF-HIGHWAY VEHICLE
FISCAL INCENTIVE GRANT
APRIL 2021 QUARTERLY APPLICATION

Section A: Project Overview

A1. Project Title: Price Field Office OHV Trail Improvement

A2. Project Sponsor: Bureau of Land Management Price Field Office

A3. Location (nearest town): Price

A4. County or Counties: Carbon and Emery

A5. Project Manager: Myron Jeffs

Substitute Project Manager: Steve Petrich

A6. Address: 125 S 800 W, Price, UT 84501

A7. Telephone: 435-636-3659 AS: E-mail: mjjeffs@blm.gov

A9. Substitute Project Manager's Telephone: 435-636-3602

A10. Substitute Project Manager's Email: spetrich@blm.gov

A11. Amount of Fiscal Assistance Requested \$ 40,800.00 (round up to nearest dollar) (must be less than the total project cost)

A12. Amount of Match (Cash & in-kind) Offered \$ 16,180.00 (round up to nearest dollar)

A13. Total Estimated Project Cost \$ 56,980.00 (round up to nearest dollar)

A14. Match Percentage Based on Project Total 31 % (round to whole number)

32

U.S. Department of the Interior
Bureau of Land Management

Grants Update:

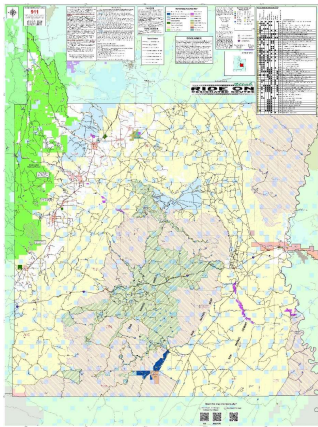
- ❑ Grant Projects in Progress (coming up)
 - ❖ PFO Route Maps

Brainstorming Phase

We recognize the need to get the right information into the hands of the users.

Updated information

Hard copy and digital



33

U.S. Department of the Interior
Bureau of Land Management

Grants Update:

- ❑ Grant Projects Opportunities

State OHV Fiscal Incentive Grants:
 Quarterly Grant Cycle
 Who can apply: Federal Agencies
 State Agencies
 Political Subdivisions of the State
 Non-profit OHV Organizations
 Funds OHV related infrastructure and development
<https://stateparks.utah.gov/resources/grants/state-ohv-fiscal-incentive-grant-fig/>

Land and Water Conservation Fund Grants:
 Annual Grant Cycle
 Who can apply: Local Governments
 Counties
 Towns and Cities
 State Agencies
 Tribal Governments
 Funds the acquisition and/or development of recreation areas
<https://stateparks.utah.gov/resources/grants/land-and-water-conservation-fund/>

STATE OHV GRANT PROGRAM
 State OHV Grant Administrator:
 Rachel Toker
 Phone: 385-303-1519
 Email: rachel.toker@utah.gov

LWCF GRANT PROGRAM
 LWCF Coordinator:
 Susan Zarekarizi
 Phone: 385-239-3232
 Email: susanzarekarizi@utah.gov

34

U.S. Department of the Interior
Bureau of Land Management

Grants Update:

- ❑ Grant Projects Opportunities

State OHV Recreational Trails Program Grants:
 Annual Grant Cycle
 Motorized and Non-motorized Categories
 50/50 match requirement
 Funds recreation infrastructure, development, and more
<https://stateparks.utah.gov/resources/grants/recreational-trails-program/>

RTP GRANT PROGRAM
 RTP Coordinator:
 Chris Haller
 Phone: 801-349-0487
 Email: chrishaller@utah.gov

Utah Office of Outdoor Recreation Grant:
 Annual Grant Cycle
 50/50 match requirement
 Who can apply: Municipalities
 Counties
 Tribal Governments
 Non-profit Organizations
 Funds recreation infrastructure that supports the local economy
<https://issuu.com/goed/docs/2021-oor-grant-programs-guide>

Contact Tara McKee (tmckee@utah.gov) or Patrick Morrison (patrickmorrison@utah.gov) for more information.

35

U.S. Department of the Interior
Bureau of Land Management

Grants Update:

- ❑ Grant Projects Opportunities

Utah Office Outdoor Recreation Recreation Restoration Infrastructure Grants:
 Annual Grant Cycle
 50/50 match requirement
 Funds the restoration and repair of high-use and high-priority trails and trail related infrastructure
<https://issuu.com/goed/docs/2021-oor-grant-programs-guide>

Swell Utah Trails Grant Program
 Annual Grant Cycle
 50/50 match requirement
 Who can apply: Tourism related businesses
 Municipalities
 Counties
 Non-profit Organizations
 Experienced Recreational enthusiasts
 Funds a variety of recreation related trails and infrastructure projects specific to Emery County
<http://www.emerycounty.com/publiclands/The%20Swell%20Utah%20Trails%20Grant%20-%20Full%202021%20Guidelines.pdf>

Contact Tara McKee (tmckee@utah.gov) or Patrick Morrison (patrickmorrison@utah.gov) for more information.

Travel@Emery.Utah.Gov

36

U.S. Department of the Interior
Bureau of Land Management

Volunteers:
Fiscal Year 2021 (to date)

1033 Volunteer Hours	Organizations/Individuals Wasatch Mountain Club Backcountry Horseman USU Eastern Sage Riders Dedicated Hunters Castle Country OHV Club Emery Telcom Emery County Carbon County Southern Utah Wilderness Alliance	Monetary Value of ~ \$23,000
Kiosk Installations	Corral Construction	
Motorized Route Maintenance	Wilderness Barriers	Nonmotorized Trail Maintenance
Sign Repair and Replacement	Disturbance Rehabilitation	

37

U.S. Department of the Interior
Bureau of Land Management

Volunteers:

38

U.S. Department of the Interior
Bureau of Land Management

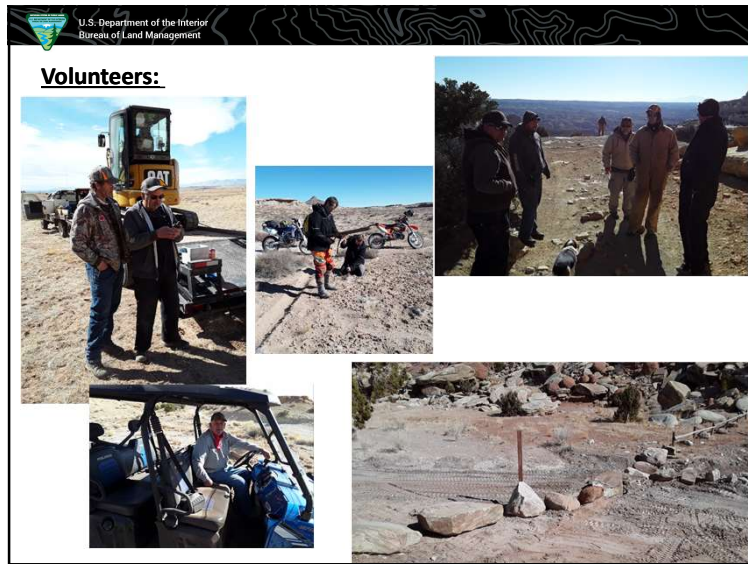
Volunteers:

39

U.S. Department of the Interior
Bureau of Land Management

Volunteers:

40



41



42

U.S. Department of the Interior
Bureau of Land Management

NEPA Updates:

The Wedge Camping Infrastructure Environmental Assessment	<i>Internal scoping, field surveys in progress</i>
Justensen Flat Trailhead Environmental Assessment	<i>Internal scoping/Tribal consultation</i>
Special Recreation Permits Issuance in Wilderness Environmental Assessment	<i>Alternative development</i>
Sids Mountain Wilderness Barrier in Cane Wash Environmental Assessment	<i>Proposed action development</i>
Little Wild Horse Campground (conveyance area) Environmental Assessment	<i>Surveys completed, initiating formal Consultation with the USFWS</i>

We encourage public participation in these planning processes

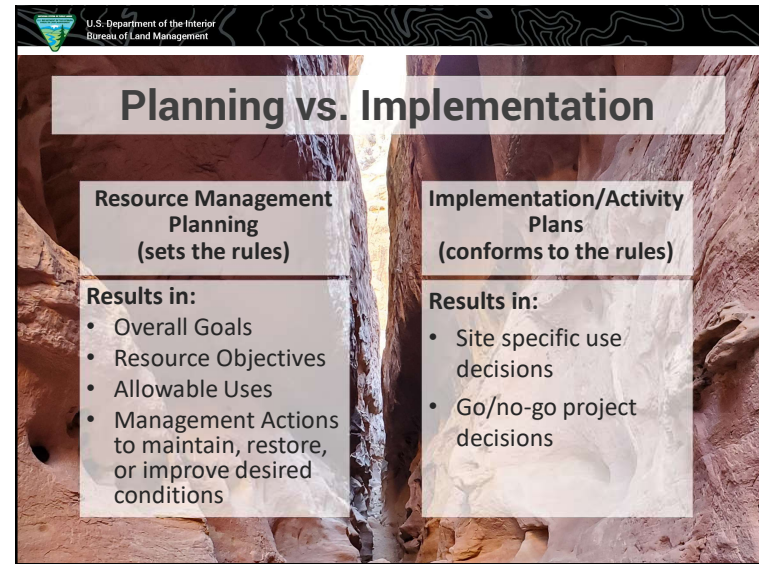
43



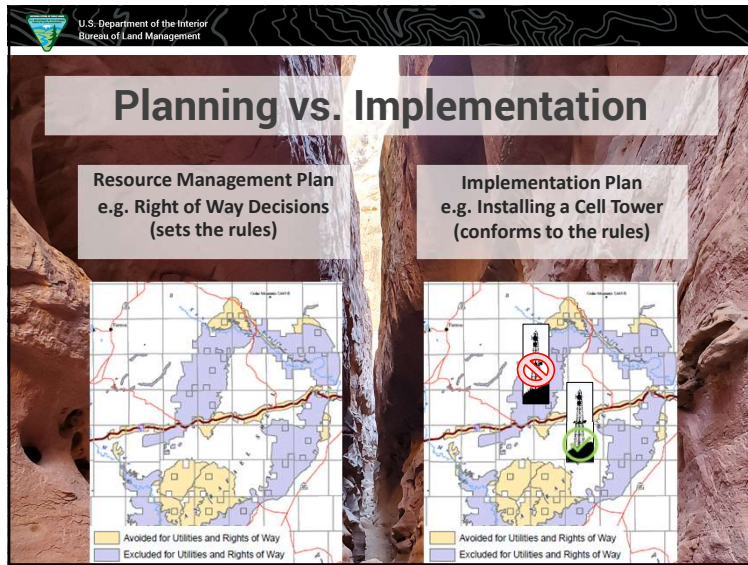
44



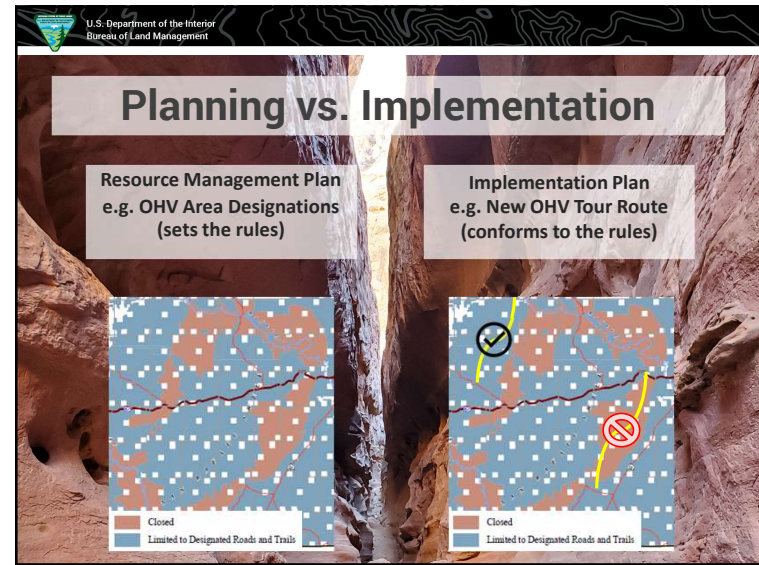
1



2



3



4

RMP Amendment Process

Documents	Amendment Steps
<ul style="list-style-type: none"> RMP Review ACEC Review Analyze Management Situation Draft RMP Amendment Proposed RMP Amendment Decision Record 	<ol style="list-style-type: none"> Formulate Alternatives Analyze Effects 3. NOI and Public Scoping (30 days) Public Comment <ol style="list-style-type: none"> NOA and 60-day Public Comment (ACECs) 30-day Public Comment (no ACECs)

Note: Arrows in the original image point from 'Draft RMP Amendment' to step 3, and from 'Proposed RMP Amendment' to step 4.

5

Public Scoping is: Information Gathering

- Resource issues to be considered
- Data to be used
- Data gaps to be addressed
- Proposed Action and alternatives
 - Existing management to be changed or removed
 - Existing management to be carried forward unchanged
 - Special designation creation, modification, or removal
- Consultation/Coordination needs

6

Federal Register Notice of Intent

FederalRegister.org

Federal Register – the U.S. Government’s Daily Journal

Notice of Intent - begins the formal scoping process and serves as the official legal notice of the plan amendment

NOI Plan Amendments

- San Rafael Swell Recreation Area and 14 Wilderness Areas
- John Wesley Powell National Conservation Area
- Jurassic National Monument
- McCoy Flats Mountain Bike Trail
- Green River Wild and Scenic River Segments
- Desolation Canyon/Turtle Canyon/Labyrinth Canyon Wilderness Areas and Released WSAs Plan Amendment

7

Documents Informing Scoping

- Scoping Introduction Document
 - Planning Area Map
 - Scope
 - Purpose and Need
 - Possible alternatives
- Background and Supporting Documents
 - Analysis of Management Situation
 - Existing ACEC reviews
 - Price RMP review
 - Planning Criteria
 - Relevant Studies

8

U.S. Department of the Interior
Bureau of Land Management

Next Steps

Documents	Amendment Steps
<ul style="list-style-type: none">• RMP Review• ACEC Review• Analyze Management Situation• Draft RMP Amendment• Proposed RMP Amendment• Decision Record	<ol style="list-style-type: none">1. Formulate Alternatives2. Analyze Effects3. NOI and Public Scoping (30 days)4. Public Comment<ol style="list-style-type: none">1. NOA and 60-day Public Comment (ACECs)2. 30-day Public Comment (no ACECs)

9

U.S. Department of the Interior
Bureau of Land Management

BLM-Utah's Dingell Act *Emery County Land Conveyances*

In March 2019, The John D. Dingell, Jr. Conservation, Management, and Recreation Act of 2019 (Act) was passed and signed, becoming Public Law 116-9 (P.L. 116-9).




Conveyances

- Mandated the Bureau of Land Management (BLM) to convey five parcels of land in Emery County, Utah
- Without consideration (without payment for the land's value).
- The BLM has no discretion in these conveyances but must follow a process to complete the conveyance properly.

1

U.S. Department of the Interior
Bureau of Land Management

Emery County Land Conveyances

2

U.S. Department of the Interior
Bureau of Land Management

Dingell Act Conveyance Breakdown

Project Name	Section of the Act	Agency the Land is Being Conveyed To	Est. Acreage
Goblin Valley State Park Expansion	Section 1251(a)	Utah Division of Parks and Recreation of the Utah Department of Natural Resources	6,341
Emery City Recreation Area	Section 1254(a)(1)	City of Emery, Utah	643
Huntington Airport	Section 1254(a)(2)	Emery County	362
Emery County Sherriff's Office	Section 1254(a)(3)	City of Emery, Utah	5
Buckhorn Information Center	Section 1254(a)(4)	Emery County	2.5
Total Approximate Acreages			7,353.5

3

U.S. Department of the Interior
Bureau of Land Management

Conveyance Process Status

Step	Status	Date of Completion
Environmental Site Assessments	Field Work Completed 6/28 thru 6/30/2021; Utah State Office currently working on ESA document- expected to be finalized in Fall 2021.	
Mineral Potential Reports	Complete	April 2021
Cadastral's Final Legal Descriptions	Field work done; records and legal descriptions expected to be finalized in Fall 2021	
Notice of Realty Action (NORA)	The BLM does not have discretion on the land conveyances, therefore, with input from the Solicitor, it was determined that NORA's are not required.	Not Required
Notification of Tribes	Complete	6/2/2021
ROW Holder Notifications	Complete	12/11/2020

4

U.S. Department of the Interior
Bureau of Land Management

Conveyance Process Status Continued

Step	Status	Date of Completion
Grazing Permittee Notifications	Complete	3/5/2021
NEPA	The BLM does not have discretion on the land conveyances, therefore, with input from the Solicitor, it was determined that NEPA is not required.	Not Required
Class III Arch Surveys	Completed for Emery County Sherriff's Office, Huntington Airport and Emery City Recreation Area. Buckhorn was completed previously in 2009. Goblin Valley is being conveyed to a State agency; therefore, an Arch Survey was not required.	12/10/2020
Patent Request Letter	Currently drafting the letters to send to Utah State Office	
Signing of the Patent	Utah State Office will finalize the patent document.	

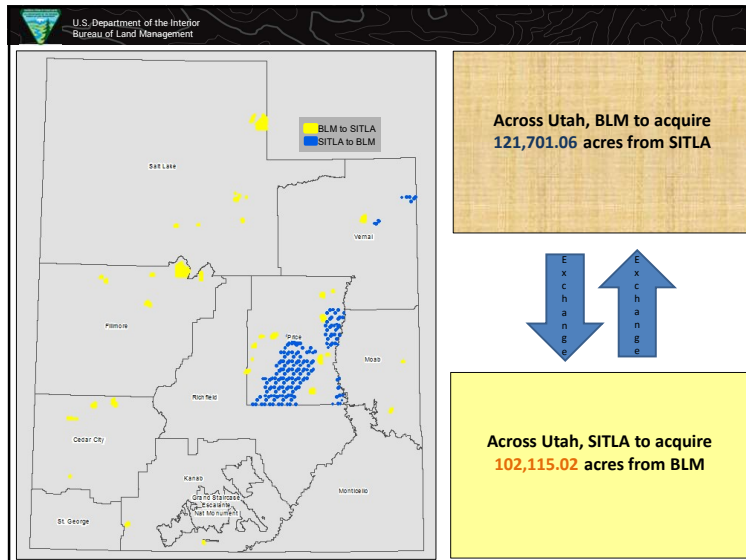
5

U.S. Department of the Interior
Bureau of Land Management

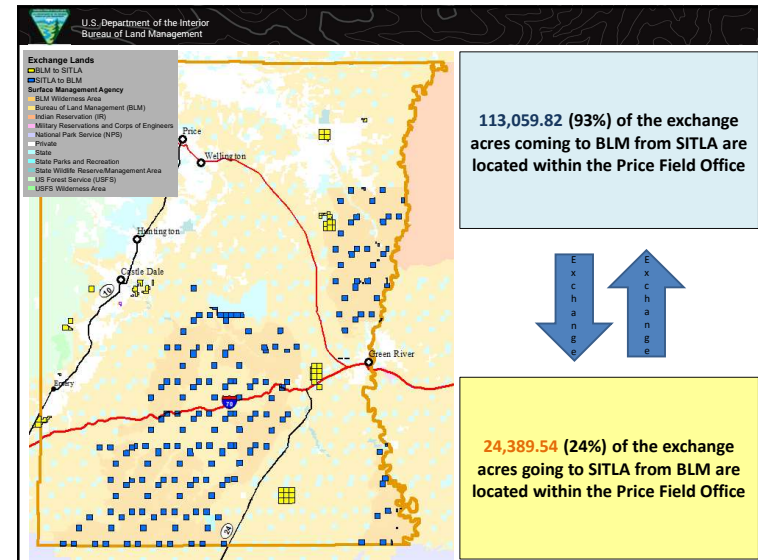
BLM-Utah's Dingell Act: Land Exchange

- An exchange of land between SITLA and BLM **mandated** by the Dingell Act
- **Value** of lands identified for exchange must be equal (ie. not acre for acre)
 - Surface and mineral rights
 - Surface rights only
 - Mineral rights only
- Like the Conveyances, BLM must still also **follow a process** to complete properly

6



7



8

U.S. Department of the Interior
Bureau of Land Management

BLM-Utah's Dingell Act Land Exchange Process

1. Receive the exchange proposal from the State of Utah.
2. Submit Land Status Record (LSR) to Cadastral
3. **Prepare a Feasibility Report (SO with coordination from FO). BLM HQ approval required.**
4. **Publish a Notice of Exchange Proposal (NOEP) in the newspaper where the lands are located and Notify right-of-way holders, grazing permittees, etc. (SO with coordination of FO)**
5. **Certificate of Inspection and Possession (CIP) (FO completes and reports to SO)**
6. Appraise lands to determine value (simultaneous to other steps) (SO, AVSO, SITLA)
7. **NEPA and other ground surveys (mineral potential report, cultural, wildlife, plants, HazMat, public scoping/comment periods) (SO and FO)**
8. Submit Notice of Decision for HQ approval (SO)
9. Publish Notice of Decision in the newspaper with a 45-day protest period (SO)
10. **Respond to protests, if any, and simultaneously 60-day Governor notification (SO/FO with SOL)**
11. Equalization of value (SO, AVSO, SITLA)
12. **Second CIP (within 60-days of closing transaction) (FO)**
13. Prepare final title evidence (SO)
14. Transfer title (SO, State Director)
15. Issue final Title Opinion (SOL/DOJ)
16. Issue records notation (SO Records Team)

**Bold text denotes Field Office Involvement*
**SO = State Office Land Tenure Lead*
**FO = Field Office*
**SOL = Solicitor*
**DOJ = Dept. of Justice*
**AVSO = Appraisal and Valuation Information System*

Parcel: SE276 Location: 523402E 4271202N Camera Direction: West

9

U.S. Department of the Interior
Bureau of Land Management

BLM-Utah's Dingell Act: Feasibility Report

- Required for every land exchange to serve as a **communication tool** between staff at all levels
- **Document** the analysis of the **preliminary information** and **assess the entire work effort** associated with the land exchange process
 - Evaluates public benefit and land use plan conformance
 - Assigns cost and processing responsibilities
 - Identify/Predict potential issues and concerns
- Not intended to replace the resource evaluation and NEPA process

Parcel: SE276 Location: 523402E 4271202N Camera Direction: West

10

U.S. Department of the Interior
Bureau of Land Management

BLM-Utah's Dingell Act: Feasibility Report Cont.

Feasibility Report Steps:

1. Feasibility Review Statement – an overall synopsis of the exchange
2. Feasibility Report and respective exhibits – provides a more detailed description of the exchange that expounds upon the brief synopsis in the Review Statement
3. Feasibility Summary – another synopsis of the exchange that details public interest factors, land use plan conformance issues, minerals issues, governmental support, etc.
4. Draft Agreement to Initiate (ATI) and respective exhibits – documentation of the party's responsibilities with the exchange and exhibits containing information such as encumbrances, a detailed legal description, water rights, grazing permits, mining claims, etc.
5. Draft NOEP – acts as a Federal Register Notice for exchanges by notifying the public of the upcoming exchange yet doesn't publish in the FRN.
6. Pertinent sections of the enabling legislation for reference
7. MoU for Cooperating Agencies – the Dingell Act LEX included an MoU signed by PLPCO and SITLA for creation of the Environmental Assessment (EA)
8. Solicitor's Office Memo – this is a legal sufficiency review that delineates any legal concerns/deficiencies inherent with the exchange
9. Information/Briefing Memorandum – standard document provided to the Department/HQ for any major project coming from the State Director
10. Note to Reviewer

Parcel: SE276 Location: 523402E 4271202N Camera Direction: West

11

U.S. Department of the Interior
Bureau of Land Management

BLM-Utah's Dingell Act Certificate of Possession and Inspection (CIP)

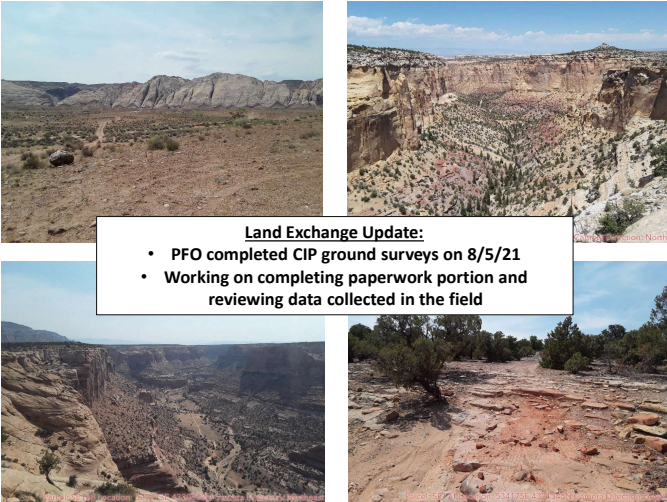
CIP Process

- **Any land coming into BLM management must undergo the CIP process**
- PFO Realty Staff to review both authorized and unauthorized uses of the land (ie. existing easements, grazing permits, water rights, known trespasses, special events)
 - Coordinate with SITLA staff
 - Review aerial photography and maps
 - Ground inspections
- PFO Field Office staff "all hands-on deck" to physically inspect each property by hiking, driving, and helicopter
- All CIP surveys must be completed a second time and within 60 days prior to final transaction

Parcel: SE276 Location: 523402E 4271202N Camera Direction: West

12

U.S. Department of the Interior
Bureau of Land Management




Land Exchange Update:

- PFO completed CIP ground surveys on 8/5/21
- Working on completing paperwork portion and reviewing data collected in the field

13

U.S. Department of the Interior
Bureau of Land Management



Questions?

14