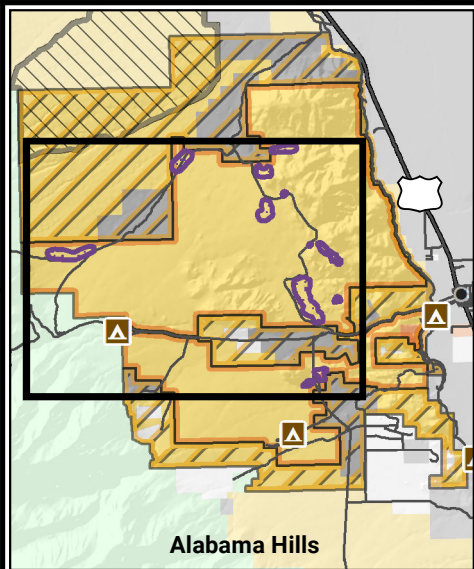
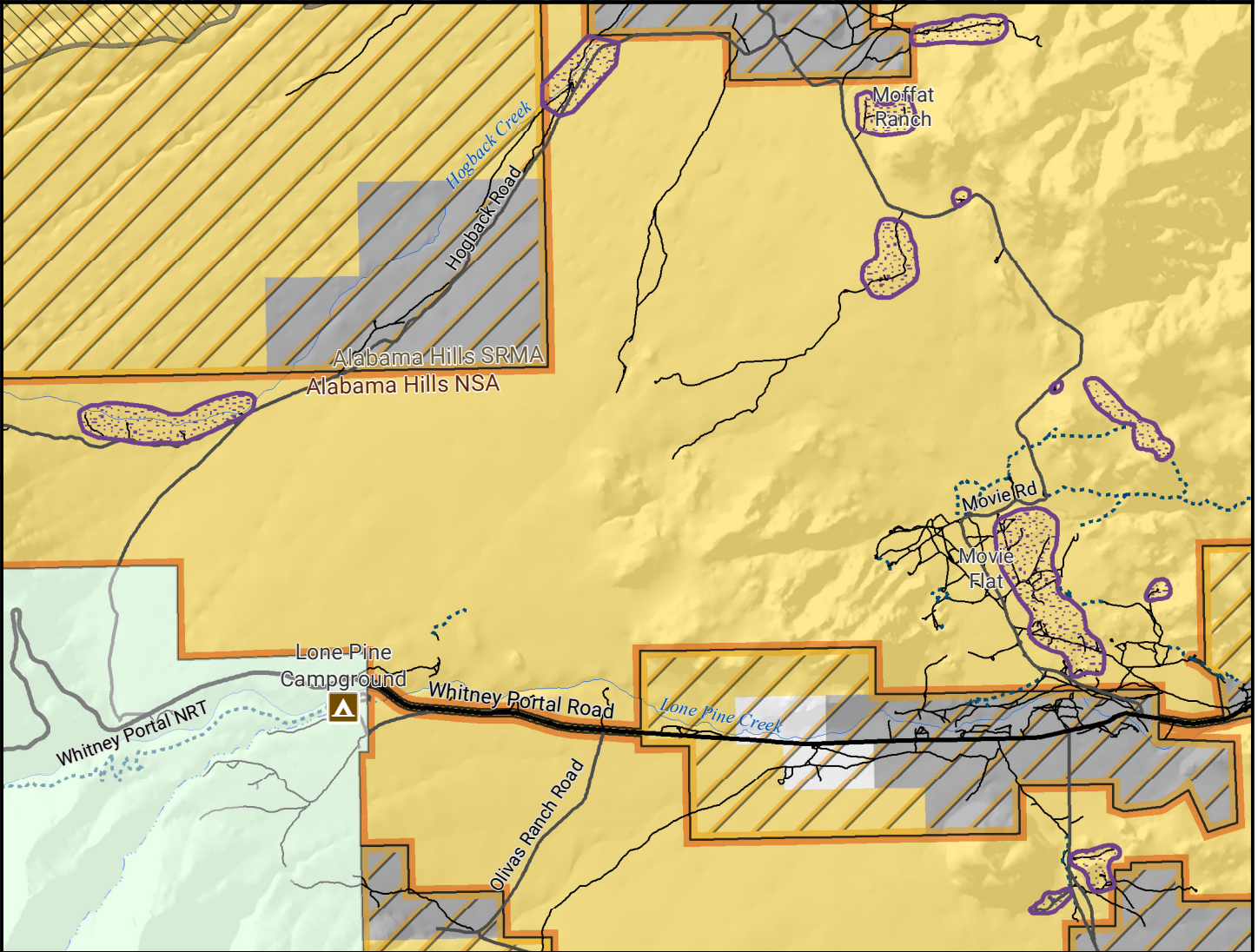




Alabama Hills Planning Area

National Scenic Area (NSA) & Special Recreation Management Area (SRMA)



Designated Semi-primitive Camping

Land Management

- BLM
- USFS
- BIA
- LADWP
- Private
- Alabama Hills SRMA
- Alabama Hills NSA
- Wilderness Study Area

- Campground
- 2WD
- 4WD Low Clearance
- Trail
- Areas for Designated Semi-primitive Campsites



Date Produced: 1/13/2021

No warranty is made by the BLM as to the accuracy, reliability, or completeness of these data for use or for purposes not intended by BLM