

McInnis Canyons National Conservation Area & Black Ridge Canyons Wilderness Travel Map

All Motorized and Bicycle Travel is Limited To Designated Routes!

Land Ownership and Administration	Route Designations	Open To:
MCNCA Boundary	Foot Only	Hiking
Black Ridge Canyons Wilderness	Foot and Horse	Hiking
Bureau of Land Management	Bicycle and Foot Only	Hiking
Private	Bicycle, Horse, Foot	Hiking
State Land/State Wildlife Area	Motorcycle	Hiking
Colorado National Monument	ATV (50 inches or less)	Hiking
Areas Limited to Day Use Only	Full Size Vehicles	Hiking
	County Maintained Roads	Hiking
	Kokopelli Trail	Hiking

This map was produced by the BLM/MCNCA - April 2020
NOTE TO MAP USERS: No warranty is made by the Bureau of Land Management as to the accuracy, reliability, or completeness of the data layers shown on this map.

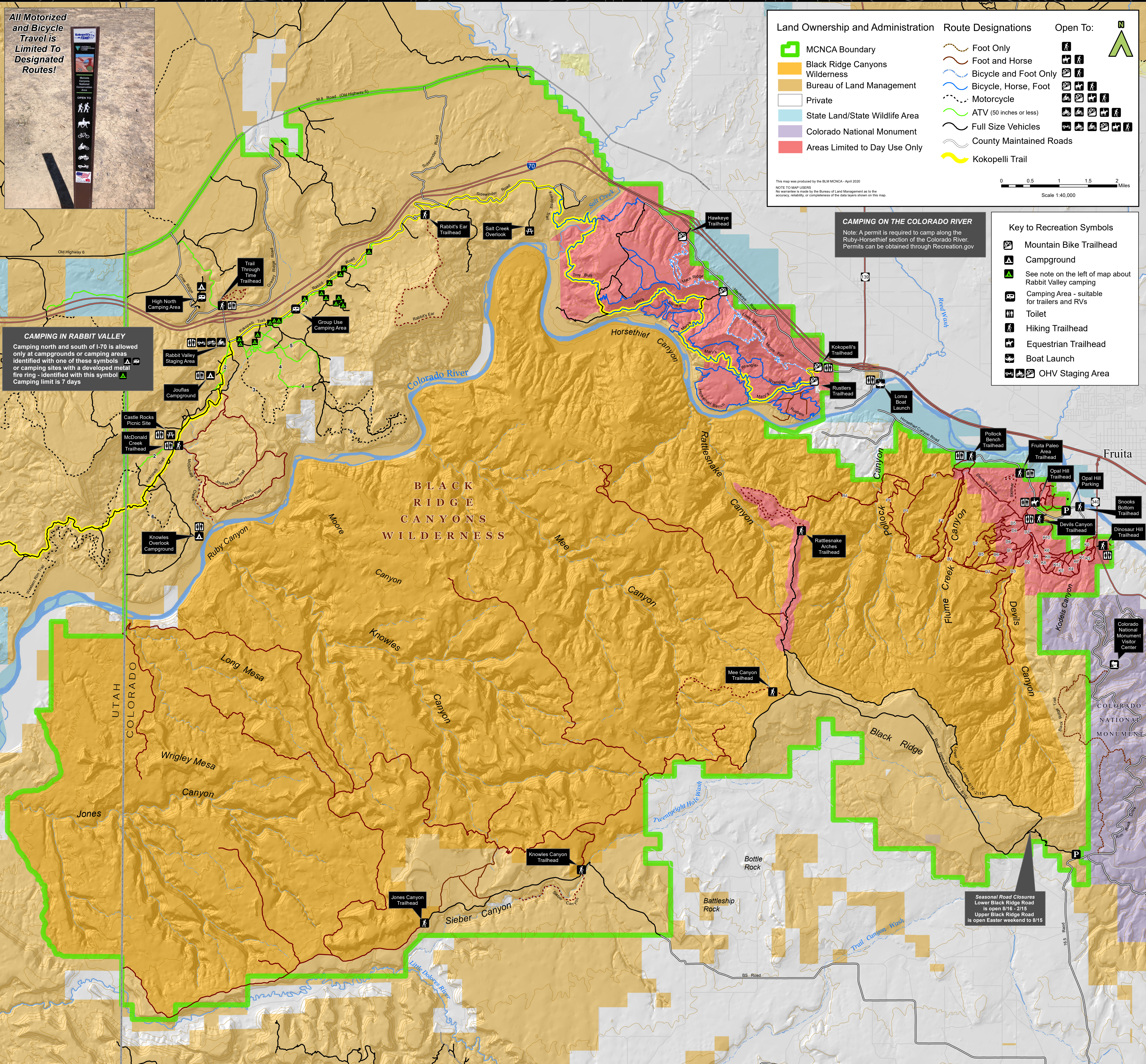
Scale 1:40,000

CAMPING IN RABBIT VALLEY
Camping north and south of I-70 is allowed only at campgrounds or camping areas identified with one of these symbols or camping sites with a developed metal fire ring - identified with this symbol. Camping limit is 7 days.

CAMPING ON THE COLORADO RIVER
Note: A permit is required to camp along the Ruby-Horsethief section of the Colorado River. Permits can be obtained through Recreation.gov

Key to Recreation Symbols

- Mountain Bike Trailhead
- Campground
- See note on the left of map about Rabbit Valley camping
- Camping Area - suitable for trailers and RVs
- Toilet
- Hiking Trailhead
- Equestrian Trailhead
- Boat Launch
- OHV Staging Area



Seasonal Road Closures
Lower Black Ridge Road is open 8/16 - 2/15
Upper Black Ridge Road is open Easter weekend to 8/15