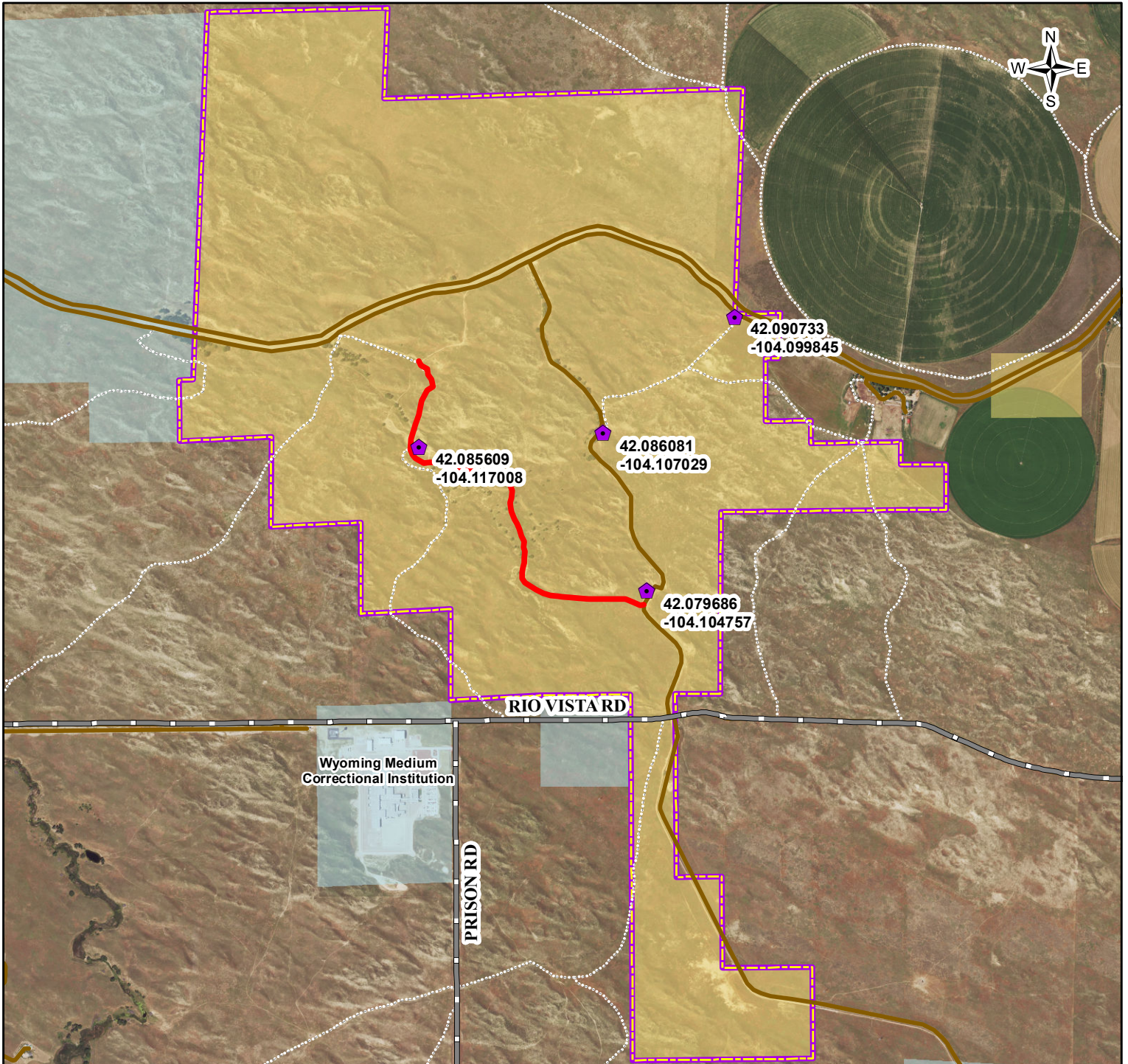
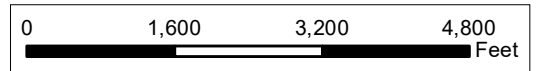




# DUMP SITES FOR CLEANUP & MONITORING GOSHEN COUNTY, WYOMING



- Dump Sites
- Problematic Dumping Area along Road 4X4
- County Roads
- Secondary road
- Two track roads 4X4
- Torrington Sand Hills BLM
- Bureau of Land Management
- Private
- State



**DISCLAIMER:** No warranty is made by the Bureau of Land Management as to the accuracy, reliability or completeness of these data for individual or aggregate use with other data. Original data were compiled from various sources and may be updated without notification.

Map created by: BLM CFO GIS  
Map create date: 25May2021  
Proj. Coordinate System: NAD 1983 UTM Zone 13N  
Data Credits: BLM Corporate Data