



White Mountains National Recreation Area

Alaska

U.S. DEPARTMENT OF THE INTERIOR | BUREAU OF LAND MANAGEMENT

Public Recreation Cabins
There are 12 public recreation cabins and two shelters in the White Mountains NRA. The cabins are accessed most easily during the winter, but a few cabins can be reached during the summer by foot, mountain bikes, 4-wheelers, boats, and even airplanes.

Cabin Features
Cabins are equipped with bunk beds, a table and benches, propane cook stove, propane lantern, fire extinguisher, saw, ax, broom, wood stove and outhouse. Renters need to bring their own food, water or water treatment system, sleeping bags and pads, matches, utensils, toilet paper, garbage bags, and 1-pound propane bottles for the cook stove and lantern. Carry extra lantern mantles or candles in case the lanterns don't function properly. Cabin users should be prepared to cut firewood or bring some with them.

Borealis-LeFevre Cabin (12' x 16'), 6 person



Cache Mountain Cabin (12' x 16'), 6 person



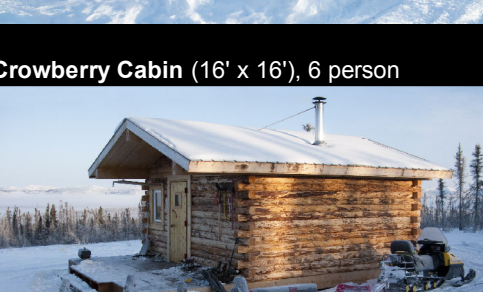
Caribou Bluff Cabin (10' x 12'), 4 person



Colorado Creek Cabin (12' x 16'), 4 person



Crowberry Cabin (16' x 10'), 6 person



Eleazar's Cabin (12' x 16'), 6 person



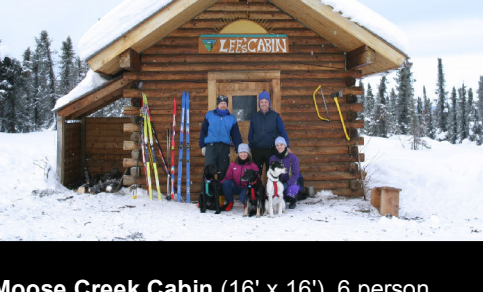
Fred Blixt Cabin (12' x 16'), 4 person



Lee's Cabin (12' x 16'), 6 person



Moose Creek Cabin (16' x 16'), 6 person



Richard's Cabin (16' x 25'), 6+ person



Summit Trail Shelter



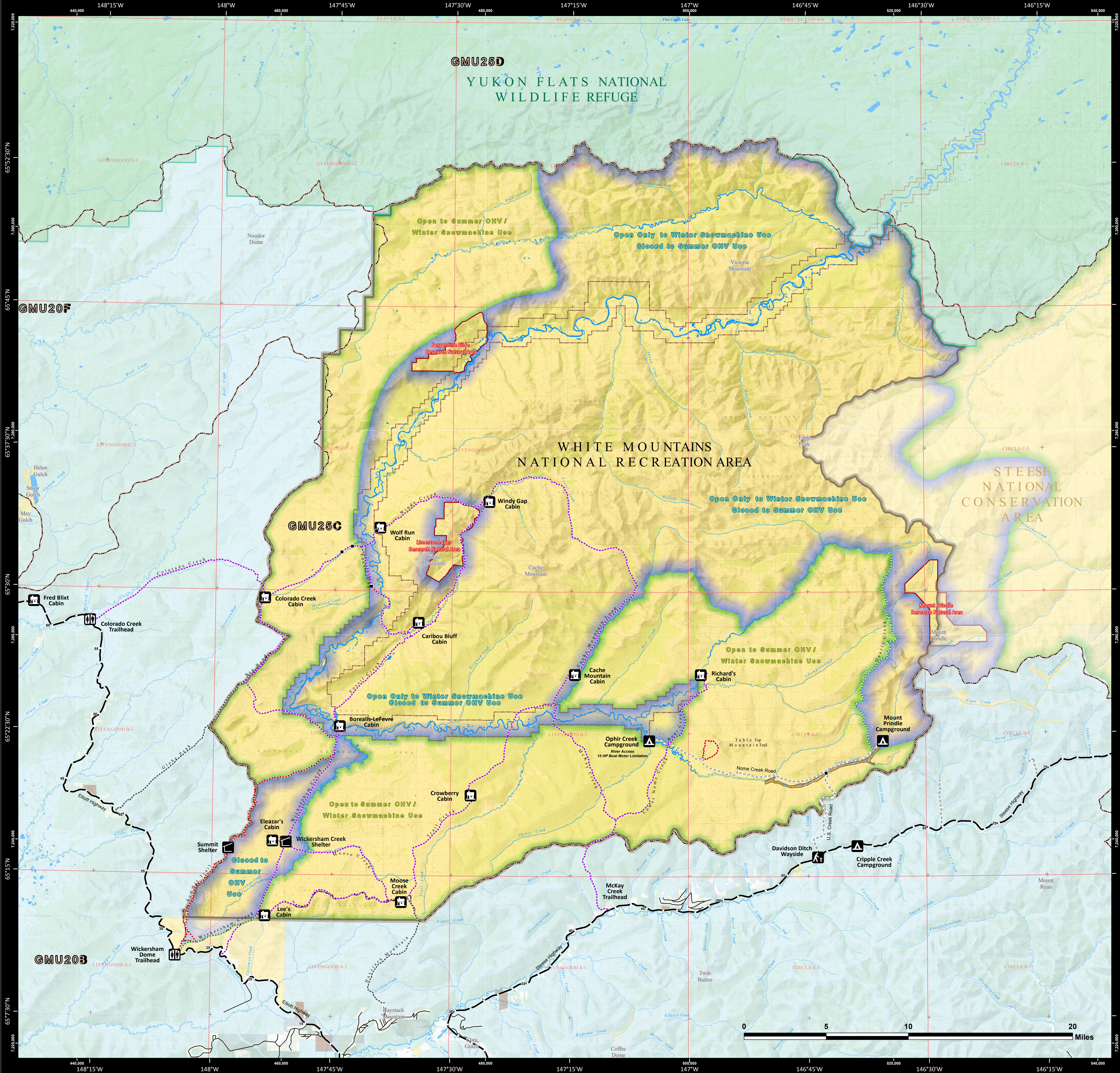
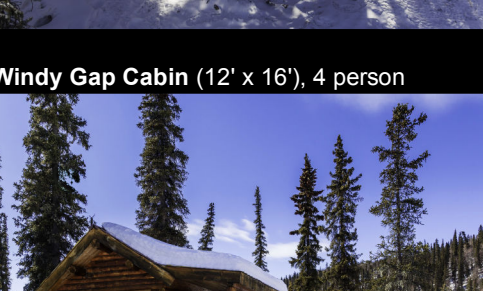
Wickersham Trail Shelter



Windy Gap Cabin (12' x 16'), 4 person



Wolf Run Cabin (12' x 16'), 6 person



Cabin Rentals
Cabins must be reserved in advance and paid for when you make your reservation. Stays are limited to three consecutive nights, with reservations beginning noon of the first day's stay to noon of the last day. Reservations cost \$25 per night and may be made up to 30 days in advance. Weekends and holidays are times of peak use. Reservations for the cabins can be made through the Recreation.gov website under "White Mountains National Recreation Area, Alaska" or by calling toll free 1-877-444-6777. Also located in the White Mountains National Recreation Area are two trail shelters that are available on a first-come, first-served basis only.

Beaver Creek National Wild River
Beaver Creek National Wild River runs through a remote area of interior Alaska. Once you put in on Nome Creek near Ophir Creek campground, there are no roads or services until you reach the bridge on the Dalton Highway. Beaver Creek flows west past the jagged limestone ridges of the White Mountains before flowing to the north and east, where it enters the Yukon Flats and joins the Yukon River. Beaver Creek has long been a popular destination for river adventurers. The river's clear water, modest Class I rapids, and unparalleled scenery make for a relaxing trip. Floating Beaver Creek can take from seven days to three weeks to complete. For shorter trips, arrangements can be made with an air taxi for a gravel bar pick-up near Victoria Creek. Others continue for several more weeks onto the Yukon River and take out at the bridge on the Dalton Highway. This 360-mile trip has been called the longest road-to-road float in North America. Camping is best on the many gravel bars along Beaver Creek, but beware, intense rainstorms in the White Mountains can cause rapid rises in Beaver Creek's water level, so choose campsites carefully and tie up your boats. BLM's Borealis-LeFevre Cabin, at river mile 32, is also available by reservation. Use dead and down wood for campfires. The BLM supports Leave No Trace camping techniques. Remove any trace of your camp, such as fire rings, scatter any firewood piles, and pack out your trash.

Flowing through the heart of the White Mountains
Beaver Creek flows west past the jagged limestone ridges of the White Mountains before flowing to the north and east, where it enters the Yukon Flats and joins the Yukon River. Beaver Creek has long been a popular destination for river adventurers. The river's clear water, modest Class I rapids, and unparalleled scenery make for a relaxing trip. Floating Beaver Creek can take from seven days to three weeks to complete. For shorter trips, arrangements can be made with an air taxi for a gravel bar pick-up near Victoria Creek. Others continue for several more weeks onto the Yukon River and take out at the bridge on the Dalton Highway. This 360-mile trip has been called the longest road-to-road float in North America. Camping is best on the many gravel bars along Beaver Creek, but beware, intense rainstorms in the White Mountains can cause rapid rises in Beaver Creek's water level, so choose campsites carefully and tie up your boats. BLM's Borealis-LeFevre Cabin, at river mile 32, is also available by reservation. Use dead and down wood for campfires. The BLM supports Leave No Trace camping techniques. Remove any trace of your camp, such as fire rings, scatter any firewood piles, and pack out your trash.

- Milepost (MP)
- Trail Bridge
- Highway
- Unpaved (No Winter Maintenance)
- Research Natural Areas
- Wild and Scenic River Corridor
- Game Management Unit (7/1/2018)
- USGS 1:63,360 Index

- Open to Non-Motorized Use
- Trail; some trails are maintained primarily for winter use and may not be suitable for summer use*
- Trail Open to UTVs. UTVs weighing up to 1,500 pounds curb weight** and up to 64 inches wide.
- Non-BLM Trail
- *Summer Use defined as May 1st thru Oct 14th
- **Winter Use defined as Oct 15th thru April 30th

- Open to winter use* of snowmachines weighing up to 1,000 pounds curb weight** and up to 50 inches wide.
- Open to summer* OHVs and winter snowmachines weighing up to 1000 pounds curb weight** and up to 50 inches wide.
- Recreational Gold Panning Area, open to Recreational Vehicles and highway vehicles.
- **Curb weight is the unloaded vehicle weight with full fuel and oil.

- Administered Lands
- Bureau of Land Management
- Fish and Wildlife Service
- Local Government
- Native Allotment
- Private
- State

Contact Information
Bureau of Land Management
Fairbanks District Office
222 University Avenue
Fairbanks, Alaska 99709
Phone: 907-474-2200
<https://www.blm.gov/alaska>
Alaska Department of Fish & Game
Fairbanks Office
1300 College Rd
Fairbanks, Alaska 99701-1551
Phone: 907-459-7206
<http://www.adfg.alaska.gov>
Map not to be used to determine federal subsistence hunting areas.

