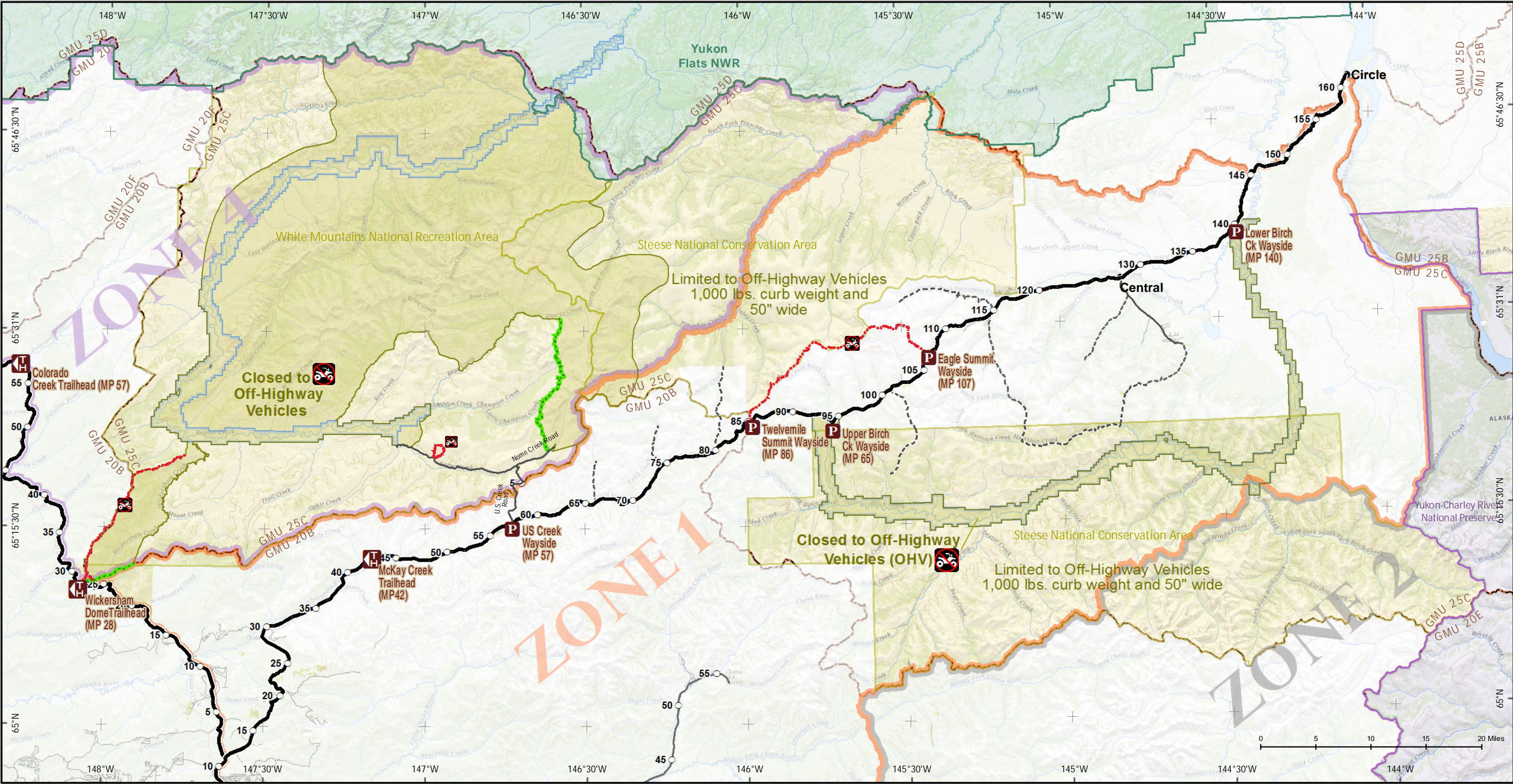




GMU 25C Steese and White Mountains Area: Fortymile Caribou Hunt Access for Summer Hunters (May 1 - Oct. 14th)

U.S. DEPARTMENT OF THE INTERIOR | BUREAU OF LAND MANAGEMENT | ALASKA | EASTERN INTERIOR FIELD OFFICE

7/19/2021



It is YOUR Responsibility to Know Where You Are

- Know State of Alaska and Federal Subsistence hunting regulations

-If hunting on mining claims: notify miners of plans to hunt in the area. Miners are obligated to restrict access to areas of the claims that could present safety risks.

Open to Federal Subsistence Hunting

BLM: Cross-country use of OHVs limited to those no greater than 1,000 pounds curb weight and 50" wide  
BLM: Closed to Off-Highway Vehicles (OHV) May 1- Oct. 14

National Park Service  
Fish and Wildlife Service

Non-Motorized Trail  
Trail Open to UTVs weighing up to 1,500 pounds curb weight & up to 64 inches wide.  
Unmaintained OHV Road

Wild & Scenic River Corridor  
Alaska Game Management Unit (GMU)  
Fortymile Caribou Herd Hunt Zones

All Fortymile and White Mountains Caribou hunts are subject to openings and closings on short notice. Call the ADF&G Fortymile hotline at (907) 267-2310 for more information before departing for the field.

<https://www.blm.gov/office/eastern-interior-field-office>  
Bureau of Land Management  
Eastern Interior Field Office  
222 University Ave.  
Fairbanks, AK 99709  
Phone: 907-474-2200



Disclaimer: No warranty is made by the Bureau of Land Management as to the accuracy, reliability, or completeness of these data for individual or aggregate use with other data. Original data were compiled from various sources. This information may not meet National Map Accuracy Standards. This product was developed through digital means and may be updated without notification. The information displayed on this map should be used for graphic display only. For official land status information, refer to Cadastral Survey plats, Master Title Plats, and landstatus case-files.