



## Fire Prevention Order CON02-21-07 Stage 2 Fire Restrictions

### **Kremmling Field Office**

**Firefighter and public safety are the top priorities in wildfire management. To aid in public safety we are entering fire restrictions, under authority of the Federal Land Policy and Management Act of 1976 (Title 43, United States Code, Section 1701, et. seq.) pursuant to Title 43, Code of Federal Regulations (CFR) 9212.2(a), the Bureau of Land Management Kremmling Field Office is implementing fire restrictions for all BLM-administered public lands within the boundaries of Eagle County beginning at 12:01 a.m. on June 25, 2021.**

### **Stage II Restriction:**

**Under Title 43 CFR Section 9212.1, Prohibited Acts: Unless permitted in writing by the Authorized Officer, it is prohibited on the above described public lands to:**

Perform any act restricted by this Fire Prevention Order which includes:

1. Building, maintaining, attending or using a fire or campfire, charcoal grill, coal, wood burning stove or shepherders stove, including in developed camping and picnic grounds. Devices using pressurized liquid or gas are exempted.
2. Smoking, except within an enclosed vehicle, trailer, building or tent.
3. Using an explosive requiring fuse or blasting caps, fireworks, rockets, exploding targets and tracers or incendiary ammunition.
4. Operating a chainsaw without an approved spark arrestor, and without a chemical pressurized fire extinguisher and a round-point shovel with an overall length of at least 35 inches. The extinguisher will be with the equipment operator. The shovel may be kept with fueling supplies but readily available for use.
5. Welding, or operating an acetylene or other torch with open flame (except with a current permit, contract or letter of authorization).
6. Operating or using any internal combustion engine without a spark arresting device properly installed, maintained and in effective working order meeting either:
  - a. Department of Agriculture, Forest Service Standard 5100-1a; or
  - b. Appropriate Society of Automotive Engineers (SAE) recommended practice J335 (b) and J350 (a).

Violation of this Fire Prevention Order is punishable by a fine of not more than \$100,000, or imprisonment of not more than 12 months, or both. (43 CFR 9212.4 and 18 U.S.C. 3571). Restitution for total suppression and damage costs incurred will be borne by the violator.



Pursuant to Title 43 CFR Section 9212.2, the following persons are exempt from this order:

1. Persons with a permit or letter of authorization specifically authorizing the prohibited act or omission.
2. Any federal, state, or local officer or member of an organized firefighting force in the performance of an official duty.

**Title 43 CFR § 9212.4 Penalties**

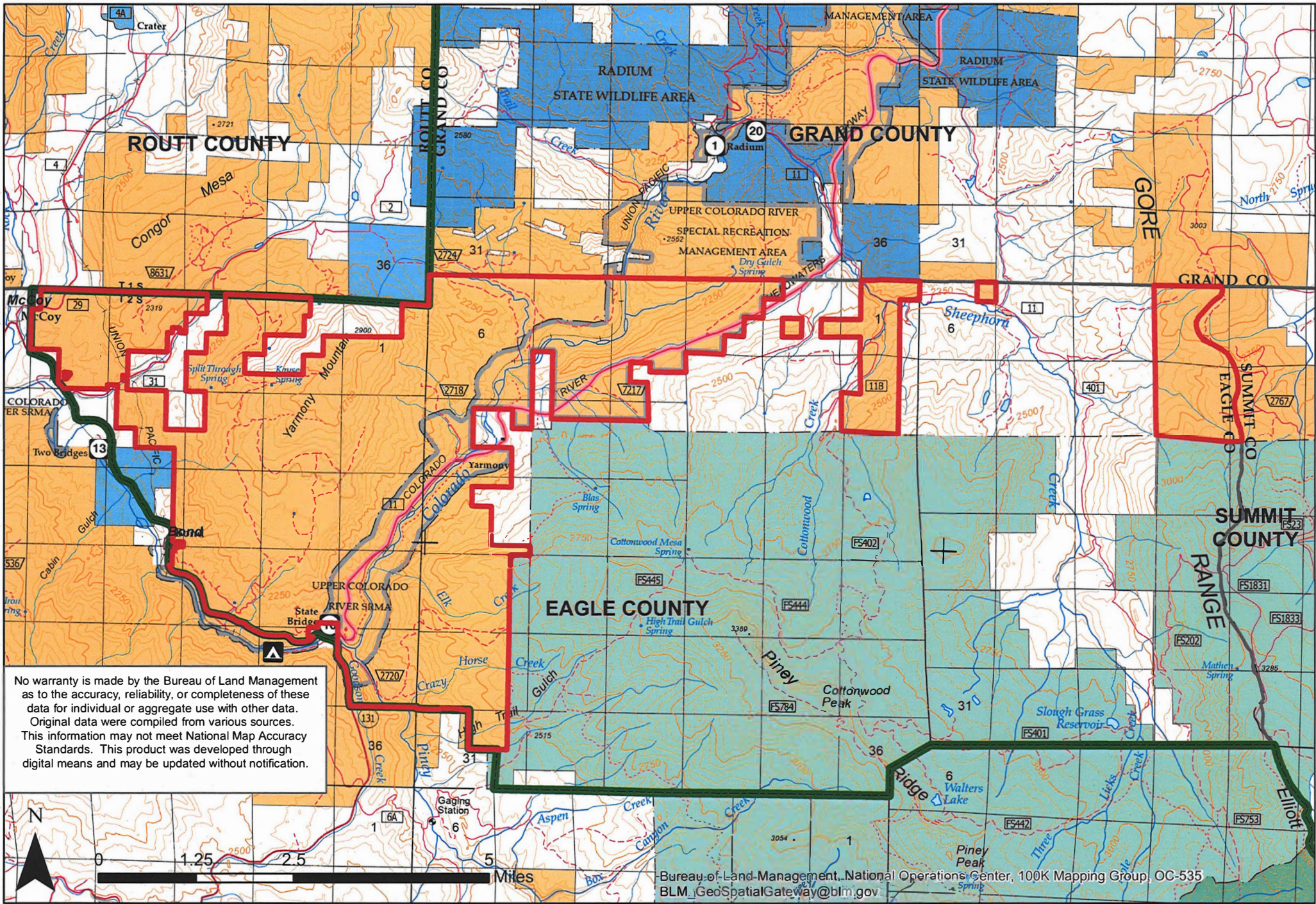
**Any person who knowingly and willfully violates the regulations of Title 43 CFR § 9212.1 shall, upon conviction, be subject to a fine of not more than \$1,000 or to imprisonment of not more than 12 months, or both. Restitution for total suppression or damage costs incurred will be borne by the trespasser.**

This order will be in effect 12:01 AM June 25th, 2021 and will remain in effect from the date signed until rescinded.

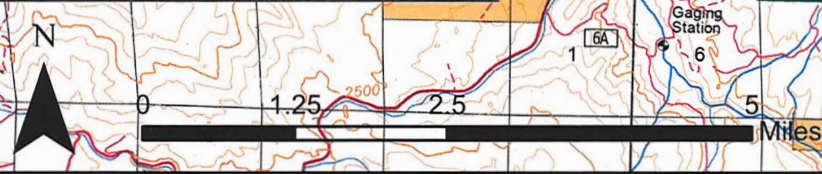
Prepared in Kremmling, Colorado, this 22<sup>nd</sup> day of June, 2021.

A handwritten signature in blue ink, appearing to read "William J. Mills".

William J. Mills  
Field Manager  
Kremmling Field Office  
USDI Bureau of Land Management



No warranty is made by the Bureau of Land Management as to the accuracy, reliability, or completeness of these data for individual or aggregate use with other data. Original data were compiled from various sources. This information may not meet National Map Accuracy Standards. This product was developed through digital means and may be updated without notification.



Bureau of Land Management, National Operations Center, 100K Mapping Group, OC-535  
 BLM\_GeoSpatialGateway@blm.gov

Scale: 1 to 1:100,000



# KFO Fire Prevention Order CON02-21-07

- Fire Restrictions
- Kremling Field Office Boundary

Kremling  
Field Office

U.S. DEPARTMENT OF THE INTERIOR