



U.S. Department of the Interior
Bureau of Land Management



U.S. Department of Agriculture
Mendocino National Forest

Berryessa Snow Mountain National Monument

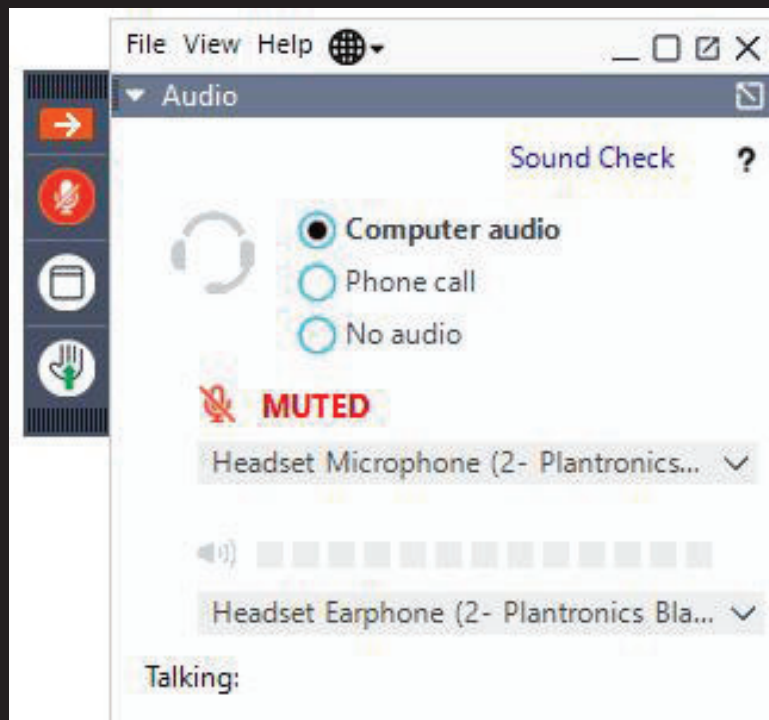
BLM Trails and Travel Management Workshop

April 21, 2021



Audio Options: Computer

Note: All participant microphones will be muted while the speaker is presenting.

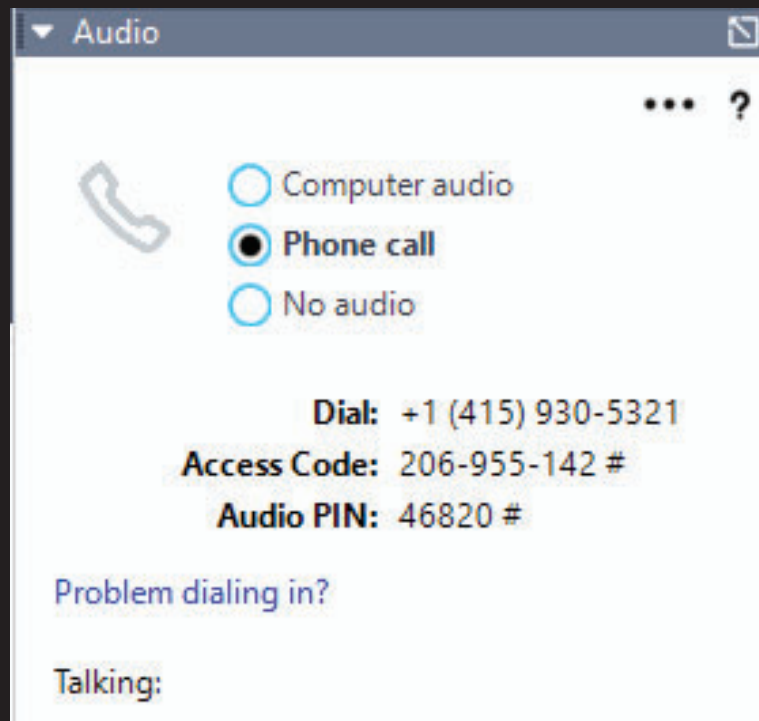


To Use Your Computer's Audio:

When the webinar begins, you will be connected to audio using your computer's microphone and speakers (*i.e.*, Voice Over Internet Protocol or VoIP). A headset is recommended.

Audio Options: Telephone

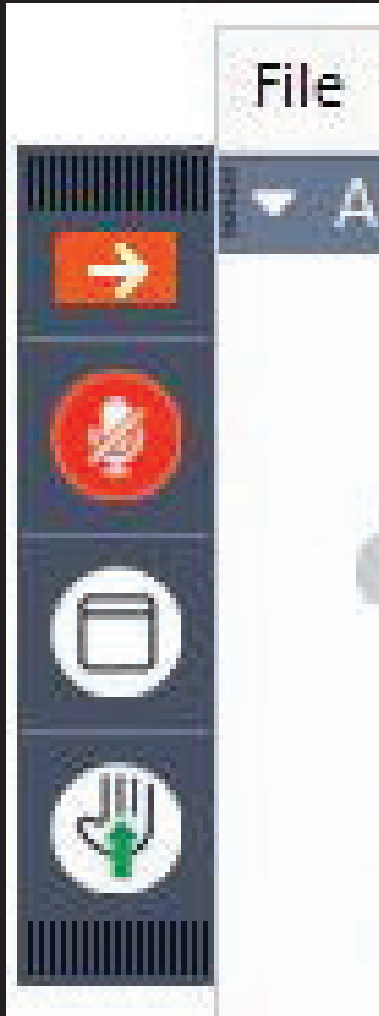
Note: All participant microphones will be muted while the speaker is presenting.



To Use Your Telephone:

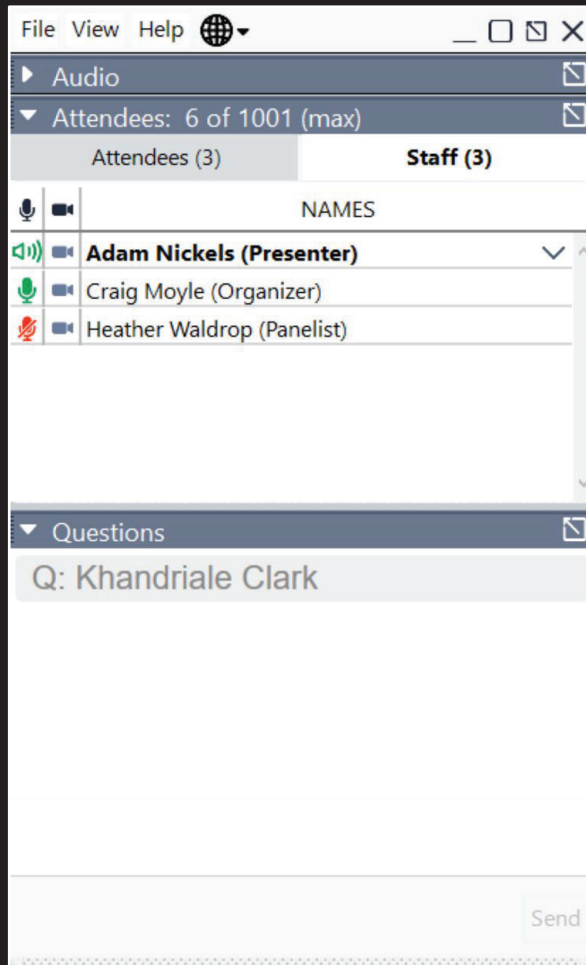
If you prefer to use your phone, you must select "Use Telephone" after joining the webinar and call in using the number provided in the email confirmation received during registration.

How to Engage: Hand Raise and Microphone



- Click the picture of the hand with the green arrow to raise your hand
- We will see your hand is raised and turn on your microphone setting
- After we have turned on your microphone setting, unmute yourself by clicking on the picture of the microphone. The picture will turn green when you are unmuted

How to Engage: Questions Tab



- Open the “Questions” tab in your GoToWebinar dashboard
- Type in your request or your question and click send
- We will read and respond to your question in the order received
- You may also email questions and comments after the workshop to: blm_ca_bsm_nm@blm.gov

The screenshot shows the audio control interface of a GoToWebinar session. At the top, there is a menu with 'File', 'View', and 'Help'. Below the menu, the 'Audio' section is expanded, showing a 'Sound Check' button and three radio button options: 'Computer audio' (selected), 'Phone call', and 'No audio'. A red 'MUTED' indicator is visible. Below this, there are two dropdown menus for audio devices: 'Headset Microphone (2- Plantronics...)' and 'Headset Earphone (2- Plantronics Bla...)', each with a volume slider. A 'Talking:' indicator is present. The 'Attendees' section shows 'Attendees (1)' and 'Staff (1)'. A list of attendees is displayed with the name 'Khandriale Clark (Me)'. A search bar is located below the list. The 'Questions' section is currently empty, with a placeholder text '[Enter a question for staff]' and a 'Send' button. At the bottom, there is a 'Screenshots' section with the text 'Webinar ID: 655-105-555' and the GoToWebinar logo.

Go To Webinar Dashboard Summary

Workshop Presenters

Rebecca Carr Wong
Monument Manager
Berryessa Snow Mountain
National Monument

Serena Baker
Public Affairs Officer
BLM Central California District Office

Sandra McGinnis
Planning and Environmental
Coordinator
BLM California State Office

Paul Uncapher
Principal/Senior Project Manager
Stantec Consulting Services Inc.

Workshop Participants

Are you participating in this workshop as an individual or are you representing a group?

Would you like us to add your group to the Berryessa Snow Mountain National Monument mailing list?

Workshop Agenda

<u>Time</u>	<u>Topic</u>
5:30 p.m.	Webinar Tools, Welcome and Introductions
5:45 p.m.	Agenda and Goals
5:50 p.m.	Berryessa Snow Mountain National Monument Overview
6:05 p.m.	Interactive Polls
6:15 p.m.	BLM Travel Management and NEPA Planning Process
6:35 p.m.	Summary of First Workshop Input
6:50 p.m.	Interactive Map – New Features
7:30 p.m.	Questions and Answers
8:00 p.m.	Adjourn

Travel Management Plan Objectives

Develop a travel network for BLM-managed lands in Berryessa Snow Mountain National Monument that:

- Identifies and provides legal access to public lands
- Fosters the protection and conservation of national monument resources, objects and values in the proclamation
- Provides a diversity of recreational opportunities
- Considers existing uses, route connectivity and user experiences

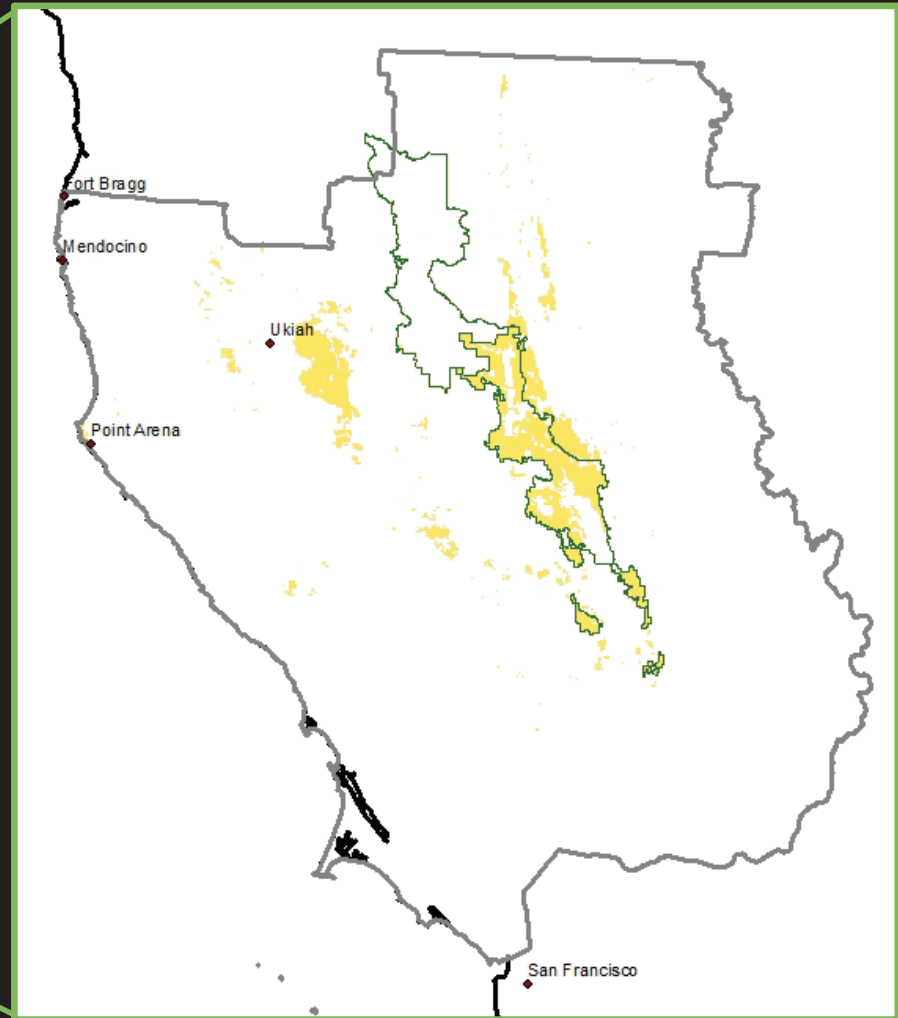
Workshop Objectives

- Engage stakeholders in a trails and travel management discussion about BLM-managed public lands within the Berryessa Snow Mountain National Monument
- Provide an overview of the BLM travel management planning process
- Share information provided by participants at the first workshop
- Offer an opportunity for participants to share additional information about uses, existing trails and travel routes

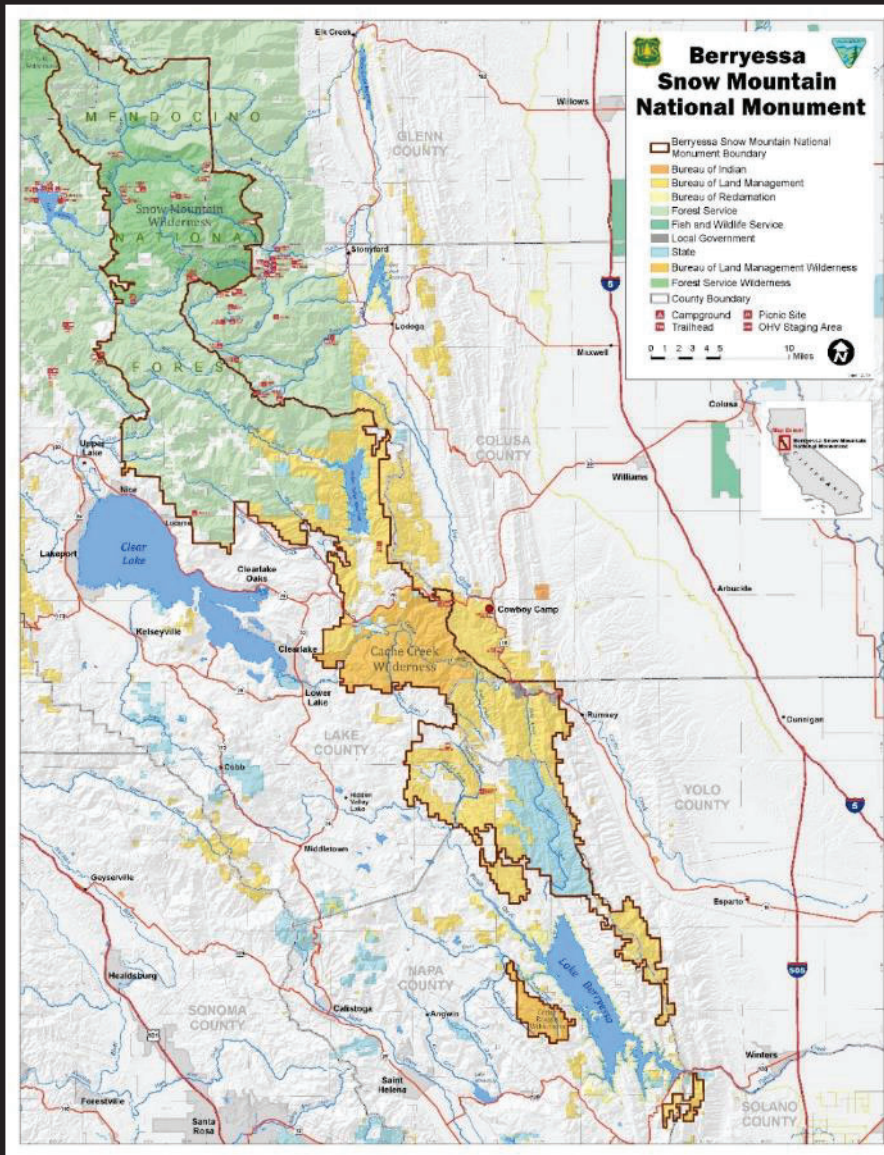
BLM Ukiah Field Office



BLM California Field Offices



Public Lands and National Monuments Managed by the BLM Ukiah Field Office



“The protection of the Berryessa Snow Mountain area will preserve its prehistoric and historic legacy and maintain its diverse array of scientific resources, ensuring that the prehistoric, historic, and scientific values remain for the benefit of all Americans.”

- Presidential Proclamation
July 10, 2015



Wilderness Areas:

- Cache Creek
- Cedar Roughs
- Snow Mountain

Areas of Critical Environmental Concern:

- Cache Creek
- Cedar Roughs Natural Area
- Indian Valley Brodiaea Research Natural Area
- Knoxville
- Northern California Chaparral Research Area

Berryessa Snow Mountain National Monument

co-managed by
Bureau of Land Management (BLM)
United States Forest Service (USFS)

Interagency Monument Management Team

BLM Central California District

- Ukiah Field Office

USFS Mendocino National Forest

- Upper Lake District
- Grindstone District



Mendocino National Forest Motor Vehicle Use Maps

<https://www.fs.usda.gov/main/mendocino/maps-pubs>

The screenshot shows the Mendocino National Forest website's 'Maps & Publications' page. The header includes the USDA Forest Service logo and the Mendocino National Forest name. The navigation menu on the left lists various site map categories. The main content area is divided into several sections:

- Maps & Publications:** A section explaining that the US Forest Service provides various publications and maps, including brochures, maps, and Opportunity Guides (ROGs). It lists examples like National Forest Visitor Maps, mobile compatible maps from Avenza Maps, and USGS Topographic Maps.
- Forest Service Publications:** A list of publications including Research & Development, Treesearch, Southern Research Station, Pacific Southwest Research Station, and National FS Publications.
- OHV Maps:** A list of Off-Highway Vehicle (OHV) maps for the Stonyford, Upper Lake North, and Upper Lake South areas.
- Highlights:** A section titled 'Maps for mobile devices' featuring a red location pin icon and a link to download the app: [SM.FS.R5DigMaps@usda.gov](https://www.fs.usda.gov/main/mendocino/maps-pubs).
- Motor Vehicle Use Maps (MVUM):** A section explaining that the Motor Vehicle Use Map displays National Forest System routes (roads and trails) or areas designated open to motorized travel. It also lists links to access MVUMs.
- Off-Highway Vehicle Maps (OHV):** A section listing links to OHV maps for the Stonyford, Upper Lake North, and Upper Lake South areas.

The sidebar on the left provides contact information for the Mendocino National Forest, including the address (825 N. Humboldt Ave., Willows, CA 95988), phone numbers for the Upper Lake Ranger District, Stonyford Work Center, Red Bluff Recreation Area, and Covelo Ranger District. It also includes social media icons for Blog, Facebook, Twitter, YouTube, and LinkedIn, and a 'Contact Us' link.

An official website of the United States government [Here's how you know](#)

U.S. DEPARTMENT OF THE INTERIOR
BUREAU OF LAND MANAGEMENT

Site Search

[HOME](#)
[VISIT](#)
[ABOUT](#)
[LEARN](#)
[SERVICES](#)
[GET INVOLVED](#)
[PROGRAMS](#)
[STATES](#)
[CORONAVIRUS UPDATES](#)

Home > California State Office > Central California District Office > Ukiah Field Office

CENTRAL CALIFORNIA DISTRICT OFFICE


[BAKERSFIELD FIELD OFFICE](#)
[BISHOP FIELD OFFICE](#)
[CENTRAL COAST FIELD OFFICE](#)
[MOTHER LODE FIELD OFFICE](#)
[UKIAH FIELD OFFICE](#)

FIRE CLOSURES AND FIRE RESTRICTIONS

Click here for important information regarding fire closures, fire restrictions and target shooting restrictions for BLM California.

COVID-19 UPDATES

Click here for up-to-date information on changes to closures, facilities and services in California in response to coronavirus (COVID-19)



UKIAH FIELD OFFICE

The Ukiah Field Office boundary includes approximately 270,000 acres of BLM-managed surface acres and 214,000 additional subsurface acres (mineral estate) in northern California.

The geographic area includes all BLM-managed public lands within the counties of Colusa, Glenn, Lake, Napa, Marin, Mendocino (south of the City of Willits), Solano, Sonoma and Yolo. Approximately 1.5 million people live within this region.

[Click here to explore an interactive map of the Ukiah Field Office.](#)
Field Office Boundaries are marked in blue and different data layers are available in the top right 'Layer List'. Some characteristics will become visible as the map is zoomed in.

CONTACT

Mailing Address:
2550 North State Street, Suite 2
Ukiah, CA 95482

Email: BLM_CA_Web_UK@blm.gov

Phone: 707-468-4000
Fax: 707-468-4027
TTY/Federal Relay System: 1-800-877-8339

Hours:
8:30 am-4:30 pm M-F virtual only - via email or phone. The office is temporarily closed to in-person visits.



BERRYESSA SNOW MOUNTAIN NATIONAL MONUMENT

BERRYESSA SNOW MOUNTAIN NATIONAL MONUMENT NEWS

2021

- BLM seeking input on Berryessa Snow Mountain National Monument trails- April 2021
 - BLM Trails and Travel Management Workshop Flyer- April 21, 2021
- PARTIAL TERMINATION OF CLOSURE ORDER for BLM managed lands within and adjacent to Berryessa Snow Mountain National Monument - February 2021
- BLM to hold Berryessa Snow Mountain National Monument public workshop - January 2021
- Trails and Travel Management Workshops
 - Workshop Flier
 - Berryessa Snow Mountain National Monument Related Websites
 - Slides from Trails and Travel Management Workshop
 - Trails and Travel Management Workshop Interactive Map
 - Instructions for Adding a Point to the Interactive Web Map

2020

- BLM reopens portions of the Knoxville Management Area in Napa and Lake counties - November 2020
- The Bureau of Land Management to reopen Cache Creek Natural Area
- Partial Termination of Emergency Closure Order
- Emergency Closure Order - August 2020 - Order and Map.
- Berryessa Snow Mountain National Monument Annual Manager's Report -Fiscal Year 2019
- Berryessa Snow Mountain National Monument Agents of Discovery Poster

NAVIGATION

[RETURN TO BERRYESSA SNOW MOUNTAIN NATIONAL MONUMENT HOME PAGE](#) »

QUICK FACTS

Proclamation
Created: July 10, 2015
Size: 330,780 acres of public land
 Bureau of Land Management acres: 133,566 U.S. Forest Service acres: 197,214

QUICK LINKS

[BERRYESSA SNOW MOUNTAIN NATIONAL MONUMENT, U.S. FOREST SERVICE](#) »

[MONUMENT NEWS](#) »
[UKIAH FIELD OFFICE](#) »

PLANNING

[BLM EPLANNING](#) »
[MENDOCINO NATIONAL FOREST MONUMENT PLANNING](#) »
[U.S. FOREST SERVICE SCHEDULE OF PROPOSED ACTIONS \(SOPA\)](#) »

Information from this workshop will be available at
www.blm.gov/berryessa-snow-mountain

Poll Question:

1. What non-mechanized recreational activities do you participate in on BLM-managed public lands within the national monument?

- a. Hiking/Backpacking
- b. Equestrian
- c. River Running/Swimming
- d. Wildlife Viewing
- e. Camping (tents)

Poll Question:

2. What non-motorized recreational activities do you participate in on BLM-managed public lands within the national monument?

- a. Bicycling
- b. Hunting/Fishing
- c. Target Shooting
- d. Photography

Poll Question:

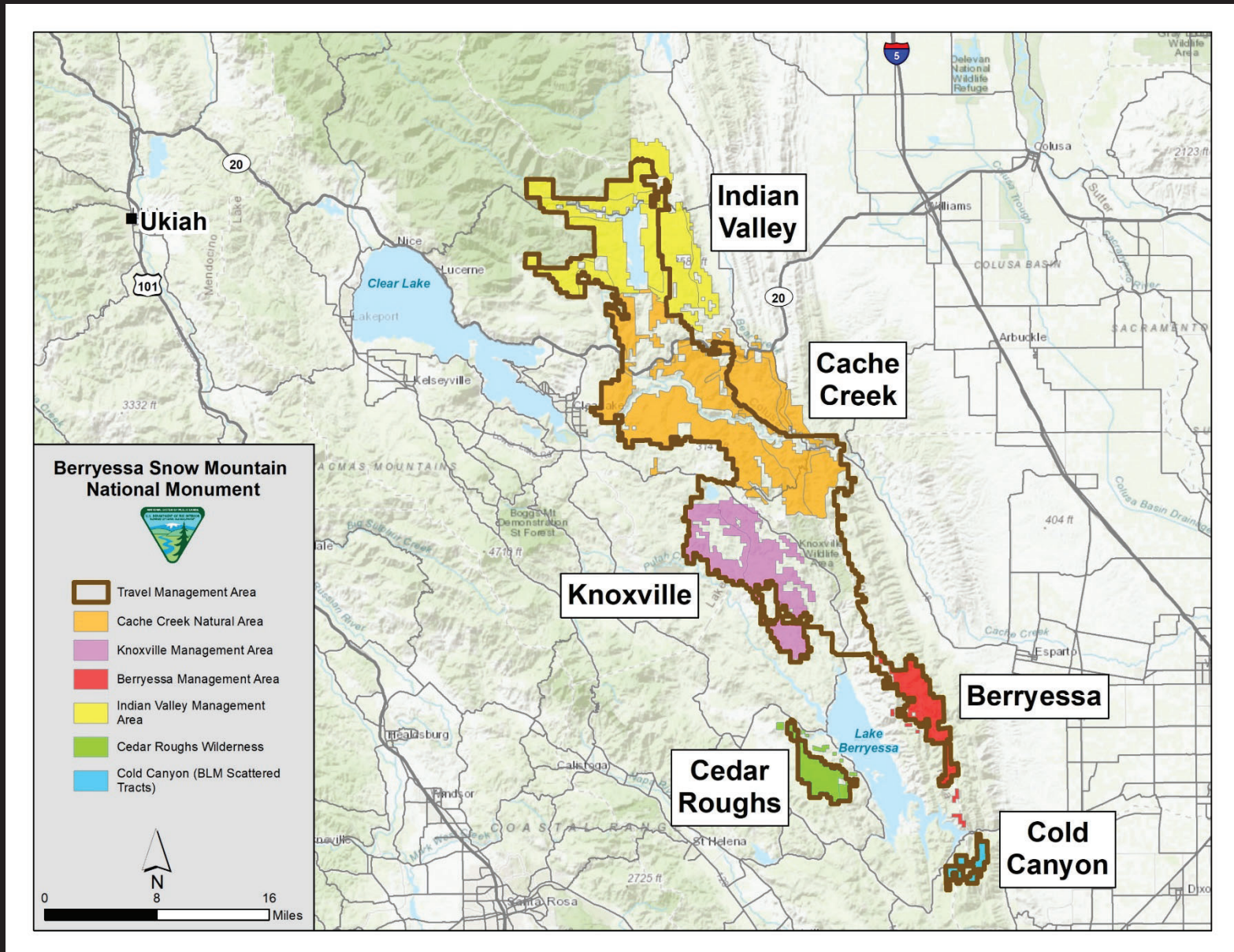
3. What motorized recreational activities do you participate in on BLM-managed public lands within the national monument?

- a. Off-Highway Vehicles
- b. Scenic Driving
- c. Camping (motorhomes)

Poll Question:

4. What is your primary type of travel on BLM-managed public lands within the national monument?
- a. Hike
 - b. Equestrian
 - c. Single Track < 50" (Examples: Bicycle, eBike, Motorcycle)
 - d. Double Track > 50" (Examples: OHV, 4X4)
 - e. 2WD Vehicle

BLM Ukiah Field Office Resource Management Areas



Poll Question:

5. Where do you recreate most often?
 - a. Berryessa Management Area/Scattered Tracts (Cold Canyon)
 - b. Cache Creek Natural Area
 - c. Cedar Roughs Wilderness Area
 - d. Indian Valley Management Area
 - e. Knoxville Management Area

Poll Question:

6. Where is your favorite route/road/trail located?
 - a. Berryessa Management Area/Scattered Tracts (Cold Canyon)
 - b. Cache Creek Natural Area
 - c. Cedar Roughts Wilderness Area
 - d. Indian Valley Management Area
 - e. Knoxville Management Area

Poll Questions:

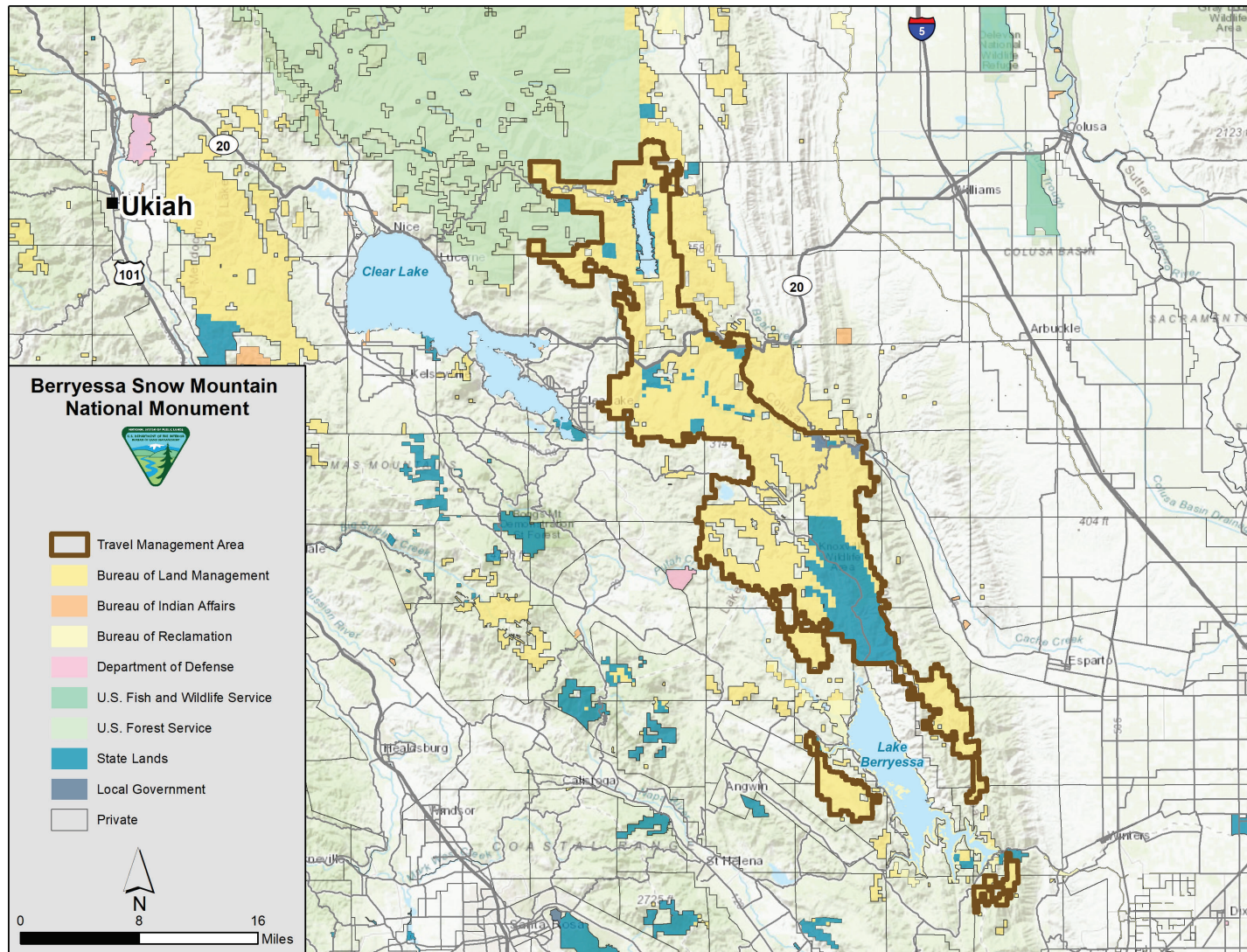
7. How familiar are you with BLM's Travel Management planning process?

- a. Very Familiar
- b. Somewhat familiar
- c. Not familiar

8. How familiar are you with BLM's National Environmental Policy Act (NEPA) planning process?

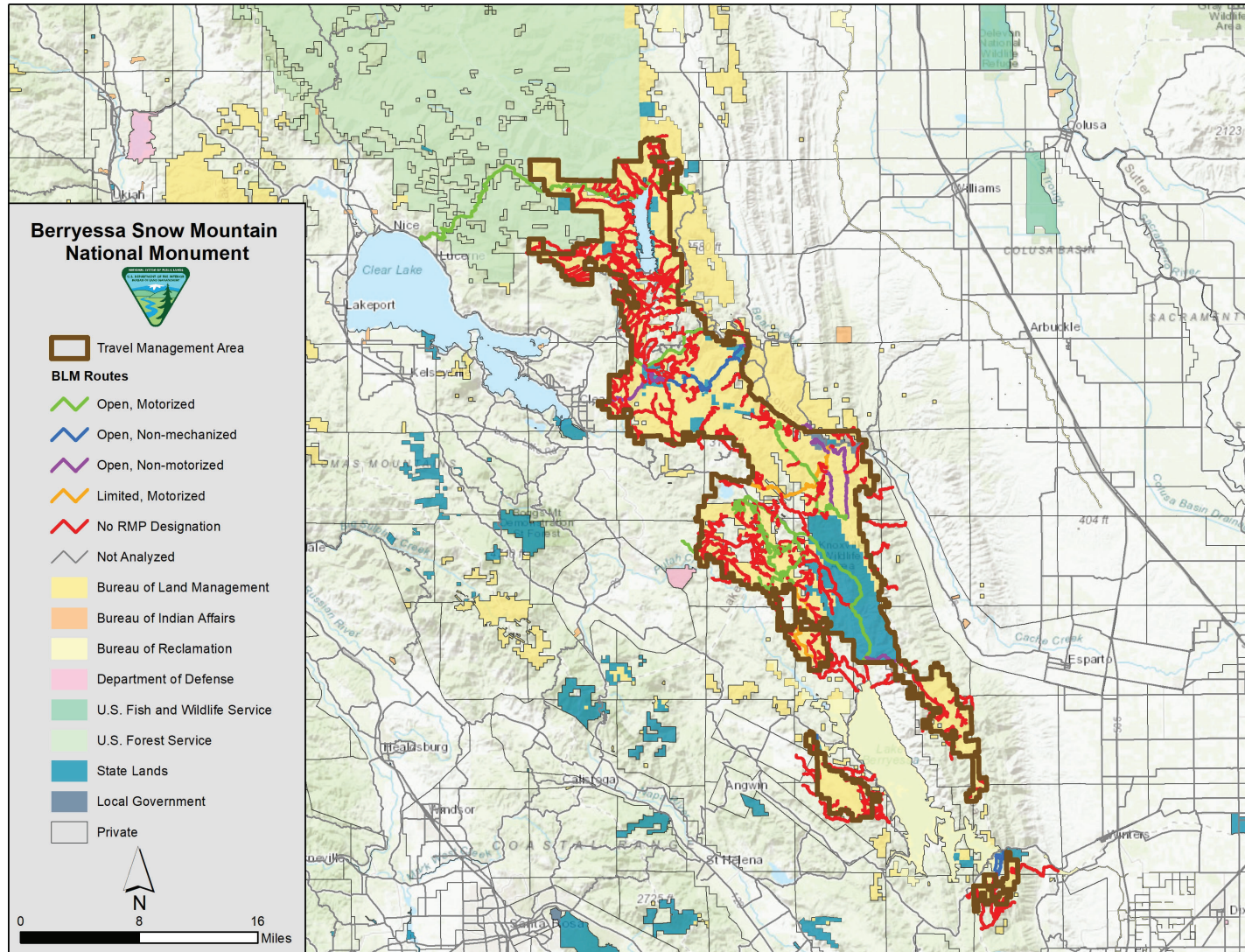
- a. Very Familiar
- b. Somewhat familiar
- c. Not familiar

Travel Management Area





Travel Management Inventory of Known Routes



Route Designations

Route designations are categorized by three basic descriptors:

- Motorized
- Non-motorized
- Non-mechanized

Route designations are further categorized by three additional sub-descriptors:

- Open
- Limited
- Closed

Information Gathering:

- Public Workshop - 2/28/2021
- Public Workshop - 4/21/2021

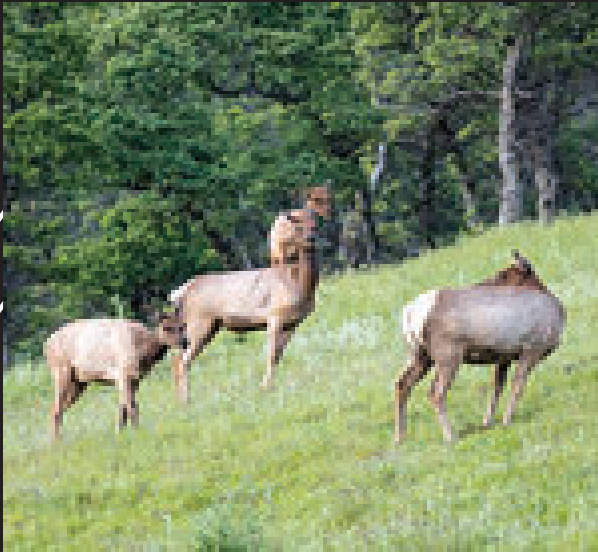
Travel Management Plan Development:

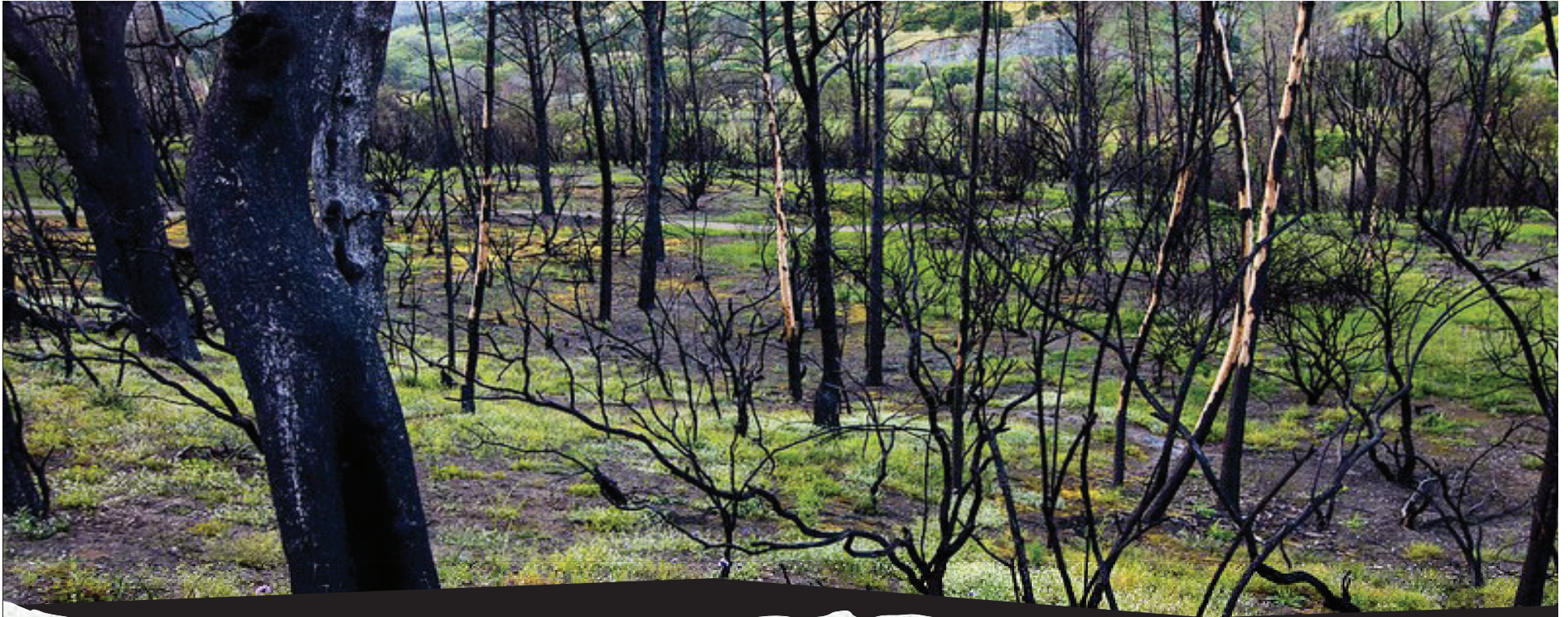
- Government Consultations – Spring/Fall 2021
- Public Scoping – Summer 2021
- Environmental Assessment – Fall 2021

Implementation not anticipated before 2022

National Environmental Policy Act (NEPA) - a decision making model for everyone:

- What is the goal? (Purpose and Need)
- What are ways to achieve goals? (Alternatives)
- Consider trade-offs: resource use and protection (Impacts)
- Be transparent and plain spoken
- Involve the public
- Make informed decisions





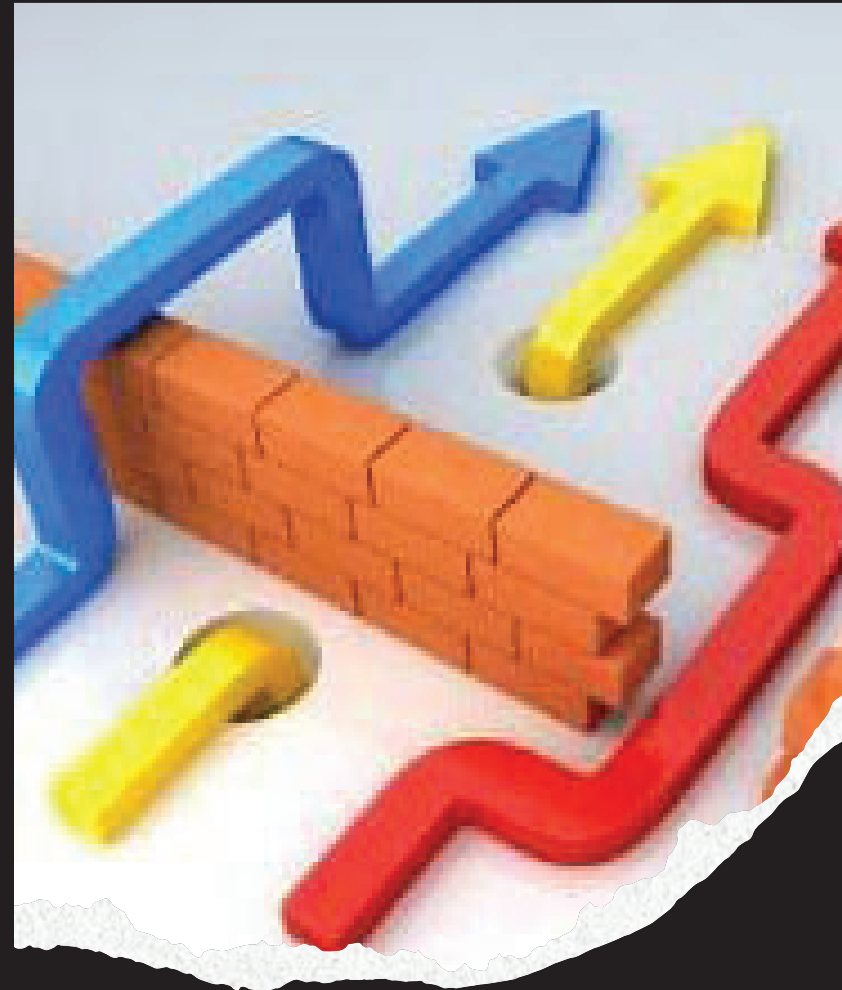
Issue-based Analysis

- Identify issues through scoping
- Be specific. Rather than “fire impacts,” frame issue as “impact of recent wildfire on dispersed camping in XXX area”
- The BLM will only address issues or resources that are potentially affected by at least one of the alternatives

Alternatives

How to build a better mousetrap:

- NEPA requires that we strive for a range of alternatives
- Alternatives must be issue-driven
- Alternatives must have key differences
- Each alternative is selectable





Environmental Trade-offs

- Every alternative has impacts
- Each alternative should have substantially different impacts for at least one resource
- Which impacts are most acceptable?

Opportunities for Public Engagement

- Public Workshops (January & April)
www.blm.gov/berryessa-snow-mountain
- Public Scoping (30 days, Summer 2021)
- Public Comment on the proposed plan (30 days)

Native American Tribes will be offered additional opportunities for government-to-government consultations.

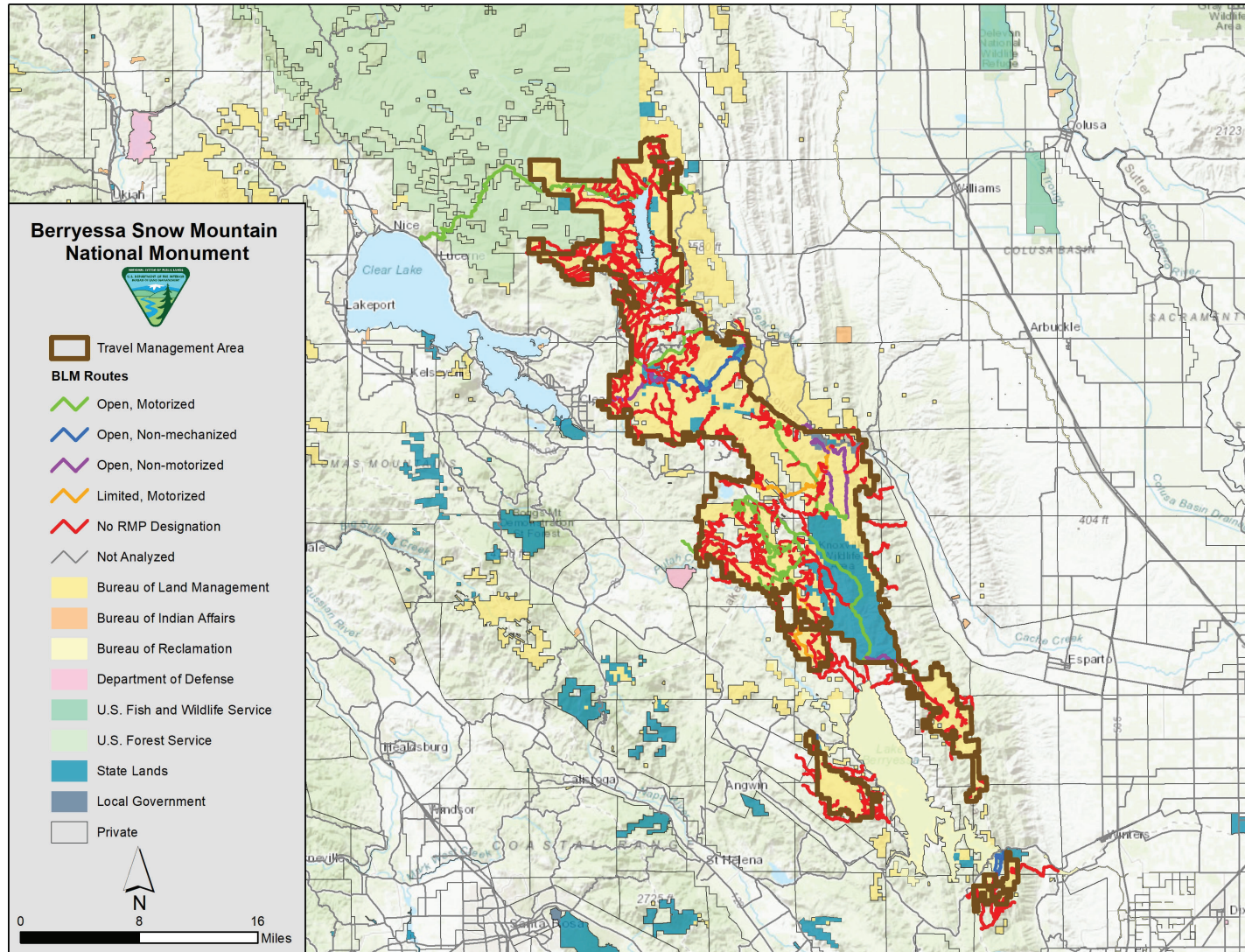
Additional consultations with state and federal agencies will be conducted in compliance with legislative and policy requirements.



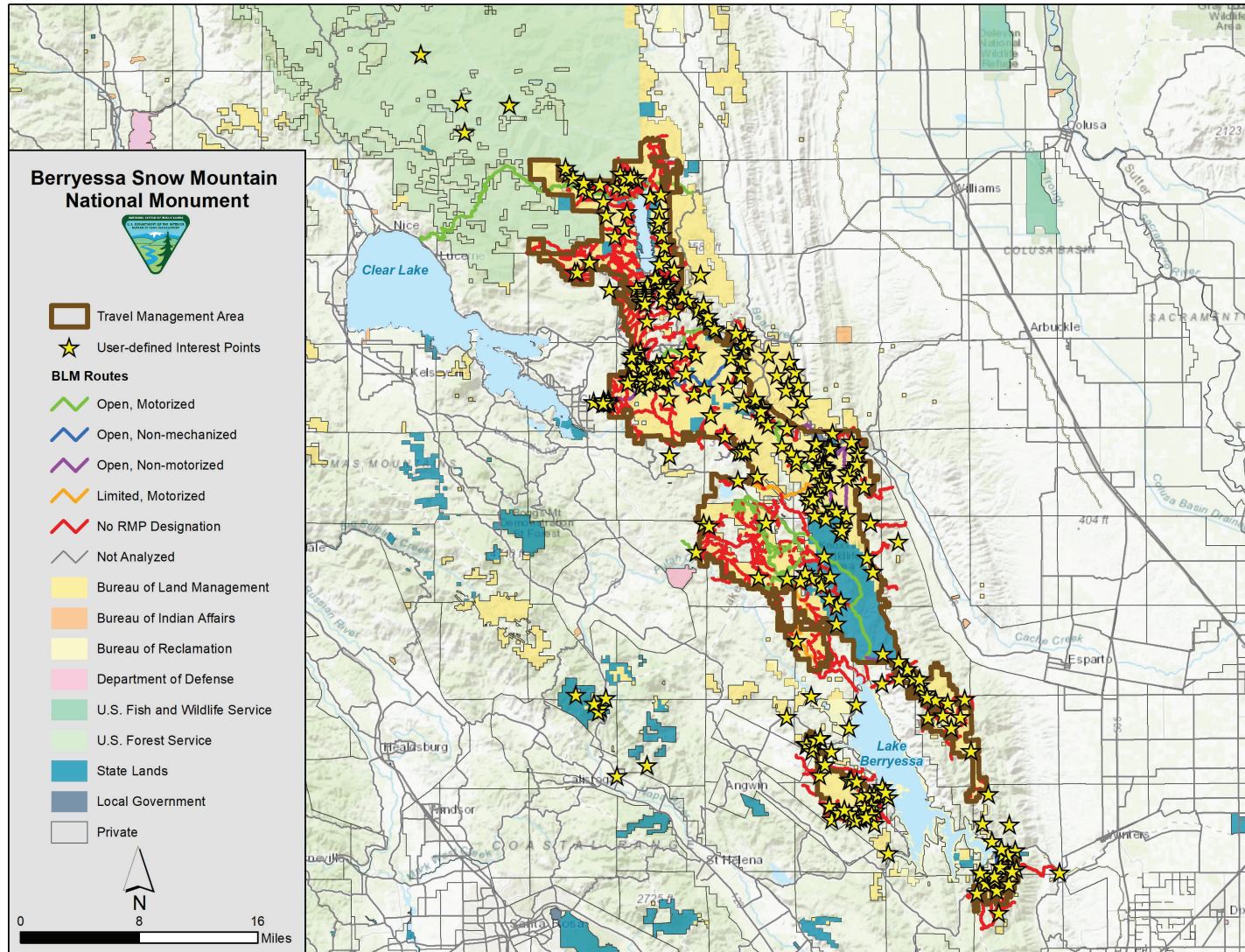
Effective Public Comments

- What should be our objectives?
Where should we designate routes?
Where should we close routes?
- Are there additional alternatives that should be considered?
- Is the affected environment characterized correctly? Are there additional resources to consider?
- Are there additional impacts not already identified, or that have been mischaracterized?

Travel Management Inventory of Known Routes

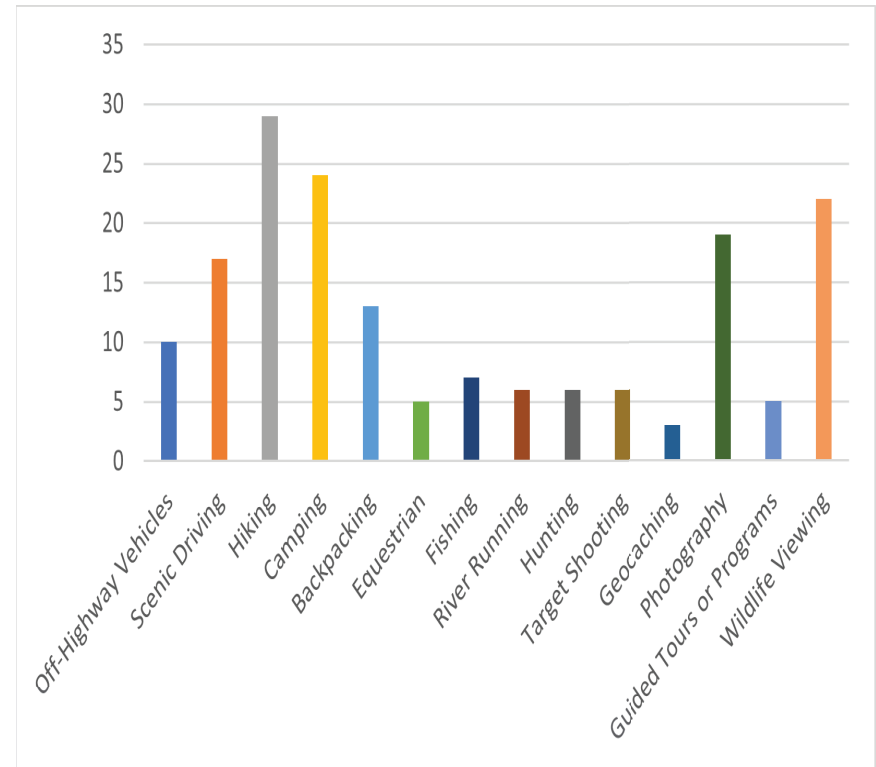


Travel Management Inventory of Known Routes



What are your recreational activities on BLM-managed public lands within the national monument?

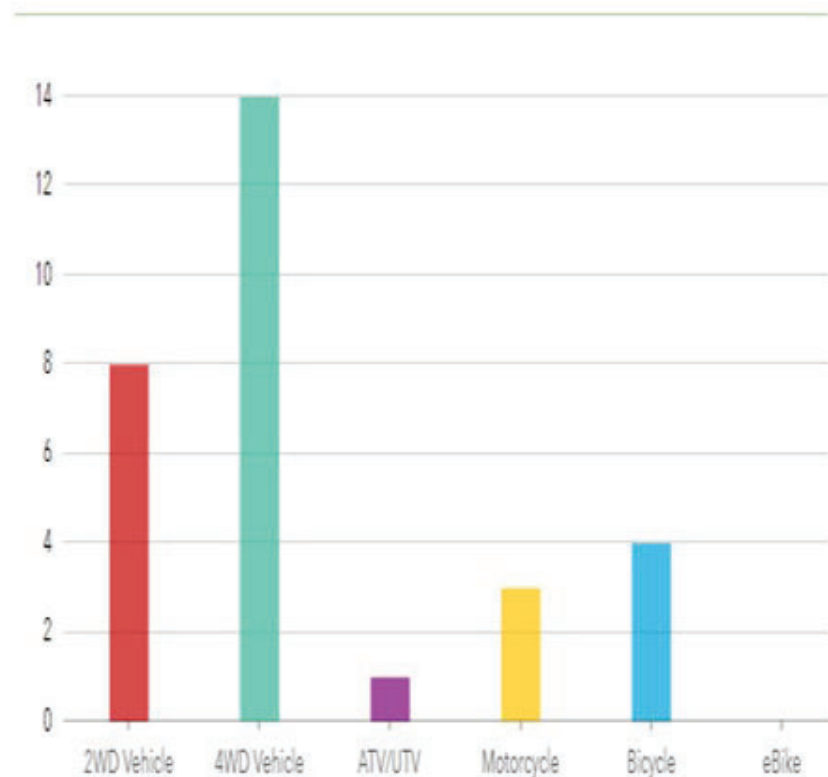
Answers	Count	Percentage
Off-Highway Vehicles	10	28.57%
Scenic Driving	17	48.57%
Hiking	29	82.86%
Camping	24	68.57%
Backpacking	13	37.14%
Equestrian	5	14.29%
Fishing	7	20.00%
River Running	6	17.14%
Hunting	6	17.14%
Target Shooting	6	17.14%
Geocaching	3	8.57%
Photography	19	54.29%
Guided Tours or Programs	5	14.29%
Wildlife Viewing	22	62.86%



What is your primary type of travel on BLM-managed public lands within the national monument?

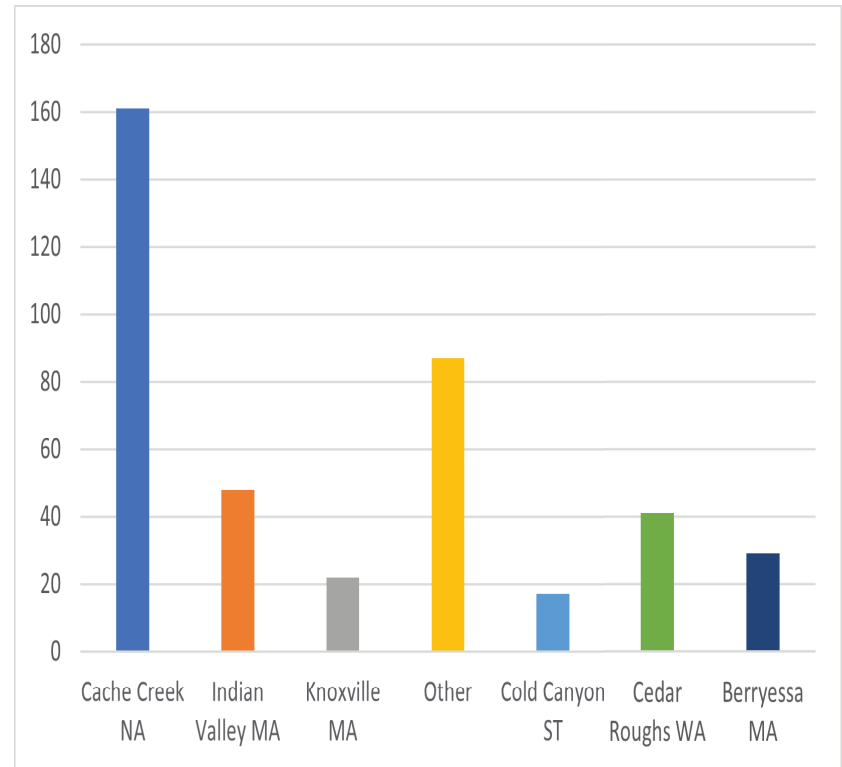
Type	Count	Percentage
2WD Vehicle	8	22.86%
4WD Vehicle	14	40.00%
ATV/UTV	1	2.86%
Motorcycle	3	8.57%
Bicycle	4	11.43%
eBike	0	0

Answered: 30 Skipped: 5



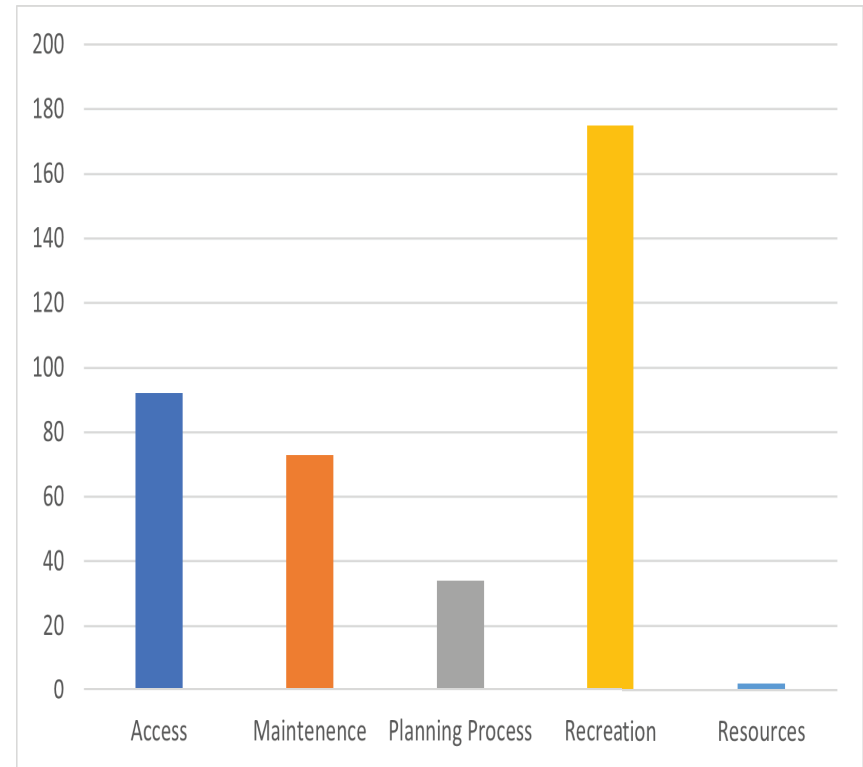
Which management area are you most interested in?

Management Area	Count	Percentage
Cache Creek NA	161	40.55%
Indian Valley MA	48	12.09%
Knoxville MA	22	5.54%
Other	87	21.91%
Cold Canyon ST	17	4.28%
Cedar Roughs WA	41	10.33%
Berryessa MA	29	7.30%



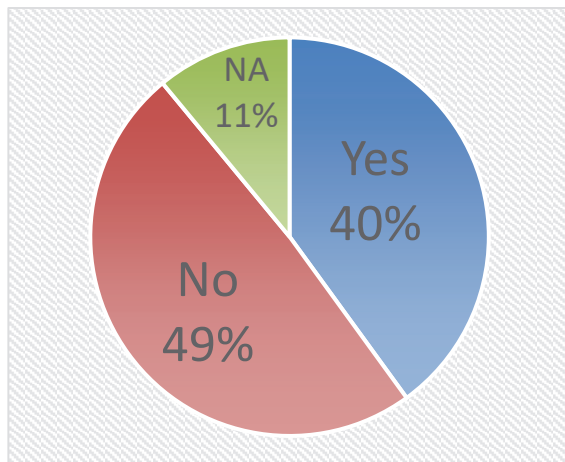
What types of information were provided on the map?

Type	Count	Percentage
Access	92	23.17%
Maintenance	73	18.39%
Planning Process	34	8.56%
Recreation	175	44.08%
Resources	2	0.50%



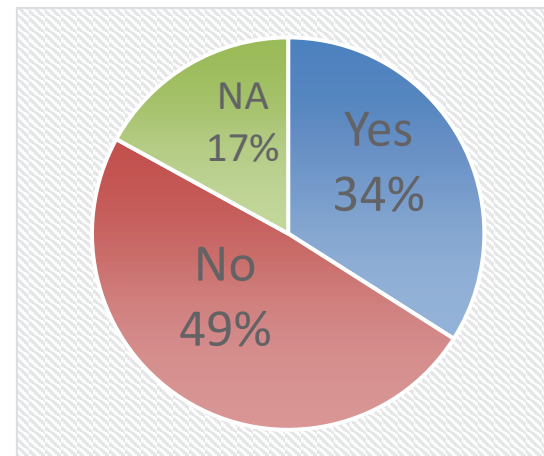
Yes/No Questions

Are there places you like to go, but vehicle access is not available due to gates, fencing, signage or other restrictions?



Yes: 40%
No: 49%
NA: 11%

Are there routes that are currently open that you believe should be closed or restricted to protect sensitive resources?



Yes: 34%
No: 49%
NA: 17%

What we
heard in the
January 28
workshop

- **Trail maintenance**
- **Public access**
- **Parking and staging areas**
- **Trail marking and signs**
- **Trail connectivity**
- **Type-specific trail designs**

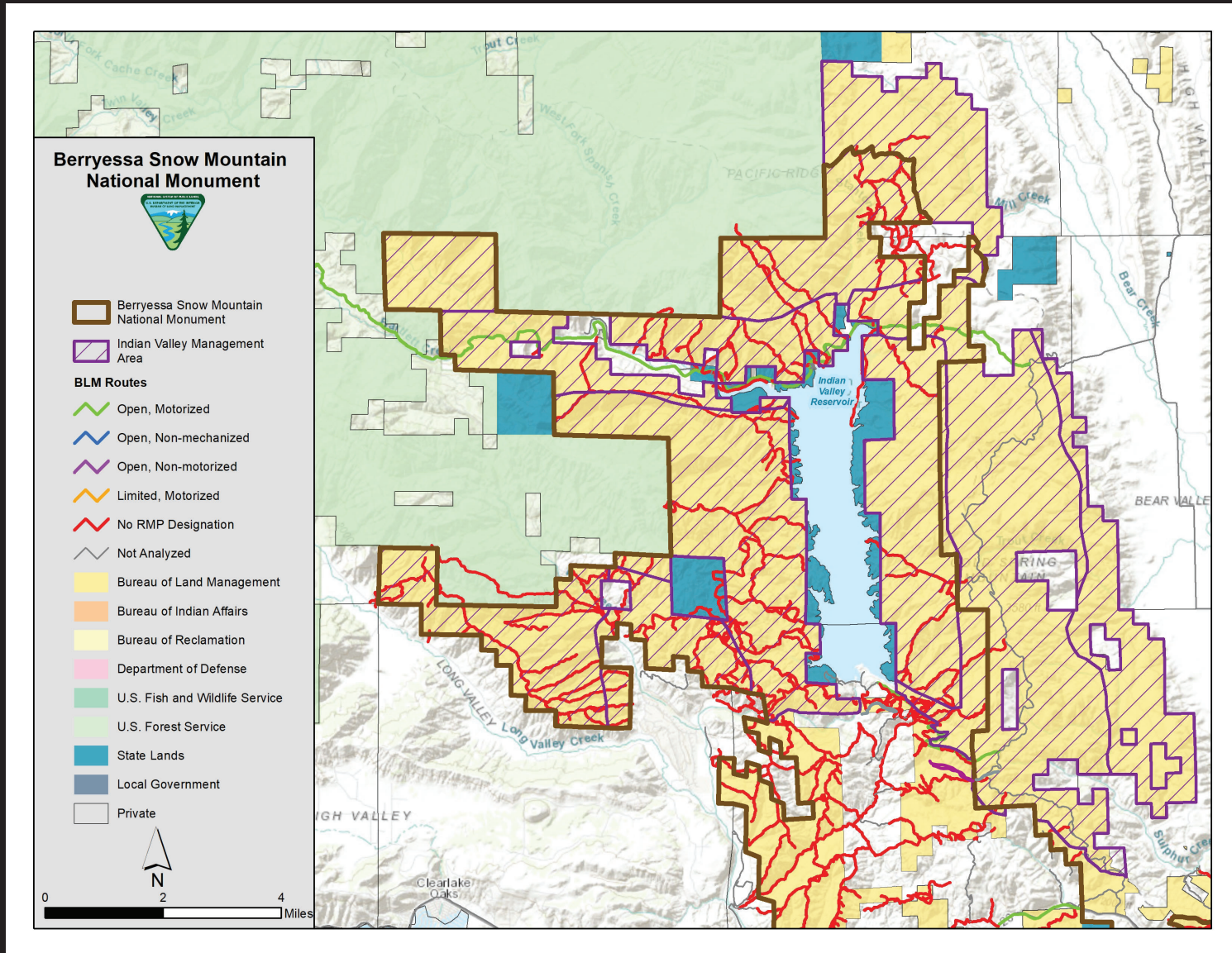
Interactive Web Map

Optional interactive web map tool that allows real-time visualization of data and information, as well as the capture of user-defined interest points.

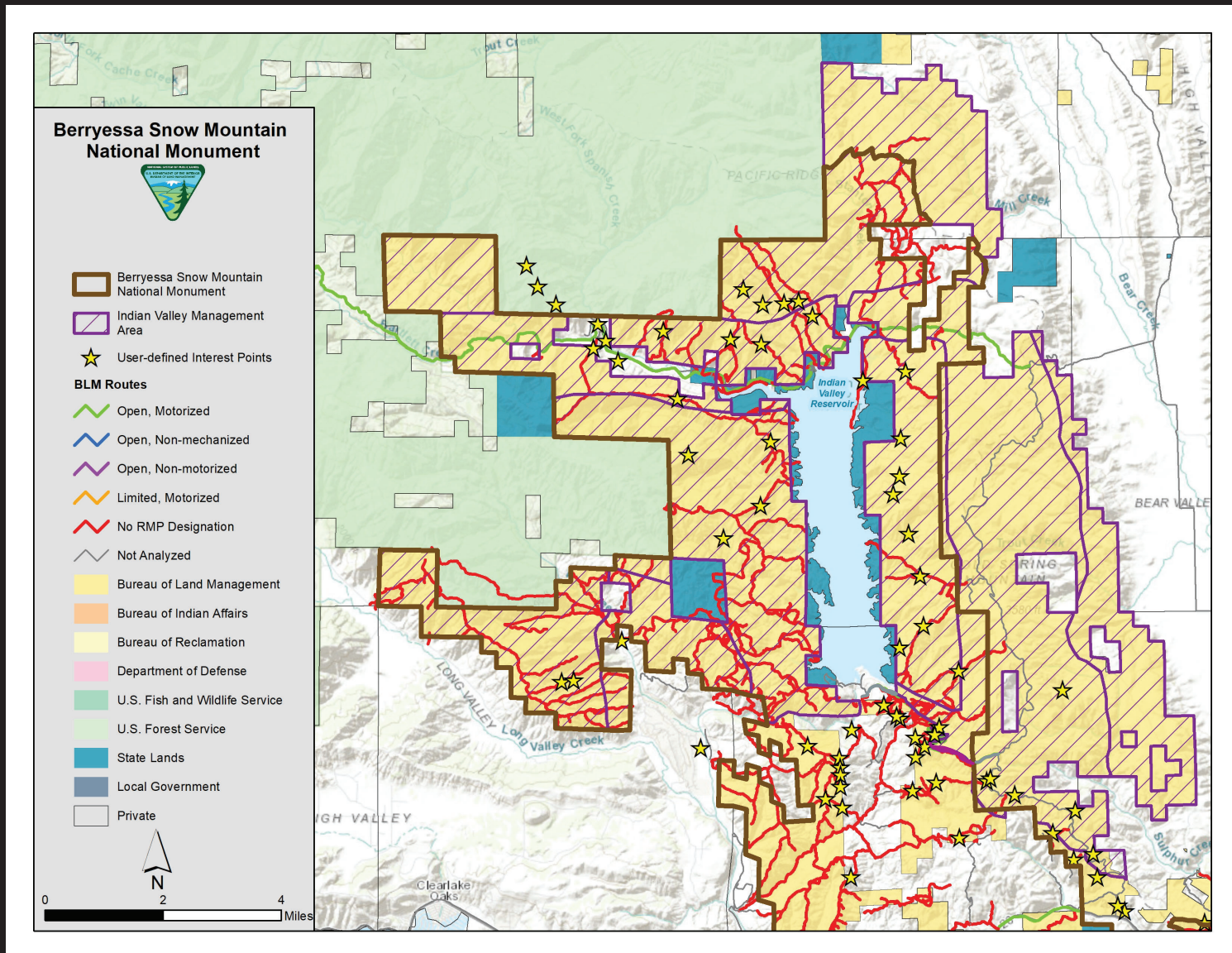
Some browsers interface better than others. If the map does not work, try another browser (*i.e.*, Microsoft Edge, Google Chrome, Safari, etc.).

The webmap and instructions are available at:
<https://www.blm.gov/programs/national-conservation-lands/california/berryessa-snow-mountain-national-monument/news>.

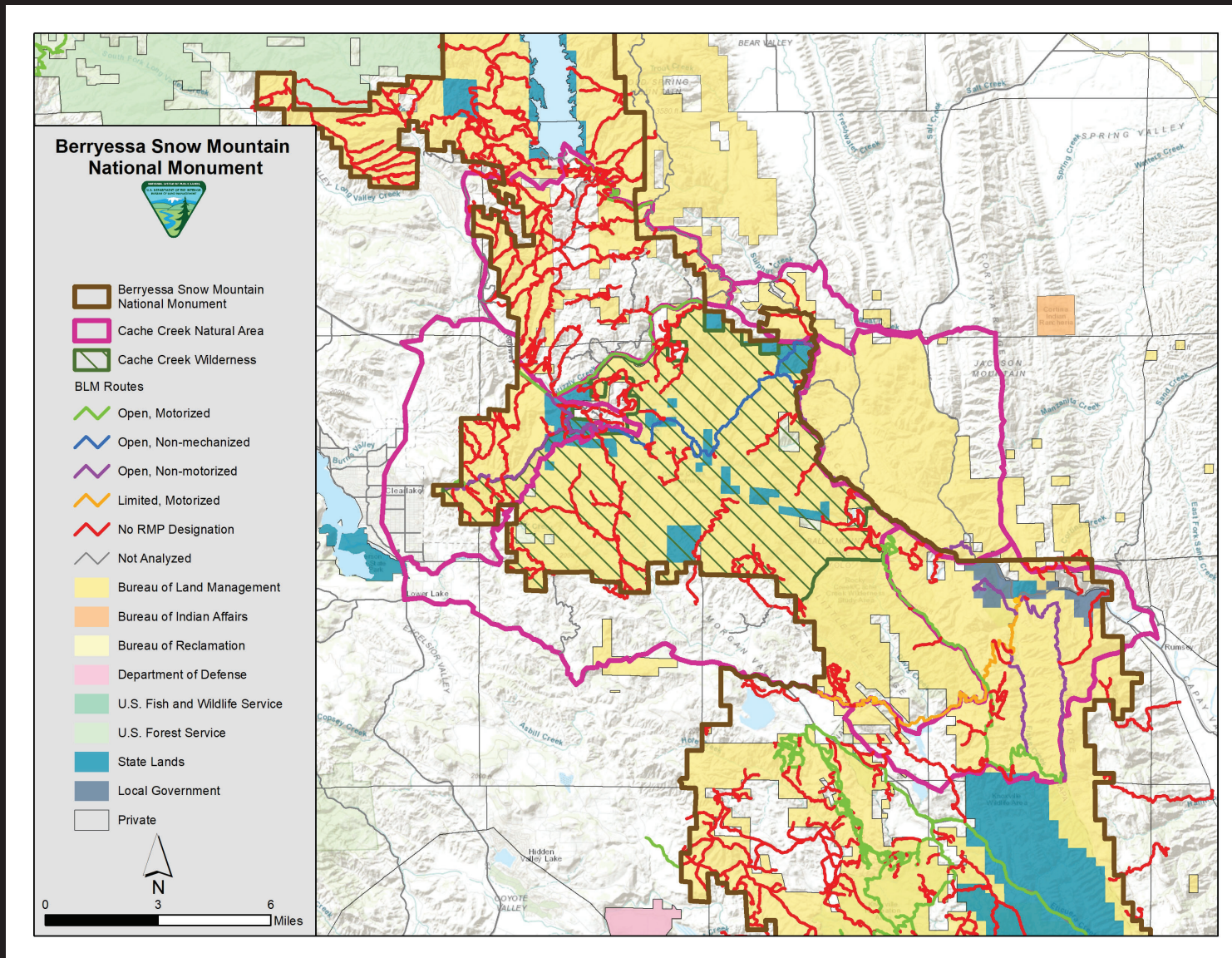
Indian Valley Management Area



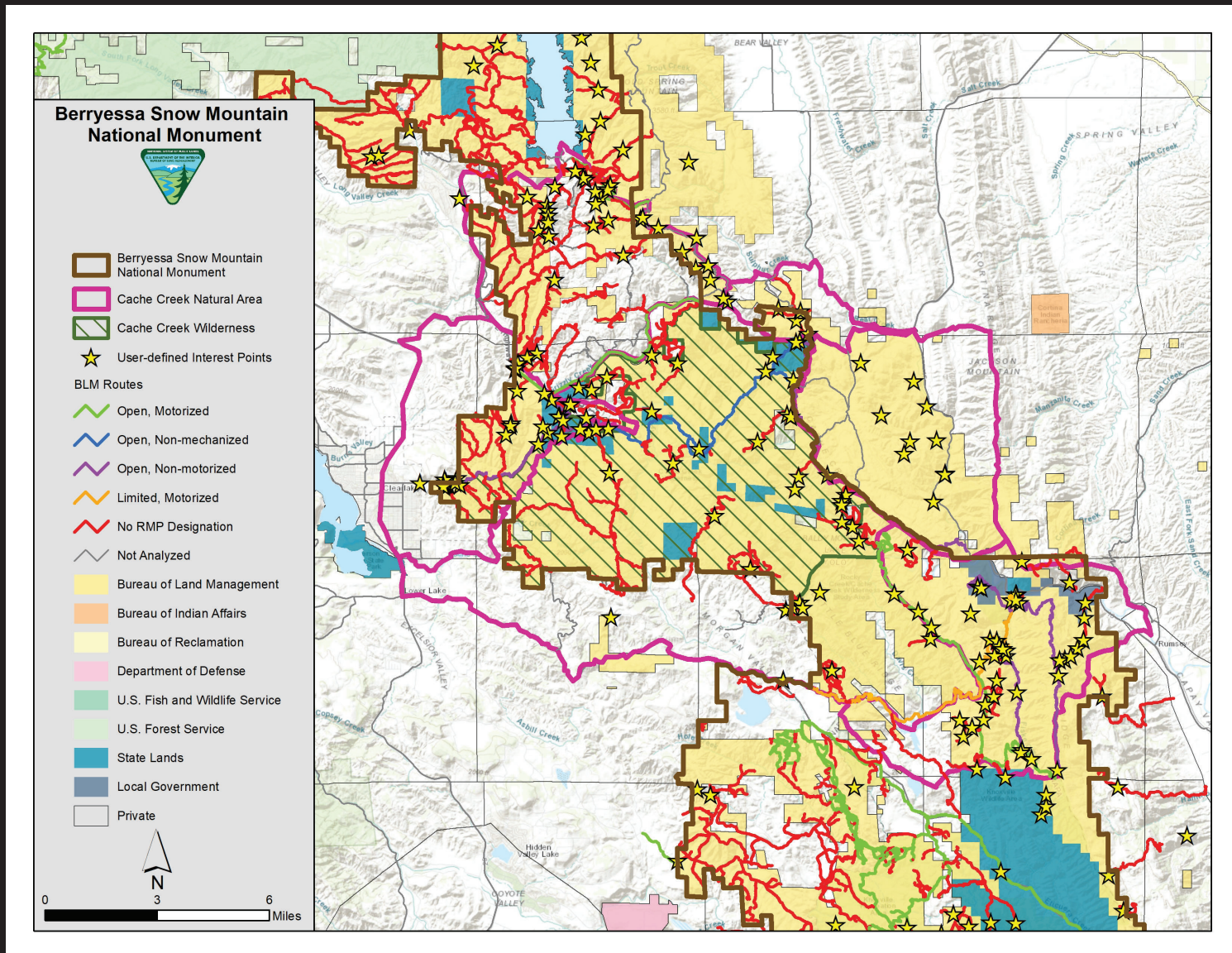
Indian Valley Management Area



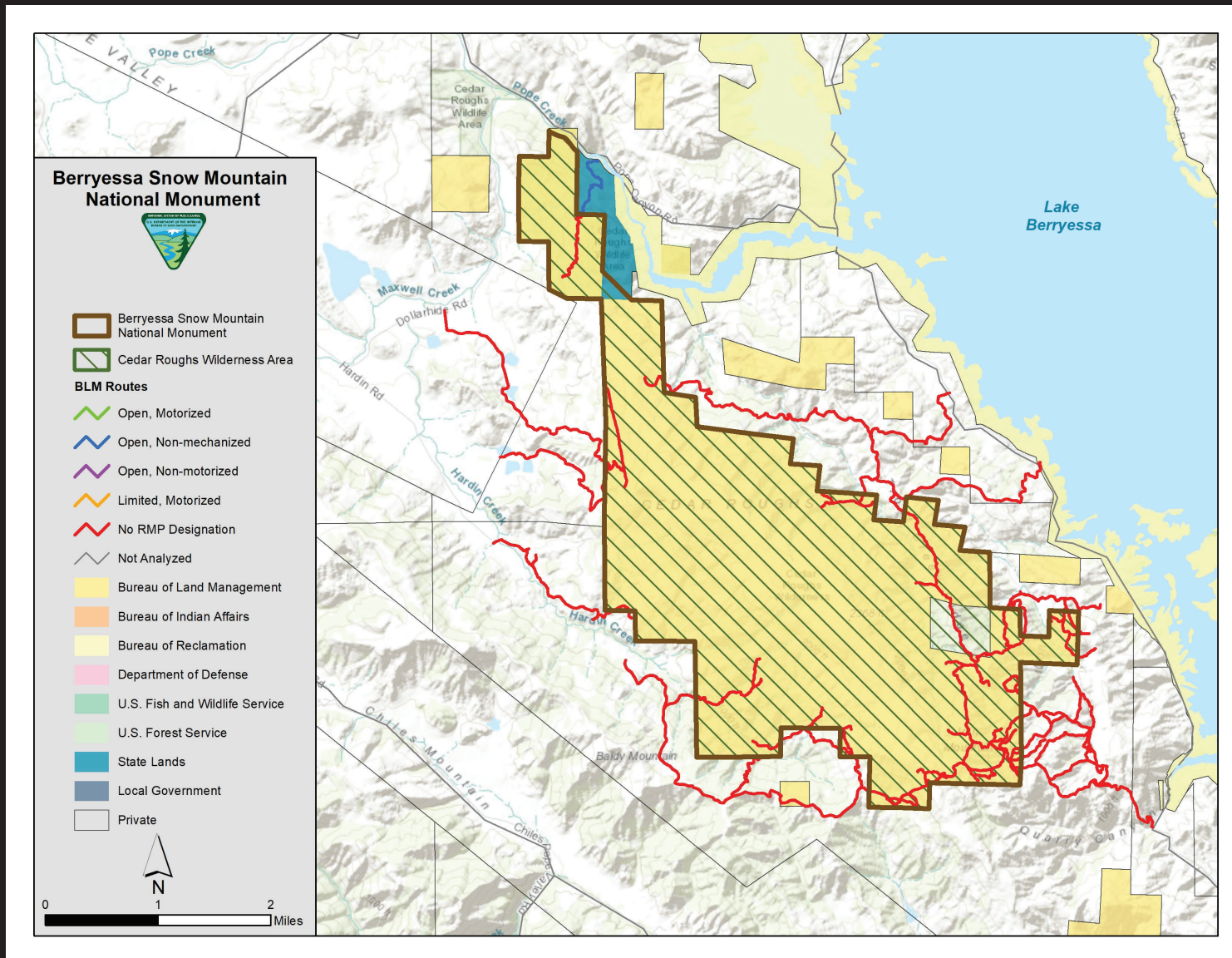
Cache Creek Natural Area



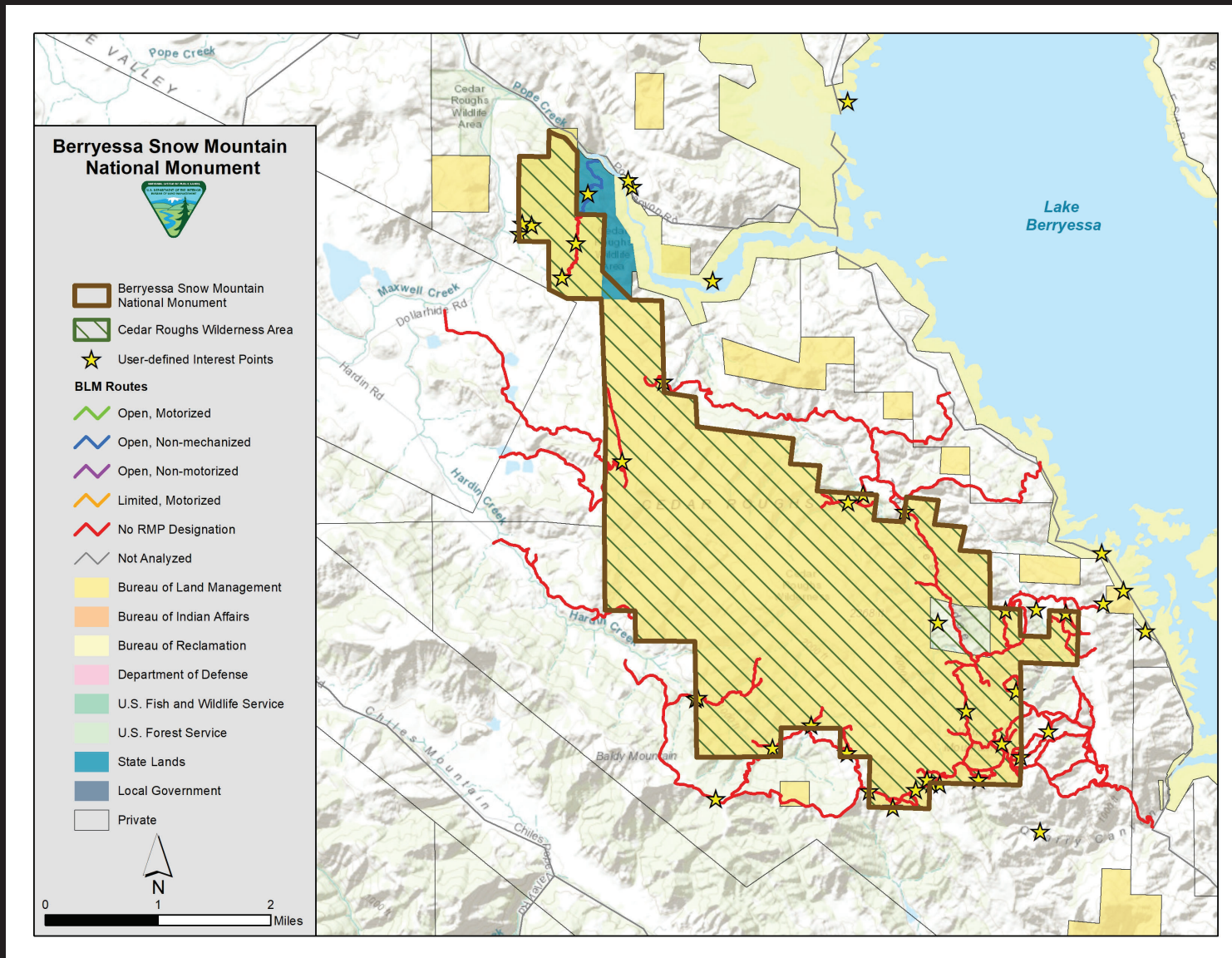
Cache Creek Natural Area



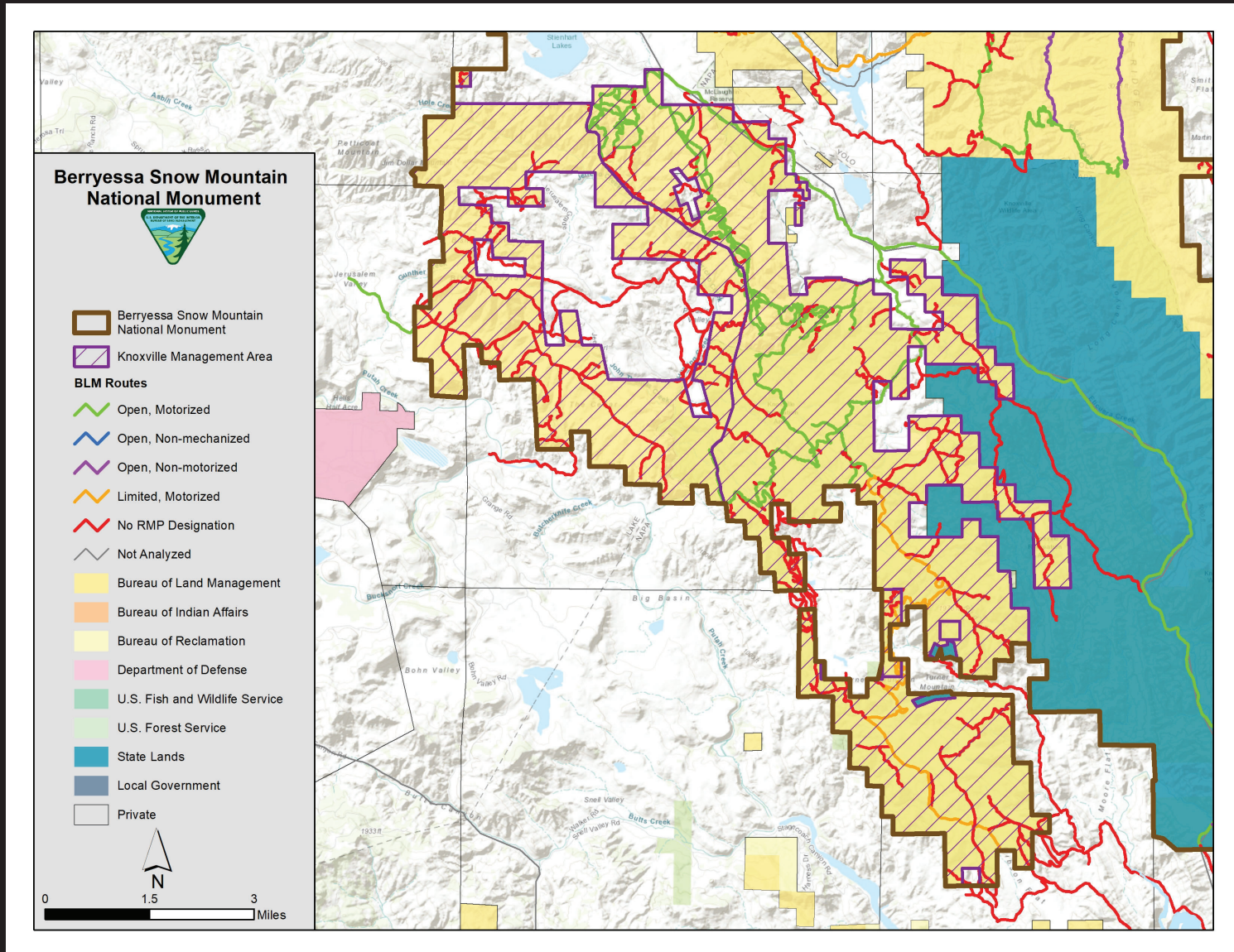
Cedar Roughs Wilderness



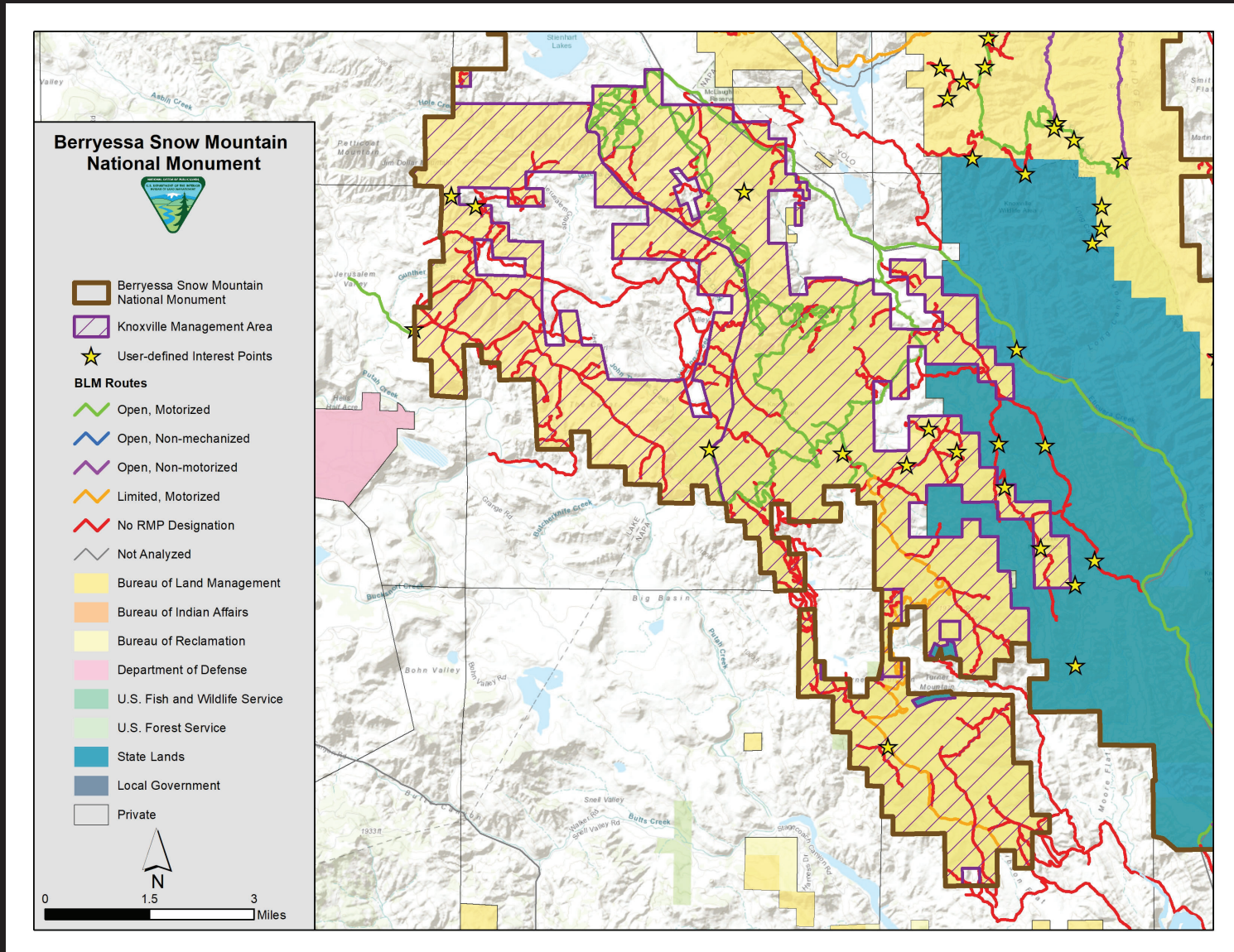
Cedar Roughs Wilderness



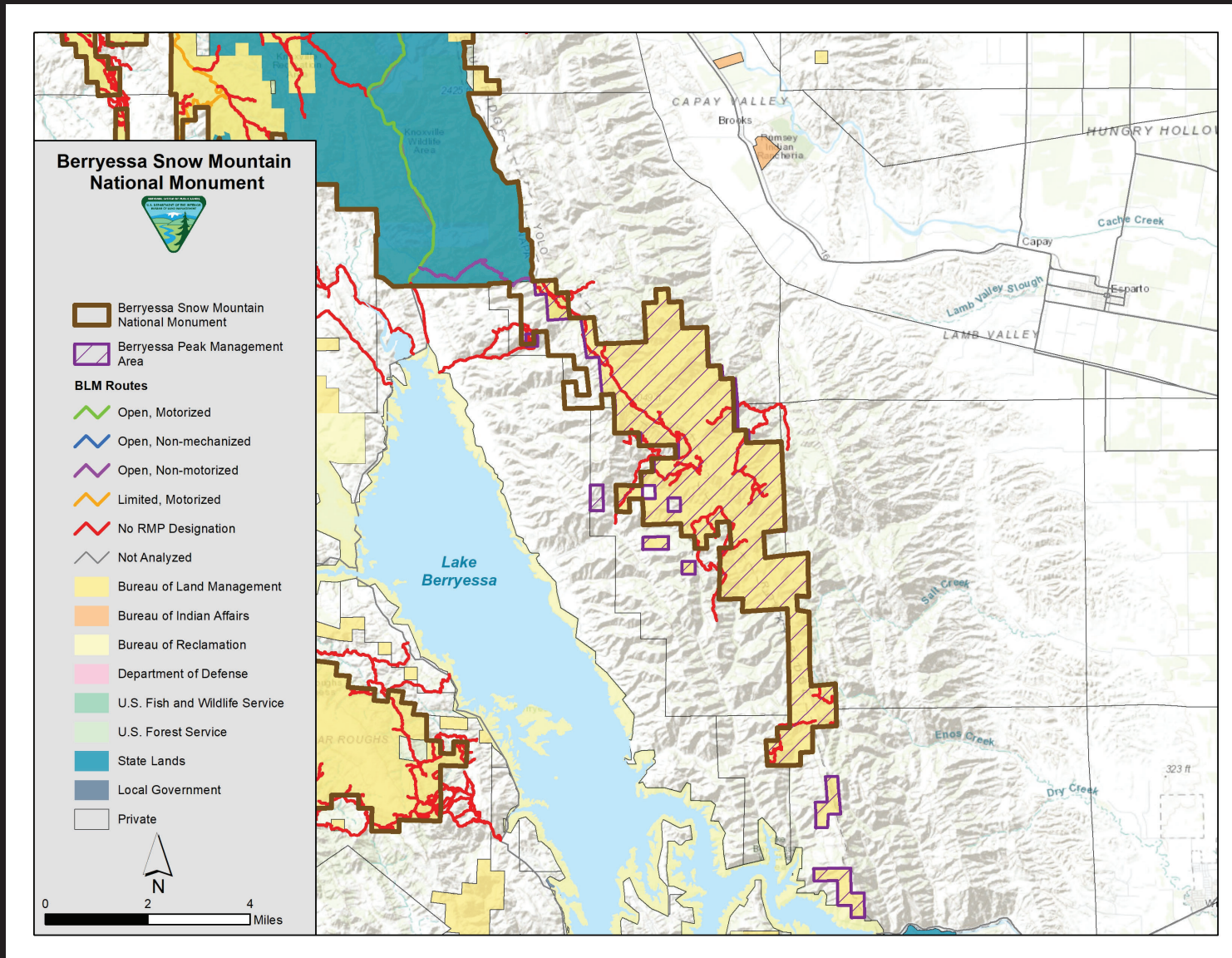
Knoxville Management Area



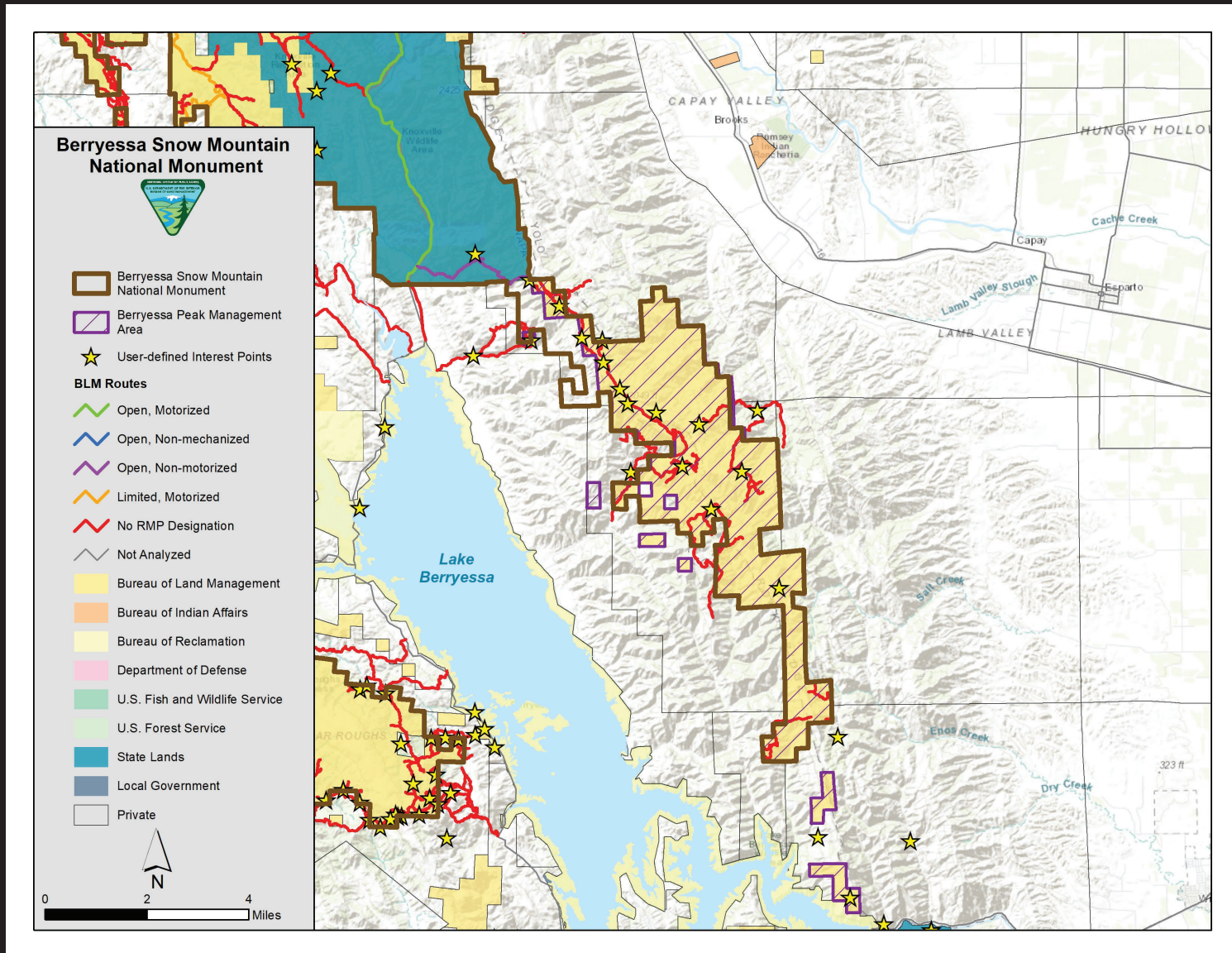
Knoxville Management Area



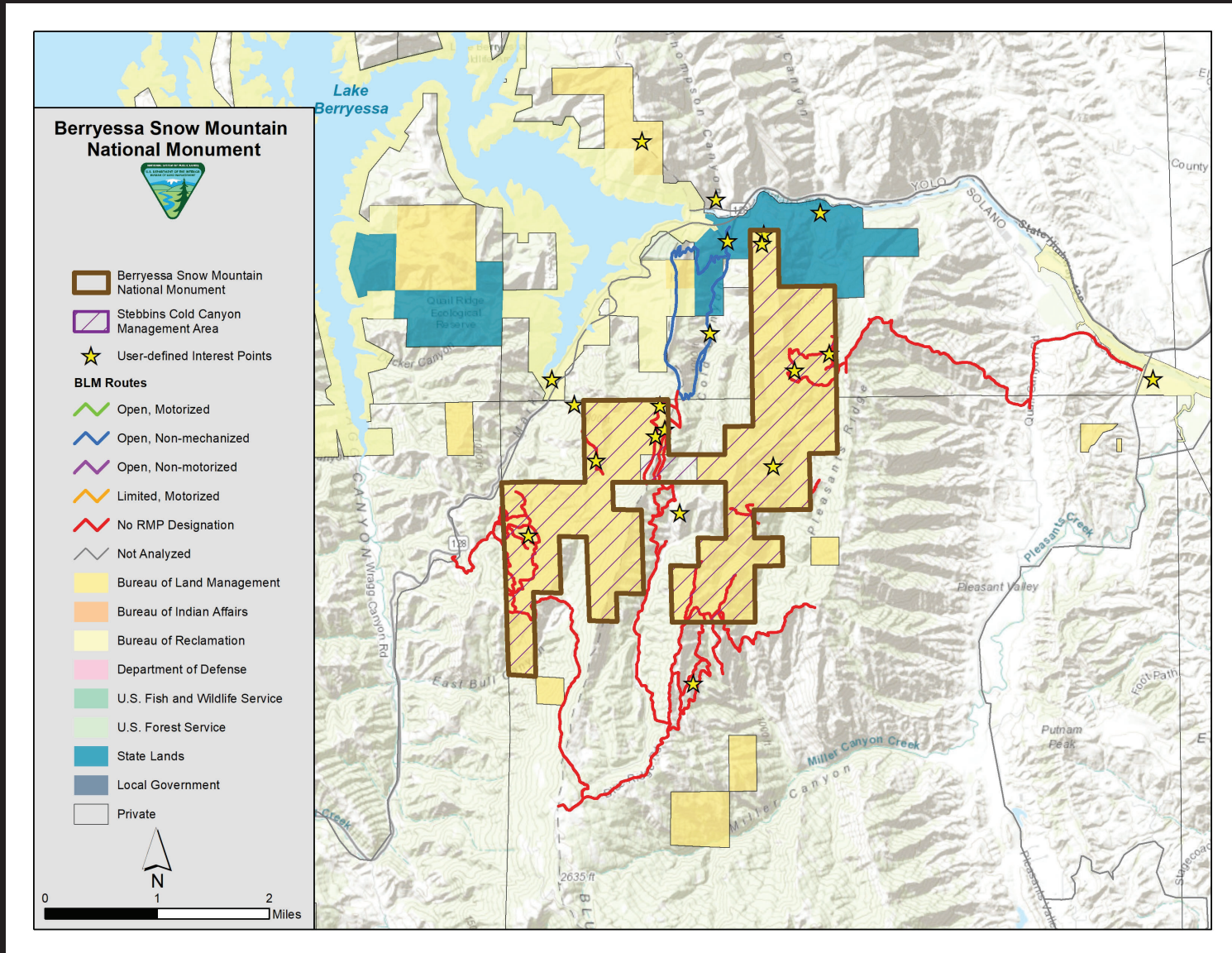
Berryessa Management Area

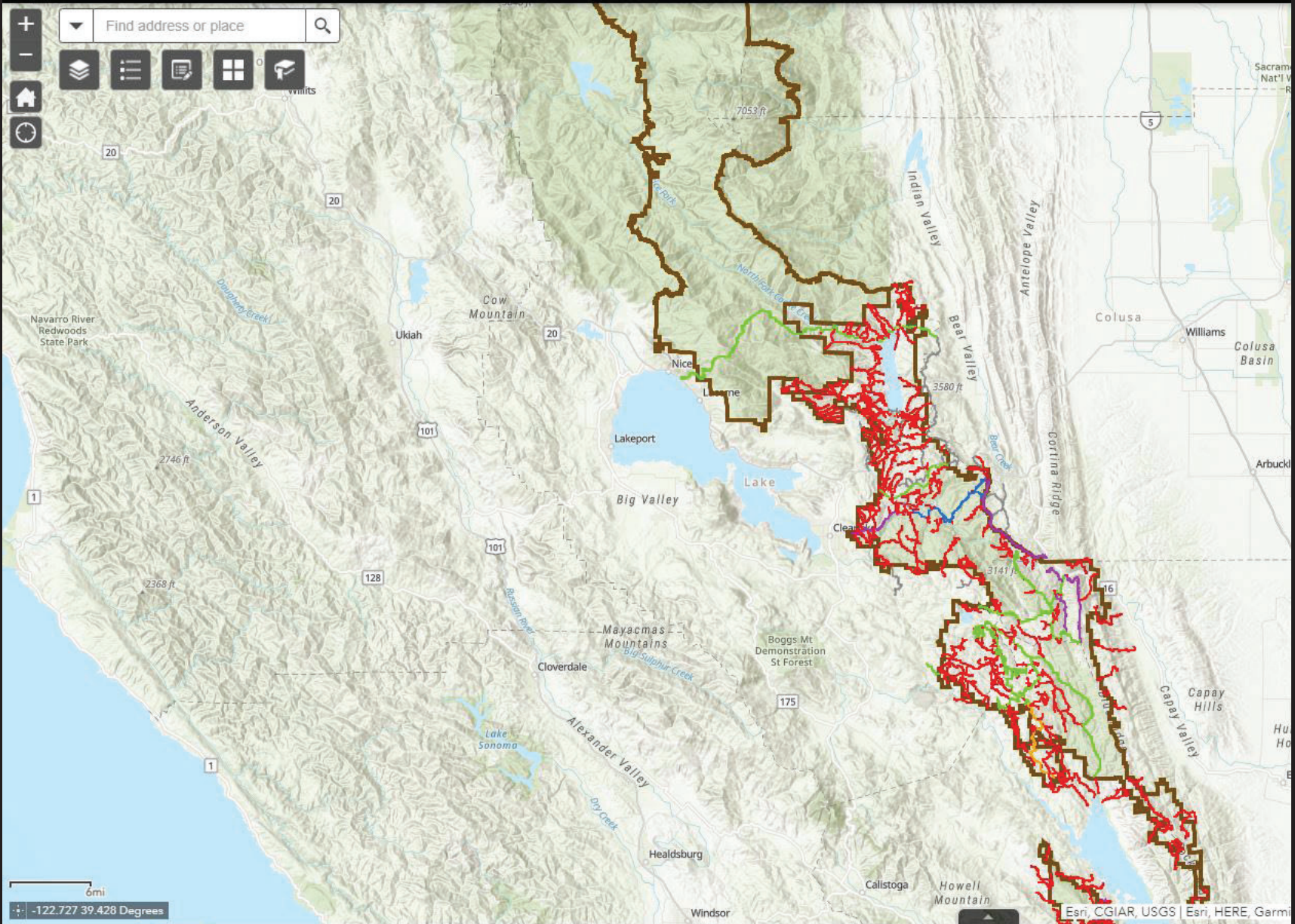


Berryessa Management Area



Stebbins Cold Canyon Management Area







U.S. Department of the Interior
Bureau of Land Management



U.S. Forest Service
Mendocino National Forest

Thank You!



For more information, please contact:

Rebecca Carr Wong

Berryessa Snow Mountain National Monument Manager

blm_ca_bsm_nm@blm.gov