



NATIONAL  
CONSERVATION  
LANDS



# Berryessa Snow Mountain National Monument

The Bureau of Land Management Ukiah Field Office  
invites you to a

## > BLM Trails and Travel Management Workshop

The BLM invites stakeholders and members of the public to the second virtual workshop designed to engage stakeholders and members of the public, as we develop a shared vision for travel management on the Berryessa Snow Mountain National Monument.

The BLM will use public input as part of our travel management planning efforts to guide the designation of a wide variety of roads and trails for motorized, non-motorized and non-mechanized recreational opportunities within the monument. This workshop will:

- **Engage** stakeholders in a collaborative discussion about travel management planning for the BLM-managed public lands within the monument
- **Provide** an overview of the BLM travel management planning process
- **Share** information provided by participants at the first workshop
- **Offer** an opportunity for participants to share additional information about uses, trails and travel routes.

We believe partnerships and inclusion are vital to managing sustainable public lands for the benefit of current and future generations.

Wednesday,  
April 21, 2021

5:30 - 8:00 p.m.

To attend,  
Please RSVP at

[https://register.gotowebinar.com/  
register/5815845177969242640](https://register.gotowebinar.com/register/5815845177969242640)

Registration prior to the workshop  
is required to participate.

Please contact us for reasonable  
accommodations to participate.

For more information about the **Berryessa Snow Mountain National Monument**  
visit [www.blm.gov/berryessa-snow-mountain](http://www.blm.gov/berryessa-snow-mountain).

For more information about the workshop, contact Rebecca Carr Wong at (707) 468-4023 or  
BLM\_CA\_BSM\_NM@BLM.GOV



# Berryessa Snow Mountain National Monument

## What is the Berryessa Snow Mountain National Monument?

The Berryessa Snow Mountain National Monument is comprised of 330,780 acres of federally managed public land that was designated a national monument by Presidential Proclamation on July 10, 2015.

The monument extends from nearly sea level to 7,000 feet in elevation, connecting BLM-managed lands at the southern boundary with U.S. Forest Service-managed lands at the northern boundary.

The monument includes Berryessa Peak and Snow Mountain, encompassing stunning views, diverse habitats and three wilderness areas. The Berryessa Snow Mountain National Monument offers a wealth of natural, historical and cultural resources, as well as exciting opportunities for people to enjoy the outdoors.

## What is the purpose of this workshop?

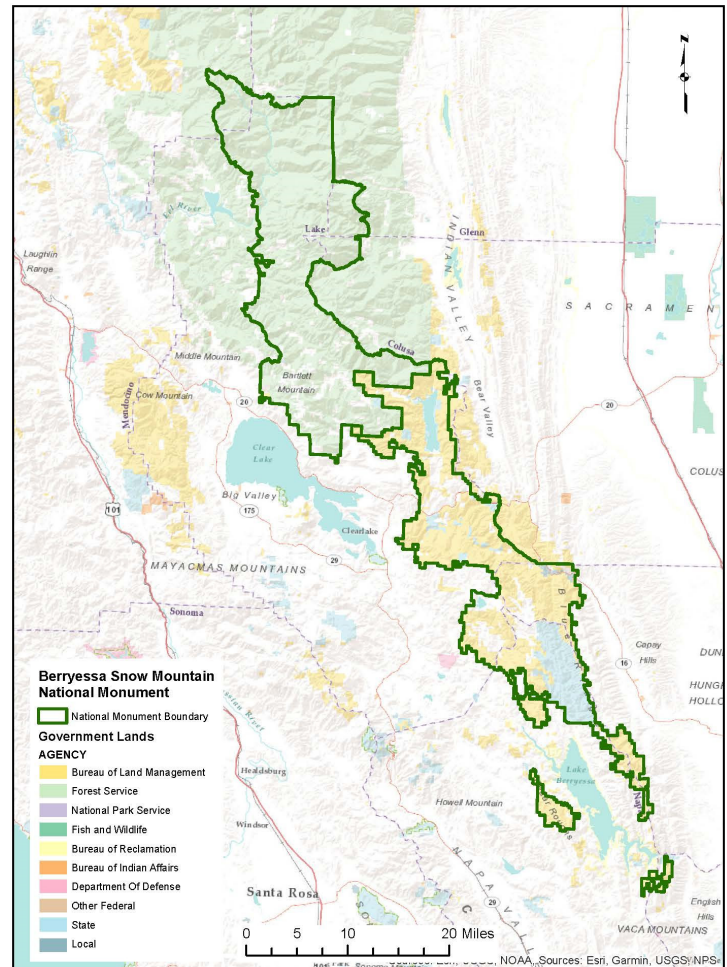
This workshop will focus on travel management planning on BLM-managed lands within the monument and provide an overview of the process.

The workshop will define the BLM-managed portions of the Berryessa Snow Mountain National Monument Travel Management Area. We will summarize information the BLM has received thus far, explore areas of interest based on participant input and show how to provide additional feedback.

## Why should I attend?

The BLM manages national monuments for public use and enjoyment. Stakeholders play an important role in the stewardship and maintenance of recreational values and natural resources that define the monument.

The workshop will be interactive and focus on sharing information about the BLM's existing trail designations, recreational uses, and considerations for the BLM travel management area of this national monument.



## What if I can't attend the workshop?

If you are not able to attend, we encourage you to designate another person who can attend on your behalf.

This is the second of two workshops and it will include the same online interactive map/survey tool that was available at the first workshop. Information that was previously added to the map can no longer be edited, but will be available for viewing and discussion at this workshop. The interactive map is available on the [BLM Berryessa Snow Mountain National Monument website](#). The BLM values the input and interest of stakeholders and the public in the management of national monuments.

**The BLM welcomes your input.**