

# **San Rafael Swell Recreation Area Advisory Council**

## **Zoom Meeting Minutes**

**February 17, 2021**

### **Meeting attendees**

San Rafael Swell Recreation Area Advisory Council (RAAC) members: Wade Allinson, Kent Wilson, Leslie (Les) K. Wilberg, Rodney (Rod) Player, Sue Bellagamba, and Elven (Leon) McElprang.

BLM employees: Greg Sheehan, Lola Bird, Rachel Wootton, Lance Porter, Chris Conrad, Amber Koski, Stephanie Howard, Daniel Kauffman, Dana Truman, Jaydon Mead, Myron Jeffs, Molly Hocanson, and Lisa Wilkolak.

Members of the public: Jim Jennings, Ben Grimes, Braden Sheppard, Carolyn Phippen, Jennifer Jones, Kim McFarlane, Mark Boshell, Neal Clark, Ray Bloxham, Ray Petersen, and Larry Ellertson.

### **Technical help introduction**

Rachel Wootton

- Rachel discussed the Zoom platform and provided her contact info in case anyone had any technical difficulties.

### **Welcome and Introductions**

- Lance Porter, Green River District Manager introduced himself and welcomed members of the Recreation Area Advisory Council (RAAC) and public. Time was turned over to the Utah BLM State Director, Greg Sheehan.
- Greg Sheehan, State Director introduced himself and gave some background on his experience. He discussed the importance of the RAAC as being representative of the broader public. He also explained the RAAC Charter and the major role of the RAAC in contributing to the creation of a long living management plan for the recreation area.
- Lance Porter then gave some background on himself and turned the time over to RAAC members to do the same.
- Wade Allinson, Leon McElprang, Rod Player, Les Wilberg, Kent Wilson and Sue Bellagamba introduced themselves to the BLM and to the public.
- Lance finished this portion with discussing logistics for the meeting.

### **Overview of Charter Roles and Responsibilities**

Presenter: Amber Koski

- Amber introduced herself to the group and gave some background into her BLM experience.

- Establishment of the San Rafael Swell RAAC as part of the John D. Dingell Jr. Conservation, Management, and Recreation Act of 2019.
- Overview map showing the recreation area designated by the Act.
- The role of the RAAC is to advise the agency in future land planning decisions. The advice will be provided through the Designated Federal Officer (DFO), Lance Porter.
- Members, what they represent and their term limits.
- Objective of an Advisory Council.
- The Charter for the SRS RAAC.
- RAAC Council members roles and responsibilities include: attend meetings and field trips, participate in public discussion of issues, maintain up-to-date knowledge of issues affecting the committee's area, provide opinions and advice, and advise DFO of potential conflicts.
- No questions or comments.

### **San Rafael Swell Recreation Area Overview**

Presenters: Chris Conrad and Stephanie Howard

- Chris gave some background on his experience with the BLM
- Overview map and explanation of designations made in the Dingell Act. These included: Jurassic National Monument, Wilderness Areas, Released Wilderness Study Areas, San Rafael Swell Recreation Area and Emery County Land Conveyance.
- Dingell Act requirements include: Protection and enhancement of recreational, natural, and educational resources; no new permanent or temporary roads constructed; motorized vehicles allowed only on designated roads; grazing livestock if established before, can continue.
  - The inventory requirements for grazing in the newly designated Wilderness areas are on-going. BLM has been meeting with permittees to identify and include routes and facilities that are already established.
    - Watering holes and ponds and access to those need to be addressed.
    - Administrative access for ranchers was explained to the group.
  - Certain rights-of-way were withdrawn from public land laws in the Dingell Act
    - All forms of entry, appropriation, and disposal under public land laws, the meaning of this needs to be clarified
  - Recreation Area and Wilderness Areas were also withdrawn from mining and leasing laws except for valid existing rights.
    - There are still 1,000s of active mining claims within the recreation area.
  - The Act requires a non-motorized trail study. A draft of this report should be ready for review by the next RAAC meeting.
    - Good Water Rim Trail is the only trail in this study not on an existing
    - road. Goblin Valley State Park provides access to the front side of the reef, this conveyance to Goblin Valley should be completed within a couple of years.

- Non-motorized Recreation Trail Opportunities required: the opportunities for canyoneering, gravel grinding exceed those in the Moab Field Office
  - An economic impact analysis was also completed for the non-motorized recreation trail opportunities study.
- The public should be educated about Cold War and historic uranium mine sites in the recreation area.
  - These areas include MK Tunnels, Copper Globe, Hidden Splendor, Lucky Strike, Old Railroad Grade camps. There will need to be interpretive signs to educate the public.
  - Shared links to videos about these areas for later viewing.
- Prepare a [management] plan
  - Resource management planning (sets the rules)
  - Implementation/Activity Plans (conforms to the rules)
- Resource Management Plan (RMP) Amendment Process: Documents and Steps
  - This is a key process and RAAC involvement in this is crucial. It will determine what will be allowed in the future.
  - The Notice of Intent could possibly be published this Spring for the Plan Amendments. This will initiate Public Scoping.
- RMP Amendment options:
  - Released Wilderness Study Areas – In the Resource Management Plan these were designated as Wilderness Study Areas, and with Dingell Act these areas were released from that designation. Could discuss how to manage these areas now.
  - BLM Natural Areas – In the Resource Management Plan these were designated to manage for their wilderness characteristics, and with Dingell Act these areas most of these areas became Wilderness Areas but pieces were not. Could discuss how to manage these areas now.
  - Areas of Critical Concern (ACEC) – Examples: the I-70 corridor viewshed, and rock art ACEC. Boundaries may need to change given Recreation Area designation which may change visitor use patterns. ACECs shouldn't overlap Wilderness Areas by BLM policy.
  - Special Recreation Management Area (SRMA) and Recreation Opportunity Spectrum (ROS) Boundaries. The boundaries of these areas don't match the designations (ROS roaded natural in designated Wilderness Area, or ROS roadless natural in Recreation Area). The boundaries could be cleaned up to reflect the designations.
  - Off Highway Vehicle Designations
    - The open vs. closed OHV area designations were explained and there were questions on identifying areas on the map.
    - An OHV is not just an ATV, the definition includes motorcycles, cars, vans, pickup trucks, also aircraft and helicopters but not boats. It is vehicle traveling off-highway period.

- The closed areas are not closed for official use. Official use is search and rescue, BLM, and administrative access for permittees.
- Visual Resource Management (VRM)
  - Class I – Natural Character mostly overlaps previously designated Wilderness Study Areas. Should match all Wilderness Areas.
  - Class II – Retains existing character of landscape, previously overlapped BLM natural areas, which are mostly Wilderness Areas and some Recreation Area.
  - Class III – Partially retain existing, should not dominate the view. Currently about half of the current Recreation Area.
  - Class IV – Major modifications, may dominate the view. Currently about half of the current Recreation Area.
  - Things to think about – Are these classifications still appropriate based on the designation?
- Adjust Dispersed Camping
  - Dispersed camping is allowed throughout the Recreation Area.
  - Things to think about - What is the best way to manage this to minimize impacts?
- Timing: BLM is handling a giant workload. This plan amendment is not the only project. There are six Dingell Act RMP amendments, there are two Travel Management Plans which are court ordered to be completed in a certain time frame, Dingell Act land exchanges will begin picking up, there are Dingell Act conveyances, the Great American Outdoors Act funded several Price Field Office projects, and there are many implementation plans that are ongoing.
- Implementation Projects Process includes: Design the project, Conduct surveys, Prepare NEPA, Consultation, Issue decision, and Implement.

RAAC Member Discussion:

- Land exchange and SITLA- All the SITLA parcels in the recreation area are proposed by Congress to come to BLM. Land exchange procedure includes: receive a proposal, feasibility evaluation, Federal Register Notice, Appraisal, mineral potential analysis, historic properties analysis and other surveys, and Environmental Assessment. If approved, final title is conveyed. Map of all parcels to possibly exchange will be shared.
- How will State parcels be managed if not exchanged? There would need to be a Memorandum of Understanding (cooperative agreement) based on purpose and need. For instance: The State may not want to exchange the cell tower off of I-70, parts of Labyrinth were not exchanged due to helium assets.
- Concerning Special Recreation Management Area (SRMA) and Recreational Opportunity Spectrum (ROS) Boundaries –
  - What is the determining factor, and what changes boundary lines? They will be adjusted to congressional boundaries. Once the boundaries are determined what they become is dictated by what they contain.

- Example – Cane Wash contains a fence and a trough, would this be handled by granting administrative access to this into the wilderness area? These things need to be brought to BLM’s attention. The Range team in Price has been meeting with permittees to get an inventory of the range facilities, so they can be documented as valid pre-existing rights. BLM provided Price Field Office contacts to the group to address any issues they know about.

- Question/Discussion - Is the BLM required to do a Recreation Opportunity Spectrum evaluation in Winter & Summer? No, the recreational opportunities usually are the same in all seasons on BLM land. The RAAC could bring up new opportunities if known.

- Is it possible to amend criteria based on monitoring of use levels and identification of issues? Yes, the BLM calls that adaptive management. Certain criteria can trigger a management change.
- Comments - There are many that are camping in cattle ponds, or using cattle corrals. This needs to be managed.
- Question/Discussion - Is there a specific distance from off the road that designates how far off the road you can camp? Currently undefined but best practice is to only camp where someone else has camped. May be defined by the San Rafael Swell Travel Management Plan.
- Comment - Most people just do things because of a lack of knowledge. This causes a lot on contention. Education helps.
- Interpretation is a valuable tool. One of the jobs of the RAAC is to help form decisions on things like that. There are more people finding the Swell every day. Visitation numbers keep climbing. Comment - There should be kiosks in grazing areas to help avoid conflicts by educating the public. Signage is key to educating people about cattle, rock art, etc, This is part of the robust conversations that we need to be having. You are here to cooperate in the planning effort. All opinions and suggestions need to be considered.

### **Review of Duties of Chairperson, Vice Chair and Designated Federal Officer**

Presenter: Amber Koski

- Council Chairperson administers the meeting and certifies the accuracy of the meeting minutes.
- Vice Chairperson serves as backup to the Chairperson.
- The Designated Federal Officer approves or calls all council and subcommittee meetings, prepares and approves meeting agendas, attends all meeting, adjourns the meeting when they determine it is in the public’s interest, chairs the meeting when directed to do so by the Secretary.
- To constitute a quorum, the number is half (rounded up) plus 1 = 5 members needed for a quorum. Regarding making recommendations consensus is ideal, if not possible an 80% vote is required, 5 out of 6 members have to concur.

RAAC Member Discussion / Vice & Chair Decisions:

- Nominations for Chairperson and Vice Chair were suggested by Wade Allinson. Leslie Wilberg for Chairperson, and Rodney Player for Vice Chair. This was seconded.

- A vote was held, all were in favor. The RAAC appoints Leslie K. Wilberg as Chairperson, and Rodney Player as Vice-Chairperson.
- Question - We do not have a tribal representative. Do we have to have the other member to constitute a quorum? The 5 members needed to concur includes the vacant the tribal representative seat.
- Question - Who sets the agenda? The Designated Federal Officer will work with the Chairperson to set the agenda. The Advisory Council sets the rules based on their comfort level there is no requirement to follow Robert's Rules of Order. However, normally you call for nomination, then there will be a vote. Regulations do not dictate how the process should run.
- Question - Is this a yearly appointment? It was decided that the Chair and Vice-Chairperson would serve until their term expires.

Chairperson dismissed until 1 pm, this motion was seconded.

### **Recreation and Visitor Services**

Presenters: Myron Jeffs and Jaydon Mead

- Organization of BLM office structure – Who's Who
- Map showing areas covered beyond the San Rafael Swell Recreation Area
- Hot spots and activities overview
- Recreation Area visitation and data
  - Hard to specify data for the Recreation Area because data measurement points were set before the boundaries were established
  - 2020 adjusted some measurement points to collect more specific data for the Recreation Area
  - Field Office wide 2020 had 434,764 visitor days
  - 8 Traffic counters were installed in the Recreation Area 3 years ago
  - 14 Traffic counters recently installed in the Recreation Area. Plans with Emery County to install more.
  - Site specific: Good Water Rim Trail gets roughly 3,000 bikers a year, 5 year average visitation to the Swinging Bridge Campground is roughly 3,500 individuals, Little Wild Horse Canyon receives roughly 30,000 hikers per year.
- There are two developed fee campgrounds and 14 toilets, along with other amenities such as parking areas, trailheads, kiosks, and other types of facilities.
- Visitor Fees and Camping
  - A business plan was approved by the Utah Regional Advisory Council (RAC) to increase fees from \$6/night to \$15/night. The RAC also approved implementation of fees in: 5 locations distant from the Recreation Area, 4 locations in the Recreation Area (Temple Mountain Townsite, Buckhorn Wash, The Wickiup, and The Wedge), and three locations along the border of the Recreation Area (South Temple Wash, Little Wild Horse, and San Rafael Reef).
  - Implementation is in progress for three areas: Buckhorn Draw, South Temple Wash, and Temple Mountain Townsite.
- Partnerships and Volunteers

- 1,068 hours of volunteer work in FY 2020
- Partners obtain grants of their own in support of projects
- Partners and volunteers included: Emery County Trails Committee and Road Department, Emery Telcom, Utah State Parks, also Eagle Scout Projects, Wasatch Mountain Club, Backcountry Horseman, USU Eastern, Sage Riders, Dedicated Hunters, and Castle Country OHV Club contributed many hours.
- A look ahead
  - Campground developments and fee collections at the 7 locations within or adjacent to the Recreation Area
  - The Wedge is home to camping and more. It is a hub of activity containing a stunning overlook and the very popular Good Water Rim Trail.
  - Fullers Bottom is owned by the DWR, and is a BLM Easement. There is continuing work on access improvements.
  - Justesen Flat is a hub of activity, easily accessible, and provides access to several locations and activities.
  - Non-motorized trail study is required by Dingell Act. BLM is in the process of putting together an inventory of trails and opportunities for non-motorized trails.

#### RAAC Member Discussion:

- Do fees go into the General Fund or stay at the Field Office level? All fees stay locally for enhancements and developments in the campground they come from. This includes general maintenance, toilets, toilet paper, fire rings, etc.
- What about Special Recreation fees? Funds go to the Field Office level.
- Are any of the areas going to get ADA accessible parking and access for wheelchairs, like the Wedge Overlook? There are many things that need to be done and this is a good recommendation.
- There needs to be counters in the high use areas to make sure that these networks are identified and able to handle all the people.
- What happens in areas that are bordering on National Parks? For instance, the San Rafael Swell Travel Management Plan has signed a cooperative agreement, Memorandum of Understanding, with National Parks bordering the Travel Management Area. They will be involved in all plans.
- Signage seems to be advantageous to all and can possibly be coordinated with the State Parks. There is a need for better directional signs. Last year the Price Field Office hired a Park Ranger that serves as an interpretive specialist. This will lead to upgrades in plans.
- Emery County's perspective on signage is that there are important stories to be told by the 2<sup>nd</sup> and 3<sup>rd</sup> generation that still use the Swell. Emery County does have some funding to help with signage needs.
- Signs for education on proper etiquette around rock art, dinosaur tracks, etc. are needed.
- Discussion regarding recreation use and visit with respect.

## **San Rafael Swell Travel Management Plan**

Presenter: Daniel Kauffman

- Dan introduced himself and gave some background into his BLM experience.
- Overview and Background
  - Purpose and need of this travel planning project
    - Clearly and comprehensively designate inventoried and evaluated routes within the Travel Management Area (TMA) as open, limited, or closed to Off-Highway Vehicle (OHV) use
    - To adopt and Travel Management Implementation Plan
    - The need for the project is driven by the BLM's obligation to comply with the 2017 Settlement Agreement and the objectives reflected in the 2008 Resource Management Plans (RMPs)
  - Project Overview & Background
    - BLM is reviewing approximately 2,000 miles of existing routes.
    - The Travel Management Area encompasses portions within the Price and Richfield Field Offices.
    - BLM intends to designate each route as OHV open, limited, or closed
      - OHV Open = Recommended open for all modes of travel and uses.
      - OHV Limited = Recommended for limited use by travel mode, user, or season of use.
      - OHV Closed = Recommended for permanent closure to OHV use, though authorized use may continue. Route may be reclaimed, barriers may be installed, and signs may be placed.
    - The term "public OHV" includes passenger vehicles in addition to traditional OHV's such as 4WD, side by side, and motorcycles.
    - Each route has been reviewed by an interdisciplinary and inter-agency team of specialists.
    - This plan will not result in constructing new roads.
    - Travel planning effort and resulting TMP are not intended to provide evidence, bearing on or address the validity of any Revised Statute 2477 (RS 2477) assertions.
    - Maps of Field Office Boundaries and TMA Boundaries were presented.
- Public Feedback Opportunities & Highlights
  - How can you help us? What can we do better?
  - Public feedback opportunities include:
    - Ongoing information gathering
    - Public Scoping, Alternative Development, and Public Comment Period
  - Ways to comment during scoping
    - Preferred method is through the ePlanning website, once there you will be able to comment, or comment via the interactive web map.
    - Can email comments to the Price office: [blm\\_ut\\_pr\\_comments@blm.gov](mailto:blm_ut_pr_comments@blm.gov)



- You can also mail comments postmarked by March 4<sup>th</sup> to the Price Field Office.
- Points of helpful consideration, how to comment
  - Resources affected by route, purpose of route that needs to be considered, strong opinions on route, actively used and any missing routes.
- Public Outreach Highlights
  - Public News Release, social media posts, cooperative agreements, tribal consultation, emails to special interest groups, cooperators, intervenors, or private citizens, an online scoping.
  - An overview of ePlanning system, interactive map and how to comment was reviewed.

RAAC Member Discussion:

- Comments are not going through on the ePlanning system and cannot comment in the interactive map. The system is supposed to be getting better. There have been trouble tickets submitted to address issues. If anyone has problems, please let us know so we can send them to the ePlanning system.
- Is there anywhere on the map that will tell you what the routes are? The interactive map was pulled up and the group discussed the lack of information of the map to know exactly which route you are commenting on. It was demonstrated that layers can be turned off and on, there are changes that can be made to the base map to help get your bearings.
- There was a search performed for a specific route with help of BLM personnel.

**San Rafael Swell RAAC – Advisory Council Web Page Tutorial**

Presenter: Amber Koski

- [San Rafael Swell Recreation Area Advisory Council](#)
- The group visited the website and learned how to navigate to important information

Break –

**Discuss public comment period process**

Presenter: Rachel Wootton

Public commentators will be provided 4 minutes to address the RAAC.

**Public Comment Period**

- Neal Clark had no comment.
- Ray Petersen: There were two vacant seats, but I see now that Sue Bellagamba is the representative for conservation organizations. Is the empty seat on the RAAC, representative of Tribal Government going to be filled?
- Larry Ellertson: In regards to the WSA Released Lands, it should be considered that management should be for the broadest public use & benefit.
- Larry Ellertson: The Lone Peak 4 WD Jeep Club could also help with signage.

## **RAAC Wrap-up Discussion**

- RAAC members discussed signage and made the following comments:
  - The Buckhorn Visitor center may have wall space for interpretive signs. There are empty kiosks that do not have signs. Signs need to be accurate. They could address rules and regulations. Could inform the public where their money is going.
  - Signage needs to be aesthetically pleasing (no sign pollution) and communicate the right message. In paved heavily used areas, more signs may be appropriate, but not so much in less traveled areas.
  - It might be useful to bring others from Emery County into the sign discussion.
  - Wilderness portal signs have been installed. BLM will start putting out signs on kiosks starting next week. These really convey recreation opportunities and how to properly recreate. There will be options for virtual signage. The State Office is creating something to be used in an Explorer application and downloaded for use offline.
  - Volunteer groups could be implemented to change out signs, remove outdated signs, and place new signs.
- RAAC would like to review other management plans and revisit the presentation about land designations at the next meeting.
- How does BLM views e-Bikes? An e-Bike can be on both motorized and non-motorized trails. They are not viewed as anything but an e-Bike, can be both.
  - If trails are built with non-motorized funds there may be an issue allowing eBikes. There are no non-motorized funding or trails in the Price Field Office. These e-Bike issues can be fleshed out in the Resource Plan Amendment Process.
- The question from the public about the Tribal representative vacancy on the RAAC was answered. The seat is open and hopefully will be filled
- Discussion on how the public can provide inventory information on ponds, trails, etc. BLM has been reaching out to permittees but this information could be conveyed at the Emery or Carbon County Trails meetings. The Act requires a complete inventory of all range facilities plus access in the Wilderness Areas and the Recreation Area. If something was missed the BLM needs to know.
- Discussion of non-motorized inventory being conducted. The report draft should be complete for the next meeting which includes canyoneering, and horseback trails. Areas may need protection or limitations.
- Can we give support or comment on the Travel Management Plan? Yes, you can give your recommendations. Hours could be spent on the interactive map. There are roads that are well used that need to stay open that we could concentrate on. The TMP will not create new roads so we need to fight to maintain to keep the roads open that ought to be.
- The group needs to think about camping designations. Right now everything is open to dispersed camping. It is an important topic because people will begin camping everywhere. There are ways to monitor high use camping areas. Aerial photographs during Easter and other busy times would be a useful tool and help show reasoning behind possible management changes.
- There needs to be a discussion on cultural protection. There are many rock-art panels, etc. that are being damaged by cattle rubbing against them. The council can discuss protection measures such as a 4 to 5 foot strip around the area and fencing.

### **San Rafael Swell Advisory Council Recommendations:**

- Signage: BLM add to next agenda. Review details and options for how to improve signage and education. (Talk to Emery County and look at other areas for ideas)
- Understand land designations better at the next meeting.
- Keep all currently used routes in the San Rafael Swell Recreation Area open. Maintain roads, trails, within the San Rafael Swell Recreation Area.
- Resource Inventories should consider SITLA parcels since they may be exchanged in future.
- Consider adding rock art protections, ie: fences etc.
- Be more pro-active for camping (think about where it is appropriate, consider camping only in designated sites, review where dispersed camping is allowed.)

The Chairperson approved the recommendations that were presented. He also asked if anyone had more recommendations for the next meeting.

Kent Wilson motioned for approval of the discussed April agenda items. This was seconded by Leon McElprang. No one was opposed. The April Agenda will be shared when it is complete.

- Discussion on in-person meeting at Emery County Courthouse in April:
  - The next RAAC meeting will be held April 7<sup>th</sup> from 12:30 pm to 5:00 pm, and April 8<sup>th</sup> from 8:30 am to 12:00 pm.
  - Is it possible for the Council and BLM to meet in person, and for the public to meet virtually? BLM will have to check on this.
  - Since the pandemic, most meetings have been exclusively on Zoom platform.
  - Possibly offering both may increase the amount of input the RAAC receives. The public may not want to travel.
  - It was proposed that two day RAAC meetings might be difficult for those who work. The members have no issue with the schedule as it is.
  - The Federal Register Notice posted the February 17<sup>th</sup> meeting all day and the two day meeting in April. The next meeting cannot be changed without notification in the federal register.

Chairperson adjourned meeting at 4:50 pm

Approved:

xLeslie K. Wilberg

3/4/2021

Leslie K. Wilberg  
Chairperson

## Attachments

---

- A. Federal Register Notice
- B. News Release
- C. Agenda
- D. Overview of Charter Roles and Responsibilities PowerPoint slides
- E. San Rafael Swell Recreation Area Overview PowerPoint slides
- F. Review of Duties of Chairperson, Vice Chair and Designated Federal Officer PowerPoint slides
- G. Recreation and Visitor Services PowerPoint slides
- H. San Rafael Swell Travel Management Plan PowerPoint slides
- I. Advisory Council Web Page Tutorial PowerPoint slides

landowners, local business owners, and the public at large. More information can be found on the BENM MAC web page at <https://www.blm.gov/get-involved/rac-near-you/utah/benm-mac>.

Planned agenda items for the meeting include discussing and receiving input on Bears Ears National Monument management planning efforts, wood-cutting and harvesting, and other issues as appropriate.

A public comment period will be offered during the meeting. Depending on the number of people wishing to comment and the time available, the time for individual comments may be limited. Written comments may also be sent to the Monticello Field Office at the address listed in the **FOR FURTHER INFORMATION CONTACT** section of this notice. All comments received prior to the meeting will be provided to the BENM MAC.

Before including your address, phone number, email address, or other personal identifying information in your comment, you should be aware that your entire comment—including your personal identifying information—may be made publicly available at any time. While you can ask us in your comment to withhold your personal identifying information from public review, we cannot guarantee that we will be able to do so.

Detailed meeting minutes for the BENM MAC meeting will be maintained in the Canyon Country District Office and will be available for public inspection and reproduction during regular business hours within 90 days following the meeting. Minutes will also be posted to the BENM MAC web page.

**Authority:** 43 CFR 1784.4–2.

**Gregory Sheehan,**  
State Director.

[FR Doc. 2021–00790 Filed 1–14–21; 8:45 am]

**BILLING CODE 4310-DQ-P**

**DEPARTMENT OF THE INTERIOR**

**Bureau of Land Management**

[212 LLUT912000 L13140000.PP0000]

**Notice of Public Meeting, Utah Resource Advisory Council, Utah**

**AGENCY:** Bureau of Land Management, Interior.

**ACTION:** Notice of public meeting.

**SUMMARY:** In accordance with the Federal Land Policy and Management Act, the Federal Advisory Committee Act, and the Federal Lands Recreation Enhancement Act, the U.S. Department of the Interior, Bureau of Land

Management’s (BLM) Utah Resource Advisory Council (RAC) will meet as indicated below.

**DATES:** The Utah RAC will hold an online meeting on March 2, 2021, from 8 a.m. to 4:30 p.m. The meeting is open to the public.

**ADDRESSES:** The agenda and meeting registration information will be posted on the Utah RAC web page 30 days before the meeting at <https://www.blm.gov/get-involved/resource-advisory-council/near-you/utah/RAC>. Written comments to address the Utah RAC may be sent to the BLM Utah State Office, 440 West 200 South, Suite 500, Salt Lake City, Utah 84101, or via email to [BLM\\_UT\\_External\\_Affairs@blm.gov](mailto:BLM_UT_External_Affairs@blm.gov) with the subject line “Utah RAC Meeting.”

**FOR FURTHER INFORMATION CONTACT:** Lola Bird, Public Affairs Specialist, BLM Utah State Office, 440 West 200 South, Suite 500, Salt Lake City, Utah 84101; phone (801) 539–4033; or email [lbird@blm.gov](mailto:lbird@blm.gov). Persons who use a telecommunications device for the deaf (TDD) may call the Federal Relay Service (FRS) at (800) 877–8339 to leave a message or question for Ms. Bird. The FRS is available 24 hours a day, 7 days a week. Replies are provided during normal business hours.

**SUPPLEMENTARY INFORMATION:** The Utah RAC provides recommendations to the Secretary of the Interior, through the BLM, on a variety of public lands issues. Agenda topics will include: BLM Utah priorities, statewide resource management planning, travel management planning overview and current status, Color Country District project planning, Dingell Act implementation, Wild Horse and Burro Program, Great American Outdoors Act update, fuels management update, Draft Business Plan for the Kanab Field Office Campground Program, and other issues as appropriate. The Utah RAC will offer a 30-minute public comment period. Depending on the number of people wishing to comment and the time available, the amount of time for individual oral comments may be limited. Written comments may also be sent to the BLM Utah State Office at the address listed in the **ADDRESSES** section of this notice. All comments received will be provided to the Utah RAC.

**Public Disclosure of Comments:** Before including your address, phone number, email address, or other personal identifying information in your comment, you should be aware that your entire comment—including your personal identifying information—may be made publicly available at any time. While you can ask us in your comment

to withhold your personal identifying information from public review, we cannot guarantee that we will be able to do so.

Detailed meeting minutes for the Utah RAC meeting will be maintained in the BLM Utah State Office and will be available for public inspection and reproduction during regular business hours within 90 days following the meeting. Minutes will also be posted to the Utah RAC web page.

(Authority: 43 CFR 1784.4–2)

**Gregory Sheehan,**  
State Director.

[FR Doc. 2021–00791 Filed 1–14–21; 8:45 am]

**BILLING CODE 4310-DQ-P**

**DEPARTMENT OF THE INTERIOR**

**Bureau of Land Management**

[212 LLUTG02000 L17110000.PN0000]

**Notice of Public Meetings, San Rafael Swell Recreation Area Advisory Council, Utah**

**AGENCY:** Bureau of Land Management, Interior.

**ACTION:** Notice of Public Meetings.

**SUMMARY:** In accordance with the Federal Land Policy and Management Act, the Federal Advisory Committee Act, and the Federal Lands Recreation Enhancement Act, the U.S. Department of the Interior, Bureau of Land Management’s (BLM) San Rafael Swell Recreation Area Advisory Council (Council) will meet as indicated below.

**DATES:** The Council is scheduled to meet on February 17, 2021, from 8 a.m. to 5 p.m. The Council is also scheduled to meet on April 7, 2021, from 12 p.m. to 5:00 p.m. and on April 8, 2021, from 8:30 a.m. to 12 p.m. A virtual meeting platform and/or teleconference may substitute an in-person meeting if public health restrictions are in place.

**ADDRESSES:** The meetings will be held at the Emery County Courthouse, 75 East Main Street, Castle Dale, Utah 84513. Written comments to address the Council may be sent to Lance Porter, Green River District Manager, 170 South 500 West, Vernal, Utah 84078, or via email with the subject line “San Rafael Swell Advisory Council meeting” to [utprmail@blm.gov](mailto:utprmail@blm.gov).

**FOR FURTHER INFORMATION CONTACT:** Lance Porter, Green River District Manager, 170 South 500 West, Vernal, Utah 84078; phone (435) 781–4400; or email [l50porte@blm.gov](mailto:l50porte@blm.gov). Persons who use a telecommunications device for the deaf may call the Federal Relay Service

(FRS) at 1-800-877-8339 to leave a message or question for the above individual. The FRS is available 24 hours a day, seven days a week. Replies are provided during normal business hours.

**SUPPLEMENTARY INFORMATION:** The John D. Dingell, Jr. Conservation, Management, and Recreation Act (Pub. L. 116-9) established the Council to provide advice and information for the BLM in planning and managing the San Rafael Swell Recreation Area. The seven-member council represents a wide range of interests including local government, recreational users, grazing allotment permittees, conservation organizations, expertise in historical uses of the recreation area, and Tribes. More information can be found at: <https://www.blm.gov/get-involved/resource-advisory-council/near-you/utah/San-Rafael-Swell-RAC>. Agenda topics for the February meeting will include an overview of Dingell Act mandates, an overview of the Price Field Office Resource Management Plan (RMP), nomination of a Council chairperson and vice-chairperson, identification of next steps, and discussion of upcoming RMP amendments. Agenda topics for the April meeting will include agency updates, RMP updates, and discussion of implementation-level plans. The final agendas and meeting information will be posted on the Council's web page 30 days before the meetings.

The meetings are open to the public; however, transportation, lodging, and meals are the responsibility of the participating individuals. A public comment period will be offered each day of the scheduled meetings. Depending on the number of people wishing to comment and the time available, the time for individual comments may be limited. People wishing to speak will be asked to sign in before the scheduled oral comment time for planning and record keeping purposes. Written comments may also be sent to the Price Field Office at the address listed in the **ADDRESSES** section of this notice. All comments received will be provided to the Council.

**Public Disclosure of Comments:** Before including your address, phone number, email address, or other personal identifying information in your comment, you should be aware that your entire comment—including your personal identifying information—may be made publicly available at any time. While you can ask us in your comment to withhold your personal identifying information from public review, we

cannot guarantee that we will be able to do so.

Detailed Council meeting minutes will be maintained in the Green River District Office and will be available for public inspection and reproduction during regular business hours within 90 days following each meeting. Minutes will also be posted to the Council web page.

**Authority:** 43 CFR 1784.4-2.

**Gregory Sheehan,**

*State Director.*

[FR Doc. 2021-00445 Filed 1-14-21; 8:45 am]

**BILLING CODE 4310-DQ-P**

## DEPARTMENT OF THE INTERIOR

### Bureau of Land Management

#### Fish and Wildlife Service

[212L1109AF LLUTC03000  
L16100000.DS0000 LXSSJ0740000; UTU-  
93620; 13-08807]

#### **Notice of Availability of the Records of Decision for a Highway Right-of-Way, Amended Habitat Conservation Plan and Issuance of an Incidental Take Permit for the Mojave Desert Tortoise, and Approved Resource Management Plan Amendments, Washington County, UT**

**AGENCY:** Bureau of Land Management, Interior; Fish and Wildlife Service, Interior.

**ACTION:** Notice of availability.

**SUMMARY:** The Bureau of Land Management (BLM) and the U.S. Fish and Wildlife Service (Service), as joint lead agencies, announce the availability of the records of decision (ROD) for the Northern Corridor highway right-of-way (ROW), issuance of an incidental take permit (ITP), and approved amendments for the Red Cliffs National Conservation Area (NCA) and St. George Field Office Resource Management Plans (RMP).

**DATES:** The Secretary of the Interior signed the ROD on January 13, 2021 which constitutes the final decision of the BLM and made the approved amendments to the RMPs, effective immediately. The BLM also signed the ROW grant for the Northern Corridor highway and issued the grant to the Utah Department of Transportation (UDOT) on January 13, 2021, which is effective immediately. The Service's Regional Director for Interior Regions 5 and 7 signed a ROD for issuance of an ITP, supported by the Habitat Conservation Plan (HCP), to Washington County (County) on January 13, 2021.

**ADDRESSES:** The RODs are available on the BLM ePlanning project website at <https://eplanning.blm.gov/eplanning-ui/project/1502103/510>. Click the "Documents" link on the left side of the screen to find the electronic versions of these materials. If you would like to request to view a hard copy, please call the St. George Field Office for more information at (435) 688-3200, Monday through Friday, except holidays.

**FOR FURTHER INFORMATION CONTACT:** Gloria Tibbetts, BLM Color Country District Planning and Environmental Coordinator, telephone: (435) 865-3063; address: 176 East DL Sargent Dr., Cedar City, UT 84721; email: [gtibbetts@blm.gov](mailto:gtibbetts@blm.gov). For information on the Amended HCP or ITP, contact Yvette Converse, Field Supervisor, U.S. Fish and Wildlife Service, telephone: (801) 975-3330 ext. 61912; email: [utahfielddoffice\\_esa@fws.gov](mailto:utahfielddoffice_esa@fws.gov). Persons who use a telecommunications device for the deaf may call the Federal Relay Service (FRS) at 1-800-877-8339 to leave a message or question for Ms. Tibbetts or Ms. Converse. The FRS is available 24 hours a day, 7 days a week. Replies are provided during normal business hours.

**SUPPLEMENTARY INFORMATION:** On September 4, 2018, UDOT submitted an application for a ROW grant for the Northern Corridor Project north of the City of St. George, Utah, on BLM-administered and non-Federal lands within the Red Cliffs NCA and Red Cliffs Desert Reserve (Reserve). The Reserve was established for the protection of the Mojave desert tortoise under the 1995 Washington County HCP. The NCA was established through the passage of the Omnibus Public Land Management Act of 2009. The 1995 HCP expired in 2016 and was extended by the Service to allow the County to amend the HCP pursuant to Section 10(a)(1)(B) of the Endangered Species Act (ESA). The Service received an application for an ITP dated January 30, 2015. The associated amended HCP was finalized by Washington County on October 20, 2020. The amended HCP anticipates the Northern Corridor highway, as a potential changed circumstance, would be partially offset with the addition of a new sixth zone to the Reserve (Reserve Zone 6) as the primary conservation strategy. To allow for consideration of and mitigation for the Northern Corridor, the BLM considered amendments to the Red Cliffs NCA and St. George Field Office RMPs.

The BLM and the Service, as joint lead agencies, reviewed the ROW and ITP applications, and the BLM



U.S. DEPARTMENT OF THE INTERIOR  
**BUREAU OF LAND  
 MANAGEMENT**

## Attachment B

# SAN RAFAEL SWELL RECREATION AREA ADVISORY COUNCIL TO HOLD ONLINE MEETING

**PRICE, Utah** – The Bureau of Land Management will hold two meetings of the San Rafael Swell Recreation Area Advisory Council (Council). The first meeting will be held on Feb. 17, 2021, from 8 a.m. to 5 p.m. and will be hosted online. Meeting registration information is available at [https://blm.zoomgov.com/webinar/register/WN\\_xmdv5PSNQcGgBa9WxhLrtg](https://blm.zoomgov.com/webinar/register/WN_xmdv5PSNQcGgBa9WxhLrtg).

The second meeting will be held on April 7, 2021, from 12 p.m. to 5 p.m. and April 8 from 8:30 am to 12 p.m. An online meeting platform and/or teleconference may substitute an in-person meeting if public health restrictions are in place.

The John D. Dingell, Jr. Conservation, Management, and Recreation Act of 2019 established the Council to provide advice and information for the BLM to consider in planning for and managing the San Rafael Swell Recreation Area. The seven-member Council represents a wide range of interests including local government, recreational users, grazing allotment permittees, conservation organizations, expertise in historical uses of the recreation area, and Tribes. Advisory councils provide advice and recommendations to the Secretary of the Interior on public land resource and management issues.

“The BLM looks forward to the Council’s kick-off meeting,” **said Lance Porter, Green River District Manager**. “This is a great opportunity for the BLM to receive feedback about the future management of the San Rafael Swell Recreation Area.”

Agenda topics for the February meeting will include an overview of Dingell Act mandates, an overview of the Price Field Office Resource Management Plan (RMP), nomination of a Council chairperson and vice-chairperson, identification of next steps, and discussion of upcoming RMP amendments. Agenda topics for the April meeting will include agency updates, RMP updates, and discussion of implementation-level plans. The final agendas and meeting registration information (including how to log in and participate via Zoom) will be posted on the Council webpage at <https://www.blm.gov/get-involved/resource-advisory-council/near-you/utah/San-Rafael-Swell-RAC>.

The public is welcome to attend the meetings and will be given an opportunity to address the Council each day. The scheduled times for the public to address the Council are Feb. 17, 2021 from 3:15 p.m. to 3:45 p.m., April 7, 2021 from 4:30 p.m. to 5 p.m., and April 8 from 11 a.m. to 11:30 a.m. Depending on the number of people wishing to comment, the amount of time for an individual’s oral comments may be limited. Written statements to address the Council may also be sent prior to each meeting to the BLM Green River District, Attn: Lance Porter, 170 South 500 West, Vernal, Utah 84078 or via email with the subject line “San Rafael Swell Advisory Council meeting” to [utprmail@blm.gov](mailto:utprmail@blm.gov).

More information about the area can be found at <https://www.blm.gov/visit/search-details/2187/2>.

For additional information about the upcoming meetings, please contact Lance Porter at (435) 781-4400 or [l50porte@blm.gov](mailto:l50porte@blm.gov). Persons who use a telecommunications device for the deaf may call the Federal Relay Service (FRS) at 1-800-877-8339 to leave a message or question for the above individual. The FRS is available 24 hours a day, seven days a week. Replies are provided during normal business hours.

*The BLM manages more than 245 million acres of public land located primarily in 12 Western states, including Alaska. The BLM also administers 700 million acres of sub-surface mineral estate throughout the nation. The agency’s mission is to sustain the health, diversity, and productivity of America’s public lands for the use and enjoyment of present and future generations. Diverse activities authorized on these lands generated \$111 billion in economic output across the country in fiscal year 2019—more than any other agency in the Department of the Interior. These activities supported more than 498,000 jobs.*

## MORE PRESS RELEASES

### RELEASE DATE

Thursday, January 14, 2021

### ORGANIZATION

Bureau of Land Management

### OFFICE

Green River District

### CONTACTS

**Name:** Lola Bird

**Email:** [lbird@blm.gov](mailto:lbird@blm.gov)

**Phone:** 801-530-1033





Attachment C

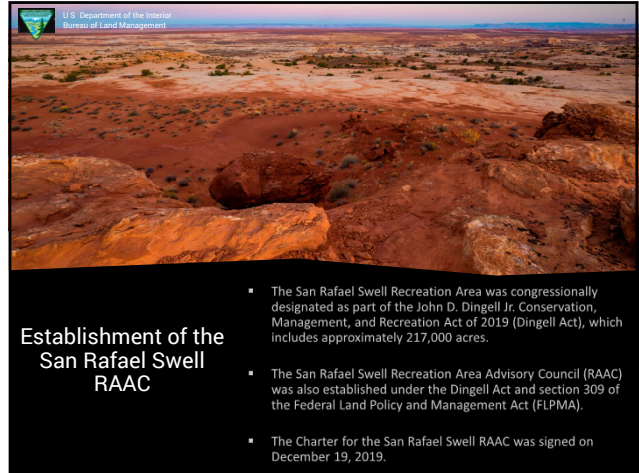
**San Rafael Swell Recreation Area Advisory Council  
Meeting Agenda  
Feb. 17, 2021  
\*Meeting to be held online  
Via Zoom**

<b>TIME</b>	<b>TOPIC</b>	<b>PRESENTER</b>
8 a.m.	Public sign in and members join online.  Technical tips for attendees	Rachel Wootton, Public Affairs Specialist
8:30 a.m.	Welcome and introductions	Lance Porter, Green River District Manager
8:45 a.m.	Overview of charter and council members roles and responsibilities.  Purpose: Review council charter and discuss council expectations.	Amber Koski, Green River District, Planning and Environmental Coordinator
9:15 a.m.	Overview of the Dingell Act legislated mandates in the San Rafael Swell Recreation Area  Overview of resource management plan (RMP) revision needs. Review Price RMP decisions that need to be addressed in future RMP amendments.  Review RMP decisions and future activity-level decisions with Council. -Key decisions, what is the same or different from existing management? -Discussion and questions from Council members on recommendations to the BLM.  Purpose: To orient the discussion and provide an overview of background documents.	Stephanie Howard, Green River District Branch Chief for Planning  Chris Conrad, Price Field Office Manager
10 a.m.	Break and reminder to public about the opportunity to participate in the public comment period.	Amber Koski
10:20 a.m.	Overview continued	Stephanie Howard
11:30 a.m.	Review of council chairperson and vice chairperson duties. Select chairperson and vice chairperson.	Amber Koski

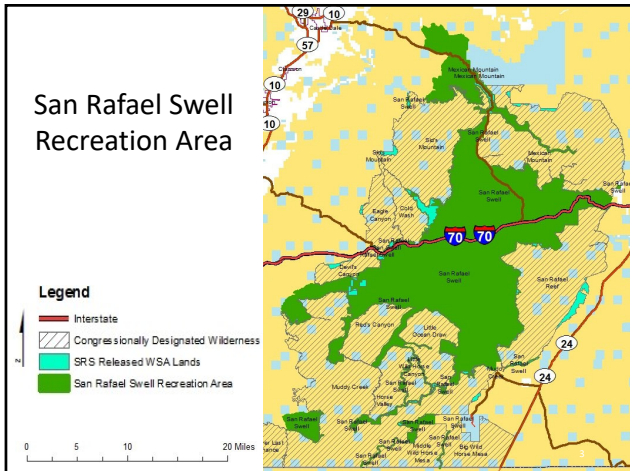
	Purpose: Select a chairperson and vice chairperson, discuss council member duties	
11:45 a.m.	Select chairperson and vice chairperson	Council members
12 p.m.	Lunch	
1:00 p.m.	Next Steps -Overview of campgrounds/visitor services in the San Rafael Swell Recreation Area, and ongoing activities  Purpose: Provide additional information on campgrounds and visitor services	Jaydon Mead, Price Field Office Outdoor Recreation Planner  Myron Jeffs, Price Field Office Outdoor Recreation Planner
1:45 p.m.	Introduce and discuss San Rafael Swell travel management planning.  Purpose: Discuss ongoing travel planning in the San Rafael Swell Recreation Area planning area.	Dan Kauffman, Green River District, Planning and Environmental Coordinator
2:30 p.m.	Break	
2:45 p.m.	Overview of Utah Advisory Council web pages.  Purpose: Show council members and the public where information about the San Rafael Swell Advisory Council is located	Amber Koski
3:00 p.m.	Discuss public comment period process	Rachel Wooten
3:15 p.m.	Public comment period.  The public comment period begins at 3:15 p.m. and will go until 3:45 p.m. or until interested individuals have had the opportunity to comment.	
3:45 p.m.	Council discussion.  Purpose: Allow the council to discuss topics, ask questions and provide feedback to the BLM.	Council members
4:45 p.m.	Wrap-up discussions and finalize next meeting date, location, and agenda items	Council members
5 p.m.	Adjourn	



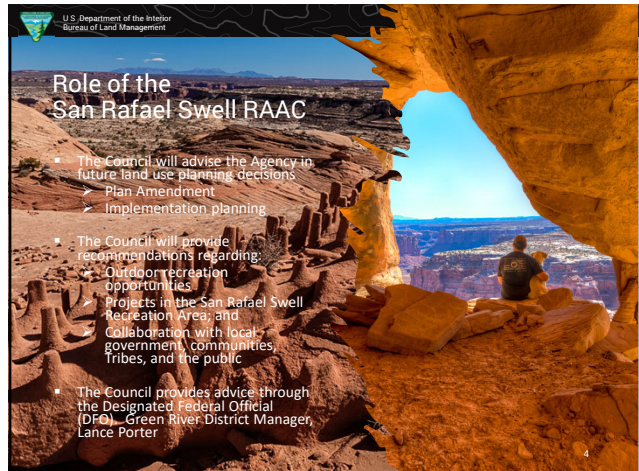
1



2



3



4

U.S. Department of the Interior  
Bureau of Land Management

## Members of the San Rafael Swell RAAC

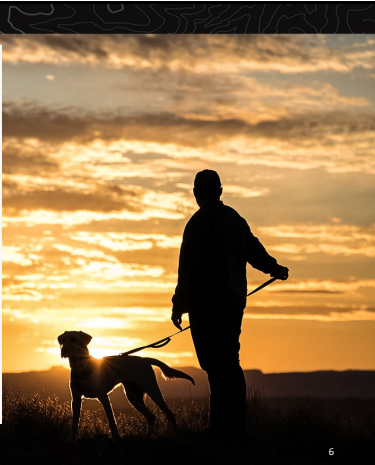
NAME	REPRESENTATIVE OF	TERM EXPIRATION
Wade Allinson	Historical uses of the Recreation Area	September 10, 2023
Elven Leon McElprang	Grazing allotment permittees	September 10, 2023
Rodney Player	Non-motorized recreational users	September 10, 2022
Leslie Wilberg	Motorized recreational users	September 10, 2022
Kent Wilson	Emery County Commission	September 10, 2023
Sue Bellagamba	Conservation organizations	January 15, 2024
Vacant	Elected leader of a federally recognized tribe	N/A

5

U.S. Department of the Interior  
Bureau of Land Management

## Advisory Councils

"The objective of an Advisory Council ... is to provide expert counsel of concerned, knowledgeable citizens and public officials regarding both the formulation of operating guidelines and the preparation and execution of plans and programs for the use and management of public lands, their natural and cultural resources, and the environment."



6

U.S. Department of the Interior  
Bureau of Land Management

## Advisory Councils Continued

- Resource Advisory Councils (RACs) help the BLM's mission to sustain the health, diversity, and productivity of America's public lands for the use and enjoyment of present and future generations.
- RACs are an invaluable resource



7

U.S. Department of the Interior  
Bureau of Land Management


## San Rafael Swell RAAC - Charter

### Authority

- The Council is regulated by the Federal Advisory Committee Act (FACA), as amended (5 U.S.C. Appendix 2).
- ... Subject to standards and procedures for the creation, operation, and termination of BLM advisory councils.




8



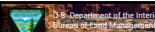

## San Rafael Swell RAAC – Council Members Roles and Responsibilities

- The Secretary shall appoint the members of each resource advisory council.
- The Secretary shall appoint at least 1 elected official of general purpose government serving the people of the area to each council.
- An individual may not serve concurrently on more than 1 resource advisory council.
- The council will advise the designated official regarding the preparation, amendment and implementation of the San Rafael Swell Recreation Area management plan.
- Resource advisory councils shall not provide advice on the allocation and expenditure of funds.
- Resource advisory councils shall not provide advice regarding personnel actions.



9

9

## San Rafael Swell RAAC – Council Members Roles and Responsibilities

- Attend meetings and field trips.
- Participate in public discussion of issues during meetings.
- Provide advice to the Designated Federal Officer (DFO) if necessary.
- Maintain up-to-date knowledge of issues affecting the committee's geographic area.
- Provide BLM officials with opinions and advice that represent the advisory committee member's point-of-view; the member's experience and knowledge about the issue; and their reflection on data presented.
- Advise the DFO when business scheduled to come before the advisory committee may be a potential conflict of interest for the member.

10

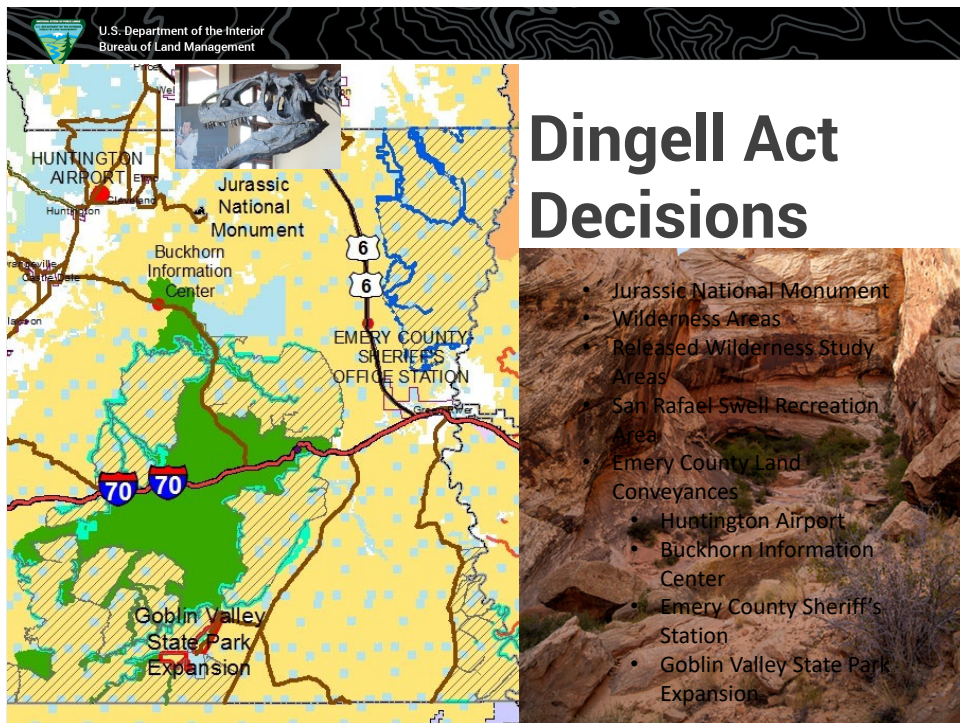
10



## San Rafael Swell Recreation Area Advisory Council (RAAC)



Questions ?



U.S. Department of the Interior  
Bureau of Land Management

# Dingell Act Requirements

Protect and enhance recreational, natural, and educational resources

U.S. Department of the Interior  
Bureau of Land Management

# Dingell Act Requirements

"No new permanent or temporary roads...shall be constructed"

U.S. Department of the Interior  
Bureau of Land Management

**Dingell Act Requirements**

"Motorized vehicles... shall be permitted only on [designated] roads"

The image shows a map of the San Rafael Swell (2) area, which is a large, flat, open landscape. The map is overlaid with a grid of roads and trails. Several roads are marked with route numbers: 7, 10, 29, 57, 70, and 24. The area is shaded in yellow and green, indicating different land management zones. A large, semi-transparent circular graphic is overlaid on the map, showing a close-up of the road network. The background of the slide is a photograph of a desert landscape with a dirt road and a few people on motorcycles.

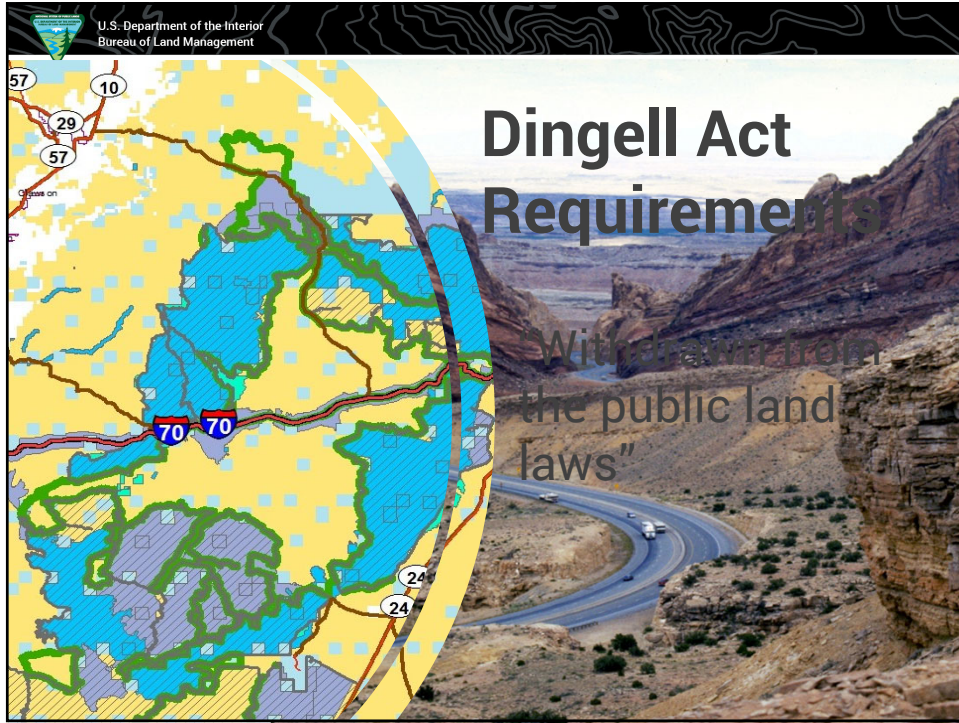
U.S. Department of the Interior  
Bureau of Land Management

**Dingell Act Requirements**

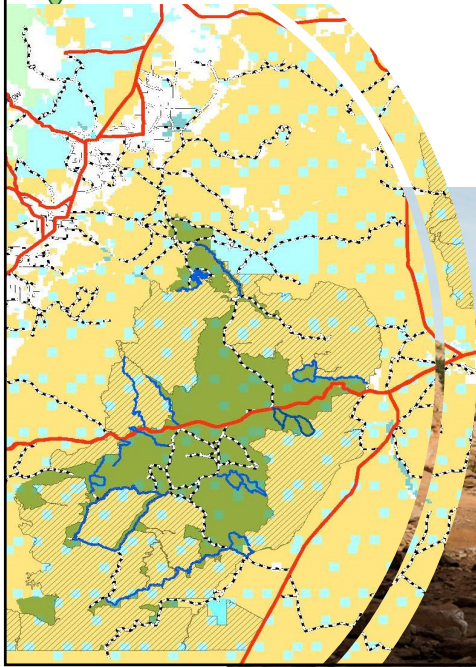
"Grazing of livestock if established before the Act... shall be allowed to continue"

The image shows a map of the San Rafael Swell (2) area, similar to the one above. The map is overlaid with a grid of roads and trails. Several roads are marked with route numbers: 10, 57, 29, 70, and 24. The area is shaded in yellow and green, indicating different land management zones. A large, semi-transparent circular graphic is overlaid on the map, showing a close-up of the road network. The background of the slide is a photograph of a grassy field with several black cows grazing.






U.S. Department of the Interior  
Bureau of Land Management

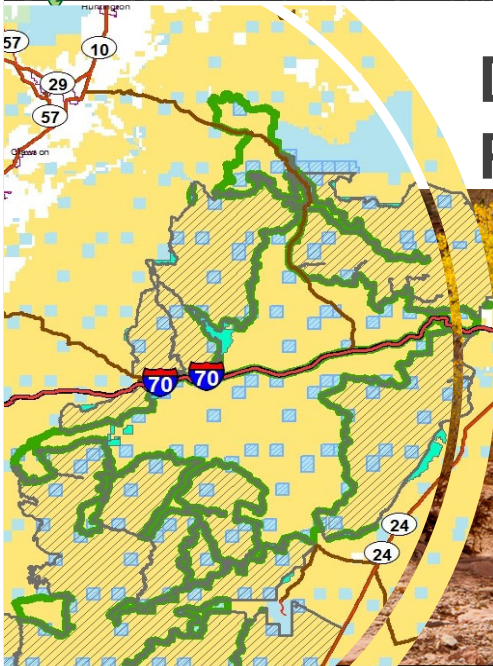


# Dingell Act Requirements

Conduct a study of nonmotorized recreation trail opportunities including bicycle trails




U.S. Department of the Interior  
Bureau of Land Management



# Dingell Act Requirements

"Any land acquired by the United States [within the Rec Area boundary] shall become part of the Recreation Area"





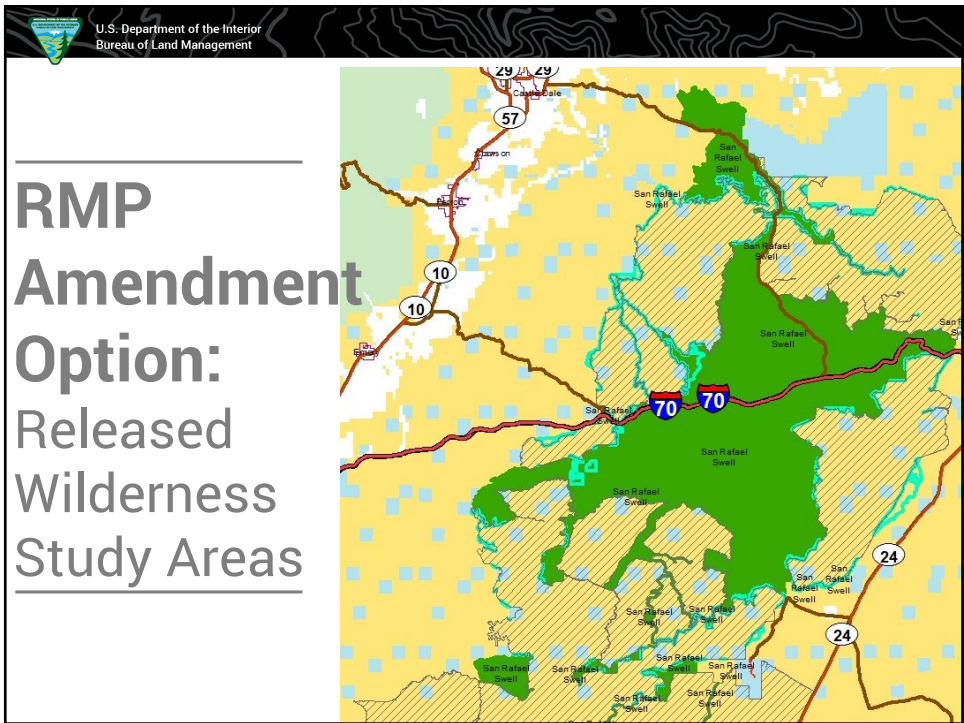
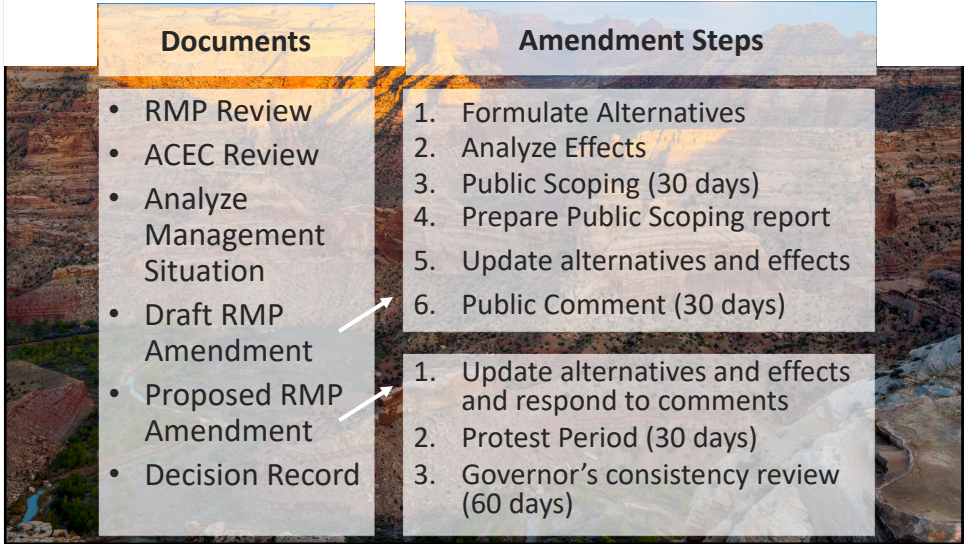
U.S. Department of the Interior  
Bureau of Land Management

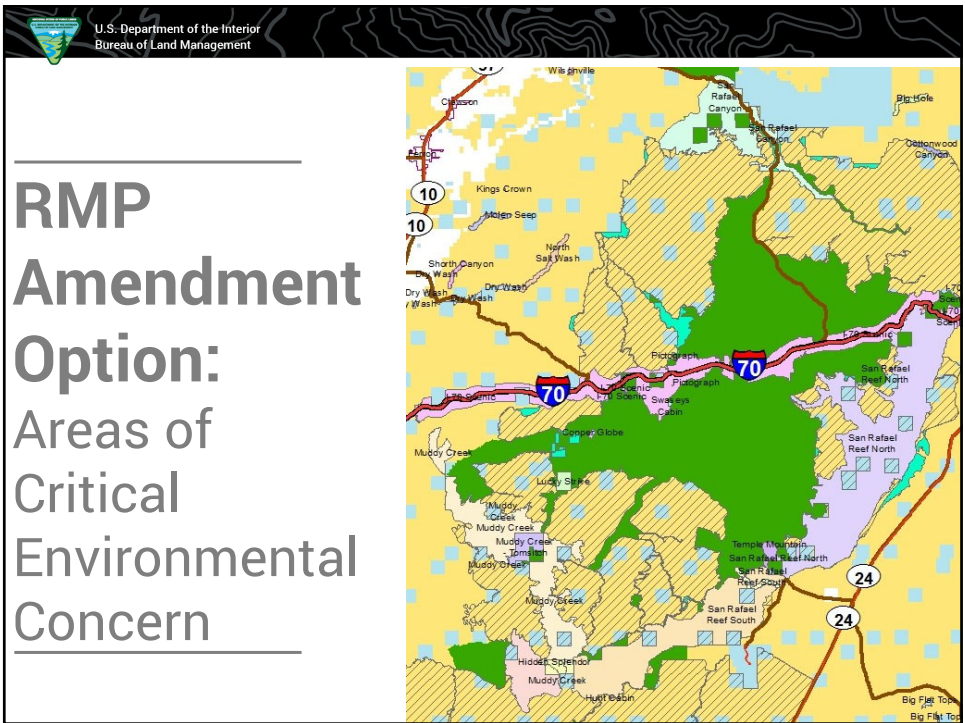
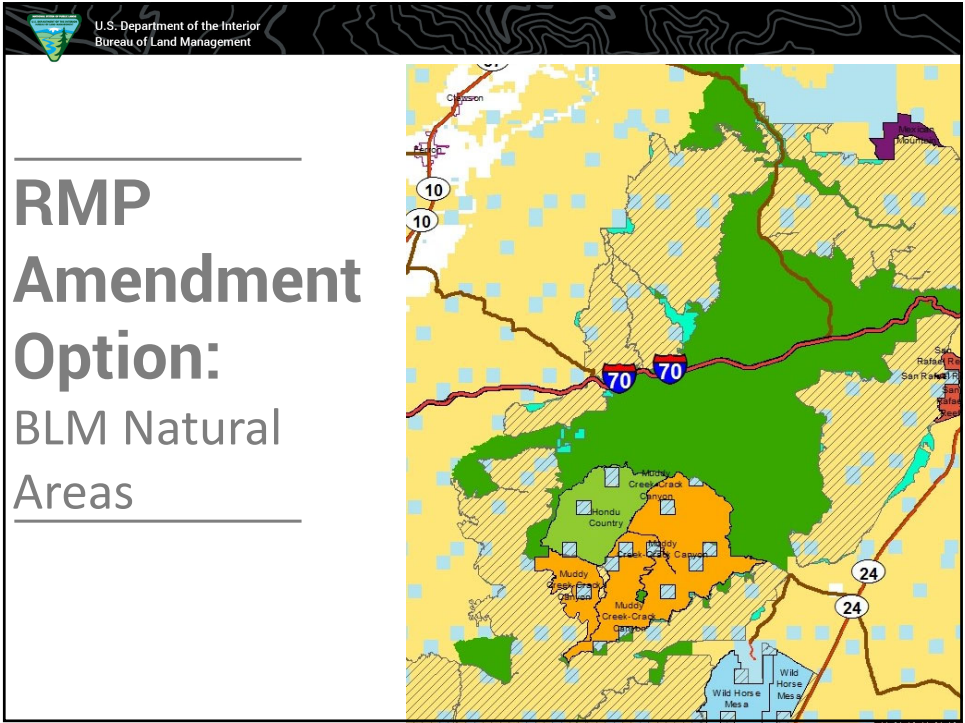
# Dingell Act Requirements

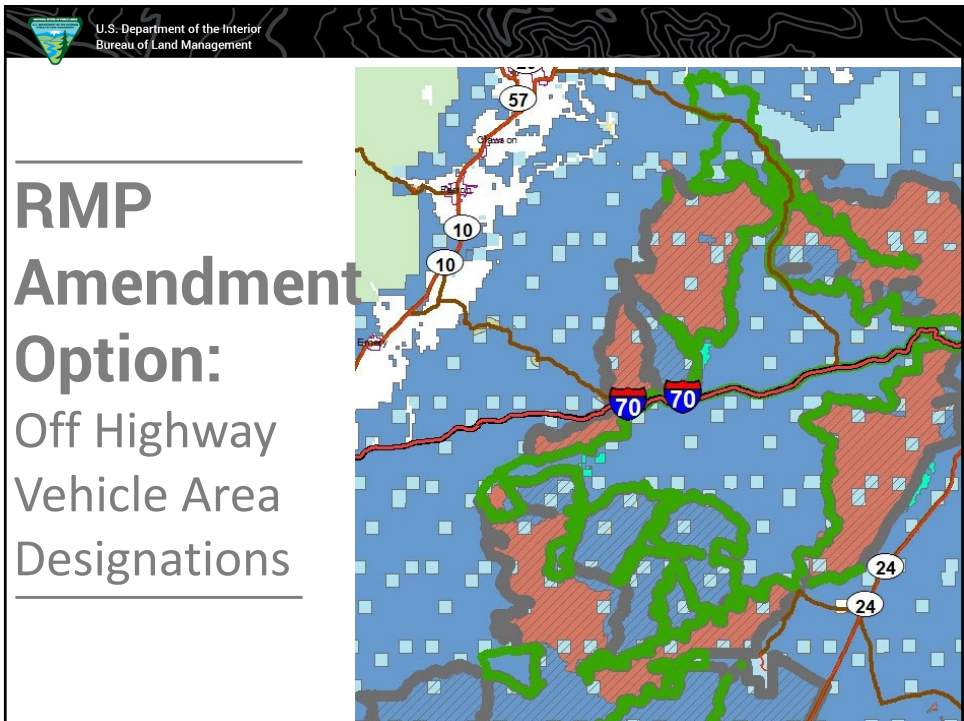
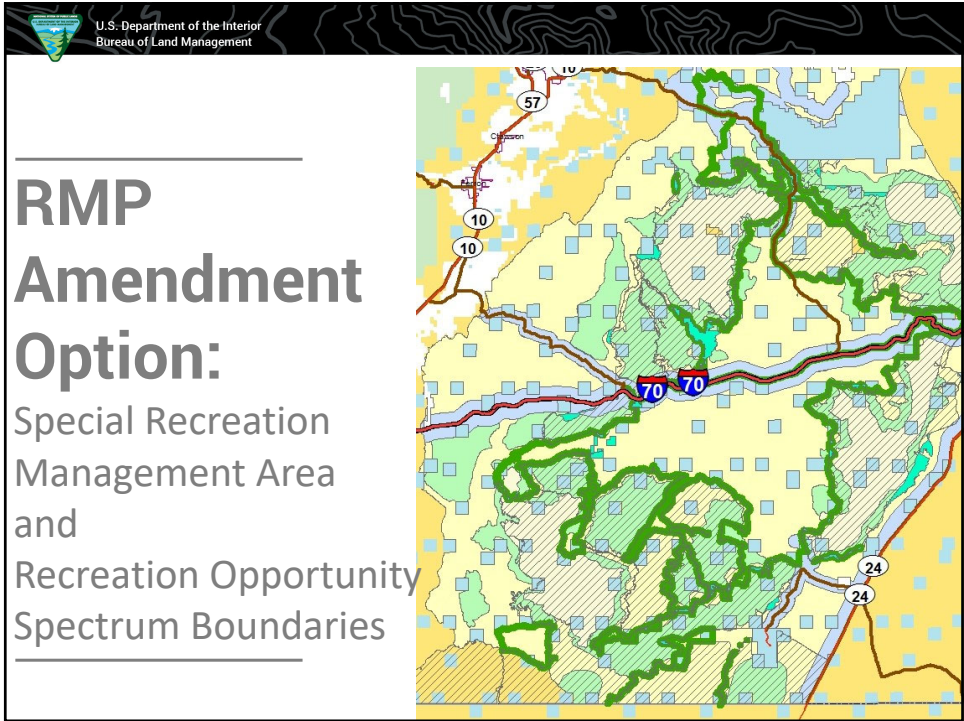
“Prepare a [management] plan”

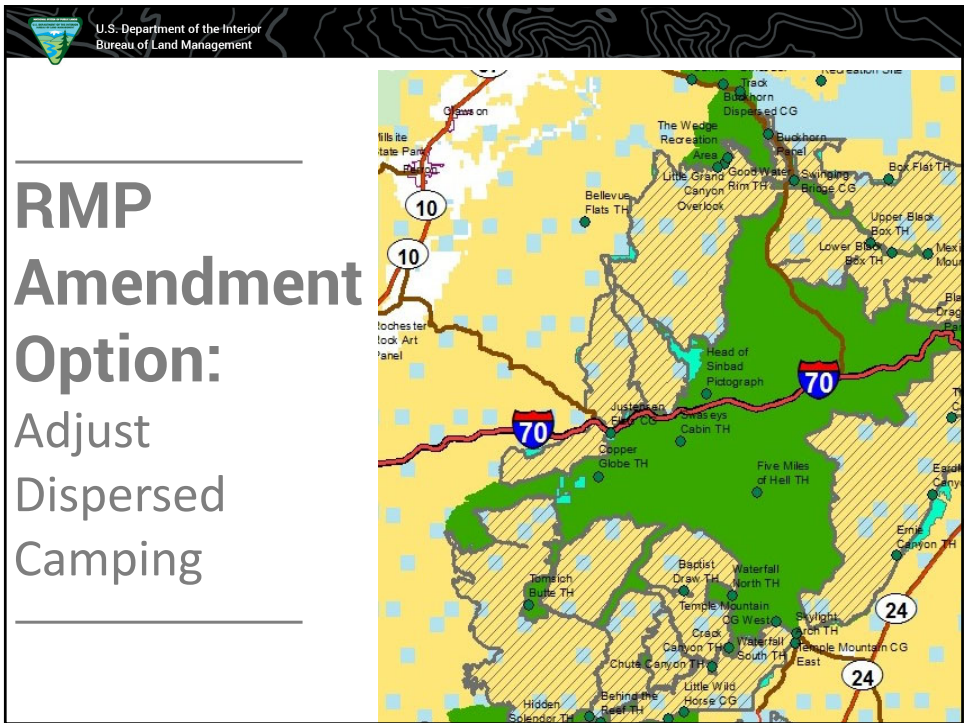
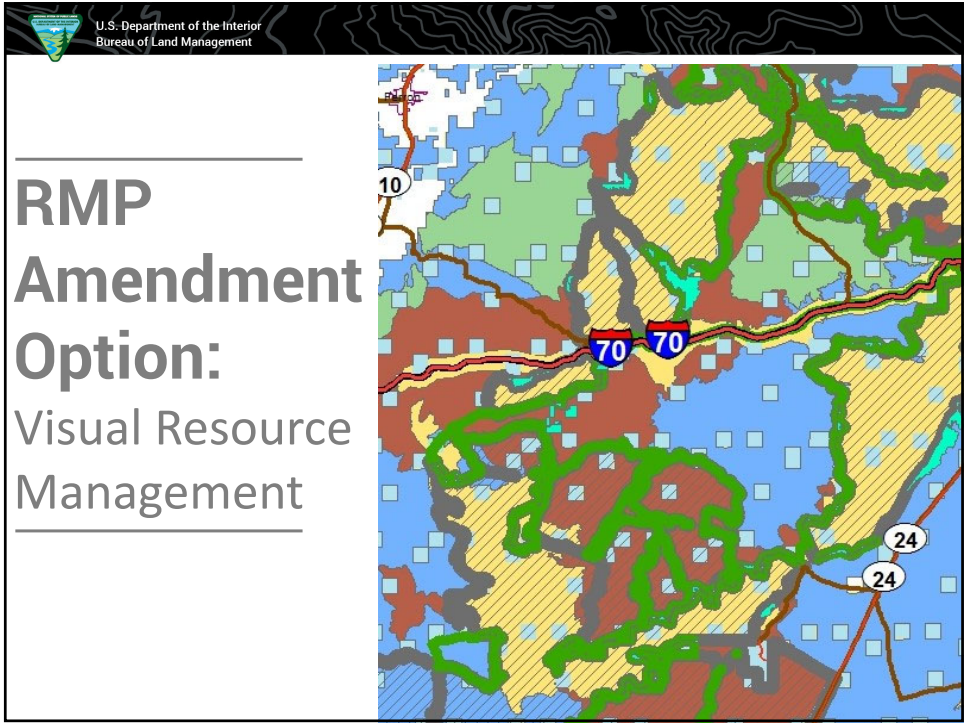
<p><b>Resource Management Planning</b> (sets the rules)</p>	<p><b>Implementation/Activity Plans</b> (conforms to the rules)</p>
<p><b>Results in:</b></p> <ul style="list-style-type: none"> <li>• Overall Goals</li> <li>• Resource Objectives</li> <li>• Allowable Uses</li> <li>• Management Actions to maintain, restore, or improve desired conditions</li> </ul>	<p><b>Results in:</b></p> <ul style="list-style-type: none"> <li>• Site specific use decisions</li> <li>• Go/no-go project decisions</li> </ul>

# RMP Amendment Process









U.S. Department of the Interior  
Bureau of Land Management

# RMP Amendment Schedule

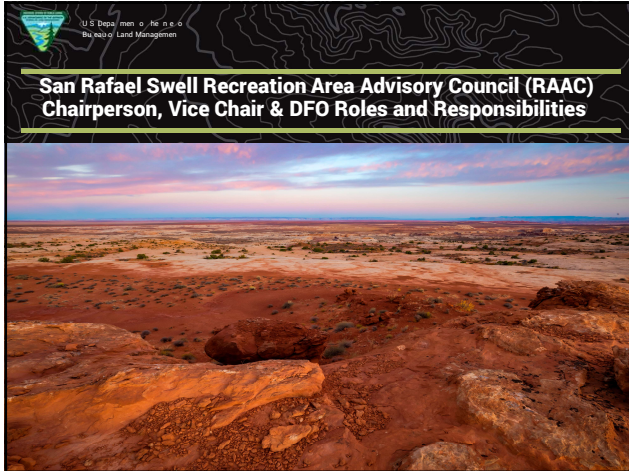
Dingell Act	Current Projection
March 2021 <ul style="list-style-type: none"> <li>• Nonmotorized Trail Plan</li> </ul> March 2024 <ul style="list-style-type: none"> <li>• Management Plan</li> </ul>	

U.S. Department of the Interior  
Bureau of Land Management

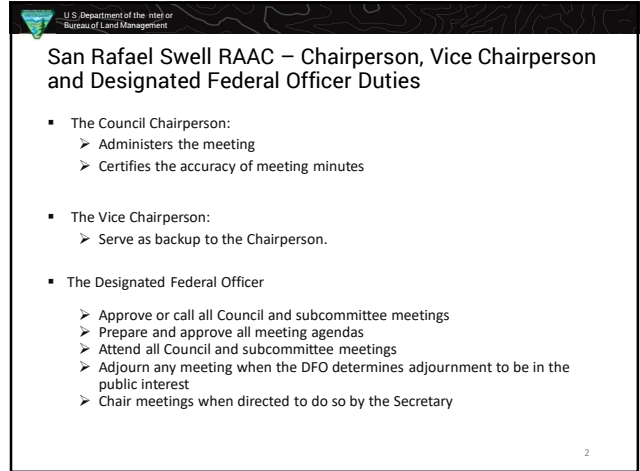
# Implementation Projects

Process
<ul style="list-style-type: none"> <li>• Design Project</li> <li>• Conduct Surveys</li> <li>• Prepare NEPA</li> <li>• Consultation</li> <li>• Issue Decision</li> <li>• Implement</li> </ul>





1

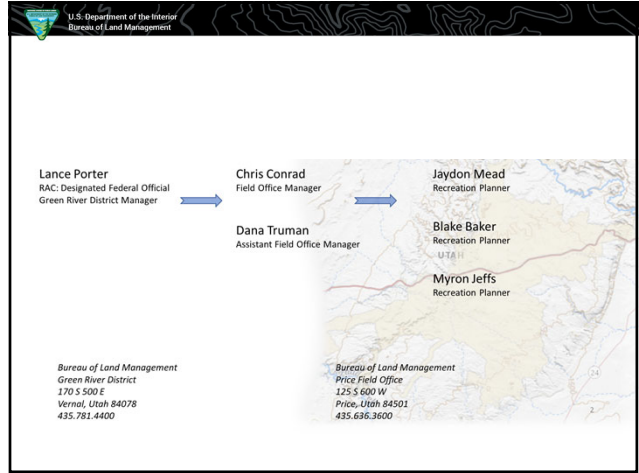


2

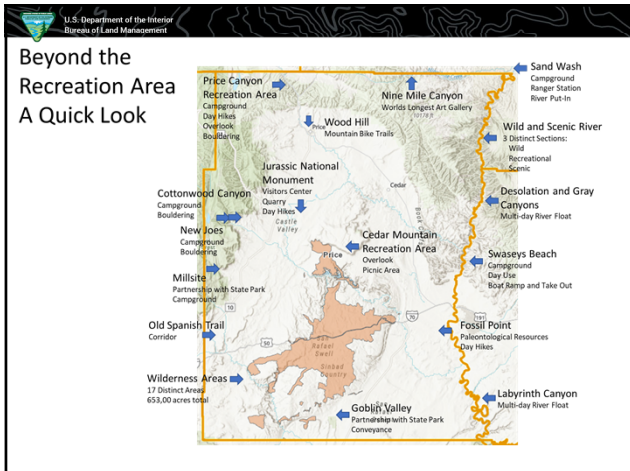




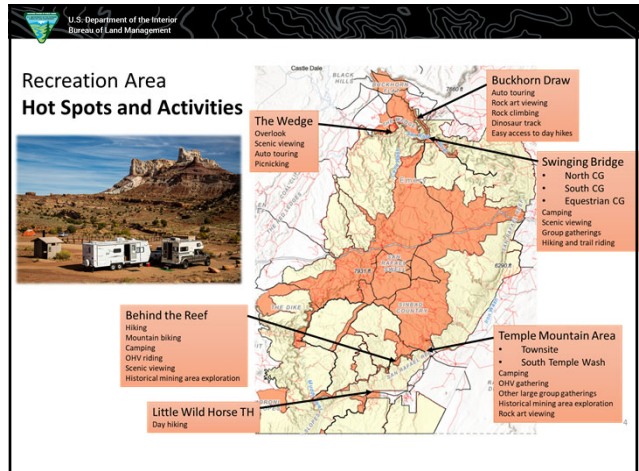
1



2



3



4

U.S. Department of the Interior  
Bureau of Land Management

## Recreation Area Hot Spots and Activities

- Good Water Rim**  
Mountain biking  
Camping  
Sight seeing
- Wickiup**  
Group gathering  
OHV riding
- Temple Mtn**  
Single Track  
Motorcycle Trails
- Sids Mtn Trails**
  - Eva Conover
  - Devils Racetrack
  - Coal Wash
  - Cane Wash
- OHV riding  
Hiking and trail riding
- Tomsich Butte**  
Day hiking  
River rafting  
Historical mining area exploration
- Hidden Splendor**  
Day hiking  
Historical mining area exploration  
Camping  
Scenic viewing  
River rafting

5

U.S. Department of the Interior  
Bureau of Land Management

measurement points were not set for the Recreation Area boundaries

- In fall 2020 we did adjust some measurement points to collect more specific data to the Recreation Area
- Field Office wide 2020 had 434,764 visitor days

**Traffic Counters**  
8 installed in the Recreation Area 3 years ago  
14 Recently installed in the Recreation Area  
Plans with Emery County to install more!

- Roughly 3,000 bikers per year (from an infrared traffic counter)
- 5 year average visitation at the Swinging Bridge Campgrounds is roughly 3,500 individuals
- Little Wild Horse Canyon  
Roughly 30,000 hikers per year (from an infrared traffic counter)

6

U.S. Department of the Interior  
Bureau of Land Management

## Recreation Area Facilities

- Developed Fee Campgrounds (2)**
- Dispersed camping authorized throughout the Recreation Area
- Toilets (14)**
- Other:**
  - Parking Areas
  - Trailheads
  - Kiosks
  - Or other type of facility

7

U.S. Department of the Interior  
Bureau of Land Management

## Recreation Use Permits in the Price Field Office Fee Proposal

This presentation will demonstrate that:

- The fee proposal complies with FLEEA
- We have demonstrated the need to increase and establish fees
- We have provided for and considered public comment

**Implement New Fees**

- 5/ste/night To \$15/ste/night
- 5 locations distant from Recreation Area
- 4 locations in the Recreation Area
  - Temple Mountain Townsite
  - Buckhorn Wash
  - The Wickiup
  - The Wedge
- 3 locations along the border
  - South Temple Wash
  - Little Wild Horse
  - San Rafael Reef

This plan approved by the RAC resulted in two primary actions

Dispersed camping is still allowed throughout the Recreation Area

8

U.S. Department of the Interior  
Bureau of Land Management

## Recreation Area Visitor Fees and Camping

In-progress implementation actions:

- ✓ Buckhorn Draw  
10 miles long, 32 sites
- ✓ South Temple Wash
- ✓ Temple Mountain Townsite

Federal Register Notice  
EA's to complete work  
Contracts to Purchase Supplies  
Implementation: BLM, Partners, Volunteers  
Recreation.gov?

9

U.S. Department of the Interior  
Bureau of Land Management

hours in FY 2020

- ❖ Partners obtain grants of their own in support of projects
- ❖ Emery County Trails Committee and Road Department
- ❖ Emery Telcom
- ❖ Utah State Parks

USU Eastern Sage Riders

Horseman

Dedicated Hunters

Emery Telcom Emery County

Castle Country OHV Club

10

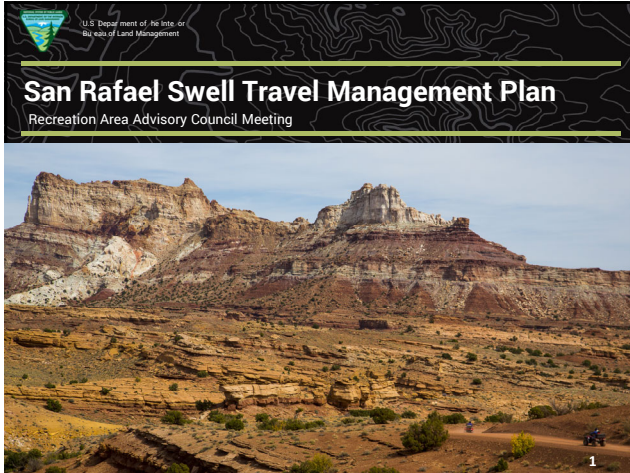
U.S. Department of the Interior  
Bureau of Land Management

**The Wedge: Camping and more**  
Good Water Rim Trail  
Overlook  
Hub of activity

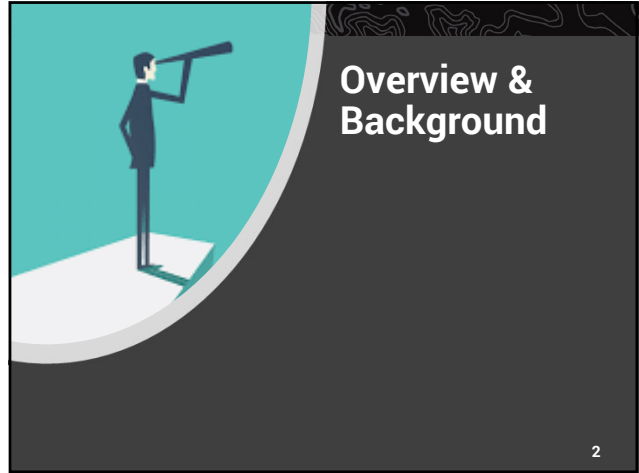
**Fullers Bottom**  
Owned by DWR  
Continue to work on access improvements  
BLM Easement

**Justensen Flat**  
Hub of activity  
Easily accessible  
Access to several locations and activities

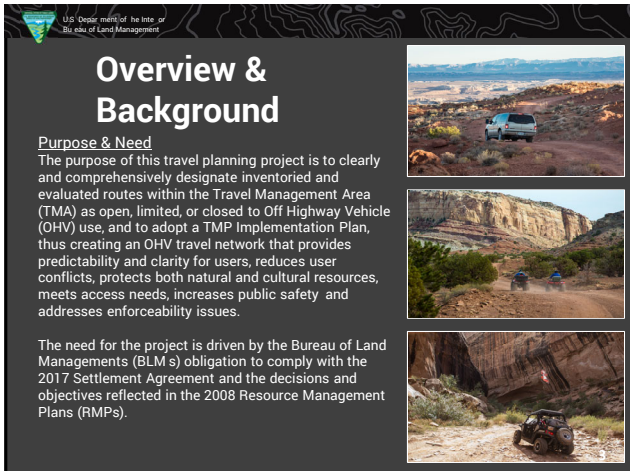
**Non-motorized trail study**  
As required by the Dingell Act, we are in the process of putting together an inventory of trails and opportunities for non-motorized trails



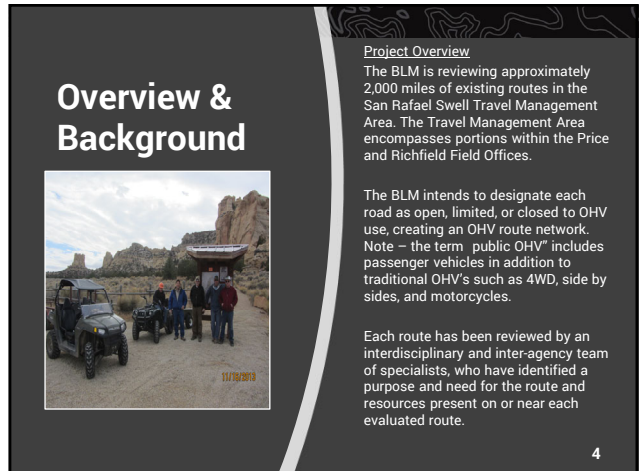
1



2



3



4

## Overview & Background

The TMP would ultimately designate a network of routes throughout the TMA as OHV-open, OHV-closed, or OHV-limited, and incorporate implementation actions (signs, reclamation, etc.) to ensure that the route designations are made clear to users on the ground.

**ROUTE DESIGNATIONS DEFINED**

**Open:** A route that is recommended open for all modes of travel and uses.

**Limited:** A route that is recommended for limited use by travel mode, user, or season of use.

**Closed:** A route that is recommended for permanent closure to OHV use, though authorized use may continue. An OHV closed route may be reclaimed, barriers may be installed, and signs may be placed.

5


5

## Overview & Background

*Potential Route Designations Cont.*

This Travel Plan will not result in any new roads. This Travel Plan will not make OHV decisions on lands owned or managed by private, State, or Federal agencies other than BLM, though routes over non-BLM lands may be displayed on maps for connectivity and navigation purposes.


This travel planning effort and resulting TMP are not intended to provide evidence, bearing on, or address the validity of any Revised Statute 2477 (R.S. 2477) assertions.



6

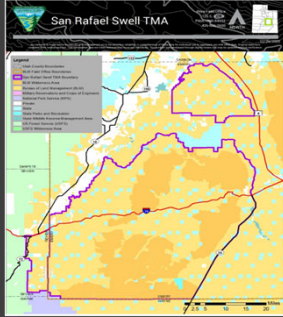
6

**FIELD OFFICE BOUNDARIES**



How can you help us?

**MAP OF TMA BOUNDARIES**




What can we do better?

7

7

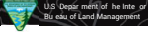
## Public Feedback Opportunities & Highlights

How can you help us?  
What can we do better?



8

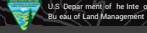
8



## Public Feedback Opportunities

- Information Gathering (Ongoing)
- Route Evaluation Preparation (Completed)
- Route Evaluation (On-going)
- **Public Feedback I - Public Scoping (Feb 1 – Mar 3, 2021)** ← WE ARE HERE!!!
- Alternative Development (tentative Mar/June 2021)
- **Public Feedback II - Public Comment Period (tentative June 2021)**
- Preferred Route Network (tentative June 2021)
- Final Route Work Approval (tentative July – Oct 2021)
- Prepare/Sign Plan (tentative Nov 2021)
- Produce Maps (On-going)
- Rehabilitate Closed Routes (On-going)

9



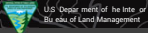

## Ways to comment during scoping.

- There are multiple ways to comment on this project however the preferred method is through the ePlanning website. To access the ePlanning webpage for this project go to the following link: <https://go.usa.gov/xy6uP>
- Once there you will then be able to use the Participate Now Tab and leave a scoping comment on the project or comment via the interactive web map.
- You can also email your comments to the following email address: [blm\\_ut\\_pr\\_comments@blm.gov](mailto:blm_ut_pr_comments@blm.gov)
- If these methods do not work, you can also mail comments post marked before March 4th, 2021, to the following address:  
 Price Field Office  
 125 South 600 West  
 Price, Utah 84501

10

9

10


## Points of Helpful Consideration

- \*Are there any resources in the area that a particular road affects that we should address by either disclosing or mitigating?
- \*Do the public know of any roads that have a particular OHV purpose or need that we should consider?
- \*Does the public have a strong opinion on any routes with consideration to whether OHV use should be allowed there and why?
- \*Are there actively used routes that we should consider that were not considered?
- \*Did we miss any roads/routes?

Submit Public Comment

11


11



## Public Outreach Highlights

- Public News Release – 15 January
- Social Media Posts by public affairs Ongoing
- Cooperator Agreements with multiple state agencies Ongoing
- Emailed 15 tribal entities the public news release and invited them to the online scoping meeting Jan 2020
- In total, emailed over 140 special interest groups cooperators interveners or private citizens interested in the San Rafael Swell TMP process – Jan 2020
- Online Scoping Meeting 2 & 4 Feb 2020


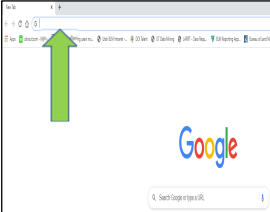
San Rafael Swell TMP	# of Attendees	Entries in Q&A
Meeting 1 - 2/2	26	8
Meeting 2 - 2/4	15	16
<b>Total</b>	<b>41</b>	<b>24</b>



12

12

**Learn to Comment in 4 Easy Steps**


**STEP 1:** On a computer, navigate to the website by copying the following link into your web browser of choice and hit enter. The project website page is listed below.

<https://go.usa.gov/xy6uP>

13

13

**ePlanning**



**STEP 2:** Click on the Participate Now Tab

14

14

**Participate Now**

The following participation periods are open for submitting feedback on the listed document(s) and/or map(s).

Document/Map Name	Type	Period	Status	Submission Count	Participate
2020-12-17/Jan2021-DD-RMP-07-08B-2021-88C-Public	Document	12/17/2020 - 01/19/2021	Open	2	<a href="#">Participate Now</a>

**STEP 3:** This will lead you to another page. Click on the Participate Now a second time Tab

15

15

**1 Your Information**

**Comment Classification**

Response Type:  Delivery Type:  Receipt Date:

Subject:

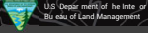
Comment:

**STEP 4:** Fill out the appropriate information and comment on the San Rafael Swell Travel Management Plan.

16

16





## Comment Tool & Interactive Map Instructions

- 1). Copy the following link into your browser and hit enter. It will navigate you to the project website in ePlanning: <https://go.usa.gov/xy6uP>
- 2). Click the Participate Now (Green Button) on the main project page.
- 3). Click on the Participate now button again.
- 4). Fill in Required Comment Fields & submit your comment.

**Interactive Map Comment Tutorial**

- 1). Navigate to the project ePlanning link: <https://go.usa.gov/xy6uP>
- 2). Click on the Participate Now tab for the interactive map.
- 3). Click on the "Add New Comment Tool" for the interactive map.
- 4). Select Existing Route. Then select the route you want to comment on.
- 5) The "Comment Box" will pop up. Fill out the required fields and leave a comment.

17

17



## Questions

18

18

