



U.S. Department of the Interior  
Bureau of Land Management

# EMERGENCY CLOSURE ORDER

## Temporary Emergency Closure of BLM-Managed Public Lands South of New Hogan Lake

**Action:** Under authority of the Federal Land Policy and Management Act of 1976 (43 U.S.C. 1701, *et seq.*), as amended, and pursuant to 43 CFR 8364.1, the Bureau of Land Management (BLM) hereby provides notice that effective February 15, 2021, at 12:00 AM, public lands described below are closed to target shooting. This closure is necessary to protect survey workers in the performance of their duties, while conducting fieldwork during the specified timeframe.

**Affected Area:** This closure applies to public lands managed by the Bureau of Land Management Mother Lode Field Office south of New Hogan Lake along Hogan Dam Road in Calaverasnot County, California. The closure area includes public lands within T3N R11E Sec. 17 (see attached map).

**Prohibitions:** The public must not participate in target shooting activities. All Forms of target shooting are prohibited during the specified timeframe.

**Dates:** This temporary closure is effective at 12:00 AM on Monday, February 15, 2021, through March 1, 2021, at 11:00 PM or until rescinded, whichever comes first.

**Supplemental Information:** No exceptions. All forms of target shooting are prohibited during the specified timeframe to provide a safe working environment for field personnel.

**Penalties:** Any person who violates this may be tried before a United States Magistrate and fined in accordance with 18 U.S.C. 3571, imprisoned for no more than 12 months, or both.

**Effective:** This Order is effective at 12:00 AM on Monday, February 15, 2021.

For questions, please call 916-941-3101, Monday – Friday, 8:00 a.m. – 4:00 p.m. or email [BLM CA Web ML@blm.gov](mailto:BLM_CA_Web_ML@blm.gov).

Signed by:

---

Mother Lode Field Manager

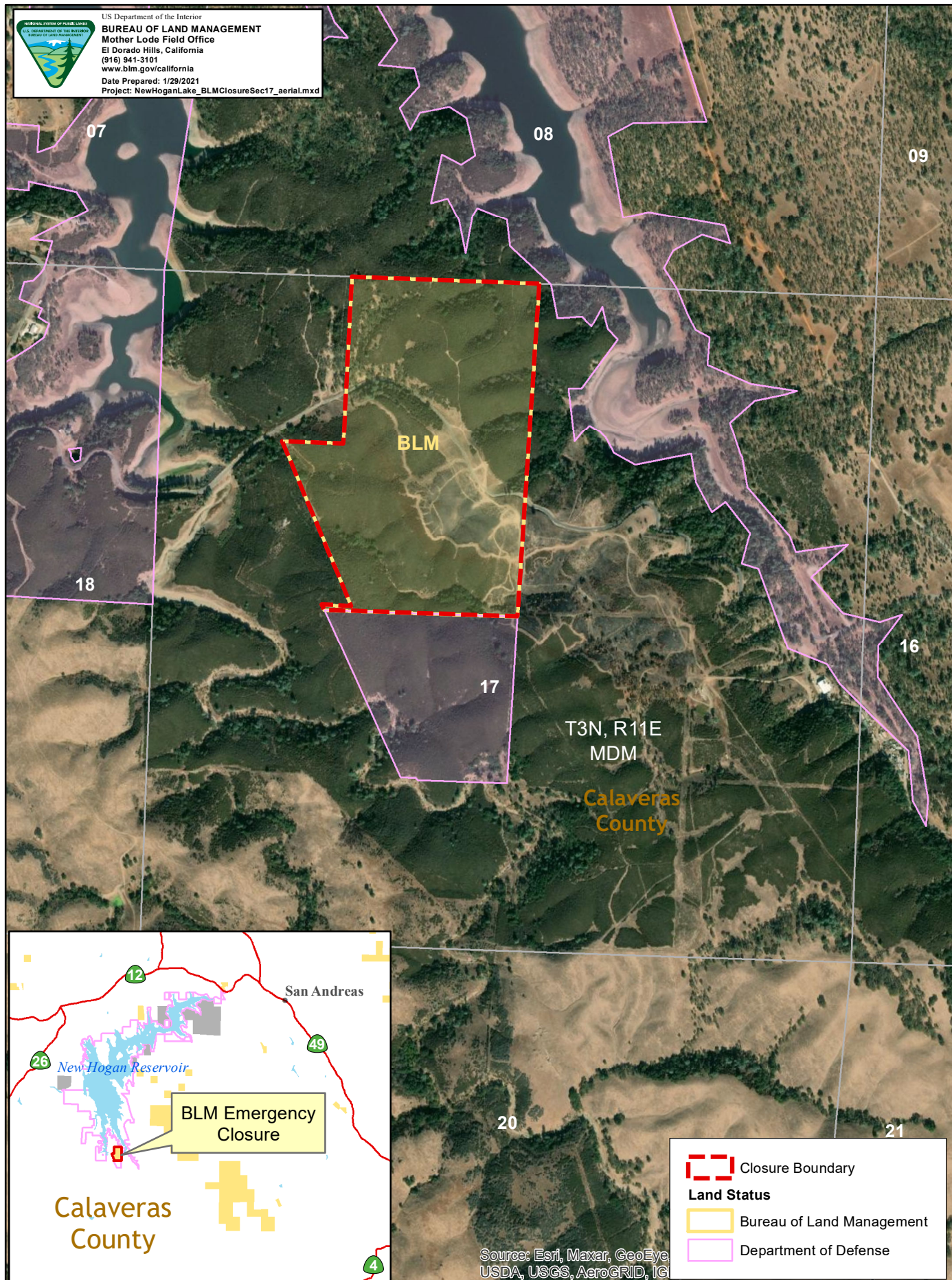
Date



# BLM Emergency Closure - New Hogan Lake



US Department of the Interior  
**BUREAU OF LAND MANAGEMENT**  
Mother Lode Field Office  
El Dorado Hills, California  
(916) 941-3101  
www.blm.gov/california  
Date Prepared: 1/29/2021  
Project: NewHoganLake\_BLMClosureSec17\_aerial.mxd



1:12,500

R11E

1 inch = 1,042 feet