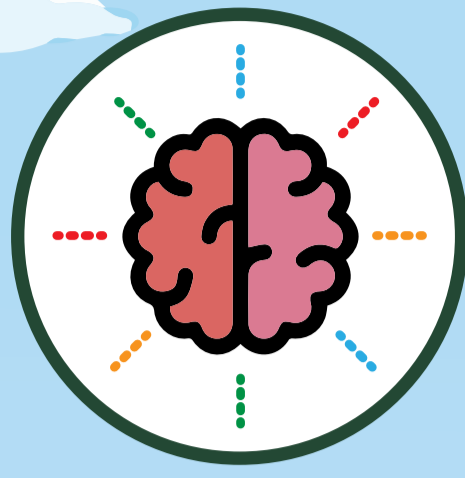
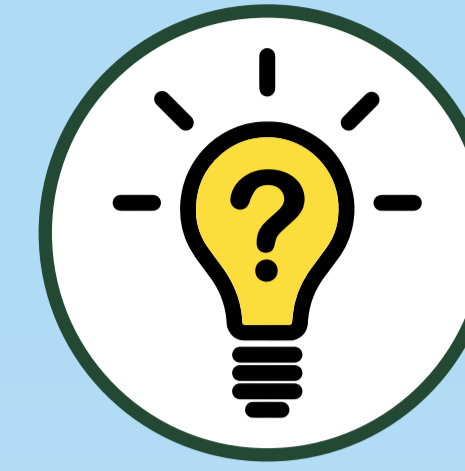


What it takes to be a successful ENVIRONMENTAL EDUCATOR



CREATIVITY
You keep programs fun and engaging. You come up with ways to explain ideas that appeal to all sorts of different learning styles.



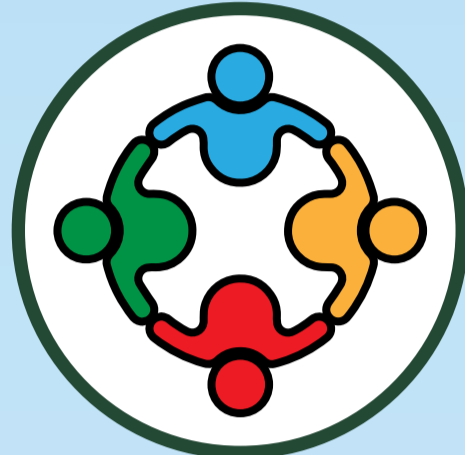
CURIOSITY
You have an desire to learn! You are a keen observer of nature and are constantly looking at things in new and different ways.



COMMUNICATION
You can talk with audiences of all different ages, backgrounds, interests and perspectives and make science fun and exciting.



INCLUSIVITY
You create learning environments in which everyone feels welcome, valued, safe, and empowered.



TEAMWORK
You are ready to help you team to be successful no matter the task.



PLAYFULNESS
You are always willing to try new things, be silly, and look at the world from unexpected angles.



PATIENCE
No matter how long it takes kids to put on snowshoes or someone to understand the concepts you are trying to convey, you never lose your cool.



PASSION
You love to connect people to nature, deepen their understanding of science and natural resources, and help them become better stewards of the public lands.



KNOWLEDGE
You are a skilled outdoors person and you know how to research to learn even more. And you inspire others to want to learn, too.



FLEXIBILITY
You are adaptable! You are prepared to change things up to keep programs safe, engaging, and in tune with the environment around you.



Being a BLM environmental educator can also take education, of course. Find what it takes to be one at <https://www.blm.gov/careers/careers-in-blm>.

BLM ALASKA ENVIRONMENTAL EDUCATION

Our educators work with community and recreation partners to provide opportunities for families to spend time together outdoors. By engaging young people in learning and recreation on public lands, we can nurture the next generation of conservation stewards and leaders.

FY2020 Statewide Engagement

114 engagement programs
126 education programs
20 Every Kid in a Park programs

8,979
total learners engaged

16
Alaska Communities Served



Learn more about our Environmental Education Program at <https://www.blm.gov/learn>