



U.S. Department of the Interior
Bureau of Land Management



U.S. Department of Agriculture
Mendocino National Forest

Berryessa Snow Mountain National Monument

BLM Trails and Travel Management Workshop

January 28, 2021



Rebecca Carr Wong, Monument Manager

BLM & USFS, Service First Agreement



Workshop Presenters

Rebecca Carr Wong

Monument Manager

Berryessa Snow Mountain National Monument

Jane Arteaga

Travel & Transportation Manager

BLM California State Office

Paul Uncapher

Principal/Senior Project Manager

Stantec Consulting Services Inc.



Audio Options

Note: All participant microphones will be muted while the speaker is presenting.

1. To Use Your Computer's Audio:

When the webinar begins, you will be connected to audio using your computer's microphone and speakers (i.e., Voice Over Internet Protocol or VoIP).

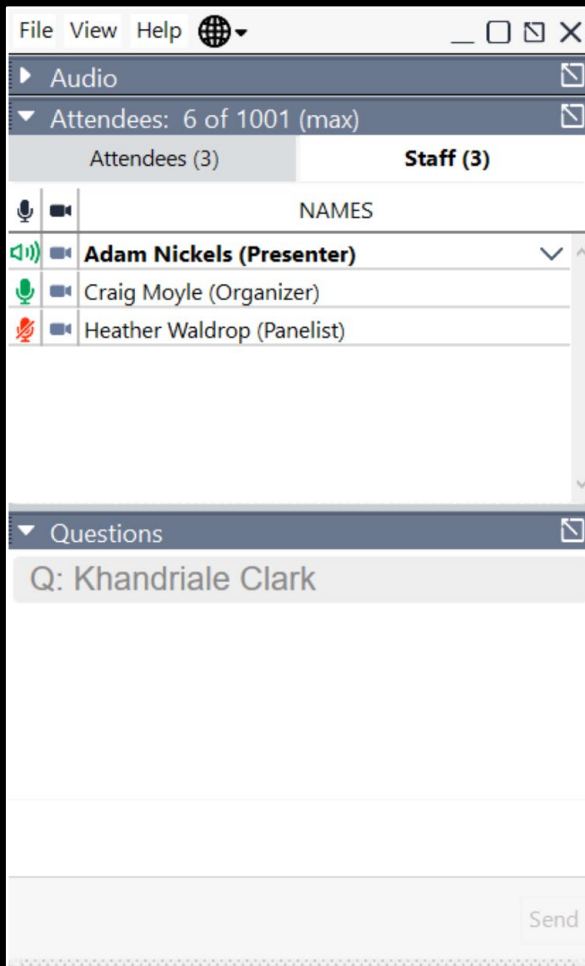
A headset is recommended.

--OR--

2. To Use Your Telephone:

If you prefer to use your phone, you must select "Use Telephone" after joining the webinar and call in using the number provided in the email confirmation received during registration.

How to Ask Questions



- Open the “Questions” tab in the GoToWebinar dashboard
- Type in your request or your question and send to “All”
- We will read and respond to your question in the order received
- You may also email questions here:
khandriale.clark@stantec.com

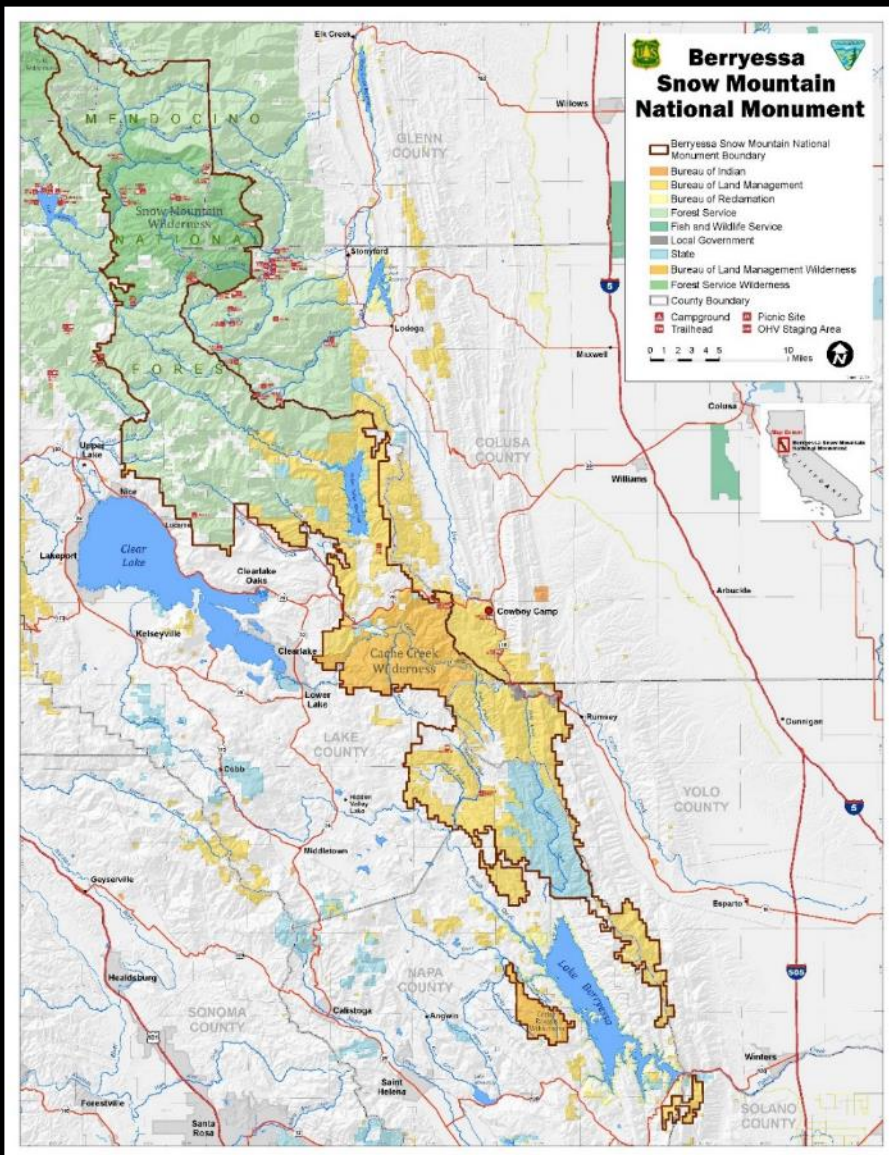


Workshop Objectives

- Define the BLM Berryessa Snow Mountain National Monument Travel Management Area
- Engage stakeholders in a collaborative discussion about travel management planning for the BLM managed lands within the monument
- Inform participants about existing land management plans and BLM route inventory
- Provide an overview of BLM travel management planning process

“The protection of the Berryessa Snow Mountain area will preserve its prehistoric and historic legacy and maintain its diverse array of scientific resources, ensuring that the prehistoric, historic, and scientific values remain for the benefit of all Americans.”

- Presidential Proclamation
July 10, 2015



A landscape photograph of Berryessa Snow Mountain National Monument. The foreground is a grassy hillside with dry, yellowish-brown grass and some green shrubs. In the middle ground, there are rolling hills with patches of green trees and shrubs. The background shows a cloudy sky with dark, grey clouds. The text is overlaid on the image.

Berryessa Snow Mountain National Monument

co-managed by
Bureau of Land Management (BLM)
United States Forest Service (USFS)

Interagency Monument Management Team

BLM Central California District

- Ukiah Field Office

USFS Mendocino National Forest

- Upper Lake District Office
- Grindstone District Office

Wilderness Areas:

Snow Mountain

Cache Creek

Cedar Roughs



Resource Conservation





2018-2020 Wildfire Activity

- LNU Lightning Complex (Hennessey, Wallbridge and Meyers Fires)
- August Complex (Doe, Hopkins, Elkhorn, etc.)
- Mendocino Complex (Ranch and River Fires)
- Pawnee Fire
- County Fire
- Snell Fire
- Cache Fire



Berryessa Snow Mountain National Monument Community Conversations Report



Willows Community Conversation



https://www.fs.usda.gov/Internet/FSE_DOCUMENT/S/fseprd550779.pdf

A Cultural Resources Overview of the Berryessa Snow Mountain National Monument

By:
William Hildebrandt
Cindy Baker
Mary Manicry
Susan Heilner
Jerome King

For Western Anthropological Research Group, Inc.
P.O. Box 10000, San Jose, CA 95193

September 2018



Submitted to:
Bureau of Land Management
U.S. Department of the Interior
2000 L Street, NW
Washington, DC 20540

BLM Ukiah Resource Management Plan

<https://eplanning.blm.gov/eplanning-ui/project/79315/570>



Berryessa Snow Mountain National Monument

The Bureau of Land Management Ukiah Field Office
invites you to a

> BLM Trails and Travel Management Workshop

The BLM invites stakeholders and members of the public to the first of two virtual public Travel Management Planning Workshops for the Berryessa Snow Mountain National Monument.

This workshop is designed to engage stakeholders and members of the public on a vision for travel management at the Berryessa Snow Mountain National Monument. The BLM will use public input as part of its travel management planning efforts, which guides the designation of a wide variety of roads and trails for motorized, non-motorized and non-mechanized recreational opportunities within the monument.

This workshop will:

- **Define** the BLM Berryessa Snow Mountain National Monument Travel Management Area
- **Engage** stakeholders in a collaborative discussion about travel management planning for the BLM managed lands within the monument
- **Inform** participants about existing land management plans and BLM route inventory
- **Provide** an overview of BLM travel management planning phases

We believe partnerships and inclusion are vital to managing sustainable public lands for the benefit of current and future generations.

For more information about the Berryessa Snow Mountain National Monument visit www.blm.gov/berryessa-snow-mountain.

For more information about the workshop, contact Rebecca Carr Wong at (707) 468-4023 or rwong@blm.gov

Thursday,
January 28, 2021
5:30 - 8:00 p.m.

If you plan to attend,

Please RSVP at

<https://register.gotowebinar.com/register/1478865541170293776>

Registration prior to the workshop
is required to participate.

<https://www.blm.gov/programs/national-conservation-lands/california/berryessa-snow-mountain-national-monument/news>



United States Department of Agriculture

Berryessa Snow Mountain National Monument



https://www.fs.usda.gov/Internet/FSE_DOCUMENTS/fseprd641442.pdf



Berryessa Snow Mountain National Monument

The Bureau of Land Management and
Mendocino National Forest invite you to

> Recreation, Volunteerism and Stewardship Workshops

Dedicated volunteers play a key role in helping the Bureau of Land Management and U.S. Forest Service, as cooperative federal managers of the Berryessa Snow Mountain National Monument, to maintain and protect the monument's recreational opportunities and natural resources.

The BLM and USFS will be hosting the Recreation, Volunteerism and Stewardship Workshop in two locations in May to bring together past, current and future volunteers.

These workshops will:

- **Engage** stakeholders in a collaborative discussion about recreation, volunteerism and stewardship to support the monument.
- **Share** expertise and lessons learned from previous volunteer efforts and partnerships with the federal land managers.
- **Learn** more about agency processes and requirements for projects that rely on volunteer support.
- **Create successful partnerships** for a thriving monument and network with other volunteer groups.

We welcome partnerships and inclusion are vital to managing sustainable public lands for the benefit of current and future generations.

Attend the workshop and invest in America's public lands!

Saturday, May 12, 2018
9:00 am to 3:00 pm
Skyline Park Social Room
2201 Inova Ave.
Napa, CA 94559

Friday, May 18, 2018
9:00 am to 3:00 pm
Grange Community Center
9355 Government St.
Upper Lake, CA 95485

The workshops will have a similar agenda and format. Discussions may focus on areas of the monument that are closest to the workshop venue.

If you plan on attending, please RSVP by Friday, April 20 to the following link:

<https://www.blm.gov/programs/national-conservation-lands/california/berryessa-snow-mountain-national-monument/news>

For more information about the Berryessa Snow Mountain National Monument visit

<https://www.blm.gov/programs/national-conservation-lands/california/berryessa-snow-mountain-national-monument/news>

For more information about the workshops, contact Ciel Vu at (415) 391-7900 or cvu@blmwest.com



Mendocino National Forest Motor Vehicle Use Maps

<https://www.fs.usda.gov/main/mendocino/maps-pubs>

USDA United States Department of Agriculture
Forest Service

Mendocino National Forest

Forest Service Home About the Agency Contact the National Office Inside the FS

Site Map

- Mendocino National Forest
- Home
- Special Places
- Recreation
- Alerts & Notices
- Passes & Permits
- Maps & Publications**
- Land & Resources Management
- Learning Center
- Working Together
- About the Forest
- News & Events

Contact Information

Mendocino National Forest
825 N. Humboldt Ave.
Willows, CA 95988
(530) 934-3316

Upper Lake Ranger District
(707) 275-2361

Stonyford Work Center
(530) 963-3128

Red Bluff Recreation Area
(530) 934-3316

Covelo Ranger District
(707) 983-6118

Stay Connected

Blog Facebook Twitter YouTube

Contact Us

Maps & Publications

The US Forest Service provides several types of publications and maps to the public. The material is available in many forms: brochures, maps, Recreational Opportunity Guides (ROGs), on such subjects as recreation, sightseeing, wilderness, travel management, and vegetation.

Forest Maps

The Forest Service publishes a variety of map products to help you plan your next adventure or enjoy your next visit!

For example:

- You can purchase National Forest Visitor Maps through the U.S. Geological Survey Store
- Several types of mobile compatible maps are available from Avenza Maps
- US Geological Survey website offers USGS Topographic Maps and a wide variety of maps on-line and for purchase.

In general, forest visitor and other kinds of maps may also be purchased at most **Mendocino National Forest Offices**.

Motor Vehicle Use Maps (MVUM)

The **Motor Vehicle Use Map** displays National Forest System routes (roads and trails) or areas designated open to motorized travel. The Motor Vehicle Use Map also displays uses allowed by vehicle class (highway-legal vehicles, vehicles less than 50 inches wide and motorcycles), and seasonal allowances.

- Access our MVUMs

Off-Highway Vehicle Maps (OHV)

- Stonyford OHV Area Map
- Upper Lake OHV North Map
- Upper Lake OHV South Map

Forest Service Publications

- Research & Development
- Treesearch
- Southern Research Station
- Pacific Southwest Research Station
- National FS Publications

OHV Maps

- Stonyford OHV Area Map
- Upper Lake OHV North Map
- Upper Lake OHV South Map

Highlights

- Maps for mobile devices

After downloading and using the app, let us know what you think at SM.FS.R5DigMaps@usda.gov.

Mendocino National Forest Location Map



U.S. DEPARTMENT OF THE INTERIOR
BUREAU OF LAND MANAGEMENT

Site Search



HOME VISIT ABOUT LEARN SERVICES GET INVOLVED PROGRAMS STATES **CORONAVIRUS UPDATES**

Home > California State Office > Central California District Office > Ukiah Field Office

CENTRAL CALIFORNIA DISTRICT OFFICE

BAKERSFIELD FIELD OFFICE
BISHOP FIELD OFFICE
CENTRAL COAST FIELD OFFICE
MOTHER LODE FIELD OFFICE
UKIAH FIELD OFFICE

FIRE CLOSURES AND FIRE RESTRICTIONS

Click here for important information regarding fire closures, fire restrictions and target shooting restrictions for BLM California.

COVID-19 UPDATES

Click here for up-to-date information on changes to closures, facilities and services in California in response to coronavirus (COVID-19)



UKIAH FIELD OFFICE

The Ukiah Field Office boundary includes approximately 270,000 acres of BLM-managed surface acres and 214,000 additional subsurface acres (mineral estate) in northern California.

The geographic area includes all BLM-managed public lands within the counties of Colusa, Glenn, Lake, Napa, Marin, Mendocino (south of the City of Willits), Solano, Sonoma and Yolo. Approximately 1.5 million people live within this region.

Click here to explore an interactive map of the Ukiah Field Office.
Field Office Boundaries are marked in blue and different data layers are available in the top right 'Layer List'. Some characteristics will become visible as the map is zoomed in.

CONTACT

Mailing Address:
2550 North State Street, Suite 2
Ukiah, CA 95482
Email: BLM_CA_Web_UK@blm.gov
Phone: 707-468-4000
Fax: 707-468-4027
TTY/Federal Relay System: 1-800-877-8339

Hours:
8:30 am-4:30 pm M-F virtual only - via email or phone. The office is temporarily closed to in-person visits.



BERRYESSA SNOW MOUNTAIN NATIONAL MONUMENT



BLM & U.S. Forest Service Recreational Opportunities within 10 miles of Berryessa Snow Mountain National Monument

DEER VALLEY, PENNY PINES & MIDDLE CREEK



LETT'S LAKE & STONEY CREEK



SNOW MOUNTAIN WILDERNESS



INDIAN VALLEY MANAGEMENT AREA



Sites within [Indian Valley Management Area](#) are managed by the Bureau of Land Management Ukiah Field Office.

Name	Facilities
Blue Oaks Campground	Camping
Kowalski Camp	Camping (boat/foot access)
Wintun Camp	Camping
Indian Creek Bridge	Trail (foot/equestrian access)

CACHE CREEK NATURAL AREA & CACHE CREEK WILDERNESS	+
KNOXVILLE MANAGEMENT AREA	+
BERRYESSA PEAK & STEBBINS COLD CANYON	+
CEDAR ROUGHS WILDERNESS	+

BERRYESSA SNOW MOUNTAIN NATIONAL MONUMENT, U.S. FOREST SERVICE »
MONUMENT NEWS »
UKIAH FIELD OFFICE »

PLANNING

BLM ePLANNING »
MENDOCINO NATIONAL FOREST MONUMENT PLANNING »
U.S. FOREST SERVICE SCHEDULE OF PROPOSED ACTIONS (SOPA) »

PLAN YOUR VISIT

NATIONAL MONUMENT MAP »
INTERACTIVE BLM RECREATION MAP »
INTERACTIVE U.S. FOREST SERVICE MAP »
MENDOCINO NATIONAL FOREST MAPS »

PARTNERS

MENDOCINO NATIONAL FOREST »
TULEYOME »
CONSERVATION LANDS FOUNDATION »
CACHE CREEK WILDLIFE AREA »
KNOXVILLE WILDLIFE AREA »
BUREAU OF RECLAMATION »
UC DAVIS NATURAL RESERVES »
PUTAH CREEK WILDLIFE AREA »
LAKE COUNTY »
YOLO COUNTY PARKS »

GET INVOLVED

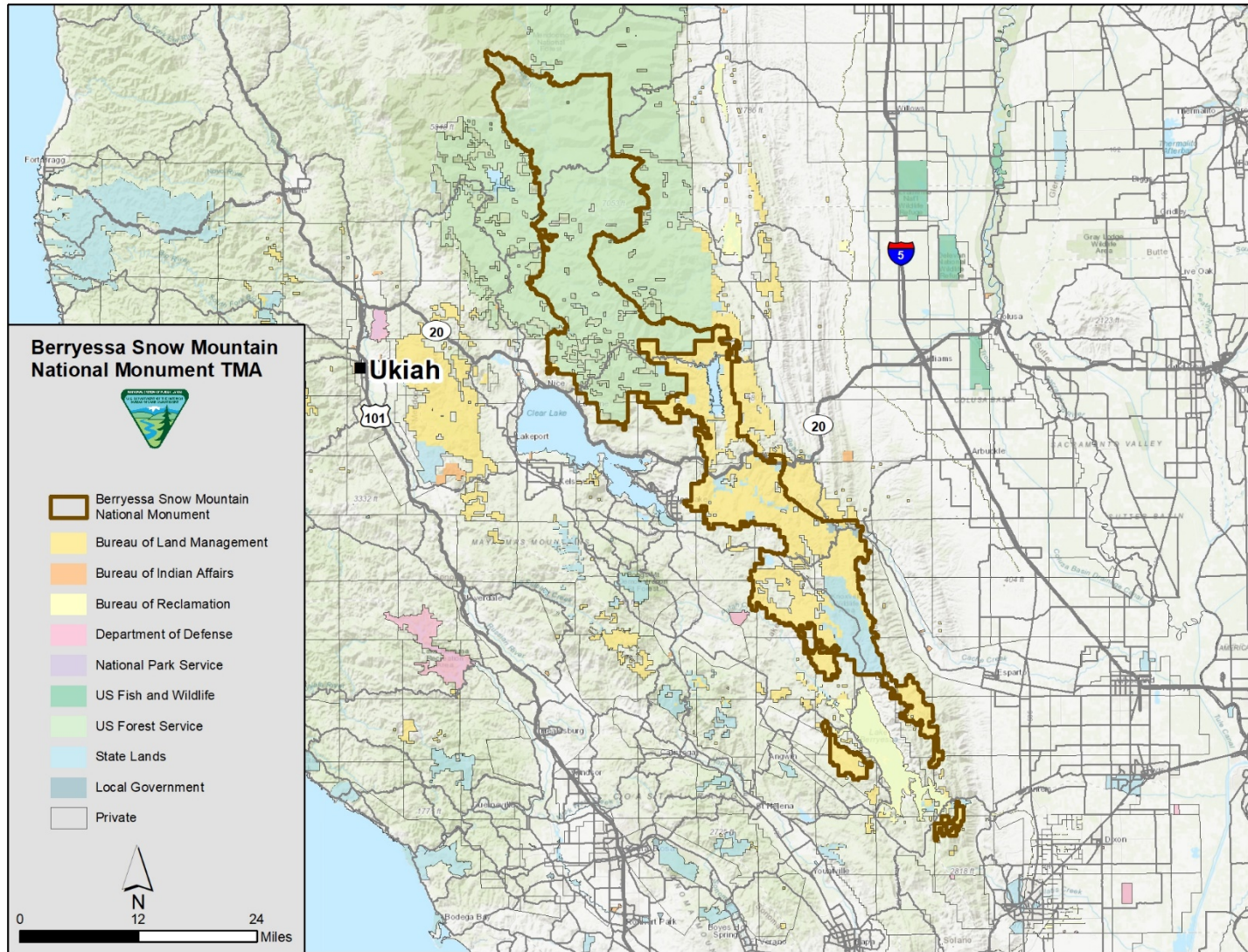
PROPOSE A NEW PROJECT OR EVENT AT THE MONUMENT. »

FlickR Album



<https://www.blm.gov/programs/national-conservation-lands/california/berryessa-snow-mountain-national-monument>

Travel Management Area





Opportunities for Public Engagement

- Public Workshops to engage stakeholders in route designation discussions
- Public Scoping for a Travel Management Plan for BLM-managed lands within the monument (Summer 2021)
- Public Comment for the plan (Winter 2021)

Native American Tribes will be offered additional opportunities to provide information through Government-to-Government consultations.

Additional consultations with state and federal agencies will be conducted in compliance with legislative and policy requirements.



Route Designation

- Route designations are categorized by three basic descriptors: Motorized, Non-Motorized, or Non-Mechanized
- Route designations are further categorized by three additional sub-descriptors: Open, Limited, or Closed



Designation Definitions

- Motorized: Moving by means of a vehicle powered by a motor
- Non-Motorized: Moving by foot; stock or pack animal; non-motorized boat, ski, or mechanized vehicle such as a bicycle
- Non-Mechanized: Moving by foot, or by stock or pack animal



Designation Definitions

- Open: Route open for use by the public
- Limited: Route open to the public with limitations (e.g., seasonal, vehicle type or width)
- Closed: Closed to public use



Questions?



BLM Travel Management

- Federal Regulations in 43 CFR 8342.1 require BLM to establish travel designations for specific travel management areas
- For each travel management area, BLM uses a three-step process to ultimately designate any given route
 - Step 1: Route Inventory
 - Step 2: Route Assessment ← **We Are Here**
 - Step 3: Environmental Analysis



Travel Management Planning

Step 1: Route Inventory

- BLM initiated a route inventory in the monument's travel management area in 2018 and completed it in 2019
- Route inventory included both desktop- and field-based mapping efforts throughout the travel management area
- Field effort occurred only on BLM lands where legal access was available
- BLM interdisciplinary team conducted comprehensive review of all routes identified



Travel Management Planning

Step 2: Route Assessment

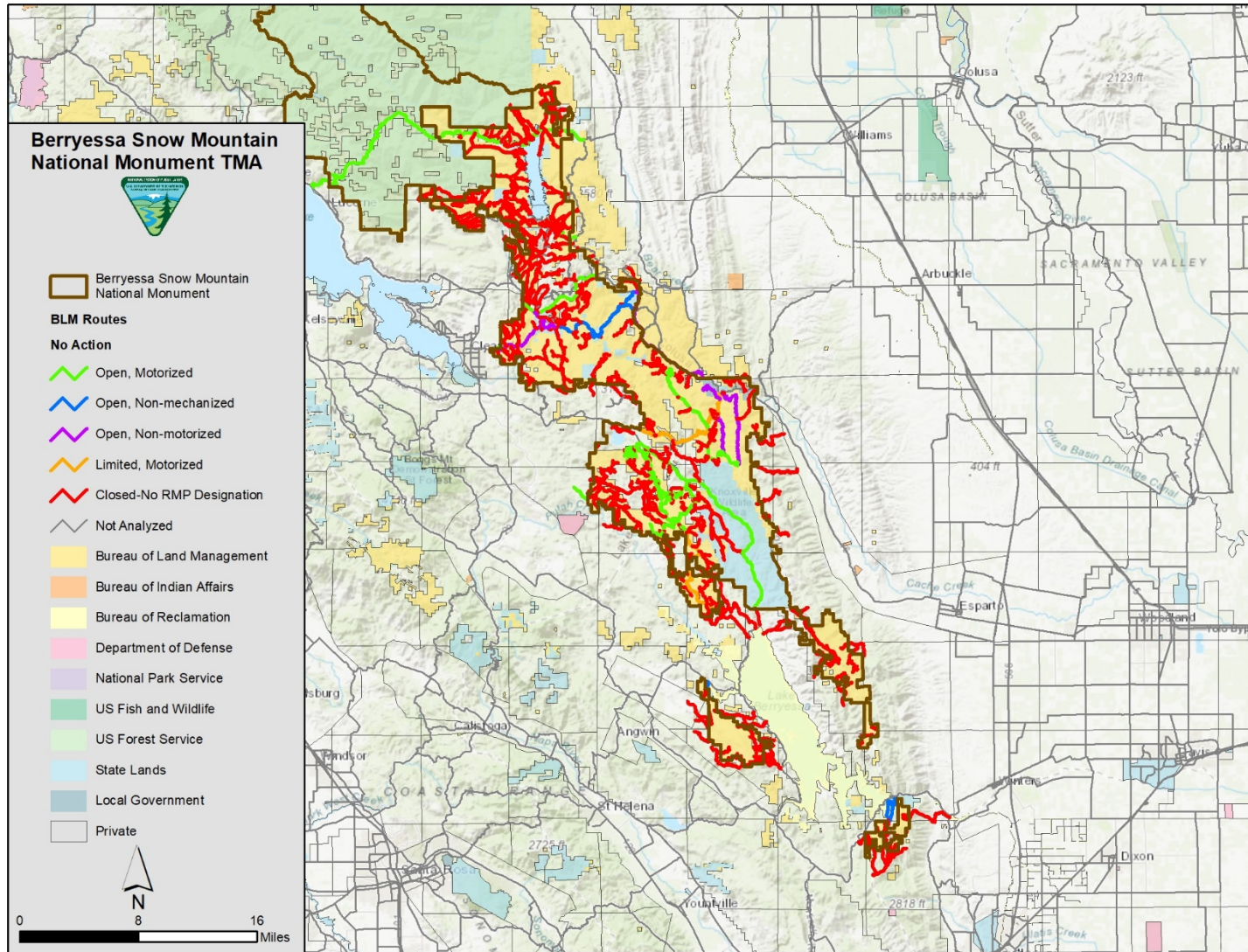
- Hold workshops to gain stakeholder and public information and involvement
 - Gather information from stakeholder groups
 - Identify areas public would like better access to
 - Identify popular routes that have not yet been designated through BLM Travel Management process
- Apply designations consistent with Ukiah Field Office Resource Management Plan (RMP) for each route



Step 2: Route Assessment Considerations

- Current public uses
- Desired public uses
- Natural resources
- Cultural resources
- Traditional practices
- Diverse recreational opportunities
- National Monument considerations

Routes Designated in the BLM Ukiah Field Office Resource Management Plan (RMP)





Indian Valley Management Area

Allowable Uses	Middlecountry	Frontcountry
Non-motorized/Non-mechanized	Y	Y
Mechanized	Y	Y
Motorized	Y	Y

Key:

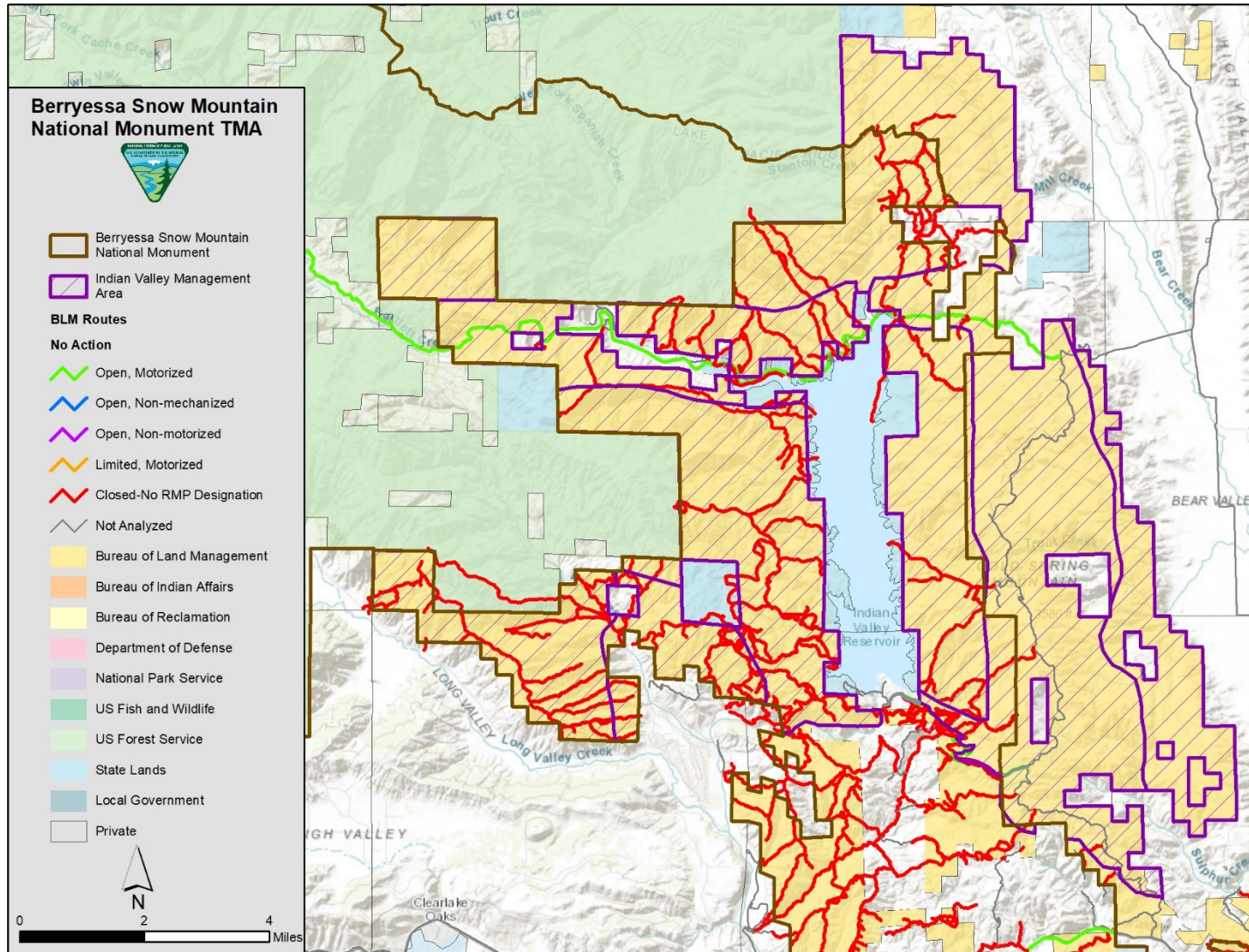
Y = Yes; motorized use is allowed only on designated routes

N = No

L = Limited; off-highway vehicle (OHV) use limited by season

- 22 miles of route designated for motorized use

Indian Valley Management Area



Cache Creek Natural Area

Allowable Uses	Backcountry	Middlecountry	Frontcountry
Non-motorized/Non-mechanized	Y	Y	Y
Mechanized	Y	Y	Y
Motorized	N	N	L

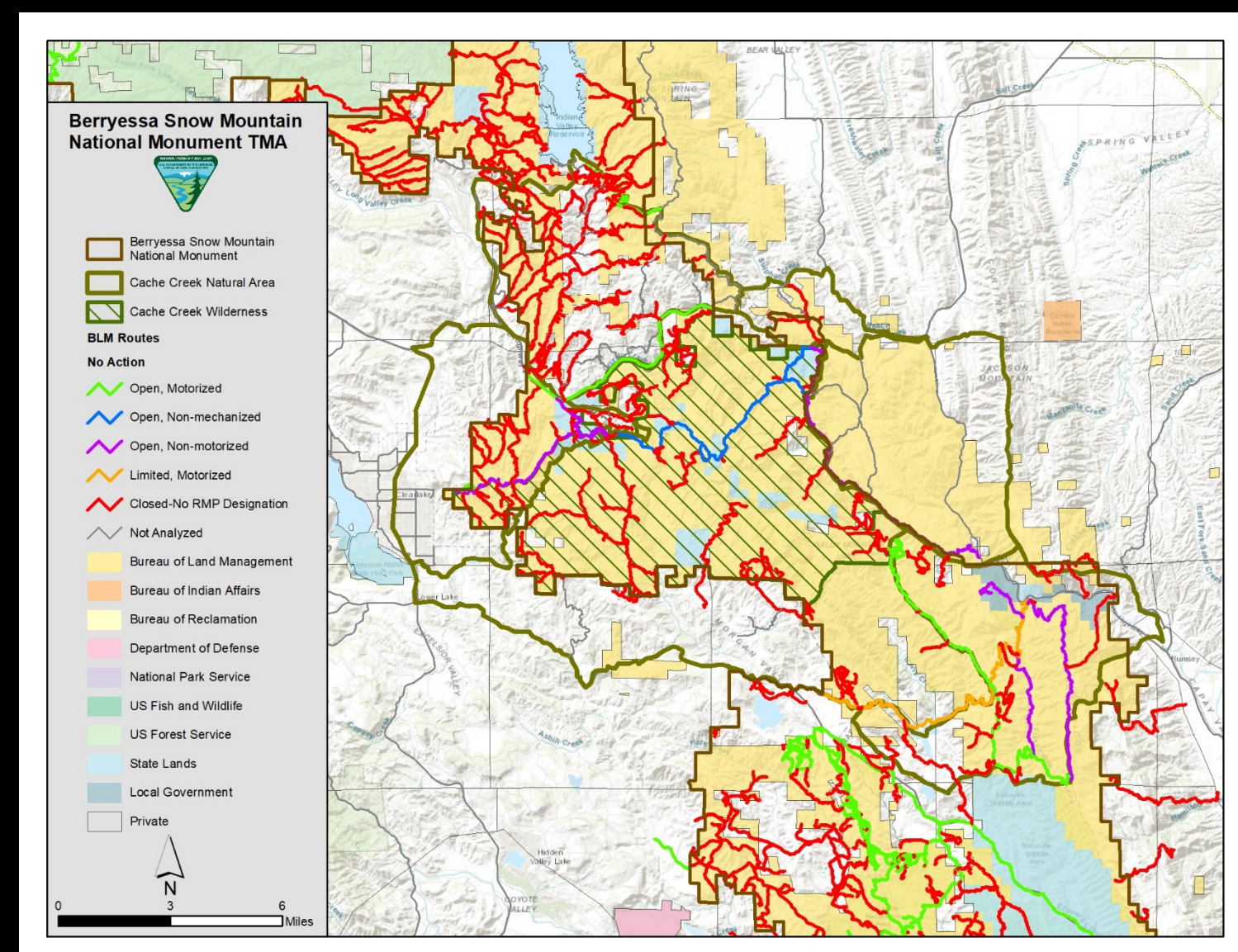
Key:

Y = Yes; motorized use is allowed only on designated routes

N = No

L = Limited; off-highway vehicle (OHV) use limited by season

- 11.24 miles of route designated for motorized use plus county roads and highways
- 69.25 miles designated for non-motorized use
- 50 miles available for additional designations



Cedar Roughs Wilderness

Allowable Uses	Primitive	Backcountry	Frontcountry
Non-motorized/Non-mechanized	Y	Y	Y
Mechanized	N	N	Y
Motorized	N	N	Y

Key:

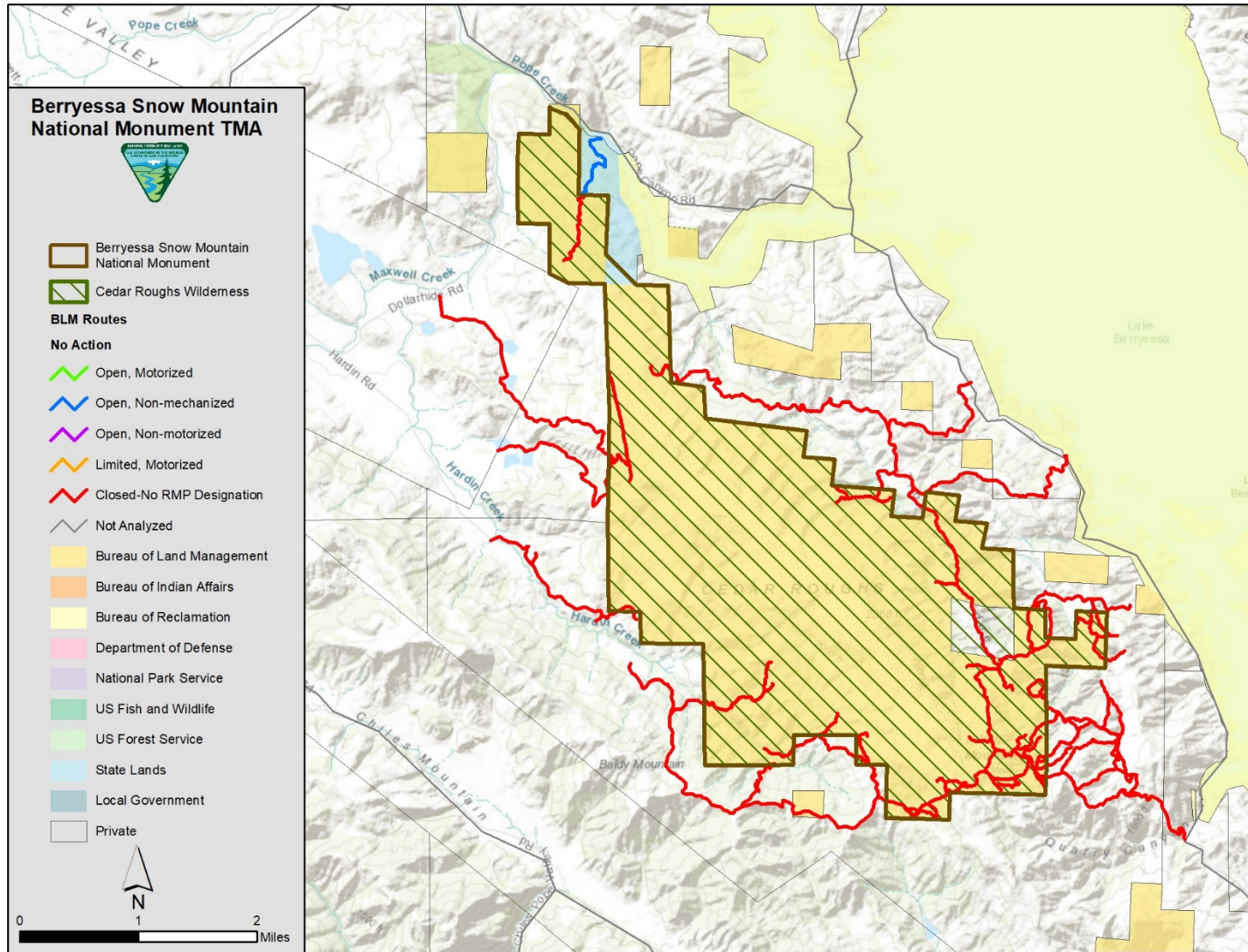
Y = Yes; motorized use is allowed only on designated routes

N = No

L = Limited; off-highway vehicle (OHV) use limited by season

- Trailheads may be developed to provide non-motorized access

Cedar Roughs Wilderness



Knoxville Management Area

Allowable Uses	Middlecountry	Frontcountry
Non-motorized/Non-mechanized	Y	Y
Mechanized	Y	Y
Motorized	Y	Y

Key:

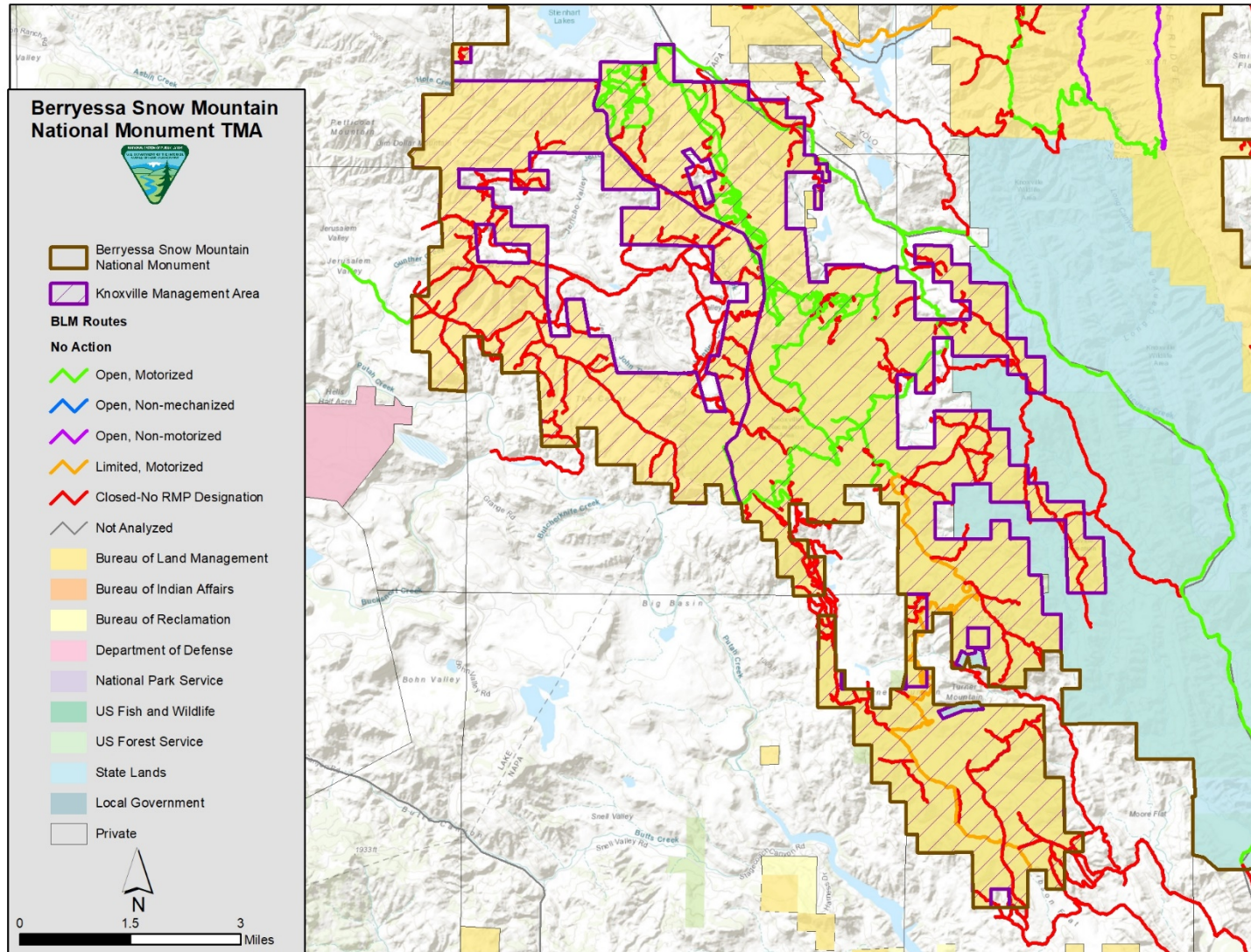
Y = Yes; motorized use is allowed only on designated routes

N = No

L = Limited; off-highway vehicle (OHV) use limited by season

- 51.46 miles of route designated for motorized use
- 11.34 miles designated for non-motorized use
- 30 miles available for additional designations outside of the Area of Critical Environmental Concern (ACEC)

Knoxville Management Area





Berryessa Peak Management Area

Allowable Uses	Backcountry	Frontcountry
Non-motorized/Non-mechanized	Y	Y
Mechanized	Y	Y
Motorized	N	Y

Key:

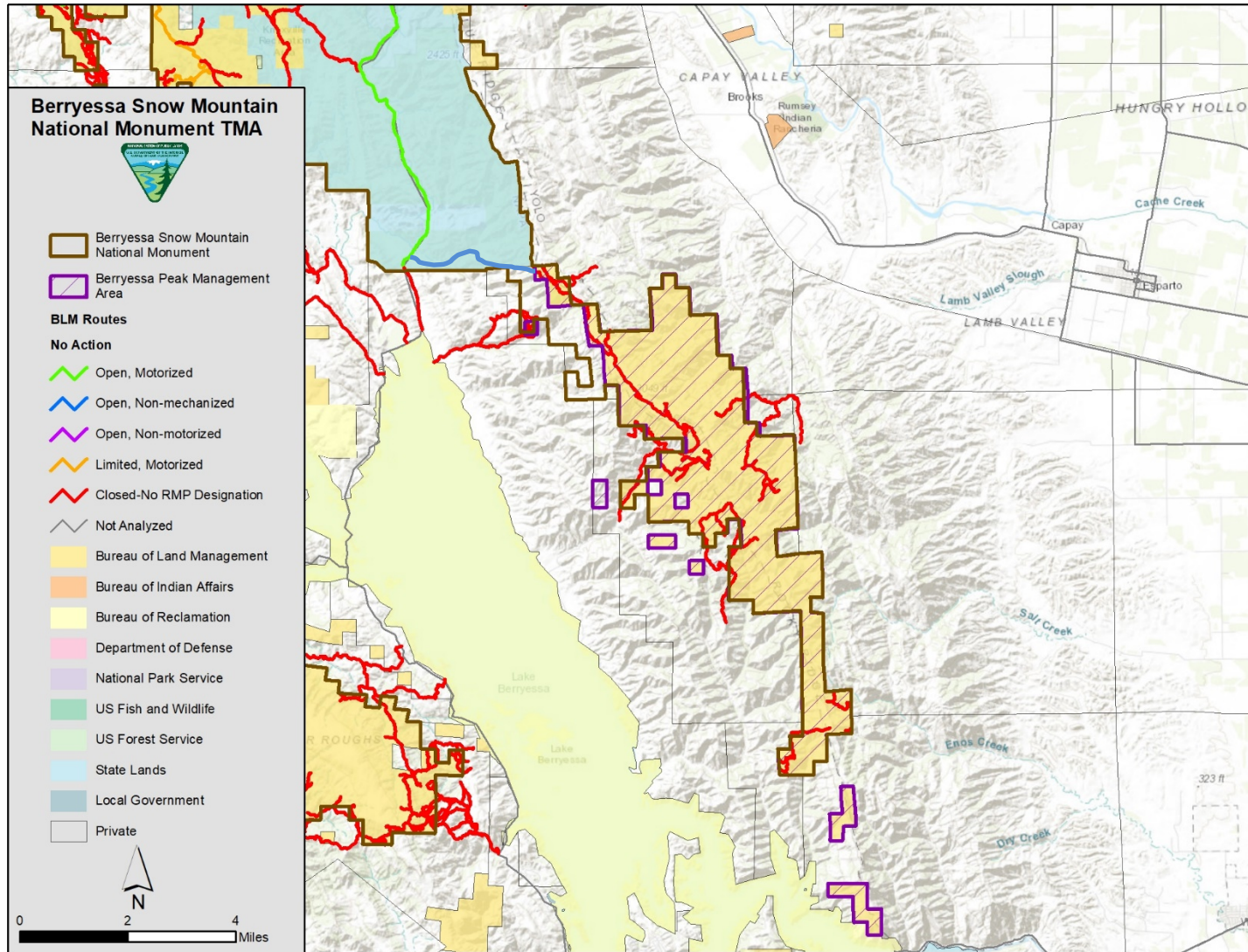
Y = Yes; motorized use is allowed only on designated routes

N = No

L = Limited; off-highway vehicle (OHV) use limited by season

- Reroutes as necessary to protect resources in Berryessa Peak Management Area

Berryessa Peak Management Area





Stebbins Cold Canyon Management Area

Allowable Uses	Middlecountry	Frontcountry
Non-motorized/Non-mechanized	Y	Y
Mechanized	Y	Y
Motorized	L	L

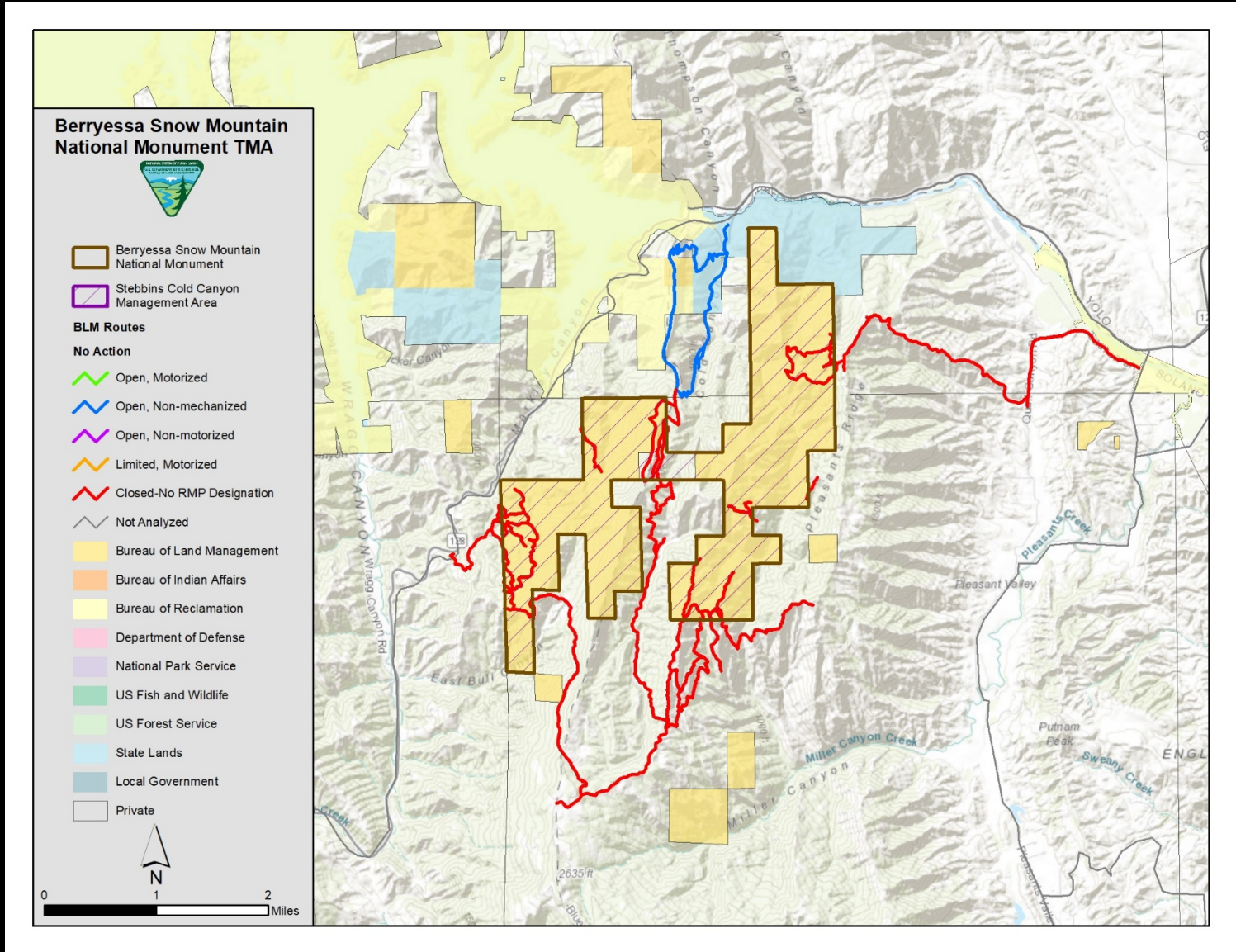
Key:

Y = Yes; motorized use is allowed only on designated routes

N = No

L = Limited; off-highway vehicle (OHV) use limited by season

- 25 miles of route available for additional designations in Scattered Tracts





Interactive Questionnaire

- Optional, online interactive questionnaire tool that allows real-time capture of information via a series of specific questions
- Access via web link below
- <https://survey123.arcgis.com/share/3738cc019da14fa1a0f3a5631769c279>
- Instructions on how to use the interactive questionnaire are presented throughout the tool's online interface

Berryessa Snow Mountain National Monument

Travel Management Area Interactive Questionnaire

Select your preferred language

Seleccione su idioma preferido

☐ English (Inglés)

☐ Spanish (Español)

The Ukiah BLM District office is attempting to better understand travel patterns within the Berryessa Snow Mountain National Monument. Please help us by answering the following questions, based on your experience prior to the COVID-19 pandemic. Please note we ask generalized locational information to help us interpret responses geographically.

1. Please provide your email address if you would like to be on our mailing list. (optional).

This list will be utilized for periodic updates which can include project information, document releases and future public meetings.

2. Do you travel on BLM lands within the national monument?*

This question is required.

☐ Yes

☐ No

2. Do you travel on BLM lands within the national monument?*

This question is required.

☐ Yes

☐ No

Recreational Questions

3. What recreational activities do you participate in on BLM lands within the national monument? (select all that apply)

☐ Off-Highway Vehicles

☐ Scenic Driving

☐ Hiking

☐ Camping

☐ Backpacking

☐ Equestrian

☐ Fishing

☐ River Running (rafting, kayaking, canoeing)

☐ Hunting

☐ Target Shooting

☐ Geocaching

☐ Photography

☐ Guided Tours or Programs

☐ Wildlife Viewing

4. What is the primary type of motorized or mechanized vehicle you use to travel on BLM lands within the national monument? (select one)

☐ 2WD Vehicle

4. What is the primary type of motorized or mechanized vehicle you use to travel on BLM lands within the national monument? (select one)

☐ 2WD Vehicle

☐ 4WD Vehicle

☐ ATV/UTV

☐ Motorcycle

☐ Bicycle

☐ eBike

5. Are there places you like to go but vehicle access is not available due to gates, fencing, signage or other restrictions?

☐ Yes

☐ No

6. Are you aware of routes that appear to have an inaccurate designation and may need their status changed (e.g., closed, open to motorized, open to mechanized)?

☐ Yes

6. Are you aware of routes that appear to have an inaccurate designation and may need their status changed (e.g., closed, open to motorized, open to mechanized)?

☐ Yes

☐ No

7. Are there routes that are currently open that you believe should be closed or restricted to protect sensitive resources?

☐ Yes

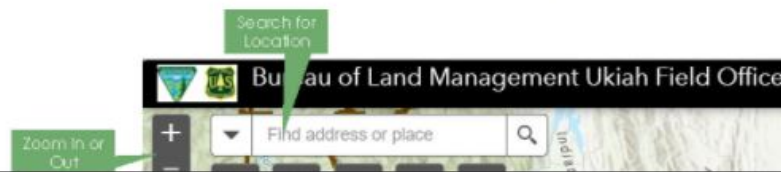
☐ No

For questions 2-7 above we would like to know the places you visit for recreation, areas you would like to go but are restricted, and routes that appear to have an inaccurate designation.

Click the web link below to open an interactive web map in a new browser tab and add your points of interest.

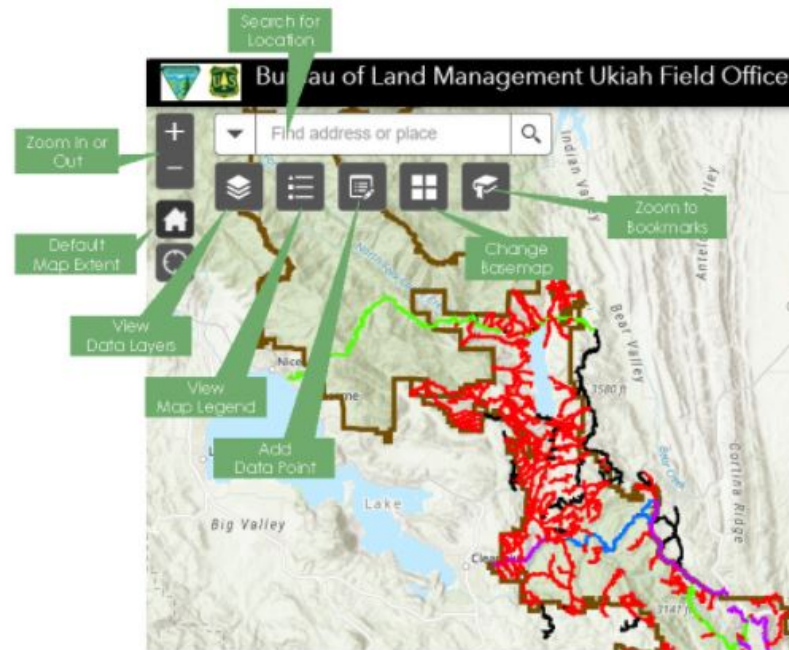
[BSMNM Travel Management Area Interactive Web Map](#)

Overview of using the interactive web map:

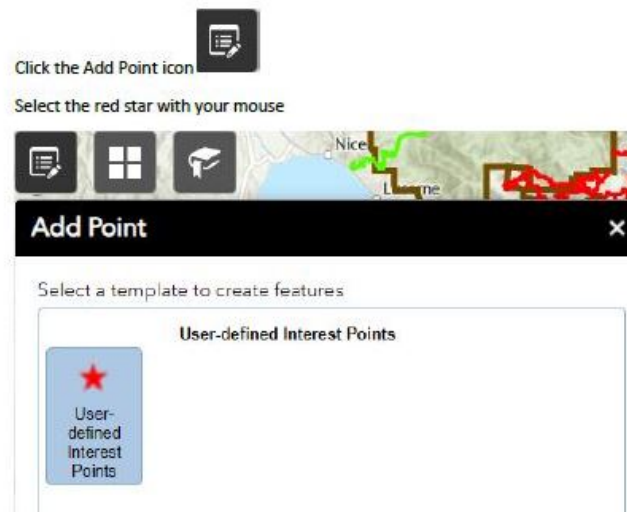


**Access
Interactive
Web Map
Here**

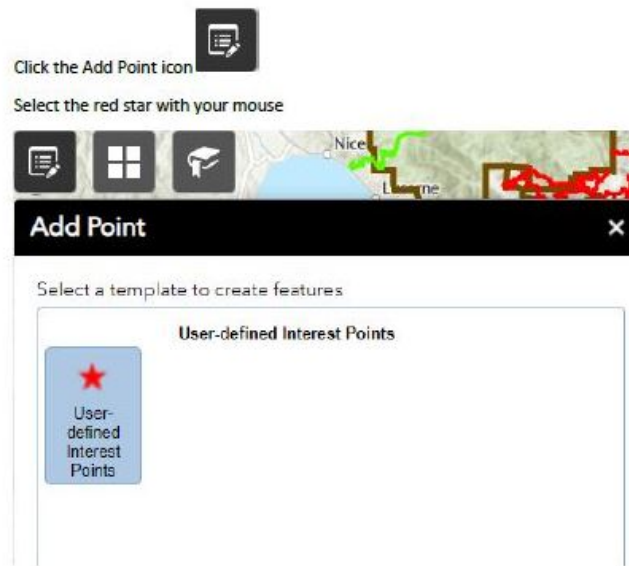
Overview of using the interactive web map:



Instructions on how to add a point:



Instructions on how to add a point:



Click in the map to add a point at your area of interest

Add a Comment

Click Close



8. What interests you most about this travel management planning process?



Select a template to create features

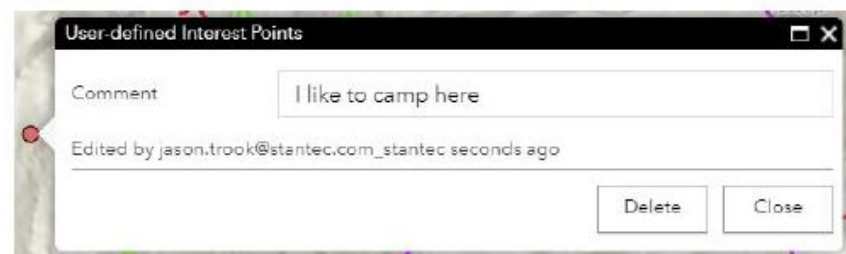
User-defined Interest Points



Click in the map to add a point at your area of interest

Add a Comment

Click Close



8. What interests you most about this travel management planning process?

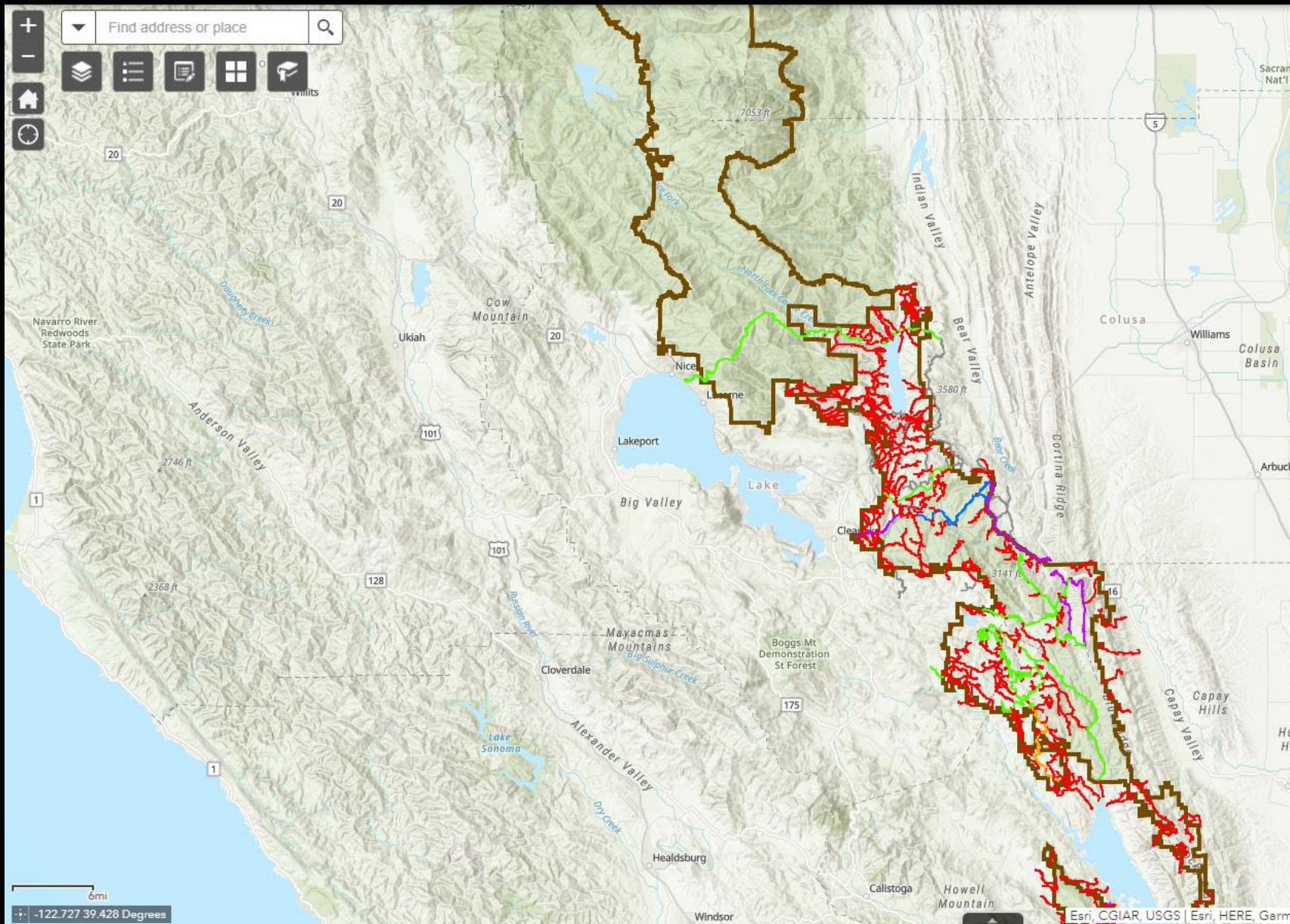
255

Submit



Interactive Web Map

- Optional, online interactive web map tool that allows real-time visualization of data and information, as well as the capture of user-defined interest points
- Access via web link below or by web link embedded within the interactive questionnaire (see prior slide)
- <https://stantec.maps.arcgis.com/apps/webappviewer/index.html?id=6469a0f54aac4c6388aacaffbbc8da1d>
- Instructions on how to use the interactive web map are presented in the interactive questionnaire's online interface





Questions?

&

Live Demo (Web Map)



U.S. Department of the Interior
Bureau of Land Management



U.S. Forest Service
Mendocino National Forest



For more information please contact:
National Monument Manager Rebecca Carr Wong
blm_ca_bsm_nm@blm.gov

Web Map information sharing tool:
<https://stantec.maps.arcgis.com/apps/webappviewer/index.html?id=6469a0f54aac4c6388aacaffbbc8da1d>

Interactive Questionnaire tool:
<https://survey123.arcgis.com/share/3738cc019da14fa1a0f3a5631769c279>