



NATIONAL  
CONSERVATION  
LANDS



# Berryessa Snow Mountain National Monument

The Bureau of Land Management Ukiah Field Office  
invites you to a

## > BLM Trails and Travel Management Workshop

The BLM invites stakeholders and members of the public to the first of two virtual public Travel Management Planning Workshops for the Berryessa Snow Mountain National Monument.

This workshop is designed to engage stakeholders and members of the public on a vision for travel management at the Berryessa Snow Mountain National Monument. The BLM will use public input as part of its travel management planning efforts, which guides the designation of a wide variety of roads and trails for motorized, non-motorized and non-mechanized recreational opportunities within the monument.

This workshop will:

- **Define** the BLM Berryessa Snow Mountain National Monument Travel Management Area
- **Engage** stakeholders in a collaborative discussion about travel management planning for the BLM managed lands within the monument
- **Inform** participants about existing land management plans and BLM route inventory
- **Provide** an overview of BLM travel management planning phases

We believe partnerships and inclusion are vital to managing sustainable public lands for the benefit of current and future generations.

Thursday,  
January 28, 2021  
5:30 - 8:00 p.m.

If you plan to attend,

**Please RSVP at**

[https://register.gotowebinar.com/  
register/1478865541170293776](https://register.gotowebinar.com/register/1478865541170293776)

Registration prior to the workshop  
is required to participate.

For more information about the **Berryessa Snow Mountain National Monument**  
visit [www.blm.gov/berryessa-snow-mountain](http://www.blm.gov/berryessa-snow-mountain).

For more information about the workshop, contact Rebecca Carr Wong at (707) 468-4023 or [rwong@blm.gov](mailto:rwong@blm.gov)



# Berryessa Snow Mountain National Monument

## What is the Berryessa Snow Mountain National Monument?

The Berryessa Snow Mountain National Monument is comprised of 330,780 acres of federally managed public land that was designated a national monument by Presidential Proclamation on July 10, 2015.

The monument extends from nearly sea level to 7,000 feet in elevation, connecting BLM-managed lands at the southern boundary with U.S. Forest Service-managed lands at the northern boundary. The monument includes Berryessa Peak and Snow Mountain, encompassing stunning views, diverse habitats and three wilderness areas. The Berryessa Snow Mountain National Monument offers a wealth of natural, historical and cultural resources, as well as exciting opportunities for people to enjoy the outdoors.

## What is the purpose of this workshop?

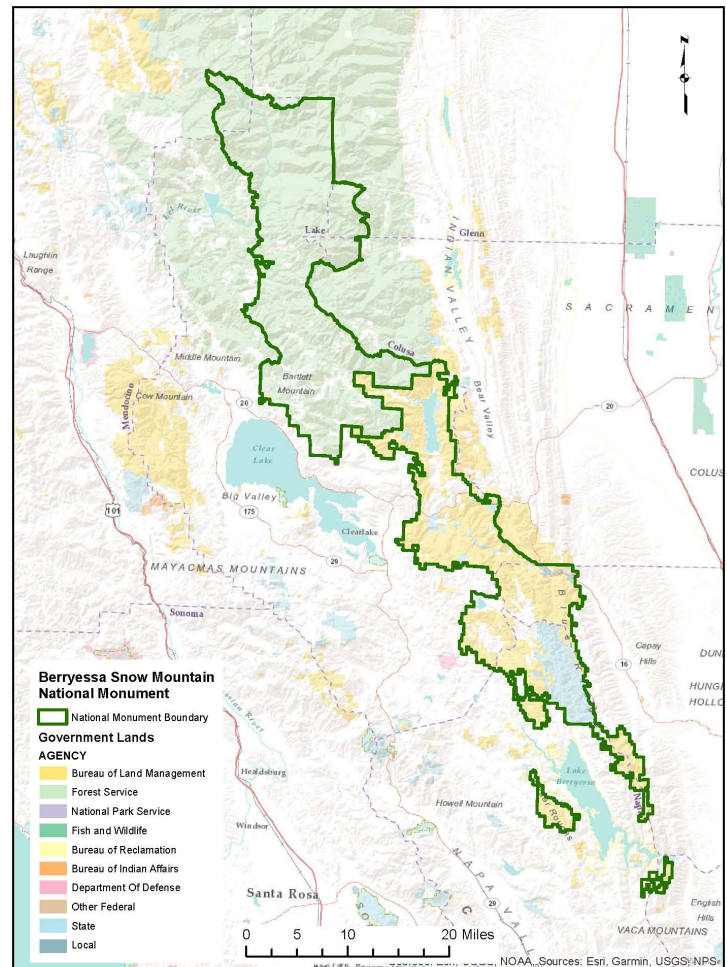
This workshop will focus on travel management planning on BLM-managed lands within the monument and provide an overview of the BLM travel management planning process.

The workshop will define the BLM's Berryessa Snow Mountain National Monument Travel Management Area and describe the BLM's route inventories to date. Existing travel route designations in the 2006 Ukiah Field Office Resource Management Plan will be shared. Input on these existing designations and common uses will be requested.

## Why should I attend?

The BLM recognizes that stakeholders play an important role in the stewardship and maintenance of this monument's recreational values and natural resources.

The workshop will be interactive and focus on sharing information about the BLM's existing trail designations, recreational uses, and considerations for the BLM travel management area of this national monument.



## What if I can't attend the workshop?

If you are not able to attend, we encourage you to designate another person who can attend on your behalf. This is the first of two workshops and it will include an online map/survey tool that will be available online for approximately three weeks after the workshop. The BLM values the input and interest of stakeholders and the public in the management of national monuments.

**The BLM welcomes your input.**