

DEPARTMENT OF THE INTERIOR

Bureau of Land Management

**Notice of Emergency Closure of Public Lands in Lassen County**

AGENCY: Bureau of Land Management, Eagle Lake Field Office

ACTION: Notice of Emergency Closure of Public Lands

SUMMARY: Notice is hereby given that public lands managed by the Bureau of Land Management (BLM) associated with emergency fire suppression actions for the Laura 2 Fire in Lassen County, CA are closed to public access to prevent and reduce risk to public health and safety. Exempted from this closure are personnel and vehicles involved with fire suppression and resource protection, and state, local and federal officials involved with enforcement.

EFFECTIVE DATE: The closure is in effect with the posting of this notice and remains in effect until the authorized officer determines that the fire no longer poses a public safety risk. This closure is effective pursuant to 43CFR Subpart 83464.1(a).

FOR FURTHER INFORMATION CONTACT: Emily Ryan, BLM Agency Administrator, (530) 252-5309.

SUPPLEMENTARY INFORMATION: This closure affects the following public lands and roads managed by the BLM: Ft Sage OHV Area. Lands are located in MDM, Township 26 North, Range 17 East. See map for more detail.

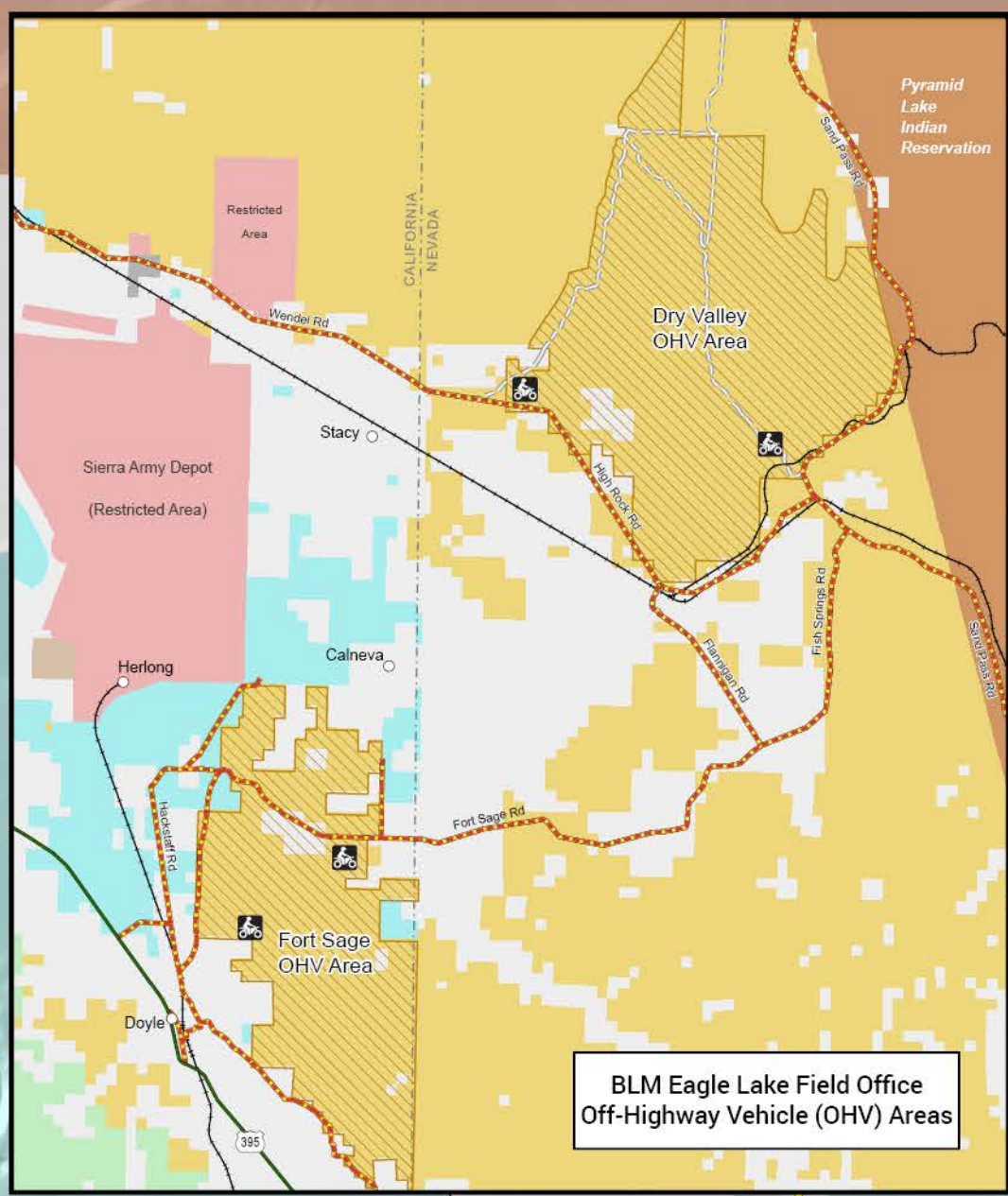
EMILY RYAN Digitally signed by EMILY  
RYAN  
Date: 2020.11.19 14:06:32  
-08'00'

Emily Ryan

Field Office Manager

Eagle Lake Field Office





# FORT SAGE Off-Highway Vehicle Area Bureau of Land Management

## Trail Number and Difficulty Level

- 9 Easiest
- 7 More Difficult
- 41 Most Difficult
- 22 Extremely Difficult

## Routes

- Highway 395
- County Road
- Dirt Road
- UTV Trail
- ATV Trail
- Single Track Trail
- Non-Motorized Trail
- Private Route
- Railroad
- Fence

- P Parking/Staging Area
- Restroom
- Horseback Riding Trail
- Hiking Trail
- Railroad Crossing

## Land Ownership

- Private/Other
- Bureau of Land Management
- Military
- State

