

DEPARTMENT OF THE INTERIOR

Bureau of Land Management

Notice to Rescind Emergency Closure of Public Lands in Lassen County

AGENCY: Bureau of Land Management, Eagle Lake Field Office

ACTION: Notice to Rescind Emergency Closure of Public Lands

SUMMARY: Notice is hereby given that the public land closure on lands managed by the Bureau of Land Management (BLM), associated with emergency fire suppression actions for the Laura 2 Fire in Lassen County, CA has now been lifted.

EFFECTIVE DATE: November 23, 2020

FOR FURTHER INFORMATION CONTACT: Emily Ryan, BLM Agency Administrator, (530) 252-5309.

SUPPLEMENTARY INFORMATION: The following public lands and roads managed by the BLM are re-open for public use and enjoyment: Ft Sage OHV Area. Lands are located in MDM, Township 26 North, Range 17 East. See map for more detail.

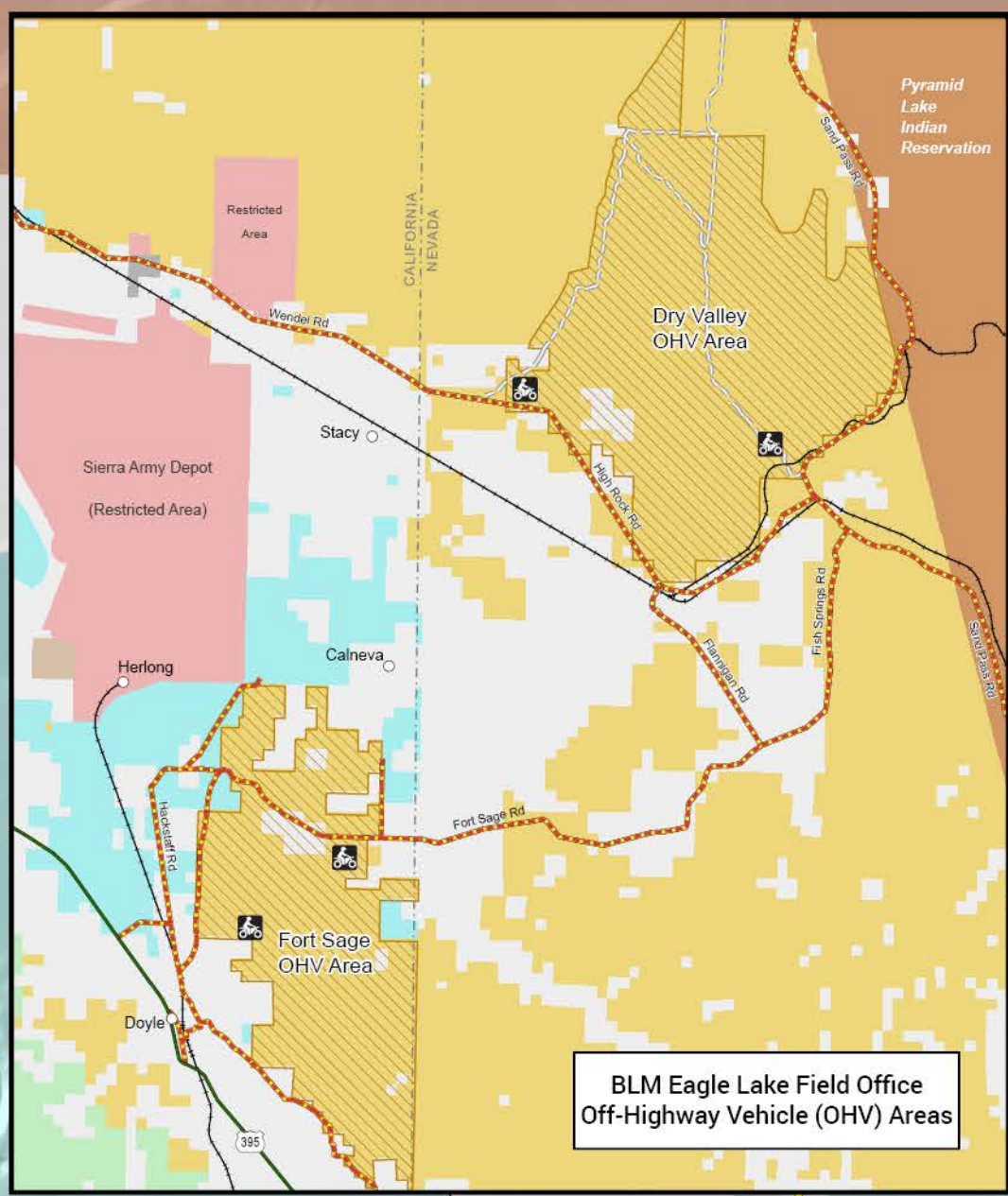
EMILY
RYAN

Digitally signed
by EMILY RYAN
Date: 2020.11.23
13:49:15 -08'00'

Emily Ryan

Field Office Manager

Eagle Lake Field Office



Junction of Trails #11 and #15



Sandy single-track on Trail #6

FORT SAGE Off-Highway Vehicle Area Bureau of Land Management

Trail Number and Difficulty Level

- 9 Easiest
- 7 More Difficult
- 41 Most Difficult
- 22 Extremely Difficult

Routes

- Highway 395
- County Road
- Dirt Road
- UTV Trail
- ATV Trail
- Single Track Trail
- Non-Motorized Trail
- Private Route
- Railroad
- Fence

Land Ownership

- Private/Other
- Bureau of Land Management
- Military
- State

Other Features:

- P Parking/Staging Area
- Restroom
- Horseback Riding Trail
- Hiking Trail
- Railroad Crossing

