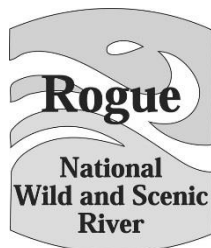


2020 Wild Rogue River Use Report

Grave Creek to Foster Bar

May 15 - October 15



Smullin Visitor Center at Rand River Permits

14335 Galice Road
Merlin, Oregon 97532
Phone: (541) 479-3735
Fax: (541) 479-0535
Email:
BLM_OR_MD_Rogue_River_Mail@blm.gov



U.S. Department of the Interior
Bureau of Land Management
Medford District Office



U.S. Department of Agriculture
U.S. Forest Service
Gold Beach Ranger District

2020 Rogue River Use Summary

Actual Use:

- **12063 people total**, commercial and noncommercial, floated the Wild & Scenic Rogue River in the 2020 regulated use season, May 21 through October 15.
 - 17760 people is the maximum number that could float the wild Rogue in the regulated use season. (120 people per day for the 148-day regulated use season. Regulated use season was shortened by 6 days due to COVID-related shut down.)
- **68% of all possible spaces** were used in 2020
- Use on the Rogue **decreased slightly** during the regulated use season compared to last year. Total use was down by 404 people (- 3%).
- **Commercial use totaled 4432 people**. This is a **decrease** of 1463 people (-25%) compared to 2019.
- **Noncommercial use totaled 7631 people**. This is an **increase** of 1059 people (+16%) compared to 2019.
- Of the 4432 total Commercial spaces used **27 were flex spaces**.

Pre-Season Scheduled Use versus Pool Use:

- **Commercial Use - Calendar versus Pool:** total 4432 people
 - 93% (4119 people) of the spaces came from the commercial calendar
 - 7% (313 people) of the spaces came from the pool
- **Noncommercial Use - Lottery versus Pool:** total 7631 people
 - 33% (2506 people) of the spaces came from the lottery
 - 67% (5125 people) of the spaces came from the pool
- **Cancellations:** total of 11629 spaces cancelled, scheduled and not used
 - Commercial cancellations - 5158 (44%) of the total cancellations.
 - Noncommercial cancellations - 6471 (56%) of the total cancellations.

Maximum Capacity Days:

- 15 days, or 10% of the time, the Rogue was filled to the 120 persons-per-day capacity. (148 days in the season). 2 days in June, 8 days in July, 4 days in August, and 1 day in September reached capacity.
- 9 other days had 1 to 5 openings by the end of the day. 2 of those were in June, 2 in July, and 5 in August.

Non-Commercial Lottery:

- 7982 Applicants
- 804 Successful Applicants were awarded Float Permits
- 9889 Float Spaces were scheduled through the 804 successful lottery applicants

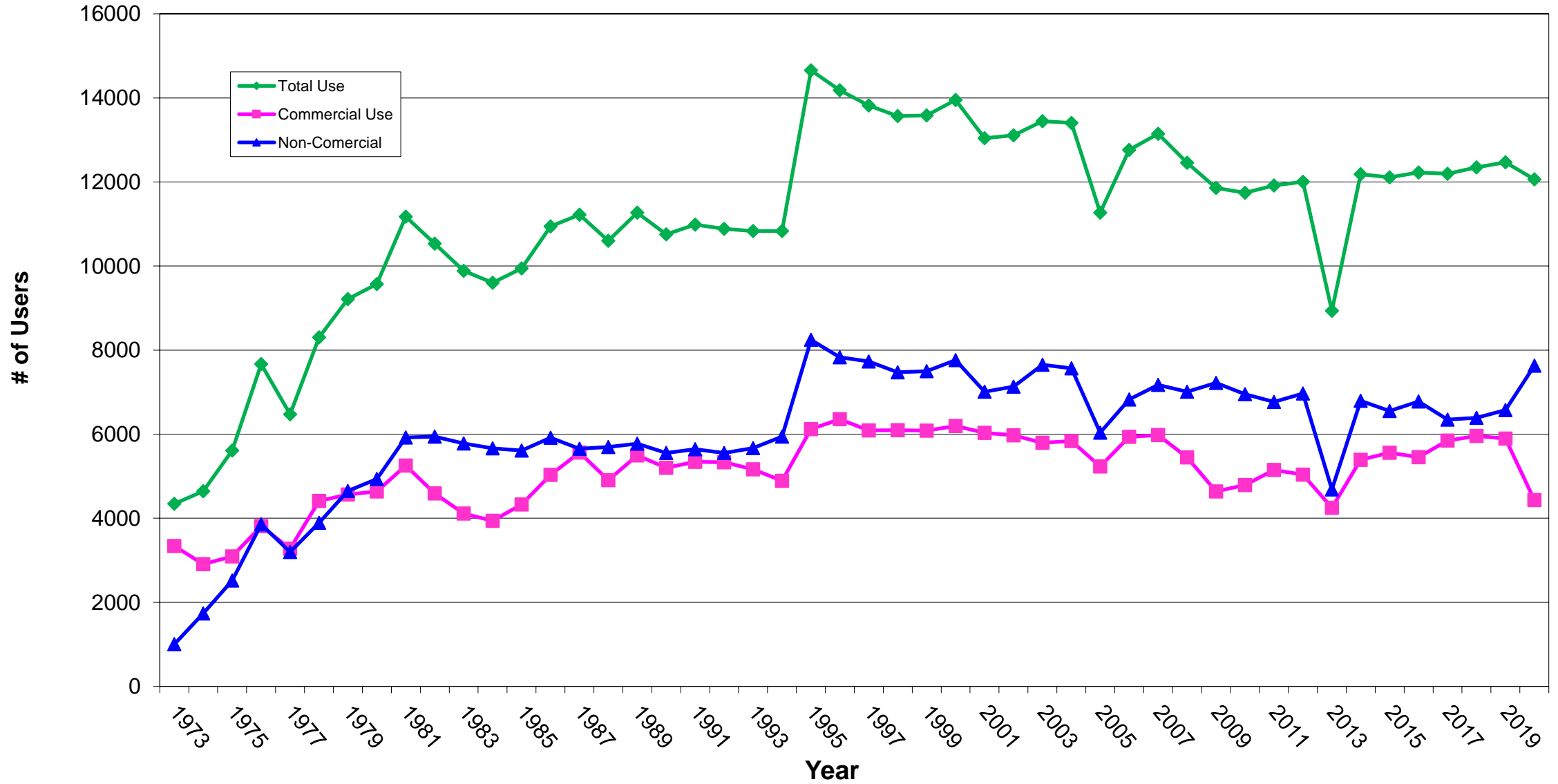
Noncommercial Party Information:

- 1410 parties were issued permits
- Average party size was 5 (5.41)
- Party leader's state of origin: Oregon - 892 (63%), California - 272 (20%), Washington – 116 (8%), Other – 130 (9%)

Number of Launches:

- A total of 1808 parties, commercial and noncommercial, launched to float the river
- The maximum number of launches in a single day was 22 launches, this occurred once in September and once in October.
- The month with the lowest average total launches per day was May, with 5.64 launches per day. The month with the highest average total launches per day was August, with 14.65 launches per day.

Rogue River Actual Use



Rogue River Actual Use Year To Year Comparison

YEAR	LENGTH OF SEASON	NONCOMMERCIAL		COMMERCIAL		TOTAL
		USE	% OF TOTAL	USE	% OF TOTAL	
1973 ¹	104 Days	1002	23%	3340	77%	4342
1974	103 Days	1736	37%	2908	63%	4644
1975	102 Days	2520	45%	3091	55%	5611
1976	107 Days	3854	50%	3814	50%	7668
1977	106 Days	3197	49%	3278	51%	6475
1978 ²	105 Days	3889	47%	4414	53%	8303
1979	104 Days	4646	50%	4565	50%	9211
1980	102 Days	4931	52%	4640	48%	9571
1981	108 Days	5919	53%	5255	47%	11174
1982	107 Days	5941	56%	4593	44%	10534
1983	106 Days	5778	58%	4110	42%	9888
1984	104 Days	5664	59%	3937	41%	9601
1985	103 Days	5613	56%	4328	44%	9941
1986 ³	107 Days	5915	54%	5030	46%	10945
1987	107 Days	5655	50%	5565	50%	11220
1988	107 Days	5695	54%	4907	46%	10602
1989	107 Days	5772	51%	5494	49%	11266
1990	107 Days	5552	52%	5202	48%	10754
1991	107 Days	5641	51%	5341	49%	10982
1992	107 Days	5553	51%	5332	49%	10885
1993	107 Days	5667	52%	5165	48%	10832
1994	107 Days	5940	55%	4890	45%	10830
1995 ⁴	154 Days	8243	56%	6122	42%	14655
1996	154 Days	7829	55%	6355	45%	14184
1997	154 Days	7728	56%	6091	44%	13819
1998	154 Days	7470	55%	6096	45%	13566
1999	154 Days	7498	55%	6083	45%	13581
2000	154 Days	7760	56%	6192	44%	13952
2001	154 Days	7008	54%	6032	46%	13040
2002	154 Days	7132	54%	5976	46%	13108
2003	154 Days	7652	57%	5795	43%	13447
2004	154 Days	7566	56%	5837	44%	13403
2005 ⁵	154 Days	6035	54%	5232	46%	11267
2006 ⁶	154 Days	6824	53%	5936	47%	12760
2007	154 Days	7170	55%	5977	45%	13147
2008	154 Days	7009	56%	5447	44%	12456
2009	154 Days	7217	61%	4639	39%	11856
2010	154 Days	6952	59%	4790	41%	11742
2011	154 Days	6766	57%	5149	43%	11915
2012	154 Days	6966	58%	5037	42%	12003
2013 ⁷	154 Days	4683	52%	4251	48%	8934
2014	154 Days	6792	56%	5390	44%	12182
2015	154 Days	6552	54%	5558	46%	12110
2016	154 Days	6776	55%	5451	45%	12227
2017	154 Days	6349	52%	5845	48%	12194
2018	154 Days	6389	52%	5958	48%	12347
2019	154 Days	6572	53%	5895	47%	12467
2020 ⁸	148 Days	7631	63%	4432	37%	12063

¹ No Regulated Use Season. Numbers are from agency monitoring, 1973

² Season was Friday before Memorial Day through Labor Day (1978-85)

³ Season changed to 6/1 through 9/15 (1986-94)

⁴ Season extended to 5/15 to 10/15 in 1995

⁵ Blossom Complex Fire River Closure 8/11-22, 2005

⁶ Commercial Non-Use regulated and monitored, beginning 2006

⁷ Big Windy Complex Fire River Closure 7/31-8/11 and Government Shutdown 10/1-16, 2013

⁸ COVID pandemic. Visitor Center was closed from 5/15-5/20.

Rogue River Actual Use Total Use Comparison Between Years

Year	Total Use	Use Difference	Percentage Difference
1973 ¹	4342		
1974	4644	302	7%
1975	5611	967	21%
1976	7668	2057	37%
1977	6475	-1193	-16%
1978 ²	8303	1828	28%
1979	9211	908	11%
1980	9571	360	4%
1981	11174	1603	17%
1982	10534	-640	-6%
1983	9888	-646	-6%
1984	9601	-287	-3%
1985	9941	340	4%
1986 ³	10945	1004	10%
1987	11220	275	3%
1988	10602	-618	-6%
1989	11266	664	6%
1990	10754	-512	-5%
1991	10982	228	2%
1992	10885	-97	-1%
1993	10832	-53	0%
1994	10830	-2	0%
1995 ⁴	14665	3835	35%
1996	14184	-481	-3%
1997	13819	-365	-3%
1998	13566	-253	-2%
1999	13581	15	0%
2000	13952	371	3%
2001	13040	-912	-7%
2002	13108	68	1%
2003	13447	339	3%
2004	13403	-44	0%
2005 ⁵	11267	-2136	-16%
2006 ⁶	12760	1493	13%
2007	13147	387	3%
2008 ⁷	12456	-691	-5%
2009	11856	-600	-5%
2010	11742	-151	-1%
2011	11915	173	1%
2012	12003	88	1%
2013 ⁸	8934	-3069	-26%
2014	12182	3248	36%
2015	12110	-72	-1%
2016	12227	117	1%
2017	12194	-33	0%
2018	12347	153	1%
2019	12467	120	1%
2020 ⁹	12063	-404	-3%

¹ No Regulated Use Season. Numbers are from agency monitoring, 1973

² Season was Friday before Memorial Day through Labor Day (1978-85)

³ Season changed to 6/1 through 9/15 (1986-94)

⁴ Season extended to 5/15 to 10/15 in 1995

⁵ Blossom Complex Fire River Closure 8/11-22, 2005

⁶ Commercial Non-Use regulated and monitored, beginning 2006

⁷ 2008 "Percentage Difference" has been recalculated using a different formula. As a result this column is different from previous years.

⁸ Big Windy Complex Fire River Closure 7/31-8/11 and Government Shutdown 10/1-16, 2013

⁹ COVID pandemic. Visitor Center was closed from 5/15-5/20.

Rogue River Actual Use Noncommercial Use Comparison Between Years

Year	Total Use	Use Difference	Percentage Difference
1973 ¹	1002		
1974	1736	734	73%
1975	2520	784	45%
1976	3854	1334	53%
1977	3197	-657	-17%
1978 ²	3889	692	22%
1979	4646	757	19%
1980	4931	285	6%
1981	5919	988	20%
1982	5941	22	0%
1983	5778	-163	-3%
1984	5664	-114	-2%
1985	5613	-51	-1%
1986 ³	5915	302	5%
1987	5655	-260	-4%
1988	5695	40	1%
1989	5772	77	1%
1990	5552	-220	-4%
1991	5641	89	2%
1992	5553	-88	-2%
1993	5667	114	2%
1994	5940	273	5%
1995 ⁴	8243	2303	39%
1996	7829	-414	-5%
1997	7728	-101	-1%
1998	7470	-258	-3%
1999	7498	28	0%
2000	7760	262	3%
2001	7008	-752	-10%
2002	7132	124	2%
2003	7652	520	7%
2004	7565	-87	-1%
2005 ⁵	6035	-1530	-20%
2006 ⁶	6824	789	13%
2007	7170	346	5%
2008 ⁷	7009	-161	-2%
2009	7217	208	3%
2010	6952	-265	-4%
2011	6766	-186	-3%
2012	6966	200	3%
2013 ⁸	4683	-2283	-33%
2014	6792	2109	45%
2015	6552	-240	-4%
2016	6776	224	3%
2017	6349	-427	-6%
2018	6389	40	1%
2019	6572	183	3%
2020 ⁹	7631	1059	16%

¹ No Regulated Use Season. Numbers are from agency monitoring, 1973

² Season was Friday before Memorial Day through Labor Day (1978-85)

³ Season changed to 6/1 through 9/15 (1986-94)

⁴ Season extended to 5/15 to 10/15 in 1995

⁵ Blossom Complex Fire River Closure 8/11-22, 2005

⁶ Commercial Non-Use regulated and monitored, beginning 2006

⁷ 2008 "Percentage Difference" has been recalculated using a different formula. As a result this column is different from previous years.

⁸ Big Windy Complex Fire River Closure 7/31-8/11 and Government Shutdown 10/1-16, 2013

⁹ COVID pandemic. Visitor Center was closed from 5/15-5/20.

Rogue River Actual Use Commercial Use Comparison Between Years

Year	Total Use	Use Difference	Percentage Difference
1973 ¹	3340		
1974	2908	-432	-13%
1975	3091	183	6%
1976	3814	723	23%
1977	3278	-536	-14%
1978 ²	4414	1136	35%
1979	4565	151	3%
1980	4640	75	2%
1981	5255	615	13%
1982	4593	-662	-13%
1983	4110	-483	-11%
1984	3937	-173	-4%
1985	4328	391	10%
1986 ³	5030	702	16%
1987	5565	535	11%
1988	4907	-658	-12%
1989	5494	587	12%
1990	5202	-292	-5%
1991	5341	139	3%
1992	5332	-9	0%
1993	5165	-167	-3%
1994	4890	-275	-5%
1995 ⁴	6122	1232	25%
1996	6355	233	4%
1997	6091	-264	-4%
1998	6096	5	0%
1999	6083	-13	0%
2000	6192	109	2%
2001	6032	-160	-3%
2002	5976	-56	-1%
2003	5795	-181	-3%
2004	5837	42	1%
2005 ⁵	5232	-605	-10%
2006 ⁶	5936	704	13%
2007	5977	41	1%
2008 ⁷	5447	-530	-9%
2009	4639	-808	-15%
2010	4790	151	3%
2011	5149	359	7%
2012	5037	-112	-2%
2013 ⁸	4251	-786	-16%
2014	5390	1139	27%
2015	5558	168	3%
2016	5451	-107	-2%
2017	5845	394	7%
2018	5958	113	2%
2019	5895	-63	-1%
2020 ⁹	4432	-1463	-25%

¹ No Regulated Use Season. Numbers are from agency monitoring, 1973

² Season was Friday before Memorial Day through Labor Day (1978-85)

³ Season changed to 6/1 through 9/15 (1986-94)

⁴ Season extended to 5/15 to 10/15 in 1995

⁵ Blossom Complex Fire River Closure 8/11-22, 2005

⁶ Commercial Non-Use regulated and monitored, beginning 2006

⁷ 2008 "Percentage Difference" has been recalculated using a different formula. As a result this column is different from previous years.

⁸ Big Windy Complex Fire River Closure 7/31-8/11 and Government Shutdown 10/1-16, 2013

⁹ COVID pandemic. Visitor Center was closed from 5/15-5/20.

2020 Scheduled Use and Actual Use Comparison

Scheduled Use

Noncommercial Use		
Lottery Starts	9457	
New Starts + Additions ¹	7410	
Total Use		16867
Commercial Use		
Calendar Starts	9353	
New Starts + Additions ¹	313	
Total Use ²		9666
Total Scheduled Use		26533

Actual Use

Noncommercial Use		
Lottery Starts	2506	
New Starts + Additions ¹	5125	
Total Use		7631
Commercial Use		
Calendar Starts	4119	
New Starts+ Additions ¹	313	
Total Use ²		4432
Total Actual Use		12063

- **45% of noncommercial scheduled spaces were used**
- **46% of commercial scheduled spaces were used**
- **45% of all scheduled spaces were actually used**

¹ Beginning 2005, "New Starts + Additions" is equivalent to "Pool" in past years.

² Flex spaces have been included in the Commercial Use Total as 'pool' spaces.

- Formulas:
 - Noncommercial actual use total [7631] divided by noncommercial scheduled use total [16867] times 100% = **45% noncommercial scheduled spaces were used**
 - Commercial actual use total [4432] divided by commercial scheduled use total [9666] times 100% = **46% commercial scheduled spaces were used**
 - Total actual use [12063] divided by total scheduled use [26533] times 100% = **45% of all scheduled spaces were actually used**

2020

Monthly Number of People

MONTH	Total People	Type of Use	Lottery/ Calendar	Pool	Total Scheduled People	CAN	Non Use	Flex	Actual Use
MAY	321	PRIVATE	791	313	1104	718	70	N/A	316
		COMMERCIAL	615	0	615	610	0	0	5
JUNE	2240	PRIVATE	1857	1814	3671	1372	595	N/A	1704
		COMMERCIAL	1790	42	1832	1297	1	2	536
JULY	3329	PRIVATE	1921	1399	3320	998	457	N/A	1865
		COMMERCIAL	2060	70	2130	670	9	13	1464
AUG	3221	PRIVATE	1918	1594	3512	1284	384	N/A	1844
		COMMERCIAL	2170	79	2249	852	29	9	1377
SEPT	1993	PRIVATE	2007	1532	3539	1369	927	N/A	1243
		COMMERCIAL	1924	68	1992	1241	4	3	750
OCT	959	PRIVATE	963	758	1721	730	332	N/A	659
		COMMERCIAL	794	27	821	488	33	0	300
Season Totals	12063	PRIVATE	9457	7410	16867	6471	2765	N/A	7631
		COMMERCIAL	9353	286	9639	5158	76	27	4432

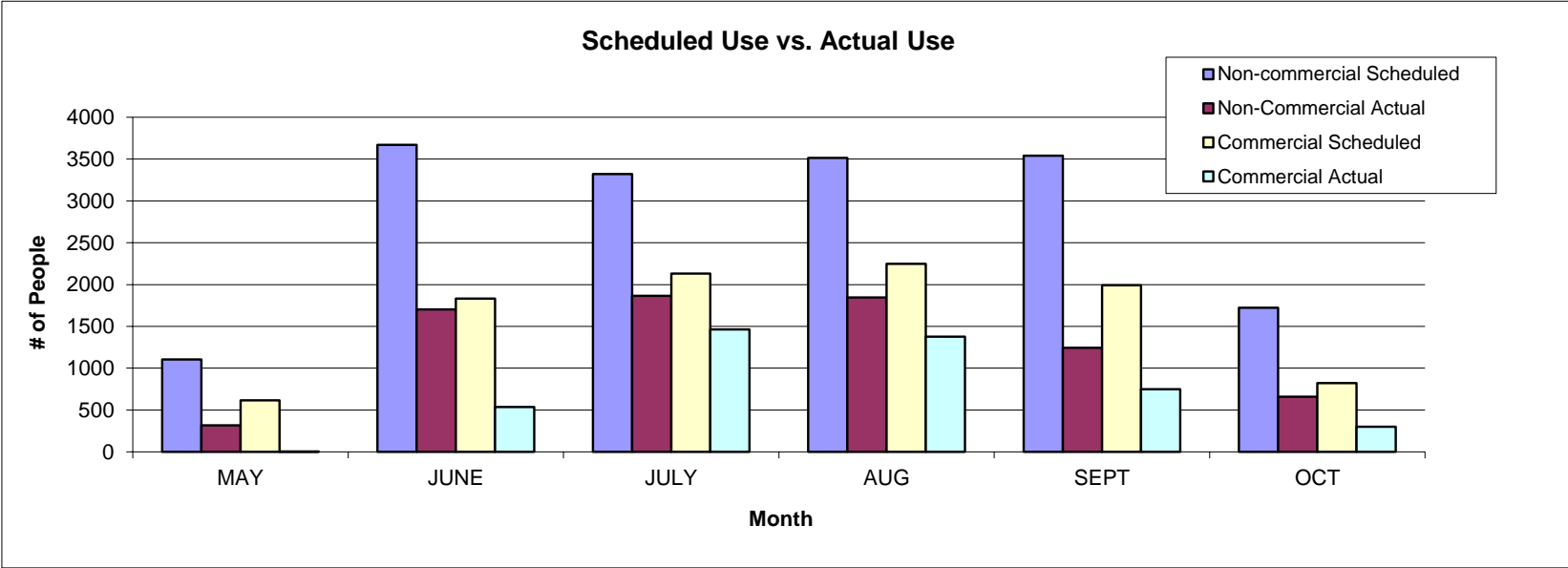
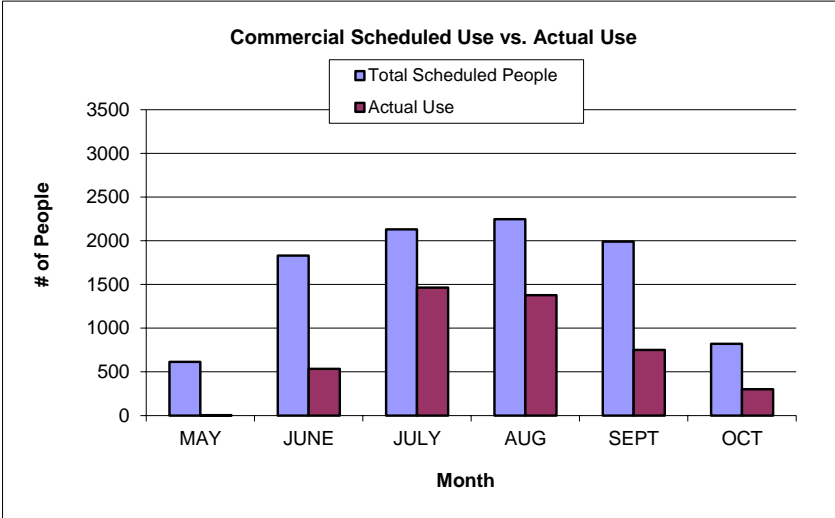
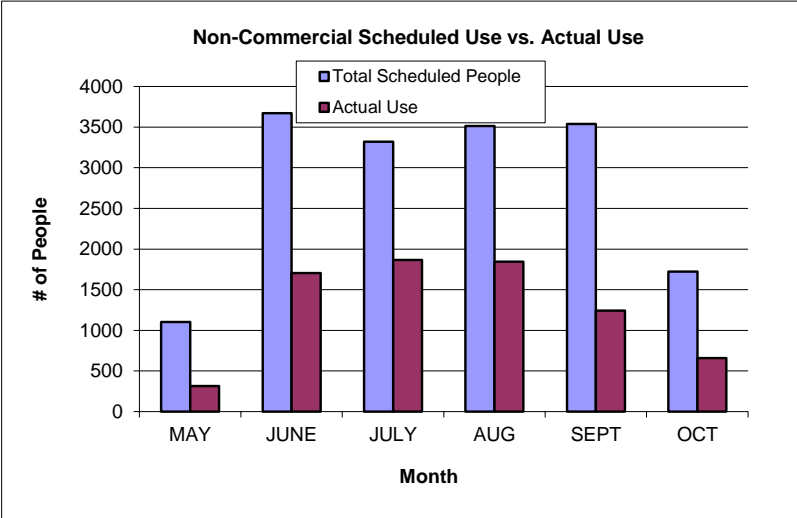
2020 Monthly Number of Launches

MONTH	Total Scheduled Launches	Total Actual Launches
MAY	172	62
JUNE	565	345
JULY	583	445
AUG	606	454
SEPT	647	332
OCT	290	170
Season Totals	2863	1808

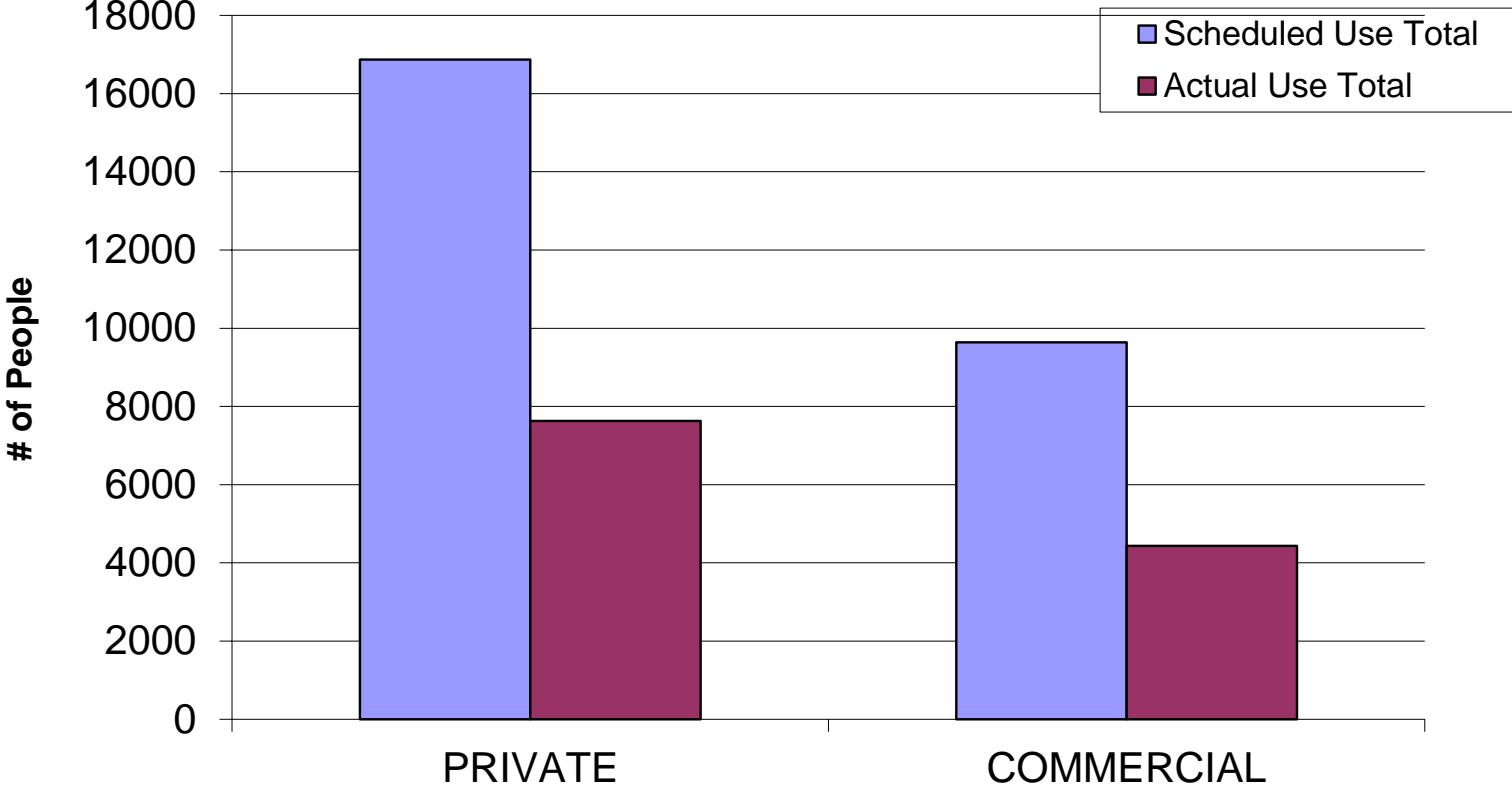
Type of Use	Scheduled Launches	Actual Launches
PRIVATE	128	61
COMMERCIAL	44	1
PRIVATE	445	293
COMMERCIAL	120	52
PRIVATE	448	332
COMMERCIAL	135	113
PRIVATE	465	342
COMMERCIAL	141	112
PRIVATE	482	248
COMMERCIAL	165	84
PRIVATE	229	134
COMMERCIAL	61	36
PRIVATE	2197	1410
COMMERCIAL	666	398

Monthly Averages and Maximums

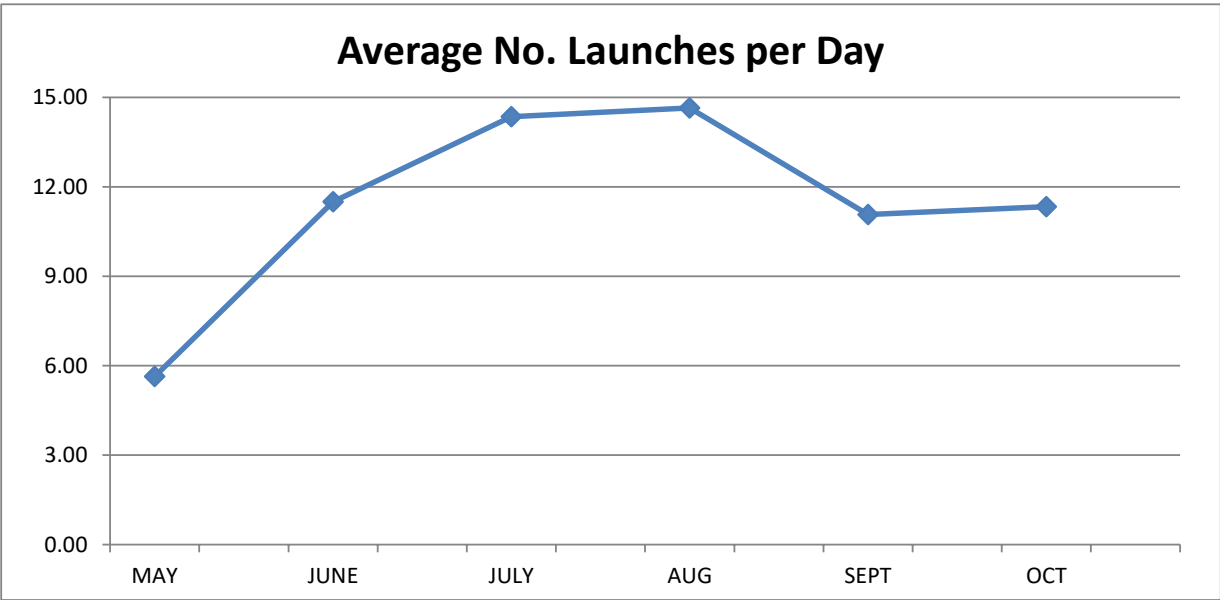
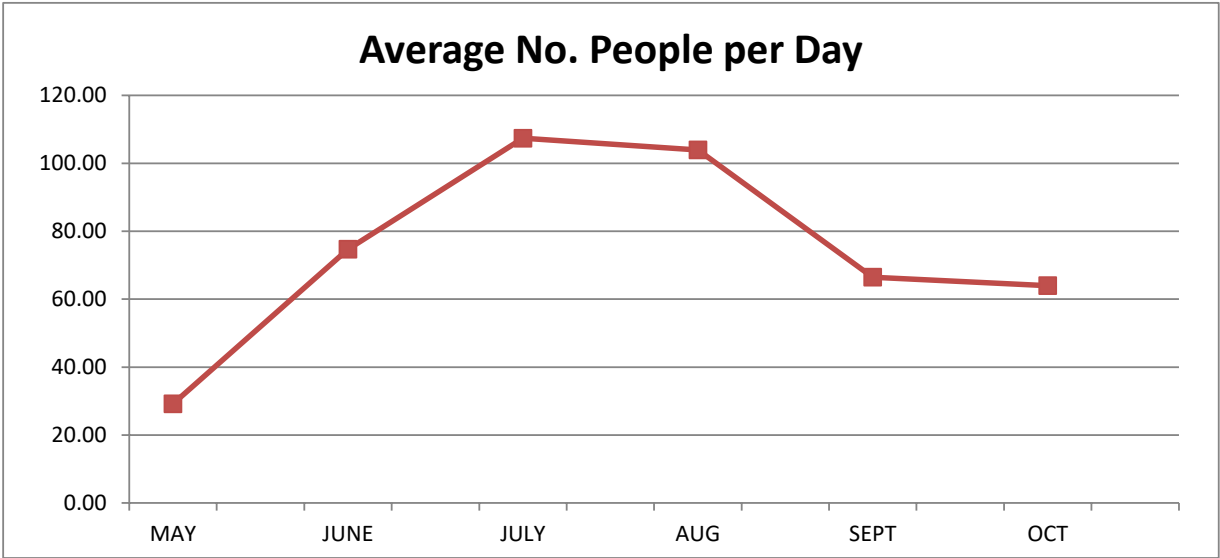
MONTH	Avg. Total People per Day	Avg. Total Launches per Day	Max Total Launches in Month
MAY	29.18	5.64	10
JUNE	74.67	11.50	19
JULY	107.39	14.35	19
AUG	103.90	14.65	21
SEPT	66.43	11.07	22
OCT	63.93	11.33	22
Highest Total Launches in Any Month			22



2020 Yearly Total Scheduled Use vs. Actual Use

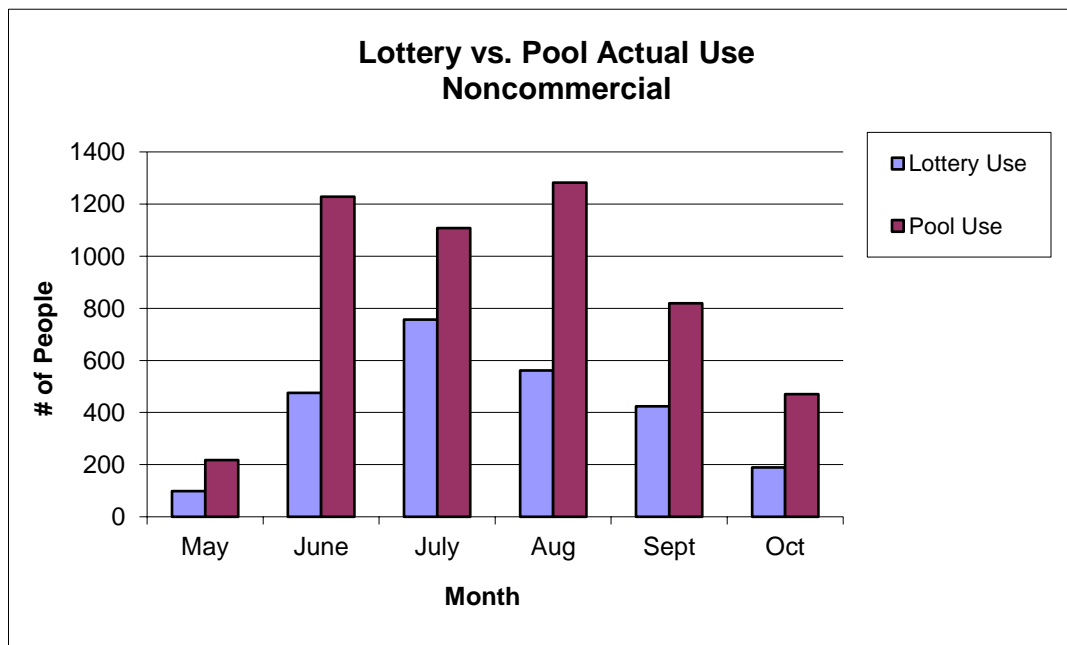


May 15 - Oct 15



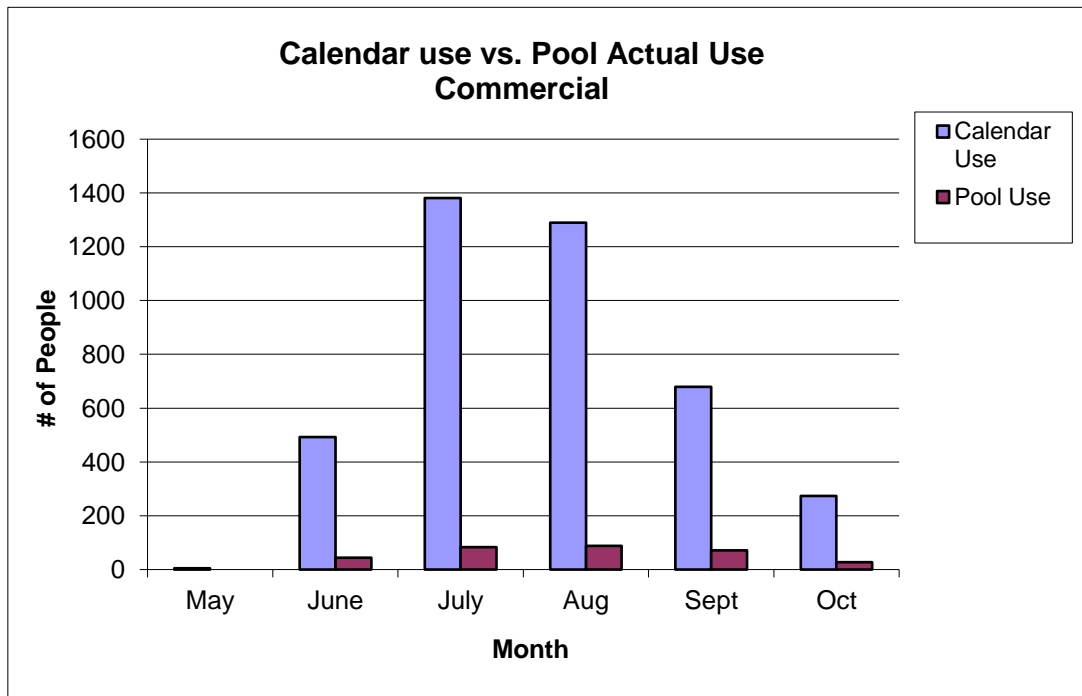
2020 Noncommercial Actual Use: Lottery vs. Pool Monthly

Month	Lottery Use	% of Use	Pool Use	% of Use	Total Actual Use
May	98	31%	218	69%	316
June	476	28%	1228	72%	1704
July	757	41%	1108	59%	1865
Aug	562	30%	1282	70%	1844
Sept	424	34%	819	66%	1243
Oct	189	29%	470	71%	659
Total	2506	33%	5125	67%	7631



2020 Commercial Actual Use: Calendar vs. Pool Monthly

Month	Calendar Use	% of Use	Pool Use	% of Use	Total Actual Use
May	5	100%	0	0%	5
June	492	92%	44	8%	536
July	1381	94%	83	6%	1464
Aug	1289	94%	88	6%	1377
Sept	679	91%	71	9%	750
Oct	273	91%	27	9%	300
Total	4119	93%	313	7%	4432



**Noncommercial Party Size Tally
Totals for 2020**

Party Size	Number of Parties	Number of People
1	60	60
2	339	678
3	146	438
4	216	864
5	96	480
6	134	804
7	84	588
8	71	568
9	53	477
10	54	540
11	37	407
12	34	408
13	19	247
14	22	308
15	7	105
16	14	224
17	12	204
18	3	54
19	3	57
20	6	120
Total	1410	7631

Party Leader's State of Origin

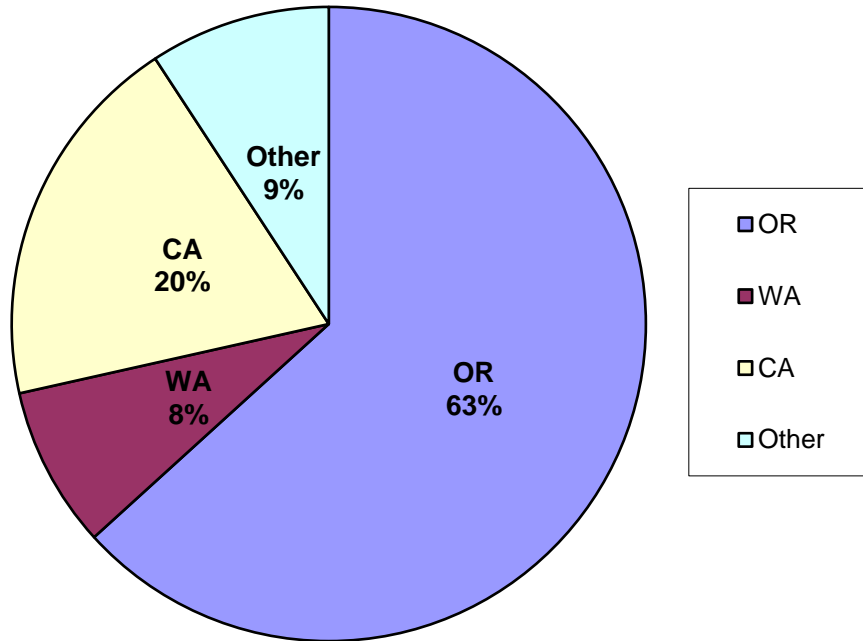
State	Number
OR	892
WA	116
CA	272
Other	130
Total	1410

Average Party Size = 5.41

Party Leader's State of Origin

State	Number
OR	892
WA	116
CA	272
Other	130
Total	1410

Party Leader State of Origin



**Commercial Party Size Tally
Totals for 2020**

Party Size	Number of Parties	Number of People
1	0	0
2	2	4
3	2	6
4	5	20
5	13	65
6	27	162
7	20	140
8	20	160
9	22	198
10	29	290
11	19	209
12	31	372
13	45	585
14	21	294
15	33	495
16	33	528
17	12	204
18	14	252
19	19	361
20	15	300
21	7	147
22	8	176
23	5	115
24	4	96
25	8	200
26	8	208
27	2	54
28	5	140
29	2	58
30	1	30
Total	432	5869

Average Party Size = 13.59

Off Season Noncommercial Totals (2019-2020)

Month	Number of Boats	Number of Parties	Number of People
Oct	193	48	285
Nov	44	8	62
Dec	2	2	3
Jan	2	1	3
Feb	31	5	46
Mar	18	9	30
Apr	45	25	89
May	191	71	320
Totals	526	169	838