



U.S. Department of the Interior  
Bureau of Land Management

# Canyon Pintado National Historic District

Northwest Colorado Resource Advisory Council Meeting

April 25, 2019







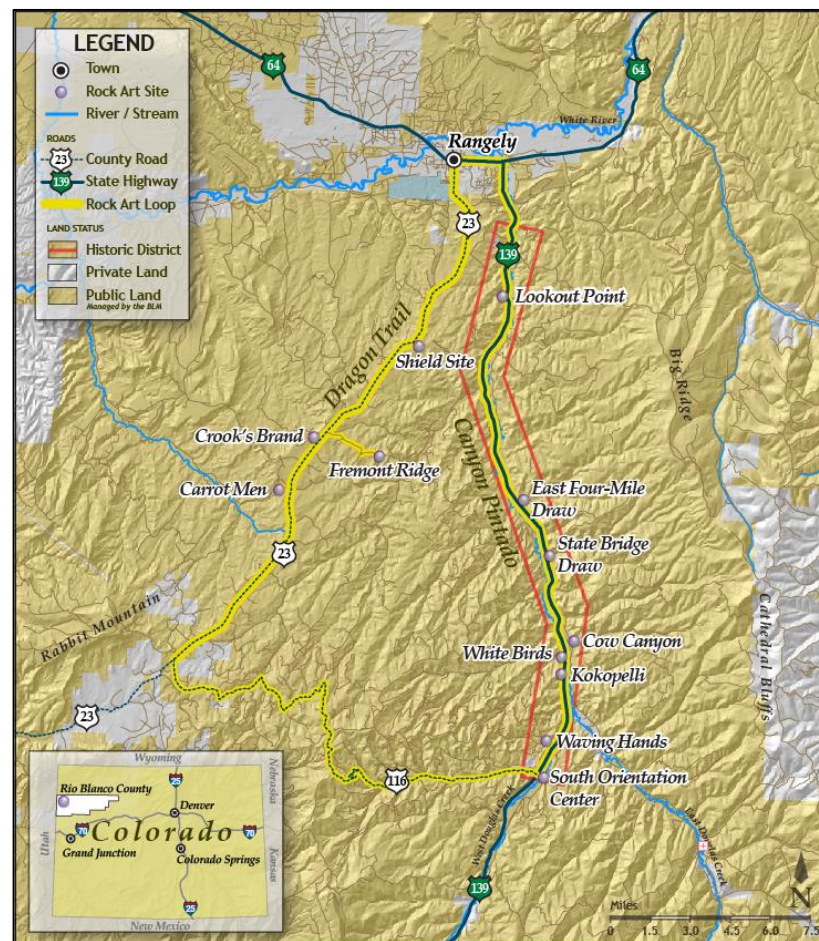
# Topics

- Canyon Pintado National Historic District Overview
- Occupation Timeline
- Advertised Sites
- Land Uses
- Current/Future Projects



# Canyon Pintado

- Canyon Pintado National Historic District (CPNHD)
- South of Rangely, CO (SH 139)
- Managed by the BLM White River Field Office (WRFO)





# CPNHD Management

- Nominated to the National Register of Historic Places (NRHP) in 1975
- Interpretive Plan 1997
- Interpretive site development and improvements







# CPNHD – The Basics

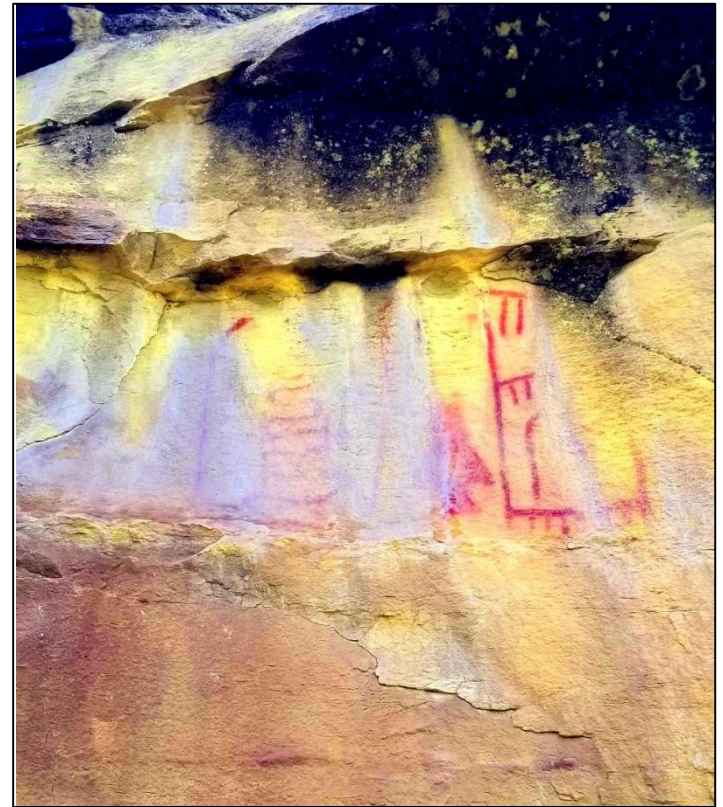
- Over 16,000 acres
- 15 miles
- 300+ sites and isolated finds
- 100+ rock art sites
- 13,000 years of history





# CPNHD Historic Overview

- “Painted Canyon”
- Ancient travel route
- Dominguez-Escalante Expedition
- Early cattle ranching
- Oil and gas development







U.S. Department of the Interior  
Bureau of Land Management

# Lookout Point







# East Four Mile Draw







U.S. Department of the Interior  
Bureau of Land Management

# State Bridge







U.S. Department of the Interior  
Bureau of Land Management

# Cow Canyon







# White Birds





# Kokopelli







# Waving Hands





# Multiple-Use in CPNHD

- Oil and gas development
- Grazing
- Recreation
- Cultural resource protection and education





# Current and Future Projects

- New interpretive panels and brochures
- Trail Improvements
- Site Stewards Program
- Dominguez-Escalante Inscription – Rangely Outdoor Museum
- East Four Mile Photogrammetry Project – DARG
- SRP Tours



# Questions?

