

Wilderness Inventory Unit Index of Documents  
**Winter Range OR-036-072, 11 total pages**

Page 1: Index Cover Sheet

[Page 2: Form 1 – Documentation of BLM Wilderness Inventory: Findings on Record](#)

[Page 5: Form 2 – Documentation of Current Wilderness Inventory Conditions](#)

[Page 9: Form 2 – Summary of Findings and Conclusion](#)

[Page 10: Wilderness Characteristics Overview–Winter Range OR-036-072 Map 1 of 2](#)

[Page 11: Wilderness Characteristics-Land Treatments-Winter Range OR-036-072 Map 2 of 2](#)

**Prepared by:  
U.S. Department of the Interior  
Bureau of Land Management  
Vale District Office  
100 Oregon Street  
Vale, Oregon 97918**



## **H-6300-1-WILDERNESS INVENTORY MAINTENANCE IN BLM OREGON/WASHINGTON**

### **APPENDIX B – INVENTORY AREA EVALUATION**

#### **Evaluation of Current Conditions:**

- 1) Document and review the existing BLM wilderness inventory findings on file, if available, regarding the presence or absence of individual wilderness characteristics, using Form 1, below.
- 2) Consider relevant information regarding current conditions available in the office to identify and describe any changes to the existing information (use interdisciplinary (ID) team knowledge, aerial photographs, field observations, maps, etc.), and document your findings on Form 2, below.

When Citizen Information has been submitted regarding wilderness characteristics, document the submitted materials including: date of Submission; Name of District(s) and Field Office(s) Affected; Type of material Submitted (e.g. narrative, map, photo). Evaluate any submitted citizen information regarding the validity of proposed boundaries of the unit(s), the existence of roads and other boundary features, the size of the unit(s), and the presence or absence of wilderness characteristics based on relevant information available in the office (prior BLM inventories, ID team knowledge, aerial photographs, field observations, maps, etc.)

Conduct field reviews as necessary to verify information and to ascertain current conditions. Reach conclusions on current conditions including boundaries, size of areas and presence or absence of wilderness characteristics. Fully explain the basis for each conclusion on form 2, including any critical differences between BLM and citizen information.

Document your findings regarding current conditions for each inventoried area. Describe how the present conditions are similar to, or have changed from, the conditions documented in the original wilderness inventory. Document your findings on Form 2 for each inventory area. Cite to or attach data considered, including photographs, maps, GIS layers, field trip notes, project files, *etc.*

Year: 2010 Unit Number/Name: OR-036-072—Winter Range

**FORM 1 -- DOCUMENTATION OF BLM WILDERNESS INVENTORY  
FINDINGS ON RECORD**

**1. Is there existing BLM wilderness inventory information on all or part of this area?**

Yes  No  (If yes, and if more than one unit is within the area, list the names of those units.):

**A.) Inventory Source(s) -- (X)** Denotes all applicable BLM Inventory files, printed maps, or published BLM Decision documents with information pertaining to this unit.

**Wilderness Inventories**

- (X) 1978 – 1980 -- BLM Wilderness Inventory Unit 3-145 of OR-03-11-06 Winter Range; partial of OR-03-13-16 Berber (unpublished BLM documents stored in Vale District case files)
- (X) April 1979 – *Wilderness -- Proposed Initial Inventory – Roadless Areas and Islands Which Clearly Do Not have Wilderness Characteristics, Oregon and Washington*

**Wilderness Decision Documents**

- (X) August 1979 – *Wilderness Review – Initial Inventory, Final Decision on Public Lands Obviously Lacking Wilderness Characteristics and Announcement of Public Lands to be Intensively Inventoried for Wilderness Characteristics, Oregon and Washington* (green document)
- (X) October 1979 – *Wilderness Review – Intensive Inventory - Oregon, Proposed Decision on the Intensive Wilderness Inventory of Selected Areas* (grey document).
- (X) March 1980 – *Wilderness Review – Intensive Inventory; Final Decisions on 30 Selected Units in Southeast Oregon and Proposed Decisions on Other Intensively Inventoried Units in Oregon and Washington* (orange document)
- (X) November 1980 - *Wilderness Inventory – Oregon and Washington, Final Intensive Inventory Decisions* (brown document)
- ( ) November 1981 *Stateline Intensive Wilderness Inventory Final Decision, Oregon, Idaho, Nevada, Utah* (tan document).

**B.) Inventory Unit Name(s)/Number(s)**

BLM Wilderness Inventory Unit 3-145 of OR-03-11-06 Winter Range;  
Partial of OR-03-13-16 Berber

**C.) Map Name(s)/Number(s)**

- Final Decision – Initial Wilderness Inventory Map, August 1979, Oregon
- Proposed Decision -- Intensive Wilderness Inventory of Selected Areas Map, October 1979, Oregon
- Intensive Wilderness Inventory Map, March 1980, Oregon
- Intensive Wilderness Inventory --Final Decisions Map, November 1980, Oregon.
- November, 1981 *Stateline Intensive Wilderness Inventory Final Decision, Oregon, Idaho, Nevada, Utah* (tan document).

**D.) BLM District(s)/Field Office(s)**

Vale District Office

Jordan Field Office

**2. BLM Inventory Findings on Record**

(Existing inventory information regarding wilderness characteristics (if more than one BLM inventory unit is associated with the area, list each unit and answer each question individually for each inventory unit):

**Inventory Source:** See above.

Unit# / Name	Size (historic acres)	Natural Condition? Y/N	Outstanding Solitude? Y/N	Outstanding Primitive & Unconfined Recreation? Y/N	Supplemental Values? Y/N
3-145 of OR-03-11-06 Winter Range	86,060	N	N	N	Y
Partial of OR-03-13-16 Berber	1,420	*	*	*	*
<b>TOTAL</b>	87,480				

\* These criteria were not addressed during the inventory of this unit.

## **H-6300-1-WILDERNESS INVENTORY MAINTENANCE IN BLM OREGON/WASHINGTON**

### **APPENDIX B – INVENTORY AREA EVALUATION**

#### **Evaluation of Current Conditions:**

- 1) Document and review the existing BLM wilderness inventory findings on file, if available, regarding the presence or absence of individual wilderness characteristics, using Form 1, below.
- 2) Consider relevant information regarding current conditions available in the office to identify and describe any changes to the existing information (use interdisciplinary (ID) team knowledge, aerial photographs, field observations, maps, etc.), and document your findings on Form 2, below.

When Citizen Information has been submitted regarding wilderness characteristics, document the submitted materials including: date of Submission; Name of District(s) and Field Office(s) Affected; Type of material Submitted (e.g. narrative, map, and photos). Evaluate any submitted citizen information regarding the validity of proposed boundaries of the unit(s), the existence of roads and other boundary features, the size of the unit(s), and the presence or absence of wilderness characteristics based on relevant information available in the office (prior BLM inventories, ID team knowledge, aerial photographs, field observations, maps, etc.)

Conduct field reviews as necessary to verify information and to ascertain current conditions. Reach conclusions on current conditions including boundaries, size of areas and presence or absence of wilderness characteristics. Fully explain the basis for each conclusion on form 2, including any critical differences between BLM and citizen information.

Document your findings regarding current conditions for each inventoried area. Describe how the present conditions are similar to, or have changed from, the conditions documented in the original wilderness inventory. Document your findings on Form 2 for each inventory area. Cite to or attach data considered, including photographs, maps, GIS layers, field trip notes, project files, *etc.*

## **FORM 2 -- DOCUMENTATION OF CURRENT WILDERNESS INVENTORY CONDITIONS**

**Unit Number/Name** OR-036-072 -- Winter Range

**Description of Current Conditions:** [Include land ownership, location, topography, vegetation features and summary of major human uses/activities.]

### **1. Is the unit of sufficient size?**

Yes   X   No           

**Description:** Refer to this inventory unit's associated Map 1 for its location. The 90,815 acre unit was included as part of the original BLM unit 3-145 of OR-03-11-06 Winter Range and a partial of OR-03-13-16 Berber of the latter 1970s meeting the size criteria. Acreage for unit OR-036-072 in Form 2 is calculated from BLM GIS information. The 3,335 acre difference from Form 1 occurs because the unit was determined by the current inventory to have state land inventoried for wilderness characteristics that was in the process of being transferred into BLM ownership during the initial inventory of 1978. The transfer was completed and the acreage is now under BLM management. The remaining difference from Form 1 was either boundary adjustments, not calculated properly or resulted from a rounding error from methods and maps used in the initial 1978 inventory. The unit also contains two private inholdings for a total of 80 acres.

The unit boundary on the north consists of BLM road 6359-0-00, a non-numbered road segment that travels to the north that joins with BLM road 6359-0-00, and BLM road 6357-0-00; the east boundary consists of BLM road 6357-0-00 and one mineral material site right-of-way; the south boundary is BLM roads 6376-0-0A0, 6357-0-00, 6360-0-0A0, private property, one non-numbered road segment, and BLM road 6360-0-00; and the west boundary is a non-numbered road segment, private property, a non-numbered road segment, private property, and two non-numbered road segments. The natural-surfaced boundary roads receive mechanical maintenance as needed to keep them passable on a regular and continuous (seasonal) basis.

### **2. Is the unit in a natural condition?**

Yes            No   X   N/A           

**Description:** The unit is dominated by low profiled rolling hills and extended nearly flat terrain. Elevations range from 3,881 feet to 5,002 feet, with the upper elevations located mostly in the unit's southeastern sector. The unit's small drainages flow mostly toward the northwest and north into Dry Creek that runs along the unit's northern boundary or to Rattlesnake Creek located along the western boundary. All drainage from these streams

eventually flows westward to Crooked Creek. Vegetation consists predominately of big and low sagebrush with both native and non-native grass species. Much of this unit has repeatedly been subject to multiple wildfires over the past five decades. The unit is affected by a portion of the Jackies Butte Wild Horse Herd Management Area within its larger Jackies Butte Wild Horse Herd Area.

Refer to this inventory unit's associated Map 1 and Map 2 for its human developments. Human imprints within the unit include 77.0 miles of about 30 motorized primitive trails, 40.25 miles of fenceline, 24.2 miles of 2 pipeline systems with 24 troughs, 7 earthen reservoirs, 2 developed springs, one mineral material site right-of-way, and one fenced enclosure. The unit is substantially dissected through its middle by numerous spatially close MPTs.

Additionally, there have been 30 vegetation manipulation (implemented 1962-2008) projects within the unit, none which presently have noticeable linear manmade contrasts over the terrain created at the time of furrowed disc seeding following wildfires. Vegetation treatments numbers include both the vegetation alteration treatment and the reseeding operation to rehabilitate the vegetation alteration. The repeated fires which have affected a majority of the unit has created a present circumstance by which an average visitor can more so readily view the developments described above, aided also by the largely flat to near flat terrain which has been historically burned.

In summary, due to the number readily observable intrusions and their proximity to each other, the works of man are substantially noticeable. Overall, unit OR-036-072 appears to be primarily affected by the influences of man with the imprint of humans noticeable to the average visitor.

### 3. Does the unit have outstanding opportunities for solitude?

Yes \_\_\_\_\_ No   X   N/A \_\_\_\_\_

**Description:** Refer to this inventory unit's associated Map 1 for visual of unit configuration. The unit is irregular in shape and varies from approximately 7 to 11 miles long from north to south and up to 14.5 miles wide near the center. The northeast section extends from the main body of the unit and forms a rectangle about 5 miles wide and 4 miles long. The majority of the unit consists of a flat to rolling open sagebrush plateaus that slope to the north and west.

Topographic relief within the unit ranges from 3,881 to 5,002 feet in elevation. Elevation changes are gradual in most of the unit traversing from west to east and average less than 80 feet of elevation change per mile. The prominent land marks within the unit are Jackies Butte and Caviatta Ridge. The unit lacks vegetative screening because numerous historic wildfires have removed broad expanses of low and big sagebrush and limit the

ability for a visitor to find seclusion. Despite the relatively large size of the unit, the irregular configuration of unit is not conducive to provide opportunities for solitude. The present inventory agrees with the 1979 inventory that determined the area did not have outstanding opportunities for solitude based on the irregular shape, absence of vegetation screening, and little diversity in relief. Because of the reasons stated above, BLM concludes that unit OR-036-072 does not provide outstanding opportunities for solitude.

**4. Does the unit have outstanding opportunities for primitive and unconfined recreation?**

Yes \_\_\_\_\_ No   X   N/A \_\_\_\_\_

**Description:** The most dominate dispersed recreation activity of the area is hunting of game species (primarily deer, chukar and antelope). Horseback riding and hiking are hunt-associated activities. A visitor may occasionally view wild horses within the unit. The unit is affected by a portion of the Jackies Butte Wild Horse Herd Management Area and a large portion of the Jackies Butte Wild Horse Herd Area in the north-northeast portion of the unit. While a less common and interesting viewing experience, wild horses are not considered to be an outstanding primitive and unconfined recreational experience. Recreational pursuits within the area, individually or collectively, are not outstanding in character or nature. BLM concludes that unit OR-036-072 does not provide outstanding opportunities for primitive and unconfined recreation.

**5. Does the unit have supplemental values?**

Yes   X   No \_\_\_\_\_ N/A \_\_\_\_\_

**Description:** BLM has documented 2 sage grouse leks within the unit. The bird is a BLM special status animal species.



**Summary of Findings and Conclusion**

**Unit Name and Number:** OR-036-072 -- Winter Range

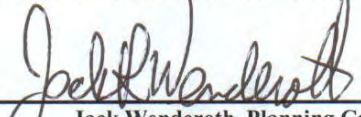
**Summary Results of Analysis:**

- 1. Does the area meet any of the size requirements?  Yes  No
- 2. Does the area appear to be natural?  Yes  No
- 3. Does the area offer outstanding opportunities for solitude or a primitive and unconfined type of recreation?  Yes  No  NA
- 4. Does the area have supplemental values?  Yes  No  NA

**Conclusion -- check one:**

The area, or a portion of the area, has wilderness character.

The area does not have wilderness character.

**Prepared by:**  3/3/10  
Jack Wenderoth, Planning Contractor

**Team Members:**

<u></u>	<u>3/10/2010</u>
Richard White, Rangeland Management Specialist	Date
<u></u>	<u>2/10/10</u>
Dave Draheim, Outdoor Recreation Planner	Date
<u></u>	<u>3/23/2010</u>
Garth Ross, Wildlife Biologist	Date
<u></u>	<u>3-4-2010</u>
Jon Sadowski, Environmental Contractor	Date
<u></u>	<u>05/03/10</u>
Eian Ray, GIS Specialist, Contractor	Date
<u></u>	<u>3/6/10</u>
Brent Grasty, GIS Coordinator	Date

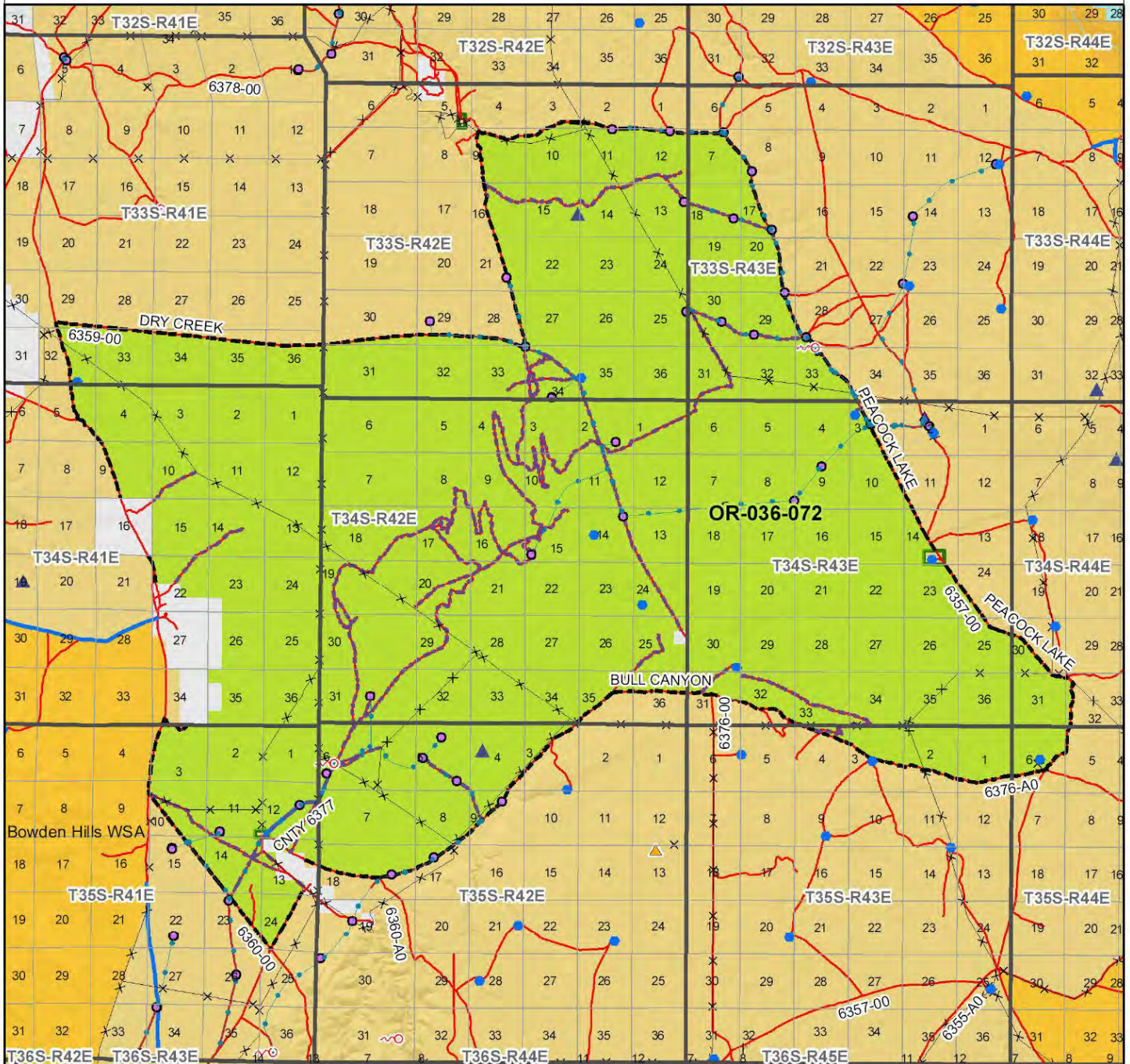
**Approved by:**  
 4/6/10  
Carolyn Freeborn, Jordan Resource Area Field Manager Date

*This form documents information that constitutes an inventory finding on wilderness characteristics. It does not represent a formal land use allocation or a final agency decision subject to administrative remedies under either 43 CFR parts 4 or 1610.5-2.*



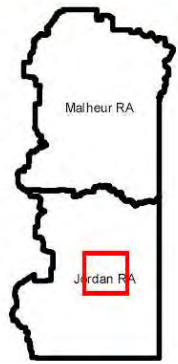
# Wilderness Characteristics - Overview

## Winter Range - OR-036-072 - Map 1 of 2



### Legend

- |   |  |
|---|--|
| <ul style="list-style-type: none"> <li> Developed Spring</li> <li> Wildlife Guzzler</li> <li> Earthen Reservoir</li> <li> Pipeline</li> <li> Trough</li> <li> Fence</li> <li> Storage Tank</li> <li> Surface Mining Disturbance</li> <li> Sage Grouse Lek</li> <li> Special Status Plant</li> <li> BLM Wild Char Inventory Unit</li> <li> Wilderness Study Area</li> <li> Mineral Material Site</li> <li> Road/Utility Right-of-Way</li> <li> Major Water Body</li> </ul> | <ul style="list-style-type: none"> <li><b>Route Types - BLM Determination</b></li> <li> Boundary Road</li> <li> Mobilized Primitive Trail (MPT)</li> <li> Discontinued Use</li> <li><b>Routes - Outside Wild Char Unit</b></li> <li> County</li> <li> Major Highway</li> <li> BLM Numbered &amp; Other Routes</li> <li><b>Land Ownership</b></li> <li> Bureau of Land Management</li> <li> State</li> <li> Private</li> <li> Other Federal Land</li> </ul> |
|---|--|



U.S. DEPARTMENT OF THE INTERIOR  
BUREAU OF LAND MANAGEMENT



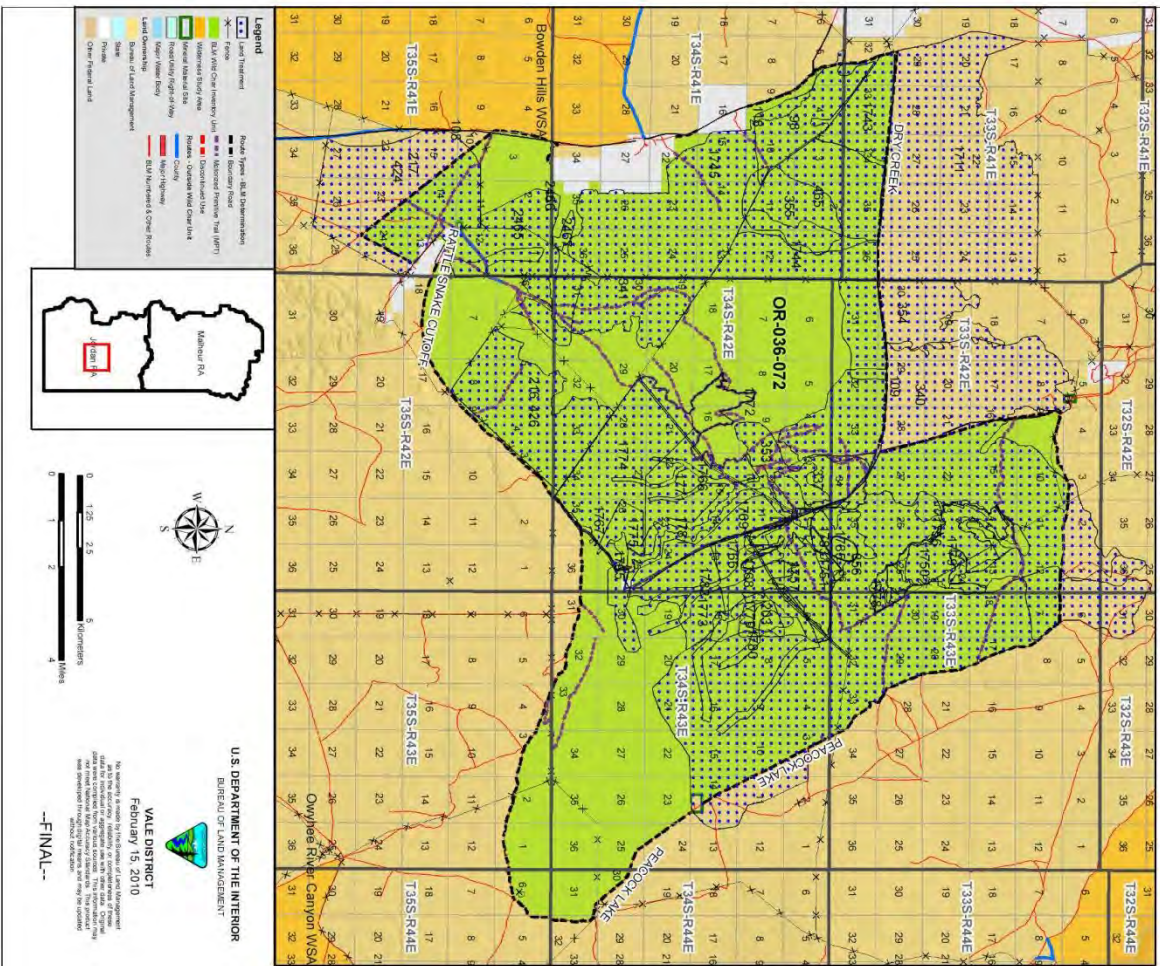
**VALE DISTRICT**  
February 15, 2010

No warranty is made by the Bureau of Land Management as to the accuracy, reliability, or completeness of these data for individual or aggregate use with other data. Original data were compiled from various sources. This information may not meet National Map Accuracy Standards. This product was developed through digital means and may be updated without notification.

--FINAL--



Wilderness Characteristics - Land Treatments  
Winter Range - OR-036-072 - Map 2 of 2



Wilderness Characteristics - Land Treatments  
Winter Range - OR-036-072 - Map 2 of 2

OBJECTID*	NAME	TREATMENT TYPE	SEED GROUP	DATE
98	JACKIES BUTTE BS SEEDING	Drill Seeding	Non-native Grasses	20061115
108	ROME WUI	Plow/Disc	Not Applicable	20060701
109	ROME WUI	Plow/Disc	Not Applicable	20060701
118	ROME WUI	Brushbeat	Not Applicable	20060701
203	NORTH CAVIATTA SDG	Drill Seeding	Combination	2000
216	BULL CR SDG	Plow/Disc	Not Applicable	1985
217	BEBER SDG	Plow/Disc	Not Applicable	1965
337	INDIAN FORT SDG	Drill Seeding	Non-native Grasses	1975
340	INDIAN FORT ESR SDG	Drill Seeding	Combination	1996
341	BATTLE CR ESR	Drill Seeding	Combination	1996
353	BATTLE CR ESR	Drill Seeding	Combination	1996
354	BATTLE CR ESR	Drill Seeding	Combination	1996
355	INDIAN FORT ESR	Drill Seeding	Combination	1983
356	INDIAN FORT SDG	Drill Seeding	Non-native Grasses	1975
424	BEBER SDG	Drill Seeding	A mix of non-native gr	1965
426	BULL CR SDG	Drill Seeding	Non-native Grasses	1983
465	JACKIES BUTTE REHAB	Drill Seeding	Non-native Grasses	20020225
1711	WINTER ONE	Drill Seeding	Unknown	20011101
1743	NORTH BOWDEN	Drill Seeding	Unknown	20011101
1744	EAST BOWDEN	Drill Seeding	Unknown	20011101
1745	MAIN BOWDEN	Drill Seeding	Unknown	20011101
1750	JACKIES BUTTE ESR	Aerial Seeding	Unknown	20020301
1751	JACKIES BUTTE ESR	Aerial Seeding	Unknown	20020301
1756	JACKIES BUTTE CULTPAK	Cultipack	Not Applicable	20020228
1757	JACKIES BUTTE CULTPAK	Cultipack	Not Applicable	20020304
1765	WHTEMULE ESR	Aerial Seeding	Shrubs	20010101
1766	WHTEMULE ESR	Aerial Seeding	Non-native Forbs	20010101
1767	WHTEMULE ESR	Aerial Seeding	Non-native Forbs	20010101
1768	WHTEMULE ESR	Drill Seeding	Unknown	20011215
1769	WHTEMULE ESR	Drill Seeding	Unknown	20011215
1770	WHTEMULE ESR	Drill Seeding	Unknown	20011215
1771	WHTEMULE ESR	Drill Seeding	Unknown	20011215
1772	WHTEMULE ESR	Drill Seeding	Unknown	20011215
1773	WHTEMULE ESR	Drill Seeding	Unknown	20011215
1774	WHTEMULE ESR	Drill Seeding	Unknown	20011215
1775	WHTEMULE ESR	Drill Seeding	A mix of native grasses	20011215
1778	CARGULE FIX	Drill Seeding	Unknown	20020225
1779	NORTH DRY SEEDING	Drill Seeding	Unknown	20020225
1780	WHTEMULE ESR	Aerial Seeding	Shrubs	20010101
1781	WHTEMULE ESR	Aerial Seeding	Shrubs	20010101
1782	WHTEMULE ESR	Aerial Seeding	Shrubs	20010101
1783	SOUTH DRY SEEDING	Drill Seeding	Unknown	20020225
1785	SOUTH DRY SEEDING	Drill Seeding	Unknown	20020225
2465	JACKIES BUTTE 08 ESR	Drill Seeding	Non and Native Grass	20081107
2466	JACKIES BUTTE 08 ESR	Broadcast Seeding	Non and Native Grass	20081211
2467	JACKIES BUTTE 08 ESR	Broadcast Seeding w/	Non and Native Grass	20081211

Note: The Land Treatments represented by navy blue dots on the map to the left are labeled with the treatments' ObjectIDs listed in the first field of the Land Treatments table shown above. Multiple types of treatments may have been applied to the same area. For example, one treatment area may have been plowed and drill seeded - a record is shown in the table for each type of treatment.