

Northern Nevada Correctional Center Saddle-Trained Wild Horse Adoption



Saturday, June 8, 2019

**Up to 12 Saddle-started
Horses and two Halter-started
Burros available for Adoption**



9:00-10:00am: Preview Wild Horses & Burros

10:00am: Competitive-Bid Adoption begins



1721 Snyder Avenue, Carson City, NV 89701



About the Northern Nevada Correctional Center program

The gentling, saddle-training program in Carson City began in October 2000 as a cooperative effort between the Nevada Department of Corrections – Silver State Industries and the Nevada Department of Agriculture to train stray / feral horses removed from lands administered by the State of Nevada. BLM joined the partnership in 2004; through an agreement signed in 2007, and a renewed contract in 2018, the inmates now train only wild horses and burros removed from public lands administered by the Bureau of Land Management.

The BLM and Northern Nevada Correctional Center (NNCC) hosts three to four public adoptions each year and all horses and burros are offered through a competitive-bid adoption process, conducted by an auctioneer. Approximately 60 - 80 wild horses and burros are trained and adopted each year through these public events. In addition, the NNCC starts horses for other Federal and state agencies such as the U.S. Border Patrol, state fish and wildlife agencies the National Park Service, Law Enforcement Mounted Units and Military Mounted Units.

Nearly 500 inmates have participated in the program, often coming with little or no experience working with horses. The inmates give each horse (or burro) approximately 120 days of training. The animals are essentially “green broke” and will need additional daily training and handling by an experienced rider when at their new home.

Find out more details on this exceptional program by going to the NNCC page located on the BLM website at <https://go.usa.gov/xEk8t> and stay up to date on the Bureau of Land Management’s Nevada wild horse and burro program, including upcoming events or news, by following the BLM Nevada Facebook page at <https://www.facebook.com/BLMNevada>. In addition, a Facebook Group, called “NNCC Adopted Wild Horses & Burros” was established by and for past adopters to post updates of their adopted horses from the NNCC and use as a resource for questions and tips.



Bids start at \$150

All trained animals will only be offered for adoption once during the event.

Adopters must meet BLM adoption requirements to bid.

Go to <https://go.usa.gov/xmcwS> for BLM requirements

**Directions to the Northern Nevada Correctional Center
traveling from the south side of Carson City:**

From US-395 (Carson Street),

Take Snyder Avenue (NV State Route 518) east for 1.5 miles.

**Turn south (right) at the NNCC sign and look for directional signs at
the far south end of the facility.**

Directions traveling south from Reno:

Take 1-580 South to Carson Street and turn north (right).

Take Snyder Avenue (NV State Route 518) east for 1.5 miles.

**Turn south (right) at the NNCC sign and look for directional signs at
the far south end of the facility.**

NO TOBACCO AND CELL PHONES ARE PERMITTED ON THE GROUNDS DURING THE EVENT!

NO PHOTOGRAPHY WITHOUT MEDIA CREDENTIALS OR PRIOR APPROVAL



Adoption sponsored by:

**Nevada Department of Corrections – Silver State Industries and the
Bureau of Land Management, Wild Horse and Burro Program**

Cisco #1868



Freezemark #15621868
Age 4
Sex: Gelding
Height: 15.0 hands
Weight: 1,000 pounds
HMA: Pancake
(NV0415)
Trainer: James Hotta

Cisco has never bucked, is gentle and easy to handle. He is good to trim and loads in a trailer very well! He has been ridden by novice trainers and is a pleasure to work with both on the ground and in the saddle. Cisco was gathered on October 2, 2016.

Punchy #4761



Freezemark #14624761
Age 5
Sex: Gelding
Height: 15.3 hands
Weight: 1.075 pounds
HMA: Rock Creek
(NV0103)
Trainer: Theodore Villa

Punchy is a gentle and friendly horse. He has been ridden in all types of terrain and is always ready to go. Punchy trailer loads easily and is willing to please; he is an all-around, nice horse and most of all a great companion. Punchy was gathered on November 14, 2016.

2-Piece #6588



Freezemark #14626588
Age 5
Sex: Gelding
Height: 15.1 hands
Weight: 1,023 pounds
HMA: Maverick-Medicine
(NV0105)
Trainer: Corey Arrive

2-Piece is a flashy, sorrel colored gelding that responds well to cues. He walks, trots and lopes at a comfortable speed, as well as performing side passes great and trailer loads. Closing and opening gates is an easy process with his calm demeanor. 2-Piece was gathered on February 13, 2018.

Benny Blanco #8295



Freezemark #11628295
Age 8
Sex: Gelding
Height: 16.0 hands
Weight: 1,150 pounds
HMA: Snowstorms Mtns
(NV0201)
Trainer: Miguel Villa

Benny is big, gray gelding that responds well to my foot cues, trailer loads easily, and has a nice canter. He has a smooth long lope and stops instantly upon command. He has a wonderful trail walk along with his gentle personality, which makes him an ideal horse for any situation. Benny would be perfect for a confident medium rider or an experienced one. He was gathered on September 24, 2018.

Kane #6202



Freezemark #14626202
Age 5
Sex: Gelding
Height: 14.3 hands
Weight: 1,000 pounds
HMA: Triple B
(NV0417)
Trainer: Devin Whitmore

Kane is a beautiful, 5-year-old strawberry roan. He is a well-trained horse that listens and responds to all cues. He trots, lopes, gallops very well, and is trailer ready. Kane is very teachable that I believe will turn out to be a fine horse. Kane was gathered on February 5, 2018.

Shotgun #6200



Freezemark #15626200
Age 4
Sex: Gelding
Height: 15.0 hands
Weight: 1,050 pounds
HMA: Triple B
(NV0417)
Trainer: John J. Hare

Shotgun, a 4-year-old bay, has been a great addition to our team and is a joy to work with. He is eager to learn and is full of energy. He responds well to leg cues, side passes and can be ridden with a passenger. He trailer loads easy and rides well even with beginners. Shotgun was gathered on February 5, 2018.

Dayton #5190



Freezemark #15625190
Age 4
Sex: Gelding
Height: 15.3 hands
Weight: 1,100 pounds
HMA: Little Owyhee
(NV0200)
Trainer: James Hotta

Dayton is a very intelligent black gelding that learns very quickly. He has great ground manners and responds well to cues. He is suitable for an experienced rider. He is a quick-moving responsive horse with lots of potential. Dayton was gathered on December 25, 2016.

GT #6874



Freezemark #13626874
Age 6
Sex: Gelding
Height: 15.1 hands
Weight: 1,050 pounds
HMA: Maverick-Medicine
(NV0105)
Trainer: Brandon Jones

GT is a flashy chestnut sorrel with a flaxen mane and tail. He is very responsive and light on the bit. He listens to all his cues and puts full trust in his rider. GT is also good when it comes to loading in a trailer. I know he will ultimately be a good horse. GT was gathered on February 16, 2018.

Jax #5111



Freezemark #14625111

Age 5

Sex: Gelding

Height: 15.3 hands

Weight: 1,050 pounds

HMA: Little Owyhee
(NV0200)

Trainer: Lance Nelson

Jax is a handsome bay gelding with a white star. He is a very gentle natured horse who has been an absolute pleasure to work with. He is good with saddling, easy to bridle, and good about his feet being trimmed. He was gentle after his first saddling; eager to learn and always willing to please you. He trailer loads great and would be a great work or pleasure riding horse. Jax was gathered on December 3, 2016.

Levi #4746



Freezemark #14624746

Age 5

Sex: Gelding

Height: 15.1 hands

Weight: 1,100 pounds

HMA: Little Owyhee
(NV0200)

Trainer: Johnathon Thompson

Levi is a good-looking bay who comes to you when he is called. He is good about his feet and is energetic. He trailer loads and responds to all your cues really well. Levi will turn out to be a worthy horse. He was gathered on December 3, 2016.

Rex #6183



Freezemark #15626183

Age 4

Sex: Gelding

Height: 15.0 hands

Weight: 950 pounds

HMA: Triple B
(NV0417)

Trainer: Flavio Corral

Rex is a good-looking Bay horse. He is very responsive and energetic. He is a quick learner with good groundwork and is great for trail riding. Jax is a tender and gentle horse, which will make his future owner truly happy. He was gathered on February 5, 2018.

Gideon #4689



Freezemark #15624689

Age 4

Sex: Gelding

Height: 15.3 hands

Weight: 1,125 pounds

HMA: Little Owyhee
(NV0200)

Trainer: Mark Twillgear

Gideon is an attractive Bay horse with unique markings. He is a very intelligent horse, learns quickly and responds well to all of his cues. He is ready to be loaded in your trailer so don't miss taking him home today! Gideon was gathered on November 27, 2016.

Johnny #5875



Freezemark #17625875
Age 2
Sex: Johnny (Gelding)
Height: 11.0 hands
Weight: 400 pounds
HMA: Born in Facility (NVF83)
Trainer: Macio Coleman

Johnny is a beautiful burro who is ready to befriend you. Although he has been only halter-broke, he shows signs having a lot of room for growth. Although Johnny was born in the facility in August 2017, his mother was gathered from the Murietta HMA located here in Nevada.

Zippy #5874



Freezemark #17625874
Age 2
Sex: Johnny (Gelding)
Height: 11.0 hands
Weight: 400 pounds
HMA: Born in Facility (NVF83)
Trainer: Macio Coleman

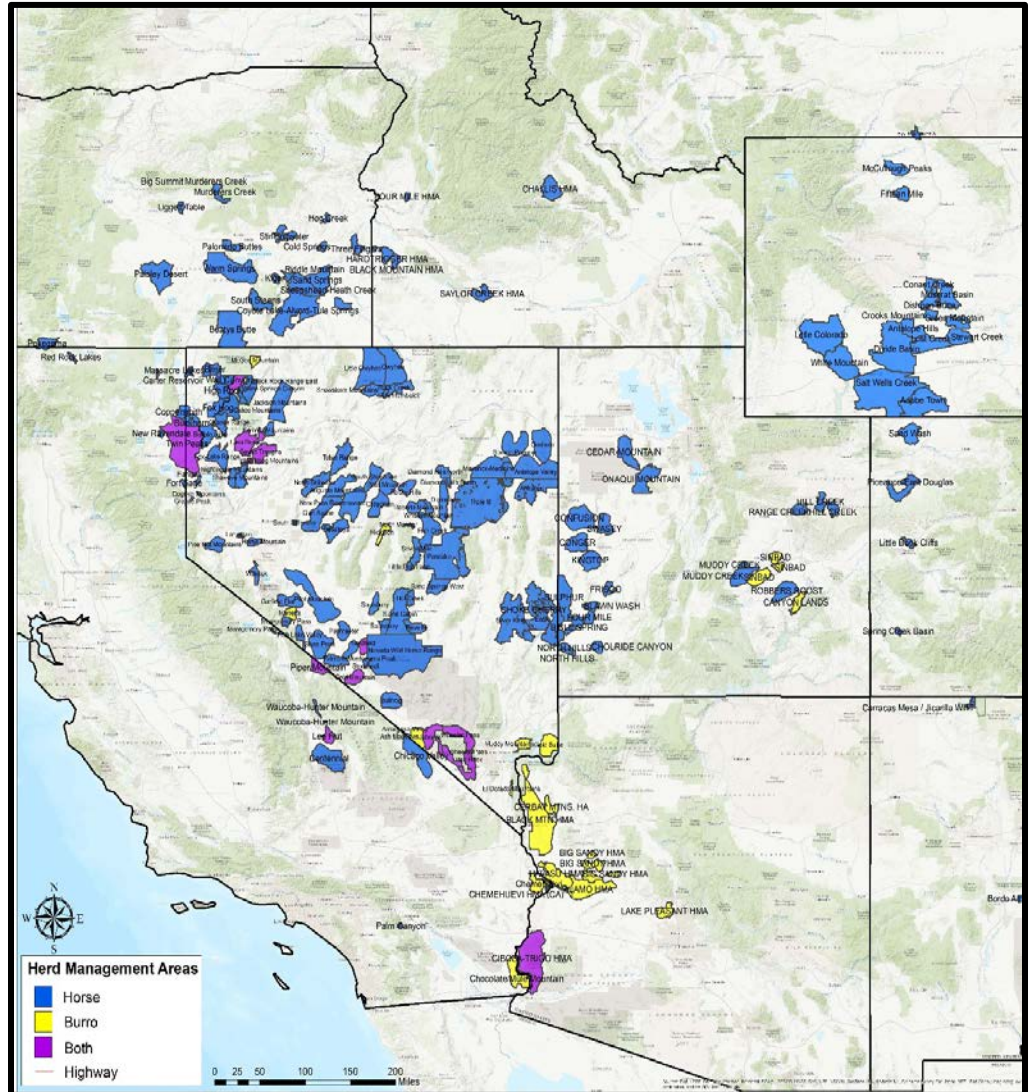
Zippy is a sweet and gentle burro who meets you at the gate. He has been halter-broke and with the eager attitude will turn out to be great addition to your family. Although Zippy was born in the facility in August 2017, his mother was gathered from the Murietta HMA located here in Nevada.

Bureau of Land Management Herd Management Areas

The BLM manages wild horses and burros in 177 herd management areas (HMA) on nearly 26.9 million acres of public land across 10 western states. Each HMA is unique in its terrain features, local climate and natural resources, just as each herd is unique in its history, genetic heritage, coloring and size distribution.

Wild horses and burros are managed as *part* of the BLM's multiple-use mission, with the goal of supporting healthy wild horses and burros on healthy public rangelands. To protect the health of the land and to support healthy horses and burros, the BLM works to achieve in HMAs what is known as the Appropriate Management Level (AML). AML is the point at which wild horse and burro populations are consistent with the land's capacity to support them and other mandated uses of those lands, including protecting ecological processes and habitat for wildlife and livestock. The AML for each HMA ranges from a minimum population level to a maximum population level in order to allow for population growth over a four- to five-year period. The BLM establishes AML through the evaluation and analysis of rangeland resource and population data spanning several years, including data relating to vegetation and soil types, weather and water. The AML for each HMA is set in an open, public process through field office planning efforts.

How wild horses and burros are managed differs from how most other species are managed on public lands. Wildlife species, such as deer, are usually controlled through a combination of hunting and natural predators. Livestock use on public lands is intricately managed and controlled through grazing permits. Because wild horses and burros are protected from hunting, and because of a lack of natural predators, if left unmanaged herds can double in size in just four to five years and quickly outgrow the ability of the land to support them. Maintaining herd size at the appropriate management level is the best way to ensure healthy horses and burros on healthy rangelands. The current nationwide, maximum population level is 26,690 animals. For more information about all the BLM's HMAs, visit the BLM website's herd management areas section at <https://go.usa.gov/xm3p9>.



Frequently Asked Questions (FAQs)

What is prohibited on the grounds and are cameras allowed?

- No tobacco products or cell phones are permitted on the grounds during the event.
- No photography is permitted without Media Credentials or prior approval is granted.

How much training do the animals actually have?

- The animals are “green-broke” which means they have received up to 120+ days of training by the inmates. They will continue to need daily training to reinforce the basics they have learned. Most saddle-started horses will initially need an experienced rider.

Can we preview the animal available for adoption before the adoption date?

- No, since this is a prison facility, the animals cannot be viewed until the morning of the adoption.

What is the average sale price of saddle-started horses trained by prison inmates?

- Prices vary widely. The bids have gone as high as \$15,000. However, the average price is between \$1,500 to \$2,500 per animal. It really depends on how many people are interested in one particular animal.

Do I have to be present to adopt a wild horse or burro? Can I send my friend?

- You must be present to adopt a wild horse or burro. You cannot send a family member or a friend. The person signing the “Private Maintenance and Care Agreement” will be the legal adopter and the only person that can apply for title after a year of proper care.

What are the facility requirements?

- The minimum size corral is 20' x 20' which is also the recommended size until the adopted animal becomes easy to catch. Even though the horses are green broke, they may still startle easily and attempt to jump over the corral; therefore, a minimum corral height of 5' made from heavy duty construction materials using poles, pipes, or planks with at least 1 ½ inch thickness, and without dangerous protrusions, is required. Barbed wire, large-mesh-woven, stranded, and electric materials are unacceptable for fencing.
- Some form of shelter must be available, within the corral area, to mitigate the effects of inclement weather and temperature extremes; examples of acceptable shelter may be of natural cover (tree, etc.) or man-made structure.

Do I have to pick up the animal I adopt the day of the adoption?

- The BLM prefers that you take the horse or burro home the day of the adoption, but special arrangements can be made with the prison to pick up the animal in a couple of days.

What are the BLM's trailer requirements for hauling my animal home?

- The BLM recommends stock type trailers; three-horse slant load trailers are acceptable. Other types of trailers will be evaluated on a case-by-case basis. BLM requires trailers meet the following minimum requirements:
 - a. Covered top, sturdy walls and floors, and a smooth interior, free from any sharp protrusions.
 - b. Ample headroom, adequate ventilation and floors covered with a non-skid material.
 - c. Removable partitions or compartments to separate animals by size and sex, if necessary.
- BLM personnel will inspect the safety of each trailer and reserve the right to refuse loading if the trailer is unacceptable.

Adoption Application, Requirements and Payment Information

To download a BLM adoption application for a wild horse or burro (Form 4710-10), please go to <https://go.usa.gov/xEkhV>.

Adoption Requirements at a Glance

- Must be 18 years old. Parents or guardians may adopt and allow a younger family member to care for the animal.
- Have no prior conviction for inhumane treatment of animals or for violating the Wild Free-Roaming Horse and Burro Act.
- Have adequate feed, water and facilities (at least 400 square feet for each animal) to provide humane care for the number of animals requested.
- Provide a home for the animal in the United States until you receive Certificate of Title from the BLM.

Does BLM accept personal checks? What other types of payment are accepted?

- The BLM accepts personal checks, money orders, American Express, Discover, VISA, MasterCard, travelers' checks, and cash as payment for adoption fees.

Can I get a refund or exchange my adopted horse for another in the future?

- In spite of efforts to provide adopters with healthy animals, situations arise where unrecognized lameness or health problems surface following adoption. Upon request, an adopter may receive a credit for the amount of the original adoption toward the adoption fee for a replacement animal if the following conditions apply:
 - a. Within six months of the original adoption, the adopter provides a signed statement from a veterinarian that the animal died, had to be euthanized, or was diagnosed with an incurable illness or lameness attributable to a condition that already existed at the time of adoption.
 - b. The death, development of the illness, or lameness of the animal must not have been preventable by proper care from the adopter.
 - c. The request for replacement, with the substantiating veterinarian's statement, must be received by the BLM no later than 30 days after the animal's death or diagnosis.
 - d. Adopters shall return live animals to the BLM; should the animal have been euthanized or succumbed, the adopter is responsible for the disposal of the carcass.
- BLM will issue the original adopter an adoption fee voucher with the following stipulations:
 - a. The voucher will be the same amount paid at the time of the original adoption.
 - b. Valid for 1-year from the date issued.
 - c. Redeemable toward the fee to adopt another animal at an upcoming satellite adoption event, Internet adoption, or during a regularly scheduled Northern Nevada Correctional Center adoption.
 - d. The voucher cannot be used at an event sponsored by the Mustang Heritage Foundation (MHF).
 - e. The voucher is only good for one animal.
 - f. If the fee for the replacement animal is more than the original adoption fee, the adopter will be required to pay the balance. If the fee for the replacement animal is less than the original adoption voucher amount, the remaining balance will be forfeited.
 - g. No other refunds or exchanges will be approved.

***The next Saddle-trained Wild Horse Adoption
is scheduled for October 19, 2019***