

Wilderness Inventory Unit Index of Documents  
**West River Breaks OR-034-121, 25 total pages**

Page 1: Index Cover Sheet

[Page 2: Form 1 – Documentation of BLM Wilderness Inventory: Findings on Record](#)

[Page 4: Form 2 – Documentation of Current Wilderness Inventory Conditions](#)

[Page 8: Form 2 – Summary of Findings and Conclusion](#)

[Page 10: Wilderness Characteristics Overview–West River Breaks OR-034-121 Map 1 of 2](#)

[Page 11: Wilderness Characteristics-Land Treatments-West River Breaks OR-034-121 Map 2 of 2](#)

[Page 12: Wilderness Characteristics–BLM Photo Points–West River Breaks Map & Log](#)

[Page 13: OR-034-121 West River Breaks BLM Photos](#)

[Page 15 H-6300-1-Wilderness Inventory Maintenance in BLM Oregon/Washington  
Appendix C – Road\\* Analysis: Unnamed Road](#)

[Page 19: H-6300-1-Wilderness Inventory Maintenance in BLM Oregon/Washington  
Appendix C – Road\\* Analysis: Road 6266-0-00](#)

**Prepared by:**  
**U.S. Department of the Interior**  
**Bureau of Land Management**  
**Vale District Office**  
**100 Oregon Street**  
**Vale, Oregon 97918**



## **H-6300-1-WILDERNESS INVENTORY MAINTENANCE IN BLM OREGON/WASHINGTON**

### **APPENDIX B – INVENTORY AREA EVALUATION**

#### **Evaluation of Current Conditions:**

- 1) Document and review the existing BLM wilderness inventory findings on file, if available, regarding the presence or absence of individual wilderness characteristics, using Form 1, below.
- 2) Consider relevant information regarding current conditions available in the office to identify and describe any changes to the existing information (use interdisciplinary (ID) team knowledge, aerial photographs, field observations, maps, etc.), and document your findings on Form 2, below.

When Citizen Information has been submitted regarding wilderness characteristics, document the submitted materials including: date of Submission; Name of District(s) and Field Office(s) Affected; Type of material Submitted (e.g. narrative, map, and photos). Evaluate any submitted citizen information regarding the validity of proposed boundaries of the unit(s), the existence of roads and other boundary features, the size of the unit(s), and the presence or absence of wilderness characteristics based on relevant information available in the office (prior BLM inventories, ID team knowledge, aerial photographs, field observations, maps, etc.)

Conduct field reviews as necessary to verify information and to ascertain current conditions. Reach conclusions on current conditions including boundaries, size of areas and presence or absence of wilderness characteristics. Fully explain the basis for each conclusion on form 2, including any critical differences between BLM and citizen information.

Document your findings regarding current conditions for each inventoried area. Describe how the present conditions are similar to, or have changed from, the conditions documented in the original wilderness inventory. Document your findings on Form 2 for each inventory area. Cite to or attach data considered, including photographs, maps, GIS layers, field trip notes, project files, *etc.*

**WILDERNESS INVENTORY MAINTENANCE IN BLM OREGON/WASHINGTON  
(Source: Oregon State Office Internal Guidance as of July 2007)**

Year: 2009 Inventory Unit Number/Name: OR-034-121, West River Breaks

**FORM 1: DOCUMENTATION OF BLM WILDERNESS INVENTORY FINDINGS ON RECORD:**

**1. Is there existing BLM wilderness inventory information on all or part of this area?**

No  Yes \_\_\_\_\_ (if more than one unit is within the area, list the names/numbers of those units.):

**a) Inventory Source:** Vale District original wilderness characteristics inventory documents supporting the Northern Resource Area Unit Resource Analysis of the Northern Resource Area Management Framework Plan.

**b) Inventory Unit Name(s)/Number(s):** North Fork Malheur, 3-34

Note: This Wilderness Characteristics Unit was once part of an historical unit which was numbered, OR-03-02-34, and was named North Fork Malheur River. An 8"x11" copied map received from BLM Vale D. O. delineated the unit, but no other inventory information is available. This map is filed in the Wilderness Characteristics Inventory file for the Eagle-Picher Celatom Mine Project with other information received from Vale District Office.

**c) Map Name(s)/Number(s):** Vale District's Northern Resource Area Unit Resource Analysis map.

**d) BLM District(s)/Field Office(s):** Burns District – Three Rivers Resource Area and Vale District-Malheur Resource Area.

**2. BLM Inventory Findings on Record:**

Inventory Source: See above.

Unit#/Name	Size (historic acres)	Natural Condition? Y/N	Outstanding Solitude? Y/N	Outstanding Primitive & Unconfined Recreation? Y/N	Supplemental Values? Y/N
<b>OR-03-02-34, N. Fork Malheur River</b>	<b>13,100</b>	<b>*See comment, next page</b>	<b>*</b>	<b>*</b>	<b>*</b>

\*BLM is presently not aware of, and is unable to find any documentation of these wilderness characteristics criteria for this original inventory unit (if such determinations were made, at all, at that time). A map and document was found which identified the area by name and number, and only the determined acreage of the unit.

## **H-6300-1-WILDERNESS INVENTORY MAINTENANCE IN BLM OREGON/WASHINGTON**

### **APPENDIX B – INVENTORY AREA EVALUATION**

#### **Evaluation of Current Conditions:**

- 1) Document and review the existing BLM wilderness inventory findings on file, if available, regarding the presence or absence of individual wilderness characteristics, using Form 1, below.
- 2) Consider relevant information regarding current conditions available in the office to identify and describe any changes to the existing information (use interdisciplinary (ID) team knowledge, aerial photographs, field observations, maps, etc.), and document your findings on Form 2, below.

When Citizen Information has been submitted regarding wilderness characteristics, document the submitted materials including: date of Submission; Name of District(s) and Field Office(s) Affected; Type of material Submitted (e.g. narrative, map, and photos). Evaluate any submitted citizen information regarding the validity of proposed boundaries of the unit(s), the existence of roads and other boundary features, the size of the unit(s), and the presence or absence of wilderness characteristics based on relevant information available in the office (prior BLM inventories, ID team knowledge, aerial photographs, field observations, maps, etc.)

Conduct field reviews as necessary to verify information and to ascertain current conditions. Reach conclusions on current conditions including boundaries, size of areas and presence or absence of wilderness characteristics. Fully explain the basis for each conclusion on form 2, including any critical differences between BLM and citizen information.

Document your findings regarding current conditions for each inventoried area. Describe how the present conditions are similar to, or have changed from, the conditions documented in the original wilderness inventory. Document your findings on Form 2 for each inventory area. Cite to or attach data considered, including photographs, maps, GIS layers, field trip notes, project files, *etc.*

**FORM 2 - DOCUMENTATION OF CURRENT WILDERNESS INVENTORY  
CONDITIONS**

Unit Number/Name: **OR-034-121, West River Breaks**

**(1) Is the unit of sufficient size?**

Current Unit Acres: **6,265** Yes   X   No \_\_\_\_\_

**Citizen Information Received:** No citizen information for this unit was received.

**ID-team Meetings:** This unit was not evaluated in the I.D.-team meeting held on January 29, 2009. Bob Alward, contracted Wilderness Consultant in Vale District, was contacted in early March, 2009. He coordinated with the Vale District staff to obtain information for wilderness characteristics. Their input was used to complete the Form 2 narrative. West River Breaks is composed of BLM lands managed by Vale and Burns Districts.

**BLM’s Boundary Road Determination Process:** Burns District staff were contacted prior to the ID-team meeting and provided information about current uses of routes by mining personnel, BLM personnel, grazing permittees, and other publics. The Burns District Wilderness Specialist completed a route analysis for one route, the western boundary road of the unit. The Vale District Wilderness Specialist identified four routes which were boundary roads in that district after meeting with Vale District staff. Photographs were taken at points along the west boundary road and at a couple points on an access road branching off this boundary road.

Some of the interior routes not identified as boundary roads may have been mechanically improved or maintained at some point and may be maintained in the future as needed. Most are in a useable condition, but supporting information about regular use was not identified. Therefore, these routes were not recognized as boundary roads. There are no interior, cherry-stemmed boundary roads.

**Boundary changes since 1978:** This is a new unit, so boundaries have changed considerably since the original delineation of the original 13,100-acre North Fork Malheur River Unit. The current, much smaller unit of OR-034-121 is the central portion of the original OR-02-34 unit.

Agency Mountain Unit, OR-034-122, (alias a portion of the “OR-3-4001” in the Vale District wilderness characteristics inventory, and alias “OR-3-4001” in Vale District’s 2006 wilderness characteristics inventory maintenance records) is roughly the southern third of the original unit. The northern third of the unit has been previously dropped. Only the western boundary has not changed, continuing to be BLM Rd 6266-0-OO in the Burns District.

**Current Unit Boundaries:** (See BLM Unit Character Map): Routes forming boundaries have been mechanically maintained, improved in the past and will continue to be maintained as needed to allow vehicle passage for public land users.

The boundaries of West River Breaks Unit are:

- N. boundary: Two segments of BLM road and Private land;  
No Photos
- E. boundary: Small section of CNTY 577 Rd. and Private land;  
No Photos
- S. boundary: BLM road and Private land  
No Photos
- W. boundary: BLM 6266-0-OO Road (N. of Eagle-Picher mining operations);  
ONDA Photos: HJ17, HJ20, HJ23  
BLM Photos: Photo Points AG-8 thru AG-11; XG-1 thru XG-8

**(2) Is the unit in a natural condition?**

Yes   X   No        N/A       

**1978 Unit Description:** Not available.

**Current Condition Description: (See West River Breaks Unit Character Map.)** West River Breaks is located ten miles north of U.S. Highway 20 and four miles west of Beulah Reservoir. It is approximately four miles across at its widest point and about six miles long. Two sections of private land are located in the center of the unit. Juniper, sagebrush, and various grass types are the primary vegetation.

Human imprints are associated with livestock grazing. The unit is within five grazing allotments, Cottonwood Creek and Castle Rock in Burns District and Agency Mountain, Castle Rock and Wilbur in Vale District. A number of pastures or portions of pastures of these allotments are located within the boundaries of the unit: Burnt Basin, South Rockpile and Water Gulch in Burns District, and Water Gulch, Water Gulch Fenced Federal Range (FFR), South Rockpile, East Rockpile and Angus FFR in Vale District. Vale District manages the majority of the grazing use in the unit; only the western edge is within the Burns Cottonwood Creek Allotment.

There are 18.9 miles of fences. One extends along the entire length of the unit's western edge for approximately seven miles. There are also 11.3 miles of unit boundary roads and 2.5 miles of non-boundary routes.

Five livestock reservoirs are in this unit, four within the Burns District (three managed by Vale District) and one in the Vale District. A developed spring is located in extreme southeast corner, and a crested wheat seeding (Beulah Seeding) established in the 1970's in the eastern and southern portions of the unit. Native shrubs and grasses have become reestablished in this displaced seeding and the project is no longer obvious to the casual observer. A prescribed burn was conducted in 1961; it, too, is no longer obvious. Three non-road vehicle routes (Motorized Primitive Trails) are present: .95 miles in Vale District; 2.125 miles in Burns District. Overall, due to the limited number, type, and distribution of developments, the unit appears to be primarily affected by the forces of nature with the work of humans substantially unnoticeable to the average visitor.

**(3) Does the unit have outstanding opportunities for solitude?**Yes \_\_\_\_\_ No  X  N/A \_\_\_\_\_**1978 Unit Description:** Not available.

**Current Condition Description:** The topography is diverse, being high hills and ridges which drop off eastward to Water Gulch which flows northeast to the North Fork of the Malheur River. Numerous other small drainages cut through this country, flowing northeast towards the river. Vegetation provides little screening. This setting allows for some sense of solitude in some locations, but because of the unit's configuration, with narrow extensions of BLM lands and two 640-acre sections of private land through the center of the unit, outstanding opportunities for solitude are precluded.

**(4) Does the unit have outstanding opportunities for primitive and unconfined recreation?**Yes \_\_\_\_\_ No  X  N/A \_\_\_\_\_**1978 Unit Description:** Not available.

**Current Condition Description:** This unit possesses no special or unique values or properties to specifically draw recreationists to the area. The main recreation activities are deer, elk and chukar hunting and some general sightseeing. The diversity and quality of primitive and unconfined recreation are not unlike those which can be found on public lands in the much of eastern Oregon in the Northern Basin and Range. They are not unique and do not present characteristics either individually or collectively that would result in their being outstanding.

**(5) Does the unit have supplemental values?**Yes  X  No \_\_\_\_\_ N/A \_\_\_\_\_**1978 Unit Description:** Not available.

**Current Condition Description:** Bull Trout which is a BLM Special Status Species, is found in the North Fork of the Malheur River above Beulah Reservoir. The unit borders the river for about a half-mile.

Note: The segment of the North Fork of the Malheur River above Beulah Reservoir of this 1988 congressionally designated national study river, as amended under the National Wild and Scenic Rivers Act, has been determined to not be administratively eligible or suitable for designation as a component of the National Wild and Scenic Rivers System. This was stated in the Record of Decision for the 2002 Vale District Southeastern Oregon Resource Management Plan.

**Summary of Findings and Conclusion**

Unit Name and Number: **West River Breaks**

**Summary Results of Analysis:**

- 1. Does the area meet any of the size requirements?  Yes  No
- 2. Does the area appear to be natural?  Yes  No
- 3. Does the area offer outstanding opportunities for solitude or a primitive and unconfined type of recreation?  Yes  No  NA
- 4. Does the area have supplemental values?  Yes  No  NA

**Conclusion (Check One):**

The area-or a portion of the area-has wilderness character.

The area does not have wilderness character.

**Prepared by: David E. Vickstrom, Wilderness Specialist, Burns District and  
Robert L. Alward, Consultant-Wilderness, Vale District**



**Wilderness Characteristics Inventory; OR-034-121, West River Breaks**

**Coordinating Personnel:**

Willie Street 1-20-2010  
Willie Street, Range Specialist, Burns District Date

Bill Andersen 1-20-10  
Bill Andersen, Range Specialist, Burns District Date

Bill Lutjens 2/8/10  
Bill Lutjens, Management Specialist, Vale District Date

Shaney Rockefeller 2/18/10  
Shaney Rockefeller, Soil Scientist, Vale District Date

Dave Vickstrom 1-20-2010  
Dave Vickstrom, Wilderness Specialist, Burns District Date

Bob Alward 2/5/2010  
Bob Alward, Consultant-Wilderness, Vale District Date

**Approved by:**

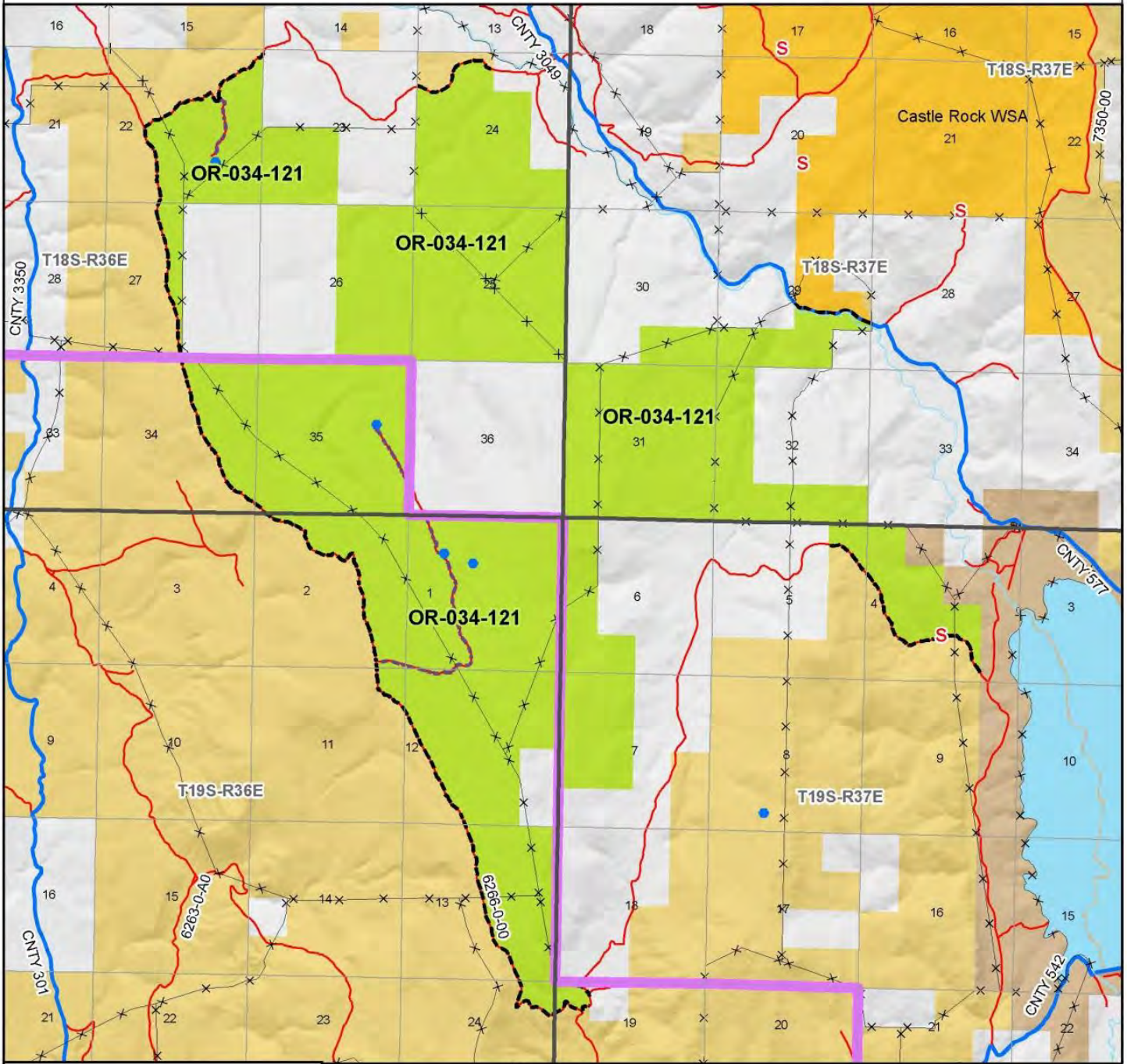
Rick Roy 1/25/10  
Rick Roy, Field Manager, Three Rivers Resource Area, Burns District Date

Pat Ryan 3/8/2010  
Pat Ryan, Field Manager, Malheur Resource Area, Vale District Date

*This form documents information that constitutes an inventory finding on wilderness characteristics. It does not represent a formal land use allocation or a final agency decision subject to administrative remedies under either 43 CFR parts 4 or 1610.5-2.02*

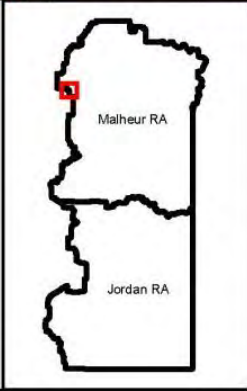
# Wilderness Characteristics - Overview

## West River Breaks - OR-034-121 - Map 1 of 2



**Legend**

Developed Spring	Boundary Road
Wildlife Guzzler	Motorized Primitive Trail (MPT)
Earthen Reservoir	Discontinued Use
Pipeline	County
Trough	Major Highway
Fence	BLM Numbered & Other Routes
Storage Tank	Bureau of Land Management
Surface Mining Disturbance	State
Sage Grouse Lek	Private
Special Status Plant	Other Federal Land
BLM Wild Char Inventory Unit	District Boundary
Wilderness Study Area	
Mineral Material Site	
Mineral Material Site	
Road/Utility Right-of-Way	
Major Water Body	



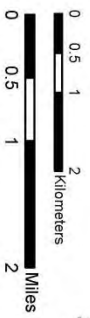
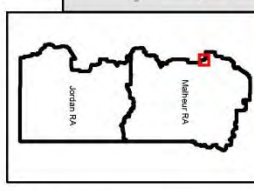
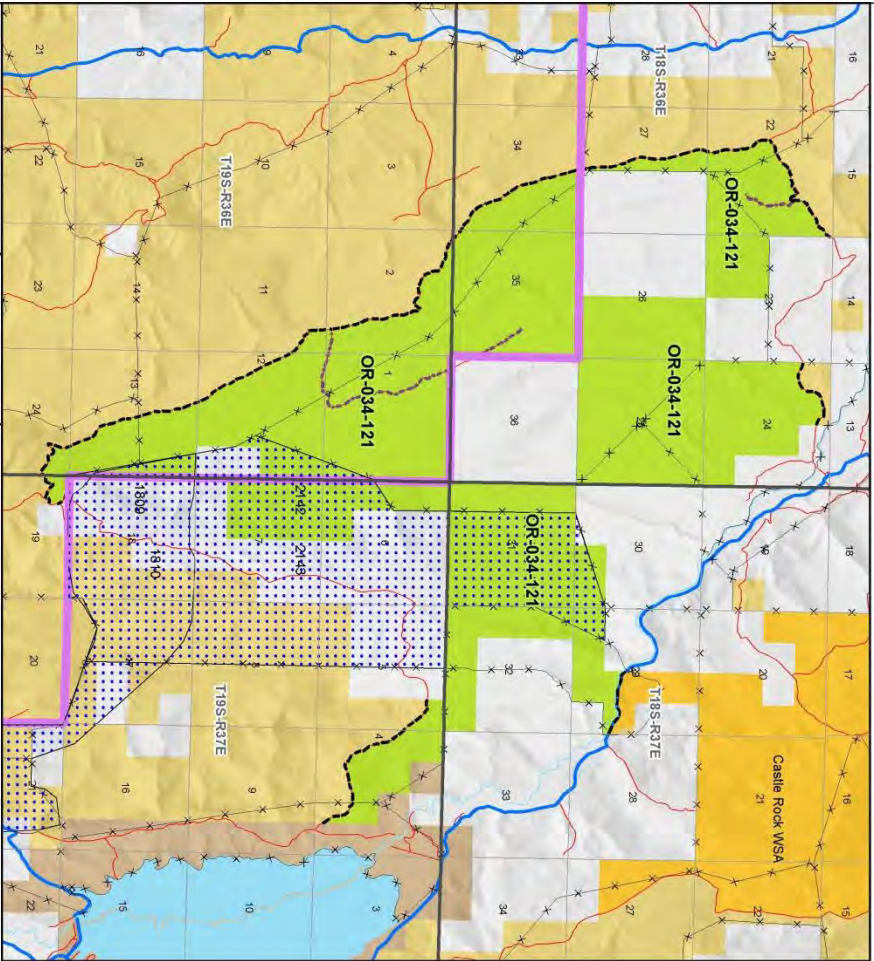
U.S. DEPARTMENT OF THE INTERIOR  
BUREAU OF LAND MANAGEMENT

**VALE DISTRICT**  
January 12, 2010

No warranty is made by the Bureau of Land Management as to the accuracy, reliability, or completeness of these data for individual or aggregate use with other data. Original data were compiled from various sources. This information may not meet National Map Accuracy Standards. This product was developed through digital means and may be updated without notification.

**--FINAL--**

**Wilderness Characteristics - Land Treatments**  
**West River Breaks - OR-034-121 - Map 2 of 2**



U.S. DEPARTMENT OF THE INTERIOR  
 BUREAU OF LAND MANAGEMENT

**WALE DISTRICT**  
 January 12, 2010

1980s to 2010. The Bureau of Land Management  
 and the U.S. Department of the Interior are  
 pleased to publish this report. The information  
 was developed from the original records and  
 maps deposited from the original project files.

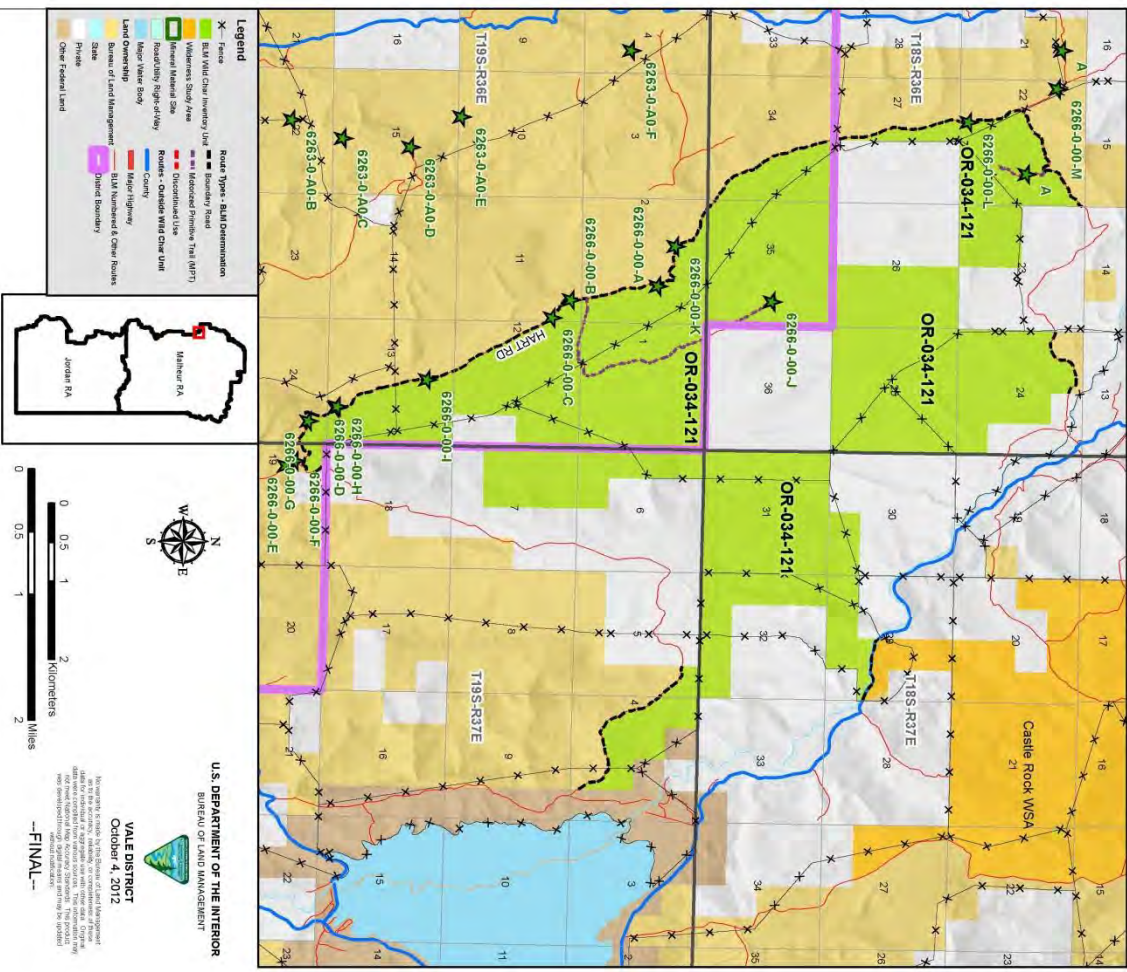
—FINAL—

**Wilderness Characteristics - Land Treatments**  
**West River Breaks - OR-034-121 - Map 2 of 2**

OBJECTID*	NAME	TREATMENT TYPE	SEED GROUP	DATE
1809	BELLAH SEEDING	Prescribed Burn	Not Applicable	1961
1810	BELLAH SEEDING	Drill Seeding	Unknown	1961
2142	BELLAH SEEDING	Plow/Disc	Not Applicable	1970
2143	BELLAH SEEDING	Drill Seeding	Non-native Grasses	1970

Note: The Land Treatments represented by navy blue dots on the map to the left are labeled with the treatments' ObjectIDs listed in the first field of the Land Treatments table shown above. Multiple types of treatments may have been applied to the same area. For example, one treatment area may have been plowed and drill seeded - a record is shown in the table for each type of treatment.

**Wilderness Characteristics - BLM Photo Points**  
**West River Breaks - OR-034-121**



**Wilderness Characteristics - BLM Photo Points**  
**West River Breaks - OR-034-121**

PHOTO LOCATION	DIRECTION	PHOTO TYPE	PHOTO DATE	COMMENTS
6266-0-00-A	SW	ROUTE	1/12/09	Up Side of hill showing cut/ri on a slope. ?
6266-0-00-B	NW	ROUTE	1/12/09	Route 6266-0-00, rd route goes to 2 reservoirs and drift fence. ?
6266-0-00-A	N	ROUTE	1/12/09	Side route of 2 6266-0-00 to level above mt.s. ?
6266-0-00-A	N	ROUTE	1/12/09	Route 6266-0-00
6266-0-00-B	S	ROUTE	1/12/09	Route through Sagebrush Flat.
6266-0-00-B	N	ROUTE	1/12/09	Route up hill toward switchbacks.
6266-0-00-C	S	ROUTE	1/12/09	Cut/ri. ?
6266-0-00-C	N	ROUTE	1/12/09	Cut/ri. large haul der on route past bed of rd e. ?
6266-0-00-D	E	ROUTE	1/12/09	Going down switchbacks. Cut/ri. Rocky berm. ?
6266-0-00-D	NW	ROUTE	1/12/09	Up to top of ridge. End of switchbacks.
6266-0-00-E	W	ROUTE	08/26/09	Berms with big sagebrush. Cut/ri. ?
6266-0-00-E	S	ROUTE	08/26/09	Berms. cut/ri. gravel. ?
6266-0-00-F	N	ROUTE	08/26/09	Cut/ri. berm. ?
6266-0-00-F	N	ROUTE	08/26/09	Cut/ri. ?
6266-0-00-G	NW	ROUTE	08/26/09	Weeds in route. Recent vehicle tracks.
6266-0-00-G	SE	ROUTE	08/26/09	Berms. cut/ri. EP Mn in BG. ?
6266-0-00-H	SE	ROUTE	08/26/09	Rocky berms. Vehicle tracks.
6266-0-00-H	NW	ROUTE	08/26/09	Same as previous photo.
6266-0-00-H	NW	ROUTE	08/26/09	Berms. Natural gravel. Recent vehicle tracks.
6266-0-00-I	N	ROUTE	08/26/09	Rocky berms. Ditch.
6266-0-00-I	S	ROUTE	08/26/09	Rocky berms.
6266-0-00-I	N	ROUTE	08/26/09	Bladed. Rocky berms.
6266-0-00-I	S	ROUTE	08/26/09	Rocky berms.
6266-0-00-K	S	ROUTE	08/26/09	Large rocky berms.
6266-0-00-K	S	ROUTE	08/26/09	No comment.
6266-0-00-K	N	ROUTE	08/26/09	No comment.
6266-0-00-L	N	ROUTE	08/26/09	Low berms.
6266-0-00-L	S	ROUTE	08/26/09	Low berms.
6266-0-00-M	W	ROUTE	08/26/09	Rocky berms.
6266-0-00-M	E	ROUTE	08/26/09	Rocky berms.

Note: The BLM Wild Char Photo Points displayed on the map are labeled with their Photo Locations. The BLM Photo Log table shown above lists the photos taken at their respective Photo Locations. Multiple photos may be taken at each Photo Location. Scenery and Project Photo Type pictures have their photo names provided in the Comments field.



6266-0-00-A-SW.jpg



6266-0-00-D-E.jpg



6266-0-00-H-SE.jpg



6266-0-00-B-N.jpg



6266-0-00-F-N.jpg



6266-0-00-I-N.jpg



6266-0-00-C-S.jpg



6266-0-00-G-NW.jpg



6266-0-00-J-N.jpg



6286-0-00-K-S.jpg



6286-0-00-L-N.jpg

WILDERNESS INVENTORY MAINTENANCE  
ROUTE ANALYSIS

Route Analysis needed to  
Route Analysis Map  
11/29/2009 - Calatom Min  
Project  
⑥ Red #  
⑩ Red  
Vale Dist.

(Factors to consider when determining whether a route is a boundary road for wilderness inventory purposes.)

Evaluator(s): D. Vickstrom Date: 3-4-2009

Original Wilderness Inventory Area Name/Number (UNIT\_ID): N. FK River, 3-34

Route Name and/or Identifier: unnamed - route off N. FK Malheur R. Rd.  
(Include Transportation Plan Identifier, if known, include route number supplied by citizen information when available)

Wilderness Characteristics Inventory  
Eagle-Picher Mine EIS 2009  
Field Map  
No Photo Points

I. LOCATION: refer to attached map Field Map and BLM corporate data (GIS). List photo point references (if applicable): See Attached Photo Log

II. CURRENT PURPOSE OF ROUTE:

Examples: Rangeland/Livestock Improvements (stock tank, developed spring, reservoir, fence, corral), Inholdings (ranch, farmhouse), Mine Site, Concentrated Use Site (camp site), Utilities (transmission line, telephone, pipeline), Administrative (project maintenance, communication site, vegetation treatment).

Describe: Accesses public & pr. lands from N. FK. Malheur R. on the E. & meets BLM Rd 6266-0-00 on W. end. It is the only vehicle access to a large area of public & pr. lands; accesses pasture fence & livestock reservoir,

III. ROAD RIGHT-OF-WAY:

Is a road right-of-way associated with this route? Yes \_\_\_ No \_\_\_ Unknown

IV. CONSTRUCTION

Yes  No \_\_\_

Examples:  
Paved \_\_\_ Bladed  Graveled \_\_\_ Roadside Berms   
Cut/Fill \_\_\_ Other \_\_\_

Describe: Constructed w/ dozer

**V. IMPROVEMENTS**

Yes \_\_\_\_\_ No

By Hand Tools \_\_\_\_\_ By Machine \_\_\_\_\_

Examples:

Culverts \_\_\_\_\_ Stream Crossings \_\_\_\_\_ Bridges \_\_\_\_\_ Gates \_\_\_\_\_  
Cattleguards \_\_\_\_\_ Drainage \_\_\_\_\_ Barriers \_\_\_\_\_ Other \_\_\_\_\_

Describe: \_\_\_\_\_

**VI. MAINTENANCE:**

A. Is there Evidence or Documentation of Maintenance using hand tools or machinery?

Yes \_\_\_\_\_ No

Hand Tools    (Y/N) \_\_\_\_\_ Machine    (Y/N) \_\_\_\_\_

Explain: \_\_\_\_\_

B. If the route is in good condition, but there is no evidence of maintenance, would mechanical maintenance with hand tools or machines be approved by BLM in the event this route became impassable?

Yes  No \_\_\_\_\_

Comments: Route is only access to a large area of BLM & pr. lands & to maintain a pasture fence & reservoir.

**VII. REGULAR AND CONTINUOUS USE:**

Yes  No \_\_\_\_\_

Describe evidence (vehicle tracks observed) and other rationale for whether use has occurred or will continue to occur on a relatively regular basis. Route will continue to be used by grazing permittee, BLM personnel & other public land users.

**VIII. CONCLUSION:**

To meet the definition of a road, items IV or V, and VI-A or B, and VII must be checked yes.

Road: Yes  No \_\_\_\_\_

Explanation: Route will be maintained as necessary. It will continue to be used as described & meets the criteria of a road.



**Photo Log**

Note: Route numbered 6 on Route Analysis Wilderness Inventory Update Map Eagle-Pickler Celestow Mine Project, 2009; on File Burns/Vale BLM Office

Route Name or Number: unnamed route

Date: 06-30-2009

Photographer(s): D. Vickstrom

Vale BLM Dist.: W. River Breaks Unit

Point #	Location (UTMs) Projection: 11 NAD 27		Photo #	Camera Direction	Description
XG-11	0397960	4871531	34	Waypoint #	Route: Document presence or absence of construction, maintenance, improvements and use Unit: Include original unit number and document current landscape character and naturalness
			35	NW	Constructed road; no longer maintained; extremely rough & rocky; no longer used
			36	E	Same as Photo 34.

# Photo Log

Route goes to large block of pr. land in Water Gulch; did not analyze.

Route Name or Number: Water Gulch Rd / no number Date: 06-30-2009  
 Photographer(s): D. Vikstrom

Vale BLM Dist.

Point #	Location (UTMs) <small>Projection: 11 NAD 27</small>	Photo #	Camera Direction	Description <small>Route: Document presence or absence of construction, maintenance, improvements and use Unit: Include original unit number and document current landscape character and naturalness</small>
XG-1	0401781 4862062	1	Waypoint #	
		3	N	Int. - Constructed road w/ berms, cuts/fills, rocky, gravelly surface; not recently maintained.

WILDERNESS INVENTORY MAINTENANCE  
ROUTE ANALYSIS

Route No. Keyed -  
Route Analysis Map  
1/29/2009 - Celatom Mini  
Project  
④

(Factors to consider when determining whether a route is a boundary road for wilderness inventory purposes.)

Evaluator(s): D. Vickstrom Date: 1-12-2009 <sup>6-30-2009</sup>

Original Wilderness Inventory Area Name/Number (UNIT\_ID): Rocky Basin, 2-17 (Burns Di  
Agency Mtn 3-34 (Vale Dist.)

Route Name and/or Identifier: Road 6266-0-00 (from CNTY 542 Rd NW past Kelly Field Mine  
(Include Transportation Plan Identifier, if known, include route number supplied by  
citizen information when available) <sup>W. River Breaks (Vale Dist.)</sup>

Wilderness Characteristics Inventory  
Eagle-Picher Mine EIS 2009

- I. LOCATION: refer to attached map Field Map and BLM corporate data (GIS). List photo point references (if applicable):  
BLM Photo Pts.: AG-8, 9, 10, 11 (winter photos showing route condition);  
XG-1, photo 2; XG-2, photos 6, 7; XG-3, photos 9, 10; XG-4, photos 12, 13, 14;
- II. CURRENT PURPOSE OF ROUTE: XG-5, photos 16, 17; XG-6, photos 19, 20;  
XG-7, photos 23, 23, 24; XG-8, photos 26, 27

Examples: Rangeland/Livestock Improvements (stock tank, developed spring, reservoir, fence, corral), Inholdings (ranch, farmhouse), Mine Site, Concentrated Use Site (camp site), Utilities (transmission line, telephone, pipeline), Administrative (project maintenance, communication site, vegetation treatment).

Describe: Accesses spring development (Box Spring), Kelly Field Mine, reservoirs, fences, pr. lands and enters Malheur Nat'l Forest to the N; used as livestock trail, hunter access, pr. land access.

III. ROAD RIGHT-OF-WAY:

Is a road right-of-way associated with this route? Yes \_\_\_ No \_\_\_ Unknown

IV. CONSTRUCTION

Yes  No \_\_\_

Examples:

Paved \_\_\_ Bladed  Graveled \_\_\_ Roadside Berms   
Cut/Fill \_\_\_ Other \_\_\_

Describe: Route constructed through foothills & rocky, high plateau country to forest.

<u>ONDA Photo Points</u>	<u>ONDA Route Names</u>	<u>BLM Personnel Consulted</u>
<u>H5-17, H5-20, H5-23,</u> <u>Photos taken 7-2005</u>	<u>217E</u>	<u>Willie Street, Range Spec.</u> <u>Bill Andersen, Range Spec.</u> <u>Terri Gasker, Geologist</u>
<u>ONDA PWSA</u> <u>Cottonwood</u>		

V. IMPROVEMENTS

Yes \_\_\_\_\_ No

By Hand Tools \_\_\_\_\_ By Machine \_\_\_\_\_

Examples:

Culverts \_\_\_\_\_ Stream Crossings \_\_\_\_\_ Bridges \_\_\_\_\_ Gates \_\_\_\_\_  
Cattleguards \_\_\_\_\_ Drainage \_\_\_\_\_ Barriers \_\_\_\_\_ Other \_\_\_\_\_

Describe: \_\_\_\_\_

VI. MAINTENANCE:

A. Is there Evidence or Documentation of Maintenance using hand tools or machinery?

Yes  No \_\_\_\_\_

Hand Tools (Y/N) \_\_\_\_\_ Machine  (Y/N) \_\_\_\_\_

Explain: Route from CNTY 542 Rd has been maintained by Eagle - Picher Mine to Kelly Field Mine area.

B. If the route is in good condition, but there is no evidence of maintenance, would mechanical maintenance with hand tools or machines be approved by BLM in the event this route became impassable?

Yes  No \_\_\_\_\_

Comments: Route accesses Kelly Field Mine & a very large area of public & pr. lands & numerous range/livestock improvements (extensive fencing & 4 waterholes); also trend plots salting/mineral sites, pr. lands. Not regularly maintained above switchbacks, but would be to maintain reservoirs & fences.

VII. REGULAR AND CONTINUOUS USE:

Yes  No \_\_\_\_\_

Describe evidence (vehicle tracks observed) and other rationale for whether use has occurred or will continue to occur on a relatively regular basis: Active mine access; route used seasonally to place salt/mineral blocks, check water sources & manage livestock. Route used by hunters in fall & by BLM personnel to monitor range plots, range conditions & livestock use. Vehicle tracks observed on 6-30-2000.

VIII. CONCLUSION:

To meet the definition of a road, items IV or V, and VI-A or B, and VII must be checked yes.

Road: Yes  No \_\_\_\_\_

Explanation: Route meets the criteria of a road & will continue to be used by mining personnel, grazing permittees & other public land users as described.

# Photo Log

Route Name or Number: 6266-0-00  
 Photographer(s): D. Dickerson

Date: 1-12-2009

Point #	Location (UTMs)		Photo #	Camera Direction	Description
	Projection: 11 NAD 27 11T				
AG-8	6399395	4866813	21	W.P.	
			22	SW	up sidehill showing cuts/fills on slope
			23	NW	Road 6266-0-00, Jct. @ side rd. on rt. to
			24	N	2 reservoirs & drift fence to NE.
			25	S	Side rd. off Rd. 6266-0-00 to above developments.
			26	NE	Road 6266-0-00
AG-9	0399623	4865704	27	W.P.	Castle Rock - scenic
			28	N	Route through Sagebrush Flat
			29	S	Route up hill toward Switch-Backs
AG-10	0399686	4865377	30	W.P.	

# Photo Log

Route Name or Number: 6266-0-00  
 Photographer(s): D. Vekstrom

Date: 1-12-2009

Point #	Location (UTMs) <small>Projection: 11 NAD 27</small>	Photo #	Camera Direction	Description <small>Route: Document presence or absence of construction, maintenance, improvements and use Unit: Include original unit number and document current landscape character and naturalness</small>
AG-10	continued from 1st pg.	31	S	Cut/Fill; uphill
		32	N	Cut/Fill; Large boulder on rt. berm - pushed off road.
AG-11	0400955 4862699	33	w.p.	
		34	E	Down switchbacks; cuts/fills; rock berms
		35	SE	" " ; E-P Mine in B.G.
		36	NW	Up to top of ridge; end of switchbacks

# Photo Log

Route Name or Number: BLM 6266-0-00  
 Photographer(s): D. Vickstrom

Date: 06-30-2009

Point #	Location (UTMs) <small>Projection: 11 NAD 27</small>	Photo #	Camera Direction	Description
XG-1	0401781	1	Waypoint #	evidence of recent vehicle tracks
		2	W	Set - uphill; rocky surface; constructed, berms w/ Big Sagebrush; cuts/fills; not recently maintained
		4	S	Constructed road w/ berms; Cuts/fills; rocky, gravelly surface; not recently maintained
XG-2	0401589	5	Waypoint #	
		6	N	At turn in Rd; cut/fill; Berms; not recently maintained; downhill; rocky surface
		7	S	Uphill; cut/fill; same as photo 6; constructed
XG-3	0401124	8	Waypoint #	
		9	SE	Downhill; cuts/fills; E-P Mine in BG; constructed road, berms; rocky surface; not recently maintained
		10	NW	Same as photo 9; uphill; weeds growing on road surface; evidence of recent vehicle tracks

Photo Log

Route Name or Number: BLM 6266-0-00  
 Photographer(s): D. Vikstrom

Date: 06-30-2009

Point #	Location (UTMs) Projection: 11 NAD 27 11 T	Photo #	Camera Direction	Description
XG-4	0400941 4862707	11	Waypoint #	Route: Document presence or absence of construction, maintenance, improvements and use Unit: Include original unit number and document current landscape character and naturalness
		12	SE	Down hill; constructed road; rocky surface; not recently maintained; rocky berms; evident vehicle tracks uphill; same as photo 11.
		13	N/W	
		14	NW?	On flat; constructed road; Big Sagebrush on berms; natural gravels; evidence of recent vehicle use
XG-5	0400595 4863864	15	Waypoint #	
		16	N	Constructed road; rocky berms are evident, ditched on rt. edge of road in photo.
		17	S	Constructed road; rocky berms evident, particularly on rt. edge of road in photo.
		18	Waypoint #	Constructed road through head of small canyon
XG-6	0399642 4868415	19	N	Constructed road; berms; rocky berms
		20	S	Constructed road; rocky surface across head of canyon; rocky berms evident.



Photo Log

Route Name or Number: BLM 6266-0-00 Date: 06-30-2009  
 Photographer(s): D. Vickstrom

Point #	Location (UTMs) Projection: 11 NAD 27	Photo #	Camera Direction	Description
XG-7	0398886 4867042	21	waypoint #	Route: Document presence or absence of construction, maintenance, improvements and use Unit: Include original unit number and document current landscape character and naturalness
		22	S	constructed road on boulder-covered flat; large rock berms on both sides of road;
		23	S	Not recently maintained; same as photo 21
		24	N.	Same as photo 21
XG-8	0397346 4870793	25	waypoint #	
		26	N	Constructed road; low berms; dirt surface; lack of woods on road through junipers
		27	S	Same as photo 26
XG-9	0396594 4871821	28	waypoint #	Route goes W. down into Cottonwood Canyon on Pr. land.
		29	W	Constructed road; rock berms; not maintained
		30	E	Same as photo 28 Vale Dist. should check E-W Fence location