



U.S. Department of the Interior
Bureau of Land Management

Fuels Management

Fact Sheet—West Desert District

The BLM in Utah is divided into five fire zones, with the West Desert Fire and Aviation Program being the largest and most complex organization in the state. The program is challenged not only by 7.7 million acres of public land to protect, but also by the growing wildland urban interface that poses a threat to both the communities and nearby public lands. This year, the program is undertaking its largest fuels management effort in recent history, with the goal of 48,000 acres treated in Fiscal Year 2018.

Fuels Management Quick Facts

- The Hazardous Fuels Reduction (HFR) programs within the Department of the Interior (DOI) works to reduce hazardous fuels (HF) and risks to human communities and improve land health by creating fire-resilient landscapes and restoring fire-adapted ecosystems.
- All HFR treatment projects comply with National Environmental Policy Act (NEPA) and all other regulatory requirements.
- All HFR projects are monitored to determine if treatment objectives were met and to document weather, fire behavior, fuels information, and smoke dispersion.
- The program's goal is to create resilient landscapes.
- The Watershed Restoration Initiative is a cooperative project that focuses on hazardous fuel reduction.
- Reducing fire's impact on Sage-grouse and 350 species.

West Desert District Fuels Management Projects for Fiscal Year 2018

Tooele County

Erickson Pass Bullhog Phase 1

Focus: Restoration of sagebrush to improve Greater Sage-grouse.

Acreage: 1,079

Timeframe: October 2017 - March 2018

South Willow Bullhog

Focus: A partnership with Stansbury Mountain Catastrophic Fire Interagency Workgroup including private landowners, Tooele County, NRCS, BLM, US Forest Service and Utah DNR. The project is to reduce the potential for catastrophic wildfire along the east bench of the Stansbury Mountains.

Acreage: 532

Timeframe: October 2017 - March 2018

Stockton WUI

Focus: Reducing hazardous fuels in the Wildland Urban Interface (WUI) through cutting followed by prescribed fire.

Acreage: 55

Timeframe: Ongoing; Began 2015, will continue through 2018.

Pine Canyon, Lincoln Lakepoint

Focus: Reducing hazardous fuels within the WUI through mowing, herbicide and disking.

Acreage: 600

Timeframe: Ongoing; Began in 2009, will continue through 2018.

Box Elder County**Warm Spring Hills Bullhog Phase 1**

Focus: Restoration of sagebrush habitat.

Acreage: 1,487

Timeframe: November 2016-March 2017. Completed this past spring but will continue follow-up work in fall 2017 to improve range conditions.

Warm Spring Hills Bullhog Phase 2

Focus: Restoration of sagebrush habitat.

Acreage: 4,320

Timeframe: October 2017 - March 2018

Dry Basin Greenstrip (Harrow, spray, seed)

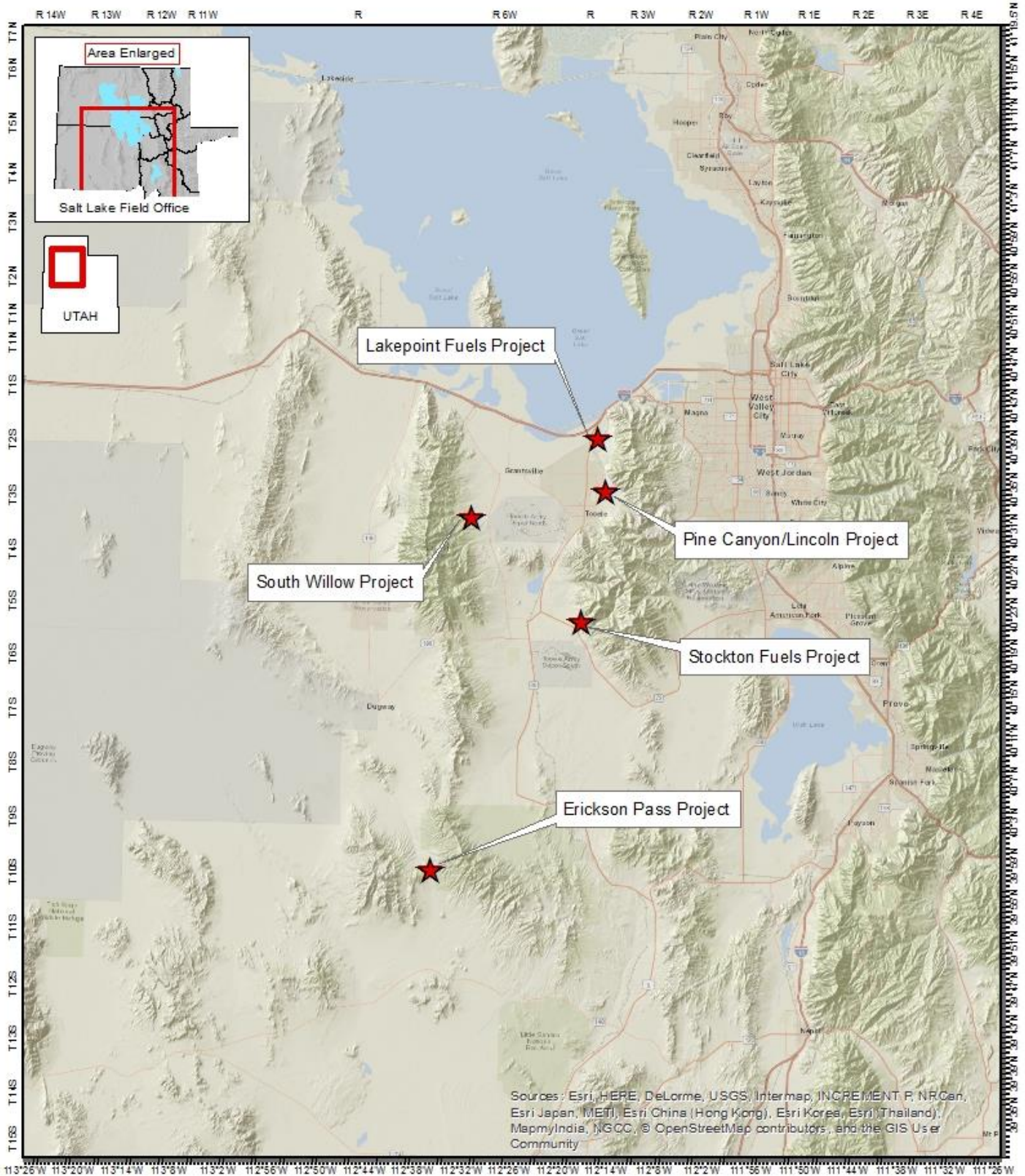
Focus: Through a federal, state and private landowner relationship a fuel break was completed to protect sagebrush habitat.

Acreage: 125 (BLM), 91 (Private)

Length: 13 Miles

Timeframe: April - November 2016. Completed last fall, follow-up work may be included.

For additional information, please contact Paul Corrigan at (801) 977-4300.



Tooele County Fuels Management Project Areas

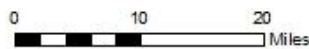
Map Created Oct 12, 2017

U.S. DEPARTMENT OF THE INTERIOR
BUREAU OF LAND MANAGEMENT
SALT LAKE FIELD OFFICE

No warranty is made by the Bureau of Land Management as to the accuracy, reliability, or completeness of these data for individual use or aggregate use with other data.



1:865,638
(when plotted at 8.5" x 11")

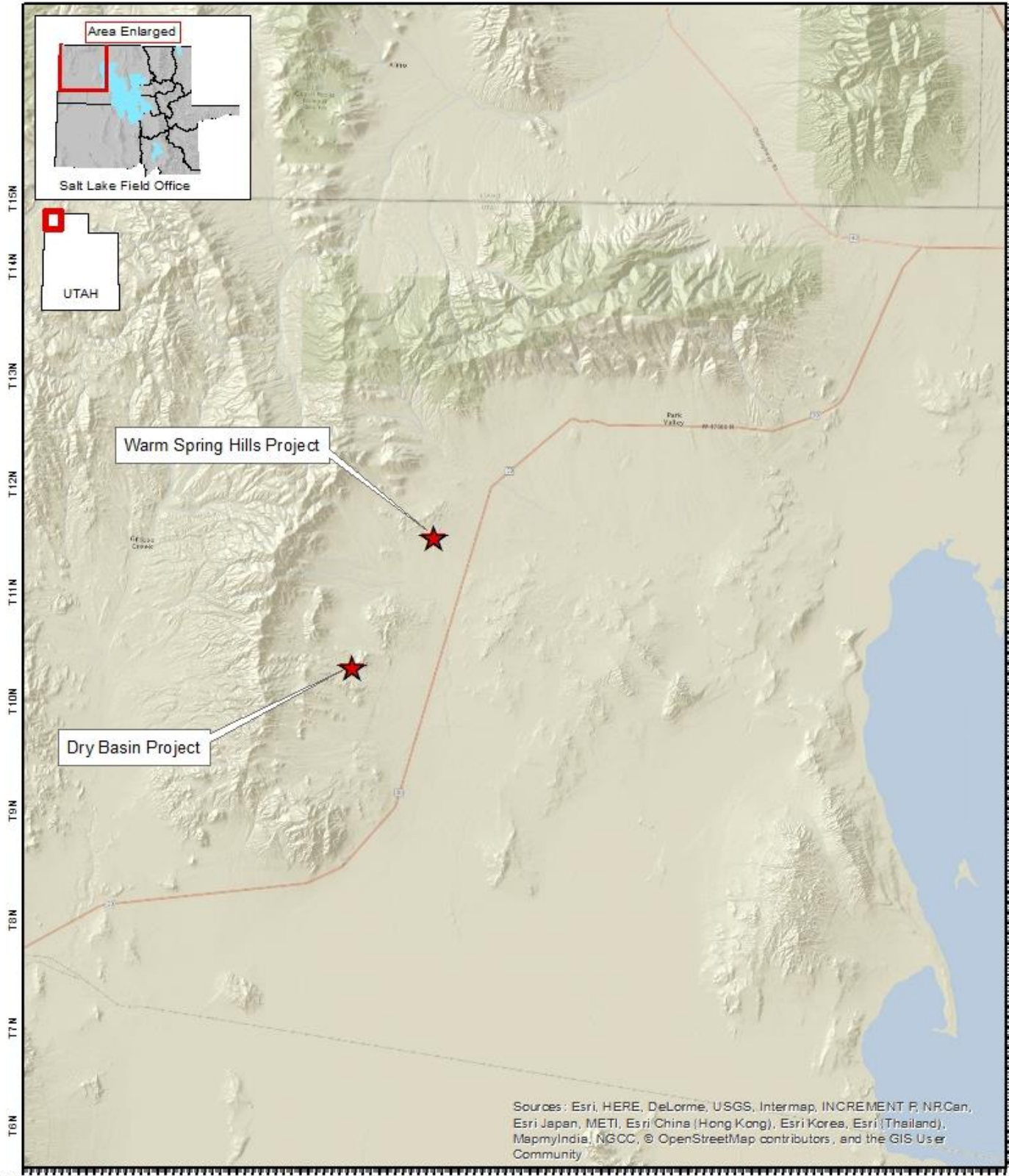


**WEST DESERT BLM
FUELS MANAGEMENT**



T:\UT\GISData\ut\proj\cts\Fire\MT_Ed\MetaMap\Fuels\Projects\SL_FO_Fuels\gmt\Projects_2017_2018.mxd

Updated October 2017 | West Desert District | (801)-977-4300

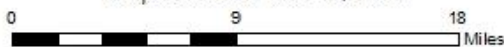


Box Elder County Fuels Management Project Areas

Map Created Oct 12, 2017

U.S. DEPARTMENT OF THE INTERIOR
BUREAU OF LAND MANAGEMENT
SALT LAKE FIELD OFFICE

No warranty is made by the Bureau of Land Management as to the accuracy, reliability, or completeness of these data for individual use or aggregate use with other data.



1:432,819
(when plotted at 8.5" x 11")

**WEST DESERT BLM
FUELS MANAGEMENT**



T:\UTG\GISData\utslip\projects\Fire\IMT_Ed\Media\Map\slFuelsProjects\SL_FO_FuelsMgmtProjects_2017_2018.mxd