

Wilderness Inventory Unit Index of Documents  
**Vines Hill OR-034-048, 10 total pages**

Page 1: Index Cover Sheet

[Page 2: Form 1 – Documentation of BLM Wilderness Inventory: Findings on Record](#)

[Page 5: Form 2 – Documentation of Current Wilderness Inventory Conditions](#)

[Page 8: Form 2 – Summary of Findings and Conclusion](#)

[Page 9: Wilderness Characteristics Overview – Vines Hill OR-034-045 Map 1 of 2](#)

[Page 10: Wilderness Characteristics-Land Treatments-Vines Hill OR-034-045 Map 2 of 2](#)

**Prepared by:**  
**U.S. Department of the Interior**  
**Bureau of Land Management**  
**Vale District Office**  
**100 Oregon Street**  
**Vale, Oregon 97918**



## **H-6300-1-WILDERNESS INVENTORY MAINTENANCE IN BLM OREGON/WASHINGTON**

### **APPENDIX B – INVENTORY AREA EVALUATION**

#### **Evaluation of Current Conditions:**

- 1) Document and review the existing BLM wilderness inventory findings on file, if available, regarding the presence or absence of individual wilderness characteristics, using Form 1, below.
- 2) Consider relevant information regarding current conditions available in the office to identify and describe any changes to the existing information (use interdisciplinary (ID) team knowledge, aerial photographs, field observations, maps, etc.), and document your findings on Form 2, below.

When Citizen Information has been submitted regarding wilderness characteristics, document the submitted materials including: date of Submission; Name of District(s) and Field Office(s) Affected; Type of material Submitted (e.g. narrative, map, photo). Evaluate any submitted citizen information regarding the validity of proposed boundaries of the unit(s), the existence of roads and other boundary features, the size of the unit(s), and the presence or absence of wilderness characteristics based on relevant information available in the office (prior BLM inventories, ID team knowledge, aerial photographs, field observations, maps, etc.)

Conduct field reviews as necessary to verify information and to ascertain current conditions. Reach conclusions on current conditions including boundaries, size of areas and presence or absence of wilderness characteristics. Fully explain the basis for each conclusion on form 2, including any critical differences between BLM and citizen information.

Document your findings regarding current conditions for each inventoried area. Describe how the present conditions are similar to, or have changed from, the conditions documented in the original wilderness inventory. Document your findings on Form 2 for each inventory area. Cite to or attach data considered, including photographs, maps, GIS layers, field trip notes, project files, *etc.*

**Year:** 2008      **Unit Number/Name:** OR-034-048 --- Vines Hill

**FORM 1 -- DOCUMENTATION OF BLM WILDERNESS INVENTORY  
FINDINGS ON RECORD**

**1. Is there existing BLM wilderness inventory information on all or part of this area?**

Yes  No  (If yes, and if more than one unit is within the area, list the names of those units.):

**A.) Inventory Source(s) -- (X)** Denotes all applicable BLM Inventory files, printed maps, or published BLM Decision documents with information pertaining to this unit.

**Wilderness Inventories**

- (X) 1978 – 1980 --- BLM Wilderness Inventory Units OR-03-04-41, Vines Hill 3-64 (unpublished BLM documents in case files)
- (X) April 1979 – *Wilderness -- Proposed Initial Inventory – Roadless Areas and Islands Which Clearly Do Not have Wilderness Characteristics, Oregon and Washington*

**Wilderness Decision Documents**

- (X) August 1979 – *Wilderness Review – Initial Inventory, Final Decision on Public Lands Obviously Lacking Wilderness Characteristics and Announcement of Public Lands to be Intensively Inventoried for Wilderness Characteristics, Oregon and Washington* (green document)
- ( ) October 1979 – *Wilderness Review – Intensive Inventory - Oregon, Proposed Decision on the Intensive Wilderness Inventory of Selected Areas* (grey document).
- ( ) March 1980 – *Wilderness Review – Intensive Inventory; Final Decisions on 30 Selected Units in Southeast Oregon and Proposed Decisions on Other Intensively Inventoried Units in Oregon and Washington* (orange document)
- ( ) November 1980 - *Wilderness Inventory – Oregon and Washington, Final Intensive Inventory Decisions* (brown document)
- ( ) November 1981 *Stateline Intensive Wilderness Inventory Final Decision, Oregon, Idaho, Nevada, Utah* (tan document).

**B.) Inventory Unit Name(s)/Number(s)**

BLM OR-03-04-41, Vines Hill 3-64

**C.) Map Name(s)/Number(s)**

- Final Decision – Initial Wilderness Inventory Map, August 1979, Oregon
- Proposed Decision -- Intensive Wilderness Inventory of Selected Areas Map, October 1979, Oregon
- Intensive Wilderness Inventory Map, March 1980, Oregon
- Intensive Wilderness Inventory --Final Decisions Map, November 1980, Oregon.
- November, 1981 *Stateline Intensive Wilderness Inventory Final Decision, Oregon, Idaho, Nevada, Utah* (tan document).

**D.) BLM District(s)/Field Office(s)**

Vale District Office/ Malheur Field Office

**2. BLM Inventory Findings on Record**

(Existing inventory information regarding wilderness characteristics (if more than one BLM inventory unit is associated with the area, list each unit and answer each question individually for each inventory unit):

**Inventory Source:** See above.

<b>Unit#/ Name</b>	<b>Size (historic acres)</b>	<b>Natural Condition? Y/N</b>	<b>Outstanding Solitude? Y/N</b>	<b>Outstanding Primitive &amp; Unconfined Recreation? Y/N</b>	<b>Supplemental Values? Y/N</b>
(3-64) OR-03-04-41 Vines Hill	5,740	N	*	*	*
<b>TOTAL</b>	5,740				

\*--These criteria were not specifically addressed in the inventory of this unit.

## **H-6300-1-WILDERNESS INVENTORY MAINTENANCE IN BLM OREGON/WASHINGTON**

### **APPENDIX B – INVENTORY AREA EVALUATION**

#### **Evaluation of Current Conditions:**

- 1) Document and review the existing BLM wilderness inventory findings on file, if available, regarding the presence or absence of individual wilderness characteristics, using Form 1, below.
- 2) Consider relevant information regarding current conditions available in the office to identify and describe any changes to the existing information (use interdisciplinary (ID) team knowledge, aerial photographs, field observations, maps, etc.), and document your findings on Form 2, below.

When Citizen Information has been submitted regarding wilderness characteristics, document the submitted materials including: date of Submission; Name of District(s) and Field Office(s) Affected; Type of material Submitted (e.g. narrative, map, photo). Evaluate any submitted citizen information regarding the validity of proposed boundaries of the unit(s), the existence of roads and other boundary features, the size of the unit(s), and the presence or absence of wilderness characteristics based on relevant information available in the office (prior BLM inventories, ID team knowledge, aerial photographs, field observations, maps, etc.)

Conduct field reviews as necessary to verify information and to ascertain current conditions. Reach conclusions on current conditions including boundaries, size of areas and presence or absence of wilderness characteristics. Fully explain the basis for each conclusion on form 2, including any critical differences between BLM and citizen information.

Document your findings regarding current conditions for each inventoried area. Describe how the present conditions are similar to, or have changed from, the conditions documented in the original wilderness inventory. Document your findings on Form 2 for each inventory area. Cite to or attach data considered, including photographs, maps, GIS layers, field trip notes, project files, *etc.*

## **FORM 2 -- DOCUMENTATION OF CURRENT WILDERNESS INVENTORY CONDITIONS**

**Unit Number/Name:** OR-034-048 --- Vines Hill

**Description of Current Conditions:** [Include land ownership, location, topography, vegetation features and summary of major human uses/activities.]

### **1. Is the unit of sufficient size?**

Yes   X   No       

**Description:** Refer to this document's associated Map 1 for the inventory unit's location. The boundary of the 6,697 acre unit is nearly the same as the inventory unit identified in the late 1970's. The unit is bounded on its north by private land, its northwest by utility corridor, west and southeast by BLM road 7326-0-100, south by BLM road 7321-0-0A0, and on its west by BLM road 7321-0-00 and private land. A one mile cherry-stemmed road and its terminus Eagle Pitcher mining-associated stockpile/storage site are excluded from the unit. The BLM natural-surfaced roads are in reasonably good passable condition when not water saturated, receiving a measure of mechanical maintenance as needed to keep them passable for relatively regular and continuous use.

### **2. Is the unit in a natural condition?**

Yes        No   X   N/A       

**Description:** The unit is characterized by scattered hills and their associated slopes and small drainages which collectively flow in varying directions to the unit's boundaries. Most slopes are moderate in gradient, with very little flat surface areas of any extent within the unit. The overall appearance of the unit is of rolling hills. Elevations range from approximately 2,470 to 3,050 feet. Vegetation consists predominately of crested wheatgrass, other non-native grasses and sagebrush.

Refer to this document's associated Maps 1 and 2 for an overview of human imprints in the unit. They include approximately 10.8 miles of rangeland fence, one earthen reservoir, a water well pad for a tank, about a quarter mile of power poles of an old electric line, a 5-mile buried pipeline to 6 surface troughs, and approximately 8.8 miles of 7 motorized primitive trails which are located in numerous reaches of the unit. There are also three nearly indistinguishable abandoned motorized vehicle route segments totaling about one mile within the unit. Eleven different vegetation treatments have affected various portions of the unit between 1964 and 2005. To the average visitor, the drill rows in large areas of pre-1978 drill-planted crested wheatgrass remain substantially apparent. Presently, there remains some visual evidence to the average visitor of the furrowing associated with three 2005 post-wildfire drill-seeded areas (845 acres non-native grasses,

145 acres of an unknown composition). With the extent of visual evidence still apparent by the actions of past vegetation treatment projects, the unit does not appear to be affected primarily by the forces of nature with the imprint of humans being substantially unnoticeable to the average visitor.

**3. Does the unit have outstanding opportunities for solitude?**

Yes \_\_\_\_\_ No \_\_\_\_\_ N/A  X

**Description:**

**4. Does the unit have outstanding opportunities for primitive and unconfined recreation?**

Yes \_\_\_\_\_ No \_\_\_\_\_ N/A  X

**Description:**

**5. Does the unit have supplemental values?**

Yes \_\_\_\_\_ No \_\_\_\_\_ N/A  X

**Description:**

**Summary of Findings and Conclusion**

**Unit Name and Number:** OR-034-048 --- Vines Hill

**Summary Results of Analysis:**

1. Does the area meet any of the size requirements?  Yes  No
2. Does the area appear to be natural?  Yes  No
3. Does the area offer outstanding opportunities for solitude or a primitive and unconfined type of recreation?  Yes  No  NA
4. Does the area have supplemental values?  Yes  No  NA

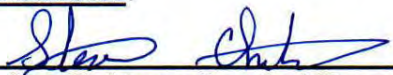

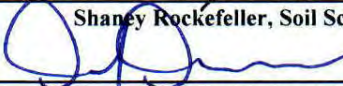
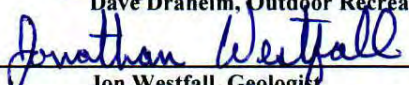

**Conclusion -- check one:**

The area, or a portion of the area, has wilderness character.

The area does not have wilderness character.

**Prepared by:**   
 Robert Alward, Wilderness Planner contractor

**Team Members:**

<u></u>	<u>4/13/09</u>
Steve Christensen, Rangeland Management Specialist	Date
<u></u>	<u>4/13/09</u>
Shaney Rockefeller, Soil Scientist	Date
<u></u>	<u>4.13.2009</u>
Dave Draheim, Outdoor Recreation Planner	Date
<u></u>	<u>04/13/2009</u>
Jon Westfall, Geologist	Date
<u></u>	<u>4/13/09</u>
Brent Grasty, GIS Coordinator	Date

(NOTE: Previous staff members who reviewed this unit include Botanist Jean Finley (retired 7/2008), and Wildlife Biologist Technician Sandy Vistine Ambor (transferred 8/2008)).

**Approved by:**

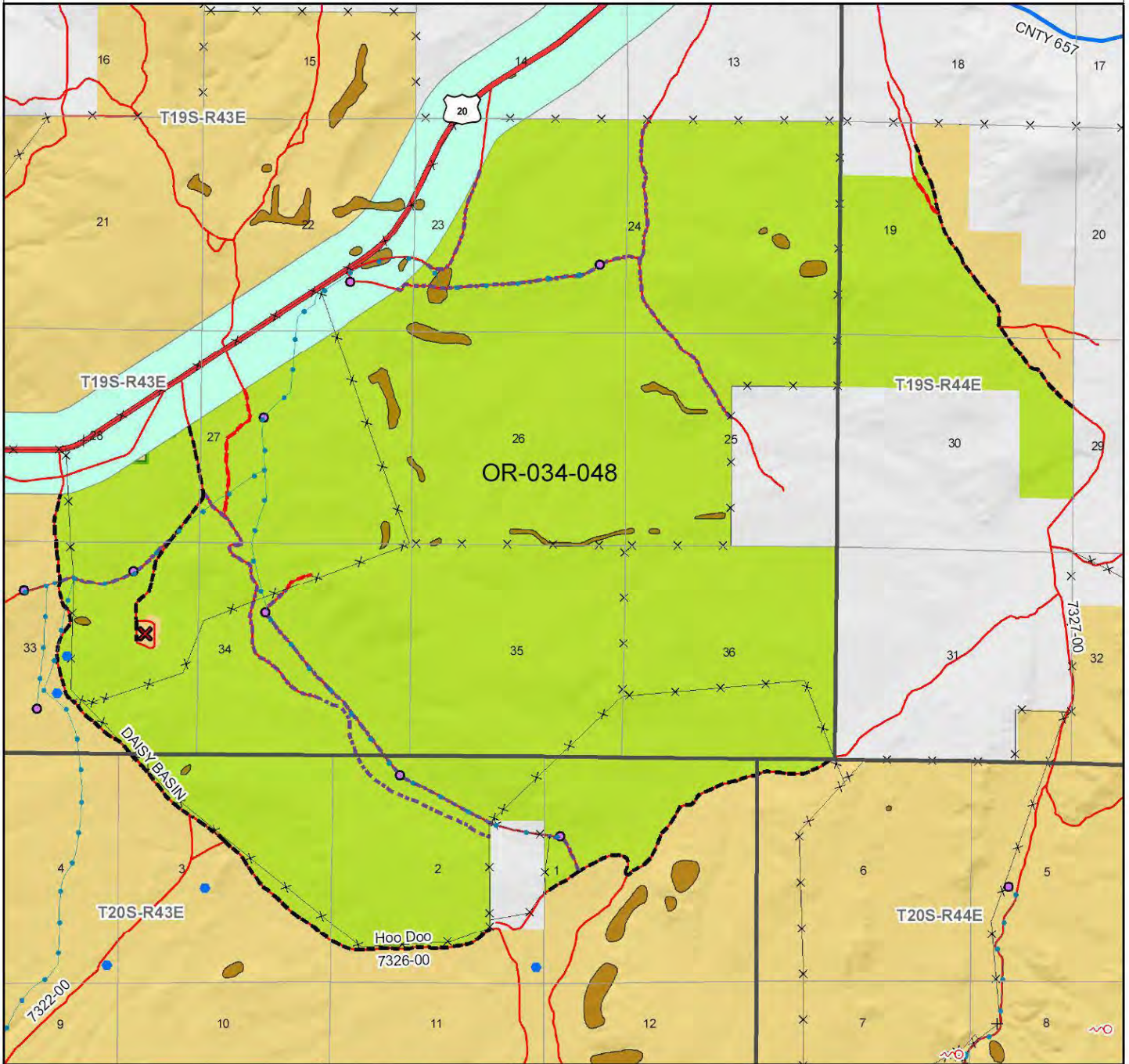
 10/15/10  
 Pat Ryan, Malheur Resource Area Field Manager Date

*This form documents information that constitutes an inventory finding on wilderness characteristics. It does not represent a formal land use allocation or a final agency decision subject to administrative remedies under either 43 CFR parts 4 or 1610.5-2.*



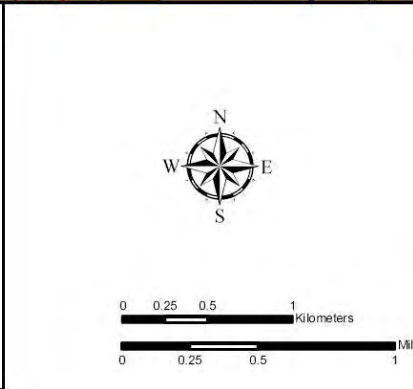
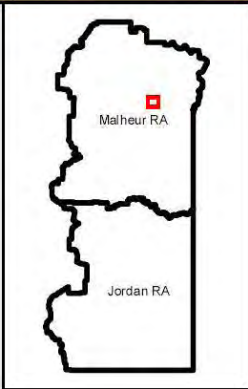
# Wilderness Characteristics - Overview

## Vines Hill - OR-034-048 - Map 1 of 2



**Legend**

Developed Spring	Route Types - BLM Determination
Wildlife Guzzler	Boundary Road
Earthen Reservoir	Motorized Primitive Trail (MPT)
Pipeline	Discontinued Use
Trough	Routes - Outside Wild Char Unit
Fence	County
Storage Tank	Major Highway
Surface Mining Disturbance	BLM Numbered & Other Routes
Sage Grouse Lek	Land Ownership
Special Status Plant	Bureau of Land Management
BLM Wild Char Inventory Unit	State
Wilderness Study Area	Private
Mineral Material Site	Other Federal Land
Road/Utility Right-of-Way	
Major Water Body	



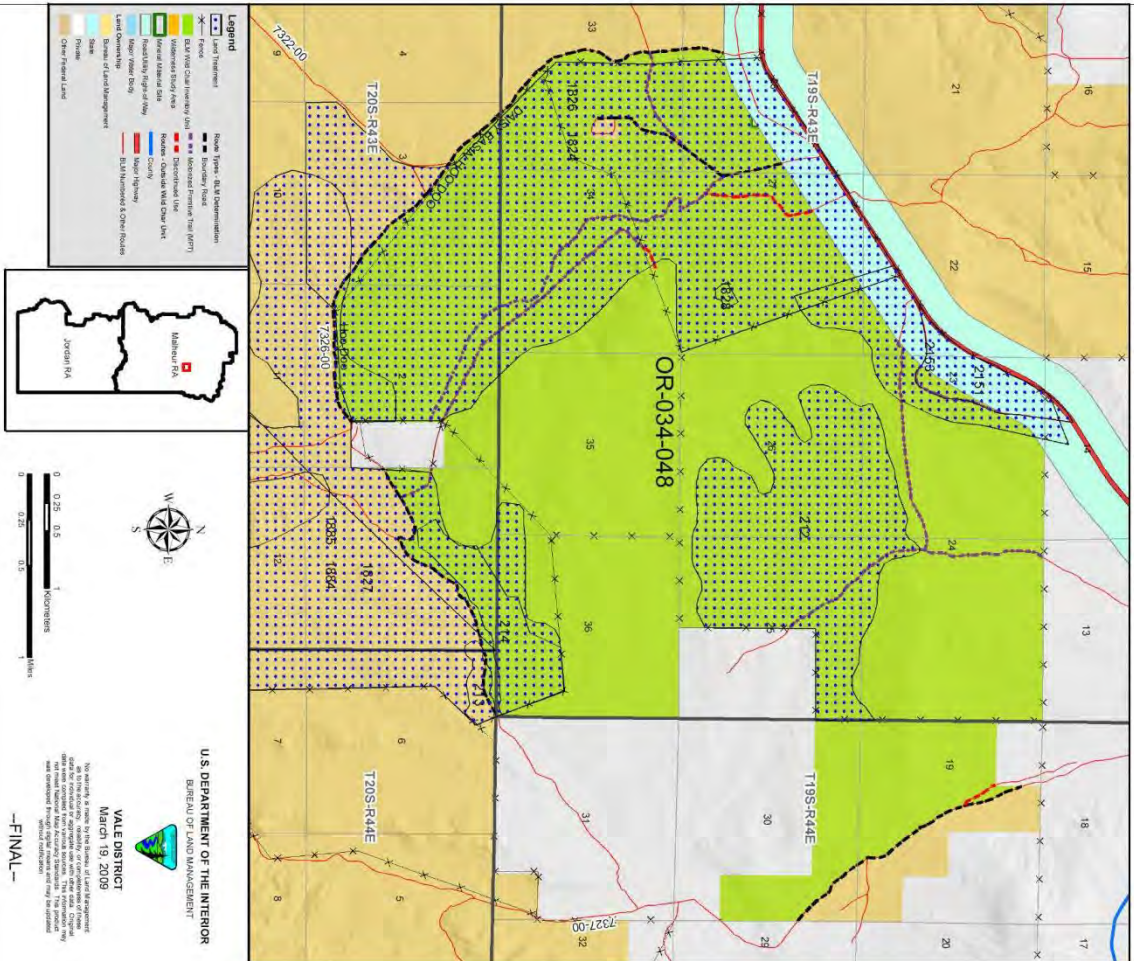
**U.S. DEPARTMENT OF THE INTERIOR**  
BUREAU OF LAND MANAGEMENT

**VALE DISTRICT**  
March 19, 2009

No warranty is made by the Bureau of Land Management as to the accuracy, reliability, or completeness of these data for individual or aggregate use with other data. Original data were compiled from various sources. This information may not meet National Map Accuracy Standards. This product was developed through digital means and may be updated without notification.

--FINAL--

**Wilderness Characteristics - Land Treatments**  
**Vines Hill - OR-034-048 - Map 2 of 2**



**Wilderness Characteristics - Land Treatments**  
**Vines Hill - OR-034-048 - Map 2 of 2**

OBJECTID*	NAME	TREATMENT TYPE	SEED GROUP	DATE
212	DOUBLE MOUNTAIN FIRE REHAB.	Drill Seeding	Non-native Grasses	20051115
213	DOUBLE MOUNTAIN FIRE REHAB.	Drill Seeding	Non-native Grasses	20051115
214	DOUBLE MOUNTAIN FIRE REHAB.	Drill Seeding	Non-native Grasses	20051115
1824	VINES HILL SEEDING	Prescribed Burn	Not Applicable	1964
1826	VINES HILL SEEDING	Drill Seeding	Unknown	1964
1827	VINES HILL SEEDING	Drill Seeding	Non-native Grasses	1982
1828	VINES HILL FIRE REHAB	Drill Seeding	Non-native Grasses	1972
1894	RABBIT FARM SEEDING	Plow/Disc	Not Applicable	1970
1895	RABBIT FARM SEEDING	Drill Seeding	Unknown	1970
2151	HILLTOP SEEDING	Drill Seeding	Non-native Grasses	1985
2153	VINES HILL BURN	Prescribed Burn	Not Applicable	1984

Note: The Land Treatments represented by navy blue dots on the map to the left are labeled with the treatments' ObjectIDs listed in the first field of the Land Treatments table shown above. Multiple types of treatments may have been applied to the same area. For example, one treatment area may have been plowed and drill seeded - a record is shown in the table for each type of treatment.