

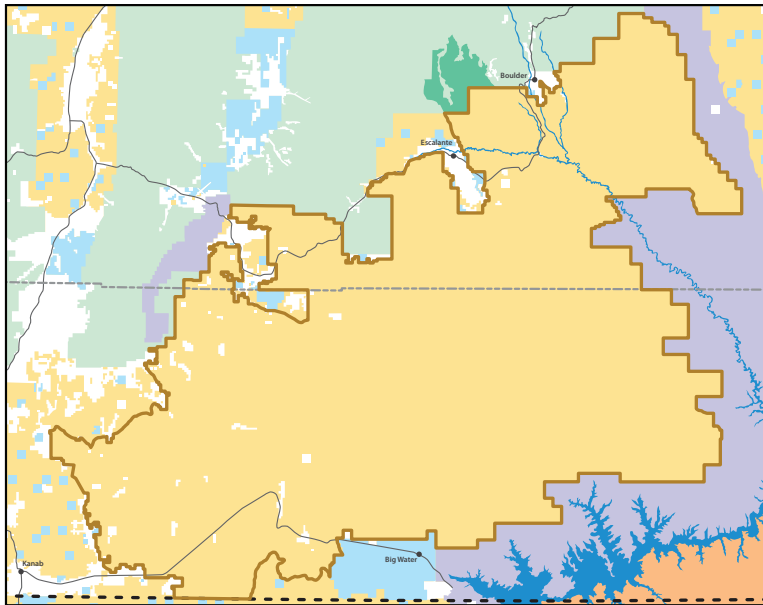


Grand Staircase-Escalante National Monument and Kanab-Escalante Planning Area, Utah

The Bureau of Land Management has approved resource management plans for each of the three units in Grand Staircase-Escalante National Monument. The BLM has also approved a resource management plan for the 861,974 acres removed from the monument by Presidential Proclamation 9682, called the Kanab-Escalante Planning Area.

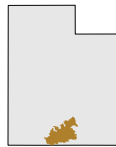
Federal land ownership remains the same

Pursuant to Presidential Proclamation 6920, September 18, 1996

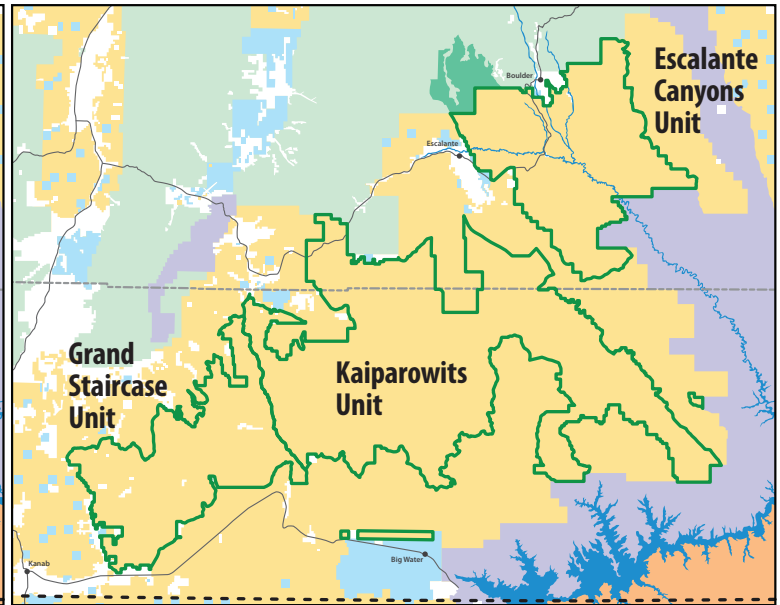


1.9 million Federal acres

- Original Grand Staircase-Escalante National Monument boundary
- Current Grand Staircase-Escalante National Monument boundary
- County boundary
- State boundary
- Roads

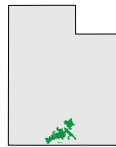


Pursuant to Presidential Proclamation 9682, December 4, 2017



1.9 million Federal acres
(1.0 million Federal acres remain in the monument)

- Water
- Bureau of Land Management
- National Park Service
- U.S. Forest Service
- Indian Reservation
- State
- U.S. Forest Service Wilderness



SAME LAWS APPLY

	Federal lands inside monument boundaries	Federal lands outside monument boundaries
National Environmental Policy Act	✓	✓
National Historic Preservation Act	✓	✓
Archaeological Resources Protection Act	✓	✓
Paleontological Resources Preservation Act	✓	✓
Federal Land Policy and Management Act	✓	✓
Endangered Species Act	✓	✓
Wilderness Act of 1964	✓	✓
Native American Graves Protection and Repatriation Act	✓	✓

RESOURCE MANAGEMENT PLAN PROVISIONS

Throughout the planning process, the BLM provided opportunities for public and Tribal involvement, including government-to-government consultation, public meetings, a public comment period on the draft plans, a public comment period on the proposed target shooting closure, and two protest periods and a Governor's Consistency Review on the proposed plans/final environmental impact statement.

Grand Staircase-Escalante National Monument Units (1,003,863 acres)

- Provide for the proper care and management of monument objects and values while allowing other appropriate uses.
- No lands are available for sale under section 203 of the Federal Land Policy and Management Act, consistent with the Presidential Proclamations.
- Consistent with the Presidential Proclamations, prohibit mineral leasing, the location of new mining claims, and mineral exploration and development from withdrawn lands within the monument, subject to valid existing rights.
- No casual collection of any paleontological resources is allowed.
- Motorized travel is limited to designated routes, except for the No Man's Mesa Research Natural Area (1,464 acres), which is closed to off-highway vehicle use.
- There are 991,874 acres available and 9,879 acres unavailable for grazing. The Escalante River Corridor remains unavailable for grazing, with the exception of gaps to allow cattle access to the river for water.

Kanab-Escalante Planning Area (861,974 acres)

- The plan establishes recreation management areas to manage and appropriately develop high-use recreation sites.
- No lands are identified as available for sale under section 203 of the Federal Land Policy and Management Act.
- These lands are generally open to locatable mineral entry, mineral material disposal, and leasable mineral development with constraints, including timing, controlled surface use, and no surface occupancy requirements.
- Noncommercial casual collection of common invertebrate and plant fossils is generally allowed with the exception of Camp Flats (6,226 acres) and Tibbett Head (18,364 acres).
- Motorized travel within most of the area is limited to designated routes. There is one open off-highway vehicle area (116 acres) in Little Desert Recreation Management Zone.
- There are 848,424 acres available and 5,397 acres unavailable for grazing.

Monument objects and values

Archaeological, historic, and cultural resources



Geologic features and landscapes



Paleontological, biological, and ecological resources



WHAT'S NEXT?

- Consult and coordinate as appropriate with partners, cooperating agencies, Tribes, local government, stakeholders, interested members of the public, and relevant advisory councils.
- Continue to engage the public through the National Environmental Policy Act (NEPA) process, through consultation under the National Historic Preservation Act, and pursuant to other applicable laws and policies on planning and recreation infrastructure development projects.
- Develop implementation-level plans for cultural resource management, recreation management, travel and transportation management, and paleontological resource management.

