

Wilderness Inventory Unit Index of Documents

***Updated** - Willow Creek Contiguous OR-036-087, 12 total pages

Page 1: Index Cover Sheet

[Page 2: Form 1 – Documentation of BLM Wilderness Inventory: Findings on Record](#)

[Page 5: Form 2 – Documentation of Current Wilderness Inventory Conditions](#)

[Page 10: Form 2 – Summary of Findings and Conclusion](#)

[Page 11: Wilderness Characteristics Overview – Willow Creek OR-036-087 Map 1 of 2](#)

[Page 12: Wilderness Characteristics-Land Treatments-Willow Creek OR-036-087 Map 2 of 2](#)

**Prepared by:
U.S. Department of the Interior
Bureau of Land Management
Vale District Office
100 Oregon Street
Vale, Oregon 97918**



H-6300-1-WILDERNESS INVENTORY MAINTENANCE IN BLM OREGON/WASHINGTON

APPENDIX B – INVENTORY AREA EVALUATION

Evaluation of Current Conditions:

- 1) Document and review the existing BLM wilderness inventory findings on file, if available, regarding the presence or absence of individual wilderness characteristics, using Form 1, below.

- 2) Consider relevant information regarding current conditions available in the office to identify and describe any changes to the existing information (use interdisciplinary (ID) team knowledge, aerial photographs, field observations, maps, etc.), and document your findings on Form 2, below.

When Citizen Information has been submitted regarding wilderness characteristics, document the submitted materials including: date of Submission; Name of District(s) and Field Office(s) Affected; Type of material Submitted (e.g. narrative, map, photo). Evaluate any submitted citizen information regarding the validity of proposed boundaries of the unit(s), the existence of roads and other boundary features, the size of the unit(s), and the presence or absence of wilderness characteristics based on relevant information available in the office (prior BLM inventories, ID team knowledge, aerial photographs, field observations, maps, etc.)

Conduct field reviews as necessary to verify information and to ascertain current conditions. Reach conclusions on current conditions including boundaries, size of areas and presence or absence of wilderness characteristics. Fully explain the basis for each conclusion on form 2, including any critical differences between BLM and citizen information.

Document your findings regarding current conditions for each inventoried area. Describe how the present conditions are similar to, or have changed from, the conditions documented in the original wilderness inventory. Document your findings on Form 2 for each inventory area. Cite to or attach data considered, including photographs, maps, GIS layers, field trip notes, project files, *etc.*

Year: 2012 **Unit Number/Name:** OR-036-087 – Willow Creek Contiguous

FORM 1 -- DOCUMENTATION OF BLM WILDERNESS INVENTORY FINDINGS ON RECORD

1. Is there existing BLM wilderness inventory information on all or part of this area?

Yes No (If yes, and if more than one unit is within the area, list the names of those units.):

A.) Inventory Source(s) -- (X) Denotes all applicable BLM Inventory files, printed maps, or published BLM Decision documents with information pertaining to this unit.

Wilderness Inventories

- (X) 1978 –1980 --- BLM Wilderness Inventory units --- partially of OR-3-152 of OR-03-12-02 (BLM documents in case files).
- (X) April 1979 – *Wilderness -- Proposed Initial Inventory – Road less Areas and Islands Which Clearly Do Not have Wilderness Characteristics, Oregon and Washington*
- (X) 2007-2011 Vale District Wilderness Characteristics Inventory Maintenance – OR- 036-087, Willow Creek Contiguous (2010)

Wilderness Decision Documents

- (X) August 1979 – *Wilderness Review – Initial Inventory, Final Decision on Public Lands Obviously Lacking Wilderness Characteristics and Announcement of Public Lands to be Intensively Inventoried for Wilderness Characteristics, Oregon and Washington* (green document).
- () October 1979 – *Wilderness Review – Intensive Inventory - Oregon, Proposed Decision on the Intensive Wilderness Inventory of Selected Areas* (grey document).
- (X) March 1980 – *Wilderness Review – Intensive Inventory; Final Decisions on 30 Selected Units in Southeast Oregon and Proposed Decisions on Other Intensively Inventoried Units in Oregon and Washington* (orange document).
- (X) November 1980 - *Wilderness Inventory – Oregon and Washington, Final Intensive Inventory Decisions* (brown document).
- () November 1981 *Stateline Intensive Wilderness Inventory Final Decision, Oregon, Idaho, Nevada, Utah* (tan document).
- (X) 2007-2011 Vale District Wilderness Characteristics Inventory Maintenance

B.) Inventory Unit Name(s)/Number(s)

Partially of BLM OR-3-152 of OR-03-12-02; and, OR-036-087 Willow Creek Contiguous (2010)

C.) Map Name(s)/Number(s)

- (X) Final Decision – Initial Wilderness Inventory Map, August 1979, Oregon
- () Proposed Decision -- Intensive Wilderness Inventory of Selected Areas Map, October 1979, Oregon
- (X) Intensive Wilderness Inventory Map, March 1980, Oregon
- (X) Intensive Wilderness Inventory --Final Decisions Map, November 1980, Oregon.
- () November, 1981 *Stateline Intensive Wilderness Inventory Final Decision, Oregon, Idaho, Nevada, Utah* (tan document).
- (X) 2010 Vale District Wilderness Characteristics Inventory Maintenance – OR- 036-087 Willow Creek Contiguous

D.) BLM District(s)/Field Office(s)

Vale District Office Jordan Field Office
 Burns District Office Andrews Field Office

2. BLM Inventory Findings on Record

(Existing inventory information regarding wilderness characteristics (if more than one BLM inventory unit is associated with the area, list each unit and answer each question individually for each inventory unit):

Inventory Source: See above.

Unit#/ Name	Size (historic acres)	Natural Condition? Y/N	Outstanding Solitude? Y/N	Outstanding Primitive & Unconfined Recreation? Y/N	Supplemental Values? Y/N
Partially of OR-3-152 of OR-03-12-02 *	1,910**	N	***	***	***
OR-036-087 Willow Creek Contiguous (7-19-2010)	Vale = 1,623 Burns = 1,287	Y Y	Y ****	Y ****	Y Y
TOTAL					

* -- The late 1970’s inventory folder for OR-03-12-02 could not be located.
 ** -- Most of OR-3-152 became Willow Creek WSA; this acreage is what was not included in the WSA when it was designated in 1980.
 *** -- This was not provided relative to the acreage excluded from the designated WSA.
 **** -- At the time conducted by Vale District, a WC criteria finding for only that portion of the inventory unit within Vale District was established. (Vale District acknowledged the Burns District 2003 finding made for that portion of the unit located within that district). Also see “NOTE” of current (2012) Form 2 for the 2012 WC Inventory Maintenance for this unit.

H-6300-1-WILDERNESS INVENTORY MAINTENANCE IN BLM OREGON/WASHINGTON

APPENDIX B – INVENTORY AREA EVALUATION

Evaluation of Current Conditions:

- 1) Document and review the existing BLM wilderness inventory findings on file, if available, regarding the presence or absence of individual wilderness characteristics, using Form 1, below.
- 2) Consider relevant information regarding current conditions available in the office to identify and describe any changes to the existing information (use interdisciplinary (ID) team knowledge, aerial photographs, field observations, maps, etc.), and document your findings on Form 2, below.

When Citizen Information has been submitted regarding wilderness characteristics, document the submitted materials including: date of Submission; Name of District(s) and Field Office(s) Affected; Type of material Submitted (e.g. narrative, map, photo). Evaluate any submitted citizen information regarding the validity of proposed boundaries of the unit(s), the existence of roads and other boundary features, the size of the unit(s), and the presence or absence of wilderness characteristics based on relevant information available in the office (prior BLM inventories, ID team knowledge, aerial photographs, field observations, maps, etc.)

Conduct field reviews as necessary to verify information and to ascertain current conditions. Reach conclusions on current conditions including boundaries, size of areas and presence or absence of wilderness characteristics. Fully explain the basis for each conclusion on form 2, including any critical differences between BLM and citizen information.

Document your findings regarding current conditions for each inventoried area. Describe how the present conditions are similar to, or have changed from, the conditions documented in the original wilderness inventory. Document your findings on Form 2 for each inventory area. Cite to or attach data considered, including photographs, maps, GIS layers, field trip notes, project files, *etc.*

FORM 2 -- DOCUMENTATION OF CURRENT WILDERNESS INVENTORY CONDITIONS

Unit Number/Name: **OR-036-087 – Willow Creek Contiguous**

NOTE: This wilderness characteristics (WC) inventory unit OR-036-087 includes public lands located within both the Vale and Burns BLM districts. This current WC inventory maintenance for this unit is the result of BLM national guidance being re-issued for conducting WC inventory since this inventory unit had inventory maintenance completed on it with a BLM Vale District finding dated July 19, 2010.

Description of Current Conditions: [Include land ownership, location, topography, vegetation features and summary of major human uses/activities.]

1. Is the unit of sufficient size?

Yes **X** No _____

Description: There are four separate public land parcels that constitute this inventory unit (2,906 acres): an east parcel, a west parcel, a north parcel and a northeast parcel. All parcels are adjacent to Willow Creek WSA (OR-3-152). The east (423 acres), north (10 acres) and northeast (10 acres) parcels are fully within Vale District; the west parcel (2,463 acres) is partially in Vale District (1,289 acres) and partially in Burns District (1,174 acres). There are no physical features within the west parcel which distinguish Burns District from Vale District (the administrative district boundary is a legal descriptive in this area).

Unlike the past, for the following reasons all four parcels are currently contiguous with Willow Creek WSA. During the late 1970's BLM wilderness characteristics (WC) inventory, 3 of the 4 parcels were identified as being affected by land treatment projects which resulted in them being excluded from BLM's 1980 final decision of designating Willow Creek WSA. The east and northeast parcels were part of the 1968 Whitehorse brush control and disc-drilled seeding of non-native grasses. The west parcel was partially affected by the 1973 Willow Butte disc-drilled seeding of non-native grasses. During the late 1970's WC inventory, soil furrows and/or linear rows of vegetation were still visually apparent to the average visitor, with contrasting linear vegetative lines separating the seeded areas from the native range composition. Since that time, vegetative changes within the treated areas has occurred to the extent that there is no longer a distinctive visual contrast between the treated and adjacent untreated terrain.

Within Vale District, the northern-most tip boundary of the 1980 designated Willow Creek WSA was the section line between sections 26 and 35. This has resulted in the identification of the north parcel of this OR-036-087 inventory unit, since a section line is not a qualifying boundary feature to delineate a roadless area for WC inventory. The other boundaries of this parcel are BLM road 6315-00 and another road traversing public

land. The northeast parcel was separated from the WSA by the edge of the drilled seeding; the east parcel was separated from the WSA by Little Whitehorse Creek and a rangeland fence (which also served as a boundary of the seeding). The other boundary feature of both the east and the northeast parcels is BLM road 6315-00. The west parcel is bounded by a rangeland fence (with a portion of the seeding against it, and the remainder of the fence not associated with the seeding) and by BLM road 6315-00. Within Burns District of the west parcel, along with a segment of BLM road 826-0-00 (alias, Country road 3180), a segment of the same rangeland fence separates it from the same WSA.

Presently, with no longer a visual contrast to the average visitor between the seedings and native rangeland, and with rangeland fence not a qualifying feature as a boundary to delineate a roadless area for WC inventory, the result is all four parcels are contiguous to Willow Creek WSA.

For the west parcel of OR-036-087, the remaining boundary features are BLM road 6319-0-00 (alias, County 3183 Willow Butte Loop Road) on its north end, and BLM road 8260-0-00 (alias, County 3180 Trout Creek Mountain Road) on its southwest side. The remaining boundary of the north parcel is a combination of County road 3182 and a continuing road crossing public lands, and for the east parcel a rangeland fence on its south side and a road crossing public land on its west side. A 0.8 mile cherry-stem road in section 20 within Burns District is also a boundary feature of this inventory unit. The inventory unit's boundary roads receive mechanical maintenance as needed to keep them passable on a relatively regular and continuous (seasonal) basis.

NOTE: The north and northeast parcels are associated solely with a portion of Willow Creek WSA which BLM identified in October 1991 as not being suitable and/or manageable for designation as Wilderness by Congress. However, matters of suitability and manageability are not factors of consideration for wilderness characteristic inventory.

2. Is the unit in a natural condition?

Yes X No N/A

Description: The east parcel is dominated by a ridgeline through its length with moderate down slopes to where it reaches Little Whitehorse Creek on the parcel's west side and its boundary road on its east side. Elevations range from 5,080 to 5,522 feet. The north parcel (4,735 – 4,780 feet), northeast parcel (4,880 to 5,000 feet) and west parcel (5,120 – 7,000 feet) are characterized by predominately moderate to slight north-facing down slopes. Vegetation of all 4 parcels is a mix of native and nonnative grasses and sagebrush. The north parcel is within the Heath Creek – Sheephead Wild Horse Management Area.

Refer to the associated Map 1 and Map 2 of this inventory unit for human imprints within the parcels. There are no manmade developments in the north and northeast parcels. The

east parcel has 1.1 miles of 2 MPTs and 1.8 miles of rangeland fence, partially for 2 riparian enclosures along Little Whitehorse Creek and the remainder along the unit's south boundary with the WSA (these fences not depicted on Map 1 or Map 2). The west parcel has 3 earthen reservoirs (2 in Vale District -- each adjacent to the parcel's north boundary road -- and one in Burns District); 3 miles of buried pipeline in Burns District (a portion which is on the border of the contiguous WSA) affiliated with the earthen reservoir; 4.4 miles of rangeland fence (approximately 2.2 miles in each district); 2.4 miles of motorized primitive trails (MPTs) (0.5 mile of 2 MPTs in Vale District, and 1.9 miles of 5 MPTs in Burns District); and, in Burns District 2 developed springs. Within the unit, presently, to the average visitor there remains no visual contrast of a 1968 chemical treatment to vegetation or of soil furrows or linear lines of vegetation from 1968 and 1973 disc-drilled seedings. In the inventory unit, within Burns District, approximately 200 acres of Little Trout Creek seeding, in part, provides forage to take livestock grazing pressure off important higher elevation sage-grouse habitat in the Trout Creek Mountains. Recognized within the Trout Creek Mountain Allotment Management Plan (AMP), the seeding may need to be maintained from time to time to continue to produce the productivity necessary to meet management objectives of the AMP. Future seeding maintenance may include brush beating, burning, spraying, drilling seed or broadcasting seed or any combination of treatments.

Being that each of the 4 parcels are contiguous with the WSA, of the two parcels which have developments in them, the type, number, extent and nature of those developments are not so great as to preclude the WSA and the parcels combined from appearing to be affected primarily by the forces of nature with the imprint of mankind being substantially unnoticeable to the average visitor. Further, the remaining 2 parcels – not having any developments in them – does not adversely affect the present natural condition of the combined contiguous WSA and 2 parcels. For these reasons, the 4 parcels in combination with the natural condition of the contiguous WSA is an increased area which appears, overall, to be affected primarily by the forces of nature with the imprint of mankind being substantially unnoticeable to the average visitor.

3. Does the unit have outstanding opportunities for solitude?

Yes No N/A

Description: Each parcel, of itself, does not provide outstanding opportunities for solitude due to they being too small and without sufficient screening provided by topography or vegetation. Together with the contiguous WSA, though, the overall outstanding opportunities for solitude are only slightly enhanced due to the increased size of the roadless area. However, the net increase for outstanding opportunities is very minimal because of the small size and associated nominal topographic and vegetative screening properties of the parcels.

4. Does the unit have outstanding opportunities for primitive and unconfined recreation?Yes X No N/A

Description: Individually, none of the 4 parcels possess special or unique features that would draw visitors to them which would provide outstanding opportunities for primitive and unconfined recreation. Being contiguous with the WSA, the overall increased size in area does, however, provide for a slight enhancement of some of the existing outstanding opportunities associated with the WSA, which includes wildlife viewing, panoramic sightseeing, and photography.

There is opportunity to view wild horses of the Heath Creek–Sheephead Wild Horse Management Area. Although a less common and interesting experience, viewing wild horses is not an outstanding opportunity for a primitive and unconfined recreation activity. The presence of wild horses is a feature of the natural condition of the unit and is also described as a supplemental value associated with the inventory unit.

5. Does the unit have supplemental values?Yes X No N/A

Description: Lahontan cutthroat trout, a federal Threatened species, are in Little Whitehorse Creek of the east parcel. The north parcel is within the Heath Creek–Sheephead Wild Horse Management Area. In the west parcel, within Burns District, are two sites of solitary milkvetch, a BLM special status plant species.

Summary of Findings and Conclusion

Unit Name and Number: OR-036-087 – Willow Creek Contiguous

Summary Results of Analysis:

- 1. Does the area meet any of the size requirements? X Yes No
- 2. Does the area appear to be natural? X Yes No
- 3. Does the area offer outstanding opportunities for solitude or a primitive and unconfined type of recreation? X Yes No NA
- 4. Does the area have supplemental values? X Yes No NA

Conclusion -- check one:

- X The area, or a portion of the area, has wilderness character.
- The area does not have wilderness character.

Prepared by:

Robert Alward
 Robert Alward, Wilderness Planner, contractor, Vale District

Eric Haakenson 17-April 2012
 Eric Haakenson, Outdoor Recreation Specialist, (Steens Wilderness Manager), Burns District

Team Members:

David R Ward 23 APR 12
 Dave Ward, Rangeland Management Specialist, Burns District Date

Matt Obradovich 04/17/2012
 Matt Obradovich, Wildlife Biologist, Burns District Date

Daryl Bingham 17 APRIL 2012
 Daryl Bingham, Natural Resource Specialist Fisheries Biologist, Burns District Date

Approved by:

Joan Suther 4-23-12
 Joan Suther, Andrews Resource Area Field Manager, Burns District Date

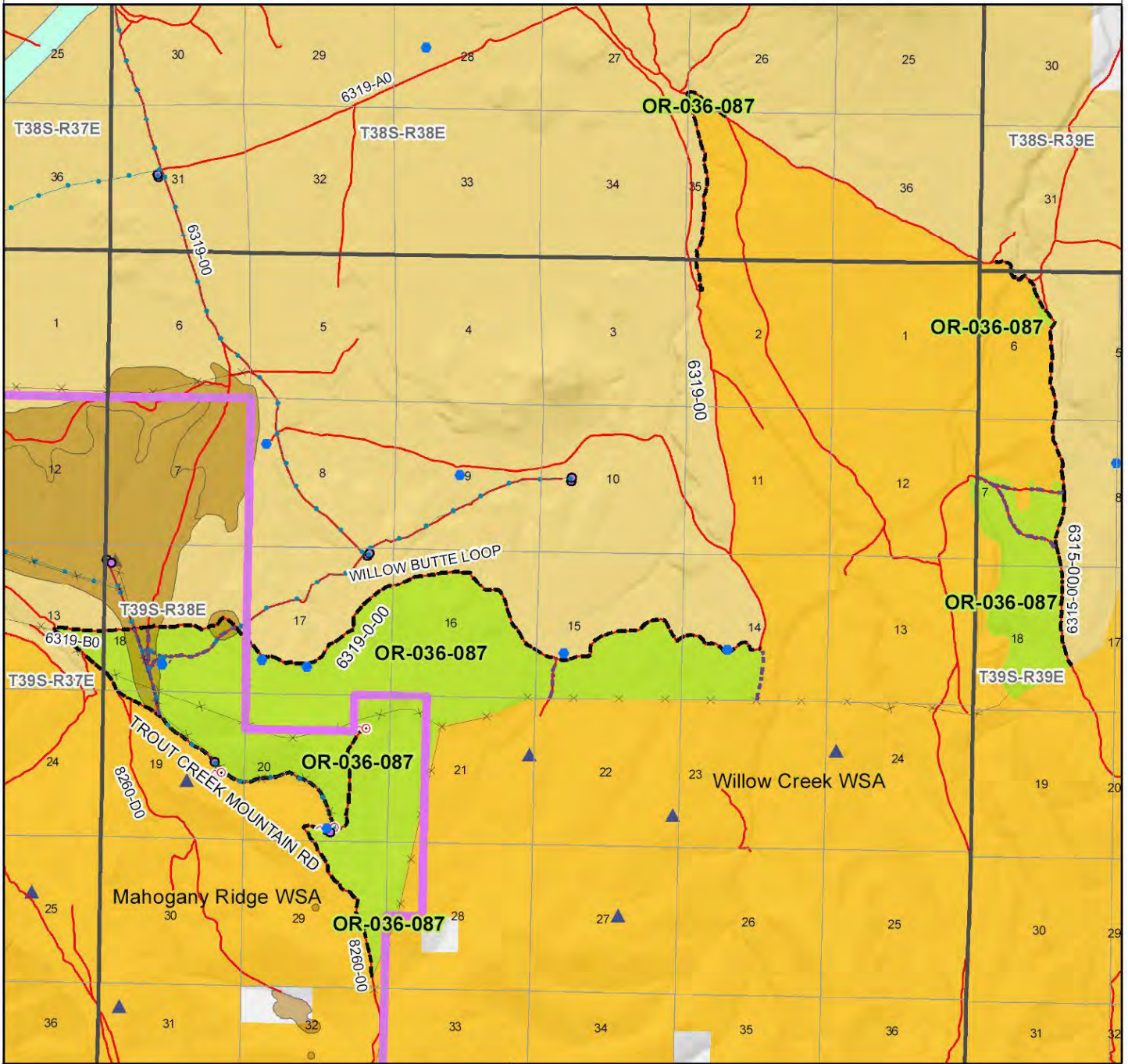
I approve the current OR-036-087 criteria findings, and as supported by the approved Form 2 findings of Vale District for this inventory unit dated July 19, 2010. (A copy included herein of the Form 2's Summary of Findings and Conclusion; the entire 2010 Form 2 is retained in Vale District wilderness characteristics inventory files.)

Tracy Skerjanec 4/20/12
 Tracy Skerjanec, Acting Jordan Resource Area Field Manager, Vale District Date

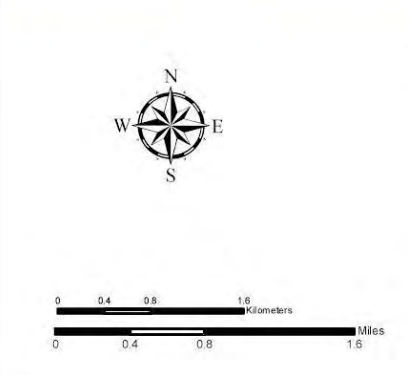
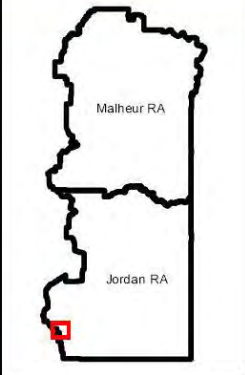
This form documents information that constitutes an inventory finding on wilderness characteristics. It does not represent a formal land use allocation or a final agency decision subject to administrative remedies under either 43 CFR parts 4 or 1610.5-2.

Wilderness Characteristics - Overview

Willow Creek Contiguous - OR-036-087 - Map 1 of 2



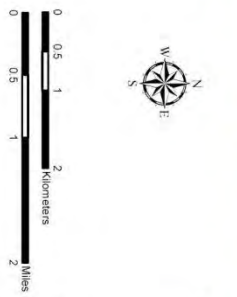
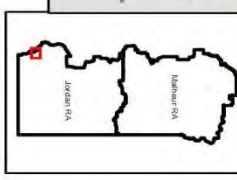
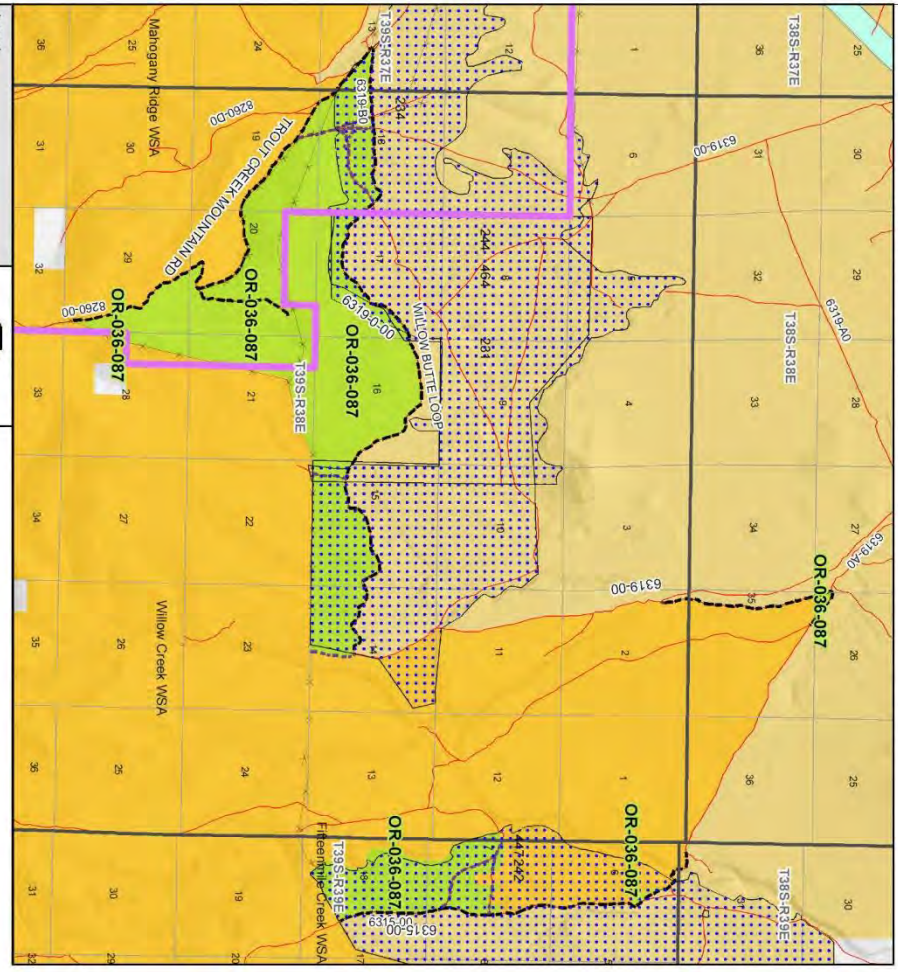
Legend	
	Developed Spring
	Wildlife Guzzler
	Earthen Reservoir
	Pipeline
	Trough
	Fence
	Storage Tank
	Surface Mining Disturbance
	Sage Grouse Lek
	Special Status Plant
	BLM Wild Char Inventory Unit
	Wilderness Study Area
	Mineral Material Site
	Road/Utility Right-of-Way
	Major Water Body
	Route Types - BLM Determination Boundary Road
	Motorized Primitive Trail (MPT)
	Discontinued Use
	Routes - Outside Wild Char Unit County
	Major Highway
	BLM Numbered & Other Routes
	Land Ownership Bureau of Land Management
	State
	Private
	Other Federal Land
	District Boundary



U.S. DEPARTMENT OF THE INTERIOR
 BUREAU OF LAND MANAGEMENT

VALE DISTRICT
 February 22, 2012
No warranty is made by the Bureau of Land Management as to the accuracy, reliability, or completeness of these data for individual or aggregate use with other data. Original data were compiled from various sources. This information may not meet National Map Accuracy Standards. This product was developed through digital means and may be updated without notification.
--FINAL--

Wilderness Characteristics - Land Treatments
Willow Creek Contiguous - OR-036-087 - Map 2 of 2



U.S. DEPARTMENT OF THE INTERIOR
 BUREAU OF LAND MANAGEMENT
 VALE DISTRICT
 March 5, 2012
 No warranty is made by the Bureau of Land Management for the use of the information contained herein for purposes not intended by the Bureau. The product is provided as a service to the public and is not intended for use in any other manner. The product is provided as a service to the public and is not intended for use in any other manner.

Wilderness Characteristics - Land Treatments
Willow Creek Contiguous - OR-036-087 - Map 2 of 2

OBJECTID*	NAME	TREATMENT TYPE	SEED GROUP	DATE
242	WHITEHORSE B.C.	Chemical Treatment	Not Applicable	1968
244	WILLOW BUTTE SDG	Plow/Disc	Not Applicable	1973
447	WHITEHORSE SDG	Drill Seeding	Non-native Grasses	1968
464	WILLOW BUTTE SDG	Drill Seeding	Non-native Grasses	1973

OBJECTID*	TRT_NAME	REVEG_TYPE
231	ESI	Range Seeding
234	Little Trout Cr Seeding	Range Seeding

Note: The Land Treatments represented by navy blue dots on the map to the left are labeled with the treatments' ObjectIDs listed in the first field of the Land Treatments table shown above. Multiple types of treatments may have been applied to the same area. For example, one treatment area may have been plowed and drill seeded - a record is shown in the table for each type of treatment.