

## Wilderness Inventory Unit Index of Documents

**\*Updated** – Red Lookout Butte OR-036-048, 10 total pages

Page 1: Index Cover Sheet

[Page 2: Form 1 – Documentation of BLM Wilderness Inventory: Findings on Record](#)

[Page 6: Form 2 – Documentation of Current Wilderness Inventory Conditions](#)

[Page 9: Form 2 – Summary of Findings and Conclusion](#)

[Page 10: Wilderness Characteristics Overview–Red Lookout Butte OR-036-048 Map 1](#)

**Prepared by:  
U.S. Department of the Interior  
Bureau of Land Management  
Vale District Office  
100 Oregon Street  
Vale, Oregon 97918**



## **H-6300-1-WILDERNESS INVENTORY MAINTENANCE IN BLM OREGON/WASHINGTON**

### **APPENDIX B – INVENTORY AREA EVALUATION**

#### **Evaluation of Current Conditions:**

- 1) Document and review the existing BLM wilderness inventory findings on file, if available, regarding the presence or absence of individual wilderness characteristics, using Form 1, below.
- 2) Consider relevant information regarding current conditions available in the office to identify and describe any changes to the existing information (use interdisciplinary (ID) team knowledge, aerial photographs, field observations, maps, etc.), and document your findings on Form 2, below.

When Citizen Information has been submitted regarding wilderness characteristics, document the submitted materials including: date of Submission; Name of District(s) and Field Office(s) Affected; Type of material Submitted (e.g. narrative, map, photo). Evaluate any submitted citizen information regarding the validity of proposed boundaries of the unit(s), the existence of roads and other boundary features, the size of the unit(s), and the presence or absence of wilderness characteristics based on relevant information available in the office (prior BLM inventories, ID team knowledge, aerial photographs, field observations, maps, etc.)

Conduct field reviews as necessary to verify information and to ascertain current conditions. Reach conclusions on current conditions including boundaries, size of areas and presence or absence of wilderness characteristics. Fully explain the basis for each conclusion on form 2, including any critical differences between BLM and citizen information.

Document your findings regarding current conditions for each inventoried area. Describe how the present conditions are similar to, or have changed from, the conditions documented in the original wilderness inventory. Document your findings on Form 2 for each inventory area. Cite to or attach data considered, including photographs, maps, GIS layers, field trip notes, project files, *etc.*

Year: 2012 Unit Number/Name: OR-036-048 -- Red Lookout Butte

**FORM 1 -- DOCUMENTATION OF BLM WILDERNESS INVENTORY  
FINDINGS ON RECORD**

**1. Is there existing BLM wilderness inventory information on all or part of this area?**

**NOTE:** A 1970's BLM-generated Mylar overlay map of Vale District's Southern (i.e. Jordan) Resource Area Unit Resource Analysis/Management Framework Plan (URA/MFP) depicts this area to be within a larger OR-03-08-26 WC inventory unit. However, no associated supporting written documentation regarding this original unit can be located in Vale District files at this time. Furthermore, the area within OR-03-08-26 that, in part, represents the present OR-036-48 WC inventory unit is not addressed in any of the late 1970's OR BLM WC decision documents and is not displayed with a WC identifier number on any of those documents affiliated reference maps.

In the late 1970's, a portion of OR-03-08-26 was, in part, included in the BLM's late 1970's OR-02-78 WC inventory unit of Burns BLM District. Specifically, the present OR-036-048 is the same as what was identified in the late 1970's as unit OR-02-74L unit of the Burns District. This is identified in a more recent date (on a work map) by Burns District as "2-78L". Official records for the unit are retained at the Burns District office.

Yes X No \_\_\_\_\_ (If yes, and if more than one unit is within the area, list the names of those units.):

A.) **Inventory Source(s)** -- (X) Denotes all applicable BLM Inventory files, printed maps, or published BLM Decision documents with information pertaining to this unit.

SEE "**NOTE**", ABOVE.

**Wilderness Inventories**

- (X) 1978-1980 – Within BLM Wilderness Inventory Unit OR-03-08-26 (Vale District, unpublished BLM document map), and OR-02-74L then 2-78L of Burns District. See "**NOTE**", above, under "**1.**".
- ( ) April 1979 – *Wilderness -- Proposed Initial Inventory – Roadless Areas and Islands Which Clearly Do Not have Wilderness Characteristics, Oregon and Washington*
- (X) 2007-2011 Vale District Wilderness Characteristics Inventory Maintenance – OR-036-048, Red Lookout Butte (2010)

**Wilderness Decision Documents**

- (X) August 1979 – *Wilderness Review – Initial Inventory, Final Decision on Public Lands Obviously Lacking Wilderness Characteristics and Announcement of Public Lands to be Intensively Inventoried for Wilderness Characteristics, Oregon and Washington* (green document)

( ) October 1979 – *Wilderness Review – Intensive Inventory - Oregon, Proposed Decision on the Intensive Wilderness Inventory of Selected Areas* (grey document)

( X ) March 1980 – *Wilderness Review – Intensive Inventory; Final Decisions on 30 Selected Units in Southeast Oregon and Proposed Decisions on Other Intensively Inventoried Units in Oregon and Washington* (orange document)

**(NOTE: Is “2-74L”)**

( ) November 1980 - *Wilderness Inventory – Oregon and Washington, Final Intensive Inventory Decisions* (brown document)

( ) November 1981 *Stateline Intensive Wilderness Inventory Final Decision, Oregon, Idaho, Nevada, Utah* (tan document)

( X ) 2007-2011 Vale District Wilderness Characteristics Inventory Maintenance

**B.) Inventory Unit Name(s)/Number(s)**

Part of larger BLM OR-03-08-26 Vale District WC inventory unit; OR-02-74L then 2-78L of Burns District -- **See NOTE”, above, under “1.”**; and OR-036-048 Red Lookout Butte (2010)

**C.) Map Name(s)/Number(s)**

- ( X ) Final Decision – Initial Wilderness Inventory Map, August 1979, Oregon
- ( X ) Proposed Decision -- Intensive Wilderness Inventory of Selected Areas Map, October 1979, Oregon
- ( X ) Intensive Wilderness Inventory Map, March 1980, Oregon **(NOTE: is “2-74L”.)**
- ( ) Intensive Wilderness Inventory --Final Decisions Map, November 1980, Oregon
- ( ) November, 1981 *Stateline Intensive Wilderness Inventory Final Decision, Oregon, Idaho, Nevada, Utah* (tan document)
- ( X ) 2010 Vale District Wilderness Characteristics Inventory Maintenance – OR-036-048 Red Lookout Butte

**D.) BLM District(s)/Field Office(s)**

Vale District/Jordan Resource Area; Burns District Office /Andrews Field Office

**2. BLM Inventory Findings on Record**

(Existing inventory information regarding wilderness characteristics (if more than one BLM inventory unit is associated with the area, list each unit and answer each question individually for each inventory unit):

**Inventory Source:** See above.

<b>Unit#/ Name</b>	<b>Size (historic acres)</b>	<b>Natural Condition? Y/N</b>	<b>Outstanding Solitude? Y/N</b>	<b>Outstanding Primitive &amp; Unconfined Recreation? Y/N</b>	<b>Supplemental Values? Y/N</b>
OR-03-08-26*; OR-02-74L then 2-78L*	7,100	Y	N	N	N
OR-036-048 Red Lookout Butte (7-19- 2010)	5,443	Y	N	N	Y

\* See “**NOTE**”, above, under “1.” Is depicted as “2-74L” on March 1980 map; as “2-78L” on a Burns District work map (Vale District received a copy on May 12, 2009).

## H-6300-1-WILDERNESS INVENTORY MAINTENANCE IN BLM OREGON/WASHINGTON

### APPENDIX B – INVENTORY AREA EVALUATION

#### Evaluation of Current Conditions:

- 1) Document and review the existing BLM wilderness inventory findings on file, if available, regarding the presence or absence of individual wilderness characteristics, using Form 1, below.
- 2) Consider relevant information regarding current conditions available in the office to identify and describe any changes to the existing information (use interdisciplinary (ID) team knowledge, aerial photographs, field observations, maps, etc.), and document your findings on Form 2, below.

When Citizen Information has been submitted regarding wilderness characteristics, document the submitted materials including: date of Submission; Name of District(s) and Field Office(s) Affected; Type of material Submitted (e.g. narrative, map, and photos). Evaluate any submitted citizen information regarding the validity of proposed boundaries of the unit(s), the existence of roads and other boundary features, the size of the unit(s), and the presence or absence of wilderness characteristics based on relevant information available in the office (prior BLM inventories, ID team knowledge, aerial photographs, field observations, maps, etc.)

Conduct field reviews as necessary to verify information and to ascertain current conditions. Reach conclusions on current conditions including boundaries, size of areas and presence or absence of wilderness characteristics. Fully explain the basis for each conclusion on form 2, including any critical differences between BLM and citizen information.

Document your findings regarding current conditions for each inventoried area. Describe how the present conditions are similar to, or have changed from, the conditions documented in the original wilderness inventory. Document your findings on Form 2 for each inventory area. Cite to or attach data considered, including photographs, maps, GIS layers, field trip notes, project files, *etc.*

## **FORM 2 -- DOCUMENTATION OF CURRENT WILDERNESS INVENTORY CONDITIONS**

**Unit Number/Name:** OR-036-048 -- Red Lookout Butte

**NOTE:** This wilderness characteristics (WC) inventory unit OR-036-048 includes public lands located within both the Vale and Burns BLM districts. This current WC inventory maintenance for this unit is the result of BLM national guidance being re-issued for conducting WC inventory since this inventory unit had inventory maintenance completed on it with a BLM Vale District finding dated July 19, 2010.

**Description of Current Conditions:** [Include land ownership, location, topography, vegetation features and summary of major human uses/activities.]

### **1. Is the unit of sufficient size?**

Yes   X                        No                     

**Description:** Refer to this inventory unit's associated Map 1 for its location. The current 5,443 acre unit was part of original inventory unit OR-03-08-26 of the later 1970's in Vale District, and as OR-02-74L which later was identified as 2-78L of Burns District.

OR-036-048 inventory unit is within both the Vale (5,007 acres) and Burns (436 acres) BLM districts. The current OR-036-048 inventory unit is smaller than the late 1970's unit because a utility right-of-way has since been established across the southern portion of what was the 1970's unit. The unit is bounded by BLM roads (including 6316-00) on the west and north sides, private property on the east side, and the large electric transmission line right-of-way corridor on its south side. The unit's boundary roads receive mechanical maintenance as needed to keep them passable on a regular and continuous (seasonal) basis. Two 40 acre and an 80 acre private inholdings are also features of the unit's boundary.

### **2. Is the unit in a natural condition?**

Yes   X                        No                                           N/A                     

**Description:** The topography is flat to gently rolling terrain with a somewhat rounded configuration of approximately 3 miles in width and height. Vegetation is predominately sage brush and both native and non-native grasses.

See this unit's associated Map 1 for location of human imprints. There are 2.8 miles of 2 primitive motorized trails (MPTs), 2.9 miles of rangeland fence, and 2.1 total miles of two branches of a pipeline system with 4 troughs. The unit exhibits a near-natural appearing condition throughout because the human imprints are widely dispersed from

one another and the rangeland fence and MPTs generally blend in with the unit's vegetation and rolling topography. The unit appears to be affected primarily by the forces of nature with the imprint of humans substantially unnoticeable to the average visitor.

**3. Does the unit have outstanding opportunities for solitude?**

Yes \_\_\_\_\_ No  X  N/A \_\_\_\_\_

**Description:** The unit is approximately 3 miles in width and length.. The unit's limited topographic features and the lack of vegetative screening would not provide a visitor outstanding opportunities to experience a sense of seclusion. Also, a substantial unavoidable sight outside but abutting the unit -- which detracts from a sense of solitude inside portions of the unit -- is the high standing power line within the inventory unit's southern boundary's utility corridor right-of-way. Based on these collective reasons, the unit does not provide outstanding opportunities for solitude.

**4. Does the unit have outstanding opportunities for primitive and unconfined recreation?**

Yes \_\_\_\_\_ No  X  N/A \_\_\_\_\_

**Description:** The primary opportunity for primitive and unconfined types of recreation is hunting of common game species (primarily deer and chukar). Other opportunities include activities such as hiking, backpacking, horseback riding, and photography. However, none these activities are outstanding because the unit does not possess unique or special sights, features or attractions to specifically draw visitors to the inventory unit.

**5. Does the unit have supplemental values?**

Yes  X  No \_\_\_\_\_ N/A \_\_\_\_\_

**Description:** Solitary Milkvetch, a BLM special status plant species, has been documented within the northwest area of the unit.



### Summary of Findings and Conclusion

Unit Name and Number: OR-036-048 – Red Lookout Butte

**Summary Results of Analysis:**

- 1. Does the area meet any of the size requirements?  Yes  No
- 2. Does the area appear to be natural?  Yes  No
- 3. Does the area offer outstanding opportunities for solitude or a primitive and unconfined type of recreation?  Yes  No  NA
- 4. Does the area have supplemental values?  Yes  No  NA

**Conclusion -- check one:**

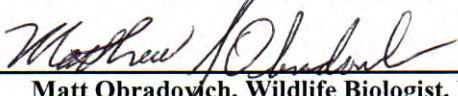
- The area, or a portion of the area, has wilderness character.
- The area does not have wilderness character.

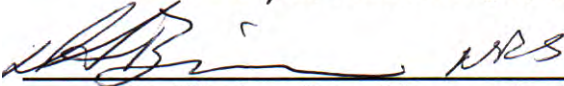
**Prepared by:**   
 Robert Alward, Wilderness Planner, contractor, Vale District

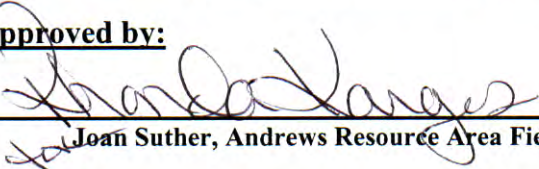
 4-17-2012  
 Eric Haakenson, Outdoor Recreation Specialist (Steens Wilderness Manager), Burns District

**Team Members:**

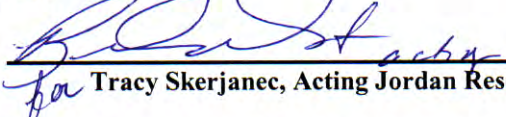
 23 APR 12  
 Dave Ward, Rangeland Management Specialist, Burns District Date

 04/17/2012  
 Matt Obradovich, Wildlife Biologist, Burns District Date

 17 APR 2012  
 Daryl Bingham, Natural Resource Specialist Fisheries Biologist, Burns District Date

**Approved by:**  4-23-12  
 Joan Suther, Andrews Resource Area Field Manager, Burns District Date

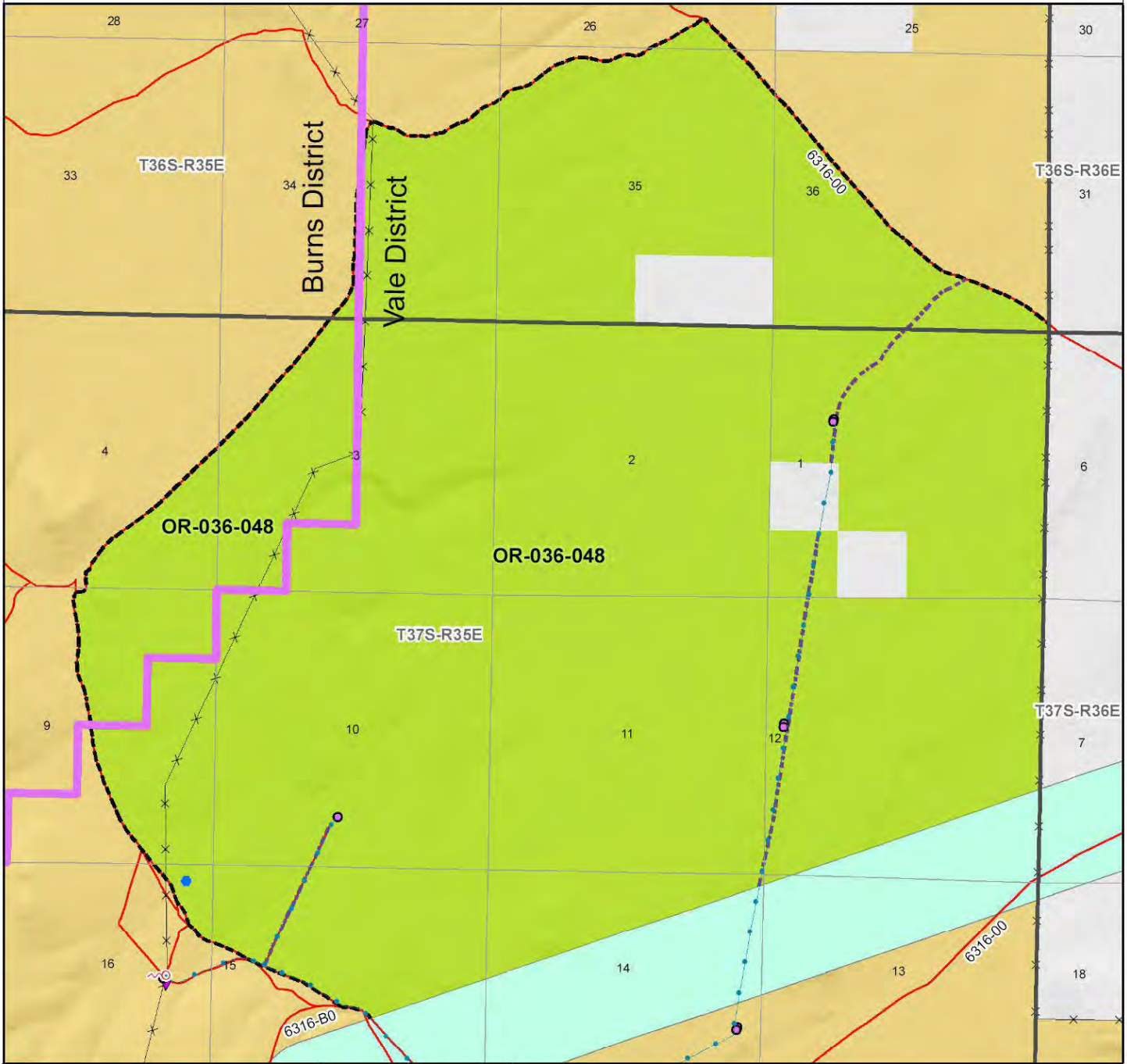
I approve the current OR-036-048 criteria findings, and as supported by the approved Form 2 findings of Vale District for this inventory unit dated July 19, 2010. (A copy included herein of the Form 2's Summary of Findings and Conclusion; the entire 2010 Form 2 is retained in Vale District wilderness characteristics inventory files.)

 4/20/12  
 for Tracy Skerjanec, Acting Jordan Resource Area Field Manager, Vale District Date

*This form documents information that constitutes an inventory finding on wilderness characteristics. It does not represent a formal land use allocation or a final agency decision subject to administrative remedies under either 43 CFR parts 4 or 1610.5-2.*

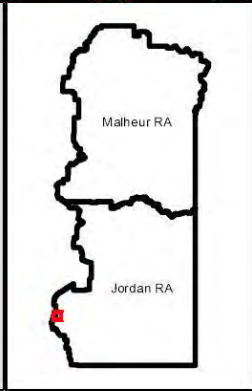
# Wilderness Characteristics - Overview

## Red Lookout Butte - OR-036-048 - Map 1 of 1



**Legend**

<ul style="list-style-type: none"> <li> Fence</li> <li> Developed Spring</li> <li> Wildlife Guzzler</li> <li> Earthen Reservoir</li> <li> Pipeline</li> <li> Trough</li> <li> Storage Tank</li> <li> Surface Mining Disturbance</li> <li> Sage Grouse Lek</li> <li> Special Status Plant</li> <li> BLM Wild Char Inventory Unit</li> <li> Wilderness Study Area</li> <li> Mineral Material Site</li> <li> Road/Utility Right-of-Way</li> <li> Major Water Body</li> </ul>	<p><b>Route Types - BLM Determination</b></p> <ul style="list-style-type: none"> <li> Boundary Road</li> <li> Motorized Primitive Trail (MPT)</li> <li> Discontinued Use</li> </ul> <p><b>Routes - Outside Wild Char Unit</b></p> <ul style="list-style-type: none"> <li> County</li> <li> Major Highway</li> <li> BLM Numbered &amp; Other Routes</li> </ul> <p><b>Land Ownership</b></p> <ul style="list-style-type: none"> <li> Bureau of Land Management</li> <li> State</li> <li> Private</li> <li> Other Federal Land</li> <li> District Boundary</li> </ul>
---	--



**U.S. DEPARTMENT OF THE INTERIOR**  
BUREAU OF LAND MANAGEMENT

**VALE DISTRICT**  
February 22, 2012

No warranty is made by the Bureau of Land Management as to the accuracy, reliability, or completeness of these data for individual or aggregate use with other data. Original data were compiled from various sources. This information may not meet National Map Accuracy Standards. This product was developed through digital means and may be updated without notification.

**--FINAL--**