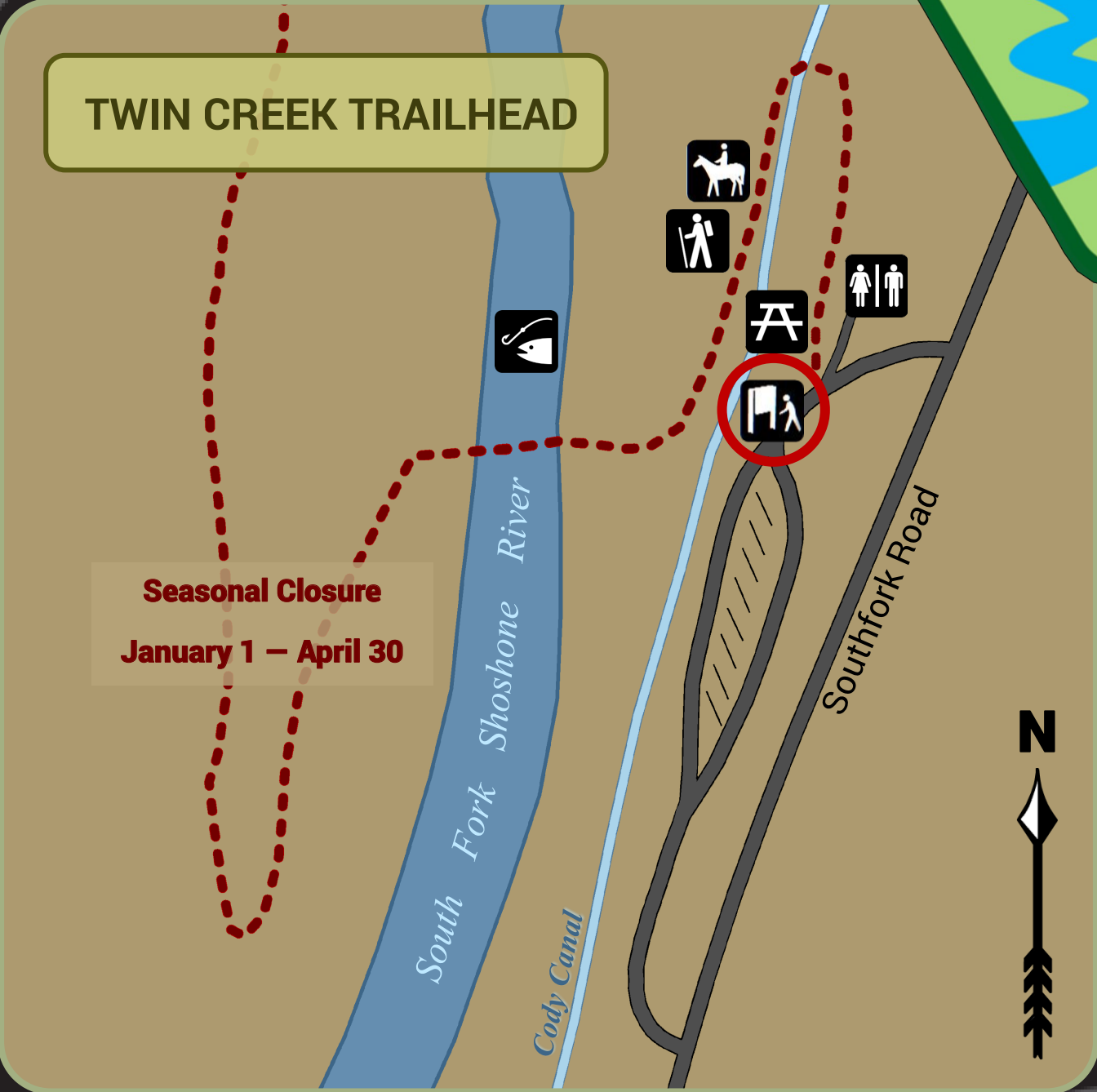


TWIN CREEK TRAIL

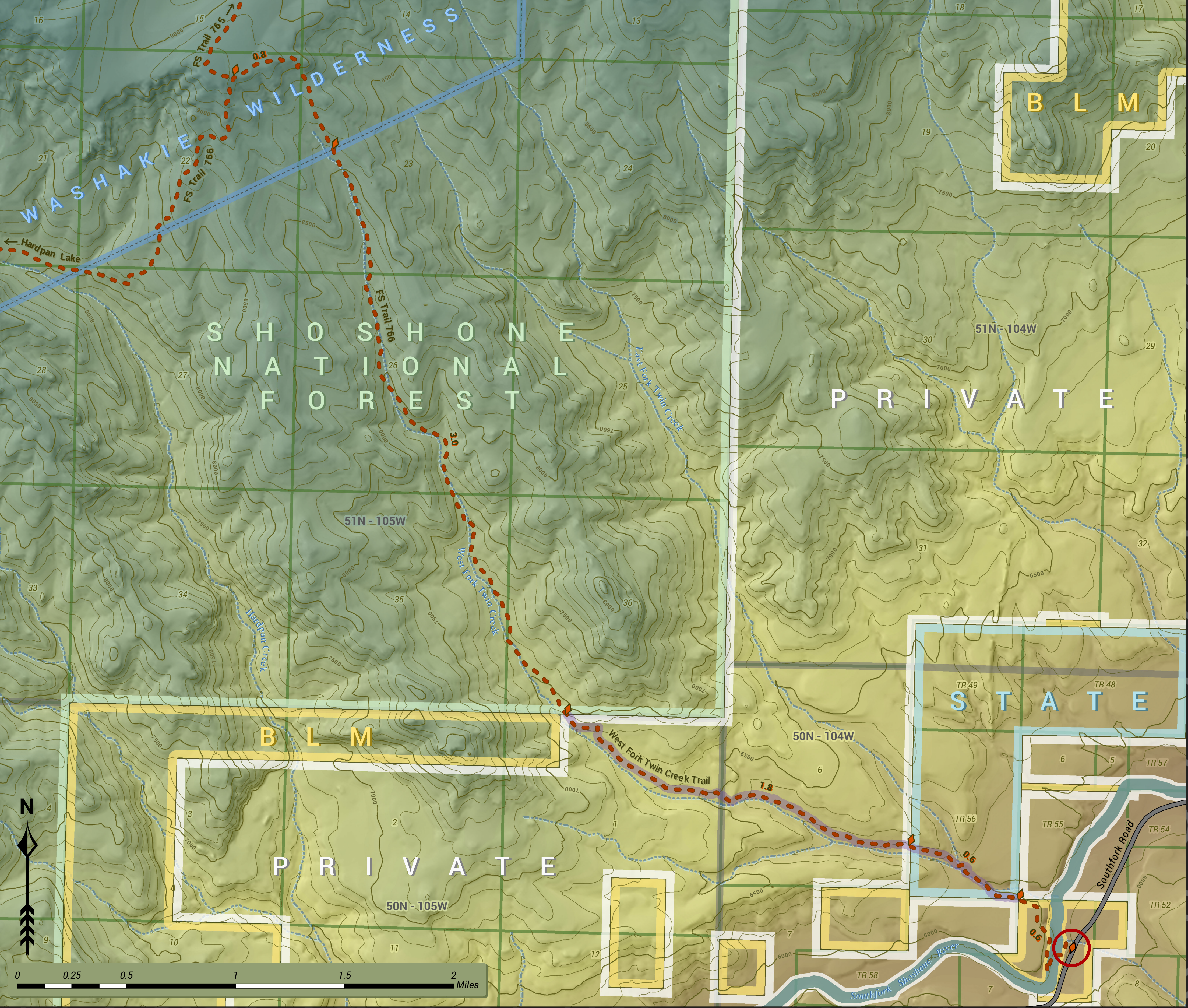


Use the QR code above or visit <https://www.blm.gov/maps/georeferenced-PDFs> to download a free, georeferenced map of Twin Creek Trail.

**Bureau of
Land Management**
Cody Field Office
1002 Blackburn Street
Cody, Wyoming 82414



- This site provides access to horseback riding and hiking along the West Fork of Twin Creek, fishing access for the South Fork of the Shoshone River, a picnic area, horse trailer parking, and a restroom.
- The elevation at the trailhead is 5,840 ft. and rises to 6,880 ft. in 3.1 miles at the Shoshone National Forest boundary. About 3.8 miles further (at 9,150 ft.), the trail diverges west toward Hardpan Lake (FS Trail 766) and north along Green Creek (FS Trail 765).
- Twin Creek Trail crosses BLM, State, Private, and National Forest land. Help keep access to public lands open by staying on the trail. **Do not trespass onto private land.**
- Deer, elk, antelope, moose, grizzly and black bear and mountain lion may be seen in the surrounding area. Be bear aware and bring bear spray.
- Twin Creek Trail is **closed January 1–April 30** to protect wintering big game.
- The trail crosses the South Fork of the Shoshone River. Cross with caution during spring runoff as conditions may be dangerous. Follow the route described below and do not cross through Cody canal.
- **No camping at trailhead.**
- This site is administered by the BLM. Please report site issues or suspicious activity to (307) 578-5900.



- | | | |
|------------------------|-------------------------|-------------|
| You Are Here | Information Kiosk | Township |
| BLM Land | Restroom | Section |
| Forest Service Land | Hiking Trail | Gravel Road |
| State Land | Equestrian Trail | |
| Private Land | Picnic Area | |
| Non-Motorized Trail | Fishing | |
| Public Access Easement | Mileage Between Markers | |

1:15,000
Datum: NAD 83
Projection: Lambert
Conformal Conic
Contour Interval: 100'