

Wilderness Inventory Unit Index of Documents
Tub Mountain OR-034-089, 10 total pages

Page 1: Index Cover Sheet

[Page 2: Form 1 – Documentation of BLM Wilderness Inventory: Findings on Record](#)

[Page 5: Form 2 – Documentation of Current Wilderness Inventory Conditions](#)

[Page 8: Form 2 – Summary of Findings and Conclusion](#)

[Page 9: Wilderness Characteristics Overview – Tub Mountain OR-034-089 Map 1 of 2](#)

[Page 10: Wilderness Characteristics-Land Treatments-Tub Mountain OR-034-089 Map 2 of 2](#)

Prepared by:
U.S. Department of the Interior
Bureau of Land Management
Vale District Office
100 Oregon Street
Vale, Oregon 97918



H-6300-1-WILDERNESS INVENTORY MAINTENANCE IN BLM OREGON/WASHINGTON

APPENDIX B – INVENTORY AREA EVALUATION

Evaluation of Current Conditions:

- 1) Document and review the existing BLM wilderness inventory findings on file, if available, regarding the presence or absence of individual wilderness characteristics, using Form 1, below.
- 2) Consider relevant information regarding current conditions available in the office to identify and describe any changes to the existing information (use interdisciplinary (ID) team knowledge, aerial photographs, field observations, maps, etc.), and document your findings on Form 2, below.

When Citizen Information has been submitted regarding wilderness characteristics, document the submitted materials including: date of Submission; Name of District(s) and Field Office(s) Affected; Type of material Submitted (e.g. narrative, map, photo). Evaluate any submitted citizen information regarding the validity of proposed boundaries of the unit(s), the existence of roads and other boundary features, the size of the unit(s), and the presence or absence of wilderness characteristics based on relevant information available in the office (prior BLM inventories, ID team knowledge, aerial photographs, field observations, maps, etc.)

Conduct field reviews as necessary to verify information and to ascertain current conditions. Reach conclusions on current conditions including boundaries, size of areas and presence or absence of wilderness characteristics. Fully explain the basis for each conclusion on form 2, including any critical differences between BLM and citizen information.

Document your findings regarding current conditions for each inventoried area. Describe how the present conditions are similar to, or have changed from, the conditions documented in the original wilderness inventory. Document your findings on Form 2 for each inventory area. Cite to or attach data considered, including photographs, maps, GIS layers, field trip notes, project files, *etc.*

Year: 2010 Unit Number/Name: OR-034-089 -- Tub Mountain

**FORM 1 -- DOCUMENTATION OF BLM WILDERNESS INVENTORY
FINDINGS ON RECORD**

1. Is there existing BLM wilderness inventory information on all or part of this area?

Yes X No _____ (If yes, and if more than one unit is within the area, list the names of those units.):

A.) Inventory Source(s) -- (X) Denotes all applicable BLM Inventory files, printed maps, or published BLM Decision documents with information pertaining to this unit.

Wilderness Inventories

- **(X)**1978 – BLM Wilderness Inventory Unit OR-03-01-06–Tub Mountain (unpublished BLM document in case files)
- **()** April 1979 – *Wilderness -- Proposed Initial Inventory – Roadless Areas and Islands Which Clearly Do Not have Wilderness Characteristics, Oregon and Washington*

Wilderness Decision Documents

- **()** August 1979 – *Wilderness Review – Initial Inventory, Final Decision on Public Lands Obviously Lacking Wilderness Characteristics and Announcement of Public Lands to be Intensively Inventoried for Wilderness Characteristics, Oregon and Washington* (green document)
- **()** October 1979 – *Wilderness Review – Intensive Inventory - Oregon, Proposed Decision on the Intensive Wilderness Inventory of Selected Areas* (grey document)
- **()** March 1980 – *Wilderness Review – Intensive Inventory; Final Decisions on 30 Selected Units in Southeast Oregon and Proposed Decisions on Other Intensively Inventoried Units in Oregon and Washington* (orange document)
- **()** November 1980 - *Wilderness Inventory – Oregon and Washington, Final Intensive Inventory Decisions* (brown document)
- **()** November 1981 *Stateline Intensive Wilderness Inventory Final Decision, Oregon, Idaho, Nevada, Utah* (tan document)

B.) Inventory Unit Name(s)/Number(s)
BLM OR-03-01-06, Tub Mountain

C.) Map Name(s)/Number(s)

- () Final Decision – Initial Wilderness Inventory Map, August 1979, Oregon
- () Proposed Decision -- Intensive Wilderness Inventory of Selected Areas Map, October 1979, Oregon
- () Intensive Wilderness Inventory Map, March 1980, Oregon
- () Intensive Wilderness Inventory --Final Decisions Map, November 1980, Oregon
- () November, 1981 *Stateline Intensive Wilderness Inventory Final Decision, Oregon, Idaho, Nevada, Utah* (tan document)

D.) BLM District(s)/Field Office(s)

Vale District/Malheur Resource Area

2. BLM Inventory Findings on Record

(Existing inventory information regarding wilderness characteristics (if more than one BLM inventory unit is associated with the area, list each unit and answer each question individually for each inventory unit):

Inventory Source: See above.

Unit#/Name	Size (historic acres)	Natural Condition? Y/N	Outstanding Solitude? Y/N	Outstanding Primitive & Unconfined Recreation? Y/N	Supplemental Values? Y/N
OR-03-01-06 Tub Mountain	4,980	*	*	*	*
TOTAL	4,980				

* -- These criteria were not addressed during the inventory of this unit since the unit did not meet size criteria.

H-6300-1-WILDERNESS INVENTORY MAINTENANCE IN BLM OREGON/WASHINGTON

APPENDIX B – INVENTORY AREA EVALUATION

Evaluation of Current Conditions:

- 1) Document and review the existing BLM wilderness inventory findings on file, if available, regarding the presence or absence of individual wilderness characteristics, using Form 1, below.
- 2) Consider relevant information regarding current conditions available in the office to identify and describe any changes to the existing information (use interdisciplinary (ID) team knowledge, aerial photographs, field observations, maps, etc.), and document your findings on Form 2, below.

When Citizen Information has been submitted regarding wilderness characteristics, document the submitted materials including: date of Submission; Name of District(s) and Field Office(s) Affected; Type of material Submitted (e.g. narrative, map, photo). Evaluate any submitted citizen information regarding the validity of proposed boundaries of the unit(s), the existence of roads and other boundary features, the size of the unit(s), and the presence or absence of wilderness characteristics based on relevant information available in the office (prior BLM inventories, ID team knowledge, aerial photographs, field observations, maps, etc.)

Conduct field reviews as necessary to verify information and to ascertain current conditions. Reach conclusions on current conditions including boundaries, size of areas and presence or absence of wilderness characteristics. Fully explain the basis for each conclusion on form 2, including any critical differences between BLM and citizen information.

Document your findings regarding current conditions for each inventoried area. Describe how the present conditions are similar to, or have changed from, the conditions documented in the original wilderness inventory. Document your findings on Form 2 for each inventory area. Cite to or attach data considered, including photographs, maps, GIS layers, field trip notes, project files, *etc.*

FORM 2 -- DOCUMENTATION OF CURRENT WILDERNESS INVENTORY CONDITIONS

Unit Number/Name: OR-034-089 -- Tub Mountain

Description of Current Conditions: [Include land ownership, location, topography, vegetation features and summary of major human uses/activities.]

1. Is the unit of sufficient size?

Yes X No

Description: Refer to this inventory unit's associated Map 1 for its location. The unit has 6,301 acres of public land. The unit is larger than what was identified by BLM in 1978 due to a then identified boundary road segment has changed status to a motorized primitive trail (MPT) in the current unit's northwest sector, because no known mechanical maintenance has been performed on it and with BLM presently not intending to conduct such maintenance on the route in the foreseeable future to provide for relatively regular and continuous use.

The boundaries of OR-034-089 are County road 751 on its west side, County road 906 on its north side, BLM road 7365-00 on its east side, and BLM road 7365-0-B0 on its south side. Boundary roads are mechanically maintained as required to provide for relatively regular and continuous use.

2. Is the unit in a natural condition?

Yes X No N/A

Description: Within the unit's approximate west half is Tub Mountain, the highest feature within the unit. The rest of the unit is dominated by lower-profiled rolling hills and multidirectional drainage patterns flowing from within the unit's interior to its boundaries. Elevations range from 2,500 to 3,440 feet. The entire unit has been wildfire burned three times between 1986 through 2006. Present vegetation is predominately a mix of both non-native and native grasses and remnant pockets of sagebrush.

Refer to this unit's associated Map 1 and Map 2 for human imprints. There are 5.5 miles of 3 MPTs, 2 earthen reservoirs, remnants of one wildlife guzzler, and an approximate half acre site of visually observable altered surface from a dated mineral exploration project. A small fenced enclosure is located within section 19 (not displayed on Map 1 or Map 2). A mechanically widened strip (about 100 feet) along and abutting the unit's east, south, and most of the north boundary road's length -- serving as a wildfire break -- is apparent. There is a barely distinguishable remnant segment of an abandoned motorized vehicle route within the unit. There have been 5 land treatments from 1987 through 2006; all but one of them (an aerial seeding in the unit's approximate north half) are disc-drilled seedings in the unit's south half. In this south half are a few isolated, very small

acreages scattered along the unit's south and east boundary roads which still have visually contrasting evidence of the plowed disc seedings; otherwise, no visual contrast of seedings is apparent to the average visitor. None of these imprints, individually or in sum, affect the unit to an extent to preclude it from appearing – overall -- to be affected primarily by the forces of nature with the imprint of humans substantially unnoticeable to the average visitor.

3. Does the unit have outstanding opportunities for solitude?

Yes _____ No X N/A _____

Description: The unit has insufficient vegetative cover for screening between visitors to provide for outstanding opportunities for solitude. The unit's configuration is nearly a 3.0 mile square. While terrain features allow a visitor to experience a sense of being isolated, this is substantially limited to a small central core area of the unit. The experience is not outstanding due to the restricted size of the core area and beyond which – and extending to the unit's boundary roads -- the unit's terrain is predominately too low profiled, slopes mostly toward the boundary roads, and/or is too close to the boundary roads to provide a visitor sufficient topographic screening for outstanding opportunities for solitude.

4. Does the unit have outstanding opportunities for primitive and unconfined recreation?

Yes _____ No X N/A _____

Description: The primary recreation is hunting of common game species (primarily deer, and chukar) and associated hiking. The unit possesses no special or unique features which would draw visitors to it. Individually or in combination, the activities do not provide outstanding opportunities for primitive and unconfined recreation.

5. Does the unit have supplemental values?

Yes X No _____ N/A _____

Description: The unit's west boundary road is the same route as the congressionally designated National Historic Oregon Trail. Respectively, a small portion of the Trail's corridor setting is within the western approximate third of the inventory unit (there are no known traces of the traveled trail, itself, within the inventory unit) and is included in BLM Vale District's administratively designated Tub Mountain segment of the National Historic Oregon Trail Area of Critical Environmental Concern (not displayed on Map 1 or Map 2).

A site possessing *Stanleya confertiflora*, Oregon princesplume– a BLM special status plant species – is within the unit.

Summary of Findings and Conclusion

Unit Name and Number: OR-034-089 -- Tub Mountain

Summary Results of Analysis:

- 1. Does the area meet any of the size requirements? Yes No
- 2. Does the area appear to be natural? Yes No
- 3. Does the area offer outstanding opportunities for solitude or a primitive and unconfined type of recreation? Yes No NA
- 4. Does the area have supplemental values? Yes No NA

Conclusion -- check one:

- The area, or a portion of the area, has wilderness character.
- The area does not have wilderness character.

Prepared by: Robert Alward
Robert Alward, Wilderness Planner contractor

Team Members:

<u>Garry Brown</u>	<u>12/6/10</u>
Garry Brown, Rangeland Management Specialist	Date
<u>Daniel Thomas</u>	<u>12/6/10</u>
Dan Thomas, Range Technician	Date
<u>Gillian Wigglesworth</u>	<u>12/6/10</u>
Gillian Wigglesworth, Botanist	Date
<u>Michelle Caviness</u>	<u>12/6/10</u>
Michelle Caviness, Wildlife Biologist	Date
<u>Diane H Pritchard</u>	<u>12/14/10</u>
Diane Pritchard, Archeologist	Date
<u>Eian Ray</u>	<u>12-6-10</u>
Eian Ray, GIS Specialist, contractor	Date
<u>Brent Grasty</u>	<u>12/5/10</u>
Brent Grasty, GIS Coordinator	Date

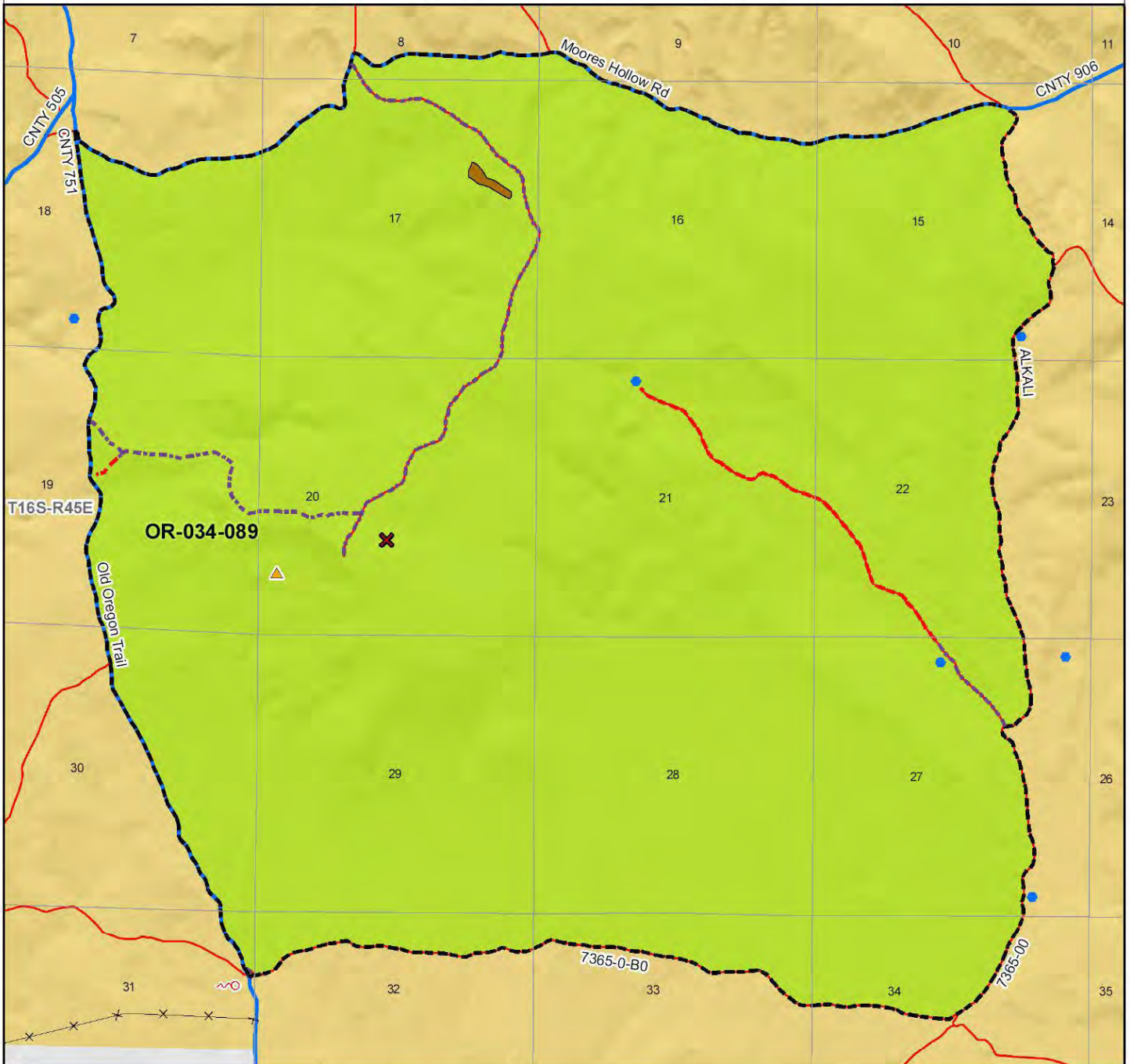
Approved by:

Pat Ryan 12/15/10
Pat Ryan, Malheur Resource Area Field Manager Date

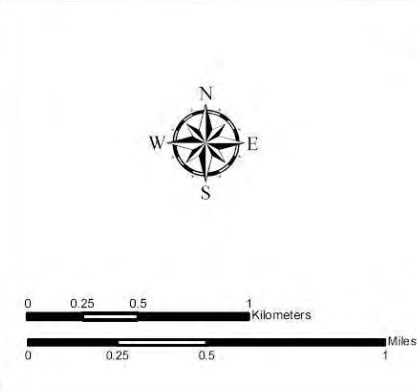
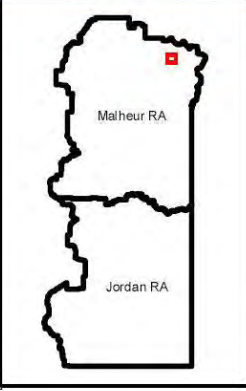
This form documents information that constitutes an inventory finding on wilderness characteristics. It does not represent a formal land use allocation or a final agency decision subject to administrative remedies under either 43 CFR parts 4 or 1610.5-2.

Wilderness Characteristics - Overview

Tub Mountain - OR-034-089 - Map 1 of 2



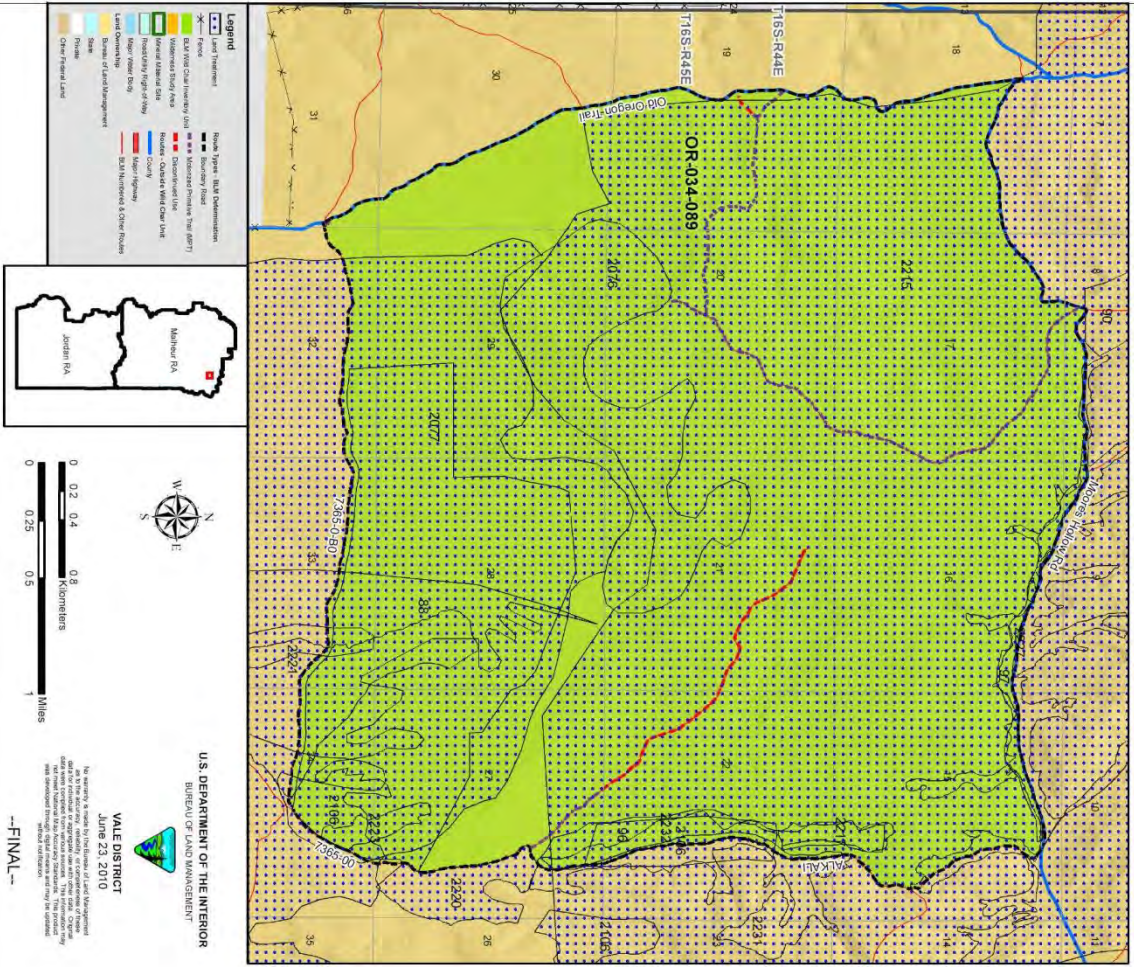
Legend	
	Developed Spring
	Wildlife Guzzler
	Earthen Reservoir
	Pipeline
	Trough
	Fence
	Storage Tank
	Surface Mining Disturbance
	Sage Grouse Lek
	Special Status Plant
	BLM Wild Char Inventory Unit
	Wilderness Study Area
	Mineral Material Site
	Road/Utility Right-of-Way
	Major Water Body
	Route Types - BLM Determination Boundary Road
	Motorized Primitive Trail (MPT)
	Routes - Outside Wild Char Unit Discontinued Use
	County
	Major Highway
	BLM Numbered & Other Routes
	Land Ownership Bureau of Land Management
	State
	Private
	Other Federal Land



U.S. DEPARTMENT OF THE INTERIOR
 BUREAU OF LAND MANAGEMENT

VALE DISTRICT
 June 23, 2010
No warranty is made by the Bureau of Land Management as to the accuracy, reliability, or completeness of these data for individual or aggregate use with other data. Original data were compiled from various sources. This information may not meet National Map Accuracy Standards. This product was developed through digital means and may be updated without notification.
--FINAL--

Wilderness Characteristics - Land Treatments
Tub Mountain - OR-034-089 - Map 2 of 2



Legend

- Land Treatment: Mud Springs Fire ESR (light green), Jackson Fire Rehab (yellow), etc.
- Boundary: 1/4 Section Boundary (black dashed), etc.
- Road: Jackson Highway (red), etc.
- Water: Jackson Creek (blue), etc.

Map Information

U.S. DEPARTMENT OF THE INTERIOR
 BUREAU OF LAND MANAGEMENT
 VALE DISTRICT
 June 23, 2010

Scale: 0 to 1 Miles, 0 to 1 Kilometers

--FINAL--

Wilderness Characteristics - Land Treatments
Tub Mountain - OR-034-089 - Map 2 of 2

OBJECTID*	NAME	TREATMENT TYPE	SEED GROUP	DATE
88	MUD SPRINGS FIRE ESR	Drill Seeding	Non-native Grasses	20061101
90	MUD SPRINGS FIRE ESR	Drill Seeding	Native Grasses	20061101
96	MUD SPRINGS FIRE ESR	Drill Seeding	Non-native Grasses	20061101
97	MUD SPRINGS FIRE ESR	Drill Seeding	Non-native Grasses	20061101
2076	TUB MOUNTAIN REHAB	Drill Seeding	Non-native Grasses	1987
2077	TUB MOUNTAIN REHAB	Drill Seeding	Non-native Forbs	1987
2106	TUB MOUNTAIN FIRE REHAB	Drill Seeding	A mix of non-native gr	1988
2215	JACKSON FIRE REHAB	Aerial Seeding	Shrubs	20010101
2217	JACKSON FIRE REHAB	Drill Seeding	Unknown	20010101
2220	JACKSON FIRE REHAB	Drill Seeding	Unknown	20010101
2221	JACKSON FIRE REHAB	Drill Seeding	Unknown	20010101
2223	JACKSON FIRE REHAB	Drill Seeding	Unknown	20010101
2227	JACKSON FIRE REHAB	Drill Seeding	Unknown	20010101
2231	JACKSON FIRE REHAB	Drill Seeding	Unknown	20010101
2232	JACKSON FIRE REHAB	Drill Seeding	Unknown	20010101

Note: The Land Treatments represented by many blue dots on the map to the left are labeled with the treatments OBJECTIDs listed in the first field of the Land Treatments table shown above. Multiple types of treatments may have been applied to the same area. For example, one treatment area may have been plowed and drill seeded - a record is shown in the table for each type of treatment.