

Wilderness Inventory Unit Index of Documents
Tourist Court OR-036-023, 9 total pages

Page 1: Index Cover Sheet

[Page 2: Form 1 – Documentation of BLM Wilderness Inventory: Findings on Record](#)

[Page 5: Form 2 – Documentation of Current Wilderness Inventory Conditions](#)

[Page 8: Form 2 – Summary of Findings and Conclusion](#)

[Page 9: Wilderness Characteristics Overview–Tourist Court OR-036-023 Map 1](#)

Prepared by:
U.S. Department of the Interior
Bureau of Land Management
Vale District Office
100 Oregon Street
Vale, Oregon 97918



H-6300-1-WILDERNESS INVENTORY MAINTENANCE IN BLM OREGON/WASHINGTON

APPENDIX B – INVENTORY AREA EVALUATION

Evaluation of Current Conditions:

- 1) Document and review the existing BLM wilderness inventory findings on file, if available, regarding the presence or absence of individual wilderness characteristics, using Form 1, below.
- 2) Consider relevant information regarding current conditions available in the office to identify and describe any changes to the existing information (use interdisciplinary (ID) team knowledge, aerial photographs, field observations, maps, etc.), and document your findings on Form 2, below.

When Citizen Information has been submitted regarding wilderness characteristics, document the submitted materials including: date of Submission; Name of District(s) and Field Office(s) Affected; Type of material Submitted (e.g. narrative, map, photo). Evaluate any submitted citizen information regarding the validity of proposed boundaries of the unit(s), the existence of roads and other boundary features, the size of the unit(s), and the presence or absence of wilderness characteristics based on relevant information available in the office (prior BLM inventories, ID team knowledge, aerial photographs, field observations, maps, etc.)

Conduct field reviews as necessary to verify information and to ascertain current conditions. Reach conclusions on current conditions including boundaries, size of areas and presence or absence of wilderness characteristics. Fully explain the basis for each conclusion on form 2, including any critical differences between BLM and citizen information.

Document your findings regarding current conditions for each inventoried area. Describe how the present conditions are similar to, or have changed from, the conditions documented in the original wilderness inventory. Document your findings on Form 2 for each inventory area. Cite to or attach data considered, including photographs, maps, GIS layers, field trip notes, project files, *etc.*

Year: 2010 **Unit Number/Name:** OR-036-023 -- Tourist Court

**FORM 1 -- DOCUMENTATION OF BLM WILDERNESS INVENTORY
FINDINGS ON RECORD**

1. Is there existing BLM wilderness inventory information on all or part of this area?

Yes No (If yes, and if more than one unit is within the area, list the names of those units.):

A.) Inventory Source(s) -- (X) Denotes all applicable BLM Inventory files, printed maps, or published BLM Decision documents with information pertaining to this unit.

Wilderness Inventories

- (X) 1978 – BLM Wilderness Inventory Unit 3-115 of OR-03-08-10 Tourist Court (unpublished BLM documents stored in Vale District case files)
- (X) April 1979 – *Wilderness -- Proposed Initial Inventory – Roadless Areas and Islands Which Clearly Do Not have Wilderness Characteristics, Oregon and Washington*

Wilderness Decision Documents

- (X) August 1979 – *Wilderness Review – Initial Inventory, Final Decision on Public Lands Obviously Lacking Wilderness Characteristics and Announcement of Public Lands to be Intensively Inventoried for Wilderness Characteristics, Oregon and Washington* (green document)
- () October 1979 – *Wilderness Review – Intensive Inventory - Oregon, Proposed Decision on the Intensive Wilderness Inventory of Selected Areas* (grey document).
- () March 1980 – *Wilderness Review – Intensive Inventory; Final Decisions on 30 Selected Units in Southeast Oregon and Proposed Decisions on Other Intensively Inventoried Units in Oregon and Washington* (orange document)
- () November 1980 - *Wilderness Inventory – Oregon and Washington, Final Intensive Inventory Decisions* (brown document)
- () November 1981 *Stateline Intensive Wilderness Inventory Final Decision, Oregon, Idaho, Nevada, Utah* (tan document).

B.) Inventory Unit Name(s)/Number(s)

BLM 3-115 of OR-03-08-10 Tourist Court

C.) Map Name(s)/Number(s)

- Final Decision – Initial Wilderness Inventory Map, August 1979, Oregon
- Proposed Decision -- Intensive Wilderness Inventory of Selected Areas Map, October 1979, Oregon
- Intensive Wilderness Inventory Map, March 1980, Oregon
- Intensive Wilderness Inventory --Final Decisions Map, November 1980, Oregon.
- November, 1981 *Stateline Intensive Wilderness Inventory Final Decision, Oregon, Idaho, Nevada, Utah* (tan document).

D.) BLM District(s)/Field Office(s)

Vale District Office Jordan Field Office

2. BLM Inventory Findings on Record

(Existing inventory information regarding wilderness characteristics (if more than one BLM inventory unit is associated with the area, list each unit and answer each question individually for each inventory unit):

Inventory Source: See above.

Unit# / Name	Size (historic acres)	Natural Condition? Y/N	Outstanding Solitude? Y/N	Outstanding Primitive & Unconfined Recreation? Y/N	Supplemental Values? Y/N
3-115 of OR-03-08-10 Tourist Court	9,820	Y	N	N	*
TOTAL	9,820				

* These criteria were not addressed during the inventory of this unit.

H-6300-1-WILDERNESS INVENTORY MAINTENANCE IN BLM OREGON/WASHINGTON

APPENDIX B – INVENTORY AREA EVALUATION

Evaluation of Current Conditions:

- 1) Document and review the existing BLM wilderness inventory findings on file, if available, regarding the presence or absence of individual wilderness characteristics, using Form 1, below.
- 2) Consider relevant information regarding current conditions available in the office to identify and describe any changes to the existing information (use interdisciplinary (ID) team knowledge, aerial photographs, field observations, maps, etc.), and document your findings on Form 2, below.

When Citizen Information has been submitted regarding wilderness characteristics, document the submitted materials including: date of Submission; Name of District(s) and Field Office(s) Affected; Type of material Submitted (e.g. narrative, map, photo). Evaluate any submitted citizen information regarding the validity of proposed boundaries of the unit(s), the existence of roads and other boundary features, the size of the unit(s), and the presence or absence of wilderness characteristics based on relevant information available in the office (prior BLM inventories, ID team knowledge, aerial photographs, field observations, maps, etc.)

Conduct field reviews as necessary to verify information and to ascertain current conditions. Reach conclusions on current conditions including boundaries, size of areas and presence or absence of wilderness characteristics. Fully explain the basis for each conclusion on form 2, including any critical differences between BLM and citizen information.

Document your findings regarding current conditions for each inventoried area. Describe how the present conditions are similar to, or have changed from, the conditions documented in the original wilderness inventory. Document your findings on Form 2 for each inventory area. Cite to or attach data considered, including photographs, maps, GIS layers, field trip notes, project files, *etc.*

FORM 2 -- DOCUMENTATION OF CURRENT WILDERNESS INVENTORY CONDITIONS

Unit Number/Name: OR-036-023 -- Tourist Court

Description of Current Conditions: [Include land ownership, location, topography, vegetation features and summary of major human uses/activities.]

1. Is the unit of sufficient size?

Yes No

Description: Refer to this inventory unit's associated Map 1 for its location. The boundary of the 9335 acre unit is nearly the same as the BLM inventory unit 3-115 of OR-03-08-10 during the 1970's meeting the size criteria. The only difference being the exclusion of utility corridor right-of-way widths for U.S. Highway 95 and State Highway 78 and of three mineral material site right-of ways associated with those highways. Acreage for unit OR-036-023 in Form 2 is calculated from BLM GIS information. The remaining 483 acre difference from Form 1 is the acreage contained within the utility corridor and mineral material site right-of-ways. The unit is bounded on its southwesterly side by BLM road 6314-0-100, on its northwesterly side by a non-numbered BLM road separating the unit from the Palomino Hills WSA (OR-3-114), and on its northeastern and eastern side by a utility corridor right-of-way, three mineral material site right-of-ways and one private land parcel. The natural-surfaced roads are in reasonably good passable condition when not water saturated, receiving a measure of mechanical maintenance as needed to keep them passable for regular and continuous (seasonal) basis.

2. Is the unit in a natural condition?

Yes No N/A

Description: The unit is dominated by low profiled rolling hills and extended nearly flat terrain. Elevations range from 3,900 feet to 4,645 feet, with the upper elevations located mostly in the unit's northwest sector. The unit's small drainages flow mostly toward the northeast and southeast into Palomino Creek and Dought Creek respectively. All drainage from these streams eventually flows eastward to Crooked Creek. Vegetation consists predominately of big and low sagebrush with both native and non-native grass species. Some of the more alkali prone acreages of this parcel also contain small patches or isolated islands of salt-desert shrub species.

Refer to this inventory unit's associated Map 1 and Map 2 for its human developments. They include 1.7 miles of two motorized primitive trail (MPT). These consist of a 1.6 mile MPT that traverses the unit's in its northeast corner and a second MPT of 0.1 mile that extends from a mineral material site located in the utility corridor right-of-way located on the unit's northeastern boundary. The unit is also affected by a small portion of the Sheepshead-Heath Creek Horse Herd Management Areas. Given its size relative to the minimal evidence of man-made developments, the unit appears to be affected primarily by the forces of nature with the imprint of humans substantially unnoticeable to the average visitor.

3. Does the unit have outstanding opportunities for solitude?

Yes _____ No X N/A _____

Description: The character of the inventory unit has not changed since the 1970's. The unit approaches triangular in shape, with its narrowest area in its southeast corner near Highway 95 and its widest breadth being about 4.5 miles. Length varies throughout the unit with the southwest boundary about 6.0 miles and grades to the northeast boundary to about 4.0 miles in length. The sights and sounds emanating from traffic on U.S. Highway 95 and 78 located along the northeast and eastern boundaries also detract from opportunities for solitude along much of the western edge of unit. As a result of the area's size relative to its shape, the absence of vegetative screening, and the lack of diversity in relief, there is no outstanding opportunities for solitude. BLM concludes that unit OR-036-023 does not provide outstanding opportunities for solitude.

4. Does the unit have outstanding opportunities for primitive and unconfined recreation?

Yes _____ No X N/A _____

Description: The most dominate dispersed recreation activity of the area is hunting of game species (primarily deer, chukar and antelope). Horseback riding and hiking are hunt-associated activities. A visitor may occasionally view wild horses within the unit. The unit is affected by a small portion of the Sheepshead Wild Horse Herd Management Area. While a less common and interesting viewing experience, wild horses are not considered to be an outstanding primitive and unconfined recreational experience. Recreational pursuits within the area, individually or collectively, are not outstanding in character or nature. BLM concludes that unit OR-036-023 does not provide outstanding opportunities for primitive and unconfined recreation.

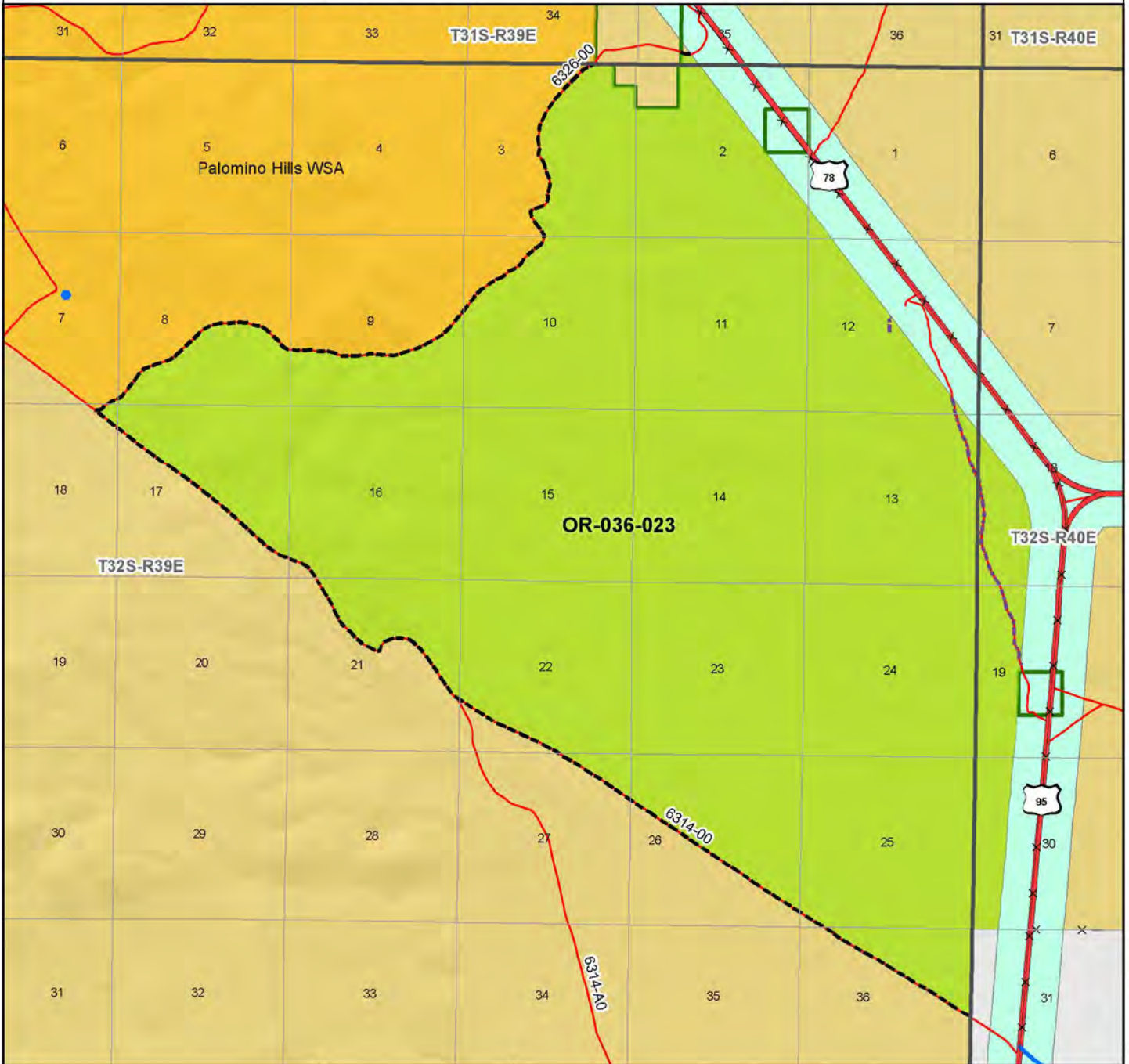
5. Does the unit have supplemental values?

Yes _____ No X N/A _____

Description:

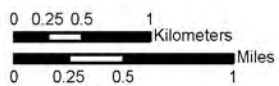
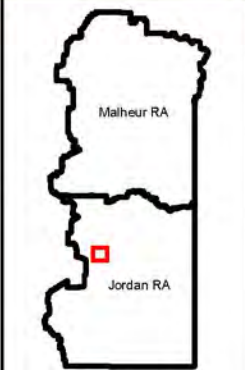
Wilderness Characteristics - Overview

Tourist Court - OR-036-023 - Map 1 of 1



Legend

- | | |
|---|--|
| <ul style="list-style-type: none"> Developed Spring Wildlife Guzzler Earthen Reservoir Pipeline Trough Fence Storage Tank Surface Mining Disturbance Sage Grouse Lek Special Status Plant BLM Wild Char Inventory Unit Wilderness Study Area Mineral Material Site Road/Utility Right-of-Way Major Water Body | <p>Route Types - BLM Determination</p> <ul style="list-style-type: none"> Boundary Road Motorized Primitive Trail (MPT) Discontinued Use <p>Routes - Outside Wild Char Unit</p> <ul style="list-style-type: none"> County Major Highway BLM Numbered & Other Routes <p>Land Ownership</p> <ul style="list-style-type: none"> Bureau of Land Management State Private Other Federal Land |
|---|--|



U.S. DEPARTMENT OF THE INTERIOR
BUREAU OF LAND MANAGEMENT



VALE DISTRICT
November 20, 2009

No warranty is made by the Bureau of Land Management as to the accuracy, reliability, or completeness of these data for individual or aggregate use with other data. Original data were compiled from various sources. This information may not meet National Map Accuracy Standards. This product was developed through digital means and may be updated without notification.

--FINAL--