

Wilderness Inventory Unit Index of Documents  
**Three Fingers Rock South OR-034-055, 20 total pages**

Page 1: Index Cover Sheet

[Page 2: Form 1 – Documentation of BLM Wilderness Inventory: Findings on Record](#)

[Page 5: Form 2 – Documentation of Current Wilderness Inventory Conditions](#)

[Page 10: Form 2 – Summary of Findings and Conclusion](#)

[Page 11: Wilderness Characteristics Overview – Three Fingers Rock South  
OR-034-055 Map 1 of 2](#)

[Page 12: Wilderness Characteristics-Land Treatments-Three Fingers Rock South  
OR-034-055 Map 2 of 2](#)

[Page 13: Wilderness Characteristics – BLM Photo Points – Three Fingers Rock South  
Map & Log](#)

[Page 14: OR-034-055 Three Fingers Rock South BLM Photos](#)

[Page 17: H-6300-1-Wilderness Inventory Maintenance in BLM Oregon/Washington  
Appendix C – Road\\* Analysis: BLM 034-RT26](#)

**Prepared by:**  
**U.S. Department of the Interior**  
**Bureau of Land Management**  
**Vale District Office**  
**100 Oregon Street**  
**Vale, Oregon 97918**



## **H-6300-1-WILDERNESS INVENTORY MAINTENANCE IN BLM OREGON/WASHINGTON**

### **APPENDIX B – INVENTORY AREA EVALUATION**

#### **Evaluation of Current Conditions:**

- 1) Document and review the existing BLM wilderness inventory findings on file, if available, regarding the presence or absence of individual wilderness characteristics, using Form 1, below.
- 2) Consider relevant information regarding current conditions available in the office to identify and describe any changes to the existing information (use interdisciplinary (ID) team knowledge, aerial photographs, field observations, maps, etc.), and document your findings on Form 2, below.

When Citizen Information has been submitted regarding wilderness characteristics, document the submitted materials including: date of Submission; Name of District(s) and Field Office(s) Affected; Type of material Submitted (e.g. narrative, map, photo). Evaluate any submitted citizen information regarding the validity of proposed boundaries of the unit(s), the existence of roads and other boundary features, the size of the unit(s), and the presence or absence of wilderness characteristics based on relevant information available in the office (prior BLM inventories, ID team knowledge, aerial photographs, field observations, maps, etc.)

Conduct field reviews as necessary to verify information and to ascertain current conditions. Reach conclusions on current conditions including boundaries, size of areas and presence or absence of wilderness characteristics. Fully explain the basis for each conclusion on form 2, including any critical differences between BLM and citizen information.

Document your findings regarding current conditions for each inventoried area. Describe how the present conditions are similar to, or have changed from, the conditions documented in the original wilderness inventory. Document your findings on Form 2 for each inventory area. Cite to or attach data considered, including photographs, maps, GIS layers, field trip notes, project files, *etc.*

**Year:** 2009      **Unit Number/Name:** OR-034-055 -- Three Fingers Rock South

**FORM 1 -- DOCUMENTATION OF BLM WILDERNESS INVENTORY FINDINGS ON RECORD**

**1. Is there existing BLM wilderness inventory information on all or part of this area?**

Yes  No  (If yes, and if more than one unit is within the area, list the names of those units.):

**A.) Inventory Source(s) -- (X) Denotes all applicable BLM Inventory files, printed maps, or published BLM Decision documents with information pertaining to this unit.**

**Wilderness Inventories**

- 1978 – 1980 --- BLM Wilderness Inventory Unit 3-78 of OR-03-05-33 Three Fingers Rock South (unpublished BLM document in case files)
- April 1979 – *Wilderness -- Proposed Initial Inventory – Roadless Areas and Islands Which Clearly Do Not have Wilderness Characteristics, Oregon and Washington*

**Wilderness Decision Documents**

- August 1979 – *Wilderness Review – Initial Inventory, Final Decision on Public Lands Obviously Lacking Wilderness Characteristics and Announcement of Public Lands to be Intensively Inventoried for Wilderness Characteristics, Oregon and Washington* (green document)
- October 1979 – *Wilderness Review – Intensive Inventory - Oregon, Proposed Decision on the Intensive Wilderness Inventory of Selected Areas* (grey document).
- March 1980 – *Wilderness Review – Intensive Inventory; Final Decisions on 30 Selected Units in Southeast Oregon and Proposed Decisions on Other Intensively Inventoried Units in Oregon and Washington* (orange document)
- November 1980 - *Wilderness Inventory – Oregon and Washington, Final Intensive Inventory Decisions* (brown document)
- November 1981 *Stateline Intensive Wilderness Inventory Final Decision, Oregon, Idaho, Nevada, Utah* (tan document).

**B.) Inventory Unit Name(s)/Number(s)**

BLM 3-78 of OR-03-05-33 Three Fingers Rock South.

**C.) Map Name(s)/Number(s)**

- Final Decision – Initial Wilderness Inventory Map, August 1979, Oregon
- Proposed Decision -- Intensive Wilderness Inventory of Selected Areas Map, October 1979, Oregon
- Intensive Wilderness Inventory Map, March 1980, Oregon
- Intensive Wilderness Inventory --Final Decisions Map, November 1980, Oregon.
- November, 1981 *Stateline Intensive Wilderness Inventory Final Decision, Oregon, Idaho, Nevada, Utah* (tan document).

**D.) BLM District(s)/Field Office(s)**

Vale District Office / Malheur Field Office

**2. BLM Inventory Findings on Record**

(Existing inventory information regarding wilderness characteristics (if more than one BLM inventory unit is associated with the area, list each unit and answer each question individually for each inventory unit):

**Inventory Source:** See above.

<b>Unit#/ Name</b>	<b>Size (historic acres)</b>	<b>Natural Condition? Y/N</b>	<b>Outstanding Solitude? Y/N</b>	<b>Outstanding Primitive &amp; Unconfined Recreation? Y/N</b>	<b>Supplemental Values? Y/N</b>
3-78 of OR-03-05- 33Three Fingers Rock South	7,440	N	*	*	*
<b>TOTAL</b>	7,440				

\*- These criteria were not specifically addressed in the inventory of this unit.

## **H-6300-1-WILDERNESS INVENTORY MAINTENANCE IN BLM OREGON/WASHINGTON**

### **APPENDIX B – INVENTORY AREA EVALUATION**

#### **Evaluation of Current Conditions:**

- 1) Document and review the existing BLM wilderness inventory findings on file, if available, regarding the presence or absence of individual wilderness characteristics, using Form 1, below.
- 2) Consider relevant information regarding current conditions available in the office to identify and describe any changes to the existing information (use interdisciplinary (ID) team knowledge, aerial photographs, field observations, maps, etc.), and document your findings on Form 2, below.

When Citizen Information has been submitted regarding wilderness characteristics, document the submitted materials including: date of Submission; Name of District(s) and Field Office(s) Affected; Type of material Submitted (e.g. narrative, map, photo). Evaluate any submitted citizen information regarding the validity of proposed boundaries of the unit(s), the existence of roads and other boundary features, the size of the unit(s), and the presence or absence of wilderness characteristics based on relevant information available in the office (prior BLM inventories, ID team knowledge, aerial photographs, field observations, maps, etc.)

Conduct field reviews as necessary to verify information and to ascertain current conditions. Reach conclusions on current conditions including boundaries, size of areas and presence or absence of wilderness characteristics. Fully explain the basis for each conclusion on form 2, including any critical differences between BLM and citizen information.

Document your findings regarding current conditions for each inventoried area. Describe how the present conditions are similar to, or have changed from, the conditions documented in the original wilderness inventory. Document your findings on Form 2 for each inventory area. Cite to or attach data considered, including photographs, maps, GIS layers, field trip notes, project files, *etc.*

## **FORM 2 -- DOCUMENTATION OF CURRENT WILDERNESS INVENTORY CONDITIONS**

**Unit Number/Name:** **OR-034-055 – Three Fingers Rock South**

**Note:** In February, 2004, the Vale District received from Oregon Natural Desert Association (ONDA) its evaluation of wilderness characteristics for its named 18,426 acre “Three Fingers Rock Proposed WSA”. For reference, a hard copy of ONDA’s proposal is retained in this unit’s file. Information provided by ONDA’s proposal was considered and incorporated as appropriate for this BLM Wilderness Characteristics Inventory maintenance. OR-034-055 represents only a portion of ONDA’s proposal. ONDA’s proposal includes basically two late 1970’s BLM inventory units (3-69 -- Three Fingers Rock North, and 3-78 -- Three Fingers Rock South), which, respectively, are currently associated with this OR-034-055 BLM unit and the present OR-034-056 BLM unit.

For BLM unit OR-034-055, differences between BLM and ONDA regarding inventory unit boundary features are that (A) unlike ONDA’s proposal, BLM concludes that BLM route 034-RT26 is a road (what ONDA identifies as its SC43 “way” – (i.e. what BLM identifies as a motorized primitive trail [MPT]), and (B) that ONDA’s WSA proposal indicates that the portion of its south/southwest boundary beyond (west of) its SC51a route as simply traversing open public land without following a qualifying boundary feature. BLM concludes that ONDA’s SC51a is a road and boundary feature (although ONDA identifies its SC51a as a “way” and also as a boundary feature of its proposed WSA). Additionally, BLM identifies (A) the southwestern-most boundary of OR-034-055 as BLM road 7306-0-00 (which is located further south than and generally parallels ONDA’s proposed southwest open terrain boundary); and, (B) the east boundary near OR-034-055’s southern reaches is a road which eventually junctions with the 7306-0-00 road. Refer to BLM’s associated Road Analysis form and associated Photo Points Map/Log and photos for 034-RT26 of this BLM inventory unit for additional documentation.

**Description of Current Conditions:** [Include land ownership, location, topography, vegetation features and summary of major human uses/activities.]

### **1. Is the unit of sufficient size?**

Yes   X   No       

**Description:** Refer to this BLM inventory unit’s associated Map 1 for its location. The unit has 8,253 acres of public land. The unit’s boundaries are the same as the BLM’s late 1970’s wilderness characteristics inventory. The variance in acreage from the late 1970’s is due to advanced techniques in technology over time for deriving more accurate acreage data. Boundaries consist of roads traversing public lands, included but not limited to 7306-0-00 and 034-RT26. The roads receive mechanical maintenance as needed to ensure their ability to provide for relatively regular and continuous use.

**2. Is the unit in a natural condition?**Yes  No  N/A 

**Description:** The unit consists of varied terrain, with its northwest sector possessing a north-south oriented ridgeline with some steep slopes, including Atkins Butte, and the southern portion of the unit being of generally less steep terrain associated with Long Gulch and some of its affiliated side drainages. The unit's northeast sector has lower profiled terrain than its northwest area, with connected hilltops and directionally varied short drainages branching from them. Elevations within the unit range from 3,200 feet at its northwest corner area to 4,117 feet of Atkins Butte. The vegetation is sagebrush and both native and non-native grasses.

Refer to this unit's associated Map 1 and Map 2 for human imprints. They include 6.1 miles of rangeland fence, 7.5 miles of 16 motorized primitive trails (MPTs), 3 earthen reservoirs, one functioning wildlife guzzler and scattered remnants of another deteriorated one, and several small sites of surface scarring from past extraction of a locatable mineral (picture jasper; only 3 sites are specifically labeled on Map 1). The majority of the MPTs are very short dead-ended spurs (less than about a half mile), branch from various boundary roads of the unit and often are associated with the dated extraction sites. There remains no visual contrast of either a 1969 or a 1986 drilled disc seeding of non-native grasses. The entire unit was affected by various vegetation treatments following the 2002 Adkins Fire. There are no apparent visual contrasts associated with 2002 bitterbrush plantings, harrowed mixes of shrubs, or of aerial seedings of native grasses.

There remains some scattered remnant visual evidence associated with 3 primary 2002 sinuous-shaped disc-drilled native grass seedings (approximately 200, 800 and 900 acres);. They are located within the northwest, northeast and southwest sectors of the inventory unit. However, approximately 500 acres (located primarily in sections 27 and 28 of the inventory unit) of the 800 acre Atkins disc-drilled seeding of native species (assigned Object Code 2260) within the unit's southwestern sector is still so visually linear contrasting that this area of the unit is not in a natural condition.

Presently -- individually and collectively except for the southwest 500 acre area disc-drilled seeding described above -- due to the types and nominal number of visually apparent human imprints relative to the unit's size, the unit appears to be affected primarily by the forces of nature with the imprint of humans being substantially unnoticeable to the average visitor. The Malheur Resource Area interdisciplinary team concludes that the late 1970's naturalness determination was in error.

BLM does not concur with ONDA regarding the route type of ONDA's SC43 "way" which it noted, in part, was fenced off near SC43's east end as it approaches ONDA's SC44b cherry-stem "road". The fence ONDA photographed (ONDA photo NB7) at the time (sometime before August 2003) was a temporary (2-year) installation by BLM as part of the 2002 wild fire reclamation project. That fence has been removed since ONDA took its photograph, and the western segment of the route (along and near Three Fingers

Gulch) was mechanically maintained in 2007 to ensure relatively regular and continuous use of this road. BLM identifies ONDA's SC43 (and SC44b) as the north boundary road (034-RT26) of OR-034-055.

Associated with its 2004 proposed WSA, ONDA identifies fewer vehicular "ways" (i.e., what BLM terms MPTs) and less associated total mileage (minus ONDA's SC43 route which extends the width of its proposed WSA) than does BLM for those public lands associated with OR-034-055. This, in part, is due to the additional public land in the southern reaches of OR-034-055 which are not included in ONDA's proposed WSA, and within which BLM identifies about 4 additional MPTs. ONDA does not indicate visual evidence of any of the 2002 disc-drilled seedings, but notes the then visual appearance of certain harrow markings abutting OR-034-055's west boundary road (and which since have faded and cause no visible contrast on the landscape to the average visitor).

ONDA's 18,426 acre Three Fingers Rock proposed WSA is about 55% larger than OR-034-055. BLM herein makes no determination of whether or not ONDA's described natural characteristics and human-caused affects of its larger proposed WSA results in it appearing to be affected primarily by the forces of nature with the imprint of humans being substantially unnoticeable to the average visitor.

### 3. Does the unit have outstanding opportunities for solitude?

Yes \_\_\_\_\_ No  N/A \_\_\_\_\_

**Description:** The 500 acre unnatural appearing disc-drilled seeding described above is not included in this review for outstanding opportunities for solitude. The irregularly shaped unit is no greater than 4 miles in length (north-south) or in width, and is as short as 1.5 miles in both dimensions. There is inadequate vegetation height and/or density to provide for visual screening within the entire unit. Elevations within the unit range from 3,200 to 4,117 feet. While in some of the northeast and the southern half of the unit a visitor may be able to experience a sense of solitude with the aid of varying topography, the opportunity is not outstanding due to these areas' more so lower-profiled terrain relative to the unit's narrowed configuration in these locations. The limited extend of steeper or broken terrain of the unit's northwest is too small in area relative to this location's narrowed configuration of the unit to allow for outstanding opportunities for solitude. In summary, nowhere within the unit is there opportunity to experience outstanding solitude.

BLM herein draws no conclusion of whether or not ONDA's larger proposed WSA provides outstanding opportunities for solitude.

### 4. Does the unit have outstanding opportunities for primitive and unconfined recreation?

Yes \_\_\_\_\_ No  N/A \_\_\_\_\_



**Description:** The 500 acre unnatural appearing disc-drilled seeding described above is not included in this review for outstanding opportunities for primitive and unconfined recreation. The area provides hunting opportunities for common game species (predominately deer and chukar, some antelope). The unit is within a larger occupied habitat area of bighorn sheep, and is within an Oregon State hunting unit where a very limited number of hunting permits are issued annually for this prized trophy big game species. However, the occupancy by the species as associated with most of this inventory unit is nominal relative its use of the habitat area at large. The unit also provides opportunities for general sightseeing, day hiking and equestrian use. The unit does not possess any unique or special features which would more so draw visitors to the area, and does not have a known history of attracting backpacking use and associated recreational activities (e.g., camping). General wildlife viewing is available within the unit, possibly enhanced by incidental bighorn sheep sightings. In summary, the inventory unit does not provide outstanding opportunities of primitive and unconfined recreation.

ONDA states that its larger proposed WSA provides outstanding opportunities for primitive recreation in the form of hiking, backpacking, climbing, camping, wildlife watching, and geological study. BLM concludes that OR-034-055 does not possess unique or more so special geologic attributes for specific study, while noting that the area has a past and ongoing history of small-scale commercial mining of picture jasper. Furthermore, the unit does not possess attributes or properties inviting to climbing, with any occurring limited to unassisted rock scrambling of a general nature. BLM herein draws no conclusion of whether or not ONDA's larger proposed WSA provides outstanding opportunities for primitive and unconfined recreation.

##### 5. Does the unit have supplemental values?

Yes   X              No           N/A       

**Description:** BLM has recorded several sites of Owyhee clover and barren milkvetch; both are BLM special status plant species. Bighorn sheep, a BLM special status animal species in Oregon, has been periodically observed within the unit.

ONDA states that its proposed Three Fingers Rock WSA “may also provide habitat for Woodhouse’s Toad, Mojave Black-collared Lizard, Desert Horned Lizard, Ferruginous Hawk, Pygmy Rabbit, and White-tailed Antelope Squirrel,” which ONDA’s February 2004 submission to the Vale District declares are listed as “sensitive species” by the State of Oregon. As of 2009, the Woodhouse’s Toad, Mohave Black-collard Lizard, Desert Horned Lizard, and the White-tailed Antelope Squirrel were not considered sensitive by Oregon Department of Fish and Wildlife, BLM, or U.S. Fish and Wildlife Service. BLM observation records confirm that White-tailed Antelope Squirrels inhabit this unit. BLM acknowledges that habitat requirements may exist for Woodhouse’s Toad, Mojave Black-collared Lizard, Desert Horned Lizard, Ferruginous Hawk, and Pygmy Rabbit; however, neither ONDA nor any other entity has provided BLM official documentation confirming the presence of these species within this inventory unit.

**Summary of Findings and Conclusion**

**Unit Name and Number:** OR-034-055 -- Three Fingers Rock South

**Summary Results of Analysis:**

- 1. Does the area meet any of the size requirements?  Yes  No
- 2. Does the area appear to be natural?  Yes  No
- 3. Does the area offer outstanding opportunities for solitude or a primitive and unconfined type of recreation?  Yes  No  NA
- 4. Does the area have supplemental values?  Yes  No  NA

**Conclusion -- check one:**

The area, or a portion of the area, has wilderness character.

The area does not have wilderness character.

**Prepared by:** Robert Alward  
Robert Alward, Wilderness Planner contractor

**Team Members:**

<u>Mitch Thomas</u>	<u>2/4/10</u>
Mitch Thomas, Rangeland Management Specialist	Date
<u>Dave Draheim</u>	<u>2/10/10</u>
Dave Draheim, Outdoor Recreation Planner	Date
<u>Shaney Rockefeller</u>	<u>3/10/10</u>
Shaney Rockefeller, Soil Scientist	Date
<u>Michelle Caviness</u>	<u>2/25/10</u>
Michelle Caviness, Wildlife Biologist	Date
<u>Gillian Wigglesworth</u>	<u>2/5/10</u>
Gillian Wigglesworth, Botanist	Date
<u>Jonathan Westfall</u>	<u>02/09/2010</u>
Jon Westfall, Geologist	Date
<u>Eian Ray</u>	<u>02/09/10</u>
Eian Ray, GIS Specialist, contractor	Date
<u>Brent Grasty</u>	<u>2/9/10</u>
Brent Grasty, GIS Coordinator	Date

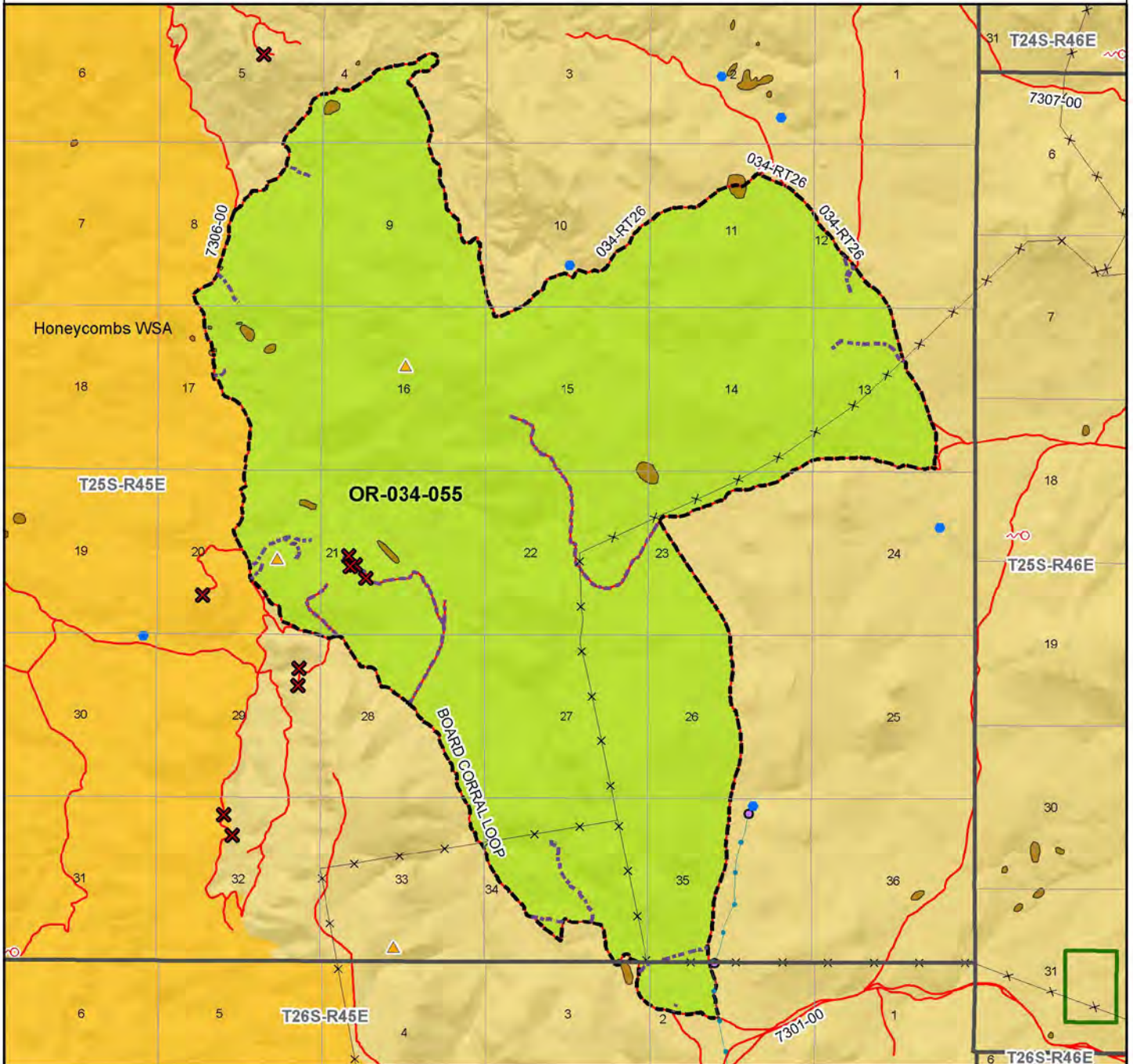
**Approved by:** Pat Ryan  
Pat Ryan, Malheur Resource Area Field Manager

4/5/2010  
Date

*This form documents information that constitutes an inventory finding on wilderness characteristics. It does not represent a formal land use allocation or a final agency decision subject to administrative remedies under either 43 CFR parts 4 or 1610.5-2*

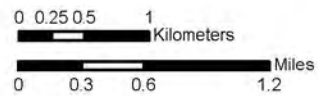
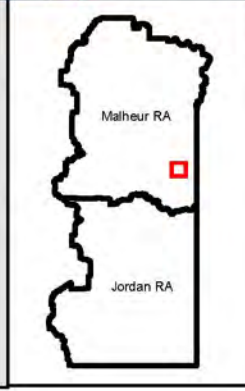
# Wilderness Characteristics - Overview

## Three Fingers Rock South - OR-034-055 - Map 1 of 2



**Legend**

Developed Spring	<b>Route Types - BLM Determination</b>
Wildlife Guzzler	Motorized Primitive Trail (MPT)
Earthen Reservoir	Discontinued Use
Pipeline	<b>Routes - Outside Wild Char Unit</b>
Trough	Major Highway
Fence	BLM Numbered & Other Routes
Storage Tank	<b>Land Ownership</b>
Surface Mining Disturbance	State
Sage Grouse Lek	Private
Special Status Plant	Other Federal Land
BLM Wild Char Inventory Unit	
Wilderness Study Area	
Mineral Material Site	
Road/Utility Right-of-Way	
Major Water Body	



**U.S. DEPARTMENT OF THE INTERIOR**  
BUREAU OF LAND MANAGEMENT

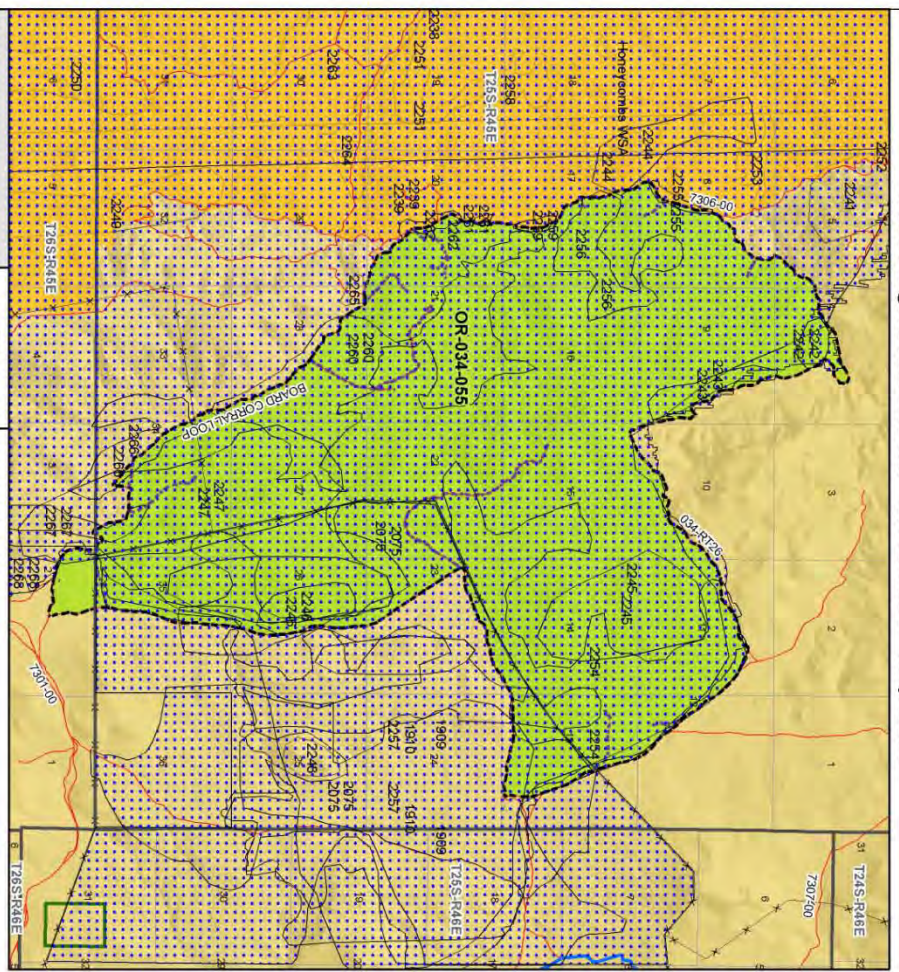


**VALE DISTRICT**  
July 16, 2009

No warranty is made by the Bureau of Land Management as to the accuracy, reliability, or completeness of these data for individual or aggregate use with other data. Original data were compiled from various sources. This information may not meet National Map Accuracy Standards. This product was developed through digital means and may be updated without notification.

--FINAL--

Wilderness Characteristics - Land Treatments  
 Three Fingers Rock South - OR-034-055 - Map 2 of 2



Wilderness Characteristics - Land Treatments  
 Three Fingers Rock South - OR-034-055 - Map 2 of 2

OBJECTID*	NAME	TREATMENT TYPE	SEED GROUP	DATE
1909	SADDLE BUTTE BRUSH CONTROL	Drill Seeding	Unknown	1989
1910	SADDLE BUTTE BRUSH CONTROL	Chemical Treatment	Not Applicable	1989
2075	SADDLE BUTTE SEEDING	Drill Seeding	Non-native Grasses	1986
2239	ATKINS ABERSEED	Aerial Seeding	Unknown	20030201
2242	ATKINS BITTERBUSH PLANT	Planting	Shrubs	20021201
2243	ATKINS BITTERBUSH PLANT	Planting	Shrubs	20021201
2244	ATKINS BITTERBUSH PLANT	Planting	Shrubs	20021201
2245	ATKINS BITTERBUSH PLANT	Planting	Shrubs	20021201
2246	ATKINS BITTERBUSH PLANT	Planting	Shrubs	20021201
2247	ATKINS BITTERBUSH PLANT	Planting	Shrubs	20021201
2251	ATKINS SAGE SDG	Drill Seeding	Shrubs	20020828
2254	ATKINS SDG	Drill Seeding	Native Grasses	20020828
2255	ATKINS HARBROW MIX	Drill Seeding	Shrubs	20020828
2256	ATKINS SDG	Drill Seeding	Native Grasses	20020828
2257	ATKINS SEEDING	Drill Seeding	Shrubs	20020816
2259	ATKINS HARBROW MIX	Drill Seeding	Shrubs	20020828
2260	ATKINS SDG	Drill Seeding	Native Grasses	20020828
2261	ATKINS HARBROW MIX	Drill Seeding	Shrubs	20020828
2262	ATKINS HARBROW MIX	Drill Seeding	Shrubs	20020828
2266	ATKINS SDG	Drill Seeding	Native Grasses	20020828
2267	ATKINS SDG	Drill Seeding	Native Grasses	20020828
2268	ATKINS SDG	Drill Seeding	Native Grasses	20020828

Note: The Land Treatments represented by many blue dots on the map to the left are labeled with the treatments' ObjectIDs listed in the first field of the Land Treatments table shown above. Multiple types of treatments may have been applied to the same area. For example, one treatment area may have been plowed and drill seeded - a record is shown in the table for each type of treatment.

**Legend**

**Land Treatment**

- Plowed
- Drill Seeding
- Aerial Seeding
- Chemical Treatment
- Native Grasses
- Shrubs
- Unknown
- Not Applicable

**Land Ownership**

- Private
- Public
- State
- Federal
- Other

**Other**

- Boundary
- Water
- Power
- Other

**Scale**

0 0.25 0.5 Kilometers  
 0 0.3 0.6 Miles

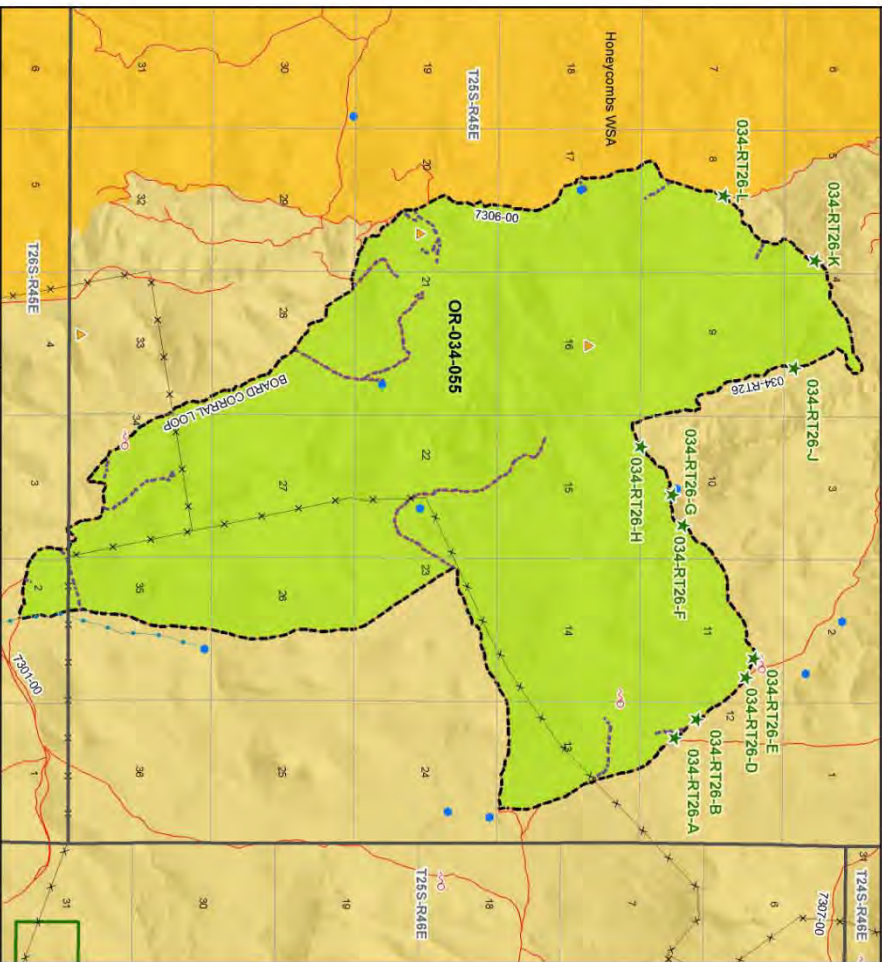
**U.S. DEPARTMENT OF THE INTERIOR**  
 BUREAU OF LAND MANAGEMENT

**VALE DISTRICT**  
 July 16, 2009

**OR-034-055**

**Map 2 of 2**

**Wilderness Characteristics - BLM Photo Points  
Three Fingers Rock South - OR-034-055**



**Legend**

- Developed Spring
- Wildlife Glacier
- Eastern Reserve
- Fence
- Mineral Material Site
- Road/Utility ROW
- Wilderness Study Area
- BLM Wild Char Inventory Photo Points
- BLM Wild Char Inventory Trail
- Road Type - BLM Determination
- Boundary Road
- Accessed Primitive Trail (APTT)
- Prescribed Use
- Zone - Private Wild Char Trail
- Owner
- Upper Riparian
- BLM Numbered & Other Features

**U.S. DEPARTMENT OF THE INTERIOR  
BUREAU OF LAND MANAGEMENT**

**VALE DISTRICT**  
July 16, 2009

Revising a study for purposes of land management...  
This document is a study for purposes of land management...  
It is not a final report and does not represent the...  
The information contained herein is for informational...  
and should not be used for any other purpose...  
without the express written approval of the...  
Bureau of Land Management.

**-FINAL-**

**Wilderness Characteristics - BLM Photo Points  
Three Fingers Rock South - OR-034-055**

PHOTO_LOCATION*	DIRECTION	PHOTO_TYPE	PHOTO_DATE	COMMENTS
034-RT26-A	SE	Route	20080611	No berm, evidence of maintenance, no hard veg.
034-RT26-A	NW	Route	20080611	No berm, evidence of maintenance, no hard veg.
034-RT26-A	N	Route	20080611	Veg in center of route, no evidence of maintenance.
034-RT26-B	NW	Route	20080611	Berm, evidence of maintenance.
034-RT26-B	SE	Route	20080611	Berm, evidence of maintenance.
034-RT26-D	SE	Route	20080611	Berm present, some evidence of maintenance.
034-RT26-D	NW	Route	20080611	Berm present, some evidence of maintenance.
034-RT26-D	W	Route	20080611	Berm present, some evidence of maintenance.
034-RT26-F	NE	Route	20080611	Berm with some vegetation present.
034-RT26-F	SW	Route	20080611	Berm with some vegetation present.
034-RT26-H	NE	Route	20080611	Berm, light vegetation, evidence of blading.
034-RT26-H	SW	Route	20080611	Berm, some vegetation present.
034-RT26-J	SE	Route	20080611	Evidence of blading, some vegetation present.
034-RT26-J	NW	Route	20080611	Evidence of blading, some vegetation present.
034-RT26-K	N	Route	20080611	Berm, evidence of blading, light vegetation.
034-RT26-K	SE	Route	20080611	Berm, evidence of blading, light vegetation.
034-RT26-L	NE	Route	20080611	Light vegetation present.
034-RT26-L	W	Route	20080611	Evidence of blading.
034-RT26-L	S	Route	20080611	Evidence of blading.

Note: The BLM Wild Char PhotoPoints displayed on the map are labeled with their Photo Locations. The BLM Photo Log table shown above lists the photos taken at their respective Photo Locations. Multiple photos may be taken at each Photo Location. Scenery and Project Photo Type pictures have their photo names provided in the Comments field.



034-RT26-A-N.JPG



034-RT26-A-NW.JPG



034-RT26-A-SE.JPG



034-RT26-B-NW.JPG



034-RT26-B-SE.JPG



034-RT26-D-NW.JPG



034-RT26-D-SE.JPG



034-RT26-D-W.JPG



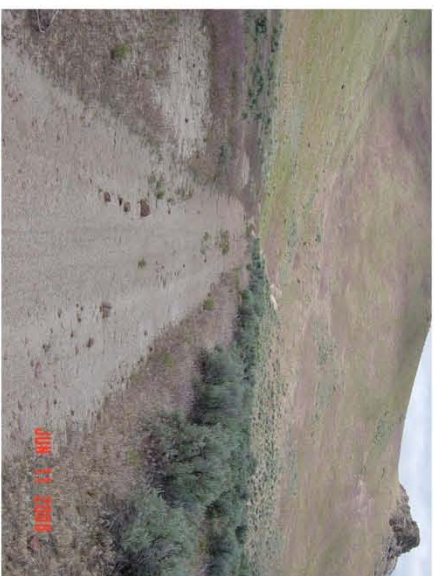
034-RT26-F-NE.JPG



034-RT26-F-SW.JPG



034-RT26-H-NE.JPG



034-RT26-H-SW.JPG



034-RT26-J-NW.JPG



034-RT26-J-SE.JPG



034-RT26-K-N.JPG



034-RT26-K-SE.JPG



034-RT26-L-NE.JPG



034-RT26-L-S.JPG



034-RT26-L-W.JPG



**H-6300-1-WILDERNESS INVENTORY MAINTENANCE  
IN BLM OREGON/WASHINGTON**

**APPENDIX C – ROAD\* ANALYSIS**

(Factors to consider when determining whether a route is a road for wilderness inventory purposes.)

**Wilderness Inventory Unit Name/Number: 034-055 – Three Fingers Rock South**

**NOTE:** This unit is affected by ONDA’s proposed Three Fingers Rock WSA.

**Route Name and/or Identifier** (*Include Transportation Plan Identifier, if known; include route number supplied by citizen information when available*):

BLM 034-RT 26

(ONDA references this route as a combination of “SC44b” [a road] and “SC43” [a vehicular way --- i.e., a motorized primitive trail]. BLM agrees that ‘SC44b’ is a road).

**I. LOCATION.** See attached map. Is the north boundary of this BLM WC unit. **List photo point references (if applicable):** Refer to this BLM inventory unit’s associated hard copy of its BLM Photo Points map, and affiliated Photo Log and photos -- retained in this unit’s permanent hard copy file, and electronically retained under this unit’s subfolder Final Findings/GIS Products. Any applicable ONDA map, photos and affiliated Photo Log are electronically retained under Wilderness Characteristics/Citizen Proposals.

**II. CURRENT PURPOSE OF ROUTE:**

*(Examples: Rangeland/Livestock Improvements (stock tank, developed spring, reservoir, fence, corral), Inholdings (ranch, farmhouse), Mine Site, Concentrated Use Site (camp site), Utilities (transmission line, telephone, pipeline), Administrative (project maintenance, communication site, vegetation treatment).)*

**Describe:** This route is one of three significant east-west connector routes between the Succor Creek county road and BLM road 7306-0-00, and for access into adjacent public lands for outdoor recreation pursuits (e.g., hunting, hiking, sightseeing) to rangeland improvements (3 reservoirs, a wildlife guzzler and a developed spring).

**III. ROAD RIGHT-OF-WAY:**

**Is a road right-of-way associated with this route?**

Yes \_\_\_\_\_ No **X** Unknown \_\_\_\_\_

**IV. CONSTRUCTION**

Yes  No

Examples: Paved \_\_\_\_\_ Bladed \_\_\_\_\_ Graveled \_\_\_\_\_ Roadside  
Berms  Cut/Fill  Other \_\_\_\_\_

**Describe:** Date of construction is unknown. The cut/fill likely occurred during the route's construction; current visual evidence of berms may be from mechanical maintenance performed since the route's construction.

## V. IMPROVEMENTS

Yes  No

By Hand Tools \_\_\_\_\_ By Machine \_\_\_\_\_

Examples: Culverts \_\_\_\_\_ Stream Crossings \_\_\_\_\_ Bridges \_\_\_\_\_  
Drainage \_\_\_\_\_ Barriers \_\_\_\_\_ Other \_\_\_\_\_

**Describe:**

## VI. MAINTENANCE:

**A. Is there Evidence or Documentation of Maintenance using hand tools or machinery?** Yes  No

If yes: Hand Tools (Y/N) \_\_\_\_\_ Machine (Y/N)

**Explain:** Over its length, this route has not received scheduled maintenance, since it is not a BLM numbered route on the Vale District transportation map. While specific dates are not documented, the western-most portion (for access to and through the Three Fingers canyon area, itself, was mechanically maintained at least once in the 1990's -- in response to accelerated erosion from spring runoff. In 2002 (not between photo points 34-RT26D –K) and in 2007, in support of wildfire suppression activities, the route was bladed along various segments.

**B. If the route is in good condition, but there is no evidence of maintenance, would mechanical maintenance with hand tools or machines be approved by BLM in the event this route became impassable?**

Yes  No

**Comments:** At minimum, to provide for continued through access and to assist access to range improvements.

**VII. REGULAR AND CONTINUOUS USE:**

Yes   X   No \_\_\_\_\_

**Describe evidence (vehicle tracks observed) and other rationale for whether use has occurred and will continue to occur on a relatively regular basis:**

This route has received relatively regular use on an annual, and at minimum a seasonal, basis and is expected to continue to occur into the future. During the drier periods of the year, once can observe use, evidenced by tracks of vehicles traveling the route. The frequency of use is the least on this of the three above-mentioned east-west travel routes.

**VIII. CONCLUSION:**

**To meet the definition of a road, items IV or V, and VI-A or B, and VII must be checked yes.**

Road: Yes   X   No \_\_\_\_\_

**Explanation:** Meets the criteria of road, as described and explained above.

Evaluator(s):  Mitch Thomas  Date:  2/10/09   
Mitch Thomas, Rangeland Management Specialist

Dave Draheim  Date:  4/06/09   
Dave Draheim, Outdoor Recreation Planner

-----  
\* **road:** An access route which has been **improved and maintained by mechanical means** to insure **relatively regular and continuous use**. A way maintained solely by the passage of vehicles does not constitute a road.

a. **“Improved and maintained”** – Actions taken physically by people to keep the road open to vehicle traffic. “Improved” does not necessarily mean formal construction. “Maintained” does not necessarily mean annual maintenance.

b. **“Mechanical means”** – Use of hand or power machinery or tools.

c. **“Relatively regular and continuous use”** – Vehicular use that has occurred and will continue to occur on a relatively regular basis. Examples are: access roads for

equipment to maintain a stock water tank or other established water sources; access roads to maintained recreation sites or facilities; or access roads to mining claims.

---

*Following is the definition from Glossary of OSO 7-3-2007 Draft H-6300-1:*

**road:** The BLM will continue to base the definition of what constitutes a “road” from the FLPMA’s legislative history. The language below is from the House of Representatives Committee Report 94-1163, page 17, dated May 15, 1976, on what became the FLPMA. It is the only statement regarding the definition of a road in the law or legislative history.

“The word ‘roadless’ refers to the absence of roads which have been improved and maintained by mechanical means to insure relatively regular and continuous use. A way maintained solely by the passage of vehicles does not constitute a road.”

The BLM previously adopted and will continue to use the following sub-definitions of certain words and phrases in the BLM road definition stated above:

a. **“Improved and maintained”** – Actions taken physically by people to keep the road open to vehicle traffic. “Improved” does not necessarily mean formal construction. “Maintained” does not necessarily mean annual maintenance.

b. **“Mechanical means”** – Use of hand or power machinery or tools.

c. **“Relatively regular and continuous use”** – Vehicular use that has occurred and will continue to occur on a relatively regular basis. Examples are: access roads for equipment to maintain a stock water tank or other established water sources; access roads to maintained recreation sites or facilities; or access roads to mining claims.

A road that was established or has been maintained solely by the passage of vehicles would not be considered a road, even if it is used on a relatively regular and continuous basis. Vehicle roads constructed by mechanical means but that are no longer being maintained by mechanical methods are not roads. Sole use of hands and feet to move rocks or dirt without the use of tools or machinery does not meet the definition of “mechanical means.” Roads need not be “maintained” on a regular basis but rather “maintained” when road conditions warrant actions to keep it in a usable condition. A dead-end (cherry-stem) road can form the boundary of an inventory area and does not by itself disqualify an area from being considered “roadless”.