

Wilderness Inventory Unit Index of Documents  
**Striped Mountain OR-034-103, 10 total pages**

Page 1: Index Cover Sheet

[Page 2: Form 1 – Documentation of BLM Wilderness Inventory: Findings on Record](#)

[Page 5: Form 2 – Documentation of Current Wilderness Inventory Conditions](#)

[Page 8: Form 2 – Summary of Findings and Conclusion](#)

[Page 9: Wilderness Characteristics Overview – Striped Mountain OR-034-103 Map 1 of 2](#)

[Page 10: Wilderness Characteristics-Land Treatments-Striped Mountain OR-034-103 Map 2 of 2](#)

**Prepared by:  
U.S. Department of the Interior  
Bureau of Land Management  
Vale District Office  
100 Oregon Street  
Vale, Oregon 97918**



## **H-6300-1-WILDERNESS INVENTORY MAINTENANCE IN BLM OREGON/WASHINGTON**

### **APPENDIX B – INVENTORY AREA EVALUATION**

#### **Evaluation of Current Conditions:**

- 1) Document and review the existing BLM wilderness inventory findings on file, if available, regarding the presence or absence of individual wilderness characteristics, using Form 1, below.
- 2) Consider relevant information regarding current conditions available in the office to identify and describe any changes to the existing information (use interdisciplinary (ID) team knowledge, aerial photographs, field observations, maps, etc.), and document your findings on Form 2, below.

When Citizen Information has been submitted regarding wilderness characteristics, document the submitted materials including: date of Submission; Name of District(s) and Field Office(s) Affected; Type of material Submitted (e.g. narrative, map, photo). Evaluate any submitted citizen information regarding the validity of proposed boundaries of the unit(s), the existence of roads and other boundary features, the size of the unit(s), and the presence or absence of wilderness characteristics based on relevant information available in the office (prior BLM inventories, ID team knowledge, aerial photographs, field observations, maps, etc.)

Conduct field reviews as necessary to verify information and to ascertain current conditions. Reach conclusions on current conditions including boundaries, size of areas and presence or absence of wilderness characteristics. Fully explain the basis for each conclusion on form 2, including any critical differences between BLM and citizen information.

Document your findings regarding current conditions for each inventoried area. Describe how the present conditions are similar to, or have changed from, the conditions documented in the original wilderness inventory. Document your findings on Form 2 for each inventory area. Cite to or attach data considered, including photographs, maps, GIS layers, field trip notes, project files, *etc.*

**Year:** 2010      **Unit Number/Name:** OR-034-103 — Striped Mountain

**FORM 1 -- DOCUMENTATION OF BLM WILDERNESS INVENTORY  
FINDINGS ON RECORD**

**1. Is there existing BLM wilderness inventory information on all or part of this area?**

Yes  No  (If yes, and if more than one unit is within the area, list the names of those units.):

**A.) Inventory Source(s) -- (X) Denotes all applicable BLM Inventory files, printed maps, or published BLM Decision documents with information pertaining to this unit.**

**Wilderness Inventories**

- 1978 – BLM Wilderness Inventory Unit partially of OR-03-01-13 Striped Mountain (unpublished BLM documents in case files)
- April 1979 – *Wilderness -- Proposed Initial Inventory – Roadless Areas and Islands Which Clearly Do Not have Wilderness Characteristics, Oregon and Washington*

**Wilderness Decision Documents**

- August 1979 – *Wilderness Review – Initial Inventory, Final Decision on Public Lands Obviously Lacking Wilderness Characteristics and Announcement of Public Lands to be Intensively Inventoried for Wilderness Characteristics, Oregon and Washington* (green document)
- October 1979 – *Wilderness Review – Intensive Inventory - Oregon, Proposed Decision on the Intensive Wilderness Inventory of Selected Areas* (grey document).
- March 1980 – *Wilderness Review – Intensive Inventory; Final Decisions on 30 Selected Units in Southeast Oregon and Proposed Decisions on Other Intensively Inventoried Units in Oregon and Washington* (orange document)
- November 1980 - *Wilderness Inventory – Oregon and Washington, Final Intensive Inventory Decisions* (brown document)
- November 1981 *Stateline Intensive Wilderness Inventory Final Decision, Oregon, Idaho, Nevada, Utah* (tan document).

**B.) Inventory Unit Name(s)/Number(s)**

Partially of BLM OR-03-01-13 Striped Mountain

**C.) Map Name(s)/Number(s)**

- Final Decision – Initial Wilderness Inventory Map, August 1979, Oregon
- Proposed Decision -- Intensive Wilderness Inventory of Selected Areas Map, October 1979, Oregon
- Intensive Wilderness Inventory Map, March 1980, Oregon
- Intensive Wilderness Inventory --Final Decisions Map, November 1980, Oregon.
- November, 1981 *Stateline Intensive Wilderness Inventory Final Decision, Oregon, Idaho, Nevada, Utah* (tan document).

**D.) BLM District(s)/Field Office(s)**

Vale District Office/ Malheur Field Office

**2. BLM Inventory Findings on Record**

(Existing inventory information regarding wilderness characteristics (if more than one BLM inventory unit is associated with the area, list each unit and answer each question individually for each inventory unit):

**Inventory Source:** See above.

<b>Unit#/ Name</b>	<b>Size (historic acres)</b>	<b>Natural Condition? Y/N</b>	<b>Outstanding Solitude? Y/N</b>	<b>Outstanding Primitive &amp; Unconfined Recreation? Y/N</b>	<b>Supplemental Values? Y/N</b>
Part of OR-03-01-13 Striped Mountain	9,560*	**	**	**	**
<b>TOTAL</b>	9,560				

\* -- The 1978 final determination for this original 9,560 acre OR-03-01-13 unit was that it was further divided by roads, which resulted in smaller roadless areas than this original delineated unit. The largest of these smaller roadless areas was documented to be 4, 330 acres.

\*\* -- Since none of the determined roadless areas of the original OR-03-01-13 unit met any size criteria, these criteria were not specifically addressed during the inventory.

## **H-6300-1-WILDERNESS INVENTORY MAINTENANCE IN BLM OREGON/WASHINGTON**

### **APPENDIX B – INVENTORY AREA EVALUATION**

#### **Evaluation of Current Conditions:**

- 1) Document and review the existing BLM wilderness inventory findings on file, if available, regarding the presence or absence of individual wilderness characteristics, using Form 1, below.
- 2) Consider relevant information regarding current conditions available in the office to identify and describe any changes to the existing information (use interdisciplinary (ID) team knowledge, aerial photographs, field observations, maps, etc.), and document your findings on Form 2, below.

When Citizen Information has been submitted regarding wilderness characteristics, document the submitted materials including: date of Submission; Name of District(s) and Field Office(s) Affected; Type of material Submitted (e.g. narrative, map, photo). Evaluate any submitted citizen information regarding the validity of proposed boundaries of the unit(s), the existence of roads and other boundary features, the size of the unit(s), and the presence or absence of wilderness characteristics based on relevant information available in the office (prior BLM inventories, ID team knowledge, aerial photographs, field observations, maps, etc.)

Conduct field reviews as necessary to verify information and to ascertain current conditions. Reach conclusions on current conditions including boundaries, size of areas and presence or absence of wilderness characteristics. Fully explain the basis for each conclusion on form 2, including any critical differences between BLM and citizen information.

Document your findings regarding current conditions for each inventoried area. Describe how the present conditions are similar to, or have changed from, the conditions documented in the original wilderness inventory. Document your findings on Form 2 for each inventory area. Cite to or attach data considered, including photographs, maps, GIS layers, field trip notes, project files, *etc.*

## **FORM 2 -- DOCUMENTATION OF CURRENT WILDERNESS INVENTORY CONDITIONS**

**Unit Number/Name:** OR-0347-103 — Striped Mountain

**Description of Current Conditions:** [Include land ownership, location, topography, vegetation features and summary of major human uses/activities.]

### **1. Is the unit of sufficient size?**

Yes   X   No       

**Description:** Refer to this inventory unit's associated Map 1 for its location. The unit has 6,191 acres of public land. The unit represents a larger area than any one of the determined roadless areas of the BLM 1978 original inventory unit which – originally combined at the time -- constituted OR-03-01-13. This is because since 1978 two of the routes dividing this original unit has changed status from a road at that time to a motorized primitive trail (MPT) now due to no known mechanical maintenance performed and BLM not intending to provide such maintenance on the routes in the future.

The unit's boundaries are BLM road 6685-00 as its northeast side, private lands and county roads 869 and 730 as its east and south side, and a road traversing public lands combined with private and state land parcels as its west side. The boundary roads are mechanically maintained as needed to provide for relatively regular and continuous use. A 40 acre private inholding is also a boundary feature of the unit.

### **2. Is the unit in a natural condition?**

Yes   X   No        N/A       

**Description:** The unit has rolling terrain with various hilltops located throughout it. Segments of multi-directional small drainages are associated with the terrain. Elevations range from 2,102 to 3,800 feet. Vegetation is predominately native and non-native grasses and sagebrush.

Refer to this unit's associated Map 1 and Map 2 for human imprints. There are 7.3 miles of 7 motorized primitive trails, 6.4 miles of rangeland fence, 2 earthen reservoirs, and 2 developed springs. One of the developed springs and one of the earthen reservoirs each abut a different boundary road of the unit. There remains no visually contrasting evidence of 1964 and 1982 disc drilled seedings of native and non-native grasses which included portions of the unit. A 2005 disc drilled seeding at the unit's northwest corner area actually does not enter the unit, itself. The types and limited extent of developments results in the unit appearing to be affected primarily by the forces of nature with the imprint of humans substantially unnoticeable to the average visitor.

**3. Does the unit have outstanding opportunities for solitude?**Yes \_\_\_\_\_ No  N/A \_\_\_\_\_

**Description:** The unit has insufficient vegetative cover to provide for outstanding opportunities for solitude. Given the unit's size, it is largely irregular in shape due primarily to the extent and location of the private lands associated with the unit's south and north boundaries. The unit's girth is no greater than about 2.5 miles in any given location, and 2 miles or less before intersecting bounded private lands. Thus, the unit's narrow configuration – which in part is also affected by the 40 acre inholding – combined with its predominately low profiled rolling terrain and vegetation does not provide settings sufficient for outstanding opportunities for solitude.

**4. Does the unit have outstanding opportunities for primitive and unconfined recreation?**Yes \_\_\_\_\_ No  N/A \_\_\_\_\_

**Description:** The primary recreation is hunting of common game species (primarily deer and chukar) and associated hiking. The unit possesses no special or unique features which would draw visitors to it. Individually or in combinations, the activities do not provide outstanding opportunities for primitive and unconfined recreation.

**5. Does the unit have supplemental values?**Yes  No \_\_\_\_\_ N/A \_\_\_\_\_

**Description:** BLM has documented 3 leks of sage grouse, a BLM special status animal species. There are two documented small sites of *Pyrrocoma radiata*, ray goldenweed, a BLM special status plant species.

Summary of Findings and Conclusion

Unit Name and Number: OR-034-103 — Striped Mountain

Summary Results of Analysis:

- 1. Does the area meet any of the size requirements?  Yes  No
- 2. Does the area appear to be natural?  Yes  No
- 3. Does the area offer outstanding opportunities for solitude or a primitive and unconfined type of recreation?  Yes  No  NA
- 4. Does the area have supplemental values?  Yes  No  NA

Conclusion -- check one:

- The area, or a portion of the area, has wilderness character.
- The area does not have wilderness character.

Prepared by: Robert Alward  
Robert Alward, Wilderness Planner contractor

Team Members:

<u>Garry Brown</u>	<u>12/6/10</u>
Garry Brown, Rangeland Management Specialist	Date
<u>Dan Thomas</u>	<u>12/6/10</u>
Dan Thomas, Range Technician	Date
<u>Gillian Wigglesworth</u>	<u>12/6/10</u>
Gillian Wigglesworth, Botanist	Date
<u>Michelle Caviness</u>	<u>12/16/10</u>
Michelle Caviness, Wildlife Biologist	Date
<u>Eian Ray</u>	<u>12-6-10</u>
Eian Ray, GIS Specialist, contractor	Date
<u>Brent Grasty</u>	<u>12/9/10</u>
Brent Grasty, GIS Coordinator	Date

Approved by:

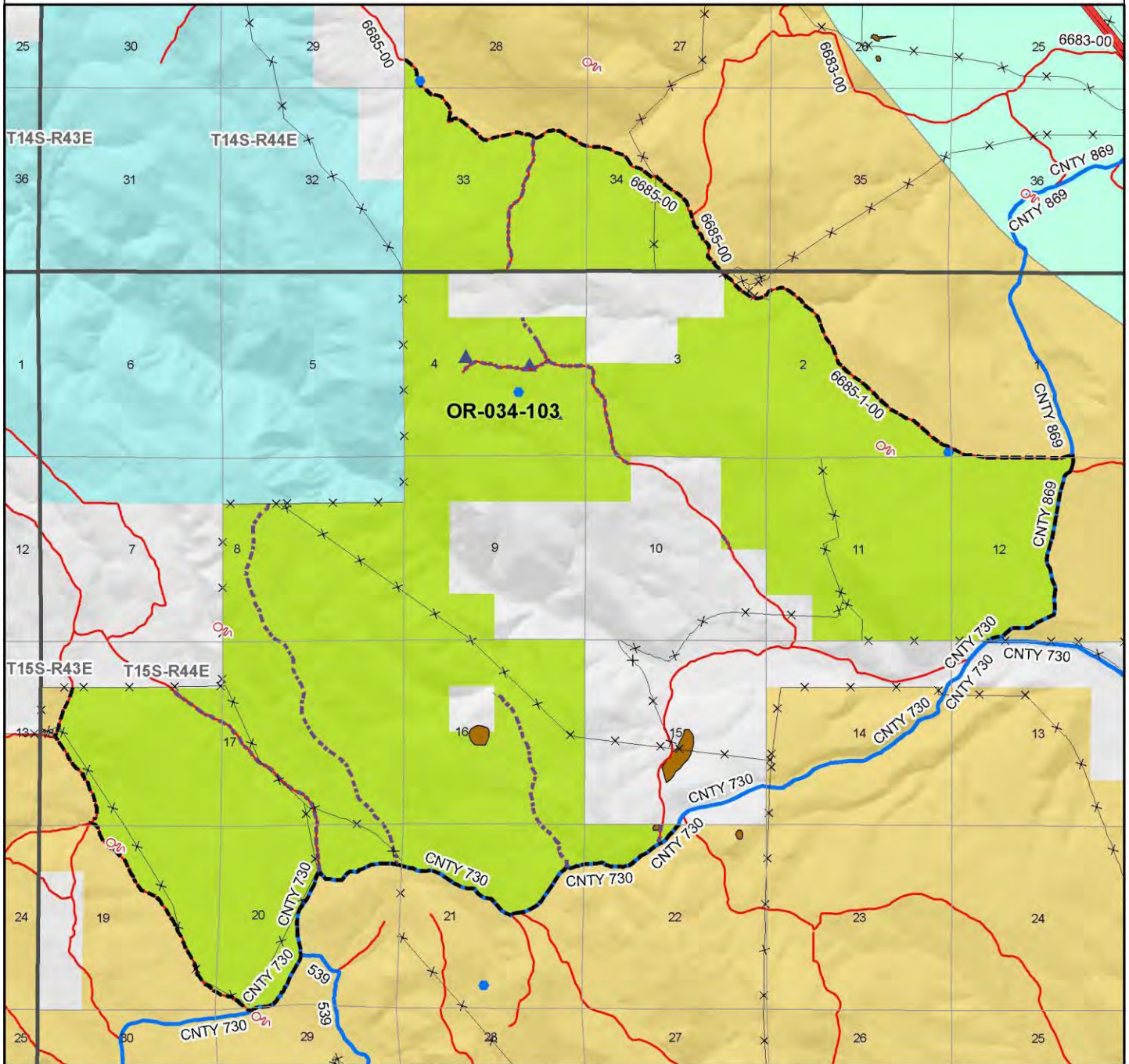
Pat Ryan 12/13/10  
Pat Ryan, Malheur Resource Area Field Manager Date

*This form documents information that constitutes an inventory finding on wilderness characteristics. It does not represent a formal land use allocation or a final agency decision subject to administrative remedies under either 43 CFR parts 4 or 1610.5-2.*



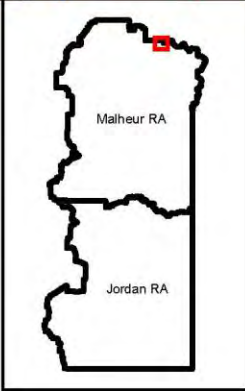
# Wilderness Characteristics - Overview

## Striped Mountain - OR-034-103 - Map 1 of 2



**Legend**

Developed Spring	Boundary Road
Wildlife Guzzler	Motorized Primitive Trail (MPT)
Earthen Reservoir	Discontinued Use
Pipeline	<b>Routes - Outside Wild Char Unit</b>
Trough	County
Fence	Major Highway
Storage Tank	BLM Numbered & Other Routes
Surface Mining Disturbance	<b>Land Ownership</b>
Sage Grouse Lek	Bureau of Land Management
Special Status Plant	State
BLM Wild Char Inventory Unit	Private
Wilderness Study Area	Other Federal Land
Mineral Material Site	
Road/Utility Right-of-Way	
Major Water Body	



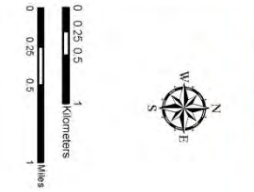
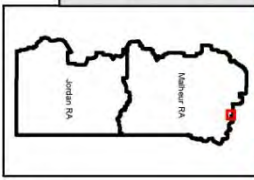
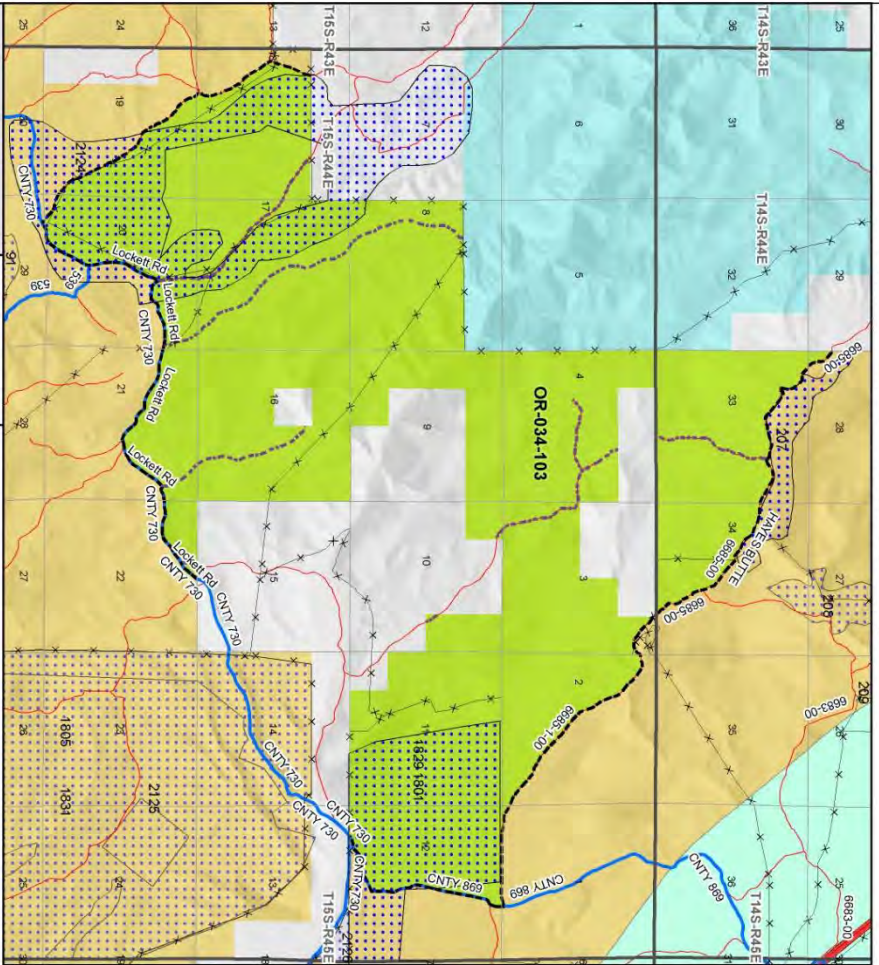
**U.S. DEPARTMENT OF THE INTERIOR**  
BUREAU OF LAND MANAGEMENT

**VALE DISTRICT**  
September 21, 2009

No warranty is made by the Bureau of Land Management as to the accuracy, reliability, or completeness of these data for individual or aggregate use with other data. Original data were compiled from various sources. This information may not meet National Map Accuracy Standards. This product was developed through digital means and may be updated without notification.

**--FINAL--**

**Wilderness Characteristics - Land Treatments**  
**Striped Mountain - OR-034-103 - Map 2 of 2**



U.S. DEPARTMENT OF THE INTERIOR  
 BUREAU OF LAND MANAGEMENT  
 VALE DISTRICT  
 September 21, 2010  
 --FINAL--

**Wilderness Characteristics - Land Treatments**  
**Striped Mountain - OR-034-103 - Map 2 of 2**

OBJECTID	NAME	TREATMENT TYPE	SEED GROUP	DATE
207	FAREWELL BEND ESR	Drill Seeding	Combination	2005/11/15
1801	LOVE SEEDING	Plow/Disc	Not Applicable	1964
1829	LOVE SEEDING	Drill Seeding	Unknown	1964
2124	MUD SPRINGS SEEDING	Drill Seeding	Non-native Grasses	1982

Note: The Land Treatments represented by navy blue dots on the map to the left are labeled with the treatments' ObjectIDs listed in the first field of the Land Treatments table shown above. Multiple types of treatments may have been applied to the same area. For example, one treatment area may have been plowed and drill seeded - a record is shown in the table for each type of treatment.