

Wilderness Inventory Unit Index of Documents
Spanish Charlie Basin OR-034-092, 28 total pages

Page 1: Index Cover Sheet

[Page 2: Form 1 – Documentation of BLM Wilderness Inventory: Findings on Record](#)

[Page 5: Form 2 – Documentation of Current Wilderness Inventory Conditions](#)

[Page 11: Form 2 – Summary of Findings and Conclusion](#)

[Page 12: Memo: WC Inventory and Findings in units respective of Boise District’s status](#)

[Page 13: Draft Form 2 – Owyhee Field Office – Current Conditions – Little Poison Creek ID-106-01](#)

[Page 16: Wilderness Characteristics Overview–Spanish Charlie Basin OR-034-092 Map 1 of 2](#)

[Page 17: Wilderness Characteristics-Land Treatments-Spanish Charlie Basin OR-034-092 Map 2 of 2](#)

[Page 18: Wilderness Characteristics–BLM Photo Points–Spanish Charlie Basin Map & Log](#)

[Page 19: Updated: Wilderness Characteristics Overview– Spanish Charlie Basin Map 1 of 2](#)

[Page 20: Updated: Wilderness Characteristics-Land Treatments-Spanish Charlie Basin Map 2 of 2](#)

[Page 21: Updated: Wilderness Characteristics–BLM Photo Points–Spanish Charlie Basin Map & Log](#)

[Page 22: OR-034-092 Spanish Charlie Basin BLM Photos](#)

Prepared by:
U.S. Department of the Interior
Bureau of Land Management
Vale District Office
100 Oregon Street
Vale, Oregon 97918



H-6300-1-WILDERNESS INVENTORY MAINTENANCE IN BLM OREGON/WASHINGTON

APPENDIX B – INVENTORY AREA EVALUATION

Evaluation of Current Conditions:

- 1) Document and review the existing BLM wilderness inventory findings on file, if available, regarding the presence or absence of individual wilderness characteristics, using Form 1, below.
- 2) Consider relevant information regarding current conditions available in the office to identify and describe any changes to the existing information (use interdisciplinary (ID) team knowledge, aerial photographs, field observations, maps, etc.), and document your findings on Form 2, below.

When Citizen Information has been submitted regarding wilderness characteristics, document the submitted materials including: date of Submission; Name of District(s) and Field Office(s) Affected; Type of material Submitted (e.g. narrative, map, photo). Evaluate any submitted citizen information regarding the validity of proposed boundaries of the unit(s), the existence of roads and other boundary features, the size of the unit(s), and the presence or absence of wilderness characteristics based on relevant information available in the office (prior BLM inventories, ID team knowledge, aerial photographs, field observations, maps, etc.)

Conduct field reviews as necessary to verify information and to ascertain current conditions. Reach conclusions on current conditions including boundaries, size of areas and presence or absence of wilderness characteristics. Fully explain the basis for each conclusion on form 2, including any critical differences between BLM and citizen information.

Document your findings regarding current conditions for each inventoried area. Describe how the present conditions are similar to, or have changed from, the conditions documented in the original wilderness inventory. Document your findings on Form 2 for each inventory area. Cite to or attach data considered, including photographs, maps, GIS layers, field trip notes, project files, *etc.*

Year: 2010 Unit Number/Name: OR-034-092 — Spanish Charlie Basin

**FORM 1 -- DOCUMENTATION OF BLM WILDERNESS INVENTORY
FINDINGS ON RECORD**

1. Is there existing BLM wilderness inventory information on all or part of this area?

Yes X No _____ (If yes, and if more than one unit is within the area, list the names of those units.):

A.) Inventory Source(s) -- (X) Denotes all applicable BLM Inventory files, printed maps, or published BLM Decision documents with information pertaining to this unit.

Wilderness Inventories

(X) 1978-1980 – BLM Wilderness Inventory Units -- **in Oregon:** 3-39 of OR-03-03-11 Spanish Charlie Basin; partially of OR-03-05-08 McBride Creek. **In Idaho:** partially of ID-16-1 (unpublished BLM documents in district case files).

(X) April 1979 – *Wilderness -- Proposed Initial Inventory – Roadless Areas and Islands Which Clearly Do Not have Wilderness Characteristics, Oregon and Washington*

Wilderness Decision Documents

- () August 1979 – *Wilderness Review – Initial Inventory, Final Decision on Public Lands Obviously Lacking Wilderness Characteristics and Announcement of Public Lands to be Intensively Inventoried for Wilderness Characteristics, Oregon and Washington* (green document)
- **(X)** August 1979 – *Idaho Initial Wilderness Inventory State Director's Final Decision*
- () October 1979 – *Wilderness Review – Intensive Inventory - Oregon, Proposed Decision on the Intensive Wilderness Inventory of Selected Areas* (grey document)
- () March 1980 – *Wilderness Review – Intensive Inventory; Final Decisions on 30 Selected Units in Southeast Oregon and Proposed Decisions on Other Intensively Inventoried Units in Oregon and Washington* (orange document)
- () November 1980 - *Wilderness Inventory – Oregon and Washington, Final Intensive Inventory Decisions* (brown document)
- **(X)** August 1979 – *Idaho Initial Wilderness Inventory State Director's Final Decision*
- () November 1981 *Stateline Intensive Wilderness Inventory Final Decision, Oregon, Idaho, Nevada, Utah* (tan document)

B.) Inventory Unit Name(s)/Number(s)

In Oregon – BLM 3-39 of OR-03-03-11 Spanish Charlie Basin; partially of OR-03-05-08 McBride Creek.

In Idaho -- partially of BLM ID-16-1

C.) Map Name(s)/Number(s)

- (X) Final Decision – Initial Wilderness Inventory Map, August 1979, Oregon
- () Proposed Decision -- Intensive Wilderness Inventory of Selected Areas Map, October 1979, Oregon
- () Intensive Wilderness Inventory Map, March 1980, Oregon
- () Intensive Wilderness Inventory --Final Decisions Map, November 1980, Oregon
- () November, 1981 *Stateline Intensive Wilderness Inventory Final Decision, Oregon, Idaho, Nevada, Utah* (tan document)

D.) BLM District(s)/Field Office(s)

In Oregon -- Vale District / Malheur Resource Area

In Idaho -- Boise District / Owyhee Resource Area

2. BLM Inventory Findings on Record

(Existing inventory information regarding wilderness characteristics (if more than one BLM inventory unit is associated with the area, list each unit and answer each question individually for each inventory unit):

Inventory Source: See above.

Unit#/Name	Size (historic acres)	Natural Condition? Y/N	Outstanding Solitude? Y/N	Outstanding Primitive & Unconfined Recreation? Y/N	Supplemental Values? Y/N
In OR: 3-39 of OR-03-03-11 Spanish Charlie Basin	17,560	N	*	*	*
In OR: Partially of OR-03-05-08 McBride Creek	4,320**	*	*	*	*
In ID: ID-16-1	14,014***	*	*	*	*
TOTAL	35,894				

* -- Criteria were not addressed during the Vale or Boise Districts' inventory of these units. To date, Vale District has not been provided any specific finding regarding these criteria from Boise Idaho BLM District.

** -- Only a portion of this acreage is within the current OR-034-092 unit.

*** -- Only a portion of this public land in Idaho is within the current OR-034-092 unit.

H-6300-1-WILDERNESS INVENTORY MAINTENANCE IN BLM OREGON/WASHINGTON

APPENDIX B – INVENTORY AREA EVALUATION

Evaluation of Current Conditions:

- 1) Document and review the existing BLM wilderness inventory findings on file, if available, regarding the presence or absence of individual wilderness characteristics, using Form 1, below.
- 2) Consider relevant information regarding current conditions available in the office to identify and describe any changes to the existing information (use interdisciplinary (ID) team knowledge, aerial photographs, field observations, maps, etc.), and document your findings on Form 2, below.

When Citizen Information has been submitted regarding wilderness characteristics, document the submitted materials including: date of Submission; Name of District(s) and Field Office(s) Affected; Type of material Submitted (e.g. narrative, map, and photos). Evaluate any submitted citizen information regarding the validity of proposed boundaries of the unit(s), the existence of roads and other boundary features, the size of the unit(s), and the presence or absence of wilderness characteristics based on relevant information available in the office (prior BLM inventories, ID team knowledge, aerial photographs, field observations, maps, etc.)

Conduct field reviews as necessary to verify information and to ascertain current conditions. Reach conclusions on current conditions including boundaries, size of areas and presence or absence of wilderness characteristics. Fully explain the basis for each conclusion on form 2, including any critical differences between BLM and citizen information.

Document your findings regarding current conditions for each inventoried area. Describe how the present conditions are similar to, or have changed from, the conditions documented in the original wilderness inventory. Document your findings on Form 2 for each inventory area. Cite to or attach data considered, including photographs, maps, GIS layers, field trip notes, project files, *etc.*

FORM 2 -- DOCUMENTATION OF CURRENT WILDERNESS INVENTORY CONDITIONS

Unit Number/Name – OR-034-092 — Spanish Charlie Basin

NOTE: In February, 2004, the Vale District received from Oregon Natural Desert Association (ONDA) its evaluation of wilderness characteristics for what ONDA names its 27,663 acre “Pole Creek Top proposed WSA”, all which is located within Vale District. For reference, a hard copy of ONDA’s proposal is retained in this unit’s file. Information provided by ONDA’s proposal was considered and incorporated as appropriate for this BLM Wilderness Characteristics Inventory maintenance. Within Vale District, unit OR-034-092 represents only a portion of ONDA’s proposal; the remainder of ONDA’s proposal includes Vale District’s BLM inventory unit OR-034-093.

For BLM unit OR-034-092, there are two differences between BLM and ONDA regarding inventory unit boundary features. Unlike ONDA’s proposal, BLM concludes that the ONDA routes SC55b, SC55c and SC56a – which together are one continuous route – are each segments of what BLM determines is a road (7308-0-00), not a motorized primitive trail(MPT, or what ONDA terms a “way”). This continuous road serves as the east boundary of OR-034-092 within Vale District. Additionally, the current BLM unit OR-034-092 includes some contiguous public lands of BLM’s Boise District in Idaho. For additional route information, refer to this BLM inventory unit’s associated BLM Road Analysis form for its 7308-0-00 road and its affiliated Photo Point Map, Photo Log and photos. Vale District also has route/photo documentation of the same route into Boise District, Idaho -- referenced as BLM route 034-RT88; however, Vale District draws no conclusion on the type of route it is in Boise District.

Description of Current Conditions: [Include land ownership, location, topography, vegetation features and summary of major human uses/activities.]

1. Is the unit of sufficient size?

Yes X No

Description: Refer to this inventory unit’s associated Map 1 for its location. A reference work map from Boise District regarding results of BLM Boise District’s late 1970’s inventory unit ID-16-1 and present bounds for OR034-092 within Boise District are retained in the hard copy file of OR-034-092.

The unit is composed of contiguous public lands located in both Vale District and the Boise District of Idaho. Total size of the unit is 26,517 acres (20,681 acres in Oregon and 5,831 acres in Idaho). In Oregon, boundaries consist of the State line, abutting private land parcels, roads (County 816, BLM 7308-0-00 and another crossing public lands), and three private inholdings totaling 300 acre.

In Idaho, the unit's boundary consists of a private parcel and three road segments crossing public lands. The unit's boundary roads within Vale District receive mechanical maintenance as needed to provide for relatively regular and seasonally continuous use.

2. Is the unit in a natural condition?

Yes X No _____ N/A _____

Description: The unit as a whole consists of portions of two primary watersheds -- Succor Creek, including its tributaries of Trimbley, Falice and Pole creeks (within Oregon); and Little Poison Creek, predominately in Idaho. The two watersheds are separated by the northern extension of Pole Creek Ridge. An elevated area known as Spanish Charlie Basin is centrally located within the southern half of the unit (which is fully in Oregon). Both watersheds are characterized by a complex of broken and highly diverse and mostly rocky terrain including elevated and extensive rim rock and steep to very steep slopes associated with the Succor Creek watershed, and widely distributed very steep to low-profiled terrain throughout the remainder of the unit. The unit has multidirectional drainages, branching from the array of higher, more rugged, rocky terrain. In Vale District, elevations range from approximately 5,100 to 3,370 feet; in Idaho between approximately 4,680 and 3,660 feet. Vegetation is predominately a mix of native and non-native grasses and sagebrush.

Refer to this unit's associated Map 1 and Map 2 for of human imprints in Vale District. The unit's area within the district has 16.9 miles of 15 motorized primitive trails (MPTs), 22.4 miles of rangeland fence (including the state line fence), and 6 earthen reservoirs. There remains some very site-specific surface scaring from a few very small scale locatable mineral extraction sites. There remains no visual contrast to the average visitor of vegetation treatments that occurred in 1964 (chemical treatment), 1969 (disc-drilled seeding of unknown species), and 2002 (disc drilled seedings).

In the late 1970's, Vale District concluded that the portion of the unit within Vale District (3-39) did not meet naturalness criteria. The inventory noted a 3,800 acre brush control project, which may still have been visually apparent to the average visitor at the time of the inventory. Presently, there is no apparent contrast from vegetation treatment in Vale District, and the type and extent of distribution of other existing imprints are such that the unit area in Vale District presently appears to be affected primarily by the forces of nature with the imprint of humans being substantially unnoticeable to the average visitor.

To date, Vale District has received no data from the Boise District about human imprints present within the unit in Idaho. Respectively, no determination on natural condition can be established in this document for that portion of the unit located in Boise District.

In summary, unit OR-034-092 within Vale District appears to be affected primarily by the forces of nature with the imprint of humans being substantially unnoticeable to the average visitor.

3. Does the unit have outstanding opportunities for solitude?Yes X No N/A

Description: The low profile of the unit's vegetation is insufficient to provide adequate screening to support an outstanding opportunity for solitude. The unit's shape is such that it measures from 4 to 9 miles in length and about 2 to 7 miles in width.

To date, Vale District has received no information from the Boise District on this solitude element of this inventory within the unit in Idaho. Respectively, no determination on solitude can be established in this document for that portion of the unit located in Boise District.

Within Vale District, the unit is 9 miles long and 2 to 4 miles wide. Within Vale District, the extensive distribution of highly diverse and frequently rugged terrain and topography relative to the unit's size and configuration provides outstanding opportunities for solitude. In summary, for reason stated above, unit OR-034-092 within Vale provides outstanding opportunities for solitude.

ONDA states its Pole Creek Top proposed WSA within Vale District provides outstanding opportunities for solitude due to a combination of the vegetation present and diversity of topographic features. Within the OR-034-093 unit, BLM concludes vegetation present is not sufficient to screen visitors for outstanding opportunities for solitude. Given that ONDA's proposed WSA is substantially larger than this BLM unit, BLM draws no conclusion on whether vegetation -- combined with topography -- results in outstanding opportunities for solitude within its proposed WSA. Along with this BLM unit, BLM concludes vegetation within its OR-034-093 inventory unit (which combined with OR-034-092 within Vale District is the same area as ONDA's proposed WSA) also does not sufficiently screen visitors for outstanding opportunities for solitude.

4. Does the unit have outstanding opportunities for primitive and unconfined recreation?Yes X No N/A

Description: To date, Vale District has received no information from the Boise District on this recreation element of this inventory within the unit in Idaho. Respectively, no determination on recreation can be established in this document for that portion of the unit located in Boise District.

The unit within Vale District provides hunting opportunities for common game species (primarily chukar, deer and some antelope). The unit's size and diverse topographic features in Vale District provide for quality day hiking and offers notable geologic and general sightseeing and photography opportunities. The area provides for equestrian and backpacking activities, although the area is not recognized as being a destination backpack area. The visual appeal associated with the Pole Creek drainage and canyon can more so draw visitors as sightseers and photographers to the area, where they can

access it; access can be restricted due to the private land inholding associated with this creek's canyon area of the inventory unit. Within Vale District's portion of the unit, no one natural or cultural feature or primitive and unconfined recreation opportunity is outstanding in quality, but in combination a mix of primitive and unconfined recreation activities together provides outstanding opportunities to participate in them in certain locations of the inventory unit, particularly where the topography is more so rugged, diverse, visually striking or challenging (such as rock scrambling and high point pursuit).

In summary, for reasons stated above, that portion of unit OR-034-092 within Vale District has outstanding opportunities for primitive and unconfined recreation.

ONDA states its Pole Creek Top proposed WSA provides outstanding opportunities for primitive recreation with the area possessing numerous topographic features which provide unique and interesting sites to explore, with Pole Creek Top itself being especially of note. Given that BLM's OR-034-092 is substantially smaller than ONDA's proposal, BLM draws no conclusions on ONDA's proposal, but with one partial exception. BLM does not concur with ONDA that the Pole Creek Top feature is especially of noted uniqueness as to draw visitors. However, BLM agrees with ONDA that the Top does provide for interesting sites to explore – though not to an extent as to have such recreational exploring of the Top be an outstanding primitive and unconfined recreation opportunity. ONDA mentions several plant and animal species observed under its outstanding solitude/recreation section of its submitted proposed WSA report to Vale District. BLM does recognize plants and animals as factors for consideration when determining solitude and recreation opportunities; however, BLM does not recognize ONDA's stated species – individually or in combinations, or in context/combinations of the area's other natural features – as particularly noteworthy components for providing outstanding opportunities for solitude or primitive and unconfined recreation within area.

5. Does the unit have supplemental values?

Yes X No N/A

Description: In Vale District, BLM has recorded one lek of sage grouse, which is a BLM special status animal species. Also within the Vale District, one site each of barren milkvetch and soft blazingstar, both being BLM special status plant species, has been documented in the unit.

ONDA opines that historic high point cairns and lithic scatter present within the unit within Vale District should be recognized as a cultural supplemental value.

ONDA states its proposed Pole Creek Top WSA within Vale District “may provide habitat for Woodhouse's Toad, Mojave Black-collared Lizard, Desert Horned Lizard, Ferruginous Hawk, Pygmy Rabbit, and White-tailed Antelope Squirrel,” which ONDA's February 2004 submission to the Vale District declares are listed as “sensitive species” by the State of Oregon. As of 2009, the Woodhouse's Toad, Mohave Black-collard

Lizard, Desert Horned Lizard, and White-tailed Antelope Squirrel were not considered sensitive by Oregon Department of Fish and Wildlife, BLM or U.S. Fish and Wildlife Service. BLM acknowledges that habitat requirements may exist for Woodhouse's Toad, Mojave Black-collared Lizard, Desert Horned Lizard, Ferruginous Hawk, Pygmy Rabbit, and White-tailed Antelope Squirrel; however, neither ONDA nor any other entity has provided BLM official documentation confirming the presence of these species within this inventory unit.

Summary of Findings and Conclusion

Unit Name and Number: OR-034-092 -- Spanish Charlie Basin (within Vale District)

Summary Results of Analysis:

- 1. Does the area meet any of the size requirements? X Yes No
- 2. Does the area appear to be natural? X Yes No
- 3. Does the area offer outstanding opportunities for solitude or a primitive and unconfined type of recreation? X Yes No NA
- 4. Does the area have supplemental values? X Yes No NA

Conclusion -- check one:

- X The area, or a portion of the area – within Vale District -- has wilderness character.
- The area – within Vale District --does not have wilderness character.

Prepared by: Robert Alward
Robert Alward, Wilderness Planner contractor, Vale District

Team Members:

<u>Mitch Thomas</u>	<u>12/8/10</u>
Mitch Thomas, Rangeland Management Specialist, Vale District	Date
<u>Gillian Wigglesworth</u>	<u>12/6/10</u>
Gillian Wigglesworth, Botanist, Vale District	Date
<u>Shaney Rockefeller</u>	<u>12/14/10</u>
Shaney Rockefeller, Soil Scientist, Vale District	Date
<u>Michelle Caviness</u>	<u>12/10/10</u>
Michelle Caviness, Wildlife Biologist, Vale District	Date
<u>Eian Ray</u>	<u>12-6-10</u>
Eian Ray, GIS Specialist, contractor, Vale District	Date
<u>Brent Grasty</u>	<u>12/9/10</u>
Brent Grasty, GIS Coordinator, Vale District	Date

Approved by:

Pat Ryan 12/15/10
Pat Ryan, Malheur Resource Area Field Manager, Vale District Date

This form documents information that constitutes an inventory finding on wilderness characteristics. It does not represent a formal land use allocation or a final agency decision subject to administrative remedies under either 43 CFR parts 4 or 1610.5-2.

Memo

August 28, 2012

To: Files – Vale District Wilderness Characteristics (WC) Inventory– WC units:
OR-034-092 Spanish Charlie Basin, and OR-034-093 McBride Creek

From: Pat Ryan, Field Manager, Malheur and Jordan Resource Areas, Vale District
Robert Alward, Wilderness Planner, contractor, Vale District

Subject: WC Inventory Findings of WC units OR-034-092 Spanish Charlie Basin and
OR-034-093 McBride Creek respective to Boise District's WC Inventory status

In 2009, the Subject two Vale District wilderness characteristics (WC) inventory units were considered by Vale District (and discussed with Boise District) to be contiguous to adjacent preliminarily identified roadless areas within Boise District. At the time, however, Boise District informed Vale District that presently it was not going to conduct WC inventory maintenance of public lands bordering Vale District. As a result, in 2010, Vale District signed its WC inventory finding for each of the Subject inventory units, with the concluded WC finding for each inventory unit limited to only those public lands located within Vale District. For additional information, refer to Vale District's completed 2010 signed WC inventory Form 1, Form 2 and associated maps for each of the two Subject Vale District WC inventory units. For reference, see the attached Vale District's associated Map 1 which accompanies the Form 2 of each of the Subject 2010 Vale District WC inventory units.

To date in 2012, following the 2011 BLM national issuance of instruction for conducting WC inventory, Vale District renewed coordination efforts with Boise District for updating WC inventory of public lands bordering the two district's common administrative boundary (State line). Vale District provided Boise District (Marsing, ID office) its current Form 1, Form 2 and associated map(s) for each of the two WC inventory units bordering Boise District (meaning the roadless acreages within Vale District met WC size criteria). Likewise, as a follow-up, to date Boise District has provided Vale District certain WC-related information, including map-depicted boundaries of that district's 2012 WC inventory unit -- ID-106-01, Little Poison Creek -- that abuts the two Subject Vale District WC inventory units, and an associated draft Form 2 document (unsigned and undated).

Boise District independently determined that its ID-106-01 WC inventory unit is contiguous with Vale District's public lands and states "however, there is a fence line running along the Idaho/Oregon border separating the Vale District from the Boise District". Boise District's draft Form 2 for its ID-106-01 concludes that the inventory unit is not in a natural condition; thus, the unit does not possess wilderness character. Boise District has informed Vale District that the final WC inventory finding for its ID-106-01 will remain unchanged from that stated in its draft Form 2 document.

(NOTE: Within Boise District, that district's ID-106-01 WC inventory unit is larger than the 2009 Vale District preliminarily identified 2 WC roadless areas within Boise District that are associated with the two Subject Vale District WC inventory units. Reason: Boise District's determination that a certain route in Idaho -- which in 2009 Vale District preliminarily identified in ID as a road -- is not a road within ID but rather a vehicle route [what Vale District terms a "motorized primitive trail"] which does not meet the definition of "road" for WC inventory purposes.)

Respectively, the 2010 findings of the two Subject Vale District WC inventory units remain unchanged, and -- as stated above -- those findings do not have a WC determination for public lands within abutting Boise District. In the future, should the two districts mutually determine that a change in a present WC unit boundary is warranted for (any) given bordering WC inventory unit(s) -- or should other updated WC information which affects (any) given WC inventory unit(s) be documented -- then Vale District will update its present WC inventory to reflect the new information, and a copy of the update(s) provided to Boise District.

FORM 2 – Owyhee Field Office**Inventory Unit No.: ID-106-01****Unit Name: Little Poison Creek****Current Conditions: Presence or Absence of Wilderness Characteristics**Area Unique Identifier 106-01 Little Poison CreekAcreage 13,275 acres

(1) Is the area of sufficient size? (If the area meets one of the exceptions to the size criterion, check “Yes” and describe the exception in the space provided below),

Yes X No _____

Note: If “No” is checked the area does not have wilderness characteristics; check “NA” for the remaining questions below.

Description (*describe the boundaries of the area--wilderness inventory roads, property lines, etc.*):

This unit is 13,275 acres total. The unit is contiguous to BLM land in Oregon administered by the Vale District; however, there is a fence line running along the Idaho/Oregon border separating the Vale District from the Boise District. Private property borders portions of the eastern and southern boundaries of the unit. Additionally, there is a section of State Land in the north central portion of this unit as well as a section along the eastern boundary of the unit. Highway 95 borders the southeastern portion of this unit.

Northern desert plant species on moderately rugged to rolling hills characterize the unit.

Unit is used for grazing.

(2) Does the area appear to be natural?

Yes _____ No X N/A _____

Note: If “No” is checked the area does not have wilderness characteristics; check “NA” for the remaining questions below.

Description (*include land ownership, location, topography, vegetation, and summary of major human uses/activities*):

The 13,275 acres within the Idaho unit do not appear to be natural. There is a fence line running the entire length of the Idaho/Oregon Border, approximately 11 miles long. There are multiple substantial routes penetrating and dissecting the unit totaling roughly 26.5 miles. Most routes are frequently used by permittees as well as recreationists. This area receives a frequent amount of public use.

There are seven reservoirs, two exclosures, a developed spring, pipeline, and approximately six substantial fence lines. Records also show that a spray and seeding project occurred in the southeast portion of this unit.

There are not 5,000 contiguous acres of land within this unit which appear to have been primarily affected by the forces of nature. The unit is penetrated and dissected by substantial routes, fences lines, and water developments throughout. Topographic and vegetative screening is generally insufficient to hide most imprints of man’s work from casual observation or to effectively screen visitors from each other.

(3) Does the area (or the remainder of the area if a portion has been excluded due to unnaturalness and the remainder is of sufficient size) have outstanding opportunities for solitude?

Yes _____ No _____ N/A X

Description (*describe the area’s outstanding opportunities for solitude*):

Topographic and vegetative screenings are generally insufficient to hide most imprints of man’s work from the casual observer. These features are also insufficient in effectively screening the high number of visitors from one another.

(4) Does the area (or the remainder of the area if a portion has been excluded due to unnaturalness and the remainder is of sufficient size) have outstanding opportunities for primitive and unconfined recreation?

Yes _____ No _____ N/A X

Note: If “No” is checked for both 3 and 4 the area does not have wilderness characteristics; check “NA” for question 5.

Description (*describe the area’s outstanding opportunities for primitive and unconfined recreation*):

While primitive types of recreation such as hiking, hunting, backpacking, and camping are possible, they are considered less than outstanding due to the high amount of motorized recreation that occurs throughout the area as well as the lack of interesting features to attract the visitor to these activities.

(5) Does the area have supplemental values (ecological, geological, or other features of scientific, educational, scenic or historical value)?

Yes _____ No _____ N/A X

Description:

Summary of Analysis*

Area Unique Identifier: 106-01 Little Poison Creek

Summary

Results of analysis:

(Note: explain the inventory findings for the entirety of the inventory unit. When an LWC has been identified that is smaller than the size of the total inventory unit, explain why certain portions of the inventory unit are not included in the LWC (e.g. the inventory found that certain parts lacked naturalness).

- 1. Does the area meet any of the size requirements? Yes ___ No
- 2. Does the area appear to be natural? ___ Yes No ___ N/A
- 3. Does the area offer outstanding opportunities for solitude or a primitive and unconfined type of recreation? ___ Yes ___ No N/A
- 4. Does the area have supplemental values? ___ Yes ___ No N/A

Check one:

The area, or a portion of the area, has wilderness characteristics and is identified as Land with Wilderness Characteristics (LWC).

The area does not have wilderness characteristics.

Prepared by (team members):

Ryan Homan	Outdoor Recreation Planner
Brad Jost	Wildlife Biologist
Beth Corbin	Botanist/Ecologist
Rich Jackson	Hydrologist
Tina Ruffing	Supervisory Range Management Specialist
Raul Trevino	Range Management Technician

Reviewed by (District or Field Manager):

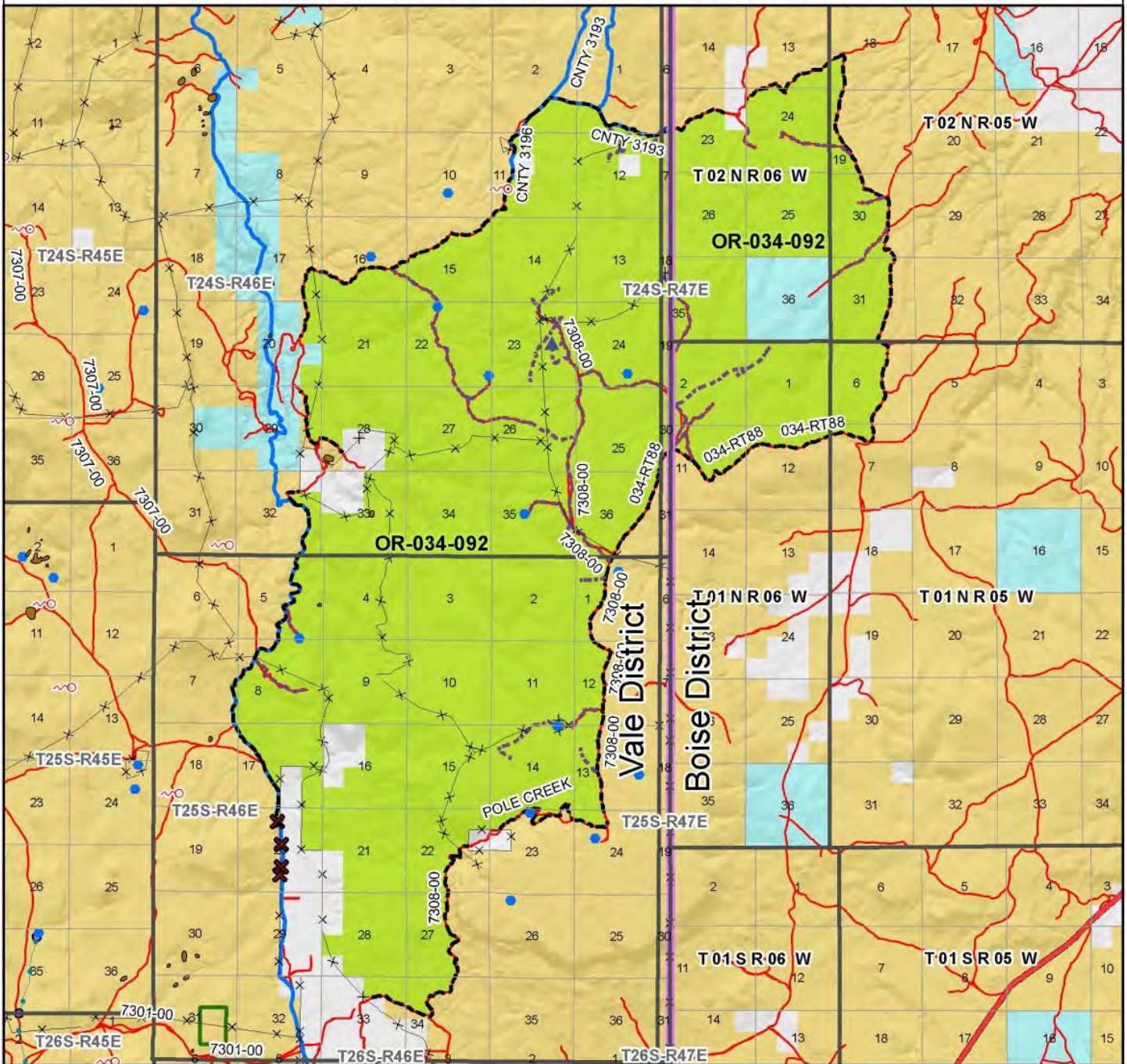
Name: _____ **Title:** _____

Date: _____

* This form documents information that constitutes an inventory finding on wilderness characteristics. It does not represent a formal land use allocation or a final agency decision subject to administrative remedies under either 43 CFR parts 4 or 1610.5-3.

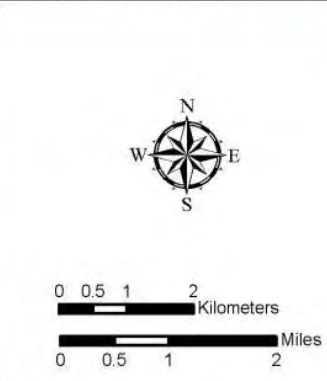
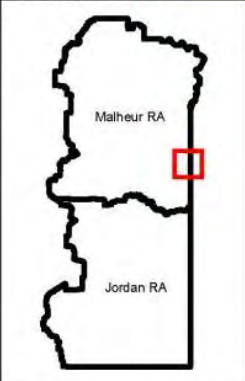
Wilderness Characteristics - Overview

Spanish Charlie Basin - OR-034-092 - Map 1 of 2



Legend

Developed Spring	Route Types - BLM Determination
Wildlife Guzzler	Boundary Road
Earthen Reservoir	Motorized Primitive Trail (MPT)
Pipeline	Discontinued Use
Trough	Discontinued Use
Fence	Routes - Outside Wild Char Unit
Storage Tank	Major Highway
Surface Mining Disturbance	BLM Numbered & Other Routes
Sage Grouse Lek	Land Ownership
Special Status Plant	Bureau of Land Management
BLM Wild Char Inventory Unit	State
Wilderness Study Area	Private
Mineral Material Site	Other Federal Land
Road/Utility Right-of-Way	
Major Water Body	



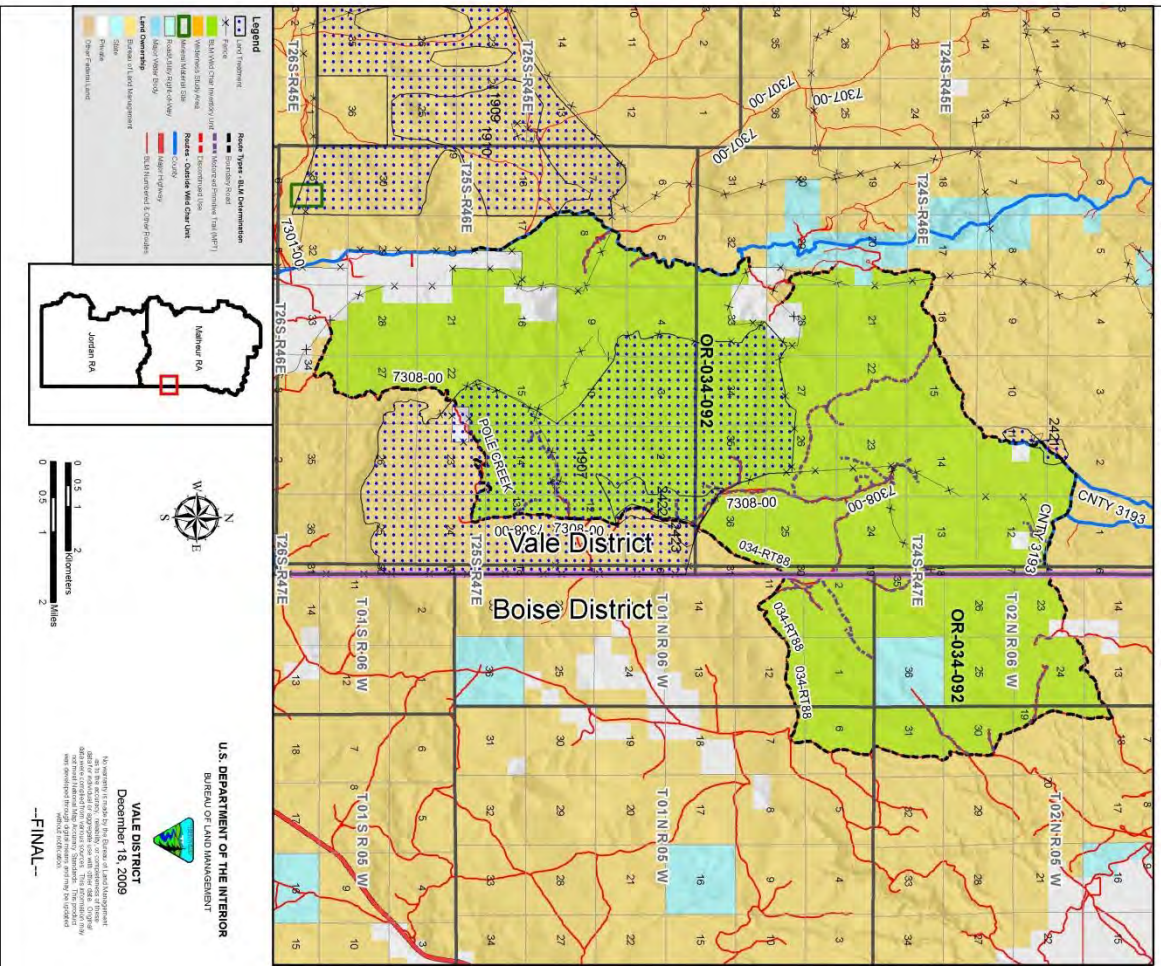
U.S. DEPARTMENT OF THE INTERIOR
BUREAU OF LAND MANAGEMENT

VALE DISTRICT
December 18, 2009

No warranty is made by the Bureau of Land Management as to the accuracy, reliability, or completeness of these data for individual or aggregate use with other data. Original data were compiled from various sources. This information may not meet National Map Accuracy Standards. This product was developed through digital means and may be updated without notification.

--FINAL--

Wilderness Characteristics - Land Treatments
Spanish Charlie Basin - OR-034-092 - Map 2 of 2



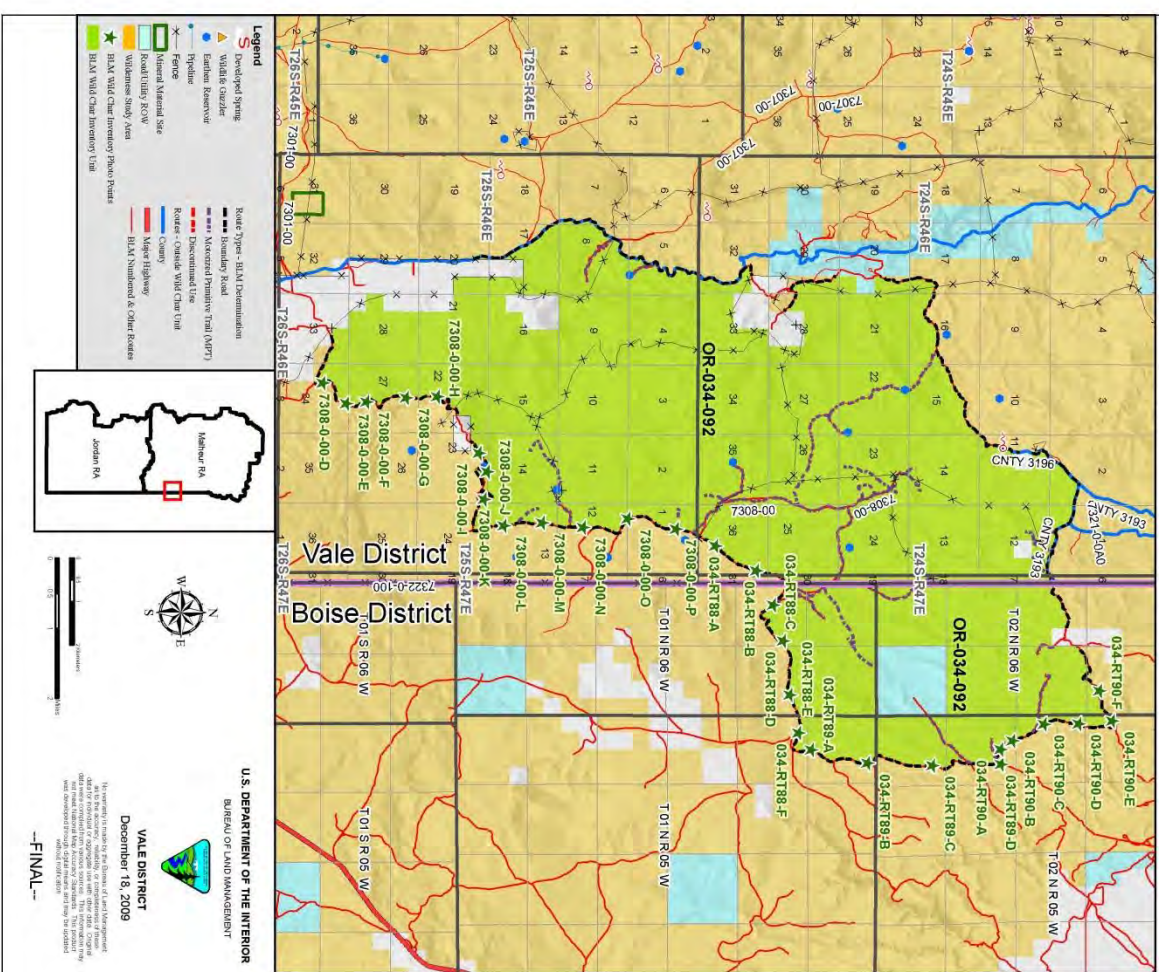
Wilderness Characteristics - Land Treatments
Spanish Charlie Basin - OR-034-092 - Map 2 of 2

OBJECTID*	NAME	TREATMENT TYPE	SEED GROUP	DATE	NEPA_NAME
1907	TOP SPRAY AREA	Chemical Treatment	Not Applicable	1964	Vale Project
1909	SADDLE BUTTE BRUSH CONTROL	Drill Seeding	Unknown	1969	Vale Project
1910	SADDLE BUTTE BRUSH CONTROL	Chemical Treatment	Not Applicable	1989	Vale Project
2421	TRIMBL Y FIRE REHAB	Drill Seeding	Native Grasses	20021001	<Null>
2422	TRIMBL Y FIRE REHAB	Drill Seeding	Native Grasses	20021001	<Null>
2423	TRIMBL Y FIRE REHAB	Drill Seeding	Non-native Grasses	20020801	<Null>

Note: The Land Treatments represented by navy blue dots on the map to the left are labeled with the treatments' ObjectIDs listed in the first field of the Land Treatments table shown above. Multiple types of treatments may have been applied to the same area. For example, one treatment area may have been plowed and drill seeded - a record is shown in the table for each type of treatment.

U.S. DEPARTMENT OF THE INTERIOR
 BUREAU OF LAND MANAGEMENT
 VALE DISTRICT
 December 16, 2009
 -FINAL-

Wilderness Characteristics - BLM Photo Points
Spanish Charlie Basin - OR-034-092



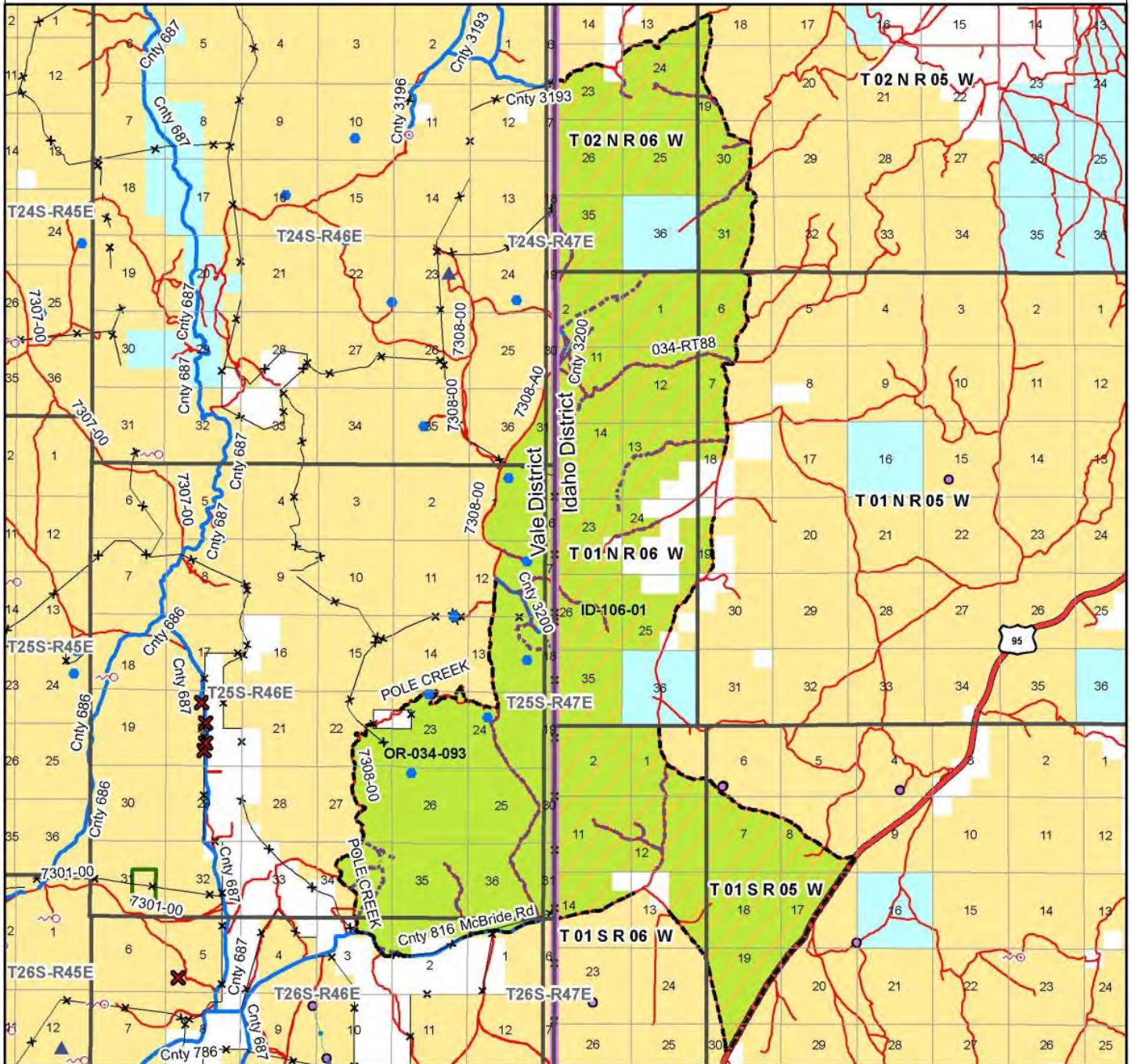
PHOTO_LOCATION*	DIRECTION	PHOTO_TYPE	PHOTO_DATE	COMMENTS
034-RT90-A	NW	Route	10/28/09	Slight sidecut
034-RT90-A	SE	Route	10/28/09	No evidence
034-RT90-B	NW	Route	10/28/09	No evidence
034-RT90-B	SE	Route	10/28/09	No evidence
034-RT90-C	NW	Route	10/28/09	Small berms
034-RT90-C	SE	Route	10/28/09	Small berms
034-RT90-D	N	Route	10/28/09	Small cut on left.
034-RT90-D	S	Route	10/28/09	No evidence
034-RT90-E	W	Route	10/28/09	Side cut
034-RT90-E	E	Route	10/28/09	Side cut
034-RT90-F	W	Route	10/28/09	Side cut
034-RT90-F	E	Route	10/28/09	No evidence
034-RT90-G	N	Route	10/28/09	Dual ditches, gravel, berms.
034-RT90-G	S	Route	10/28/09	Dual ditches, gravel, berms
034-RT90-H	N	Route	10/28/09	Ditches, side drains, berms
034-RT90-H	S	Route	10/28/09	Ditches, berms
034-RT90-I	N	Route	10/28/09	Ditches, berms
034-RT90-I	S	Route	10/28/09	Ditches, berms
034-RT90-J	N	Route	10/28/09	Berms, ditch.
034-RT90-J	S	Route	10/28/09	Berms, ditch.
034-RT90-K	W	Route	10/28/09	Small ditch, berm
034-RT90-K	E	Route	10/28/09	Small berm
034-RT90-L	NW	Route	10/28/09	Old grader marks.
034-RT90-L	SE	Route	10/28/09	Large berms
034-RT90-M	N	Route	10/28/09	Side cut
034-RT90-M	S	Route	10/28/09	No evidence
034-RT90-N	NW	Route	10/28/09	Rocky berm.
034-RT90-N	SE	Route	10/28/09	Side cut
034-RT90-O	N	Route	10/28/09	Side cut
034-RT90-O	S	Route	10/28/09	Side cut
034-RT90-P	N	Route	10/28/09	Rocky berm
034-RT90-P	S	Route	10/28/09	Rocky berm

Note: The BLM Wild Char PhotoPoints displayed on the map are labeled with their Photo Locations. The BLM Photo Log table shown above lists the photos taken at their respective Photo Locations. Multiple photos may be taken at each Photo Location. Scenery and Project Photo Type pictures have their photo names provided in the Comments field.

Wilderness Characteristics - Overview

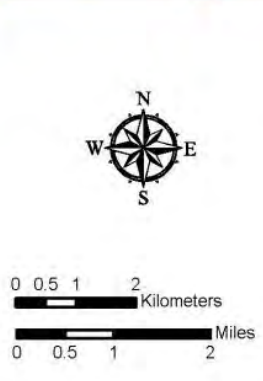
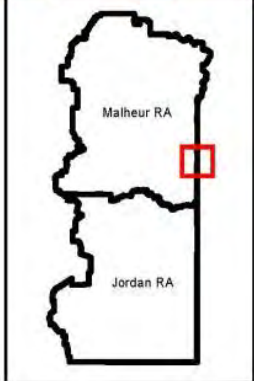
McBride Creek, OR-034-093 / Little Poison Creek, ID-106-01

Map 1 of 2



Legend

Developed Spring	Route Types - BLM Determination
Wildlife Ouzler	Boundary Road
Earthen Reservoir	Motorized Primitive Trail (MPT)
Pipeline	Discontinued Use
Trough	Routes - Outside Wild Char Unit
Fence	County
Storage Tank	Major Highway
Surface Mining Disturbance	BLM Numbered & Other Routes
Sage Grouse Lek	Land Ownership
Special Status Plant	Bureau of Land Management
OR Wild Char Inventory Unit	State
ID Wild Char Inventory Unit	Private
Wilderness Study Area	Other Federal Land
Mineral Material Site	District Boundary
Road/Utility Right-of-Way	
Major Water Body	



U.S. DEPARTMENT OF THE INTERIOR
BUREAU OF LAND MANAGEMENT

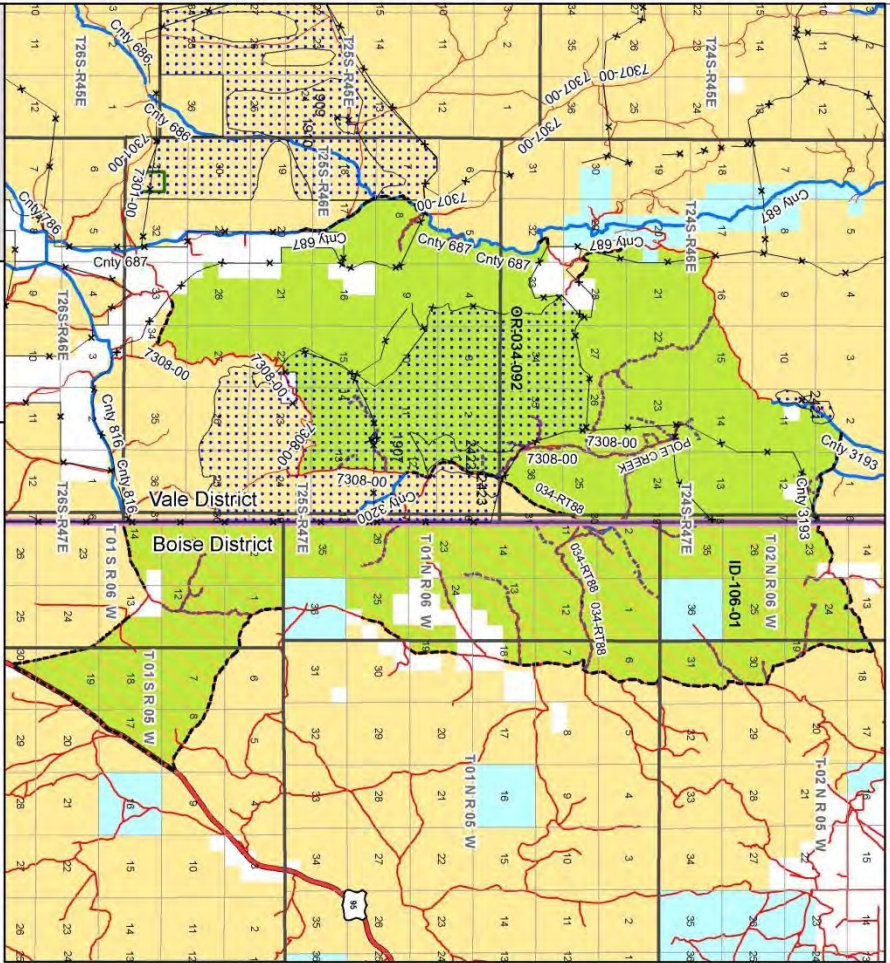
VALE DISTRICT
September 21, 2012

No warranty is made by the Bureau of Land Management as to the accuracy, reliability, or completeness of these data for individual or aggregate use with other data. Original data were compiled from various sources. This information may not meet National Map Accuracy Standards. This product was developed through digital means and may be updated without notification.

--FINAL--

Wilderness Characteristics - Land Treatments
 Spanish Charlie Basin, OR-034-092 / Little Poison Creek, ID-106-01
 Map 2 of 2

Wilderness Characteristics - Land Treatments
 Spanish Charlie Basin, OR-034-092 / Little Poison Creek, ID-106-01
 Map 2 of 2



Legend

Land Treatments

- 1907 TOP SPRAY AREA
- 1909 SADDLE BUTTE BRUSH CONTROL
- 1910 SADDLE BUTTE BRUSH CONTROL
- 2421 TRIMBLY FIRE REHAB
- 2422 TRIMBLY FIRE REHAB
- 2423 TRIMBLY FIRE REHAB

Other Features

- Boundary
- Water
- Power
- Other Features

Map Information

Scale: 0, 0.5, 1, 2 Miles

North Arrow

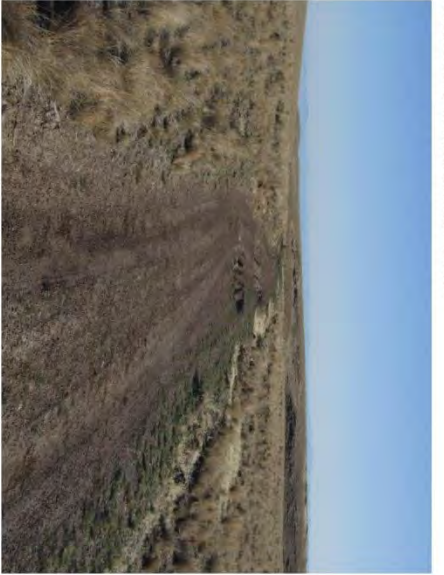
U.S. DEPARTMENT OF THE INTERIOR
 BUREAU OF LAND MANAGEMENT

VALE DISTRICT
 September 22, 2012

--FINAL--

OBJECTID*	NAME	TREATMENT TYPE	SEED GROUP	DATE	NEPA_NAME
1907	TOP SPRAY AREA	Chemical Treatment	Not Applicable	1964	Vale Project
1909	SADDLE BUTTE BRUSH CONTROL	Drill Seeding	Unknown	1969	Vale Project
1910	SADDLE BUTTE BRUSH CONTROL	Chemical Treatment	Not Applicable	1969	Vale Project
2421	TRIMBLY FIRE REHAB	Drill Seeding	Native Grasses	20021001	<Null>
2422	TRIMBLY FIRE REHAB	Drill Seeding	Native Grasses	20021001	<Null>
2423	TRIMBLY FIRE REHAB	Drill Seeding	Non-native Grasses	20020801	<Null>

Note: The Land Treatments represented by navy blue dots on the map to the left are labeled with the treatments' ObjectIDs listed in the first field of the Land Treatments table shown above. Multiple types of treatments may have been applied to the same area. For example, one treatment area may have been plowed and drill seeded - a record is shown in the table for each type of treatment.



034-RT88-A-N.JPG



034-RT88-B-S.JPG



034-RT88-D-NE.JPG

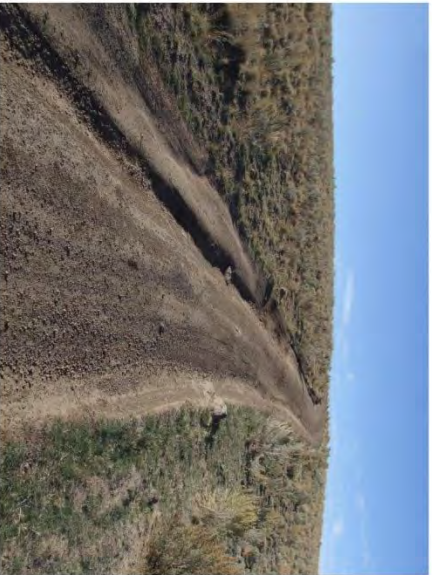
OR-034-092 Spanish Charlie Basin Page 1



034-RT88-A-S.JPG



034-RT88-C-NW.JPG



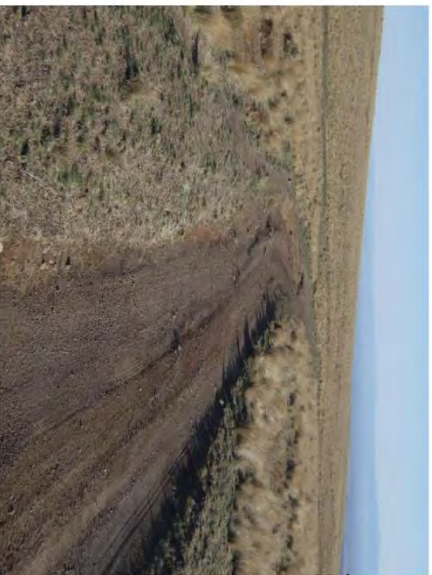
034-RT88-D-SW.JPG



034-RT88-B-N.JPG



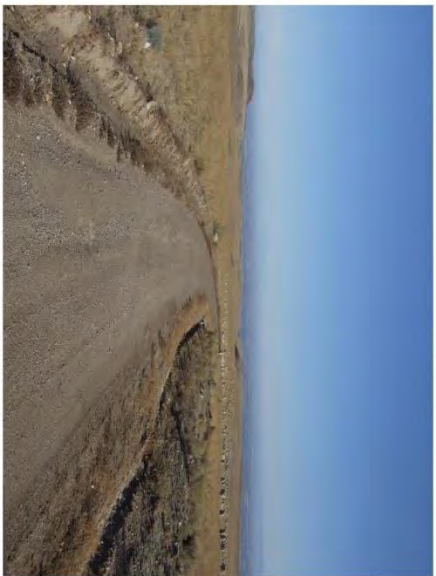
034-RT88-C-SE.JPG



034-RT88-E-NE.JPG



034-RT88-E-SW.JPG



034-RT89-A-N.JPG

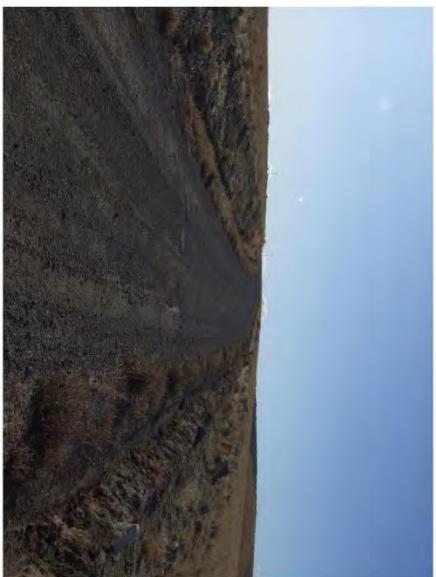


034-RT89-B-S.JPG

OR-034-092 Spanish Charlie Basin Page 2



034-RT88-F-NE.JPG



034-RT89-A-S.JPG



034-RT89-C-N.JPG



034-RT88-F-SW.JPG



034-RT89-B-N.JPG



034-RT89-C-S.JPG



034-RT89-D-N.JPG

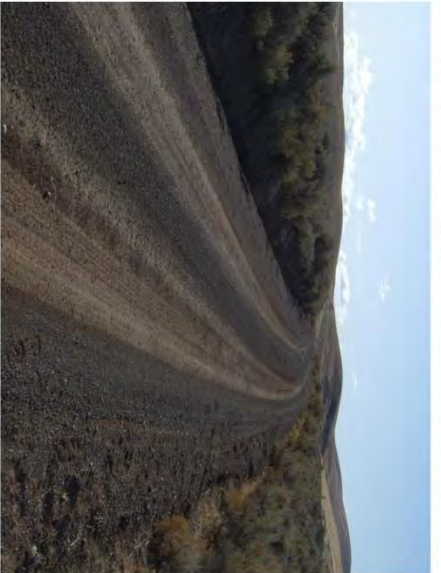


034-RT90-A-SE.JPG

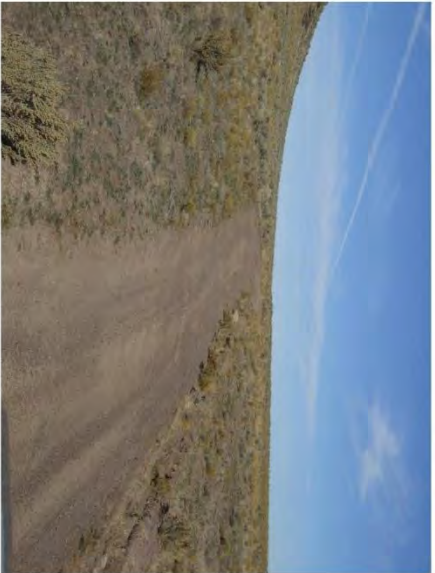


034-RT90-C-NW.JPG

OR-034-092 Spanish Charlie Basin Page 3



034-RT89-D-S.JPG



034-RT90-B-NW.JPG



034-RT90-C-SE.JPG



034-RT90-A-NW.JPG



034-RT90-B-SE.JPG



034-RT90-D-N.JPG



034-RT90-D-S.JPG



034-RT90-E-E.JPG



034-RT90-E-W.JPG



034-RT90-F-E.JPG



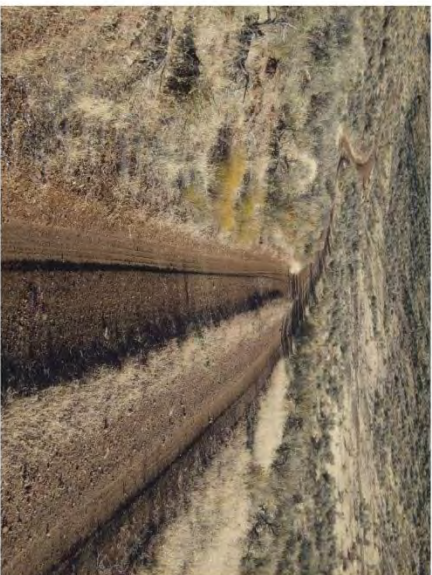
034-RT90-F-W.JPG



7308-0-00-D-NW.JPG



7308-0-00-D-SE.JPG



7308-0-00-E-N.JPG



7308-0-00-E-S.JPG



7308-0-00-F-NW.JPG



7308-0-00-G-S.JPG



7308-0-00-I-NE.JPG



7308-0-00-F-SE.JPG



7308-0-00-H-N.JPG



7308-0-00-I-SW.JPG



7308-0-00-G-N.JPG



7308-0-00-H-S.JPG



7308-0-00-J-E.JPG



7308-0-00-J-W.JPG



7308-0-00-L-N.JPG



7308-0-00-M-S.JPG

OR-034-092 Spanish Charlie Basin Page 6



7308-0-00-K-NW.JPG



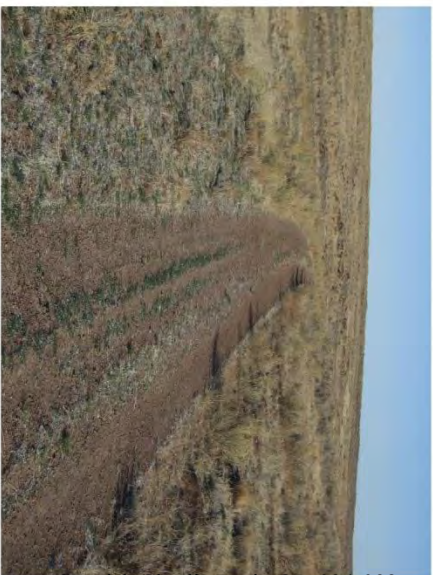
7308-0-00-L-S.JPG



7308-0-00-N-N.JPG



7308-0-00-K-SE.JPG



7308-0-00-M-N.JPG



7308-0-00-N-S.JPG



7308-0-00-O-NW.JPG



7308-0-00-P-S.JPG

OR-034-092 Spanish Charlie Basin Page 7



7308-0-00-O-SE.JPG



7308-0-00-P-N.JPG