

# SHEEP MOUNTAIN TRAIL

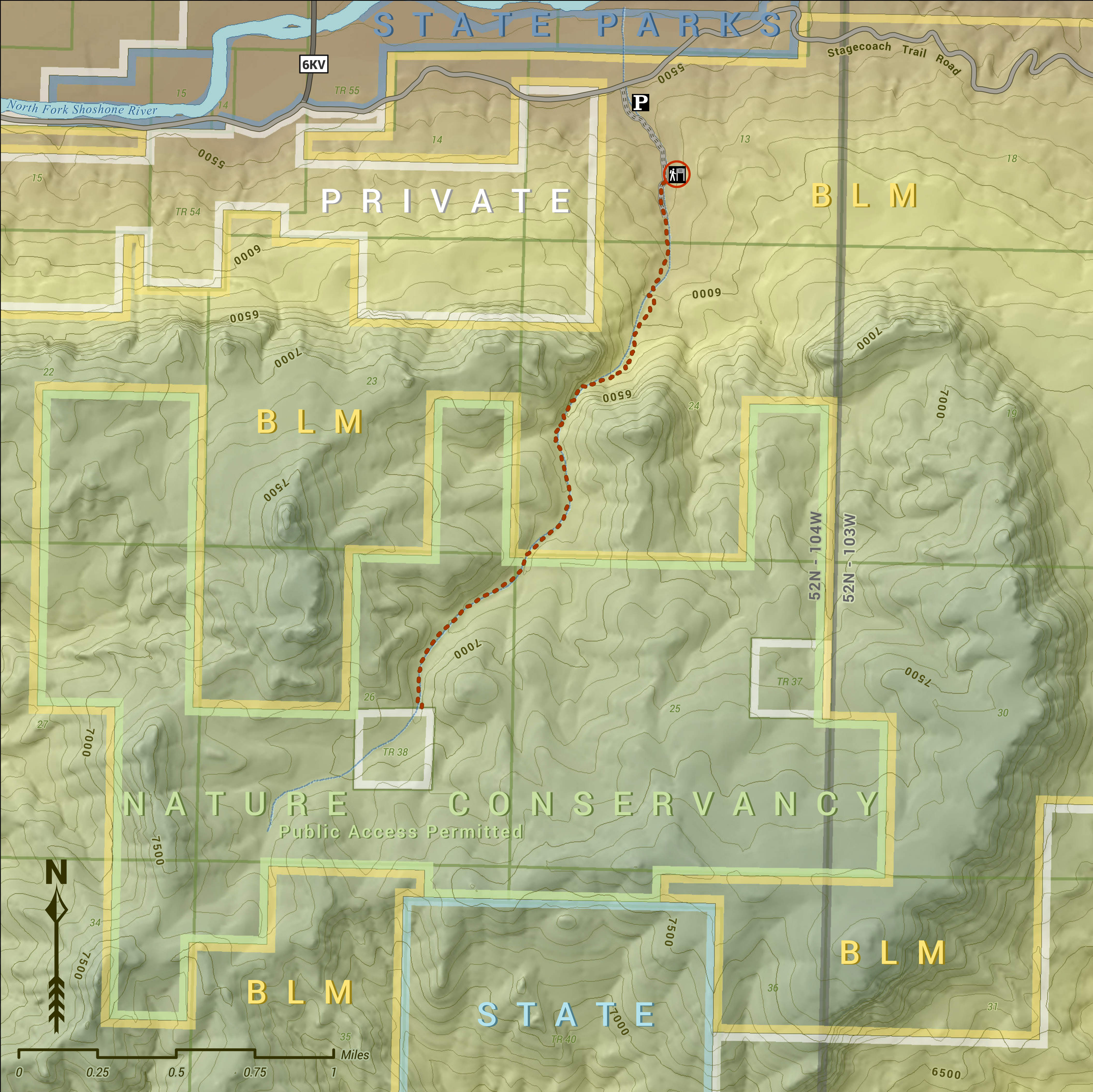


### TRAIL INFORMATION

Sheep Mountain Trail is a non-motorized trail that winds up an impressive box canyon to the top of Sheep Mountain. The trail is a popular destination due to its desirable settings and close proximity to both Buffalo Bill State Park and US Hwy 14, which connects Cody to Yellowstone National Park.

The trail starts at 5650 ft. elevation. After 2 miles, at 6900 ft. elevation, visitors can find an old cabin. This marks the end of the designated trail. From here, BLM-administered public land and The Nature Conservancy land is open to the public for further exploration. Many undeveloped routes can lead visitors to one of the several high points on Sheep Mountain.

The primitive road leading from Stagecoach Trail Road to the trailhead is only accessible with a high clearance vehicle. Parking for all vehicles is available on either side of this primitive road, just off of Stagecoach Trail Road. From here, it is 0.25 miles to the trailhead.



No warranty is made by the Bureau of Land Management as to the accuracy, reliability, or completeness of these data for individual or aggregate use with other data. Original data were compiled from various sources and may be updated without notification.

### LEGEND

- BLM LAND
- STATE LAND
- PRIVATE LAND
- THE NATURE CONSERVANCY
- STATE PARKS LAND

- YOU ARE HERE
- TRAILHEAD INFORMATION
- NON-MOTORIZED TRAIL
- PARKING AREA
- COUNTY ROAD MARKER

- TOWNSHIP BOUNDARY
- SECTION BOUNDARY
- PAVED ROAD
- GRAVEL ROAD
- PRIMITIVE 4X4 ROAD

1:10,000

Datum: NAD 83

Projection: Lambert

Conformal Conic

Contour Interval: 100'

BUREAU OF  
LAND  
MANAGEMENT  
Cody Field Office  
1002 Blackburn Street  
Cody, Wyoming 82414  
(307) 578-5900



Use this QR code or visit

<https://www.blm.gov/maps/georeferenced-PDFs>  
to download a free, georeferenced map of  
Sheep Mountain Trail.