

Wilderness Inventory Unit Index of Documents
Schaeffer Butte OR-034-050, 9 total pages

Page 1: Index Cover Sheet

[Page 2: Form 1 – Documentation of BLM Wilderness Inventory: Findings on Record](#)

[Page 5: Form 2 – Documentation of Current Wilderness Inventory Conditions](#)

[Page 8: Form 2 – Summary of Findings and Conclusion](#)

[Page 9: Wilderness Characteristics Overview – Schaeffer Butte OR-034-050 Map 1 of 1](#)

Prepared by:
U.S. Department of the Interior
Bureau of Land Management
Vale District Office
100 Oregon Street
Vale, Oregon 97918



H-6300-1-WILDERNESS INVENTORY MAINTENANCE IN BLM OREGON/WASHINGTON

APPENDIX B – INVENTORY AREA EVALUATION

Evaluation of Current Conditions:

- 1) Document and review the existing BLM wilderness inventory findings on file, if available, regarding the presence or absence of individual wilderness characteristics, using Form 1, below.

- 2) Consider relevant information regarding current conditions available in the office to identify and describe any changes to the existing information (use interdisciplinary (ID) team knowledge, aerial photographs, field observations, maps, etc.), and document your findings on Form 2, below.

When Citizen Information has been submitted regarding wilderness characteristics, document the submitted materials including: date of Submission; Name of District(s) and Field Office(s) Affected; Type of material Submitted (e.g. narrative, map, photo). Evaluate any submitted citizen information regarding the validity of proposed boundaries of the unit(s), the existence of roads and other boundary features, the size of the unit(s), and the presence or absence of wilderness characteristics based on relevant information available in the office (prior BLM inventories, ID team knowledge, aerial photographs, field observations, maps, etc.)

Conduct field reviews as necessary to verify information and to ascertain current conditions. Reach conclusions on current conditions including boundaries, size of areas and presence or absence of wilderness characteristics. Fully explain the basis for each conclusion on form 2, including any critical differences between BLM and citizen information.

Document your findings regarding current conditions for each inventoried area. Describe how the present conditions are similar to, or have changed from, the conditions documented in the original wilderness inventory. Document your findings on Form 2 for each inventory area. Cite to or attach data considered, including photographs, maps, GIS layers, field trip notes, project files, *etc.*

Year: 2009 **Unit Number/Name:** OR-034-050 -- Schaeffer Butte

FORM 1 -- DOCUMENTATION OF BLM WILDERNESS INVENTORY FINDINGS ON RECORD

1. Is there existing BLM wilderness inventory information on all or part of this area?

Yes No (If yes, and if more than one unit is within the area, list the names of those units.):

A.) Inventory Source(s) -- (X) Denotes all applicable BLM Inventory files, printed maps, or published BLM Decision documents with information pertaining to this unit.

Wilderness Inventories

- 1978 – BLM Wilderness Inventory Units OR-03-04-20; Schaeffer Butte, 3-60 (unpublished BLM documents in case files)
- April 1979 – *Wilderness -- Proposed Initial Inventory – Roadless Areas and Islands Which Clearly Do Not have Wilderness Characteristics, Oregon and Washington*

Wilderness Decision Documents

- August 1979 – *Wilderness Review – Initial Inventory, Final Decision on Public Lands Obviously Lacking Wilderness Characteristics and Announcement of Public Lands to be Intensively Inventoried for Wilderness Characteristics, Oregon and Washington* (green document)
- October 1979 – *Wilderness Review – Intensive Inventory - Oregon, Proposed Decision on the Intensive Wilderness Inventory of Selected Areas* (grey document).
- March 1980 – *Wilderness Review – Intensive Inventory; Final Decisions on 30 Selected Units in Southeast Oregon and Proposed Decisions on Other Intensively Inventoried Units in Oregon and Washington* (orange document)
- November 1980 - *Wilderness Inventory – Oregon and Washington, Final Intensive Inventory Decisions* (brown document)
- November 1981 *Stateline Intensive Wilderness Inventory Final Decision, Oregon, Idaho, Nevada, Utah* (tan document).

B.) Inventory Unit Name(s)/Number(s)

BLM OR-03-04-20; Schaeffer Butte 3-60

C.) Map Name(s)/Number(s)

- Final Decision – Initial Wilderness Inventory Map, August 1979, Oregon
- Proposed Decision -- Intensive Wilderness Inventory of Selected Areas Map, October 1979, Oregon
- Intensive Wilderness Inventory Map, March 1980, Oregon
- Intensive Wilderness Inventory --Final Decisions Map, November 1980, Oregon.
- November, 1981 *Stateline Intensive Wilderness Inventory Final Decision, Oregon, Idaho, Nevada, Utah* (tan document).

D.) BLM District(s)/Field Office(s)

Vale District Office/ Malheur Field Office

2. BLM Inventory Findings on Record

(Existing inventory information regarding wilderness characteristics (if more than one BLM inventory unit is associated with the area, list each unit and answer each question individually for each inventory unit):

Inventory Source: See above.

Unit#/ Name	Size (historic acres)	Natural Condition? Y/N	Outstanding Solitude? Y/N	Outstanding Primitive & Unconfined Recreation? Y/N	Supplemental Values? Y/N
(3-60) OR-03-04-20 Schaeffer Butte	9,020	*	N	N	*
TOTAL	9,020				

*-- These criteria were not specifically addressed in the inventory of this unit.

H-6300-1-WILDERNESS INVENTORY MAINTENANCE IN BLM OREGON/WASHINGTON

APPENDIX B – INVENTORY AREA EVALUATION

Evaluation of Current Conditions:

- 1) Document and review the existing BLM wilderness inventory findings on file, if available, regarding the presence or absence of individual wilderness characteristics, using Form 1, below.
- 2) Consider relevant information regarding current conditions available in the office to identify and describe any changes to the existing information (use interdisciplinary (ID) team knowledge, aerial photographs, field observations, maps, etc.), and document your findings on Form 2, below.

When Citizen Information has been submitted regarding wilderness characteristics, document the submitted materials including: date of Submission; Name of District(s) and Field Office(s) Affected; Type of material Submitted (e.g. narrative, map, photo). Evaluate any submitted citizen information regarding the validity of proposed boundaries of the unit(s), the existence of roads and other boundary features, the size of the unit(s), and the presence or absence of wilderness characteristics based on relevant information available in the office (prior BLM inventories, ID team knowledge, aerial photographs, field observations, maps, etc.)

Conduct field reviews as necessary to verify information and to ascertain current conditions. Reach conclusions on current conditions including boundaries, size of areas and presence or absence of wilderness characteristics. Fully explain the basis for each conclusion on form 2, including any critical differences between BLM and citizen information.

Document your findings regarding current conditions for each inventoried area. Describe how the present conditions are similar to, or have changed from, the conditions documented in the original wilderness inventory. Document your findings on Form 2 for each inventory area. Cite to or attach data considered, including photographs, maps, GIS layers, field trip notes, project files, *etc.*

FORM 2 -- DOCUMENTATION OF CURRENT WILDERNESS INVENTORY CONDITIONS

Unit Number/Name: OR-034-050 -- Schaeffer Butte

Note: On July 26, 2010 -- during the scoping period for the BLM Vale District's Southeastern Oregon Resource Management Plan Amendment -- the Vale District received a letter from Tree Top Ranches, L.P. (henceforth herein as Tree Top). Tree Top is a grazing allotment permittee of several allotments administered by Vale District. Its letter provides information about its Wallrock Allotment, which is associated with a portion of this OR-034-050 wilderness characteristics inventory maintenance unit. For reference, a hard copy of appropriate applicable portions of Tree Top's letter, affiliated maps and other information submitted by Tree Top are retained in this unit's file. This submitted information was considered and incorporated as appropriate for this BLM wilderness characteristics (WC) inventory maintenance.

Description of Current Conditions: [Include land ownership, location, topography, vegetation features and summary of major human uses/activities.]

1. Is the unit of sufficient size?

Yes X No

Description: Refer to the associated Map 1 of this inventory unit for its location. The boundary of the 8,638 acre unit is nearly the same as for the inventory unit identified in the late 1970's. The unit is bounded on the east by County Roads 3792 and 692, the south by County Road 692, and on its west and north by private land and a road crossing public land. The county and BLM natural-surfaced roads are in reasonably good passable condition when not water saturated, receiving a measure of mechanical maintenance as needed to keep them passable for relatively regular and continuous use.

2. Is the unit in a natural condition?

Yes X No N/A

Description: The unit is characterized by broken terrain separated by numerous and relatively short drainages associated with hills and ridges distributed through the unit. Elevations range from approximately 4,970 feet atop Knottingham Butte in the unit's southwest sector to 4,160 feet. Vegetation consists of typical native high desert shrub and both native and non-native grass species.

Refer to this unit's associated Map 1 for human imprints. They include 2.4 miles of rangeland fence, 3 earthen reservoirs, one water tank and associated 2.3 miles of buried pipeline with 3 troughs in the unit's far northeastern sector, a well and windmill, approximately 2.9 miles of 4 motorized primitive trails (most concentrated in the unit's northernmost area), and about a half mile of a nearly indistinguishable abandoned vehicle route (associated with the buried pipeline). The types, locations and extent of the few

developments present – relative to the unit’s size -- results in this unit appearing to be affected primarily by the forces of nature with the imprint of humans being substantially unnoticeable to the average visitor.

3. Does the unit have outstanding opportunities for solitude?

Yes _____ No N/A _____

Description: The majority of the unit’s width is about 2.5 miles with the northernmost tip quickly narrowing to a half mile. The unit is about 6 miles long. Inadequate size and/or density of the vegetation do not provide visual screening. The unit’s north half is typified more so by diverse though only moderate gradients associated with numerous small drainages, while higher elevations and an extended ridgeline with its runoff slopes are in the unit’s south half. Slopes have a slight to moderate topographic gradient throughout the unit. Although opportunities for solitude may be available, given the unit’s general characteristics – the absence of vegetative screening, its limited extent of topographic diversity relative to its size, its general configuration and narrow width – the unit does not provide outstanding opportunities for solitude.

4. Does the unit have outstanding opportunities for primitive and unconfined recreation?

Yes _____ No N/A _____

Description: Predominate dispersed recreational activities include hiking, horseback riding and general sightseeing, with these activities predominately associated with some hunting of common upland and big game species (chukar, deer and antelope). The natural character of the unit does provide for overnight backpacking activities, although this is not a typical use of or draw for the area. There are no special or unique features associated with the unit that would attract or command the special attention of recreating visitors. None of the mentioned activities, individually or collectively, provide outstanding opportunities for primitive and unconfined recreation within the unit.

5. Does the unit have supplemental values?

Yes _____ No _____ N/A

Description: None known.

Summary of Findings and Conclusion

Unit Name and Number: OR-034-050 -- Schaeffer Butte

Summary Results of Analysis:

- 1. Does the area meet any of the size requirements? X Yes No
- 2. Does the area appear to be natural? X Yes No
- 3. Does the area offer outstanding opportunities for solitude or a primitive and unconfined type of recreation? Yes X No NA
- 4. Does the area have supplemental values? Yes No X NA

Conclusion -- check one:

- The area, or a portion of the area, has wilderness character.
- X The area does not have wilderness character.

Prepared by: Robert Alward
Robert Alward, Wilderness Planner contractor

Team Members:

<u>Steve Christensen</u>	<u>4-13-2009</u>
Steve Christensen, Rangeland Management Specialist	Date
<u>Shamus Rockefeller</u>	<u>4/13/09</u>
Shamus Rockefeller, Soil Scientist	Date
<u>Dave Draheim</u>	<u>4.13.2009</u>
Dave Draheim, Outdoor Recreation Planner	Date
<u>Jonathan Westfall</u>	<u>04/13/2009</u>
Jon Westfall, Geologist	Date
<u>Brent L. Grasty</u>	<u>4/13/09</u>
Brent Grasty, GIS Coordinator	Date

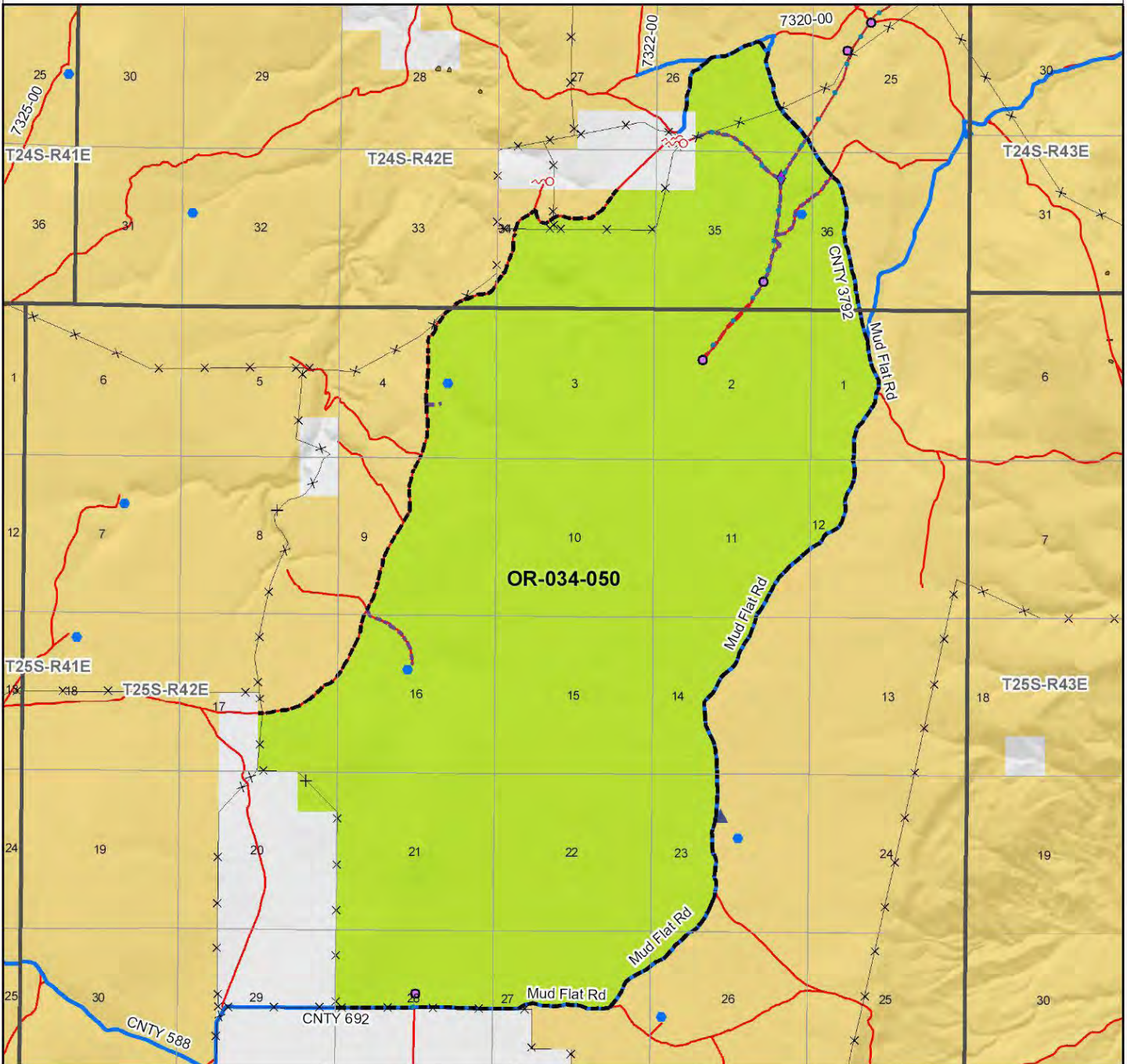
(NOTE: Previous staff members who reviewed this unit include Botanist Jean Finley (retired 7/2008), and Wildlife Biologist Technician Sandy Vistine Ambor (transferred 8/2008)).

Approved by: Pat Ryan
Pat Ryan, Malheur Resource Area Field Manager

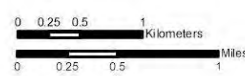
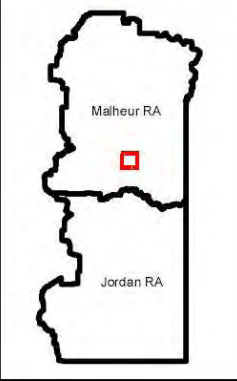
12/13/10
Date

This form documents information that constitutes an inventory finding on wilderness characteristics. It does not represent a formal land use allocation or a final agency decision subject to administrative remedies under either 43 CFR parts 4 or 1610.5-2.

Wilderness Characteristics - Overview Schaeffer Butte - OR-034-050 - Map 1 of 1



Legend	
Developed Spring	Route Types - BLM Determination
Wildlife Guzzler	Boundary Road
Earthen Reservoir	Motorized Primitive Trail (MPT)
Pipeline	Discontinued Use
Trough	Routes - Outside Wild Char Unit
Fence	County
Storage Tank	Major Highway
Surface Mining Disturbance	BLM Numbered & Other Routes
Sage Grouse Lek	Land Ownership
Special Status Plant	Bureau of Land Management
BLM Wild Char Inventory Unit	State
Wilderness Study Area	Private
Mineral Material Site	Other Federal Land
Road/Utility Right-of-Way	
Major Water Body	



U.S. DEPARTMENT OF THE INTERIOR
BUREAU OF LAND MANAGEMENT



VALE DISTRICT
January 9, 2009

No warranty is made by the Bureau of Land Management as to the accuracy, reliability, or completeness of these data for individual or aggregate use with other data. Original data were compiled from various sources. This information may not meet National Map Accuracy Standards. This product was developed through digital means and may be updated without notification.

--FINAL--