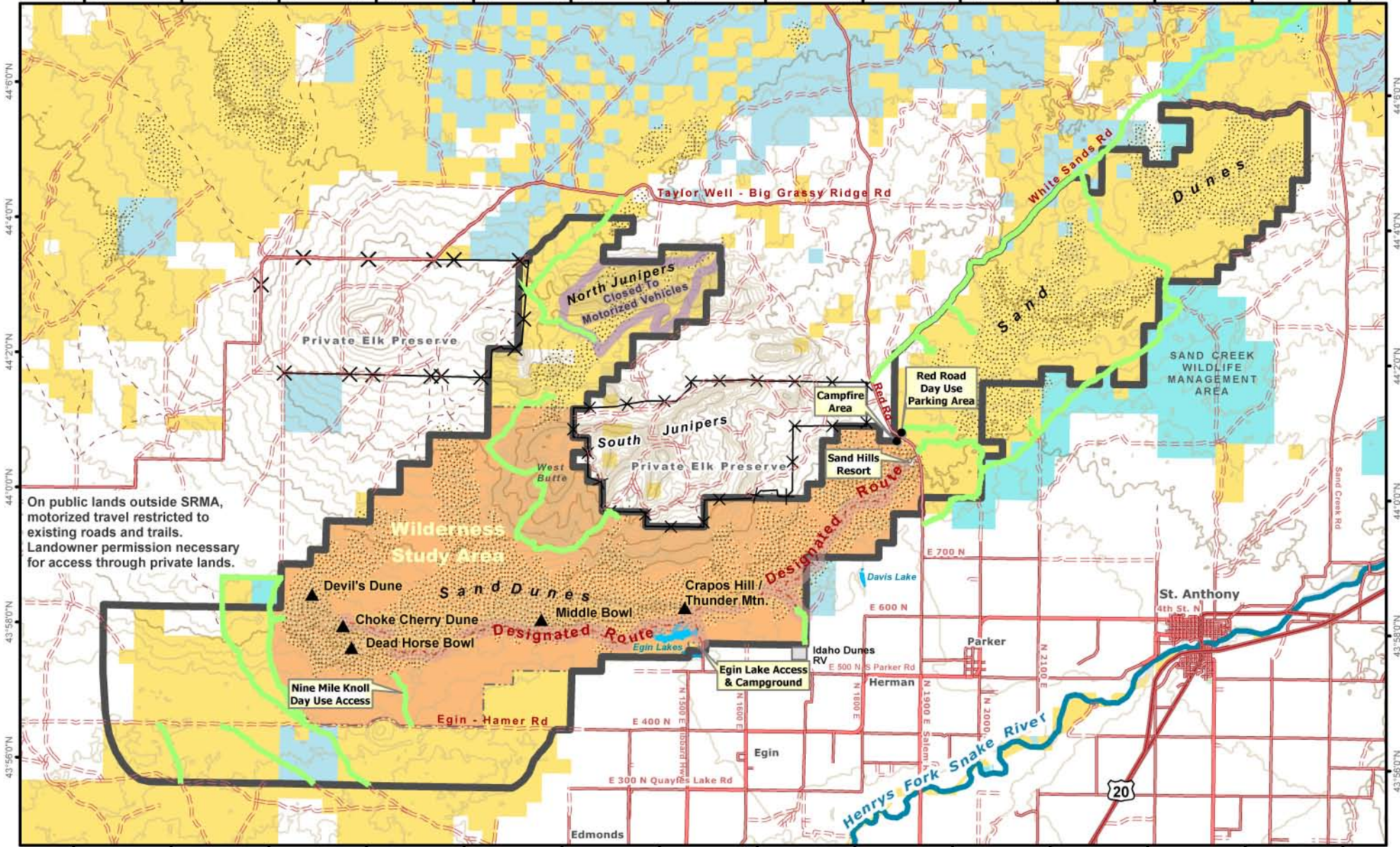




St Anthony Sand Dunes Special Recreation Management Area

112°40'W 112°20'W 112°00'W 111°58'W 111°56'W 111°54'W 111°52'W 111°50'W 111°48'W 111°46'W 111°44'W 111°42'W 111°40'W 111°38'W



On public lands outside SRMA, motorized travel restricted to existing roads and trails. Landowner permission necessary for access through private lands.

112°40'W 112°20'W 112°00'W 111°58'W 111°56'W 111°54'W 111°52'W 111°50'W 111°48'W 111°46'W 111°44'W 111°42'W 111°40'W 111°38'W

Map Printed 09-2012 by the Bureau of Land Management Upper Snake Field Office 1405 Holtpark Drive, Idaho Falls, ID 208-524-7500



Legend

- Only Designated Routes Open for Motorized Travel through Vegetated Areas within the SRMA
- Open Sand in SRMA Open for Motorized Travel
- Special Recreation Management Area (SRMA)
- Completely Closed to Motorized Vehicles
- BLM Wilderness Study Area (WSA)
- Surface Management Agency
- Bureau of Land Management (BLM)
- Private
- State of Idaho
- Idaho Fish and Game



No warranty is made by the Bureau of Land Management. The accuracy, reliability, or completeness of these data for individual use or aggregate use with other data is not guaranteed. The following cannot be made Section 508 compliant. For help with its data or information, please contact the BLM Idaho State Office Webmaster at 208-373-4000.

44°50'N 44°40'N 44°30'N 44°20'N 44°10'N 43°58'N 43°56'N