

**Rogue River Tributaries
Wild & Scenic
Rivers**



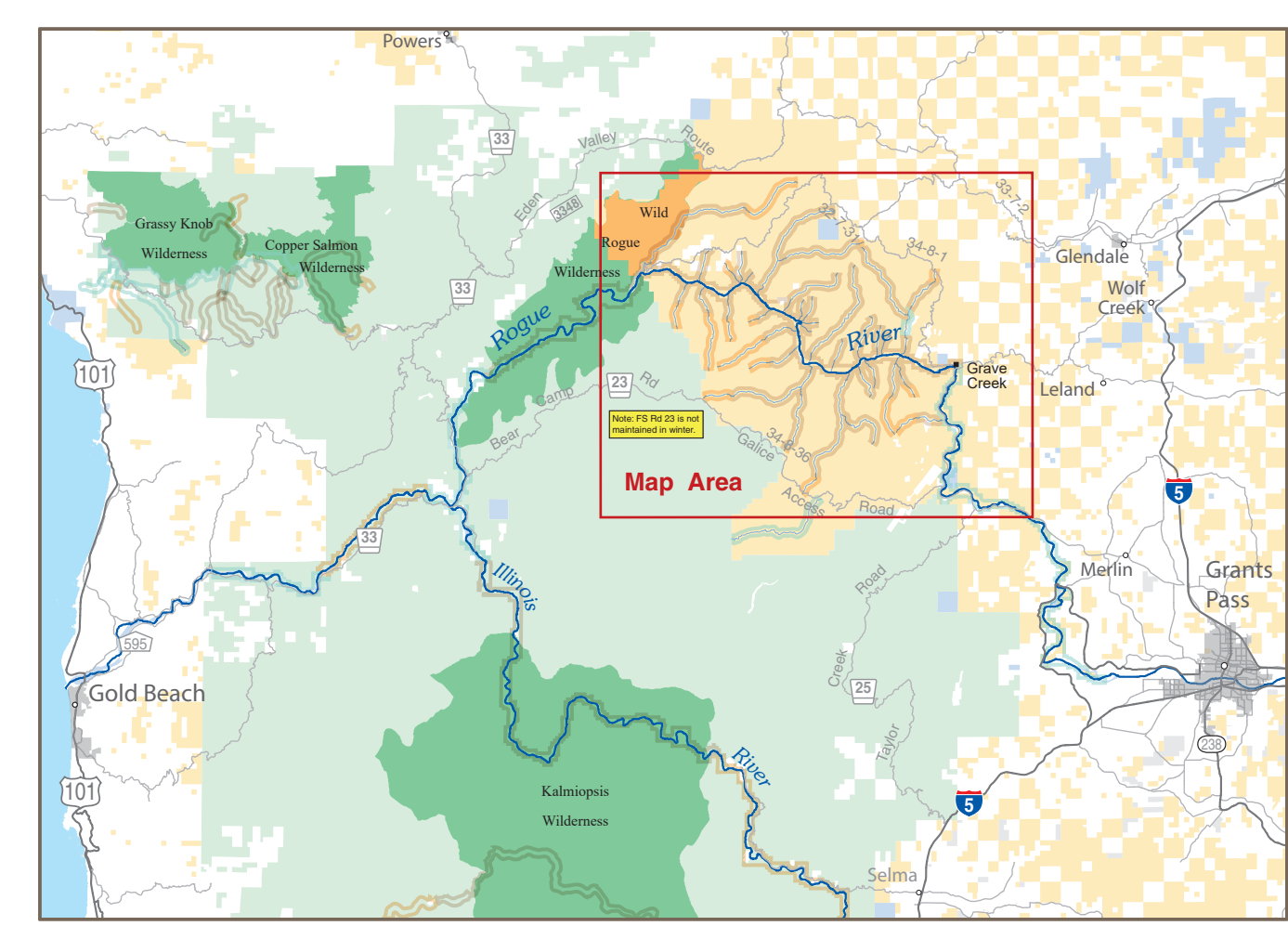
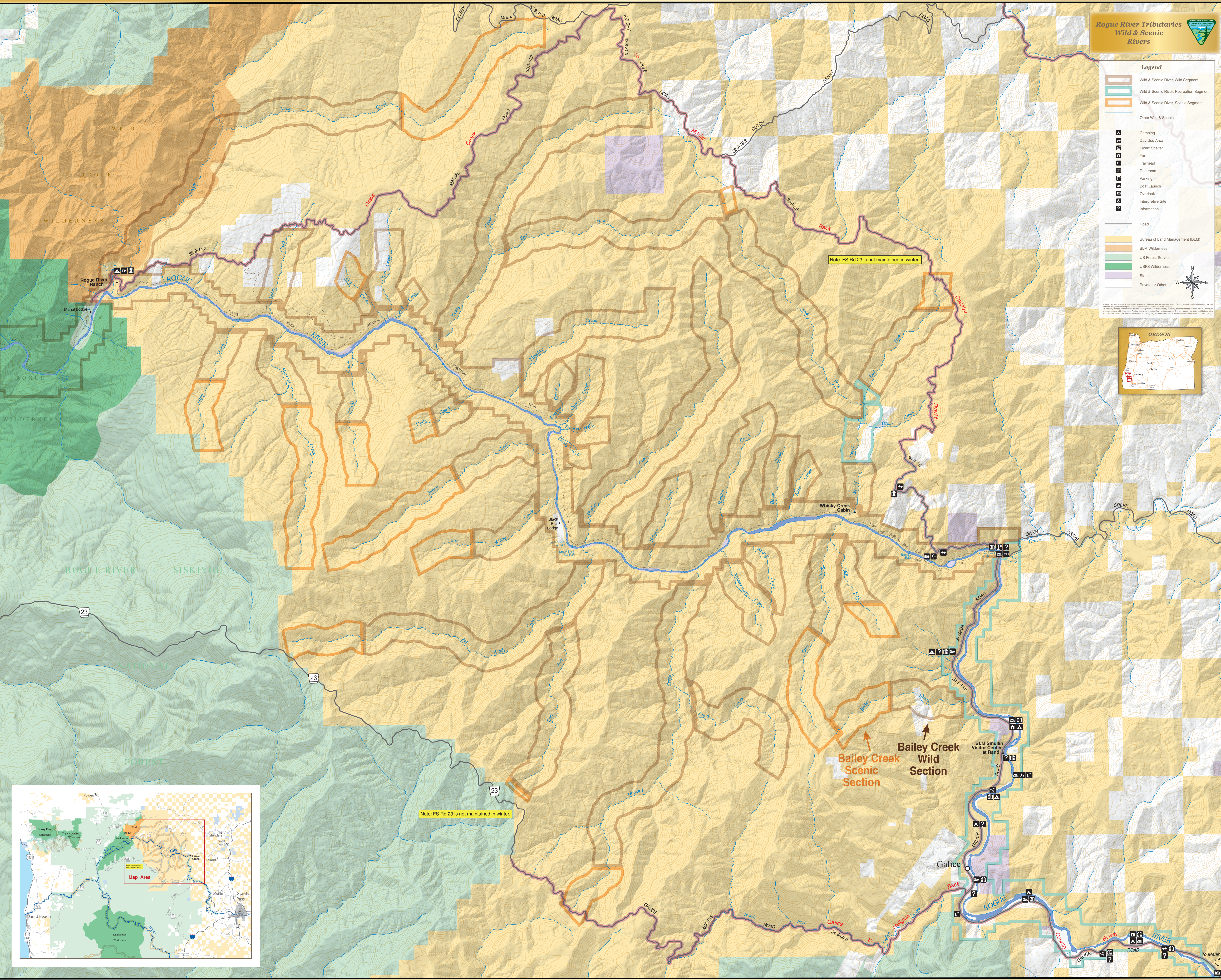
Legend

- Wild & Scenic River, Wild Segment
- Wild & Scenic River, Recreation Segment
- Wild & Scenic River, Scenic Segment
- Other Wild & Scenic

- A Camping
- D Day Use Area
- P Picnic Shelter
- Y Yurt
- T Trailhead
- R Restroom
- P Parking
- B Boat Launch
- O Overlook
- I Interpretive Site
- I Information

- Road

- Bureau of Land Management (BLM)
- BLM Wilderness
- US Forest Service
- USFS Wilderness
- State
- Private or Other



Note: FS Rd 23 is not maintained in winter.

Bailey Creek Scenic Section

Bailey Creek Wild Section

BLM Smullin Visitor Center at Rand

Galice

To Merrill, I-5