

Wilderness Inventory Unit Index of Documents
Red Lookout Butte OR-036-048, 9 total pages

Page 1: Index Cover Sheet

[Page 2: Form 1 – Documentation of BLM Wilderness Inventory: Findings on Record](#)

[Page 5: Form 2 – Documentation of Current Wilderness Inventory Conditions](#)

[Page 8: Form 2 – Summary of Findings and Conclusion](#)

[Page 9: Wilderness Characteristics Overview–Red Lookout Butte OR-036-048 Map 1](#)

Prepared by:
U.S. Department of the Interior
Bureau of Land Management
Vale District Office
100 Oregon Street
Vale, Oregon 97918



H-6300-1-WILDERNESS INVENTORY MAINTENANCE IN BLM OREGON/WASHINGTON

APPENDIX B – INVENTORY AREA EVALUATION

Evaluation of Current Conditions:

- 1) Document and review the existing BLM wilderness inventory findings on file, if available, regarding the presence or absence of individual wilderness characteristics, using Form 1, below.
- 2) Consider relevant information regarding current conditions available in the office to identify and describe any changes to the existing information (use interdisciplinary (ID) team knowledge, aerial photographs, field observations, maps, etc.), and document your findings on Form 2, below.

When Citizen Information has been submitted regarding wilderness characteristics, document the submitted materials including: date of Submission; Name of District(s) and Field Office(s) Affected; Type of material Submitted (e.g. narrative, map, photo). Evaluate any submitted citizen information regarding the validity of proposed boundaries of the unit(s), the existence of roads and other boundary features, the size of the unit(s), and the presence or absence of wilderness characteristics based on relevant information available in the office (prior BLM inventories, ID team knowledge, aerial photographs, field observations, maps, etc.)

Conduct field reviews as necessary to verify information and to ascertain current conditions. Reach conclusions on current conditions including boundaries, size of areas and presence or absence of wilderness characteristics. Fully explain the basis for each conclusion on form 2, including any critical differences between BLM and citizen information.

Document your findings regarding current conditions for each inventoried area. Describe how the present conditions are similar to, or have changed from, the conditions documented in the original wilderness inventory. Document your findings on Form 2 for each inventory area. Cite to or attach data considered, including photographs, maps, GIS layers, field trip notes, project files, *etc.*

Year: 2009 Unit Number/Name: OR-036-048 -- Red Lookout Butte

FORM 1 -- DOCUMENTATION OF BLM WILDERNESS INVENTORY FINDINGS ON RECORD

1. Is there existing BLM wilderness inventory information on all or part of this area?

NOTE: A 1970's BLM-generated mylar overlay map of Vale District's Southern (i.e. Jordan) RA Unit Resource Analysis/Management Framework Plan (URA/MFP) depicts this area to be within a larger OR-03-08-26 WC inventory unit. However, no associated supporting written documentation regarding this original unit can be located in Vale District files at this time. Furthermore, the area within OR-03-08-26 that, in part, represents the present OR-036-48 WC inventory unit is not addressed in any of the late 1970's OR BLM WC decision documents and is not displayed with a WC identifier number on any of their affiliated reference maps.

In the late 1970's, a portion of OR-03-08-26 was, in part, included in the BLM's late 1970's OR-02-78 WC inventory unit of Burns BLM District. Specifically, the present OR-036-048 is the same as what was identified in the late 1970's as unit OR-02-74L unit of the Burns BLM District. Identified in a more recent date (on a work map) by Burns District as "2-78L" (Vale District office received map on 5/12/2009). Official records for the unit are retained at the Burns District office.

Yes X No (If yes, and if more than one unit is within the area, list the names of those units.):

A.) **Inventory Source(s)** -- (X) Denotes all applicable BLM Inventory files, printed maps, or published BLM Decision documents with information pertaining to this unit.

SEE "NOTE", ABOVE.

Wilderness Inventories

- (X) 1978-1980 – Within BLM Wilderness Inventory Unit OR-03-08-26 (Vale District, unpublished BLM document map), and OR-02-74L then 2-78L of Burns District. **See "NOTE", above, under "1."**
- () April 1979 – *Wilderness -- Proposed Initial Inventory – Roadless Areas and Islands Which Clearly Do Not have Wilderness Characteristics, Oregon and Washington*

Wilderness Decision Documents

- (X) August 1979 – *Wilderness Review – Initial Inventory, Final Decision on Public Lands Obviously Lacking Wilderness Characteristics and Announcement of Public Lands to be Intensively Inventoried for Wilderness Characteristics, Oregon and Washington* (green document)
- () October 1979 – *Wilderness Review – Intensive Inventory - Oregon, Proposed Decision on the Intensive Wilderness Inventory of Selected Areas* (grey document)

- (X) March 1980 – *Wilderness Review – Intensive Inventory; Final Decisions on 30 Selected Units in Southeast Oregon and Proposed Decisions on Other Intensively Inventoried Units in Oregon and Washington* (orange document) (**NOTE: Is “2-74L”**)
- () November 1980 - *Wilderness Inventory – Oregon and Washington, Final Intensive Inventory Decisions* (brown document)
- () November 1981 *Stateline Intensive Wilderness Inventory Final Decision, Oregon, Idaho, Nevada, Utah* (tan document)

B.) Inventory Unit Name(s)/Number(s)

Part of larger BLM OR-03-08-26 Vale District WC inventory unit; and OR-02-74L then 2-78L of Burns District. **See NOTE”, above, under “1.”**

C.) Map Name(s)/Number(s)

- (X) Final Decision – Initial Wilderness Inventory Map, August 1979, Oregon
- (X) Proposed Decision -- Intensive Wilderness Inventory of Selected Areas Map, October 1979, Oregon
- (X) Intensive Wilderness Inventory Map, March 1980, Oregon (**NOTE: is “2-74L”.**)
- () Intensive Wilderness Inventory --Final Decisions Map, November 1980, Oregon
- () November, 1981 *Stateline Intensive Wilderness Inventory Final Decision, Oregon, Idaho, Nevada, Utah* (tan document)

D.) BLM District(s)/Field Office(s)

Vale District/Jordan Resource Area

2. BLM Inventory Findings on Record

(Existing inventory information regarding wilderness characteristics (if more than one BLM inventory unit is associated with the area, list each unit and answer each question individually for each inventory unit):

Inventory Source: See above.

Unit#/Name	Size (historic acres)	Natural Condition? Y/N	Outstanding Solitude? Y/N	Outstanding Primitive & Unconfined Recreation? Y/N	Supplemental Values? Y/N
OR-03-08-26* ; OR-02-74L and 2-78L*	7,100	Y	N	N	N
TOTAL	7,100				

* See **“NOTE”**, above, under “1.” Is depicted as “2-74L” on March 1980 Map.; as “2078L” on a Burns District work map which Vale District received on May 12, 2009.

H-6300-1-WILDERNESS INVENTORY MAINTENANCE IN BLM OREGON/WASHINGTON

APPENDIX B – INVENTORY AREA EVALUATION

Evaluation of Current Conditions:

- 1) Document and review the existing BLM wilderness inventory findings on file, if available, regarding the presence or absence of individual wilderness characteristics, using Form 1, below.
- 2) Consider relevant information regarding current conditions available in the office to identify and describe any changes to the existing information (use interdisciplinary (ID) team knowledge, aerial photographs, field observations, maps, etc.), and document your findings on Form 2, below.

When Citizen Information has been submitted regarding wilderness characteristics, document the submitted materials including: date of Submission; Name of District(s) and Field Office(s) Affected; Type of material Submitted (e.g. narrative, map, photo). Evaluate any submitted citizen information regarding the validity of proposed boundaries of the unit(s), the existence of roads and other boundary features, the size of the unit(s), and the presence or absence of wilderness characteristics based on relevant information available in the office (prior BLM inventories, ID team knowledge, aerial photographs, field observations, maps, etc.)

Conduct field reviews as necessary to verify information and to ascertain current conditions. Reach conclusions on current conditions including boundaries, size of areas and presence or absence of wilderness characteristics. Fully explain the basis for each conclusion on form 2, including any critical differences between BLM and citizen information.

Document your findings regarding current conditions for each inventoried area. Describe how the present conditions are similar to, or have changed from, the conditions documented in the original wilderness inventory. Document your findings on Form 2 for each inventory area. Cite to or attach data considered, including photographs, maps, GIS layers, field trip notes, project files, *etc.*

FORM 2 -- DOCUMENTATION OF CURRENT WILDERNESS INVENTORY CONDITIONS

Unit Number/Name: OR-036-048 -- Red Lookout Butte

Description of Current Conditions: [Include land ownership, location, topography, vegetation features and summary of major human uses/activities.]

1. Is the unit of sufficient size?

Yes X No _____

Description: Refer to this inventory unit's associated Map 1 for its location. The 5,443 acre unit was part of original inventory unit OR-03-08-26 of the later 1970's in Vale District, and as OR-02-74L which later was identified as 2-78L of Burns District. The unit is bounded by BLM roads (including 6316-00) on the west and north sides, private property on the east side, and a utility right of way corridor on its south side. The BLM roads receive mechanical maintenance as needed to keep them passable on a regular and continuous (seasonal) basis. Two 40 acre and an 80 acre private inholdings are also features of the unit's boundary.

2. Is the unit in a natural condition?

Yes X No _____ N/A _____

Description: The topography is flat to gently rolling terrain with a somewhat rounded configuration of approximately 3 miles in width and height. Vegetation is predominately sage brush and both native and non-native grasses.

See this unit's associated Map 1 for location of human imprints. There are 2.8 miles of 2 primitive motorized trails (MPTs), 3.0 miles of rangeland fence, and 2.1 total miles of two branches of a pipeline system with 4 associated troughs. The unit exhibits a near-natural appearing condition throughout because the human imprints are several miles from one another and the rangeland fence and MPTs generally blend in with the unit's vegetation and rolling topography. The unit appears to be affected primarily by the forces of nature with the imprint of humans substantially unnoticeable to the average visitor.

3. Does the unit have outstanding opportunities for solitude?

Yes _____ No X N/A _____

Description: The unit is approximately 3 miles in width and height. The unit's size in combination with limited topographic features and the lack of vegetative screening would

not provide a visitor outstanding opportunities to experience a sense of seclusion. Also, an unavoidable sight outside but abutting the unit, which detracts from a sense of solitude inside portions of the unit, is the high standing power line within the southern boundary's utility corridor right-of-way. Based on the reasons afore mentioned, the unit does not provide outstanding opportunities for solitude.

4. Does the unit have outstanding opportunities for primitive and unconfined recreation?

Yes _____ No X N/A _____

Description: There are no unique sights or attractions within the unit to draw visitors. Opportunities for primitive and unconfined types of recreation are available in the unit, including hunting of common game species (primarily deer and chukar), but the activity and game species do not provide for outstanding primitive and unconfined recreation opportunities. Other opportunities for activities within the unit such as hiking, backpacking, horseback riding, and photography are not outstanding because the unit lacks scenic quality, diversity in landforms, and/or challenging terrain.

5. Does the unit have supplemental values?

Yes X No _____ N/A _____

Description: Solitary Milkvetch, a BLM special status plant species, has been observed in the northwest area of the unit.

Summary of Findings and Conclusion

Unit Name and Number: OR-036-048 – Red Lookout Butte

Summary Results of Analysis:

- 1. Does the area meet any of the size requirements? Yes No
- 2. Does the area appear to be natural? Yes No
- 3. Does the area offer outstanding opportunities for solitude or a primitive and unconfined type of recreation? Yes No NA
- 4. Does the area have supplemental values? Yes No NA

Conclusion -- check one:

- The area, or a portion of the area, has wilderness character.
- The area does not have wilderness character.

Prepared by: 
Robert Alward, Wilderness Planner, contractor

Team Members:

<u></u>	<u>4/29/10</u>
Richard White, Range Management Specialist	Date
<u></u>	<u>5/19/10</u>
Marcy Egger, Range Management Specialist	Date
<u></u>	<u>2/10/10</u>
Dave Draheim, Outdoor Recreation Planner	Date
<u></u>	<u>5/17/10</u>
Jack Wenderoth, Planning Contractor	Date
<u></u>	<u>4-28-2010</u>
Jon Sadowski, Environmental Contractor	Date
<u></u>	<u>5-14-10</u>
Eian Ray, GIS Specialist, contractor	Date
<u></u>	<u>5/18/10</u>
Brent Grasty, GIS Coordinator	Date

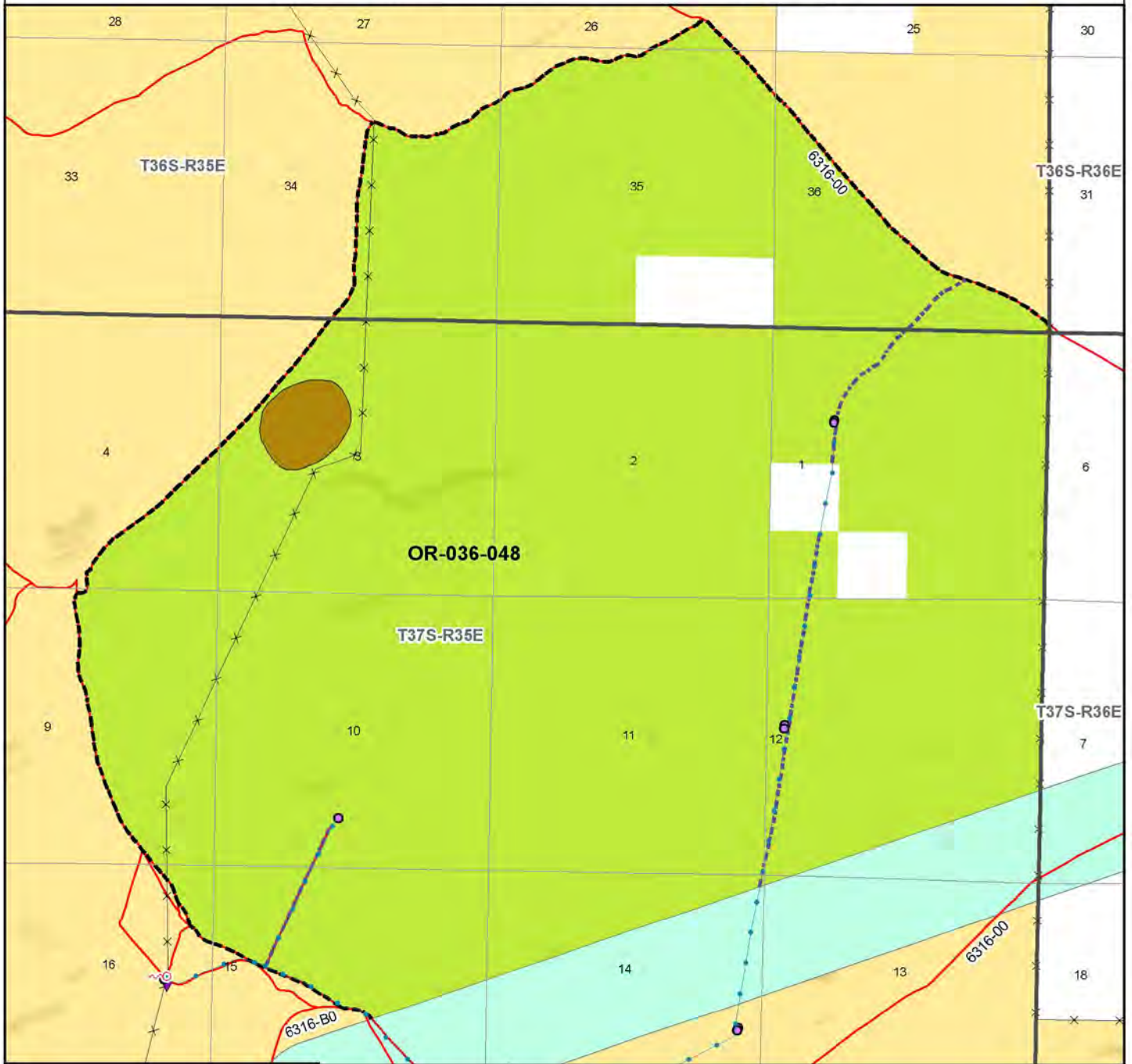
Approved by:

 7/19/2010
Carolyn Freeborn, Jordan Resource Area Field Manager Date

This form documents information that constitutes an inventory finding on wilderness characteristics. It does not represent a formal land use allocation or a final agency decision subject to administrative remedies under either 43 CFR parts 4 or 1610.5-2.

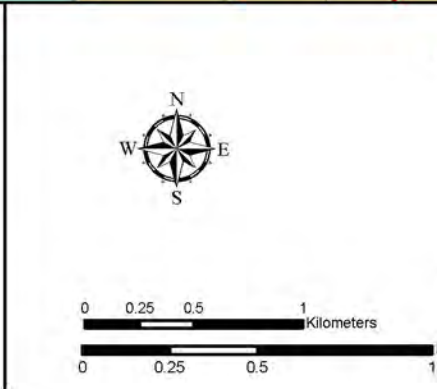
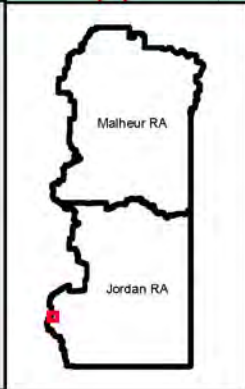
Wilderness Characteristics - Overview

Red Lookout Butte - OR-036-048 - Map 1 of 1



Legend

<ul style="list-style-type: none"> Developed Spring Wildlife Guzzler Earthen Reservoir Pipeline Trough Fence Storage Tank Surface Mining Disturbance Sage Grouse Lek Special Status Plant BLM Wild Char Inventory Unit Wilderness Study Area Mineral Material Site Road/Utility Right-of-Way Major Water Body 	<p>Route Type - BLM Determination</p> <ul style="list-style-type: none"> Boundary Road Motorized Primitive Trail (MPT) Discontinued Use <p>Routes - Outside Wild Char Unit</p> <ul style="list-style-type: none"> County Major Highway BLM Numbered & Other Routes <p>Land Ownership</p> <ul style="list-style-type: none"> Bureau of Land Management State Private Other Federal Land
---	---



U.S. DEPARTMENT OF THE INTERIOR
BUREAU OF LAND MANAGEMENT

VALE DISTRICT
July 8, 2009

No warranty is made by the Bureau of Land Management as to the accuracy, reliability, or completeness of these data for individual or aggregate use with other data. Original data were compiled from various sources. This information may not meet National Map Accuracy Standards. This product was developed through digital means and may be updated without notification.

--FINAL--