

# MEMO

April 27, 2012

**To:** WC Files – Vale District WC inventory units OR-036-083 Purser Ridge and OR-036-097 Split Rock

**From:** Pat Ryan, Field Manager, Jordan/Malheur Resource Areas, Vale District  
Robert Alward, Wilderness Planner, contractor, Vale District *RA*

**Subject:** Two Vale District WC Units combined with Boise District WC unit ID-106-24 Split Rock

In March, 2012, Vale District received a Form 2 and affiliated working maps (GIS-generated) and e-mails from the Boise District's Marsing Field Office regarding its 2012 WC inventory unit ID-106-24, Split Rock.

As a result of this received information: (1) Vale District's 2011 WC inventory unit OR-036-083 (with a 4/5/2011 Vale District WC inventory finding) and its new (3/2012) OR-036-097 WC unit are both determined to be contiguous to BLM Boise District's ID-106-24 Split Rock WC inventory unit; and (2) the current (2012) update of the 2011 OR-036-083 unit -- from this point forward -- now also includes the area of OR-036-097 (thus, OR-036-097 -- from this point forward -- is no longer a separate WC inventory unit within Vale District).

Respectively, within Vale District, **refer to Vale District WC files for the 2012 OR-036-083 Purser Ridge** unit for combined and complete WC inventory information for it and the contiguous ID-106-24 Split Rock inventory unit. (See the attached 2012 Map 1 for Purser Ridge, OR-036-083 / Split Rock, ID-106-24.)

As documented herein, the OR-036-097 unit has now been combined as part of a 2012 updated 5,696 acre OR-036-083 Purser Ridge WC inventory unit. This 2012 Vale District WC unit has four separate parcels (3,126; 2,350; 71; and 149 acres) – each contiguous to Boise District's ID-106-24 Split Rock WC unit. Since Vale District's WC inventory of its original OR-036-083 unit (approved April 4, 2011), it is apparent with this updated 2012 OR-036-083 unit that -- due to the number, extent and close proximity (to each other) of human developments in each of its two largest parcels – it still does not meeting the natural condition criteria of WC inventory. See supporting documentation: (A) Vale District's April 17, 2012 Map 1 (which reflects, in part, the updated OR-036-083 unit with its human imprints), and (B) the April 5, 2011 Vale District approved Form 2 of the initial OR-036-083 WC inventory unit.

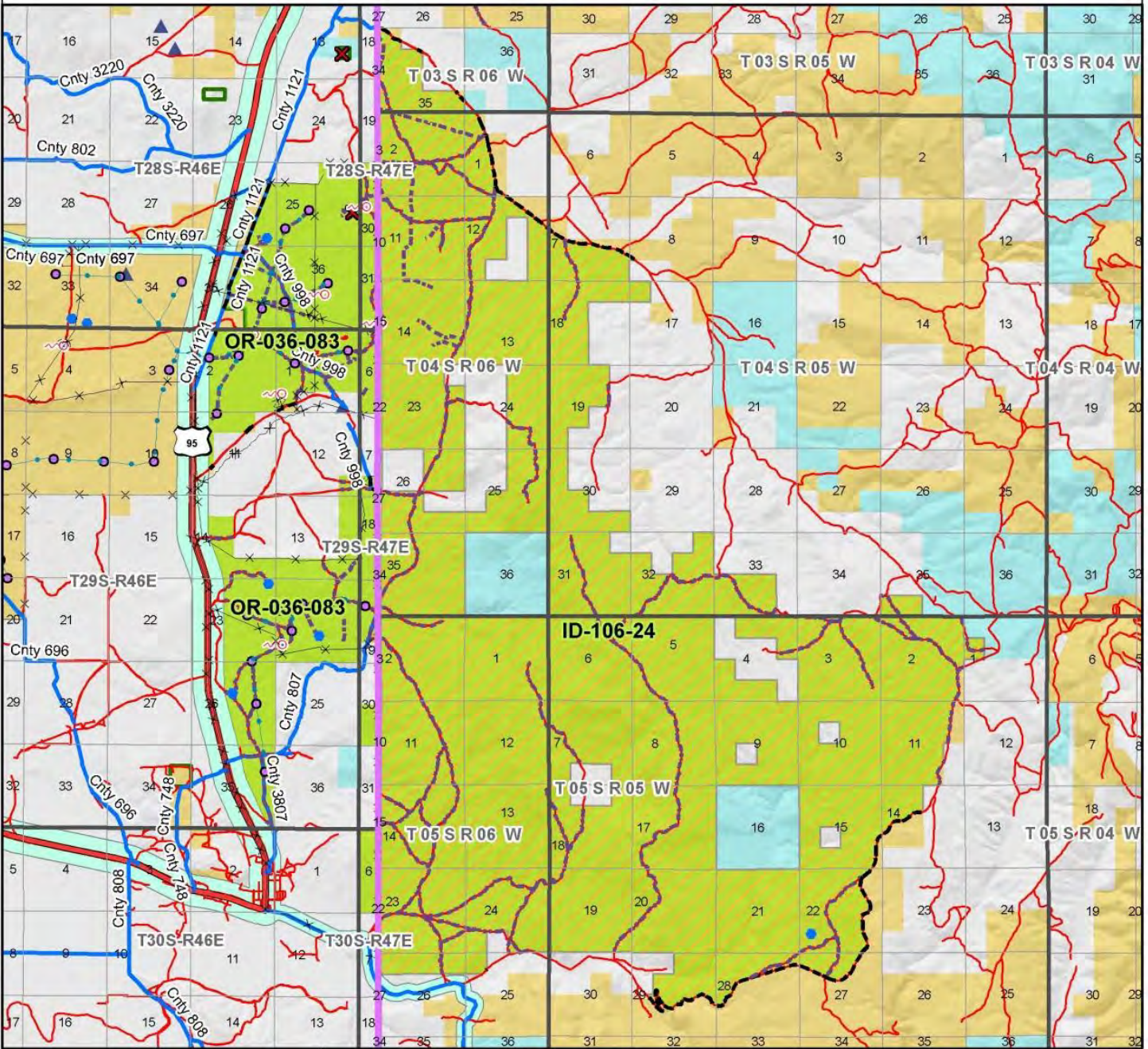
Furthermore, this updated 2012 OR-036-083 unit -- when combined with the contiguous 25,111 acre ID-106-24 Split Rock unit -- would not result in a change of Boise District's current WC inventory finding that its ID-106-24 unit does not meet the natural condition criteria. Respectively, in summary, the contiguous ID-106-24 and updated OR-036-083 combined together – as a whole (30,810 acres) -- does not meet the natural condition criteria; and, thus, does not meet a WC inventory requirement in order to possess wilderness character.



# Wilderness Characteristics - Overview

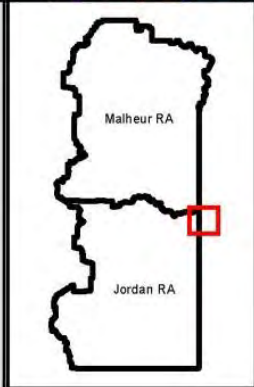
## Purser Ridge, OR-036-083 / Split Rock, ID-106-24

### Map 1 of 1



**Legend**

<ul style="list-style-type: none"> <li><span style="color: red;">S</span> Developed Spring</li> <li><span style="color: red;">▲</span> Wildlife Guzzler</li> <li><span style="color: blue;">●</span> Earthen Reservoir</li> <li><span style="color: blue;">—</span> Pipeline</li> <li><span style="color: purple;">■</span> Trough</li> <li><span style="color: black;">X</span> Fences</li> <li><span style="color: purple;">◆</span> Storage Tank</li> <li><span style="color: black;">X</span> Surface Mining Disturbance</li> <li><span style="color: blue;">▲</span> Sage Grouse Lek</li> <li><span style="color: brown;">■</span> Special Status Plant</li> <li><span style="color: green;">■</span> OR Wild Char Inventory Unit</li> <li><span style="color: orange;">■</span> ID Wild Char Inventory Unit</li> <li><span style="color: orange;">■</span> Wilderness Study Area</li> <li><span style="color: green;">■</span> Mineral Material Site</li> <li><span style="color: lightblue;">■</span> Road/Utility Right-of-Way</li> <li><span style="color: blue;">■</span> Major Water Body</li> </ul>	<p><b>Route Types - BLM Determination</b></p> <ul style="list-style-type: none"> <li><span style="color: black;">—</span> Boundary Road</li> <li><span style="color: purple;">—</span> Motorized Primitive Trail (MPT)</li> <li><span style="color: red;">—</span> Discontinued Use</li> </ul> <p><b>Routes - Outside Wild Char Unit</b></p> <ul style="list-style-type: none"> <li><span style="color: blue;">—</span> County</li> <li><span style="color: red;">—</span> Major Highway</li> <li><span style="color: red;">—</span> BLM Numbered &amp; Other Routes</li> </ul> <p><b>Land Ownership</b></p> <ul style="list-style-type: none"> <li><span style="color: yellow;">■</span> Bureau of Land Management</li> <li><span style="color: lightblue;">■</span> State</li> <li><span style="color: white;">■</span> Private</li> <li><span style="color: orange;">■</span> Other Federal Land</li> <li><span style="color: purple;">—</span> District Boundary</li> </ul>
---	---



0 0.5 1 2 Kilometers

0 0.5 1 2 Miles

**U.S. DEPARTMENT OF THE INTERIOR**  
BUREAU OF LAND MANAGEMENT

**VALE DISTRICT**  
April 17, 2012

No warranty is made by the Bureau of Land Management as to the accuracy, reliability, or completeness of these data for individual or aggregate use with other data. Original data were compiled from various sources. This information may not meet National Map Accuracy Standards. This product was developed through digital means and may be updated without notification.

**--FINAL--**