

Wilderness Inventory Unit Index of Documents
Purser Ridge OR-036-083, 10 total pages

Page 1: Index Cover Sheet

[Page 2: Form 1 – Documentation of BLM Wilderness Inventory: Findings on Record](#)

[Page 5: Form 2 – Documentation of Current Wilderness Inventory Conditions](#)

[Page 9: Form 2 – Summary of Findings and Conclusion](#)

[Page 10: Wilderness Characteristics Overview – Purser Ridge OR-036-083 Map 1 of 1](#)

Prepared by:
U.S. Department of the Interior
Bureau of Land Management
Vale District Office
100 Oregon Street
Vale, Oregon 97918



H-6300-1-WILDERNESS INVENTORY MAINTENANCE IN BLM OREGON/WASHINGTON

APPENDIX B – INVENTORY AREA EVALUATION

Evaluation of Current Conditions:

- 1) Document and review the existing BLM wilderness inventory findings on file, if available, regarding the presence or absence of individual wilderness characteristics, using Form 1, below.
- 2) Consider relevant information regarding current conditions available in the office to identify and describe any changes to the existing information (use interdisciplinary (ID) team knowledge, aerial photographs, field observations, maps, etc.), and document your findings on Form 2, below.

When Citizen Information has been submitted regarding wilderness characteristics, document the submitted materials including: date of Submission; Name of District(s) and Field Office(s) Affected; Type of material Submitted (e.g. narrative, map, and photos). Evaluate any submitted citizen information regarding the validity of proposed boundaries of the unit(s), the existence of roads and other boundary features, the size of the unit(s), and the presence or absence of wilderness characteristics based on relevant information available in the office (prior BLM inventories, ID team knowledge, aerial photographs, field observations, maps, etc.)

Conduct field reviews as necessary to verify information and to ascertain current conditions. Reach conclusions on current conditions including boundaries, size of areas and presence or absence of wilderness characteristics. Fully explain the basis for each conclusion on form 2, including any critical differences between BLM and citizen information.

Document your findings regarding current conditions for each inventoried area. Describe how the present conditions are similar to, or have changed from, the conditions documented in the original wilderness inventory. Document your findings on Form 2 for each inventory area. Cite to or attach data considered, including photographs, maps, GIS layers, field trip notes, project files, *etc.*

Year: 2011 Unit Number/Name: OR-036-083 — Purser Ridge

**FORM 1 -- DOCUMENTATION OF BLM WILDERNESS INVENTORY
FINDINGS ON RECORD**

1. Is there existing BLM wilderness inventory information on all or part of this area?

Yes No (If yes, and if more than one unit is within the area, list the names of those units.):

A.) Inventory Source(s) -- (X) Denotes all applicable BLM Inventory files, printed maps, or published BLM Decision documents with information pertaining to this unit.

Wilderness Inventories

- 1978-1980 – BLM Wilderness Inventory Unit Partially of OR-03-09-26 T.R.; OR-03-09-27 Well; Partially of OR-03-09-25 Stearns.(unpublished BLM documents in Vale District case files)
- April 1979 – *Wilderness -- Proposed Initial Inventory – Roadless Areas and Islands Which Clearly Do Not have Wilderness Characteristics, Oregon and Washington*

Wilderness Decision Documents

- August 1979 – *Wilderness Review – Initial Inventory, Final Decision on Public Lands Obviously Lacking Wilderness Characteristics and Announcement of Public Lands to be Intensively Inventoried for Wilderness Characteristics, Oregon and Washington* (green document)
- October 1979 – *Wilderness Review – Intensive Inventory - Oregon, Proposed Decision on the Intensive Wilderness Inventory of Selected Areas* (grey document).
- March 1980 – *Wilderness Review – Intensive Inventory; Final Decisions on 30 Selected Units in Southeast Oregon and Proposed Decisions on Other Intensively Inventoried Units in Oregon and Washington* (orange document)
- November 1980 - *Wilderness Inventory – Oregon and Washington, Final Intensive Inventory Decisions* (brown document)
- November 1981 *Stateline Intensive Wilderness Inventory Final Decision, Oregon, Idaho, Nevada, Utah* (tan document).

B.) Inventory Unit Name(s)/Number(s)

BLM Partially of OR-03-09-26 T.R.; OR-03-09-27 Well;
Partially of OR-03-09-25 Stearns

C.) Map Name(s)/Number(s)

- Final Decision – Initial Wilderness Inventory Map, August 1979, Oregon
- Proposed Decision -- Intensive Wilderness Inventory of Selected Areas Map, October 1979, Oregon
- Intensive Wilderness Inventory Map, March 1980, Oregon
- Intensive Wilderness Inventory --Final Decisions Map, November 1980, Oregon.
- November, 1981 *Stateline Intensive Wilderness Inventory Final Decision, Oregon, Idaho, Nevada, Utah* (tan document).

D.) BLM District(s)/Field Office(s)

Vale District Office

Jordan Field Office

2. BLM Inventory Findings on Record

(Existing inventory information regarding wilderness characteristics (if more than one BLM inventory unit is associated with the area, list each unit and answer each question individually for each inventory unit):

Inventory Source: See above.

Unit# / Name	Size (historic acres)	Natural Condition? Y/N	Outstanding Solitude? Y/N	Outstanding Primitive & Unconfined Recreation? Y/N	Supplemental Values? Y/N
Partially of OR-03-09-25 Stearns	1,840	*	*	*	*
OR-03-09-26 T.R.	560	*	*	*	*
OR-03-09-27 Well	1,040	*	*	*	*
TOTAL	3,440				

*-These criteria were not addressed during the inventory of this unit.

H-6300-1-WILDERNESS INVENTORY MAINTENANCE IN BLM OREGON/WASHINGTON

APPENDIX B – INVENTORY AREA EVALUATION

Evaluation of Current Conditions:

1) Document and review the existing BLM wilderness inventory findings on file, if available, regarding the presence or absence of individual wilderness characteristics, using Form 1, below.

2) Consider relevant information regarding current conditions available in the office to identify and describe any changes to the existing information (use interdisciplinary (ID) team knowledge, aerial photographs, field observations, maps, etc.), and document your findings on Form 2, below.

When Citizen Information has been submitted regarding wilderness characteristics, document the submitted materials including: date of Submission; Name of District(s) and Field Office(s) Affected; Type of material Submitted (e.g. narrative, map, photo). Evaluate any submitted citizen information regarding the validity of proposed boundaries of the unit(s), the existence of roads and other boundary features, the size of the unit(s), and the presence or absence of wilderness characteristics based on relevant information available in the office (prior BLM inventories, ID team knowledge, aerial photographs, field observations, maps, etc.)

Conduct field reviews as necessary to verify information and to ascertain current conditions. Reach conclusions on current conditions including boundaries, size of areas and presence or absence of wilderness characteristics. Fully explain the basis for each conclusion on form 2, including any critical differences between BLM and citizen information.

Document your findings regarding current conditions for each inventoried area. Describe how the present conditions are similar to, or have changed from, the conditions documented in the original wilderness inventory. Document your findings on Form 2 for each inventory area. Cite to or attach data considered, including photographs, maps, GIS layers, field trip notes, project files, *etc.*

FORM 2 -- DOCUMENTATION OF CURRENT WILDERNESS INVENTORY CONDITIONS

Unit Number/Name – OR-036-083 — Purser Ridge

Description of Current Conditions: [Include land ownership, location, topography, vegetation features and summary of major human uses/activities.]

1. Is the unit of sufficient size?

Yes X No _____

Description: Refer to this unit's associated Map 1 for its location. In the late 1970's, Vale and Boise (ID) BLM Districts both conducted independent wilderness characteristics inventories which included public lands only within their respective states. With this WC inventory maintenance, the bounds of OR-036-083 unit includes contiguous roadless BLM public lands within both Vale, OR and Boise, ID Districts.

The bounds of this 6,389 acre OR-036-083 unit include 3,106 acres in Vale District and 3,273 acres in Boise District. The difference in BLM documented acreage by BLM districts between the late 1970's and presently is due to the increased accuracy of calculated acreage from BLM GIS information. The remaining 334 acre difference from Form 1 is the acreage contained within the utility corridor of U.S. Highway 95 and the mineral material site right-of-way that form the western boundary of the unit.

OR-036-083's boundary components within Vale District consists of the utility and right-of-way corridor for U.S. Highway 95, a mineral material site right-of-way, and a non-numbered BLM road on the west side, private land parcels on the north, and private land parcels and a road traversing public lands and a private land parcels on its south end. Within the Boise District the unit's boundary consists of private land parcels on the south, a road traversing public lands and a private land parcels on its east and northeast side and private land parcels on its west side. The BLM and county roads in Vale District receive mechanical maintenance as needed to ensure their ability to provide for relatively regular and continuous (seasonal) use. However, the unit's area within Vale District does not – of itself -- meet any size criteria of wilderness characteristics.

2. Is the unit in a natural condition?

Yes _____ No X N/A _____

Description: To date, Vale District has received no data from the Boise District about human imprints present within the unit in Idaho. Respectively, no determination for natural condition can be established in this document for that portion of the unit located in Boise District.

Given its size relative to the evidence of man-made developments, BLM Unit 036-083 appears to be affected not primarily by the forces of nature but with the imprint of humans that is substantially noticeable to the average visitor. Although the unit's area within Vale District (3,106 acres) does not meet any size criteria for wilderness characteristics, the following is provided regarding natural conditions within Vale District. Vegetation within the area is predominately a mix of non-native and native grasses and low and big sagebrush. The area within Vale District is characterized by low profile rolling terrain of shallow drainages flowing predominately north toward Cow Creek with the remaining southern drainages flowing southward toward Hooker Creek. The area's elevations within Vale District of the unit range from 4,460 to 5,133 feet.

Refer to this unit's associated Map 1 and Map 2 for human imprints in Vale District. There are 8.2 miles of rangeland fence, two fenced exclosures, 24.25 miles of 15 motorized primitive trails (MPTs), 3 developed springs and 4 troughs, 0.54 miles of one discontinued MPT, 5.9 miles of one buried water pipeline system with 10 trough sites and one water storage tank next to at a water well pump house, and one earthen reservoir. During 1962 approximately 95 percent of the Vale District's portion of the unit received a vegetation treatment that consisted of a prescribed burn. The area was then plowed and disked, and reseeded with non-native grass. This prescription left little of the native shrub land intact and reduced any possibility for vegetation to provide screening throughout the unit. The Vale District portion of the unit to the average visitor does not appear to be in a natural condition. In summary, due to the above described circumstances, BLM Unit OR-036-083 within Vale District appears to be affected primarily by the imprint of humans that is substantially noticeable to the average visitor.

3. Does the unit have outstanding opportunities for solitude?

Yes _____ No N/A _____

Description: To date, Vale District has received no data from the Boise District about opportunities for solitude within the unit in Idaho. Respectively, no determination on solitude can be established in this document for that portion of the unit located in Boise District.

BLM concludes that unit OR-036-060 does not provide outstanding opportunities for solitude. Although the unit's area within Vale District (3,106 acres) does not meet any size or natural condition criteria for wilderness characteristics, the following is provided regarding solitude within Vale District. The area's dimensions are approximately 3.0 miles in length and 2.0 wide. Topographic relief varies throughout the unit with elevations ranging from 4,460 to 5,133 feet above mean sea level. Elevation changes in most of the unit traversing from east to west or north to south are gradual with the highest elevations occurring along the Oregon/Idaho border and in two separate hill areas in the south central of the unit. The area's low profile vegetation is insufficient to provide adequate screening to support any outstanding opportunity for solitude. The unit lacks vegetative screening because of the non-native grass vegetation treatment that replaced native sagebrush communities approximately four decades ago in the 1960s. The broad

expanses of seeded grasslands coupled with isolated pockets of remaining native low and big sagebrush in the unit limit the ability for a visitor to find seclusion. In junction with the relatively small size of the unit, the unit is dissected by numerous MPTs, fence lines, and pipeline systems that lend the unit to not be conducive for providing opportunities for solitude. The sights and sounds emanating from traffic on U.S. Highway 95 detract from opportunities for solitude along entire western boundary of the unit. The present inventory determined that BLM Unit OR-036-083 does not have outstanding opportunities for solitude based on the proximity of U.S. Highway 95, the absence of vegetation screening, and the low profiled rolling terrain of the unit when combined with the narrow configuration of the area and its size within the Vale District.

4. Does the unit have outstanding opportunities for primitive and unconfined recreation?

Yes _____ No N/A _____

Description: To date, Vale District has received no data from the Boise District about opportunities for primitive and unconfined recreation within the unit in Idaho. Respectively, no determination on recreation can be established in this document for that portion of the unit located in Boise District.

BLM concludes that unit OR-036-060 does not provide outstanding opportunities for primitive and unconfined recreation. Although the unit's area within Vale District (3,106 acres) does not meet any size or natural condition criteria for wilderness characteristics, the following is provided regarding primitive and unconfined recreation within Vale District. The primary recreation activity within the area is hunting of common game species (deer, chukar, and some antelope) and associated day hiking. Horseback riding and general sightseeing, while available, are not actively pursued by most visitors. The area does not possess any unique, special or rare resource values which would more so draw recreating visitors to it. The unit's area within Vale District does not have outstanding opportunities for primitive and unconfined recreation.

5. Does the unit have supplemental values?

Yes _____ No N/A _____

Description:

Summary of Findings and Conclusion

Unit Name and Number: OR-036-083 — Purser Ridge (Within Vale District)

Summary Results of Analysis:

1. Does the area meet any of the size requirements? X* Yes No
 * -- within Vale and Boise Districts combined. However, the unit does not meet any size criteria independently within the Vale District portion of the unit.
2. Does the area appear to be natural? Yes X No
3. Does the area offer outstanding opportunities for solitude or a primitive and unconfined type of recreation? Yes X No NA
4. Does the area have supplemental values? Yes X No NA

Conclusion -- check one:

- The area or a portion of the area – within Vale District -- has Wilderness character.
- X The area – within Vale District -- does not have wilderness character.

Prepared by: Jack R Wenderoth 4-5-11
 Jack Wenderoth, Planning Contractor

Team Members:

<u> Aimee Huff </u>	<u> 4/5/2011 </u>
Aimee Huff, Rangeland Management Specialist	Date
<u> Eian Ray </u>	<u> 4-5-11 </u>
Eian Ray, GIS Specialist, Contractor	Date
<u> Garth R. Ross </u>	<u> 4/5/2011 </u>
Garth Ross, Wildlife Biologist	Date
<u> Brent Grasty </u>	<u> 4/5/11 </u>
Brent Grasty, GIS Coordinator	Date

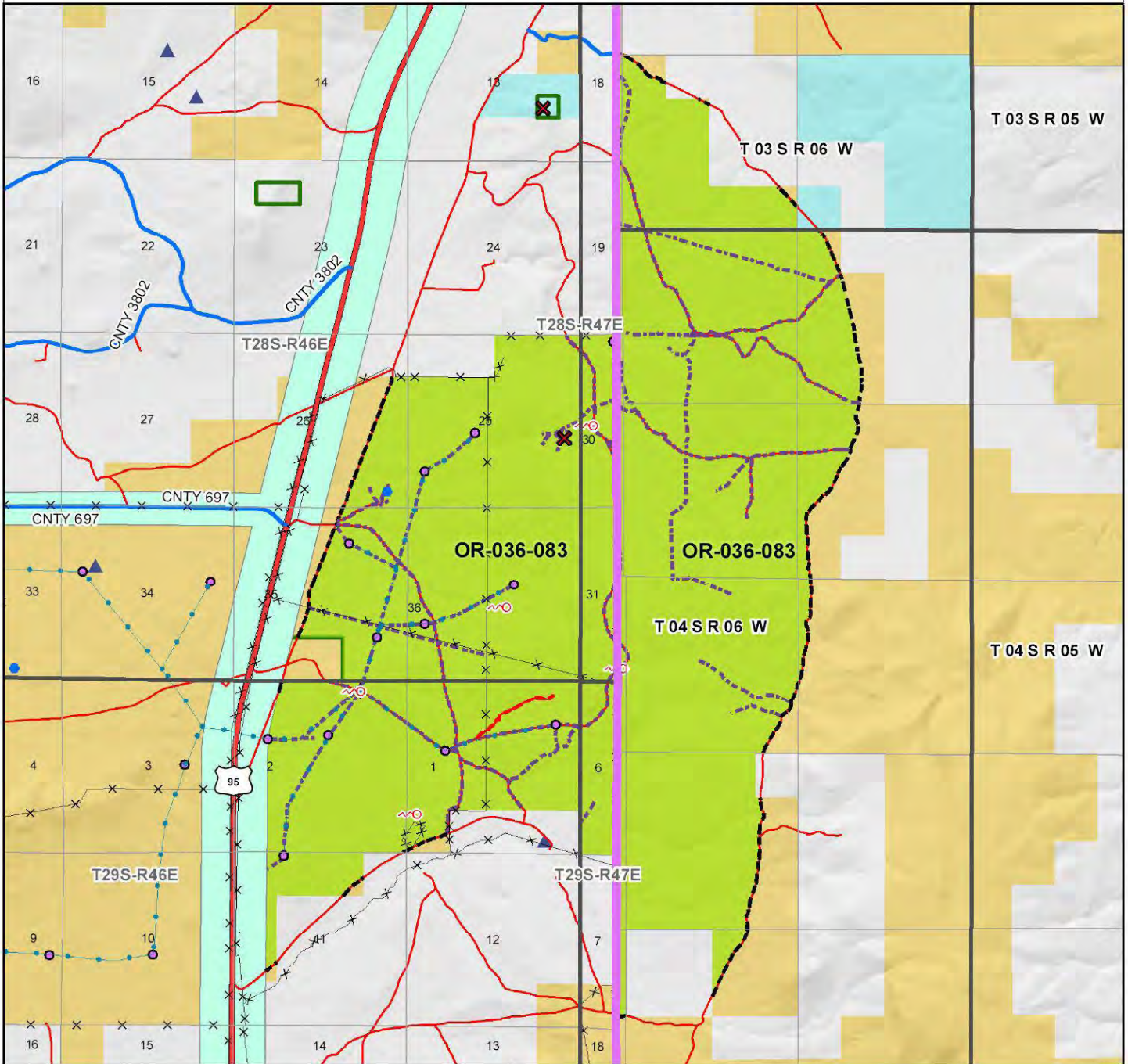
Approved by:

Carolyn R Freeborn 4/5/2011
 Carolyn Freeborn, Jordan Resource Area Field Manager Date

This form documents information that constitutes an inventory finding on wilderness characteristics. It does not represent a formal land use allocation or a final agency decision subject to administrative remedies under either 43 CFR parts 4 or 1610.5-2.

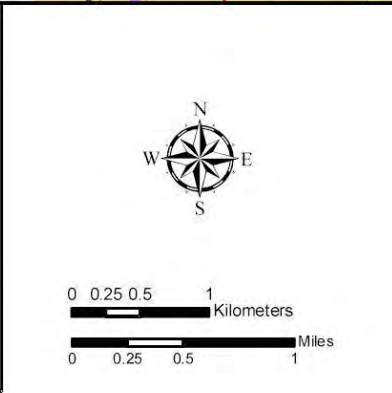
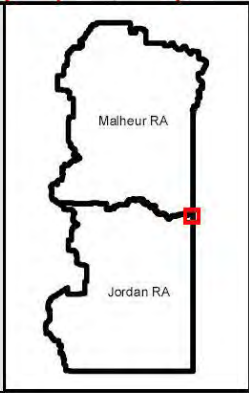
Wilderness Characteristics - Overview

Purser Ridge - OR-036-083 - Map 1 of 1



Legend

<ul style="list-style-type: none"> Developed Spring Wildlife Guzzler Earthen Reservoir Pipeline Trough Fence Storage Tank Surface Mining Disturbance Sage Grouse Lek Special Status Plant BLM Wild Char Inventory Unit Wilderness Study Area Mineral Material Site Road/Utility Right-of-Way Major Water Body 	<ul style="list-style-type: none"> Route Types - BLM Determination Boundary Road Motorized Primitive Trail (MPT) Discontinued Use Routes - Outside Wild Char Unit County Major Highway BLM Numbered & Other Routes Land Ownership Bureau of Land Management State Private Other Federal Land District Boundary District Boundary
---	--



U.S. DEPARTMENT OF THE INTERIOR
BUREAU OF LAND MANAGEMENT

VALE DISTRICT
March 17, 2011

No warranty is made by the Bureau of Land Management as to the accuracy, reliability, or completeness of these data for individual or aggregate use with other data. Original data were compiled from various sources. This information may not meet National Map Accuracy Standards. This product was developed through digital means and may be updated without notification.

--FINAL--