

Wilderness Inventory Unit Index of Documents
Pronghorn OR-036-041, 11 total pages

Page 1: Index Cover Sheet

[Page 2: Form 1 – Documentation of BLM Wilderness Inventory: Findings on Record](#)

[Page 5: Form 2 – Documentation of Current Wilderness Inventory Conditions](#)

[Page 9: Form 2 – Summary of Findings and Conclusion](#)

[Page 10: Wilderness Characteristics Overview–Pronghorn OR-036-041 Map 1 of 2](#)

[Page 11: Wilderness Characteristics-Land Treatments-Pronghorn OR-036-041 Map 2 of 2](#)

Prepared by:
U.S. Department of the Interior
Bureau of Land Management
Vale District Office
100 Oregon Street
Vale, Oregon 97918



H-6300-1-WILDERNESS INVENTORY MAINTENANCE IN BLM OREGON/WASHINGTON

APPENDIX B – INVENTORY AREA EVALUATION

Evaluation of Current Conditions:

- 1) Document and review the existing BLM wilderness inventory findings on file, if available, regarding the presence or absence of individual wilderness characteristics, using Form 1, below.
- 2) Consider relevant information regarding current conditions available in the office to identify and describe any changes to the existing information (use interdisciplinary (ID) team knowledge, aerial photographs, field observations, maps, etc.), and document your findings on Form 2, below.

When Citizen Information has been submitted regarding wilderness characteristics, document the submitted materials including: date of Submission; Name of District(s) and Field Office(s) Affected; Type of material Submitted (e.g. narrative, map, photo). Evaluate any submitted citizen information regarding the validity of proposed boundaries of the unit(s), the existence of roads and other boundary features, the size of the unit(s), and the presence or absence of wilderness characteristics based on relevant information available in the office (prior BLM inventories, ID team knowledge, aerial photographs, field observations, maps, etc.)

Conduct field reviews as necessary to verify information and to ascertain current conditions. Reach conclusions on current conditions including boundaries, size of areas and presence or absence of wilderness characteristics. Fully explain the basis for each conclusion on form 2, including any critical differences between BLM and citizen information.

Document your findings regarding current conditions for each inventoried area. Describe how the present conditions are similar to, or have changed from, the conditions documented in the original wilderness inventory. Document your findings on Form 2 for each inventory area. Cite to or attach data considered, including photographs, maps, GIS layers, field trip notes, project files, *etc.*

Year: 2010 **Unit Number/Name:** OR-036-041 -- Pronghorn
FORM 1 -- DOCUMENTATION OF BLM WILDERNESS INVENTORY
FINDINGS ON RECORD

1. Is there existing BLM wilderness inventory information on all or part of this area?

Yes No (If yes, and if more than one unit is within the area, list the names of those units.):

A.) Inventory Source(s) -- (X) Denotes all applicable BLM Inventory files, printed maps, or published BLM Decision documents with information pertaining to this unit.

Wilderness Inventories

- 1978 – BLM Wilderness Inventory Units 3-167 of OR-03-12-34 Pronghorn; 3-166 of OR-03-12-33 Eastside; OR-03-12-35 Bad Water; OR-03-12-36 Bell Mare; OR-03-12-37 Overshoe Pass (unpublished BLM documents stored in Vale District case files)
- April 1979 – *Wilderness -- Proposed Initial Inventory – Roadless Areas and Islands Which Clearly Do Not have Wilderness Characteristics, Oregon and Washington*

Wilderness Decision Documents

- August 1979 – *Wilderness Review – Initial Inventory, Final Decision on Public Lands Obviously Lacking Wilderness Characteristics and Announcement of Public Lands to be Intensively Inventoried for Wilderness Characteristics, Oregon and Washington* (green document)
- October 1979 – *Wilderness Review – Intensive Inventory - Oregon, Proposed Decision on the Intensive Wilderness Inventory of Selected Areas* (grey document).
- March 1980 – *Wilderness Review – Intensive Inventory; Final Decisions on 30 Selected Units in Southeast Oregon and Proposed Decisions on Other Intensively Inventoried Units in Oregon and Washington* (orange document)
- November 1980 - *Wilderness Inventory – Oregon and Washington, Final Intensive Inventory Decisions* (brown document)
- November 1981 *Stateline Intensive Wilderness Inventory Final Decision, Oregon, Idaho, Nevada, Utah* (tan document).

B.) Inventory Unit Name(s)/Number(s)

BLM 3-167 of OR-03-12-34 Pronghorn; 3-166 of OR-03-12-33 Eastside; OR-03-12-35 Bad Water; OR-03-12-36 Bell Mare; OR-03-12-37 Overshoe Pass

C.) Map Name(s)/Number(s)

- Final Decision – Initial Wilderness Inventory Map, August 1979, Oregon
- Proposed Decision -- Intensive Wilderness Inventory of Selected Areas Map, October 1979, Oregon
- Intensive Wilderness Inventory Map, March 1980, Oregon
- Intensive Wilderness Inventory --Final Decisions Map, November 1980, Oregon.
- November, 1981 *Stateline Intensive Wilderness Inventory Final Decision, Oregon, Idaho, Nevada, Utah* (tan document).

D.) BLM District(s)/Field Office(s)

Vale District Office

Jordan Field Office

2. BLM Inventory Findings on Record

(Existing inventory information regarding wilderness characteristics (if more than one BLM inventory unit is associated with the area, list each unit and answer each question individually for each inventory unit):

Inventory Source: See above.

Unit# / Name	Size (historic acres)	Natural Condition? Y/N	Outstanding Solitude? Y/N	Outstanding Primitive & Unconfined Recreation? Y/N	Supplemental Values? Y/N
3-166 of OR-03-12-33 Eastside	6,780	N	*	*	*
3-167 of OR-03-12-34 Pronghorn	14,120	N	*	*	*
OR-03-12-35 Bad Water	680	*	*	*	*
OR--03-12-36 Bell Mare	820	*	*	*	*
OR-03-12-37 Overshoe Pass	2,820	*	*	*	*
TOTAL	25,220				

* Criteria were not addressed during the inventory of this unit.

H-6300-1-WILDERNESS INVENTORY MAINTENANCE IN BLM OREGON/WASHINGTON

APPENDIX B – INVENTORY AREA EVALUATION

Evaluation of Current Conditions:

- 1) Document and review the existing BLM wilderness inventory findings on file, if available, regarding the presence or absence of individual wilderness characteristics, using Form 1, below.
- 2) Consider relevant information regarding current conditions available in the office to identify and describe any changes to the existing information (use interdisciplinary (ID) team knowledge, aerial photographs, field observations, maps, etc.), and document your findings on Form 2, below.

When Citizen Information has been submitted regarding wilderness characteristics, document the submitted materials including: date of Submission; Name of District(s) and Field Office(s) Affected; Type of material Submitted (e.g. narrative, map, and photos). Evaluate any submitted citizen information regarding the validity of proposed boundaries of the unit(s), the existence of roads and other boundary features, the size of the unit(s), and the presence or absence of wilderness characteristics based on relevant information available in the office (prior BLM inventories, ID team knowledge, aerial photographs, field observations, maps, etc.)

Conduct field reviews as necessary to verify information and to ascertain current conditions. Reach conclusions on current conditions including boundaries, size of areas and presence or absence of wilderness characteristics. Fully explain the basis for each conclusion on form 2, including any critical differences between BLM and citizen information.

Document your findings regarding current conditions for each inventoried area. Describe how the present conditions are similar to, or have changed from, the conditions documented in the original wilderness inventory. Document your findings on Form 2 for each inventory area. Cite to or attach data considered, including photographs, maps, GIS layers, field trip notes, project files, *etc.*

FORM 2 -- DOCUMENTATION OF CURRENT WILDERNESS INVENTORY CONDITIONS

Unit Number/Name: OR-036-041 -- Pronghorn

Description of Current Conditions: [Include land ownership, location, topography, vegetation features and summary of major human uses/activities.]

1. Is the unit of sufficient size?

Yes No

Description: Refer to this inventory unit's associated Map 1 for its location. The 25,419 acre unit was included as part of the original BLM units OR-03-12-33, OR-03-12-34, OR-03-12-35, OR-03-12-36, and OR-03-12-37 of the latter 1970's meeting the size criteria. Acreage for unit OR-036-041 in Form 2 is calculated from BLM GIS information. The remaining 199 acre difference from Form 1 was either not calculated properly or resulted from a rounding error from methods and maps used in the initial 1978 inventory. The unit boundary consists of a utility corridor right-of-way and portions of four mineral material sites rights-of-way on its west side, BLM road 6361-0-00 on its north side that includes a portion of a mineral material site right-of-way, BLM road 6362-0-00 on its east side, and BLM road 6364-0-00 that is straddled by two non-numbered road segments and a portion of one mineral material site right-of-way on its south side. The eastern road segment lies between BLM roads 6362-0-00 and 6364-0-00 and the western segment lies between BLM road 6364-0-00 and the utility corridor along the western boundary. The boundary roads receive mechanical maintenance as needed to keep them passable on a regular and continuous (seasonal) basis.

2. Is the unit in a natural condition?

Yes No N/A

Description: The western edge of this unit includes a rough, sharply eroded ridgeline. The ridge rises nearly 900 feet in about a mile. Elevations range from 4,425 to 5,496 feet. The ridgeline slopes sharply to the west and gently slopes to the east as is common with fault scarp ridges throughout the basin and range geographic province.

Refer to this inventory unit's associated Map 1 and Map 2 for human developments in this unit. Human imprints within the unit include 28.3 miles of 15 motorized primitive trails, 13.7 miles of fenceline, 8 earthen reservoirs, one corral, one developed spring, 13.1 miles of three pipeline systems with 18 troughs and one storage tank, one study enclosure, and 14 vegetative manipulation treatments (implemented 1965-2006).

Vegetation treatments numbers include both the vegetation alteration treatment and the reseeding operation to rehabilitate the vegetation alteration. There is remnant visual evidence of three large vegetation treatments and reseedings that contain linear contrast

differences in vegetation types within the unit. Presently, to the average visitor, the remaining vegetation treatments affecting the unit that have occurred between 1965 and 2006 appear – individually and collectively – indistinguishable. Also within the unit there is remnant visual evidence of 7.2 miles of 6 discontinued vehicular routes.

Although the presence of the ridgeline along Highway 95 provides some visual screening, the distribution of, distances between, and the types of human developments present within the unit relative to the unit's size, when considered individually and collectively, result in the unit appearing to be affected primarily by the imprint of humans and are substantially noticeable to the average visitor. BLM arrives at the same conclusion as did the 1970's inventory that unit OR-036-041 does not appear natural to the average visitor.

3. Does the unit have outstanding opportunities for solitude?

Yes _____ No N/A _____

Description: The unit is approximately 8 miles long and ranges in width from 3 to 6 miles in width between its north and south end. The topography is relatively flat to rolling overall with the exception of the ridgeline on the western edge of the unit. The types, density, and distribution of vegetation types do not provide sufficient screening between visitors to contribute to outstanding opportunities for solitude. The sights and sounds emanating from traffic on U.S. Highway 95 detract from opportunities for solitude along much of the western edge of unit. The unit's combination of limited topographic features and lack of vegetative screening do not substantially enhance a visitor's ability to experience solitude. In spite of the unit's increased size and its present configuration that forms a larger block of public land by incorporating four smaller individual units from the 1970's inventory the unit does not allow for outstanding opportunities of solitude. BLM concludes that unit OR-036-041 does not provide outstanding opportunities for solitude.

4. Does the unit have outstanding opportunities for primitive and unconfined recreation?

Yes _____ No N/A _____

Description: The unit provides opportunities for hunting, sightseeing, horseback riding, hiking, backpacking, camping, bird watching and photography. However, opportunities for these activities are not outstanding because of the unit lacks scenic quality, diversity of landforms, and challenging terrain. The lack of scenic quality, diversity in landforms, attractive features, and activities render the opportunities for primitive and unconfined recreation less than outstanding. Although hunting opportunities have been identified as a recreational value within this unit, they are not considered to be outstanding by the inventory team. Despite the units size BLM concludes that unit OR-036-041 does not possess outstanding opportunities for primitive and unconfined recreation.

5. Does the unit have supplemental values?Yes X No N/A

Description: The BLM's 1970s inventory indicated that surrounding acreage near Unit 3-118 (adjacent to and including the northern portion of unit OR-036-041) is one of the few areas where black sagebrush and sand dropseed grass occur in southeastern Oregon, and it is the most northerly distribution of these species. The northern portion of unit OR-036-041 contains a large area of the black sagebrush plant community. These vegetation types are dependent upon unusual combinations of soils and exposure, and are of interest to soil scientist, botanists, and ecologist.

The 1970s inventory also indicated that Unit 3-118 and surrounding acreage (adjacent to and including the northern portion of unit OR-036-041) is within the range of the kit fox, which is on the Oregon Department of Fish and Wildlife's (ODFW) list of threatened species. This areas vegetation is partially a salt desert shrub type, a dryer zone than sagebrush, which kit fox inhabit.

The unit contains two Research Natural Areas (RNAs) that are identified as the Mendi Gore Playa. These are located along BLM road 6361-0-00 at the extreme north-central boundary of the unit. The two RNAs contain either a winterfat plant community or a black sagebrush plant community.

Summary of Findings and Conclusion

Unit Name and Number: **OR-036-041 -- Pronghorn**

Summary Results of Analysis:

1. Does the area meet any of the size requirements? Yes No
2. Does the area appear to be natural? Yes No
3. Does the area offer outstanding opportunities for solitude or a primitive and unconfined type of recreation? Yes No NA
4. Does the area have supplemental values? Yes No NA

Conclusion -- check one:

The area, or a portion of the area, has wilderness character.

The area does not have wilderness character.

Prepared by: Jack Wenderoth 3/3/10
Jack Wenderoth, Planning Contractor

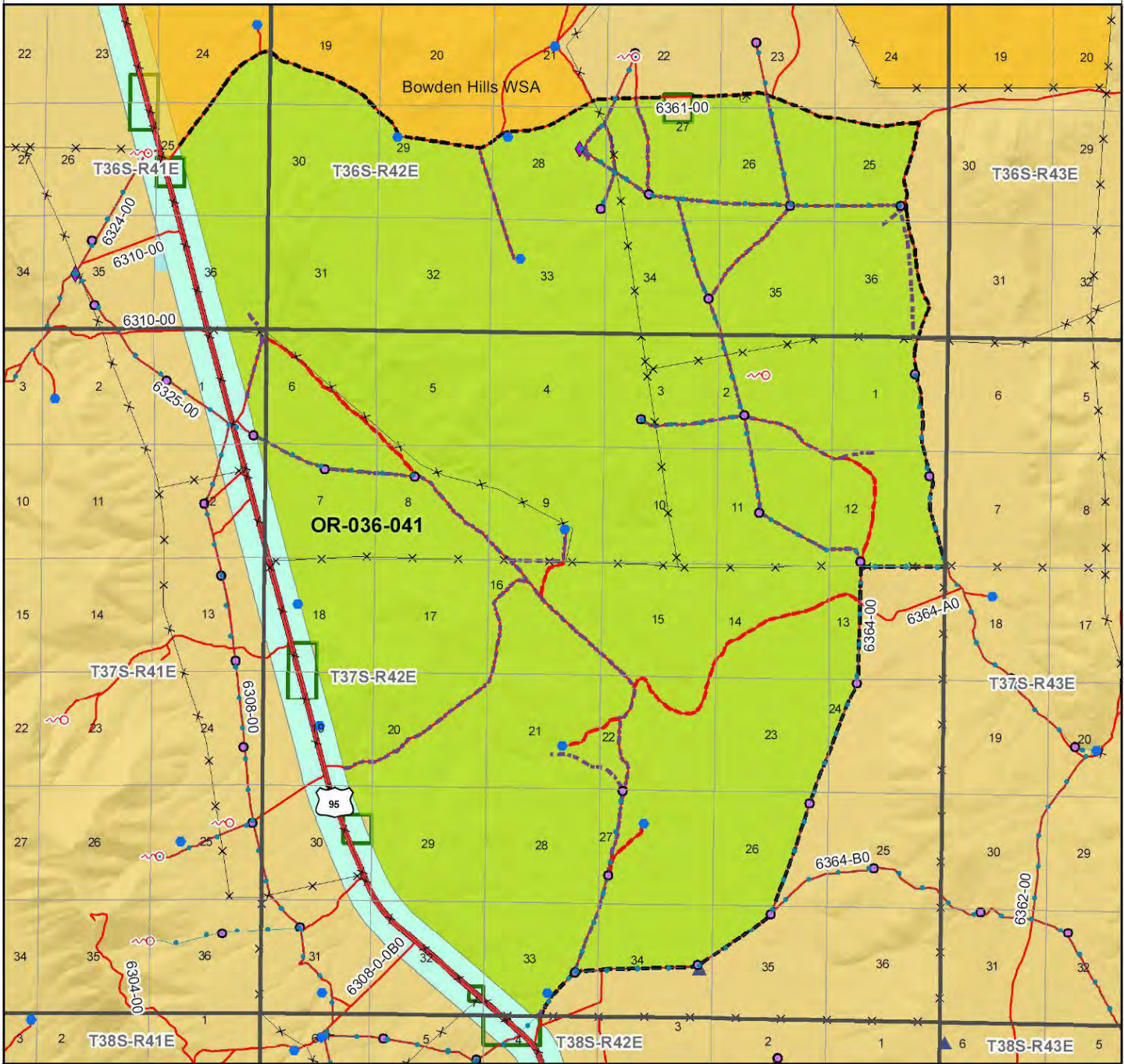
Team Members:

<u>Richard White</u> Richard White, Rangeland Management Specialist	<u>3/19/2010</u> Date
<u>Dave Draheim</u> Dave Draheim, Outdoor Recreation Planner	<u>2/10/10</u> Date
<u>Garth Ross</u> Garth Ross, Wildlife Biologist	<u>3/23/2010</u> Date
<u>Jon Sadowski</u> Jon Sadowski, Environmental Contractor	<u>3-4-2010</u> Date
<u>Eian Ray</u> Eian Ray, GIS Specialist, Contractor	<u>03/03/10</u> Date
<u>Brent Grasty</u> Brent Grasty, GIS Coordinator	<u>3/19/10</u> Date

Approved by: Carolyn R. Freeborn 4/6/10
 Carolyn Freeborn, Jordan Resource Area Field Manager Date

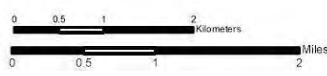
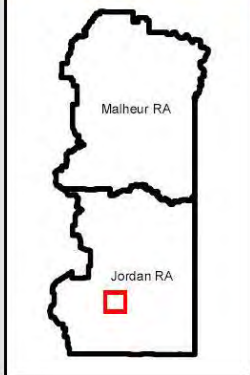
This form documents information that constitutes an inventory finding on wilderness characteristics. It does not represent a formal land use allocation or a final agency decision subject to administrative remedies under either 43 CFR parts 4 or 1610.5-2.

Wilderness Characteristics - Overview Pronghorn - OR-036-041 - Map 1 of 2



Legend

- | | |
|---|--|
| <ul style="list-style-type: none"> Developed Spring Wildlife Guzzler Earthen Reservoir Pipeline Trough Fence Storage Tank Surface Mining Disturbance Sage Grouse Lek Special Status Plant BLM Wild Char Inventory Unit Wilderness Study Area Mineral Material Site Road/Utility Right-of-Way Major Water Body | <ul style="list-style-type: none"> Route Types - BLM Determination Boundary Road Motorized Primitive Trail (MPT) Discontinued Use Routes - Outside Wild Char Unit County Major Highway BLM Numbered & Other Routes Land Ownership Bureau of Land Management State Private Other Federal Land |
|---|--|



U.S. DEPARTMENT OF THE INTERIOR
BUREAU OF LAND MANAGEMENT

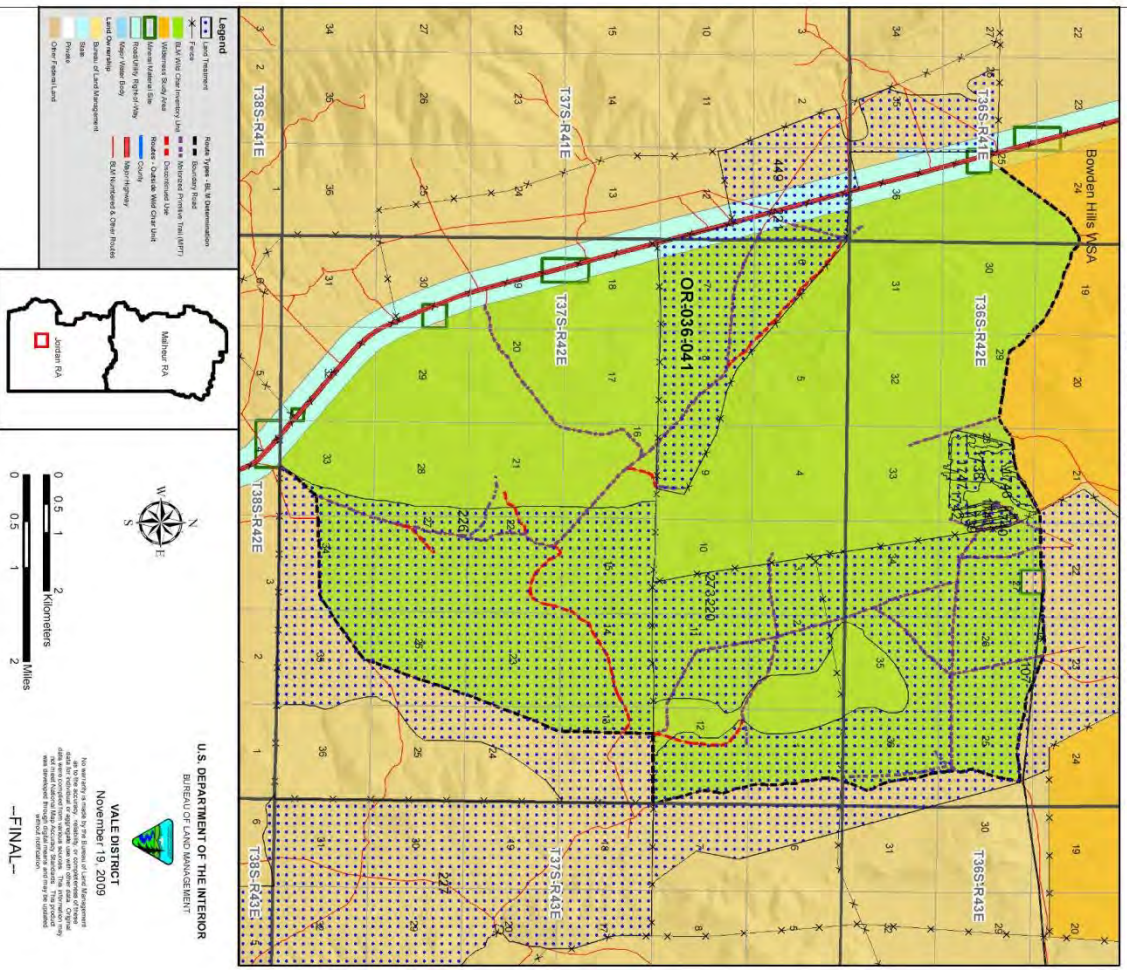


VALE DISTRICT
November 19, 2009

No warranty is made by the Bureau of Land Management as to the accuracy, reliability, or completeness of these data for individual or aggregate use with other data. Original data were compiled from various sources. This information may not meet National Map Accuracy Standards. This product was developed through digital means and may be updated without notification.

--FINAL--

Wilderness Characteristics - Land Treatments
Pronghorn - OR-036-041 - Map 2 of 2



Wilderness Characteristics - Land Treatments
Pronghorn - OR-036-041 - Map 2 of 2

OBJECTID *	NAME	TREATMENT TYPE	SEED GROUP	DATE
107	ROMIE WUI	Plow/Disc	Not Applicable	2006/07/01
220	OVERSHOE SDG	Chemical Treatment	Non-native Grasses	1966
221	BASQUE SDG	Chemical Treatment	Not Applicable	1969
226	CASCADE B.C.	Chemical Treatment	Not Applicable	1967
227	JACKSON CR B.C.	Chemical Treatment	Not Applicable	1970
273	OVERSHOE SDG	Drill Seeding	Non-native Grasses	1966
449	BASQUE SDG	Drill Seeding	Non-native Grasses	1969
1738	OVERSHOE	Aerial Seeding	Unknown	2003/01/01
1739	OVERSHOE	Aerial Seeding	Unknown	2003/01/01
1740	OVERSHOE	Aerial Seeding	Unknown	2003/01/01
1741	OVERSHOE	Aerial Seeding	Unknown	2003/01/01
1742	OVERSHOE	Aerial Seeding	Unknown	2003/01/01
1746	OVERSHOE SEEDING	Drill Seeding	Native Grasses	2002/12/02
1747	OVERSHOE SEEDING	Drill Seeding	Native Grasses	2002/12/02

Note: The Land Treatments represented by navy blue dots on the map to the left are labeled with the treatments' ObjectIDs listed in the first field of the Land Treatments table shown above. Multiple types of treatments may have been applied to the same area. For example, one treatment area may have been plowed and drill seeded - a record is shown in the table for each type of treatment.

Legend

- Land Features:
 - Private
 - Public
 - Boundary
 - Section
 - Quarter
 - Block
 - County
 - State
 - City
 - Water
 - Wetland
 - Shrubland
 - Grassland
 - Forest
 - Open Space
 - Other
- Boundaries:
 - Section
 - Quarter
 - Block
 - County
 - State
 - City
- Other:
 - Water
 - Wetland
 - Shrubland
 - Grassland
 - Forest
 - Open Space
 - Other

U.S. DEPARTMENT OF THE INTERIOR
BUREAU OF LAND MANAGEMENT

VALE DISTRICT
 November 19, 2009

0 0.5 1 2 Kilometers
 0 0.5 1 2 Miles

—FINAL—