

Wilderness Inventory Unit Index of Documents  
**Poison Creek OR-034-082, 9 total pages**

Page 1: Index Cover Sheet

[Page 2: Form 1 – Documentation of BLM Wilderness Inventory: Findings on Record](#)

[Page 5: Form 2 – Documentation of Current Wilderness Inventory Conditions](#)

[Page 8: Form 2 – Summary of Findings and Conclusion](#)

[Page 9: Wilderness Characteristics Overview – Poison Creek OR-034-082 Map 1 of 1](#)

**Prepared by:**  
**U.S. Department of the Interior**  
**Bureau of Land Management**  
**Vale District Office**  
**100 Oregon Street**  
**Vale, Oregon 97918**



## **H-6300-1-WILDERNESS INVENTORY MAINTENANCE IN BLM OREGON/WASHINGTON**

### **APPENDIX B – INVENTORY AREA EVALUATION**

#### **Evaluation of Current Conditions:**

- 1) Document and review the existing BLM wilderness inventory findings on file, if available, regarding the presence or absence of individual wilderness characteristics, using Form 1, below.
- 2) Consider relevant information regarding current conditions available in the office to identify and describe any changes to the existing information (use interdisciplinary (ID) team knowledge, aerial photographs, field observations, maps, etc.), and document your findings on Form 2, below.

When Citizen Information has been submitted regarding wilderness characteristics, document the submitted materials including: date of Submission; Name of District(s) and Field Office(s) Affected; Type of material Submitted (e.g. narrative, map, photo). Evaluate any submitted citizen information regarding the validity of proposed boundaries of the unit(s), the existence of roads and other boundary features, the size of the unit(s), and the presence or absence of wilderness characteristics based on relevant information available in the office (prior BLM inventories, ID team knowledge, aerial photographs, field observations, maps, etc.)

Conduct field reviews as necessary to verify information and to ascertain current conditions. Reach conclusions on current conditions including boundaries, size of areas and presence or absence of wilderness characteristics. Fully explain the basis for each conclusion on form 2, including any critical differences between BLM and citizen information.

Document your findings regarding current conditions for each inventoried area. Describe how the present conditions are similar to, or have changed from, the conditions documented in the original wilderness inventory. Document your findings on Form 2 for each inventory area. Cite to or attach data considered, including photographs, maps, GIS layers, field trip notes, project files, *etc.*

Year: 2010 Unit Number/Name: OR-034-082 — Poison Creek

**FORM 1 -- DOCUMENTATION OF BLM WILDERNESS INVENTORY  
FINDINGS ON RECORD**

**1. Is there existing BLM wilderness inventory information on all or part of this area?**

Yes X No \_\_\_\_\_ (If yes, and if more than one unit is within the area, list the names of those units.):

**A.) Inventory Source(s) -- (X)** Denotes all applicable BLM Inventory files, printed maps, or published BLM Decision documents with information pertaining to this unit.

**Wilderness Inventories**

- (X) 1978-1980 – BLM Wilderness Inventory Unit 3-03 of OR-03-01-25 Poison Creek (unpublished BLM documents in case files)
- (X) April 1979 – *Wilderness -- Proposed Initial Inventory – Roadless Areas and Islands Which Clearly Do Not have Wilderness Characteristics, Oregon and Washington*

**Wilderness Decision Documents**

- (X) August 1979 – *Wilderness Review – Initial Inventory, Final Decision on Public Lands Obviously Lacking Wilderness Characteristics and Announcement of Public Lands to be Intensively Inventoried for Wilderness Characteristics, Oregon and Washington* (green document)
- ( ) October 1979 – *Wilderness Review – Intensive Inventory - Oregon, Proposed Decision on the Intensive Wilderness Inventory of Selected Areas* (grey document)
- ( ) March 1980 – *Wilderness Review – Intensive Inventory; Final Decisions on 30 Selected Units in Southeast Oregon and Proposed Decisions on Other Intensively Inventoried Units in Oregon and Washington* (orange document)
- ( ) November 1980 - *Wilderness Inventory – Oregon and Washington, Final Intensive Inventory Decisions* (brown document)
- ( ) November 1981 *Stateline Intensive Wilderness Inventory Final Decision, Oregon, Idaho, Nevada, Utah* (tan document)

**B.) Inventory Unit Name(s)/Number(s)**

3-03 of BLM OR-03-01-25 Poison Creek

**C.) Map Name(s)/Number(s)**

- (X) Final Decision – Initial Wilderness Inventory Map, August 1979, Oregon
- ( ) Proposed Decision -- Intensive Wilderness Inventory of Selected Areas Map, October 1979, Oregon
- ( ) Intensive Wilderness Inventory Map, March 1980, Oregon
- ( ) Intensive Wilderness Inventory --Final Decisions Map, November 1980, Oregon
- ( ) November, 1981 *Stateline Intensive Wilderness Inventory Final Decision, Oregon, Idaho, Nevada, Utah* (tan document)

**D.) BLM District(s)/Field Office(s)**

Vale District/Malheur Resource Area

**2. BLM Inventory Findings on Record**

(Existing inventory information regarding wilderness characteristics (if more than one BLM inventory unit is associated with the area, list each unit and answer each question individually for each inventory unit):

**Inventory Source:** See above.

<b>Unit#/ Name</b>	<b>Size (historic acres)</b>	<b>Natural Condition? Y/N</b>	<b>Outstanding Solitude? Y/N</b>	<b>Outstanding Primitive &amp; Unconfined Recreation? Y/N</b>	<b>Supplemental Values? Y/N</b>
3-03 of OR- 03-01-25 Poison Creek	5,660	N	*	*	*
<b>TOTAL</b>	5,660				

\* -- These criteria were not addressed during the inventory of this unit since the unit did not meet the natural condition criteria.

## **H-6300-1-WILDERNESS INVENTORY MAINTENANCE IN BLM OREGON/WASHINGTON**

### **APPENDIX B – INVENTORY AREA EVALUATION**

#### **Evaluation of Current Conditions:**

- 1) Document and review the existing BLM wilderness inventory findings on file, if available, regarding the presence or absence of individual wilderness characteristics, using Form 1, below.
- 2) Consider relevant information regarding current conditions available in the office to identify and describe any changes to the existing information (use interdisciplinary (ID) team knowledge, aerial photographs, field observations, maps, etc.), and document your findings on Form 2, below.

When Citizen Information has been submitted regarding wilderness characteristics, document the submitted materials including: date of Submission; Name of District(s) and Field Office(s) Affected; Type of material Submitted (e.g. narrative, map, photo). Evaluate any submitted citizen information regarding the validity of proposed boundaries of the unit(s), the existence of roads and other boundary features, the size of the unit(s), and the presence or absence of wilderness characteristics based on relevant information available in the office (prior BLM inventories, ID team knowledge, aerial photographs, field observations, maps, etc.)

Conduct field reviews as necessary to verify information and to ascertain current conditions. Reach conclusions on current conditions including boundaries, size of areas and presence or absence of wilderness characteristics. Fully explain the basis for each conclusion on form 2, including any critical differences between BLM and citizen information.

Document your findings regarding current conditions for each inventoried area. Describe how the present conditions are similar to, or have changed from, the conditions documented in the original wilderness inventory. Document your findings on Form 2 for each inventory area. Cite to or attach data considered, including photographs, maps, GIS layers, field trip notes, project files, *etc.*

## **FORM 2 -- DOCUMENTATION OF CURRENT WILDERNESS INVENTORY CONDITIONS**

**Unit Number/Name:** OR-034-082 — Poison Creek

**Description of Current Conditions:** [Include land ownership, location, topography, vegetation features and summary of major human uses/activities.]

### **1. Is the unit of sufficient size?**

Yes   X              No           

**Description:** Refer to this inventory unit's associated Map 1 for its location. The unit has 5,601 acres of public land. The unit has nearly the same bounds as BLM's late 1970's inventory unit. In the late 1970's BLM identified a section line as a boundary of the 3-03 unit's southwest sector. Since a section line is not a qualifying boundary feature, some additional adjacent public lands have been included in this current OR-034-082 inventory unit. Also, improved methods since the late 1970's to determine accurate measurements are a factor for the variance of the unit's size.

The unit's boundaries are BLM road 7362-00 on its south side, private lands on its west and north sides, and private land and unnamed road traversing public land on its east side. A 40 acre private inholding is also a feature of the unit's boundary. The boundary roads are mechanically maintained as needed to provide for relatively regular and continuous use.

### **2. Is the unit in a natural condition?**

Yes   X              No                       N/A           

**Description:** Most of the unit is composed of varied drainages flowing generally to the northeast; steeper slopes are associated mostly with the unit's approximate west half. Poison Creek, its upper tributaries and other channels drain generally northeast through the approximate eastern two-thirds width (east-west) of the unit. Further east, sloping terrain draining generally to the northeast becomes of lower gradient and profile between shallower drainages which approach closer to the unit's east and northeast boundary features. Elevations range from 3,100 to 5,520 feet. Vegetation is predominately sagebrush and native grasses.

Refer to this unit's associated Map 1 for human imprints. There are 5.4 miles of 9 motorized primitive trails (MPTs), 7.9 miles of rangeland fences, 3 earthen reservoirs with one enclosed by rangeland fence. These are basically the same developments as documented in the late 1970's with the exception that the original inventory identified one of the routes which traverses basically through the unit's middle (totaling about 1.5 miles) as a road. Presently, the route has changed status to an MPT due to no mechanical maintenance performed and BLM's present intent to not mechanically maintain the route

in the future. Unlike in the late 1970's, the present BLM interdisciplinary team concludes that due to combination of the types, extent, and spatial distribution between the human developments –relative to the unit's size -- the area appears to be affected primarily by the forces of nature with the imprint of humans substantially unnoticeable to the average visitor.

**3. Does the unit have outstanding opportunities for solitude?**

Yes \_\_\_\_\_ No   X   N/A \_\_\_\_\_

**Description:** The unit has insufficient vegetative cover for screening between visitors to provide for outstanding opportunities for solitude. The unit's configuration is such that its northeast and southeast sectors are restricted to very narrow extensions not exceeding about 0.6 miles in width. Its boundaries are such that the unit is between about 2 and 3.5 miles maximum in one direction and about 1.25 to 2.75 miles maximum in the other. This configuration results in a relatively small central core area within the unit, and with it partially affected by the 40 acre inholding. While a visitor can experience a sense of being isolated – mostly as associated with the small central core area of the unit -- the unit's configuration and boundary features combined with its topographic properties and lack of vegetative screening results in settings insufficient to provide outstanding opportunities for solitude.

**4. Does the unit have outstanding opportunities for primitive and unconfined recreation?**

Yes \_\_\_\_\_ No   X   N/A \_\_\_\_\_

**Description:** The primary recreation is hunting of common game species (primarily deer and chukar) and associated hiking. The unit possesses no special or unique features which would draw visitors to it. Individually or in combinations, the activities do not provide outstanding opportunities for primitive and unconfined recreation.

**5. Does the unit have supplemental values?**

Yes \_\_\_\_\_ No   X   N/A \_\_\_\_\_

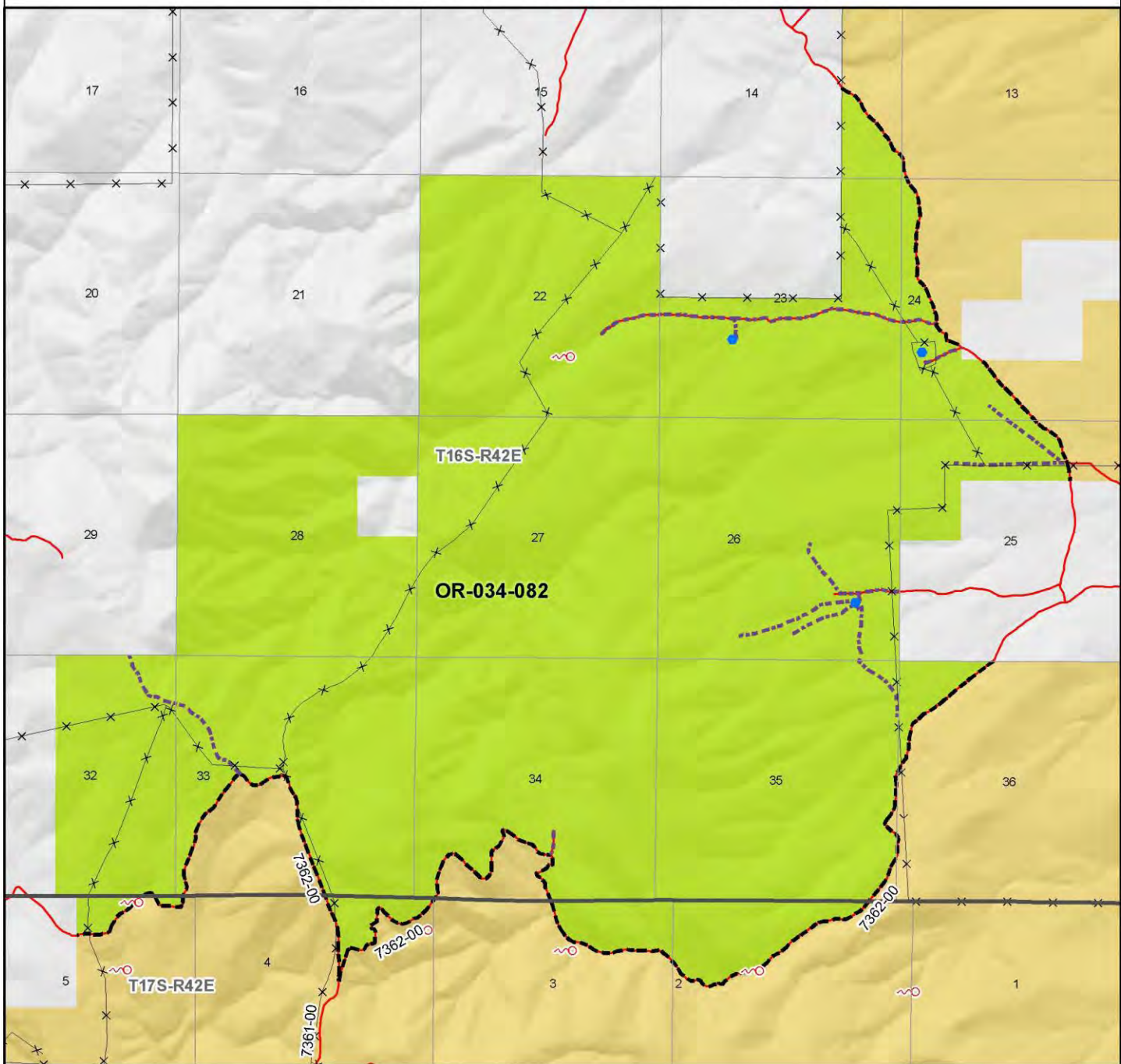
**Description:** None known.



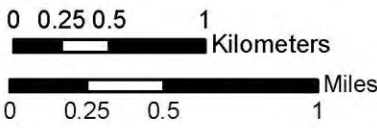
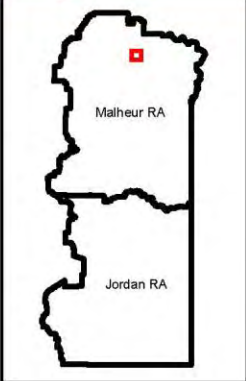


# Wilderness Characteristics - Overview

## Poison Creek - OR-034-082 - Map 1 of 1



Legend	
	Developed Spring
	Wildlife Guzzler
	Earthen Reservoir
	Pipeline
	Trough
	Fence
	Storage Tank
	Surface Mining Disturbance
	Sage Grouse Lek
	Special Status Plant
	BLM Wild Char Inventory Unit
	Wilderness Study Area
	Mineral Material Site
	Road/Utility Right-of-Way
	Major Water Body
	<b>Route Types - BLM Determination</b> Boundary Road
	Motorized Primitive Trail (MPT)
	Discontinued Use
	<b>Routes - Outside Wild Char Unit</b> County
	Major Highway
	BLM Numbered & Other Routes
	<b>Land Ownership</b> Bureau of Land Management
	State
	Private
	Other Federal Land



**U.S. DEPARTMENT OF THE INTERIOR**  
BUREAU OF LAND MANAGEMENT



**VALE DISTRICT**  
June 8, 2010

No warranty is made by the Bureau of Land Management as to the accuracy, reliability, or completeness of these data for individual or aggregate use with other data. Original data were compiled from various sources. This information may not meet National Map Accuracy Standards. This product was developed through digital means and may be updated without notification.

--FINAL--