

Wilderness Inventory Unit Index of Documents
Pine Tree Ridge OR-034-101, 10 total pages

Page 1: Index Cover Sheet

[Page 2: Form 1 – Documentation of BLM Wilderness Inventory: Findings on Record](#)

[Page 5: Form 2 – Documentation of Current Wilderness Inventory Conditions](#)

[Page 8: Form 2 – Summary of Findings and Conclusion](#)

[Page 9: Wilderness Characteristics Overview – Pine Tree Ridge OR-034-101 Map 1 of 2](#)

[Page 10: Wilderness Characteristics-Land Treatments-Pine Tree Ridge OR-034-101 Map 2 of 2](#)

Prepared by:
U.S. Department of the Interior
Bureau of Land Management
Vale District Office
100 Oregon Street
Vale, Oregon 97918



H-6300-1-WILDERNESS INVENTORY MAINTENANCE IN BLM OREGON/WASHINGTON

APPENDIX B – INVENTORY AREA EVALUATION

Evaluation of Current Conditions:

- 1) Document and review the existing BLM wilderness inventory findings on file, if available, regarding the presence or absence of individual wilderness characteristics, using Form 1, below.
- 2) Consider relevant information regarding current conditions available in the office to identify and describe any changes to the existing information (use interdisciplinary (ID) team knowledge, aerial photographs, field observations, maps, etc.), and document your findings on Form 2, below.

When Citizen Information has been submitted regarding wilderness characteristics, document the submitted materials including: date of Submission; Name of District(s) and Field Office(s) Affected; Type of material Submitted (e.g. narrative, map, photo). Evaluate any submitted citizen information regarding the validity of proposed boundaries of the unit(s), the existence of roads and other boundary features, the size of the unit(s), and the presence or absence of wilderness characteristics based on relevant information available in the office (prior BLM inventories, ID team knowledge, aerial photographs, field observations, maps, etc.)

Conduct field reviews as necessary to verify information and to ascertain current conditions. Reach conclusions on current conditions including boundaries, size of areas and presence or absence of wilderness characteristics. Fully explain the basis for each conclusion on form 2, including any critical differences between BLM and citizen information.

Document your findings regarding current conditions for each inventoried area. Describe how the present conditions are similar to, or have changed from, the conditions documented in the original wilderness inventory. Document your findings on Form 2 for each inventory area. Cite to or attach data considered, including photographs, maps, GIS layers, field trip notes, project files, *etc.*

Year: 2010 Unit Number/Name: OR-034-101 — Pine Tree Ridge

**FORM 1 -- DOCUMENTATION OF BLM WILDERNESS INVENTORY
FINDINGS ON RECORD**

1. Is there existing BLM wilderness inventory information on all or part of this area?

Yes X No _____ (If yes, and if more than one unit is within the area, list the names of those units.):

A.) Inventory Source(s) -- (X) Denotes all applicable BLM Inventory files, printed maps, or published BLM Decision documents with information pertaining to this unit.

Wilderness Inventories

- **(X)**1978 -- BLM Wilderness Inventory Unit OR-03-01-05 Pine Tree Ridge (unpublished BLM documents case files)
- **()** April 1979 – *Wilderness -- Proposed Initial Inventory – Roadless Areas and Islands Which Clearly Do Not have Wilderness Characteristics, Oregon and Washington*

Wilderness Decision Documents

- **()** August 1979 – *Wilderness Review – Initial Inventory, Final Decision on Public Lands Obviously Lacking Wilderness Characteristics and Announcement of Public Lands to be Intensively Inventoried for Wilderness Characteristics, Oregon and Washington* (green document)
- **()** October 1979 – *Wilderness Review – Intensive Inventory - Oregon, Proposed Decision on the Intensive Wilderness Inventory of Selected Areas* (grey document)
- **()** March 1980 – *Wilderness Review – Intensive Inventory; Final Decisions on 30 Selected Units in Southeast Oregon and Proposed Decisions on Other Intensively Inventoried Units in Oregon and Washington* (orange document)
- **()** November 1980 - *Wilderness Inventory – Oregon and Washington, Final Intensive Inventory Decisions* (brown document)
- **()** November 1981 *Stateline Intensive Wilderness Inventory Final Decision, Oregon, Idaho, Nevada, Utah* (tan document)

B.) Inventory Unit Name(s)/Number(s)

Partially of BLM OR-03-01-05 Pine Tree Ridge

C.) Map Name(s)/Number(s)

- **()** Final Decision – Initial Wilderness Inventory Map, August 1979, Oregon
- **()** Proposed Decision -- Intensive Wilderness Inventory of Selected Areas Map, October 1979, Oregon
- **()** Intensive Wilderness Inventory Map, March 1980, Oregon
- **()** Intensive Wilderness Inventory --Final Decisions Map, November 1980, Oregon
- **()** November, 1981 *Stateline Intensive Wilderness Inventory Final Decision, Oregon, Idaho, Nevada, Utah* (tan document)

D.) BLM District(s)/Field Office(s)

Vale District/Malheur Resource Area

2. BLM Inventory Findings on Record

(Existing inventory information regarding wilderness characteristics (if more than one BLM inventory unit is associated with the area, list each unit and answer each question individually for each inventory unit):

Inventory Source: See above.

Unit#/ Name	Size (historic acres)	Natural Condition? Y/N	Outstanding Solitude? Y/N	Outstanding Primitive & Unconfined Recreation? Y/N	Supplemental Values? Y/N
Partially of OR-03-01-05 Pine Tree Ridge	7,430*	*	*	*	*
TOTAL	7,430				

* -- This unit consisted of several sub-parcels separated by what were determined to be roads, the largest parcel being less than 5,000 acres (4,280 acres). Thus, none of the unit's sub-parcels met any size criteria, so these criteria were not addressed.

H-6300-1-WILDERNESS INVENTORY MAINTENANCE IN BLM OREGON/WASHINGTON

APPENDIX B – INVENTORY AREA EVALUATION

Evaluation of Current Conditions:

- 1) Document and review the existing BLM wilderness inventory findings on file, if available, regarding the presence or absence of individual wilderness characteristics, using Form 1, below.
- 2) Consider relevant information regarding current conditions available in the office to identify and describe any changes to the existing information (use interdisciplinary (ID) team knowledge, aerial photographs, field observations, maps, etc.), and document your findings on Form 2, below.

When Citizen Information has been submitted regarding wilderness characteristics, document the submitted materials including: date of Submission; Name of District(s) and Field Office(s) Affected; Type of material Submitted (e.g. narrative, map, photo). Evaluate any submitted citizen information regarding the validity of proposed boundaries of the unit(s), the existence of roads and other boundary features, the size of the unit(s), and the presence or absence of wilderness characteristics based on relevant information available in the office (prior BLM inventories, ID team knowledge, aerial photographs, field observations, maps, etc.)

Conduct field reviews as necessary to verify information and to ascertain current conditions. Reach conclusions on current conditions including boundaries, size of areas and presence or absence of wilderness characteristics. Fully explain the basis for each conclusion on form 2, including any critical differences between BLM and citizen information.

Document your findings regarding current conditions for each inventoried area. Describe how the present conditions are similar to, or have changed from, the conditions documented in the original wilderness inventory. Document your findings on Form 2 for each inventory area. Cite to or attach data considered, including photographs, maps, GIS layers, field trip notes, project files, *etc.*

FORM 2 -- DOCUMENTATION OF CURRENT WILDERNESS INVENTORY CONDITIONS

Unit Number/Name: OR-034-101 — Pine Tree Ridge

Description of Current Conditions: [Include land ownership, location, topography, vegetation features and summary of major human uses/activities.]

1. Is the unit of sufficient size?

Yes X No

Description: Refer to this inventory unit's associated Map 1 for its location. The unit has 6,783 acres of public land. The unit's boundaries differ somewhat from BLM's 1978 wilderness characteristics inventory, in part because – unlike the original OR-03-01-05 unit -- this present unit does not include separated public land parcels. Furthermore, two routes of OR-03-01-05 then determined to be roads which further split up this original unit (thus creating sub-parcels, none which met any size criteria) have changed status to motorized primitive trails (MPTs) because no known mechanical maintenance has been performed on them and with BLM presently not intending to conduct such maintenance on those routes in the foreseeable future.

The boundaries of OR-034-101 are private lands on its east side, private lands and County road 1139 on its north side, County road 751 on its east side, and County road 906 on its south side. A mechanically widened strip (about 100 feet) along and abutting most of the south boundary road's length –serving as a wildfire break -- is apparent and serves as a boundary feature of the unit. A 40 acre private inholding is also a boundary feature of the unit. Boundary roads are mechanically maintained as required to provide for relatively regular and continuous use.

2. Is the unit in a natural condition?

Yes X No N/A

Description: The unit is dominated by broken terrain of rolling hills, low-profiled ridgelines and multidirectional drainage patterns. Elevations range from 2,280 to 3,380 feet. Vegetation is predominately sagebrush and both native and non-native grasses.

Refer to this unit's associated Map 1 and Map 2 for human imprints. There are 6.5 miles of rangeland fences, one developed spring and 11 miles of 8 MPTs (4 which are segments of one route dissected by private land parcels). There are also barely distinguishable segment remnants of an abandoned motorized vehicle route, and remnant debris associated with the now abandoned Redskull Well windmill located close to the unit's west boundary. There remains virtually no visual contrast of 2001 disc-drill and aerial seedings which, combined, affected substantial portions of the unit; there also is no visual contrast of a 2006 disc-drill seeding of both native and non-native grasses which covered a small corridor along or near the unit's south boundary road. The unit appears to be

affected primarily by the forces of nature with the imprint of humans substantially unnoticeable to the average visitor.

3. Does the unit have outstanding opportunities for solitude?

Yes _____ No X N/A _____

Description: The unit has insufficient vegetative cover for screening between visitors to provide for outstanding opportunities for solitude. The unit's configuration is such that its northern approximate quarter is joined with the rest of the unit by only a narrow neck of public land, affectively providing no settings in this northern sector of sufficient size, configuration and/or adequate topographic relief for outstanding opportunities for solitude to the average visitor. The remainder of the unit is 1.5 to 2.2 miles wide by 3 to 4.5 miles in length. While this area of the unit provides some settings where a visitor would sense being isolated due to the nature of its varied terrain, this area's dimensions and size (just over 5,000 acres) – in combination with its continuity of public lands disrupted by the centrally located private inholding and the area's narrow width – does not possess sufficient topographic diversity or magnitude to provide outstanding opportunities for solitude to the average visitor.

4. Does the unit have outstanding opportunities for primitive and unconfined recreation?

Yes _____ No X N/A _____

Description: The primary recreation is hunting of common game species (primarily deer and chukar) and associated hiking. The unit possesses no special or unique features which would draw visitors to it. Individually or in combinations, the activities do not provide outstanding opportunities for primitive and unconfined recreation

5. Does the unit have supplemental values?

Yes X No _____ N/A _____

Description: Two small sites of Oregon Princesplume (*Stanleya confertiflora*) – a BLM special status plant species -- have been documented. The unit's west boundary road is the same route as the congressionally designated Tub Mountain segment of the National Historic Oregon Trail. Respectively, a small portion of the Trail's corridor setting is within the inventory unit (there are no known traces of the traveled trail, itself, within the inventory unit) and is included in BLM Vale District's administratively designated National Historic Oregon Trail Area of Critical Environmental Concern (not displayed on Map 1 or Map 2).

Summary of Findings and Conclusion

Unit Name and Number: OR-034-101 — Pine Tree Ridge

Summary Results of Analysis:

1. Does the area meet any of the size requirements? Yes No
2. Does the area appear to be natural? Yes No
3. Does the area offer outstanding opportunities for solitude or a primitive and unconfined type of recreation? Yes No NA
4. Does the area have supplemental values? Yes No NA

Conclusion -- check one:

- The area, or a portion of the area, has wilderness character.
- The area does not have wilderness character.

Prepared by: Robert Alward
Robert Alward, Wilderness Planner contractor

Team Members:

<u>Garry Brown</u>	<u>12/6/10</u>
Garry Brown, Rangeland Management Specialist	Date
<u>Dan Thomas</u>	<u>12/6/10</u>
Dan Thomas, Range Technician	Date
<u>Gillian Wigglesworth</u>	<u>12/6/10</u>
Gillian Wigglesworth, Botanist	Date
<u>Michelle Caviness</u>	<u>12/16/10</u>
Michelle Caviness, Wildlife Biologist	Date
<u>Eian Ray</u>	<u>12-6-10</u>
Eian Ray, GIS Specialist, contractor	Date
<u>Brent Grasty</u>	<u>12/9/10</u>
Brent Grasty, GIS Coordinator	Date

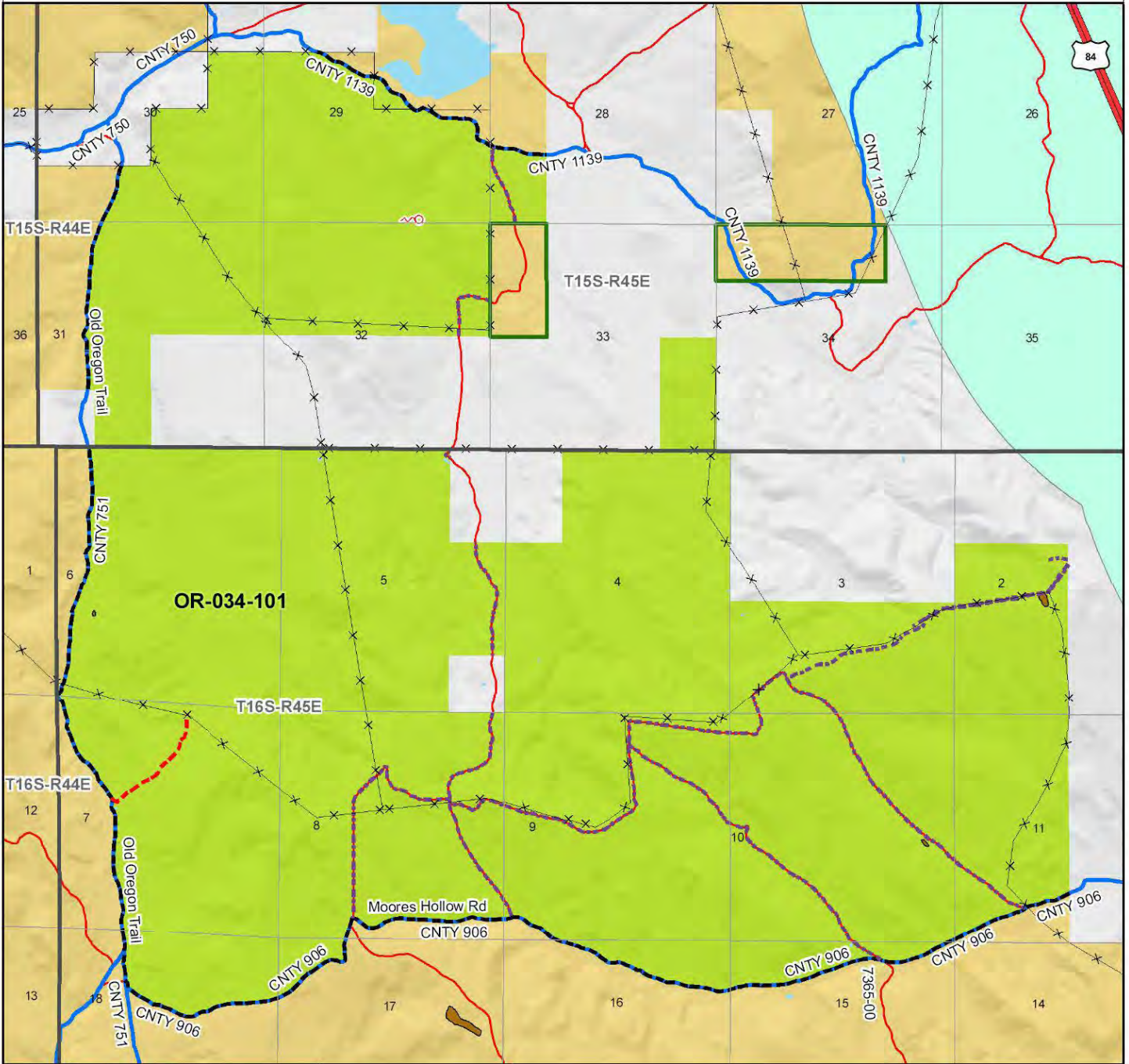
Approved by:

Pat Ryan 12/13/10
Pat Ryan, Malheur Resource Area Field Manager Date

This form documents information that constitutes an inventory finding on wilderness characteristics. It does not represent a formal land use allocation or a final agency decision subject to administrative remedies under either 43 CFR parts 4 or 1610.5-2.

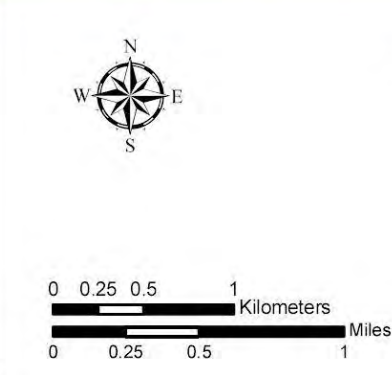
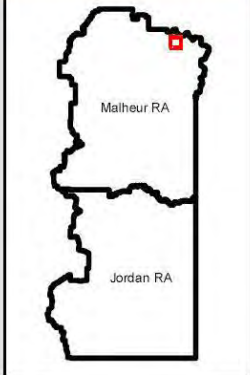
Wilderness Characteristics - Overview

Pine Tree Ridge - OR-034-101 - Map 1 of 2



Legend

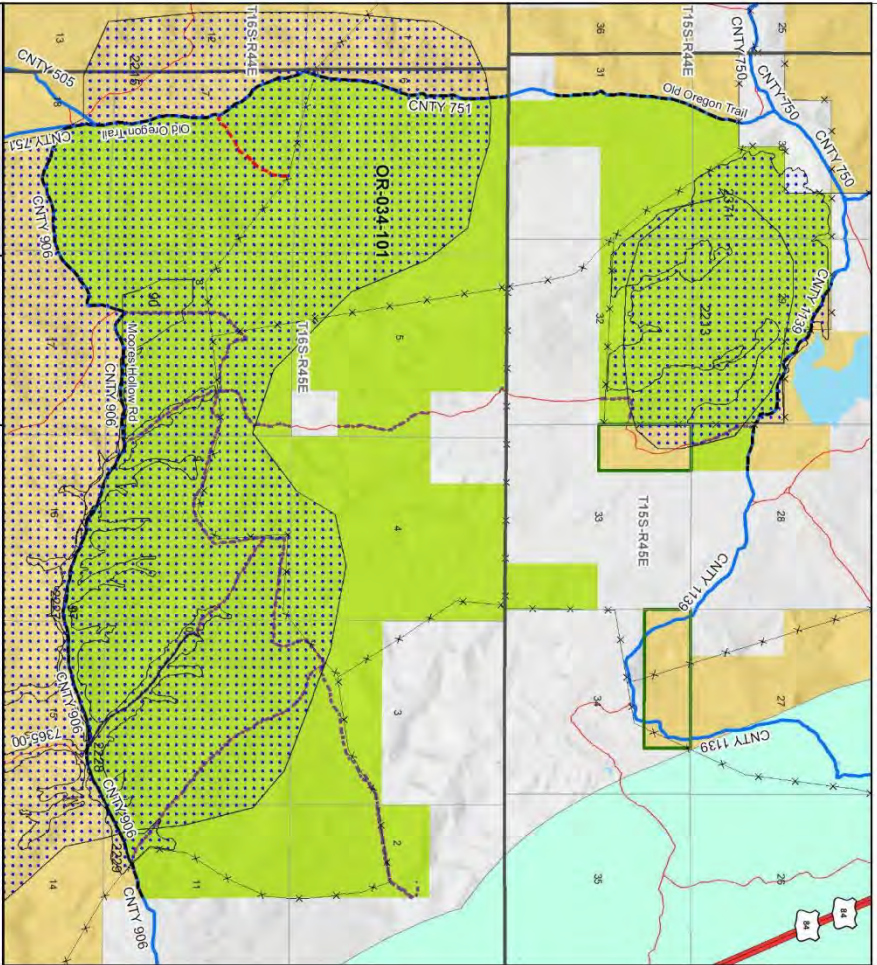
- | | |
|---|--|
| <ul style="list-style-type: none"> Developed Spring Wildlife Guzzler Earthen Reservoir Pipeline Trough Fence Storage Tank Surface Mining Disturbance Sage Grouse Lek Special Status Plant BLM Wild Char Inventory Unit Wilderness Study Area Mineral Material Site Road/Utility Right-of-Way Major Water Body | <ul style="list-style-type: none"> Route Types - BLM Determination Boundary Road Motorized Primitive Trail (MPT) Discontinued Use Routes - Outside Wild Char Unit County Major Highway BLM Numbered & Other Routes Land Ownership Bureau of Land Management State Private Other Federal Land |
|---|--|



U.S. DEPARTMENT OF THE INTERIOR
 BUREAU OF LAND MANAGEMENT

VALE DISTRICT
 September 22, 2010
No warranty is made by the Bureau of Land Management as to the accuracy, reliability, or completeness of these data for individual or aggregate use with other data. Original data were compiled from various sources. This information may not meet National Map Accuracy Standards. This product was developed through digital means and may be updated without notification.
--FINAL--

Wilderness Characteristics - Land Treatments
Pine Tree Ridge - OR-034-101 - Map 2 of 2



Wilderness Characteristics - Land Treatments
Pine Tree Ridge - OR-034-101 - Map 2 of 2

OBJECTID*	NAME	TREATMENT TYPE	SEED GROUP	DATE
90	MUD SPRINGS FIRE ESR	Drill Seeding	Native Grasses	2006/1/01
97	MUD SPRINGS FIRE ESR	Drill Seeding	Non-native Grasses	2006/1/01
2213	JACKSON FIRE REHAB	Aerial Seeding	Shrubs	2007/10/1
2215	JACKSON FIRE REHAB	Aerial Seeding	Shrubs	2007/10/1
2227	JACKSON FIRE REHAB	Drill Seeding	Unknown	2007/10/1
2228	JACKSON FIRE REHAB	Drill Seeding	Unknown	2007/10/1
2229	JACKSON FIRE REHAB	Drill Seeding	Unknown	2007/10/1
2371	JACKSON FIRE REHAB	Drill Seeding	Unknown	2007/10/1

Note: The Land Treatments represented by many blue dots on the map to the left are labeled with the treatments ObjectIDs listed in the first field of the Land Treatments table shown above. Multiple types of treatments may have been applied to the same area. For example, one treatment area may have been plowed and drill seeded - a record is shown in the table for each type of treatment.

U.S. DEPARTMENT OF THE INTERIOR
 BUREAU OF LAND MANAGEMENT

VALE DISTRICT
 September 22, 2010

No warranty is made by the Bureau of Land Management as to the accuracy of the information presented on this map. The user assumes all responsibility for the use of the information presented on this map. The Bureau of Land Management is not responsible for any errors or omissions on this map.

0 0.4 0.8 1.6 Kilometers
 0 0.3 0.6 1.2 Miles

—FINAL—