

Wilderness Inventory Unit Index of Documents
Oregon Canyon Mountain OR-036-050, 10 total pages

Page 1: Index Cover Sheet

[Page 2: Form 1 – Documentation of BLM Wilderness Inventory: Findings on Record](#)

[Page 5: Form 2 – Documentation of Current Wilderness Inventory Conditions](#)

[Page 8: Form 2 – Summary of Findings and Conclusion](#)

[Page 9: Wilderness Characteristics Overview–Oregon Canyon Mtn OR-036-050 Map 1](#)

[Page 10: Wilderness Characteristics-Land Treatments-Oregon Canyon Mtn OR-036-050 Map 2 of 2](#)

Prepared by:
U.S. Department of the Interior
Bureau of Land Management
Vale District Office
100 Oregon Street
Vale, Oregon 97918



H-6300-1-WILDERNESS INVENTORY MAINTENANCE IN BLM OREGON/WASHINGTON

APPENDIX B – INVENTORY AREA EVALUATION

Evaluation of Current Conditions:

- 1) Document and review the existing BLM wilderness inventory findings on file, if available, regarding the presence or absence of individual wilderness characteristics, using Form 1, below.

- 2) Consider relevant information regarding current conditions available in the office to identify and describe any changes to the existing information (use interdisciplinary (ID) team knowledge, aerial photographs, field observations, maps, etc.), and document your findings on Form 2, below.

When Citizen Information has been submitted regarding wilderness characteristics, document the submitted materials including: date of Submission; Name of District(s) and Field Office(s) Affected; Type of material Submitted (e.g. narrative, map, photo). Evaluate any submitted citizen information regarding the validity of proposed boundaries of the unit(s), the existence of roads and other boundary features, the size of the unit(s), and the presence or absence of wilderness characteristics based on relevant information available in the office (prior BLM inventories, ID team knowledge, aerial photographs, field observations, maps, etc.)

Conduct field reviews as necessary to verify information and to ascertain current conditions. Reach conclusions on current conditions including boundaries, size of areas and presence or absence of wilderness characteristics. Fully explain the basis for each conclusion on form 2, including any critical differences between BLM and citizen information.

Document your findings regarding current conditions for each inventoried area. Describe how the present conditions are similar to, or have changed from, the conditions documented in the original wilderness inventory. Document your findings on Form 2 for each inventory area. Cite to or attach data considered, including photographs, maps, GIS layers, field trip notes, project files, *etc.*

Year: 2010 Unit Number/Name: OR-036-050 -- Oregon Canyon Mountain

FORM 1 -- DOCUMENTATION OF BLM WILDERNESS INVENTORY FINDINGS ON RECORD

1. Is there existing BLM wilderness inventory information on all or part of this area?

Yes No **X** (If yes, and if more than one unit is within the area, list the names of those units.):

NOTE: see note below the table of this Form 1.

A.) Inventory Source(s) -- (X) Denotes all applicable BLM Inventory files, printed maps, or published BLM Decision documents with information pertaining to this unit.

Wilderness Inventories

- (**X**) 1978-1980 – BLM Wilderness Inventory Unit partially of OR-03-12-07 * (unpublished BLM documents in case files)
(* -- **NOTE:** See “*” note following the table, below.)
- () April 1979 – *Wilderness -- Proposed Initial Inventory – Roadless Areas and Islands Which Clearly Do Not have Wilderness Characteristics, Oregon and Washington*

Wilderness Decision Documents

- () August 1979 – *Wilderness Review – Initial Inventory, Final Decision on Public Lands Obviously Lacking Wilderness Characteristics and Announcement of Public Lands to be Intensively Inventoried for Wilderness Characteristics, Oregon and Washington* (green document)
- () October 1979 – *Wilderness Review – Intensive Inventory - Oregon, Proposed Decision on the Intensive Wilderness Inventory of Selected Areas* (grey document)
- () March 1980 – *Wilderness Review – Intensive Inventory; Final Decisions on 30 Selected Units in Southeast Oregon and Proposed Decisions on Other Intensively Inventoried Units in Oregon and Washington* (orange document)
- () November 1980 - *Wilderness Inventory – Oregon and Washington, Final Intensive Inventory Decisions* (brown document)
- () November 1981 *Stateline Intensive Wilderness Inventory Final Decision, Oregon, Idaho, Nevada, Utah* (tan document)

B.) Inventory Unit Name(s)/Number(s)

Partially of BLM OR-03-12-07

C.) Map Name(s)/Number(s)

- () Final Decision – Initial Wilderness Inventory Map, August 1979, Oregon
- () Proposed Decision -- Intensive Wilderness Inventory of Selected Areas Map, October 1979, Oregon
- () Intensive Wilderness Inventory Map, March 1980, Oregon
- () Intensive Wilderness Inventory --Final Decisions Map, November 1980, Oregon
- () November, 1981 *Stateline Intensive Wilderness Inventory Final Decision, Oregon, Idaho, Nevada, Utah* (tan document)

D.) BLM District(s)/Field Office(s)
 Vale District/Jordan Resource Area

2. BLM Inventory Findings on Record

(Existing inventory information regarding wilderness characteristics (if more than one BLM inventory unit is associated with the area, list each unit and answer each question individually for each inventory unit):

Inventory Source: See above.

Unit#/ Name	Size (historic acres)	Natural Condition? Y/N	Outstanding Solitude? Y/N	Outstanding Primitive & Unconfined Recreation? Y/N	Supplemental Values? Y/N
OR-03-12-07 *					
TOTAL					

* -- This late 1970's wilderness characteristics inventory unit is associated with what became Fifteenmile Creek WSA (OR-3-156). Thus, any associated documentation is located in the Vale District's black 3-ring binder for that WSA, the WSA's associated district master maps and information provided in the Oregon BLM *Wilderness EIS* and Oregon BLM 1991 *Wilderness Study Report*.

H-6300-1-WILDERNESS INVENTORY MAINTENANCE IN BLM OREGON/WASHINGTON

APPENDIX B – INVENTORY AREA EVALUATION

Evaluation of Current Conditions:

- 1) Document and review the existing BLM wilderness inventory findings on file, if available, regarding the presence or absence of individual wilderness characteristics, using Form 1, below.
- 2) Consider relevant information regarding current conditions available in the office to identify and describe any changes to the existing information (use interdisciplinary (ID) team knowledge, aerial photographs, field observations, maps, etc.), and document your findings on Form 2, below.

When Citizen Information has been submitted regarding wilderness characteristics, document the submitted materials including: date of Submission; Name of District(s) and Field Office(s) Affected; Type of material Submitted (e.g. narrative, map, photo). Evaluate any submitted citizen information regarding the validity of proposed boundaries of the unit(s), the existence of roads and other boundary features, the size of the unit(s), and the presence or absence of wilderness characteristics based on relevant information available in the office (prior BLM inventories, ID team knowledge, aerial photographs, field observations, maps, etc.)

Conduct field reviews as necessary to verify information and to ascertain current conditions. Reach conclusions on current conditions including boundaries, size of areas and presence or absence of wilderness characteristics. Fully explain the basis for each conclusion on form 2, including any critical differences between BLM and citizen information.

Document your findings regarding current conditions for each inventoried area. Describe how the present conditions are similar to, or have changed from, the conditions documented in the original wilderness inventory. Document your findings on Form 2 for each inventory area. Cite to or attach data considered, including photographs, maps, GIS layers, field trip notes, project files, *etc.*

FORM 2 -- DOCUMENTATION OF CURRENT WILDERNESS INVENTORY CONDITIONS

Unit Number/Name: OR-036-050 -- Oregon Canyon Mountain

Description of Current Conditions: [Include land ownership, location, topography, vegetation features and summary of major human uses/activities.]

1. Is the unit of sufficient size?

Yes X No _____

Description: Refer to this unit's associated Map 1 for its location. The unit has 8,247 acres of public land. The unit boundary consists of BLM 6301-0-00 road on its north and northeast sides, a very short segment of BLM 8311-A0-00 road on its north west side, and another road crossing public land and private property on its west side. The BLM and county roads receive mechanical maintenance as needed to keep them passable on a relatively regular and seasonally continuous basis. A 3.7 mile cherry stem road is also a boundary feature of this inventory unit.

The unit is also contiguous to Fifteenmile Creek WSA (OR-3-156) at the unit's southernmost tip and along the south half of the unit's east side. It is contiguous to the WSA on its south tip because only a rim separates the unit from the WSA; and on its southeastern side because the WSA boundary at this location consists only of a rangeland fence. These do not qualify as boundary features for this wilderness characteristics inventory maintenance.

2. Is the unit in a natural condition?

Yes X No _____ N/A _____

Description: The unit contains a northern extension of the north-south trending ridge system of Oregon Canyon Mountain, it being dissected by both Fish Creek and a branch of Whitehorse Creek within the unit. The various slopes and drainages of the ridge system are multi-directional and vary from steep to very steep gradients. There is also a prominent butte in the unit's north sector. Elevations range from 4,362 to 5,582 feet. Vegetation is dominated by sagebrush and native and nonnative range grasses. The northern portion of the unit is within the Coyote Lake Wild Horse Herd Management Area.

Refer to the unit's associated Map 1 and Map 2 for human imprints. There is 11.6 miles of rangeland fence, 5 miles of 4 motorized primitive trails (MPTs), and one earthen reservoir with 2 fenced enclosures (Big Hole Reservoir in section 15; enclosures not depicted on Map 1 or Map 2). There remains no visual evidence of a half-mile long

abandoned motorized vehicle route. The expansive 1972 – 1975 disc-drilled seedings of non-native grasses -- the linear furrows of which were visually apparent during BLM's late 1970's inventory -- are no longer a visual contrast to the average visitor. This visual change since the late 1970's associated with the seedings, combined with the type, distribution and location of other existing developments results in the unit presently appearing to be primarily affected by the forces of nature with the imprint of humans being substantially unnoticeable to the average visitor. Additionally, with the unit being contiguous with the WSA, the natural appearing state of both the unit and the WSA do, overall, complement each other.

3. Does the unit have outstanding opportunities for solitude?

Yes X No _____ N/A _____

Description: Within the unit, itself, there is insufficient height or density of vegetation to provide for outstanding opportunities for solitude. The diversity of the unit's multi-directional slopes combined with the unit's configuration provides settings where a visitor would have a quality sense of feeling alone. However, it is more so the contiguous nature of the unit with the WSA which – with the already outstanding opportunities for solitude within it – increases the overall size of area of which continues to provide outstanding opportunities for solitude.

4. Does the unit have outstanding opportunities for primitive and unconfined recreation?

Yes X No _____ N/A _____

Description: With the unit being contiguous with the WSA, many of the outstanding opportunities for primitive and unconfined recreation associated with it extend into this inventory unit. Examples include but are not limited to wildlife viewing, panoramic (from the Mountain's ridge system) and geologic sightseeing, hiking, backpacking, and hunting of big game (primarily deer; some of bighorn sheep).

5. Does the unit have supplemental values?

Yes X No _____ N/A _____

Description: A portion of the unit is within the Coyote Lake Wild Horse Herd Management Area. The entire unit is of suitable bighorn sheep habitat.

Summary of Findings and Conclusion

Unit Name and Number: OR-036-050 -- Oregon Canyon Mountain

Summary Results of Analysis:

- 1. Does the area meet any of the size requirements? Yes No
- 2. Does the area appear to be natural? Yes No
- 3. Does the area offer outstanding opportunities for solitude or a primitive and unconfined type of recreation? Yes No NA
- 4. Does the area have supplemental values? Yes No NA

Conclusion -- check one:

The area, or a portion of the area, has wilderness character.

The area does not have wilderness character.

Prepared by: 
Robert Alward, Wilderness Planner, contractor

Team Members:

<u></u>	<u>4/29/10</u>
Richard White, Range Management Specialist	Date
<u></u>	<u>5/17/10</u>
Marcy Egger, Range Management Specialist	Date
<u></u>	<u>4-28-2010</u>
Jon Sadowski, Environmental Contractor	Date
<u></u>	<u>5/17/10</u>
Jack Wenderoth, Planning contractor	Date
<u></u>	<u>5-14-10</u>
Eian Ray, GIS Specialist, contractor	Date
<u></u>	<u>5/14/10</u>
Brent Grasty, GIS Coordinator	Date

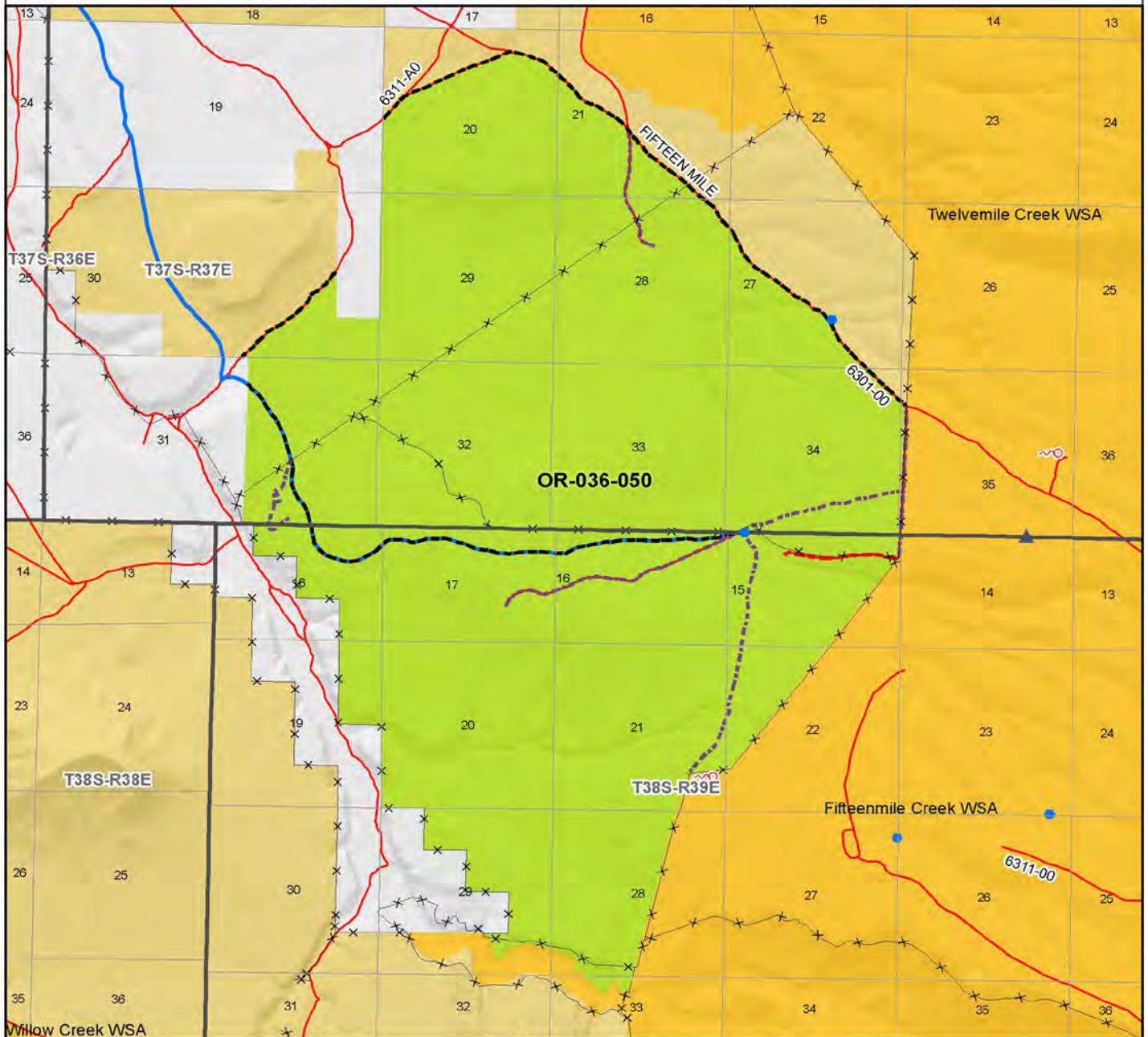
Approved by:

 7/19/2010
Carolyn Freeborn, Jordan Resource Area Field Manager Date

This form documents information that constitutes an inventory finding on wilderness characteristics. It does not represent a formal land use allocation or a final agency decision subject to administrative remedies under either 43 CFR parts 4 or 1610.5-2.

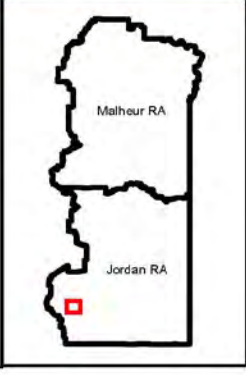
Wilderness Characteristics - Overview

Oregon Canyon Mountain - OR-036-050 - Map 1 of 2



Legend

Developed Spring	Route Types - BLM Determination
Wildlife Fuzzler	Boundary Road
Earthen Reservoir	Motorized Primitive Trail (MPT)
Pipeline	Discontinued Use
Trough	Routes - Outside Wild Char Unit
Fence	County
Storage Tank	Major Highway
Surface Mining Disturbance	BLM Numbered & Other Routes
Sage Grouse Lek	Land Ownership
Special Status Plant	Bureau of Land Management
BLM Wild Char Inventory Unit	State
Wilderness Study Area	Private
Mineral Material Site	Other Federal Land
Road/Utility Right-of-Way	
Major Water Body	



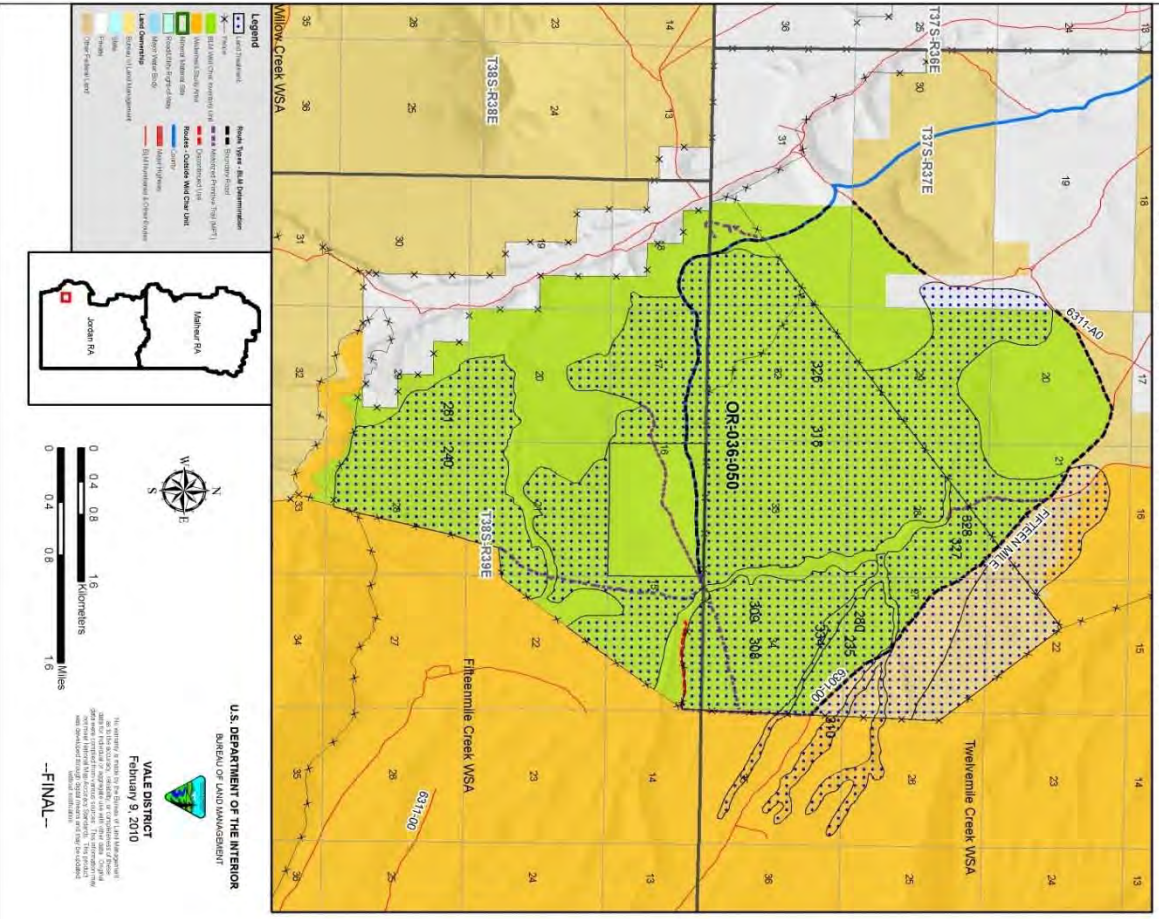
U.S. DEPARTMENT OF THE INTERIOR
BUREAU OF LAND MANAGEMENT

VALE DISTRICT
February 9, 2010

No warranty is made by the Bureau of Land Management as to the accuracy, reliability, or completeness of these data for individual or aggregate use with other data. Original data were compiled from various sources. This information may not meet National Map Accuracy Standards. This product was developed through digital means and may be updated without notification.

--FINAL--

Wilderness Characteristics - Land Treatments
Oregon Canyon Mountain - OR-036-050 - Map 2 of 2



Wilderness Characteristics - Land Treatments
Oregon Canyon Mountain - OR-036-050 - Map 2 of 2

OBJECTID*	NAME	TREATMENT TYPE	SEED GROUP	DATE
236	FISH CR SDG	Chemical Treatment	Not Applicable	1972
240	FISH CR SDG	Chemical Treatment	Not Applicable	1972
280	FISH CR SDG	Drill Seeding	Non-native Grasses	1972
281	FISH CR SDG	Drill Seeding	Non-native Grasses	1972
308	FISH CR SDG	Chemical Treatment	Not Applicable	1972
309	FISH CR SDG	Drill Seeding	Non-native Grasses	1972
310	FISH CR AERIAL SDG	Aerial Seeding	Non-native Grasses	1975
318	FISH CR SDG	Chemical Treatment	Not Applicable	1972
326	FISH CR SDG	Drill Seeding	Non-native Grasses	1972
327	FISH CR SDG	Chemical Treatment	Not Applicable	1972
328	FISH CR SDG	Drill Seeding	Non-native Grasses	1972
334	FISH CR REHAB	Drill Seeding	Non-native Grasses	1975

Note: The Land Treatments represented by navy blue dots on the map to the left are labeled with the treatments ObjectIDs listed in the first field of the Land Treatments table shown above. Multiple types of treatments may have been applied to the same area. For example, one treatment area may have been plowed and drill seeded - a record is shown in the table for each type of treatment.