

Wilderness Inventory Unit Index of Documents  
**2018 Revised - Owyhee River Contiguous OR-036-091\*, 17 total pages**

Page 1: Index Cover Sheet

[Page 2: Form 1 – Documentation of BLM Wilderness Inventory: Findings on Record](#)

[Page 5: Form 2 – Documentation of Current Wilderness Inventory Conditions](#)

[Page 10: Form 2 – Summary of Findings and Conclusion](#)

[Page 11: Wilderness Characteristics Overview–Owyhee River Contiguous OR-036-091 Map 1A of 2](#)

[Page 12: Wilderness Characteristics Overview–Owyhee River Contiguous OR-036-091 Map 1B of 2](#)

[Page 13: Wilderness Characteristics Overview–Owyhee River Contiguous OR-036-091 Map 1C of 2](#)

[Page 14: Wilderness Characteristics Overview–Owyhee River Contiguous OR-036-091 Map 1D of 2](#)

[Page 15: Wilderness Characteristics Overview–Owyhee River Contiguous OR-036-091 Map 1E of 2](#)

[Page 16: Wilderness Characteristics-Land Treatments-Owyhee River Contiguous OR-036-091 Map 2A of 2](#)

[Page 17: Wilderness Characteristics-Land Treatments-Owyhee River Contiguous OR-036-091 Map 2B of 2](#)

\*The inventory of this unit was updated in 2010. However, due to a State Office sponsored wilderness consistency evaluation and subsequent guidance, the 2010 inventory analysis and findings are being replaced by this current 2018 inventory review. Documentation of the 2010 inventory can be found in the wilderness inventory project record.

**Prepared by:**  
**U.S. Department of the Interior**  
**Bureau of Land Management**  
**Vale District Office**  
**100 Oregon Street**  
**Vale, Oregon 97918**



## **H-6300-1-WILDERNESS INVENTORY MAINTENANCE IN BLM OREGON/WASHINGTON**

### **APPENDIX B – INVENTORY AREA EVALUATION**

#### **Evaluation of Current Conditions:**

- 1) Document and review the existing BLM wilderness inventory findings on file, if available, regarding the presence or absence of individual wilderness characteristics, using Form 1, below.
- 2) Consider relevant information regarding current conditions available in the office to identify and describe any changes to the existing information (use interdisciplinary (ID) team knowledge, aerial photographs, field observations, maps, etc.), and document your findings on Form 2, below.

When Citizen Information has been submitted regarding wilderness characteristics, document the submitted materials including: date of Submission; Name of District(s) and Field Office(s) Affected; Type of material Submitted (e.g. narrative, map, photos). Evaluate any submitted citizen information regarding the validity of proposed boundaries of the unit(s), the existence of roads and other boundary features, the size of the unit(s), and the presence or absence of wilderness characteristics based on relevant information available in the office (prior BLM inventories, ID team knowledge, aerial photographs, field observations, maps, etc.)

Conduct field reviews as necessary to verify information and to ascertain current conditions. Reach conclusions on current conditions including boundaries, size of areas and presence or absence of wilderness characteristics. Fully explain the basis for each conclusion on form 2, including any critical differences between BLM and citizen information.

Document your findings regarding current conditions for each inventoried area. Describe how the present conditions are similar to, or have changed from, the conditions documented in the original wilderness inventory. Document your findings on Form 2 for each inventory area. Cite to or attach data considered, including photographs, maps, GIS layers, field trip notes, project files, *etc.*

**Year:** 2018      **Unit Number/Name:** OR-036-091—Owyhee River Contiguous

**FORM 1 -- DOCUMENTATION OF BLM WILDERNESS INVENTORY FINDINGS ON RECORD**

**1. Is there existing BLM wilderness inventory information on all or part of this area?**

Yes  No  (If yes, and if more than one unit is within the area, list the names of those units.):

**A.) Inventory Source(s) -- (X) Denotes all applicable BLM Inventory files, printed maps, or published BLM Decision documents with information pertaining to this unit.**

**Wilderness Inventories**

- (X) 1978-1981 – BLM Wilderness Inventory Unit OR-03-11-01 Owyhee River that includes 3-143 of 3-195 (unpublished BLM documents stored in Vale District case files)
- (X) April 1979 – *Wilderness -- Proposed Initial Inventory – Roadless Areas and Islands Which Clearly Do Not have Wilderness Characteristics, Oregon and Washington*

**Wilderness Decision Documents**

- (X) August 1979 – *Wilderness Review – Initial Inventory, Final Decision on Public Lands Obviously Lacking Wilderness Characteristics and Announcement of Public Lands to be Intensively Inventoried for Wilderness Characteristics, Oregon and Washington* (green document)
- ( ) October 1979 – *Wilderness Review – Intensive Inventory - Oregon, Proposed Decision on the Intensive Wilderness Inventory of Selected Areas* (grey document).
- (X) March 1980 – *Wilderness Review – Intensive Inventory; Final Decisions on 30 Selected Units in Southeast Oregon and Proposed Decisions on Other Intensively Inventoried Units in Oregon and Washington* (orange document)
- (X) November 1980 - *Wilderness Inventory – Oregon and Washington, Final Intensive Inventory Decisions* (brown document)
- (X) November 1981 *Stateline Intensive Wilderness Inventory Final Decision, Oregon, Idaho, Nevada, Utah* (tan document).

**B.) Inventory Unit Name(s)/Number(s)**

BLM Unit OR-03-11-01 Owyhee River that includes 3-143 of 3-195

**C.) Map Name(s)/Number(s)**

- (X) Final Decision – Initial Wilderness Inventory Map, August 1979, Oregon
- (X) Proposed Decision -- Intensive Wilderness Inventory of Selected Areas Map, October 1979, Oregon
- (X) Intensive Wilderness Inventory Map, March 1980, Oregon
- (X) Intensive Wilderness Inventory --Final Decisions Map, November 1980, Oregon.
- (X) November, 1981 *Stateline Intensive Wilderness Inventory Final Decision, Oregon, Idaho, Nevada, Utah* (tan document).

**D.) BLM District(s)/Field Office(s)**

Vale District/Malheur Field Office (formerly Jordan Resource Area)

**2. BLM Inventory Findings on Record**

(Existing inventory information regarding wilderness characteristics (if more than one BLM inventory unit is associated with the area, list each unit and answer each question individually for each inventory unit):

**Inventory Source:** See above.

<b>Unit# / Name</b>	<b>Size (historic acres)</b>	<b>Natural Condition? Y/N</b>	<b>Outstanding Solitude? Y/N</b>	<b>Outstanding Primitive &amp; Unconfined Recreation? Y/N</b>	<b>Supplemental Values? Y/N</b>
3-195 of OR-03-11-01 Owyhee River	250,380	Y/NA*	Y/NA*	Y/NA*	Y/NA*
<b>TOTAL</b>	250,380				

\*-- These criteria were not specifically addressed during the inventory of this unit for areas within the boundaries of the unit that were private inholdings at the time of the 1978-1981 inventories but since have been acquired and are now public lands.

The inventory of this unit was updated in 2010. However, due to a State Office sponsored wilderness consistency evaluation and subsequent guidance, the 2010 inventory analysis and findings are being replaced by this current 2018 inventory review. Documentation of the 2010 inventory can be found in the wilderness inventory project record.

## **H-6300-1-WILDERNESS INVENTORY MAINTENANCE IN BLM OREGON/WASHINGTON**

### **APPENDIX B – INVENTORY AREA EVALUATION**

#### **Evaluation of Current Conditions:**

- 1) Document and review the existing BLM wilderness inventory findings on file, if available, regarding the presence or absence of individual wilderness characteristics, using Form 1, below.
- 2) Consider relevant information regarding current conditions available in the office to identify and describe any changes to the existing information (use interdisciplinary (ID) team knowledge, aerial photographs, field observations, maps, etc.), and document your findings on Form 2, below.

When Citizen Information has been submitted regarding wilderness characteristics, document the submitted materials including: date of Submission; Name of District(s) and Field Office(s) Affected; Type of material Submitted (e.g. narrative, map, and photos). Evaluate any submitted citizen information regarding the validity of proposed boundaries of the unit(s), the existence of roads and other boundary features, the size of the unit(s), and the presence or absence of wilderness characteristics based on relevant information available in the office (prior BLM inventories, ID team knowledge, aerial photographs, field observations, maps, etc.)

Conduct field reviews as necessary to verify information and to ascertain current conditions. Reach conclusions on current conditions including boundaries, size of areas and presence or absence of wilderness characteristics. Fully explain the basis for each conclusion on form 2, including any critical differences between BLM and citizen information.

Document your findings regarding current conditions for each inventoried area. Describe how the present conditions are similar to, or have changed from, the conditions documented in the original wilderness inventory. Document your findings on Form 2 for each inventory area. Cite to or attach data considered, including photographs, maps, GIS layers, field trip notes, project files, *etc.*

## **FORM 2 -- DOCUMENTATION OF CURRENT WILDERNESS INVENTORY CONDITIONS**

**Unit Name/Number:** OR-036-091—Owyhee River Contiguous

**Description of Current Conditions:** [Include land ownership, location, topography, vegetation features and summary of major human uses/activities.]

### **1. Is the unit of sufficient size?**

Yes   X   No       

**Description:** Refer to this inventory unit's associated Map 1 for BLM's Unit OR-036-091 location. BLM Unit OR-036-091 is comprised of eight areas totaling 7,704 acres of public land that are contiguous with the Owyhee River Canyon WSA. Traveling from northwest to southeast through the Owyhee River Canyon WSA and along the Owyhee River the northwestern most Area A consists of 636 acres; Area B consist of 447 acres; Area C consist of 31 acres; Area D consists of 6,006 acres; Area E consists of 131 acres; Area F consists of 284 acres; Area G consists of 42 acres; and Area H consists of 126 acres. Although all Areas except Area D do not meet the size requirement, each area is contiguous with the Owyhee River Canyon WSA Thus -- being contiguous to the WSA -- regardless of its size -- each of the eight contiguous areas meet size criteria. Areas A-E of BLM Unit OR-036-091 were once included within the original BLM Unit 3-143 partial of Unit OR-03-11-01, Owyhee River that was incorporated into Unit 3-195 Owyhee River Canyon with a total of 250,380 acres of which 216,680 are in Oregon and 33,700 acres are in Idaho. Areas F, G, and H were private land parcels acquired in 2006. Many of the Areas in the current inventory were excluded from the 1981 inventory of Unit 3-195. These were Subunits A- E in Unit 3-195. Acreage for Unit OR-036-091 in Form 2 is calculated from BLM GIS information.

The unit boundary for Area A consists of BLM Road 6367-00 on its north side, an unnumbered BLM Road on its northeast side, and is contiguous with the Owyhee River Canyon WSA on the area's south side. The unit boundary for Area B is the utility corridor for BLM Road 6366-00 and an unnumbered BLM Road on its east side, private land parcels on its south, north, and west sides and is contiguous with the Owyhee River Canyon WSA along its southwest boundary. The unit boundary for Area C consists of the utility corridor for BLM Road 6366-00 on its east side, an unnumbered BLM Road on its north side, private land parcels on its west side, and is contiguous with the Owyhee River Canyon WSA along Area C's southern boundary. The unit boundary for Area D consists of the utility corridor for BLM Road 6366-00 on its northeast side, the utility corridor for Malheur County Road 927 on its east and southeast sides, and is contiguous with the Owyhee River Canyon WSA on its west and southwest sides.

The unit boundary for Area E consists of the utility corridor for Malheur County Road 927 on its east and southeast sides and is contiguous with the Owyhee River Canyon WSA on all remaining sides. The unit boundary for Area F consists of Malheur County Road 822 on its east and southeast sides, state land parcels on its southeast side, and is contiguous with the Owyhee River Canyon WSA on all remaining sides. The unit boundary for Area G is contiguous with the Owyhee River Canyon WSA on all sides. The unit boundary for Area H consists of a private land parcel on the south side and is contiguous with the Owyhee River Canyon WSA on all remaining sides. BLM and County boundary roads for all areas are natural-surfaced that receive mechanical maintenance as needed to keep them passable on a regular and continuous (seasonal) basis.

## 2. Is the unit in a natural condition?

Yes  No  N/A

**Description:** BLM Unit OR-036-091 Area A consists mainly of an elevated bench, in the west/northwest portion of the unit that borders the Owyhee River Canyon WSA land adjacent to the Owyhee River Canyon Rim that is 400 to 500 feet above the Owyhee River. Elevation levels within Area A range from a low of 3,870 feet above mean sea level (msl) at the southwest boundary of the area to a high of 4,280 feet (msl) at the extreme southeast tip of the area. Area A is a narrow length of land between BLM Road 6367-00 and the boundary of the Owyhee River Canyon WSA. All stream channels that flow through the Area drain southward into the Owyhee River. Vegetation within the unit consists primarily of either big or low sagebrush that contain mostly non-native and small amounts of native grass species. Human imprints in Area A are 1.93 miles of three motorized primitive trails (MPTs), 2.03 miles of fence line, 0.93 miles of pipeline from one system, one reservoir, 2 corrals, and 9 vegetation treatments consisting of brush sprayings, seed drillings, and aerial seedings conducted from 1960 to 2003.

BLM Unit OR-036-091 Area B consists mainly of an elevated bench of nearly flat terrain that slopes gently to the south toward the Owyhee River. Elevation ranges from 4,520 feet in the northeastern corner of the Area to a low of 4,400 feet at a drainage along the southern boundary that flows into Soldier Creek. Area B is dissected by two small drainages that flow directly to Soldier Creek or to Spring Creek a tributary to Soldier Creek.

Vegetation within Area B consists primarily of either big or low sagebrush that contains predominately native grass species. Human imprints in Area B are 0.29 miles of two motorized primitive trails (MPTs) and 1.45 miles of fence line.

BLM Unit OR-036-091 Area C consists mainly of an elevated bench sloping down to a stream channel that contains Mud Flat Creek. Elevation within the area ranges from a high of 4,672 feet at the top of an elevated bench at the western boundary to a low of 4,500 feet at Mud Flat Creek at the north central boundary of the area. Area C contains no human developments. Vegetation within Area C consists primarily of either big or low sagebrush that contain native grass species.

BLM Unit OR-036-091 Area D consists mainly of an elevated bench sloping mostly to the south and draining into the Owyhee River. Elevation within the area ranges from a high of 4,861 feet south of Long Canyon to a low of 4,540 feet at Indian Canyon just downstream from Short Canyon. Vegetation within Area D consists primarily of either big or low sagebrush that contain mostly non-native and small quantities of native grass species. Human imprints in Area D are 9.85 miles of 12 motorized primitive trails (MPTs), 7 earthen reservoirs, 3.42 miles of fence line, and 5 vegetation treatments consisting of chemical brush spraying, a controlled burn, and the drilling of non-native grass species that were conducted from 1960 to 1963.

BLM Unit OR-036-091 Area E consists mainly of a steep side slope that extends from the top of the Owyhee River Canyon and downward to the Owyhee River. Elevation ranges from 4,540 feet in the northeastern corner of the Area to a low of 3,980 feet at the southeast corner of the Area just above the Owyhee River. Area E is dissected by numerous small drainages that flow directly the Owyhee River. Vegetation within Area E consists primarily of either big or low sagebrush that contains predominately native grass species. Human imprints in Area E are 0.61 miles of two motorized primitive trails (MPTs) and 0.05 miles of fence line.

BLM Unit OR-036-091 Area F consists mainly of steep canyon side slopes of the Owyhee River Canyon that startle two section of the Owyhee River. Elevation ranges from 4,620 feet in the southeastern corner of the Area to a low of 3,960 feet at the northeast corner of the Area on the Owyhee River. Area F is dissected by numerous small drainages that flow directly the Owyhee River. Vegetation within Area F consists primarily of either big or low sagebrush that contains predominately native grass species in the uplands and woody riparian species along the banks of the Owyhee River. Human imprints in Area F are 0.62 miles of one motorized primitive trail (MPTs) and numerous undeveloped hot springs along the Owyhee River.

BLM Unit OR-036-091 Area G consists mainly of steep side slopes of the Owyhee River Canyon that startles the Owyhee River. Elevation ranges from 4,320 feet in the northwestern corner of the Area to a low of 3,960 feet on the Owyhee River. Area G is dissected by numerous small drainages that flow directly the Owyhee River. Vegetation within Area G consists primarily of either big or low sagebrush that contains predominately native grass species in the uplands and woody riparian species along the banks of the Owyhee River.

BLM Unit OR-036-091 Area H consists mainly of steep side slopes of the Owyhee River Canyon that startles the Owyhee River. Elevation ranges from 4,660 feet in the southeastern corner of the Area to a low of 3,980 feet on the Owyhee River. Area H is dissected by numerous small drainages that flow directly the Owyhee River. Vegetation within Area E consists primarily of either big or low sagebrush that contains predominately native grass species in the uplands and woody riparian species along the banks of the Owyhee River.



Refer to BLM Unit OR-036-091 inventory associated Map 1A, 1B, 1C, 1D, 1E, and Map 2A and 2B for its human developments. Given each Areas size relative to the evidence of man-made developments and visual impacts of vegetative treatments conducted between 1960 and 2003 in areas A and D have diminished over time. They are now no longer visible to the casual observer. Also some primitive routes identified within area D are now barely distinguishable. Therefore all Areas (A, B, C, D, E, F, G and H in BLM unit OR-036-091 all appear to be affected primarily by the forces of nature with the imprint of humans substantially unnoticeable to the average visitor.

**3. Does the unit have outstanding opportunities for solitude?**

Yes  No  N/A

**Description:** Because all Areas (A,B,C,D,E,F,G, and H) in BLM unit OR-036-091 are contiguous with Owyhee River Canyon WSA and are part of the same roadless area that forms the WSA boundary, they share the same outstanding opportunities for solitude that are identified for the Owyhee River Canyon WSA. The BLM concludes that unit OR-036-091 provides outstanding opportunities for solitude.

**4. Does the unit have outstanding opportunities for primitive and unconfined recreation?**

Yes  No  N/A

**Description:** Because all Areas (A,B,C,D,E,F,G, and H) in BLM unit OR-036-091 are contiguous with Owyhee River Canyon WSA and are part of the same roadless area that forms the WSA boundary, they share the same outstanding opportunities for primitive and unconfined recreation that are identified for the Owyhee River Canyon WSA. The BLM concludes that unit OR-036-091 provides outstanding opportunities for primitive and unconfined recreation.

**5. Does the unit have supplemental values?**

Yes  No  N/A

**Description:** Owyhee Wild and Scenic River Corridor in Areas A, E, F, G, and H. None in Areas B, C, and D

**Summary of Findings and Conclusion**

**Unit Name and Number:** OR-036-091— Owyhee River Contiguous

**Summary Results of Analysis:**

- 1. Does the area meet any of the size requirements?   X   Yes        No
- 2. Does the area appear to be natural?        Yes   X   No
- 3. Does the area offer outstanding opportunities for solitude or a primitive and unconfined type of recreation?   X   Yes        No        NA
- 4. Does the area have supplemental values?   X   Yes   X   No        NA

**Conclusion -- check one:**

  X   The area, or a portion of the area, has wilderness character.

       The area does not have wilderness character.

**Wilderness Characteristics Interdisciplinary Team:**

Prepared By: Kim Points 9/11/18  
 Kari Points, Outdoor Recreation Planner, Vale District Date

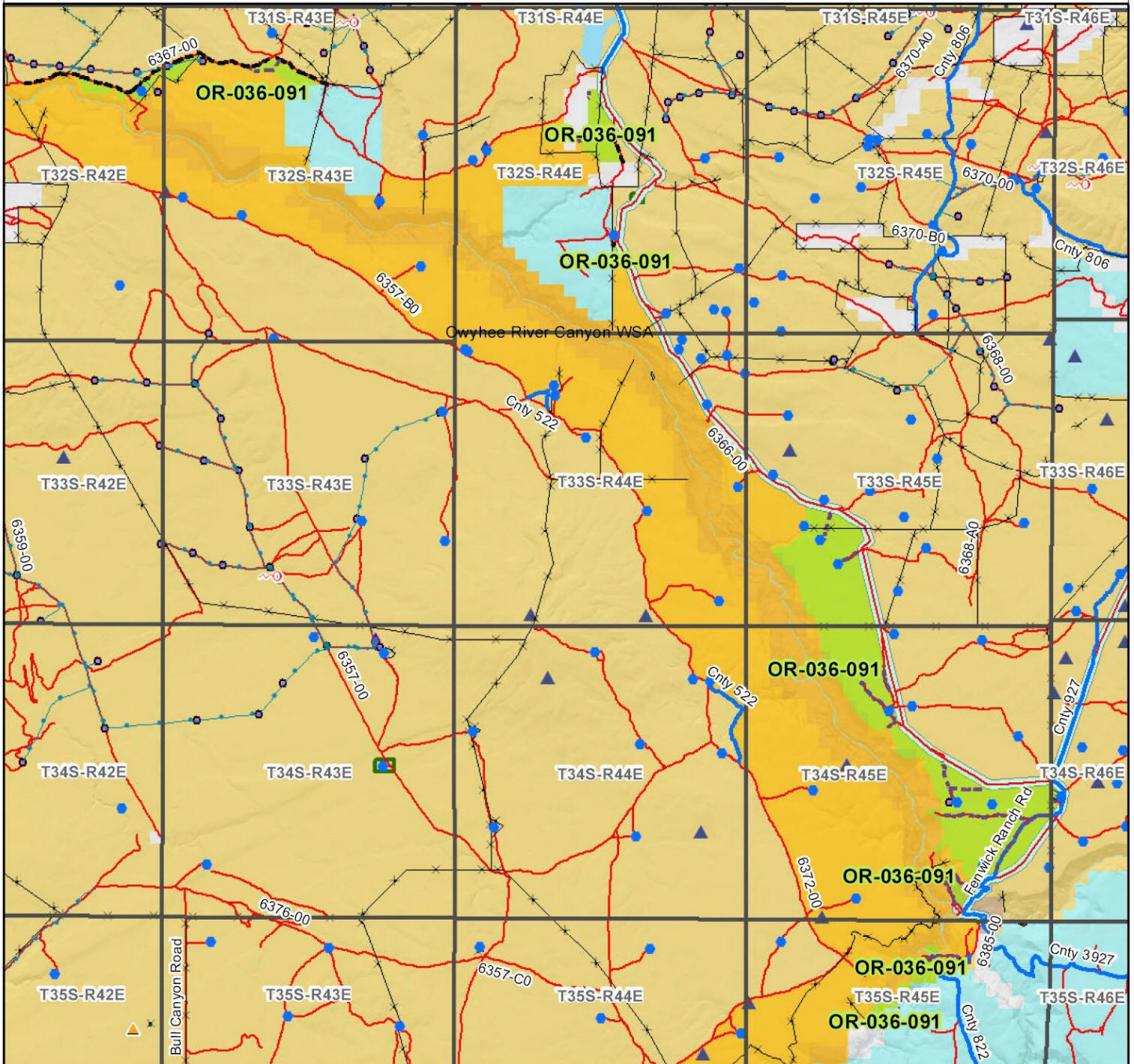
Prepared By: Renee Straub 9/11/18  
 Renee Straub, Assistant Field Manager, Vale Date

Approved By: [Signature] 9/11/18  
 Thomas Patrick (Pat) Ryan Date  
 Field Manager, Malheur FO

*This form documents information that constitutes an inventory finding on wilderness characteristics. It does not represent a formal land use allocation or a final agency decision subject to administrative remedies under either 43 CFR parts 4 or 1610.5-2.*

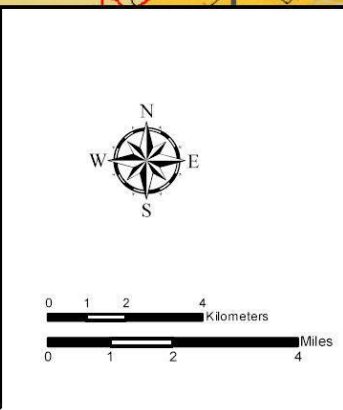
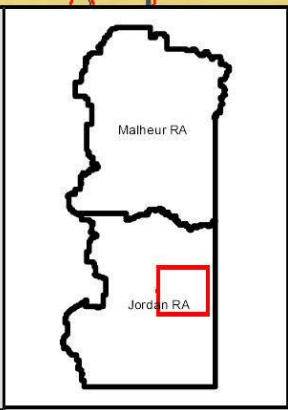
# Wilderness Characteristics - Overview

## Owyhee River Contiguous - OR-036-091 - Map 1A of 2



**Legend**

<ul style="list-style-type: none"> <li> Developed Spring</li> <li> Wildlife Guzzler</li> <li> Earthen Reservoir</li> <li> Pipeline</li> <li> Trough</li> <li> Fence</li> <li> Storage Tank</li> <li> Surface Mining Disturbance</li> <li> Sage Grouse Lek</li> <li> Special Status Plant</li> <li> BLM Wild Char Inventory Unit</li> <li> Wilderness Study Area</li> <li> Mineral Material Site</li> <li> Road/Utility Right-of-Way</li> <li> Major Water Body</li> </ul>	<p><b>Route Types - BLM Determination</b></p> <ul style="list-style-type: none"> <li> Boundary Road</li> <li> Motorized Primitive Trail (MPT)</li> <li> Discontinued Use</li> <li> Routes - Outside Wild Char Unit</li> <li> Major Highway</li> <li> BLM Numbered &amp; Other Routes</li> </ul> <p><b>Land Ownership</b></p> <ul style="list-style-type: none"> <li> Bureau of Land Management</li> <li> State</li> <li> Private</li> <li> Other Federal Land</li> </ul>
---	--



U.S. DEPARTMENT OF THE INTERIOR  
BUREAU OF LAND MANAGEMENT

**VALE DISTRICT**  
October 20, 2011

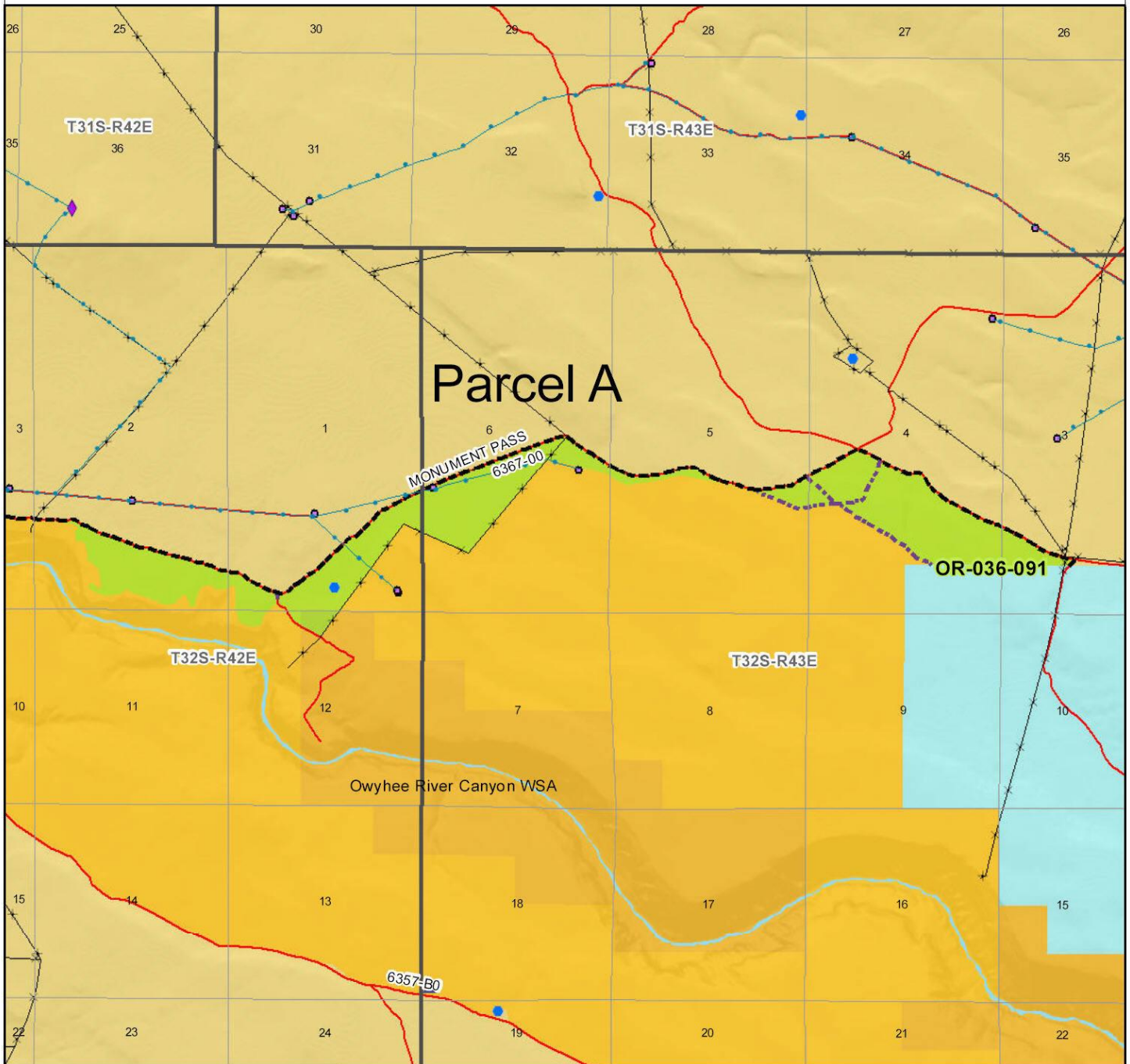
No warranty is made by the Bureau of Land Management as to the accuracy, reliability, or completeness of these data for individual or aggregate use with other data. Original data were compiled from various sources. This information may not meet National Map Accuracy Standards. This product was developed through digital means and may be updated without notification.

--FINAL--

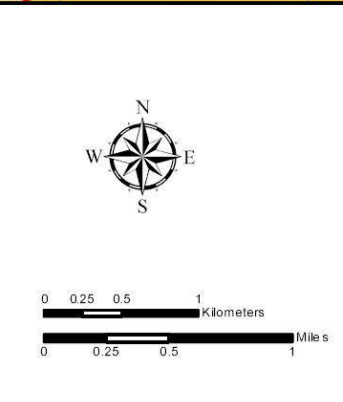
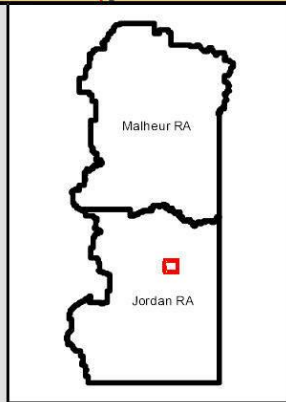


# Wilderness Characteristics - Overview

## Owyhee River Contiguous - OR-036-091 - Map 1B of 2



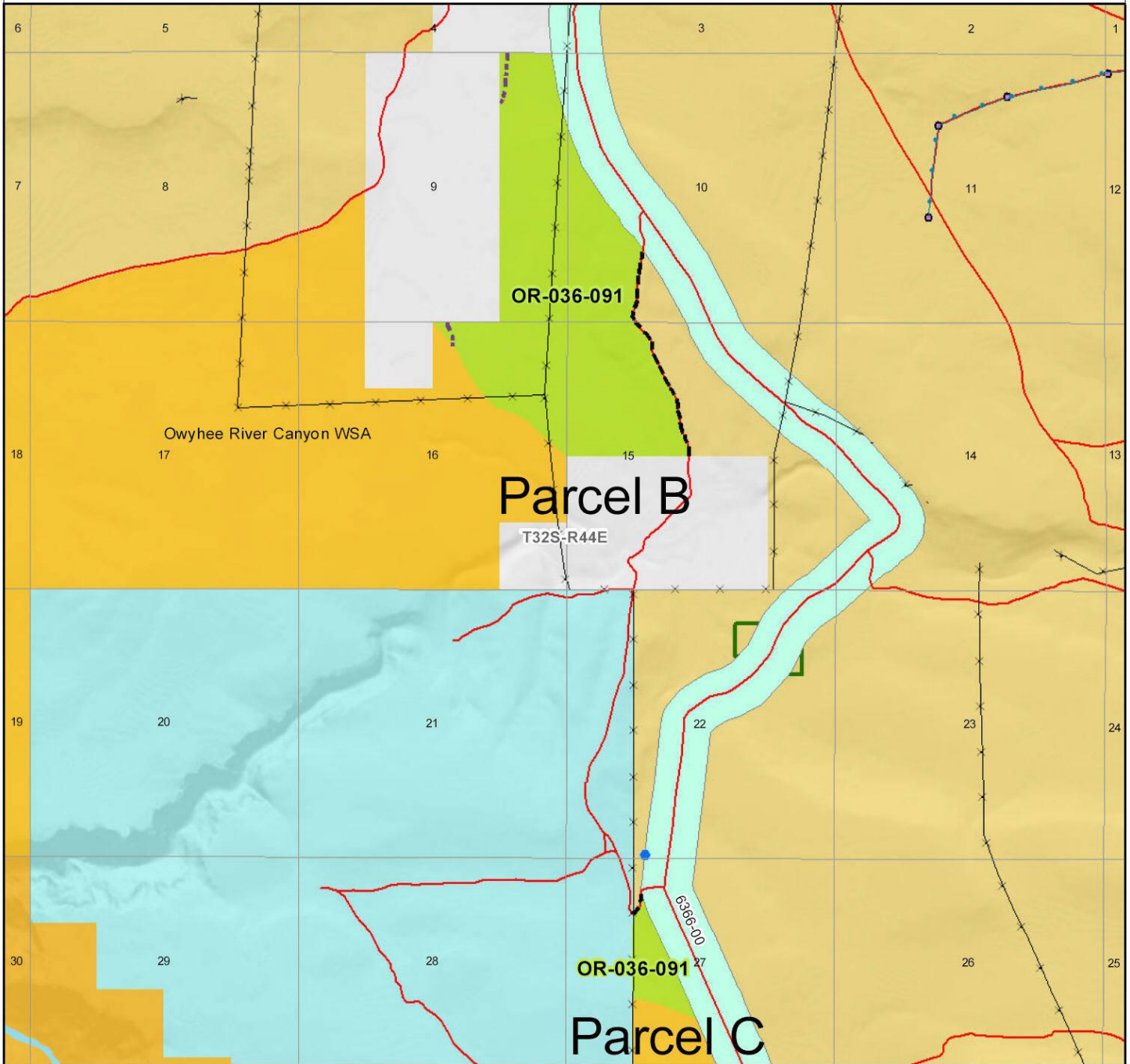
Legend	
Developed Spring	Route Types - BLM Determination
Wildlife Guzzler	Boundary Road
Earthen Reservoir	Motorized Primitive Trail (MPT)
Pipeline	Discontinued Use
Trough	<b>Routes - Outside Wild Char Unit</b>
Fence	County
Storage Tank	Major Highway
Surface Mining Disturbance	BLM Numbered & Other Routes
Sage Grouse Lek	<b>Land Ownership</b>
Special Status Plant	Bureau of Land Management
BLM Wild Char Inventory Unit	State
Wilderness Study Area	Private
Mineral Material Site	Other Federal Land
Road/Utility Right-of-Way	
Major Water Body	



**U.S. DEPARTMENT OF THE INTERIOR**  
 BUREAU OF LAND MANAGEMENT  
  
**VALE DISTRICT**  
 October 20, 2011  
No warranty is made by the Bureau of Land Management as to the accuracy, reliability, or completeness of these data for individual or aggregate use with other data. Original data were compiled from various sources. This information may not meet National Map Accuracy Standards. This product was developed through digital means and may be updated without notification.  
**--FINAL--**

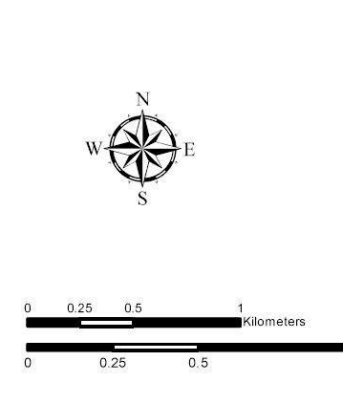
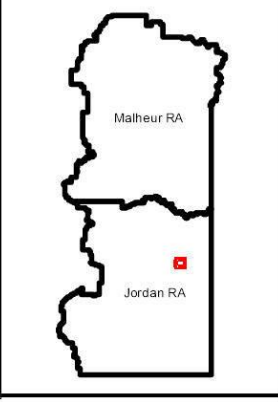
# Wilderness Characteristics - Overview

## Owyhee River Contiguous - OR-036-091 - Map 1C of 2



**Legend**

<ul style="list-style-type: none"> <li> Developed Spring</li> <li> Wildlife Guzzler</li> <li> Earthen Reservoir</li> <li> Pipeline</li> <li> Trough</li> <li> Fence</li> <li> Storage Tank</li> <li> Surface Mining Disturbance</li> <li> Sage Grouse Lek</li> <li> Special Status Plant</li> <li> BLM Wild Char Inventory Unit</li> <li> Wilderness Study Area</li> <li> Mineral Material Site</li> <li> Road/Utility Right-of-Way</li> <li> Major Water Body</li> </ul>	<p><b>Route Types - BLM Determination</b></p> <ul style="list-style-type: none"> <li> Boundary Road</li> <li> Motorized Primitive Trail (MPT)</li> <li> Discontinued Use</li> </ul> <p><b>Routes - Outside Wild Char Unit</b></p> <ul style="list-style-type: none"> <li> County</li> <li> Major Highway</li> <li> BLM Numbered &amp; Other Routes</li> </ul> <p><b>Land Ownership</b></p> <ul style="list-style-type: none"> <li> Bureau of Land Management</li> <li> State</li> <li> Private</li> <li> Other Federal Land</li> </ul>
---	--



U.S. DEPARTMENT OF THE INTERIOR  
BUREAU OF LAND MANAGEMENT

**VALE DISTRICT**  
October 20, 2011

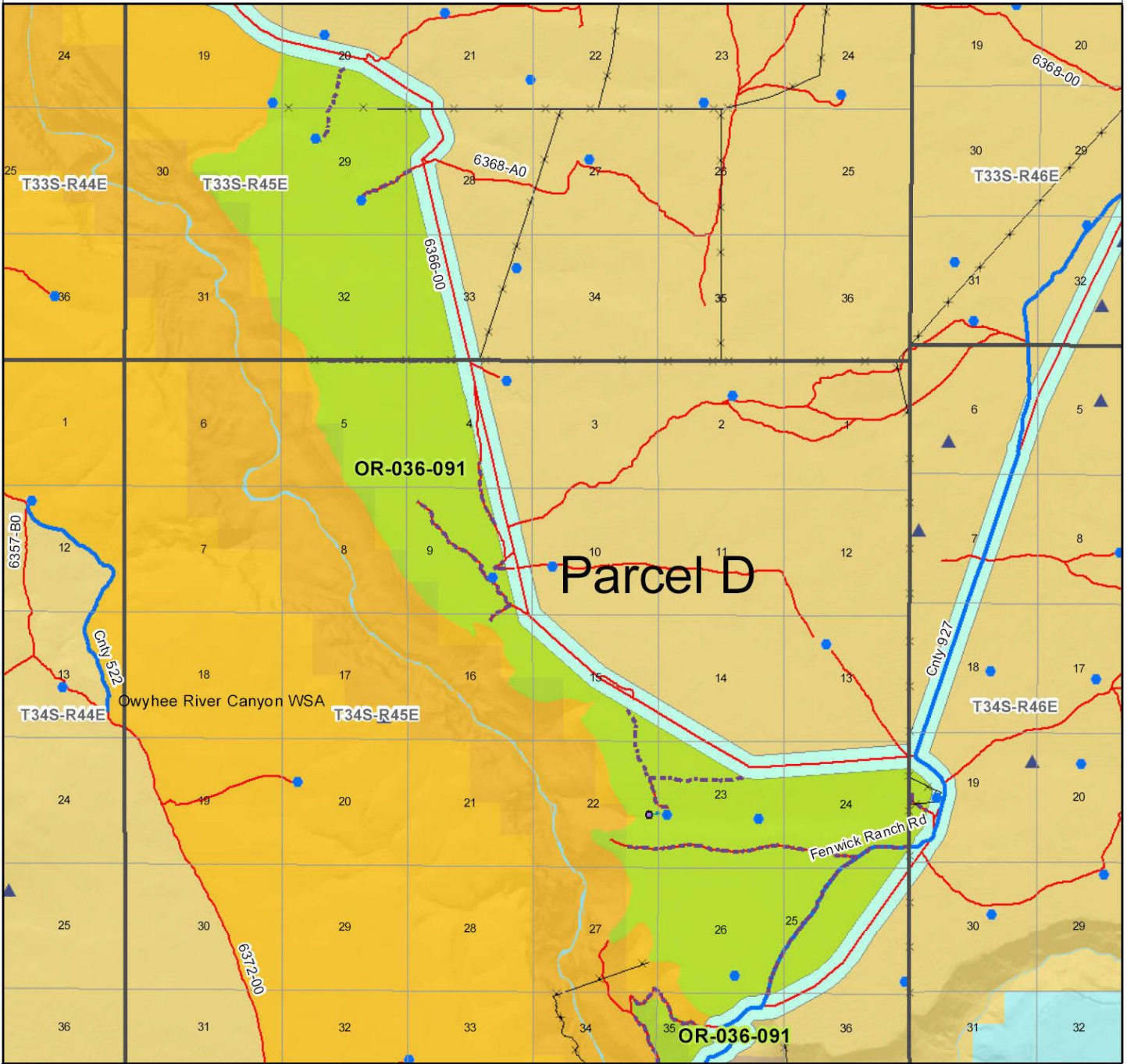
No warranty is made by the Bureau of Land Management as to the accuracy, reliability, or completeness of these data for individual or aggregate use with other data. Original data were compiled from various sources. This information may not meet National Map Accuracy Standards. This product was developed through digital means and may be updated without notification.

**--FINAL--**



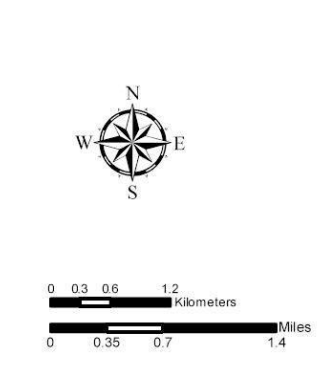
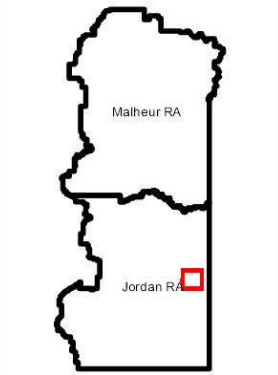
# Wilderness Characteristics - Overview

## Owyhee River Contiguous - OR-036-091 - Map 1D of 2



**Legend**

- |   |  |
|---|--|
| <ul style="list-style-type: none"> <li> Developed Spring</li> <li> Wildlife Guzzler</li> <li> Earthen Reservoir</li> <li> Pipeline</li> <li> Trough</li> <li> Fence</li> <li> Storage Tank</li> <li> Surface Mining Disturbance</li> <li> Sage Grouse Lek</li> <li> Special Status Plant</li> <li> BLM Wild Char Inventory Unit</li> <li> Wilderness Study Area</li> <li> Mineral Material Site</li> <li> Road/Utility Right-of-Way</li> <li> Major Water Body</li> </ul> | <p><b>Route Types - BLM Determination</b></p> <ul style="list-style-type: none"> <li> Boundary Road</li> <li> Motorized Primitive Trail (MPT)</li> <li> Discontinued Use</li> </ul> <p><b>Routes - Outside Wild Char Unit</b></p> <ul style="list-style-type: none"> <li> County</li> <li> Major Highway</li> <li> BLM Numbered &amp; Other Routes</li> </ul> <p><b>Land Ownership</b></p> <ul style="list-style-type: none"> <li> Bureau of Land Management</li> <li> State</li> <li> Private</li> <li> Other Federal Land</li> </ul> |
|---|--|



U.S. DEPARTMENT OF THE INTERIOR  
BUREAU OF LAND MANAGEMENT

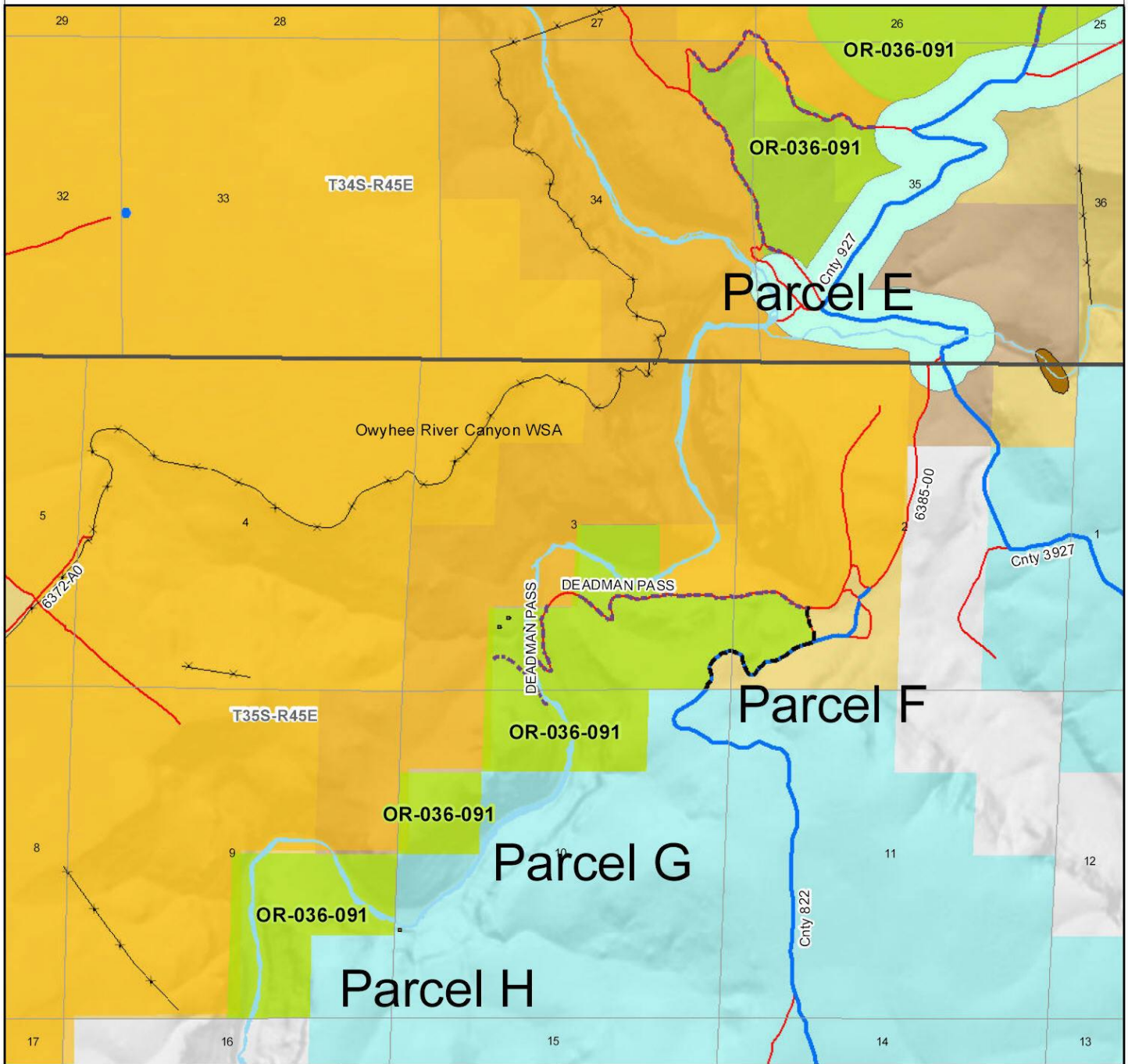
**VALE DISTRICT**  
October 20, 2011

No warranty is made by the Bureau of Land Management as to the accuracy, reliability, or completeness of these data for individual or aggregate use with other data. Original data were compiled from various sources. This information may not meet National Map Accuracy Standards. This product was developed through digital means and may be updated without notification.

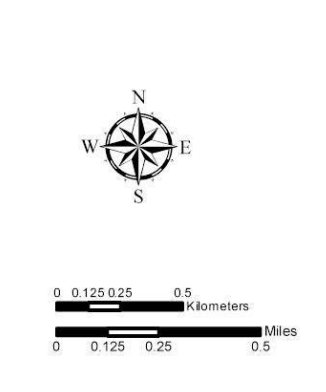
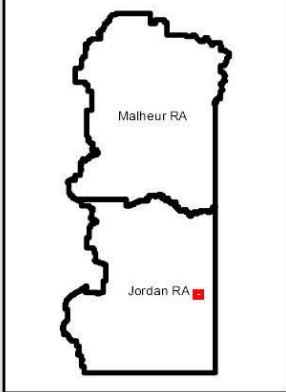
--FINAL--

# Wilderness Characteristics - Overview

## Owyhee River Contiguous - OR-036-091 - Map 1E of 2



Legend	
	Developed Spring
	Wildlife Guzzler
	Earthen Reservoir
	Pipeline
	Trough
	Fence
	Storage Tank
	Surface Mining Disturbance
	Sage Grouse Lek
	Special Status Plant
	BLM Wild Char Inventory Unit
	Wilderness Study Area
	Mineral Material Site
	Road/Utility Right-of-Way
	Major Water Body
<b>Route Types - BLM Determination</b>	
	Boundary Road
	Motorized Primitive Trail (MPT)
	Discontinued Use
<b>Routes - Outside Wild Char Unit</b>	
	County
	Major Highway
	BLM Numbered & Other Routes
<b>Land Ownership</b>	
	Bureau of Land Management
	State
	Private
	Other Federal Land



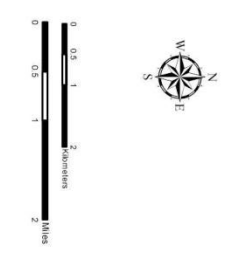
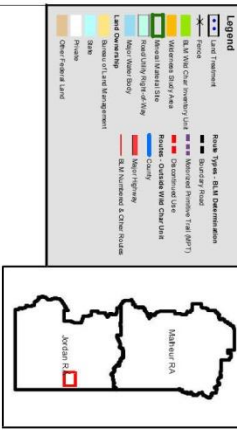
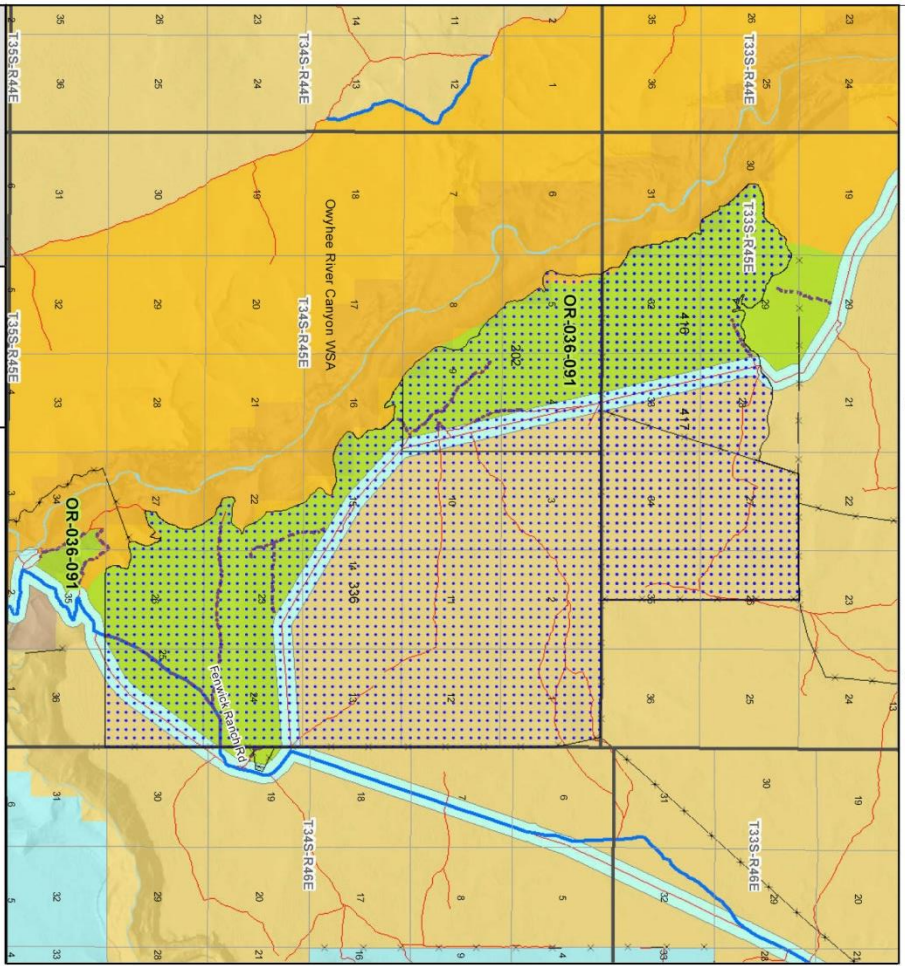
**U.S. DEPARTMENT OF THE INTERIOR**  
 BUREAU OF LAND MANAGEMENT  
  
**VALE DISTRICT**  
 October 20, 2011  
No warranty is made by the Bureau of Land Management as to the accuracy, reliability, or completeness of these data for individual or aggregate use with other data. Original data were compiled from various sources. This information may not meet National Map Accuracy Standards. This product was developed through digital means and may be updated without notification.  
**--FINAL--**







**Wilderness Characteristics - Land Treatments**  
**Owyhee River Contiguous - OR-036-091 - Map 2B of 2**



U.S. DEPARTMENT OF THE INTERIOR  
 Bureau of Land Management  
 VAIL DISTRICT  
 October 20, 2011  
 -FINAL-

**Wilderness Characteristics - Land Treatments**  
**Owyhee River Contiguous - OR-036-091 - Map 2B of 2**

OBJECTID *	PROJ. NAME	PROJ. TYPE	SEED GROUP	DATE COMPLETED
202	WHITEHORSE BRUSH SPRAY	Chemical Treatment	Not Applicable	1960
336	WHITEHORSE B.C.	Chemical Treatment	Not Applicable	1961
416	INDIAN CANYON SDG	Chemical Treatment	Not Applicable	1963
417	INDIAN CANYON SDG	Drill Seeding	A mix of non-native grasses	1963

Note: The Land Treatments represented by navy blue dots on the map to the left are labeled with the treatments' ObjectIDs listed in the first field of the Land Treatments table shown above. Multiple types of treatments may have been applied to the same area. For example, one treatment area may have been plowed and drill seeded - a record is shown in the table for each type of treatment.