

Wilderness Inventory Unit Index of Documents
2018 Revised - Twin Butte OR-036-002*, 16 total pages

Page 1: Index Cover Sheet

[Page 2: Form 1 – Documentation of BLM Wilderness Inventory: Findings on Record](#)

[Page 5: Form 2 – Documentation of Current Wilderness Inventory Conditions](#)

[Page 10: Form 2 – Summary of Findings and Conclusion](#)

[Page 12: Wilderness Characteristics Overview – Twin Butte OR-036-002 Map 1 of 1](#)

[Page 13: Wilderness Characteristics–BLM Photo Points–Twin Butte OR-036-002 Map & Log](#)

[Page 14: OR-036-002 Twin Butte BLM Photos](#)

*The inventory of this unit was updated in 2010. However, due to a State Office sponsored wilderness consistency evaluation and subsequent guidance, the 2010 inventory analysis and findings are being replaced by this current, 2018 inventory review. Documentation of the 2010 inventory can be found in the wilderness inventory project record. No changes were made to the road analysis for BLM Road River Spur 6354-0-A0, BLM Motorized Primitive Trail 8300-6-06, and the boundary road between BLM Twin Butte OR-036-002 and Cairn C OR-036-003. See the 2010 documentation.

Prepared by:
U.S. Department of the Interior
Bureau of Land Management
Vale District Office
100 Oregon Street
Vale, Oregon 97918



H-6300-1-WILDERNESS INVENTORY MAINTENANCE IN BLM OREGON/WASHINGTON

APPENDIX B – INVENTORY AREA EVALUATION

Evaluation of Current Conditions:

- 1) Document and review the existing BLM wilderness inventory findings on file, if available, regarding the presence or absence of individual wilderness characteristics, using Form 1, below.
- 2) Consider relevant information regarding current conditions available in the office to identify and describe any changes to the existing information (use interdisciplinary (ID) team knowledge, aerial photographs, field observations, maps, etc.), and document your findings on Form 2, below.

When Citizen Information has been submitted regarding wilderness characteristics, document the submitted materials including: date of Submission; Name of District(s) and Field Office(s) Affected; Type of material Submitted (e.g. narrative, map, photo). Evaluate any submitted citizen information regarding the validity of proposed boundaries of the unit(s), the existence of roads and other boundary features, the size of the unit(s), and the presence or absence of wilderness characteristics based on relevant information available in the office (prior BLM inventories, ID team knowledge, aerial photographs, field observations, maps, etc.)

Conduct field reviews as necessary to verify information and to ascertain current conditions. Reach conclusions on current conditions including boundaries, size of areas and presence or absence of wilderness characteristics. Fully explain the basis for each conclusion on form 2, including any critical differences between BLM and citizen information.

Document your findings regarding current conditions for each inventoried area. Describe how the present conditions are similar to, or have changed from, the conditions documented in the original wilderness inventory. Document your findings on Form 2 for each inventory area. Cite to or attach data considered, including photographs, maps, GIS layers, field trip notes, project files, *etc.*

**H-6300-1-WILDERNESS INVENTORY MAINTENANCE
IN BLM OREGON/WASHINGTON**

APPENDIX B – INVENTORY AREA EVALUATION

Year: 2018 Inventory Unit Name/Number: Twin Butte OR-036-002

FORM 1

DOCUMENTATION OF BLM WILDERNESS INVENTORY FINDINGS ON RECORD:

Is there existing BLM wilderness inventory information on all or part of this area?

Yes No

A.) Inventory Source(s)

(X) Denotes all applicable BLM inventory files, printed maps, or published BLM Decision documents with information pertaining to this unit.

Wilderness Inventories

- (X) 1978 - *BLM Wilderness Inventory Units OR-03-14-02 and OR-03-14-04* (unpublished BLM documents stored in 6-way case files).
- (X) April 1979 - *Proposed Initial Inventory – Roadless Areas and Islands Which Do Not Have Wilderness Characteristics* (yellow book).

Wilderness Decision Documents

- (X) August 1979 - *Wilderness Review – Initial Inventory: Final Decision on Public Lands Obviously Lacking Wilderness Characteristics, Oregon and Washington* (green book) Star Valley 3-188 and Twin Butte 3-190.
- () October 1979 - *Wilderness Review – Intensive Inventory: Oregon, Proposed Decision on the Intensive Wilderness Inventory of Selected Areas* (grey book).
- (X) March 1980 - *Wilderness Review – Intensive Inventory: Final Decisions on 30 Selected Units in Southeast Oregon and Proposed Decisions on Other Intensively Inventoried Units in Oregon and Washington* (orange book) Star Valley 3-188.
- () November 1980 - *Wilderness Inventory – Oregon and Washington, Final Intensive Inventory Decisions* (brown book).
- () November 1981 - *Stateline Intensive Wilderness Inventory Final Decision, Oregon, Idaho, Nevada, Utah* (tan pamphlet).

B.) Inventory Unit Name(s)/Number(s)

- BLM unpublished file OR-03-14-02 and OR-03-14-04 (1978); Star Valley 3-188 and Twin Butte 3-190 (August 1979 – *Wilderness Review – Initial Inventory: Final Decision on Public Lands Obviously Lacking Wilderness Characteristics, Oregon and Washington* (green book).

C.) Map Name(s)/Number(s)

- **(X)** Final Decision – Initial Wilderness Inventory Map August 1979 (Star Valley 3-188 and Twin Butte 3-190)
- **()** Proposed Decision Intensive Wilderness Inventory of Selected Areas Map October 1979
- **(X)** Intensive Wilderness Inventory Map March 1980 (Star Valley 3-188)
- **()** Intensive Wilderness Inventory, Final Decisions Map November 1980
- **()** November 1981 *Stateline Intensive Wilderness Inventory Final Decision, Oregon, Idaho, Nevada, Utah* (tan pamphlet)

D.) BLM District(s)/Field Office(s)

- Vale District/Malheur Field Office (formerly Jordan Resource Area)

2) BLM Inventory Findings on Record:

Unit#/Name	Size (acres)	Natural Condition	Outstanding Solitude	Outstanding Primitive & Unconfined Recreation	Supplemental Values
Twin Butte 3-190	7,098	Y	N	N	N
Portion not included in from OR-03-14-04 (Twin Butte)	1,303	Y	N	N	N
Star Valley 3-188	9,765	Y	N	N	N
Portion not included in OR-03-14-02 (Star Valley)	560	Y	N	N	N
Total acres>>	18,726				

The inventory of this unit was updated in 2010. However, due to a State Office sponsored wilderness consistency evaluation and subsequent guidance, the 2010 inventory analysis and findings are being replaced by this current, 2018 inventory review. Documentation of the 2010 inventory can be found in the wilderness inventory project record.

H-6300-1-WILDERNESS INVENTORY MAINTENANCE IN BLM OREGON/WASHINGTON

APPENDIX B – INVENTORY AREA EVALUATION

Evaluation of Current Conditions:

- 1) Document and review the existing BLM wilderness inventory findings on file, if available, regarding the presence or absence of individual wilderness characteristics, using Form 1, below.
- 2) Consider relevant information regarding current conditions available in the office to identify and describe any changes to the existing information (use interdisciplinary (ID) team knowledge, aerial photographs, field observations, maps, etc.), and document your findings on Form 2, below.

When Citizen Information has been submitted regarding wilderness characteristics, document the submitted materials including: date of Submission; Name of District(s) and Field Office(s) Affected; Type of material Submitted (e.g. narrative, map, photo). Evaluate any submitted citizen information regarding the validity of proposed boundaries of the unit(s), the existence of roads and other boundary features, the size of the unit(s), and the presence or absence of wilderness characteristics based on relevant information available in the office (prior BLM inventories, ID team knowledge, aerial photographs, field observations, maps, etc.)

Conduct field reviews as necessary to verify information and to ascertain current conditions. Reach conclusions on current conditions including boundaries, size of areas and presence or absence of wilderness characteristics. Fully explain the basis for each conclusion on form 2, including any critical differences between BLM and citizen information.

Document your findings regarding current conditions for each inventoried area. Describe how the present conditions are similar to, or have changed from, the conditions documented in the original wilderness inventory. Document your findings on Form 2 for each inventory area. Cite to or attach data considered, including photographs, maps, GIS layers, field trip notes, project files, *etc.*

FORM 2**DOCUMENTATION OF CURRENT WILDERNESS INVENTORY CONDITIONS:****Inventory Unit Name/Number: Twin Butte OR-036-002**

For this exercise BLM refers to the unit as 2007 Twin Butte OR-036-002. A citizen wilderness proposal provided by Oregon Natural Desert Association (ONDA) received February 2004 identified BLM unit OR-036-002 as a portion of their proposal known as the “Oregon Butte proposed WSA Addition.” ONDA feels that the citizen proposal presents new information that documents wilderness criteria and therefore qualifies the area for interim protection as a Wilderness Study Area. The Oregon Butte proposed WSA Addition also includes BLM unit OR-036-003 and BLM unit OR-036-005.

1) Is the unit of sufficient size?

Yes No

Unit OR-036-002 is comprised of 18,754 acres in Oregon, meeting the size criteria. BLM combined unit 3-188 (Star Valley) with unit 3-190 (Twin Butte) because of a route designation change between the units (refer to the attached Road 8300-6-06 analysis form)¹. BLM also added 1,303 additional acres from unit OR-03-14-04 (Twin Butte) and 560 additional acres from unit OR-03-14-02 (Star Valley) that were in the initial inventory but not included in The Twin Butte or Star Valley units because of original road designations and acreage. BLM determined that route 8300-6-06 separating original inventory units 3-188 and 3-190 did not meet the road definition and is now designated as a motorized primitive trail. The 18,754 total acres that comprise the OR-036-002 unit as shown in Form 2 differ slightly from the 18,726 total acres listed for this unit in Form 1. Acreage for unit OR-036-002 in Form 2 is calculated from BLM GIS information while the 18,726 acres in Form 1 was either not calculated properly or resulted from a rounding error from methods and maps used in the initial 1978 inventory.

Description:

The boundaries of this unit are identified as BLM road number 6350-0-00 on the north side and east side, BLM road 6354-0-00 on the south side, and BLM road 6354-0-A0 on the west side. Periodic maintenance of the 46.8 miles of boundary roads has occurred in the past (no confirmed dates available) and they are used regularly by ranchers (as observed by current BLM staff) and BLM employees for livestock management. Refer to map 2007_Twin_Butte_OR_036_002.pdf for the unit boundary. The citizen wilderness proposal boundaries for unit OR-036-002 differ from BLM’s by including areas that now consist of BLM new inventory units OR-036-003 and OR-036-005. ONDA combined the three BLM inventory units into their Oregon Butte proposed WSA Addition because they do not recognize the northern and western boundary roads of BLM unit Cairn C OR-036-003 as meeting the definition of a road. The northern boundary road of the Cairn C OR-036-003 unit is the southern boundary of the Twin Butte OR-036-002 unit. BLM does not agree with their road determination and has explained why the route between the two BLM units does meet the definition of a road, in the BLM road analysis form 6354-0-00.

¹ No changes were made to the road analysis for BLM Road River Spur 6354-0-A0, BLM Motorized Primitive Trail 8300-6-06, and the boundary road between BLM Twin Butte OR-036-002 and Cairn C OR-036-003. See the 2010 documentation.

BLM also disagrees (BLM Road 6354-0-A0 analysis form) with ONDA's determination that because BLM road 6354-0-A0 does not meet the definition of a road, the Twin Butte unit is contiguous with the Upper West Little Owyhee WSA.

2) Is the unit in a natural condition?

Yes X No ___

Description:

Human imprints within the unit include three earthen reservoirs, 1.6 miles of livestock fence, and a previously maintained landing strip. The airstrip included within this unit is not officially recognized by the Federal Aviation Administration (FAA). It was probably used for rangeland development purposes in the past. The newly defined unit also includes eight motorized primitive trails that total 19.95 miles in length. Of the 19.95 trail miles, 8.5 miles are in close proximity to each other, contributing to possible contact with other users while passing through the unit. The frequency of contact is projected to be low however, because of the sporadic use of some of the trails. The fenceline and remaining motorized primitive trails are to some extent unnoticeable because of the fairly flat rolling terrain and partial screening by sagebrush within the unit.

The unit exhibits a near-natural condition throughout because fencelines generally blend in with the waist-high big sagebrush and the motorized primitive trails are few widely scattered and are also partially affected by vegetative screening. Two of the three spring developments are substantially unnoticeable also because of both vegetation and terrain screening and their small size. Overall, the area appears to be primarily affected by the forces of nature with the imprint of human activity substantially unnoticeable. Refer to map 2007_Twin_Butte_OR_036_002A.pdf for human imprints.

3) Does the unit have outstanding opportunities for solitude?

Yes X No ___

Description:

Unit OR-036-002 is approximately 6 miles in length and 4 to 5 miles in width from its northern boundary to near the southern boundary where it becomes irregular in shape and about 6 miles wide. The majority of the unit consists of undulating hilltops and valleys. Twin Butte provides the most noticeable variation in topographic relief in the unit. The headwaters of Toppin Creek emanate from Twin Butte and flow to the north through the unit. Toppin Creek drainage within the unit travels through a broad shallow valley. Topographic relief is minimal within the unit with elevations ranging from about 5,630 mean sea level (msl) along the northeastern boundary and rising to the southwest to about 6,060 (msl) with the top of Twin Butte at 6,078 feet (msl). Elevation changes in most of the unit traversing from north to south or from east to west are gradual and average about 40-60 feet per mile. Although topographic and vegetative screening is minimal within the unit, what screening that does exist, when combined with size, configuration and lack of internal primitive routes, BLM Unit OR-036-002 does provide outstanding opportunities for solitude.

A citizen's wilderness proposal (ONDA, February 2004) includes unit OR-036-002 as a contiguous area with previously BLM-identified inventory units Deer Flat (BLM unit OR-036-005) and Cairn C (BLM unit OR-036-003) in their Oregon Butte proposed WSA Addition. BLM has concluded that the three units are not contiguous because they are separated by existing routes that meet the definition of a road (refer to BLM road 6354-0-00 and 8300-6-01 road analysis forms). Because of the Oregon Butte proposed WSA Addition's larger size, configuration,

proposed contiguous roadless areas, and a diversity of natural features, ONDA concludes that the area has outstanding opportunities for solitude.

4) Does the unit have outstanding opportunities for primitive and unconfined recreation?

Yes No

Description:

Opportunities for primitive and unconfined types of recreation are available in the unit. However, opportunities for activities such as hiking, backpacking, hunting, wildlife viewing, horseback riding, and photography are not outstanding because the unit lacks scenic quality, diversity of landforms, and challenging terrain. Twin Butte and drainage depressions are the only topographic features in the unit that alters the otherwise near flatness of the terrain. The present inventory agrees with the 1978 inventory that determined the unit lacks exceptional scenery and a diversity of landforms that would result in a strong attraction to the unit for any type of primitive recreation activity. Backpacking across the unit could be a monotonous experience with no change in hiking conditions or scenery. There are no unique photographic opportunities in the unit. Despite the unit's size, the lack of scenic quality and lack of diversity of landforms render the opportunities for primitive and unconfined recreation less than outstanding. Although wildlife viewing opportunities have been identified as a recreational value within this unit, they are not considered to be outstanding by the inventory team.

Citizens promoting the Oregon Butte proposed Addition have presented two scenic photographs (WA78, 121) as evidence of outstanding opportunity for hiking, photography, and sightseeing in the Twin Butte OR-036-002 unit. Photographs WA78 and WA121 are views taken from the northern and southern boundary roads respectively of BLM unit OR-036-002. Photograph WA78 is an excellent representation of the broad expanse of sagebrush cover throughout the unit that lacks diversity of topographic or vegetation screening within the unit. In the background of the picture and outside of the unit are the Santa Rosa Mountains located in Nevada. Photograph WA121 is a view north from the southern boundary road of the unit that also indicates the lack of topographic or vegetation diversity within the unit. By definition "An area may possess outstanding opportunities for a primitive and unconfined type of recreation either through the diversity in the number of primitive and unconfined recreational activities possible in the unit, or the outstanding quality of one opportunity." The inventory team has determined that unit OR-036-002 does not contain any outstanding opportunities or outstanding qualities for primitive and unconfined recreation because of the limited extent of diverse land forms.

5) Does the unit have supplemental values?

Yes No

Description:

With some minor exceptions, the ecological integrity of rangeland in this unit has been largely unaffected by the combined impacts of wildfire and invasive, non-native plants such as cheatgrass. This means the area possesses wildlife habitat supplemental values for sagebrush-dependent species of BLM management importance including pygmy rabbit, sagebrush vole, greater sage-grouse, Brewer's sparrow, black-throated sparrow, sage sparrow, loggerhead shrike, and sage thrasher. Observed rangeland conditions within this unit can be expected to contribute towards the existence of healthy sagebrush-dependent wildlife populations for a large area and over the long term because: (1) native plant functional and structural groups are well represented within the unit, and (2) wildlife forage, cover, and structure is available for use by species of management importance.

In contrast to conditions described above, rangeland at similar elevations and in similar ecological sites within Malheur County, Oregon has been highly disturbed due to the combined effects of improper historical grazing use, loss of biological crust integrity, invasive plant establishment, and catastrophic wildfire impacts over the last few decades. Cheatgrass presence is known to accelerate and aggravate wildfire spread because it is a highly flammable fine fuel, and wildfire often reduces or completely eliminates critical shrub-based forage, cover, and habitat structure values for many species of wildlife. Literally millions of acres of Wyoming big sagebrush habitat types similar to those within this unit, have been burned over the last few decades and recovery of these losses will take multiple decades if not centuries to occur.

Finally, the land considered within this unit is also recognized as part of the Owyhee Uplands Physiographic Province, a region incorporating rangeland in Oregon, Idaho, and Nevada which supports some of the largest contiguous blocks of intact sagebrush steppe remaining west of the Continental Divide.

SUMMARY OF FINDINGS AND CONCLUSION:

Inventory Unit Name/Number: Twin Butte OR-036-002

Summary

Results of Analysis:

- | | | |
|---|--------------|----|
| 1) Does the area meet any of the size requirements? | [Yes] | No |
| 2) Does the area appear to be natural? | [Yes] | No |
| 3) Does the area offer outstanding opportunities for solitude or a primitive and unconfined type of recreation? | [Yes] | NA |
| 4) Does the area have supplemental values? | [Yes] | No |

Conclusion

Check One:

- (X) The area or a portion of the area has wilderness character.
- () The area does not have wilderness character.

Sources of Reference for Evaluation:

- All BLM documents listed in Form 1; existing BLM wilderness inventory information.
- Wilderness Inventory Recommendations: Vale District, Submitted by Oregon Natural Desert Association (ONDA), February 6, 2004.
- Current geographic information system (GIS) data on existing projects, vehicle routes/roads, land ownership, etc.
- BLM Job Documentation Record (JDR) files.
- National Agriculture Imagery Project digital images (2005).
- Official BLM Transportation Plan Map.
- BLM staff has obtained first-hand field knowledge about this unit's plant communities, road conditions, and other attributes as a result of rangeland health investigations conducted between July and October of the year 2000. BLM gathered quantitative rangeland data from trend plots in support of the assessment and evaluation process for Louse Canyon Geographic Management Area, but most other data collected for rangeland health evaluation purposes were either estimated or qualitative in nature. BLM staff has also visited this and adjoining units annually and on multiple occasions after 2000 in the process of establishing and reading riparian monitoring locations, performing layout and design work for rangeland development projects, conducting rangeland supervision duties, collecting livestock utilization data, and documenting current road conditions. Field observations were made during Rangeland Standards and Guides assessment work in 2000. Additional field observations were made in June of 2017.

Wilderness Characteristics Interdisciplinary Team:

Prepared By: Kari Points 9/11/18
Kari Points, Outdoor Recreation Planner, Vale District Date

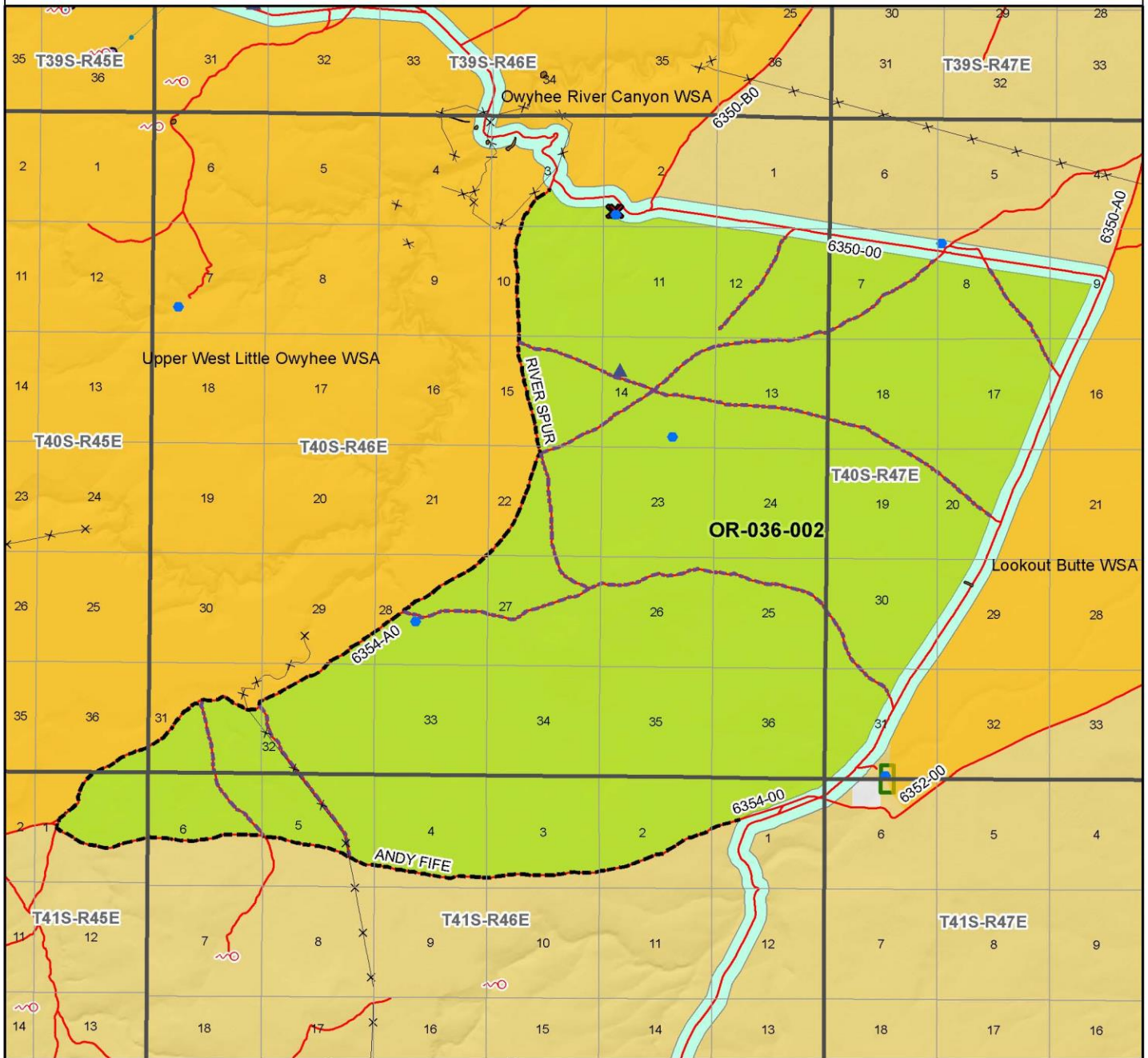
Reviewed By: Renee Straub 9/11/18
Renee Straub, Assistant Field Manager, Vale Date

Approved By: [Signature] 9/11/18
Thomas Patrick (Pat) Ryan Date
Field Manager, Malheur FO

This form documents information that constitutes an inventory finding on wilderness characteristics. It does not represent a formal land use allocation or a final agency decision subject to administrative remedies under either 43 CFR parts 4 or 1610.5-2.

Wilderness Characteristics - Overview

Twin Butte - OR-036-002 - Map 1 of 1



Legend

- Developed Spring
- Wildlife Guzzler
- Earthen Reservoir
- Pipeline
- Trough
- Fence
- Storage Tank
- Surface Mining Disturbance
- Sage Grouse Lek
- Special Status Plant
- BLM Wild Char Inventory Unit
- Wilderness Study Area
- Mineral Material Site
- Road/Utility Right-of-Way
- Major Water Body

Route Types - BLM Determination

- Boundary Road
- Motorized Primitive Trail (MPT)
- Discontinued Use

Routes - Outside Wild Char Unit

- County
- Major Highway
- BLM Numbered & Other Routes

Land Ownership

- Bureau of Land Management
- State
- Private
- Other Federal Land

U.S. DEPARTMENT OF THE INTERIOR
BUREAU OF LAND MANAGEMENT

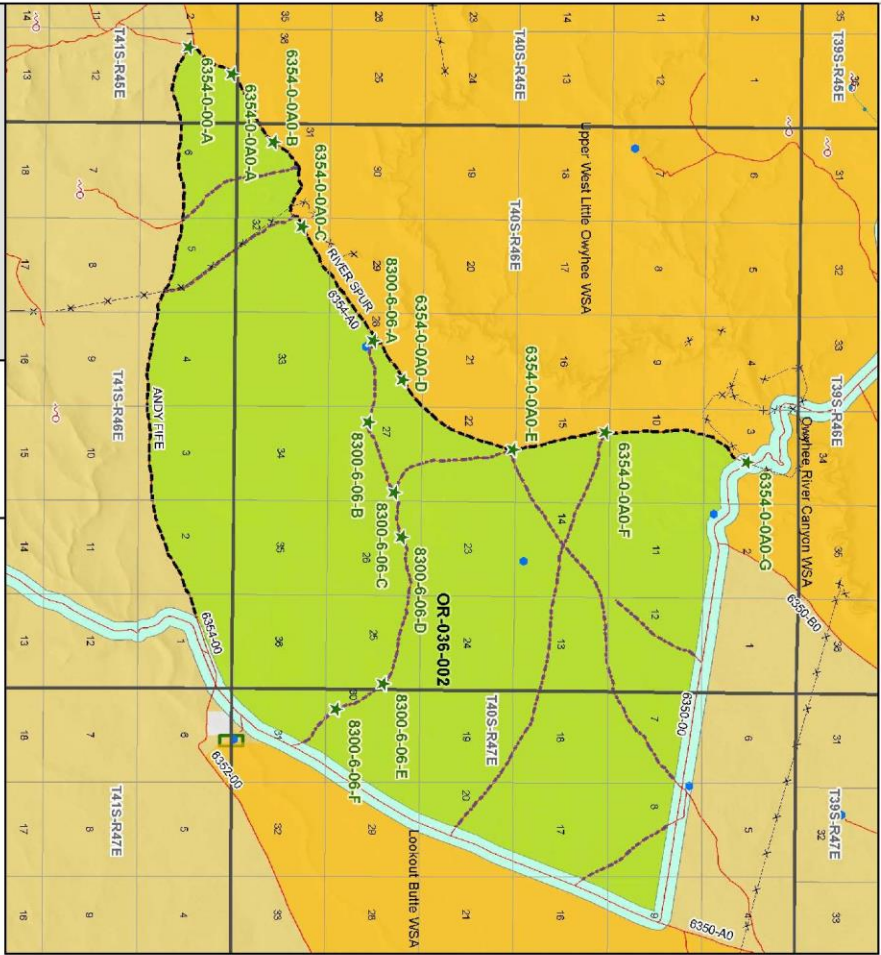
VALE DISTRICT
March 30, 2010

No warranty is made by the Bureau of Land Management as to the accuracy, reliability, or completeness of these data for individual or aggregate use with other data. Original data were compiled from various sources. This information may not meet National Map Accuracy Standards. This product was developed through digital means and may be updated without notification.

--FINAL--

Wilderness Characteristics - BLM Photo Points
Twin Butte - OR-036-002

Wilderness Characteristics - BLM Photo Points
Twin Butte - OR-036-002



Legend

- Developed Shading
- Visible Shading
- Location Identifier
- Project
- Natural Natural Site
- Scenic Quality
- Historic Landmark
- Historic Landmark
- Historic Landmark
- Historic Landmark
- Historic Landmark
- Historic Landmark
- Historic Landmark
- Historic Landmark

Scale
0 0.25 0.5 0.75 1.5 Miles

US DEPARTMENT OF THE INTERIOR
BUREAU OF LAND MANAGEMENT

VALE DISTRICT
March 2010

WILDNESS CHARACTERISTICS
BUREAU OF LAND MANAGEMENT
WILDERNESS CHARACTERISTICS
FINAL

PHOTO_LOCATION *	DIRECTION	PHOTO_TYPE	PHOTO_DATE	COMMENTS
8300-6-06-F	W	Route	20070425	Visible Tracks
8300-6-06-E	W	Route	20070425	Visible Tracks
8300-6-06-D	W	Route	20070425	Tracks
8300-6-06-C	W	Route	20070425	Tracks
8300-6-06-B	W	Route	20070425	Tracks
8300-6-06-A	W	Route	20070425	Tracks
8300-6-06-A	W	Project	20070425	OR-036-002-A-W1 Tw o Buttes Reservoir
8300-6-06-A	W	Route	20070425	Tracks Around Reservoir
6354-0-0A-A	W	Project	20070425	OR-036-002-A-W1 Tw o Buttes Reservoir
6354-0-0A-B	S	Route	20070723	Turning Into Deer Creek Onda Disputed
6354-0-0A-C	S	Route	20070723	Begin Road
6354-0-0A-D	S	Route	20070723	Visible Road
6354-0-0A-E	S	Scenery	20070723	OR-036-002-E-W Into W Little Owyhee WSA
6354-0-0A-F	S	Route	20070723	30-40 Mph
6354-0-0A-G	S	Route	20070723	Visible Road
6354-0-0A-H	S	Route	20070723	Visible Road
6354-0-0A-I	S	Route	20070723	Visible Road

Note: The BLM Wild Char PhotoPoints displayed on the map are labeled with their Photo Locations. The BLM Photo Log table shown above lists the photos taken at their respective Photo Locations. Multiple photos may be taken at each Photo Location. Scenery and Project Photo Type pictures have their photo names provided in the Comments field.



6354-0-00-A-S.JPG



6354-0-00-D-W.JPG



6354-0-00-G-W.JPG



6354-0-00-B-W.JPG



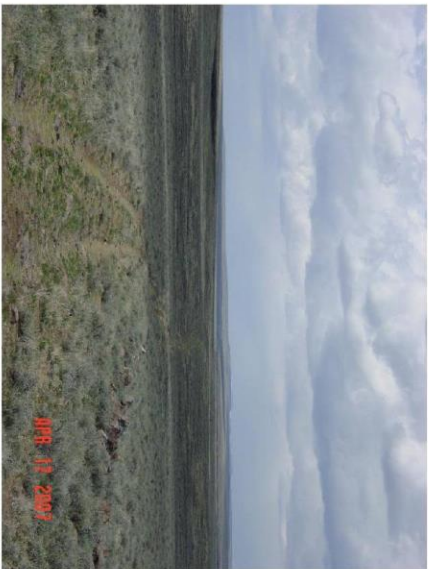
6354-0-00-E-N.JPG



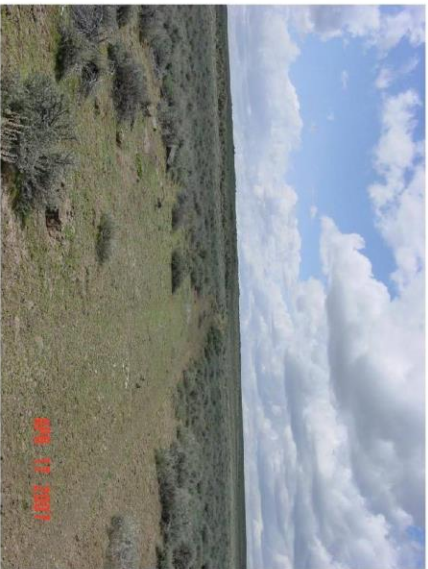
6354-0-00-H-W.JPG



6354-0-00-C-W.JPG



6354-0-00-F-NW.JPG



6354-0-00-I-W.JPG



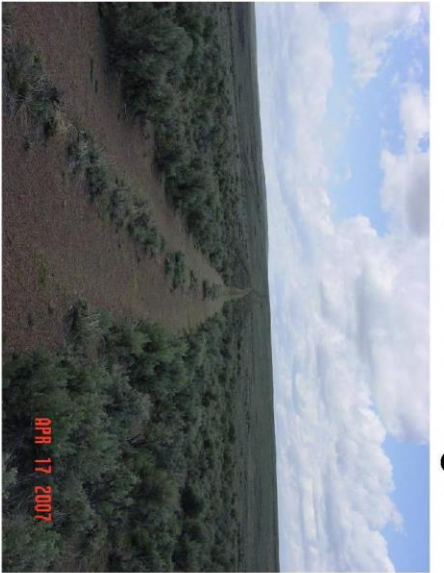
6354-0-00-J-W.JPG



6354-0-0A0-B-S.jpg



6354-0-0A0-F-S.jpg



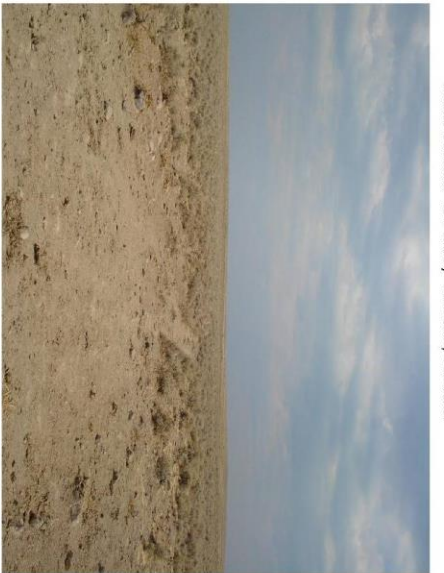
6354-0-00-K-W.JPG



6354-0-0A0-C-S.jpg



8300-6-06-A-W.JPG



6354-0-0A0-A-S.jpg



6354-0-0A0-D-S.jpg



8300-6-06-A-W1.JPG



8300-6-06-B-W.JPG



8300-6-06-E-W.JPG



OR-036-002-A-W1.JPG



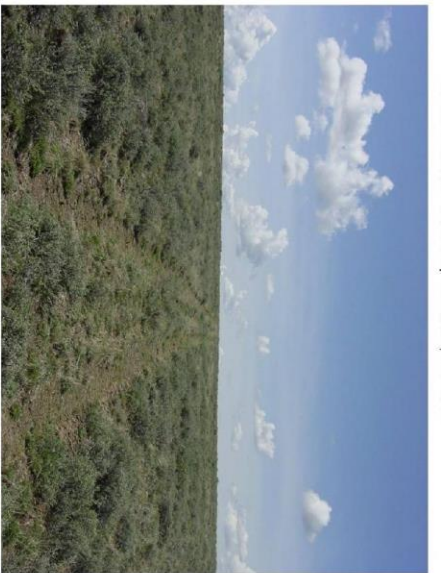
8300-6-06-C-W.JPG



8300-6-06-F-W.JPG



OR-036-002-E-W.jpg



8300-6-06-D-W.JPG



OR-036-002-A-W.JPG