

MEMO

September 19, 2018

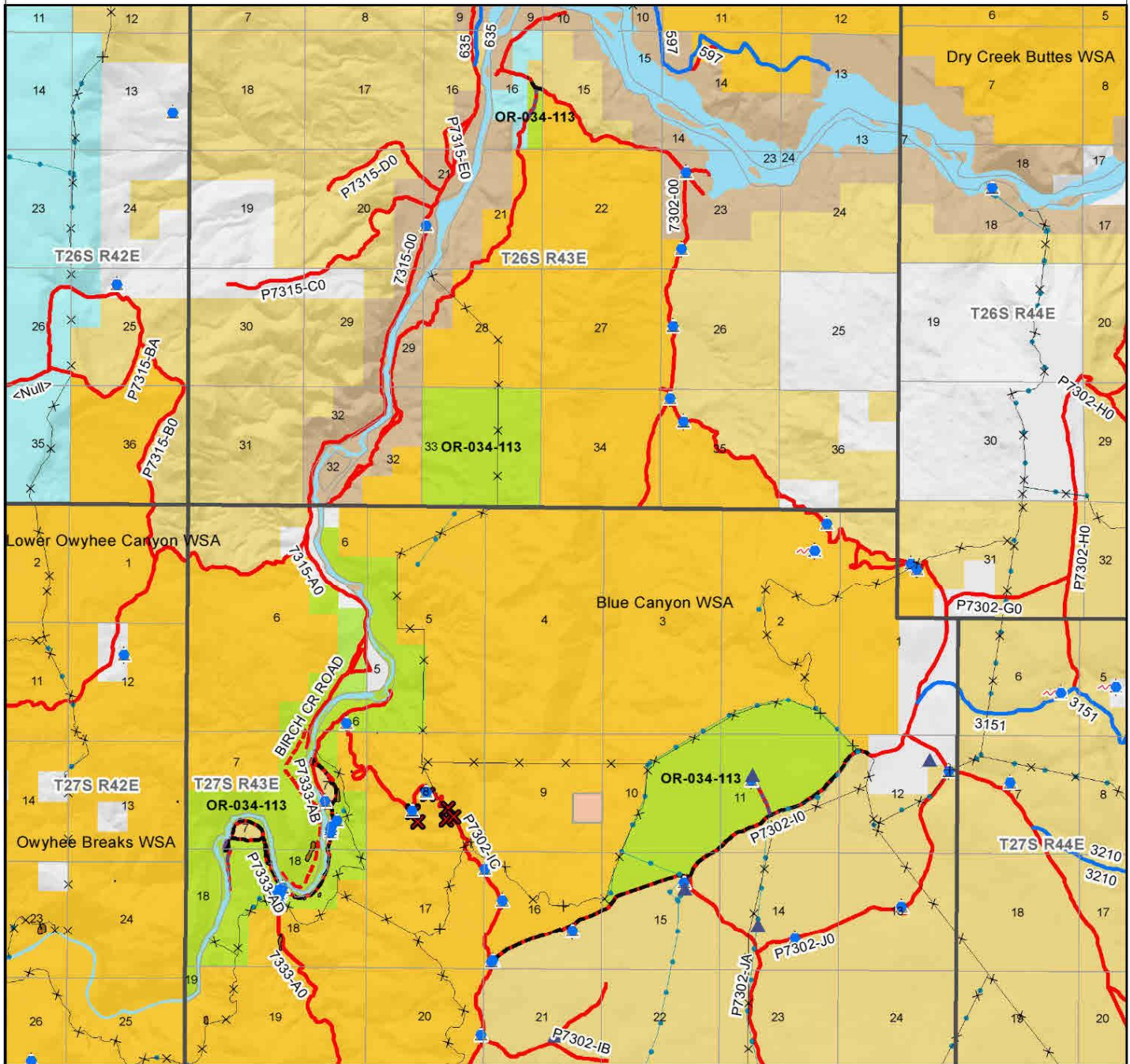
To: Thomas Patrick "Pat" Ryan, Field Manager, Malheur Field Office, Vale District
From: Kari Points Outdoor Recreation Planner, Malheur Field Office, Vale District
Subject: Blue Canyon Contiguous Wilderness Characteristics Inventory Unit (OR-034-113)

The memo serves as amended documentation regarding Vale District's wilderness characteristics inventory maintenance findings. This memo updates Blue Canyon Contiguous Wilderness Characteristics Inventory Unit inventory report to delete parcel C. This parcels was acquired BLM and is part of the existing Blue Canyon WSA and will be managed as previously addressed in the 2002 SEORMP ROD and consistent with BLM Manual 6330 until such time that they are designated or released by Congress.

SEORMP ROD - "Wilderness Study Areas - WSA's designated under authority of FLPMA sections 603 and 202, will be managed in accordance with the "Interim Management Policy for Land under Wilderness Review" (IMPLWR). Changes in WSA boundaries may be considered for inholdings and minor adjustments of adjacent land. This planning effort will not reopen the initial wilderness review mandated by section 603 of FLPMA, and it will not change existing decisions, signed by the Secretary of the Interior, to recommend areas as suitable for wilderness designation.) (2002 BLM, pg. 13)

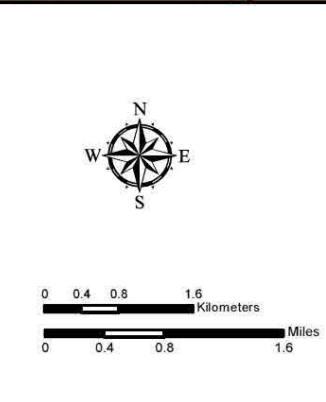
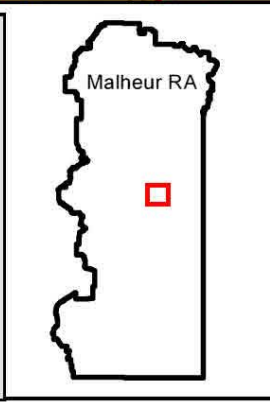
Wilderness Characteristics - Overview

Blue Canyon Contiguous - OR-034-113 - Map 1A



Legend

	Developed Spring		Route Types - BLM Determination
	Wildlife Guzzler		Motorized Primitive Trail (MPT)
	Earthen Reservoir		Discontinued Use
	Pipeline		Routes - Outside Wild Char Unit
	Trough		Major Highway
	Storage Tank		BLM Numbered & Other Routes
	Surface Mining Disturbance		Land Ownership
	Sage Grouse Lek		Bureau of Land Management
	Special Status Plant		State
	BLM Wild Char Inventory Unit		Private
	Wilderness Study Area		Other Federal Land
	Mineral Material Site		Non-WSA, BLM Rec. Wild. -1991
	Road/Utility Right-of-Way		
	Major Water Body		



U.S. DEPARTMENT OF THE INTERIOR
BUREAU OF LAND MANAGEMENT

VALE DISTRICT
September 5, 2018

No warranty is made by the Bureau of Land Management as to the accuracy, reliability, or completeness of these data for individual or aggregate use with other data. Original data were compiled from various sources. This information may not meet National Map Accuracy Standards. This product was developed through digital means and may be updated without notification.

--REVISED--FINAL--