



# United States Department of the Interior



## BUREAU OF LAND MANAGEMENT

Pocatello Field Office  
4350 Cliffs Drive  
Pocatello, Idaho 83204  
(208) 478-6340

In Reply Refer To:  
IDI02-TS-2020.0001

May 18, 2020

### **NORTH CANYON A TIMBER SALE** **NOTICE**

**NOTICE IS HEREBY GIVEN** that the Bureau of Land Management will offer for sale timber as described below for **sealed bid** pursuant to Instruction to Bidders, form number 5440-9 and subject to Notice of Requirement for Certification of Non-segregated Facilities, form number 1140-4.

Timber is sold "as is" with no warranty of fitness for any purpose. Any warranty as to quality or quantity is expressly disclaimed by the Government. The purchaser is liable for the total consideration of bid without regard to the amount bid per ton even though the quantity of timber actually cut or removed is more or less than the estimated volume so listed below.

**Sealed bids** will be received by the Pocatello Field Manager, or her representatives, in the Pocatello Field Office, 4350 Cliffs Drive, Pocatello, Idaho 83204, **prior to and opened and posted at 10:00 a. m. Mountain Time, on Thursday, June 11<sup>th</sup>, 2020**. Sealed bids received after this time will not be accepted.

No bid will be accepted for less than the total appraised price of **\$20,300.00** and without the required bid deposit indicated below:

ONEIDA COUNTY, IDAHO: PUBLIC LAND: **SEALED BIDS:**

Bid deposit required: **\$2,100**

All timber designated for cutting is on federal land shown on Exhibits A-1 and A-2 attached to the prospectus. The legal description of the sale is as follows:

North Canyon A Timber Sale				
T. 14 S., R. 34 E. Sections 15,22, & 23 Boise Meridian, Oneida County, Idaho				
Approximate No. Merchantable Trees	Estimated Contract <b>NET</b> Volume *(15% deducted from <b>GROSS</b> for defect)	Species	Appraised Value per unit	Appraised Value
BID ITEM 2,040 Trees	2,900 tons (450 MBF)	Douglas fir	\$7.00/ton (~\$45.11MBF)	\$20,300.00
Total	2,900 Tons			\$20,300.00

This sale will be sold by weight. Bidding will be on the tonnage only. Tons to MBF conversion was 6.5 tons/MBF. The above volumes and value are only an estimate. The actual amount of sawtimber will be determined by scaled weight. (See special provisions)

Only stems without paint (yellow) shall be removed. Yellow paint designates “leave” trees. No trees shall be cut outside the mapped and/or boundary area designated by the authorized officer. (Maps Enclosed) All timber for sale hereunder is restricted from export from the United States in the form of unprocessed timber.

### **Field Tour**

The BLM will conduct a project field tour on **Thursday, JUNE 4<sup>th</sup>, 2020**. Interested parties may meet Channing Swan, BLM Forester, at the **SOUTH side of KJ Quick Stop at 226 E 50 S, Malad, ID 83252 at 10:30 am**. If you have questions, please contact Channing Swan at 208-478-6389.

The timber sale contract area consists of approximately 52 acres within 2 units, as marked (leave trees are marked). The units consist of 52 acres and all harvest trees are Douglas-fir. Additional larger trees may be required to be removed from within aspen stands. Timber will be sold by scaled weight, per ton. The volume and appraised value are an estimate only for administrative purposes. The actual amount will be determined by scaled weight.

The sale consists of tractor and dozer ground units. Topography is variable.

No trees shall be cut outside the mapped and/or boundary area designated by the authorized officer (maps enclosed). All timber for sale hereunder is restricted from export from the United States in the form of unprocessed timber.

Cruise Information: The volume(s) listed above are an *estimate only* and were determined through establishing variable plots. Mean tree diameter is 17.0 inches DBH and mean height is 78 feet. Total volumes were calculated using the Caribou/Targhee National Forest volume tables for diameter and total tree heights.

The North Canyon A Timber Sale is located approximately 15 miles west of Malad, Idaho. See attached maps.

Duration of the contract will be **6 (six) months** for the cutting and removal of timber. The contract will contain special provisions regarding road maintenance, logging, environmental protection, slash disposal and log export.

Payment:

Payment for this sale may be made by: (1) payment in full at time of purchase; (2) payment bond (as per section 39, Form 5450-4); (3) in installments. If the installment method is chosen, there shall be no more than 10 installments, and each installment will be for the larger of \$10,000.00 or 10 % of the purchase price, rounded up to the next even \$100.00.

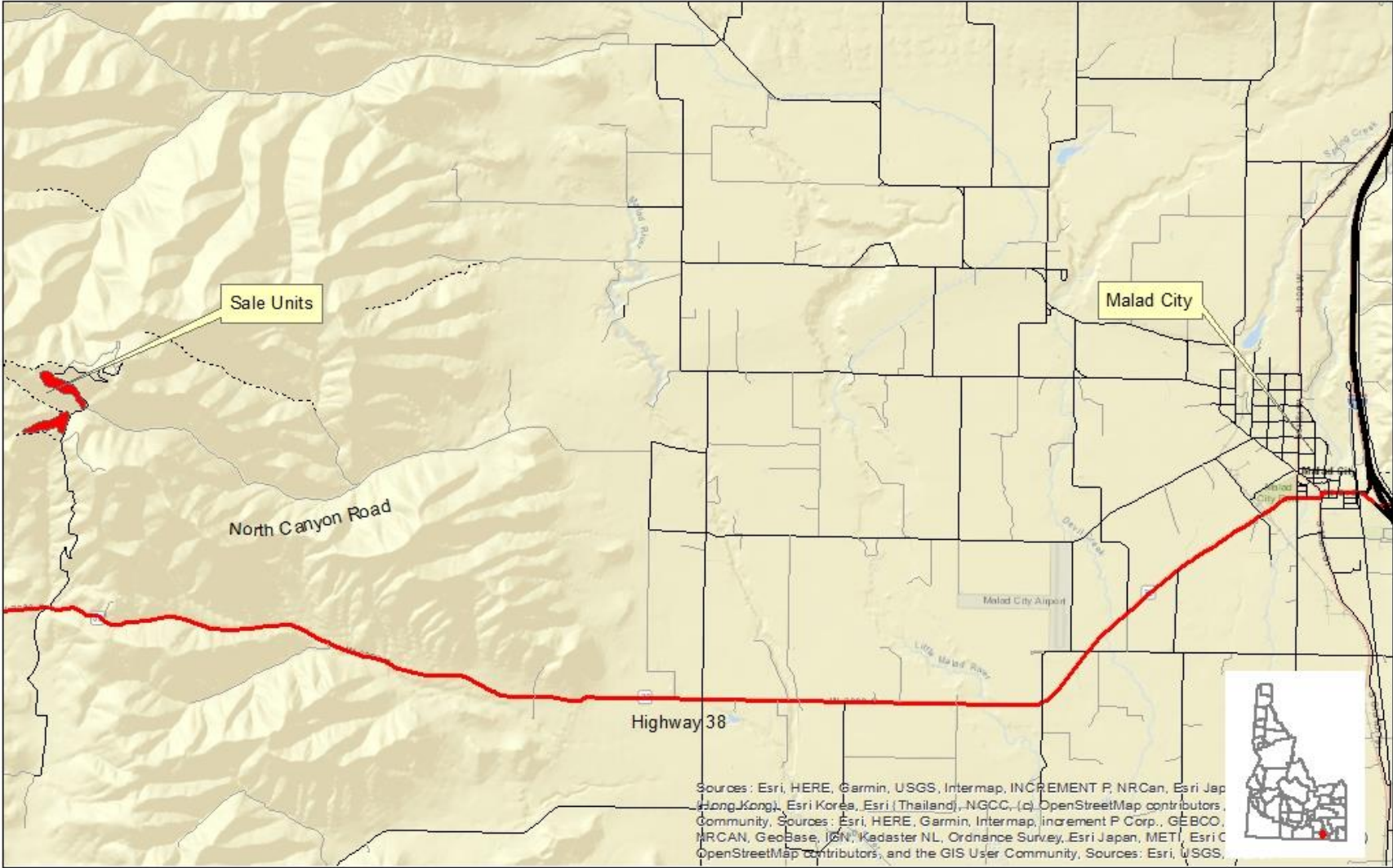
Bid Information

Detailed bid and contract information, including a copy of the Timber Sale Prospectus, may be obtained at the Bureau of Land Management, Pocatello Field Office, 4350 Cliffs Drive, Pocatello, ID 83204, OR call 208-478-6340.

Attachments:

- Exhibit A-1        - Location map
- Exhibit A-2        - Cutting Unit Map

# North Canyon Location Map



Sources: Esri, HERE, Garmin, USGS, Intermap, INCREMENT P, NRCan, Esri Japan (Tokyo), Esri Korea, Esri (Thailand), NGCC, (c) OpenStreetMap contributors, Community, Sources: Esri, HERE, Garmin, Intermap, increment P Corp., GEBCO, MRCAN, GeoBase, IGN, Kadaster NL, Ordnance Survey, Esri Japan, METI, Esri (OpenStreetMap contributors), and the GIS User Community, Sources: Esri, USGS,

**Legend**  
**North Canyon Sales**  
**Sale Units**

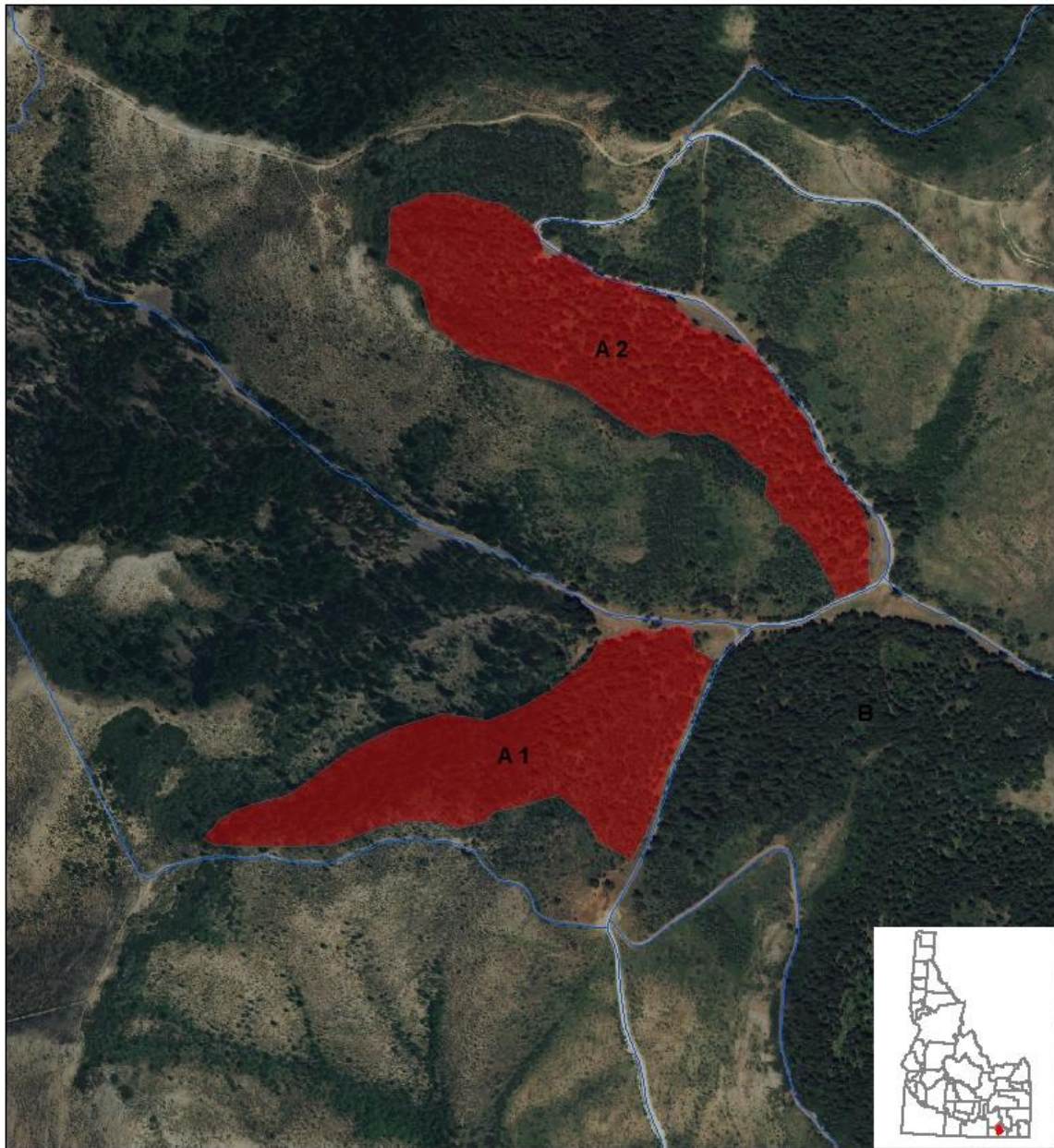
- A1
- A2



Produced: April 2020  
 Projection: UTM Zone 12 North NAD 1983  
 By: Channing Swan

No warranty is made by the Bureau of Land Management (BLM). The accuracy, reliability, or completeness of these data or individual use or aggregate use with other data is not guaranteed.

# North Canyon Timber Sales



## Legend

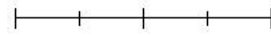
### North Canyon Sales

#### Sale Units

- A 1
- A 2

— Primitive Road: Open to All Vehicles

0 0.05 0.1 0.2 Miles



Produced: April 2020  
Projection: UTM Zone 12 North NAD 1983  
By: Channing Swan

No warranty is made by the Bureau of Land Management (BLM). The accuracy, reliability, or completeness of these data or individual use or aggregate use with other data is not guaranteed.