

Wilderness Inventory Unit Index of Documents
Noon OR-036-067, 11 total pages

Page 1: Index Cover Sheet

[Page 2: Form 1 – Documentation of BLM Wilderness Inventory: Findings on Record](#)

[Page 5: Form 2 – Documentation of Current Wilderness Inventory Conditions](#)

[Page 9: Form 2 – Summary of Findings and Conclusion](#)

[Page 10: Wilderness Characteristics Overview–Noon OR-036-067 Map 1 of 2](#)

[Page 11: Wilderness Characteristics-Land Treatments-Noon OR-036-067 Map 2 of 2](#)

Prepared by:
U.S. Department of the Interior
Bureau of Land Management
Vale District Office
100 Oregon Street
Vale, Oregon 97918



H-6300-1-WILDERNESS INVENTORY MAINTENANCE IN BLM OREGON/WASHINGTON

APPENDIX B – INVENTORY AREA EVALUATION

Evaluation of Current Conditions:

- 1) Document and review the existing BLM wilderness inventory findings on file, if available, regarding the presence or absence of individual wilderness characteristics, using Form 1, below.
- 2) Consider relevant information regarding current conditions available in the office to identify and describe any changes to the existing information (use interdisciplinary (ID) team knowledge, aerial photographs, field observations, maps, etc.), and document your findings on Form 2, below.

When Citizen Information has been submitted regarding wilderness characteristics, document the submitted materials including: date of Submission; Name of District(s) and Field Office(s) Affected; Type of material Submitted (e.g. narrative, map, photos). Evaluate any submitted citizen information regarding the validity of proposed boundaries of the unit(s), the existence of roads and other boundary features, the size of the unit(s), and the presence or absence of wilderness characteristics based on relevant information available in the office (prior BLM inventories, ID team knowledge, aerial photographs, field observations, maps, etc.)

Conduct field reviews as necessary to verify information and to ascertain current conditions. Reach conclusions on current conditions including boundaries, size of areas and presence or absence of wilderness characteristics. Fully explain the basis for each conclusion on form 2, including any critical differences between BLM and citizen information.

Document your findings regarding current conditions for each inventoried area. Describe how the present conditions are similar to, or have changed from, the conditions documented in the original wilderness inventory. Document your findings on Form 2 for each inventory area. Cite to or attach data considered, including photographs, maps, GIS layers, field trip notes, project files, *etc.*

Year: 2011 **Unit Number/Name:** OR-036-067--Noon

**FORM 1 -- DOCUMENTATION OF BLM WILDERNESS INVENTORY
FINDINGS ON RECORD**

1. Is there existing BLM wilderness inventory information on all or part of this area?

Yes No (If yes, and if more than one unit is within the area, list the names of those units.):

A.) Inventory Source(s) -- (X) Denotes all applicable BLM Inventory files, printed maps, or published BLM Decision documents with information pertaining to this unit.

Wilderness Inventories

- (X) 1978 – BLM Wilderness Inventory Units 3-140 of OR-03-10-28 Noon (unpublished BLM documents stored in Vale District case files)
- (X) April 1979 – *Wilderness -- Proposed Initial Inventory – Roadless Areas and Islands Which Clearly Do Not have Wilderness Characteristics, Oregon and Washington*

Wilderness Decision Documents

- (X) August 1979 – *Wilderness Review – Initial Inventory, Final Decision on Public Lands Obviously Lacking Wilderness Characteristics and Announcement of Public Lands to be Intensively Inventoried for Wilderness Characteristics, Oregon and Washington* (green document)
- () October 1979 – *Wilderness Review – Intensive Inventory - Oregon, Proposed Decision on the Intensive Wilderness Inventory of Selected Areas* (grey document).
- () March 1980 – *Wilderness Review – Intensive Inventory; Final Decisions on 30 Selected Units in Southeast Oregon and Proposed Decisions on Other Intensively Inventoried Units in Oregon and Washington* (orange document)
- () November 1980 - *Wilderness Inventory – Oregon and Washington, Final Intensive Inventory Decisions* (brown document)
- () November 1981 *Stateline Intensive Wilderness Inventory Final Decision, Oregon, Idaho, Nevada, Utah* (tan document).

B.) Inventory Unit Name(s)/Number(s)

BLM 3-140 of OR-03-10-28 Noon

C.) Map Name(s)/Number(s)

- Final Decision – Initial Wilderness Inventory Map, August 1979, Oregon
- Proposed Decision -- Intensive Wilderness Inventory of Selected Areas Map, October 1979, Oregon
- Intensive Wilderness Inventory Map, March 1980, Oregon
- Intensive Wilderness Inventory --Final Decisions Map, November 1980, Oregon.
- November, 1981 *Stateline Intensive Wilderness Inventory Final Decision, Oregon, Idaho, Nevada, Utah* (tan document).

D.) BLM District(s)/Field Office(s)

Vale District Office

Jordan Field Office

2. BLM Inventory Findings on Record

(Existing inventory information regarding wilderness characteristics (if more than one BLM inventory unit is associated with the area, list each unit and answer each question individually for each inventory unit):

Inventory Source: See above.

Unit# / Name	Size (historic acres)	Natural Condition? Y/N	Outstanding Solitude? Y/N	Outstanding Primitive & Unconfined Recreation? Y/N	Supplemental Values? Y/N
3-140 of OR-03-10-28 Noon	7,740	*	N	N	*
TOTAL	7,740				

*-- These criteria were not specifically addressed in the inventory of this unit.

H-6300-1-WILDERNESS INVENTORY MAINTENANCE IN BLM OREGON/WASHINGTON

APPENDIX B – INVENTORY AREA EVALUATION

Evaluation of Current Conditions:

- 1) Document and review the existing BLM wilderness inventory findings on file, if available, regarding the presence or absence of individual wilderness characteristics, using Form 1, below.
- 2) Consider relevant information regarding current conditions available in the office to identify and describe any changes to the existing information (use interdisciplinary (ID) team knowledge, aerial photographs, field observations, maps, etc.), and document your findings on Form 2, below.

When Citizen Information has been submitted regarding wilderness characteristics, document the submitted materials including: date of Submission; Name of District(s) and Field Office(s) Affected; Type of material Submitted (e.g. narrative, map, and photos). Evaluate any submitted citizen information regarding the validity of proposed boundaries of the unit(s), the existence of roads and other boundary features, the size of the unit(s), and the presence or absence of wilderness characteristics based on relevant information available in the office (prior BLM inventories, ID team knowledge, aerial photographs, field observations, maps, etc.)

Conduct field reviews as necessary to verify information and to ascertain current conditions. Reach conclusions on current conditions including boundaries, size of areas and presence or absence of wilderness characteristics. Fully explain the basis for each conclusion on form 2, including any critical differences between BLM and citizen information.

Document your findings regarding current conditions for each inventoried area. Describe how the present conditions are similar to, or have changed from, the conditions documented in the original wilderness inventory. Document your findings on Form 2 for each inventory area. Cite to or attach data considered, including photographs, maps, GIS layers, field trip notes, project files, *etc.*

FORM 2 -- DOCUMENTATION OF CURRENT WILDERNESS INVENTORY CONDITIONS

Unit Number/ Name: OR-036-067—Noon

Description of Current Conditions: [Include land ownership, location, topography, vegetation features and summary of major human uses/activities.]

1. Is the unit of sufficient size?

Yes X No

Description: Refer to this inventory unit's associated Map 1 for BLM's Unit OR-036-067 location. The boundary of the 7,352 acre unit is nearly the same as the BLM inventory Unit 3-140 of OR-03-10-28 during the 1970's meeting the size criteria. The only difference being the exclusion of utility corridor right-of-way width for U.S. Highway 95, an un-numbered County Road, and one mineral material site right-of ways associated with the county road. Acreage for unit OR-036-067 in Form 2 is calculated from BLM GIS information. The remaining 388 acre difference from Form 1 is the acreage contained within the utility corridor and mineral material site rights-of-way. The unit is bounded on its southwest side by an un-numbered BLM Road and BLM Road 6367-00, on its north side by the utility corridor right-of-way for U.S. Highway 95, on its northeast side by BLM Road 036-RT17 and one private land parcel, and on its east side by one mineral material site right-of-way and the utility corridor right-of-way of the un-numbered County Road. The natural-surfaced boundary roads receive mechanical maintenance as needed to keep them passable on a regular and continuous (seasonal) basis.

2. Is the unit in a natural condition?

Yes X No N/A

Description: Given its size relative to the minimal evidence of man-made developments, BLM Unit OR-036-067 appears to be affected primarily by the forces of nature with the imprint of humans substantially unnoticeable to the average visitor. The unit is dominated by two low profiled benches and extended nearly flat terrain on both. Elevations range from 4,100 feet to 4,710 feet, with the upper bench elevations located mostly in the unit's west and south central area while the unit's lower elevation bench is located in the unit's north and northeast sector. The unit consists mainly of the two bench areas that are sparsely dissected by small drainages that flow toward the north and northeast into Rock Creek Reservoir or to the north into Jordan Creek.

All drainage from the area flows through and under U.S. Highway 95 that forms the northern boundary on the unit. Sparsely populated vegetation throughout the unit consists predominately of big and low sagebrush with both native and non-native grass species.

Refer to this inventory unit's associated Map 1 and Map 2 for its human developments. They include 3.5 miles of 3 motorized primitive trails (MPT) 2 earthen reservoirs, one reservoir enclosure, 6.85 miles of fence line, and 3 vegetation manipulation treatments conducted from 1962 through 1986. The vegetation treatments were conducted only in about 3.5 percent of the acreage within the unit over a twenty-four year period. Presently, to the average visitor, the vegetation treatments conducted in the unit appear as a whole, individually and collectively, mostly indistinguishable across the landscape.

3. Does the unit have outstanding opportunities for solitude?

Yes _____ No X N/A _____

Description: BLM concludes that BLM Unit OR-036-067 does not provide outstanding opportunities for solitude. The character of the inventory unit has not changed since the 1970's. The unit is mostly an irregular rectangle in shape. The width of the unit averages about two to two and a half miles wide while the unit is up to 4.5 miles in length. Length varies widely throughout the unit. The unit consists of two benches that are essentially flat while relief in elevation fluctuates by only a few 10s of feet if one would traverse each bench in the unit. The unit's diversity in vegetation that is comprised of both low and big sage brush and both native and non-native grasses across the landscape does not provide any extensive vegetative screening opportunities for solitude or a sense of isolation anywhere within the unit. The sights and sounds emanating from traffic along adjacent U.S. Highway 95 along the unit's northern boundary also detracts from opportunities for solitude along much of the northern portion of the unit. As a result of the area's size relative to its shape, the presence of U.S. highway 95 forming the unit's northern boundary, the absence of vegetative screening, and the lack of diversity in relief, there is no outstanding opportunities for solitude.

4. Does the unit have outstanding opportunities for primitive and unconfined recreation?

Yes _____ No X N/A _____

Description: BLM concludes that BLM Unit OR-036-067 does not provide outstanding opportunities for primitive and unconfined recreation. The most dominate dispersed recreation activities within the unit would be hiking throughout the two benches or hunting of game species (primarily deer, chukar and antelope).

Other than nearly flat benches covering almost the entire unit there are no unique or special features associated with the unit that would attract a visitor who is seeking a primitive and unconfined recreational experience. Recreational pursuits within the area, individually or collectively, are not outstanding in character or nature.

5. Does the unit have supplemental values?

Yes No N/A

Description: BLM has documented two sage grouse leks within the unit. The bird is a BLM special status animal species.

Summary of Findings and Conclusion

Unit Name and Number: OR-036-067--Noon

Summary Results of Analysis:

- 1. Does the area meet any of the size requirements? Yes No
- 2. Does the area appear to be natural? Yes No
- 3. Does the area offer outstanding opportunities for solitude or a primitive and unconfined type of recreation? Yes No NA
- 4. Does the area have supplemental values? Yes No NA

Conclusion -- check one:

The area, or a portion of the area, has wilderness character.

The area does not have wilderness character.

Prepared by: Jack R Wenderoth 11-16-11
Jack Wenderoth, Planning Contractor

Team Members:

<u>Keri Fredrick</u>	<u>11-16-11</u>
Keri Fredrick, Outdoor Recreation Planner	Date
<u>Aimee Huff</u>	<u>11/16/2011</u>
Aimee Huff, Rangeland Management Specialist	Date
<u>Eian Ray</u>	<u>11-16-11</u>
Eian Ray, GIS Specialist, Contractor	Date
<u>Garth Ross</u>	<u>11/14/2011</u>
Garth Ross, Wildlife Biologist	Date
<u>Brent Grasty</u>	<u>11/16/11</u>
Brent Grasty, GIS Coordinator	Date

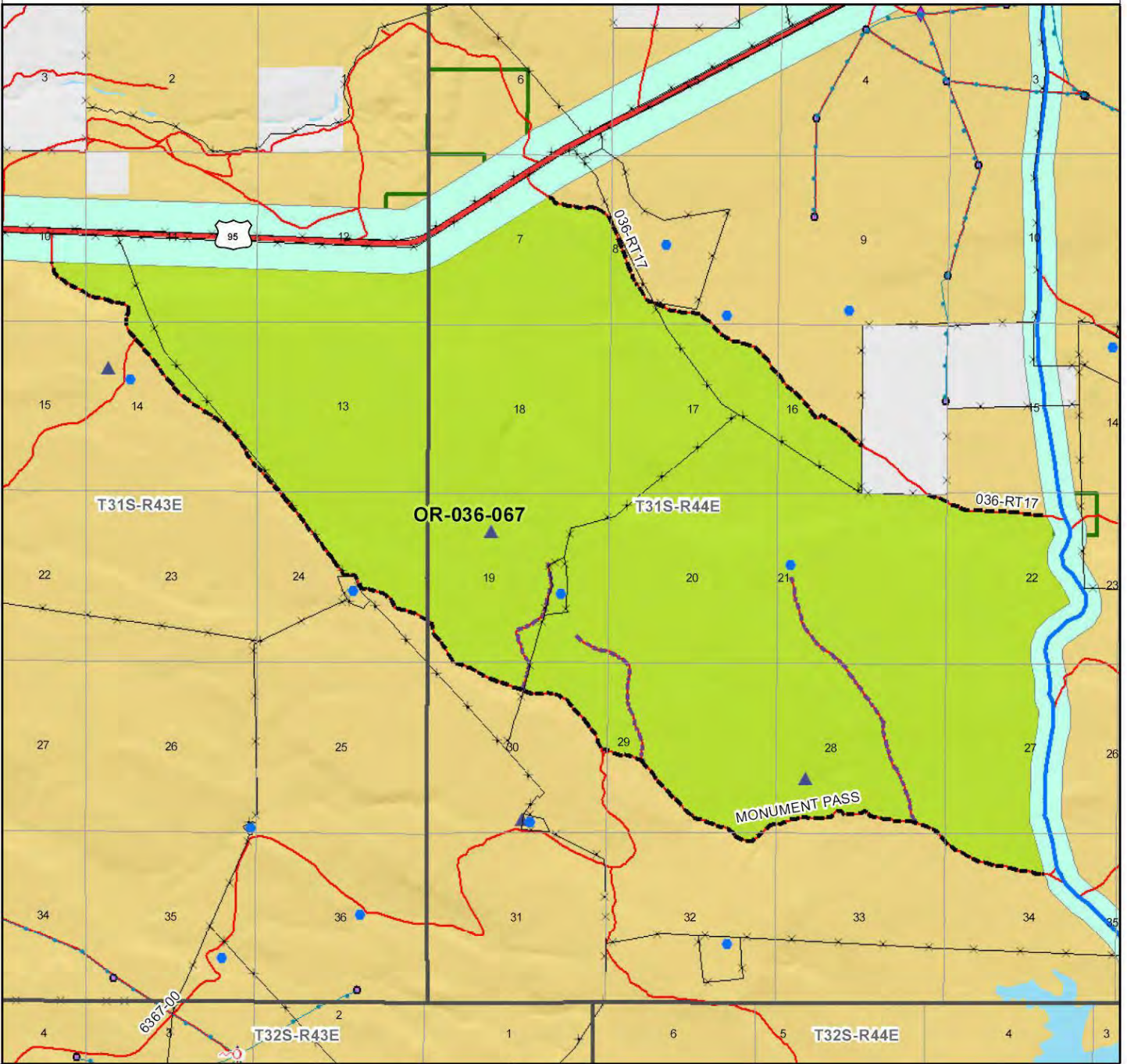
Approved by:

Carolyn R. Chad 11/28/2011
Carolyn Freeborn, Jordan Resource Area Field Manager Date

This form documents information that constitutes an inventory finding on wilderness characteristics. It does not represent a formal land use allocation or a final agency decision subject to administrative remedies under either 43 CFR parts 4 or 1610.5-2.

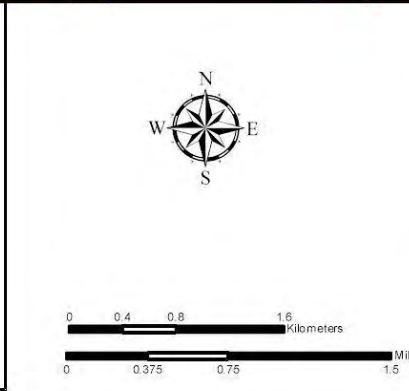
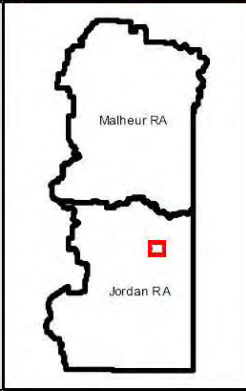
Wilderness Characteristics - Overview

Noon - OR-036-067 - Map 1 of 2



Legend

<ul style="list-style-type: none"> Developed Spring Wildlife Guzzler Earthen Reservoir Pipeline Trough Fence Storage Tank Surface Mining Disturbance Sage Grouse Lek Special Status Plant BLM Wild Char Inventory Unit Wilderness Study Area Mineral Material Site Road/Utility Right-of-Way Major Water Body 	<p>Route Types - BLM Determination</p> <ul style="list-style-type: none"> Boundary Road Motorized Primitive Trail (MPT) Discontinued Use <p>Routes - Outside Wild Char Unit</p> <ul style="list-style-type: none"> Major Highway BLM Numbered & Other Routes <p>Land Ownership</p> <ul style="list-style-type: none"> Bureau of Land Management State Private Other Federal Land
---	---



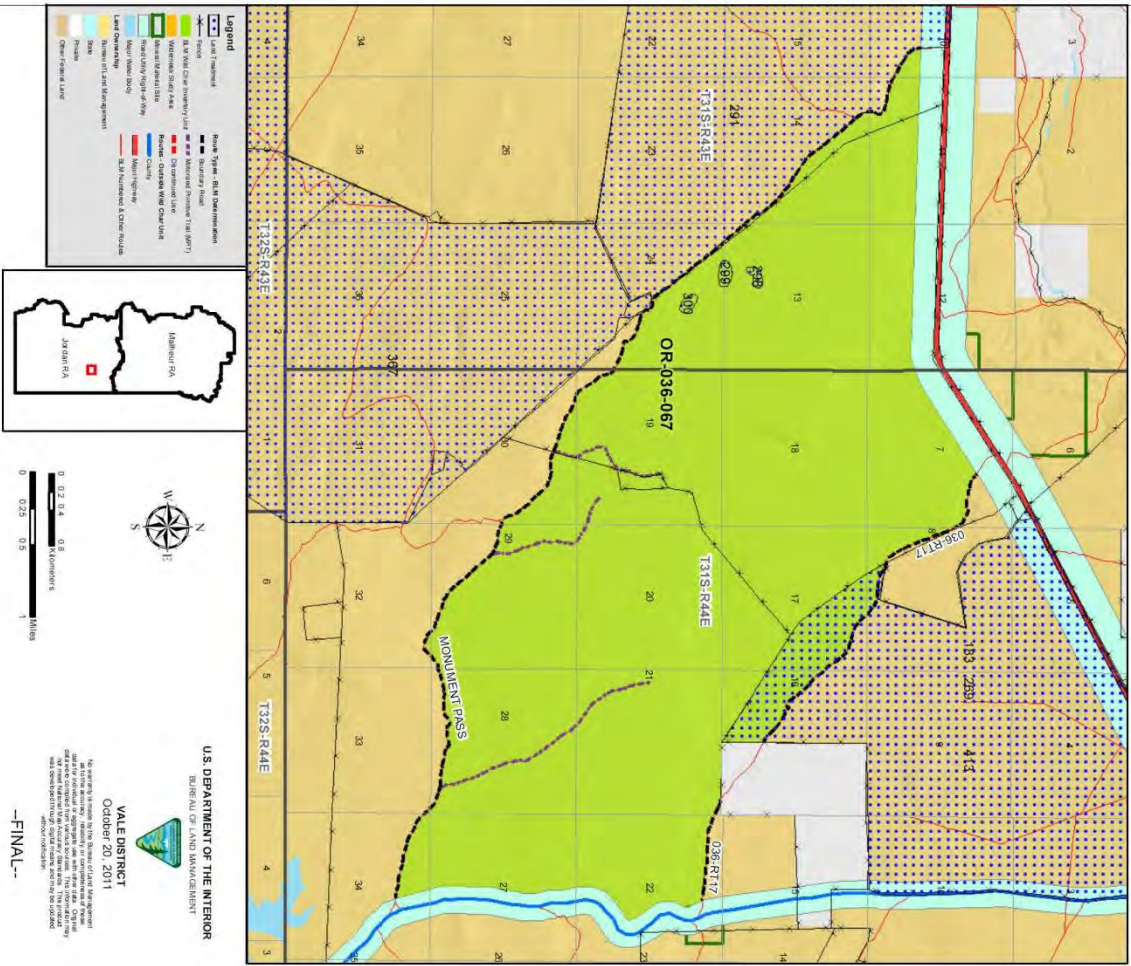
U.S. DEPARTMENT OF THE INTERIOR
BUREAU OF LAND MANAGEMENT

VALE DISTRICT
October 20, 2011

No warranty is made by the Bureau of Land Management as to the accuracy, reliability, or completeness of these data for individual or aggregate use with other data. Original data were compiled from various sources. This information may not meet National Map Accuracy Standards. The product was developed through digital means and may be updated without notification.

--FINAL--

Wilderness Characteristics - Land Treatments
Noon - OR-036-067 - Map 2 of 2



Wilderness Characteristics - Land Treatments
Noon - OR-036-067 - Map 2 of 2

OBJECTID *	NAME	TREATMENT TYPE	SEED GROUP	DATE
183	ROCK CR SDG	Plow/Disc	Not Applicable	1962
289	ROCK CR B.C.	Chemical Treatment	Not Applicable	1967
291	MONUMENT SDG	Drill Seeding	Non-native Grasses	1962
298	TAMKEY SDG & SUPPLMTL ESR	Drill Seeding	Non-native Grasses	1986
299	TAMKEY SDG & SUPPLMTL ESR	Drill Seeding	Non-native Grasses	1986
300	TAMKEY SDG & SUPPLMTL ESR	Drill Seeding	Non-native Grasses	1986
367	MONUMENT B.C.	Chemical Treatment	Not Applicable	1962
413	ROCK CR SDG	Drill Seeding	Unknown	1962

Note: The Land Treatments represented by navy blue dots on the map to the left are labeled with the treatments ObjectIDs listed in the first field of the Land Treatments table shown above. Multiple types of treatments may have been applied to the same area. For example, one treatment area may have been plowed and drill seeded - a record is shown in the table for each type of treatment.

U.S. DEPARTMENT OF THE INTERIOR
 BUREAU OF LAND MANAGEMENT
 VALE DISTRICT
 October 20, 2011
 -FINAL-