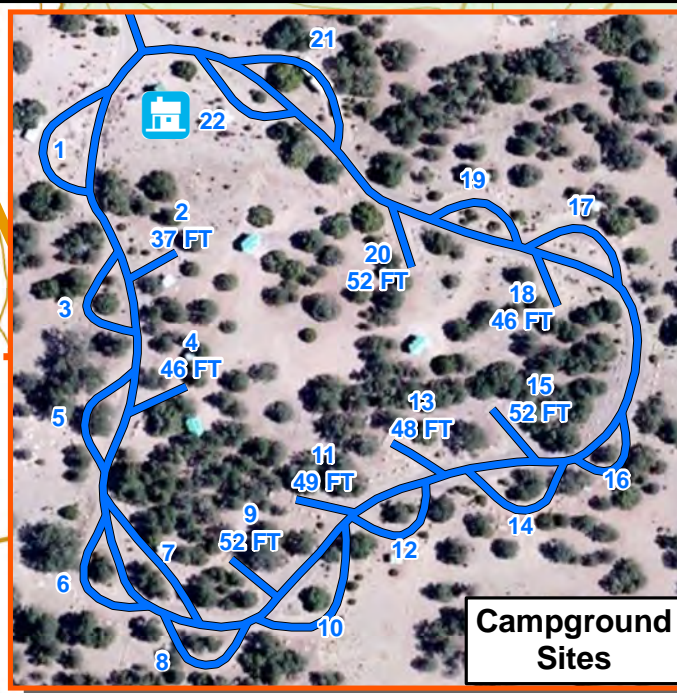
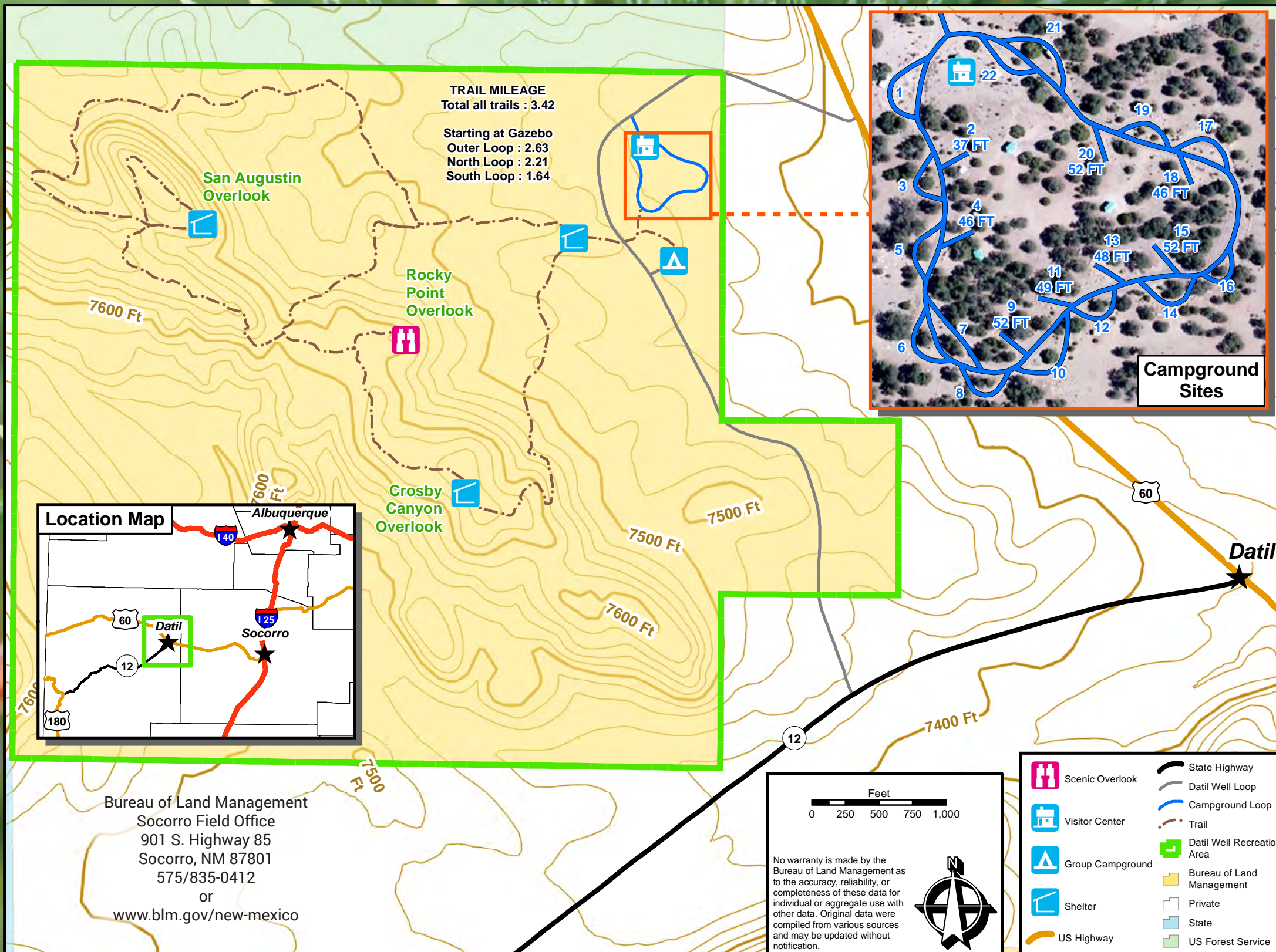




Datil Well Campground



Bureau of Land Management
Socorro Field Office
901 S. Highway 85
Socorro, NM 87801
575/835-0412
or
www.blm.gov/new-mexico

Welcome to Datil Well Campground!

The Datil Well Campground is located one mile west of Datil, New Mexico and is accessible from both Highway 60 and Highway 12. Built in June of 1968, and managed by the Bureau of Land Management, the campground provides a peaceful place for weary travelers or a destination to come, stay, play and enjoy the smell of the pines.

The water that feeds the campground is from one of the original wells drilled by the Civilian Conservation Corps (CCC) for the Magdalena Stock Driveway.

Datil Well is a scenic area located at 7,400 feet elevation that borders the Cibola National Forest. The campground offers 22 single-family campsites as well as a group site for large gatherings. The Group Site has two covered pavilions, group-size fire ring, group-size cooking grill, prep table and a vault toilet. This site takes reservations.



Campground facilities include graveled sites for back-in's and pull throughs

and have picnic tables, upright cooking grills, fire rings and a short walking distance to vault toilets. Hydrants provide drinking water and a small visitor's center offers WiFi when not out hiking, birding, observing wildlife, or star-gazing. All sites are on a first come basis and the entire campground is a fee site.



The Datil Well Campground area has 3 miles of scenic hiking trails.

Very Large Array

The Very Large Array (VLA), located 15 miles east of Datil, is a radio astronomy observatory located on the Plains of San Agustin between Datil and Magdalena. It comprises of 27 radio telescopes in a Y-shaped pattern, and each is 82 feet high and weighs 230 tons. The VLA has been used by more astronomers and has been mentioned in more scientific papers than any other radio telescope in the world.

Weather Conditions

Temperatures, like most mountainous areas, vary greatly. During the summer, daytime highs in the 80s are normal, dropping to 50s in the evening. Summer rains (monsoons) occur in the area; however, use caution since lightning often accompanies the rain. The campground is open year round, with diminished amenities during the colder months. Snow

There are three miles of hiking trails winding through piñon-juniper and ponderosa pine woodlands, with scenic views of the San Augustin Plains and Crosby Canyon. Interpretive signs along the trail assist in tree-identification. The trail and vistas also offer an occasional glimpse of wildlife in a quiet and solitude setting.



Radio telescopes use radio waves instead of light waves to make images of the sky.

accumulations of up to a foot of snow may be possible with temperatures in the 40s during the day to a low of zero at night.



A bit of snow covers the ground at Crosby Canyon Overlook

Safety Rules

- The use of weapons is prohibited within and adjacent to the campground.
- Observe speed limits within the campground and keep all-wheeled vehicles on established roadways.

- Trails are for hiking. Motorized vehicles, horses, and mountain bikes are prohibited.

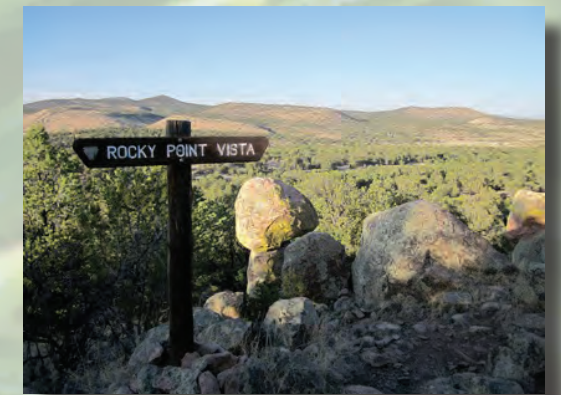
- Keep pets on a leash.

Other Important Information

- Any dead and down firewood found within the campgrounds can be collected and used.
- Use grills, fire rings, and trash cans provided at each camp site.
- Respect the quiet setting of the campground. Quiet hours are from 10:00 p.m. to 6:00 a.m.

- Camping limit is seven days.

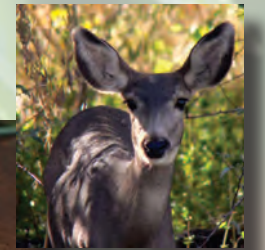
Be courteous to other campers and enjoy your stay at Datil Well Campground!



Pets must be keep on a leash.



Datil Well Campground



Mule Deer



Collard lizards



Chipmonk

Courtesy of Washington University